



Jeep Grand Cherokee 2005 – 2010
Hidden Winch Mount
Installation Instructions

Tools Required

- 1) Sawzall
- 2) Power Drill w/ Step Drill Bit
- 3) Socket Wrench
- 4) 14mm Socket
- 5) 11mm Socket
- 6) 13mm socket

Parts List

- 1) Winch Mount
- 2) Left and Right Frame Rail Sandwich Plates
- 3) Two Hood Latch Support extensions
- 4) 10 nuts and bolts (two nuts are welded to the frame rail sandwich plates.
- 5) Two long zip ties (for holding grill in place

A few notes:

Installing the winch mount is easy, as it just requires cutting of the cross member and bolting the mount up to the Jeep.

When the time comes to cut your bumper, remember to take your time. Go through the images we have provided in the install manual and follow the guides as close as possible.

REMEMBER, CUT LESS FIRST. Cut the required area of the bumper, re-install the bumper on the Jeep and check alignment. If need more, mark the required areas and cut again. Repeat this process several times to get the best fitment.

Also, call or text me anytime with any questions so we can help and guide you if necessary. I'M ALWAYS ON STAND BY, -BASH. (626) 710-6455.

Step 1: Remove plastic front bumper fascia. If you do not know how to remove fascia, please refer to Step 1-A.

Step 1-A: Sell your Jeep, purchase a Prius....

.....just kidding. Please view separate attachment for bumper fascia removal instructions.

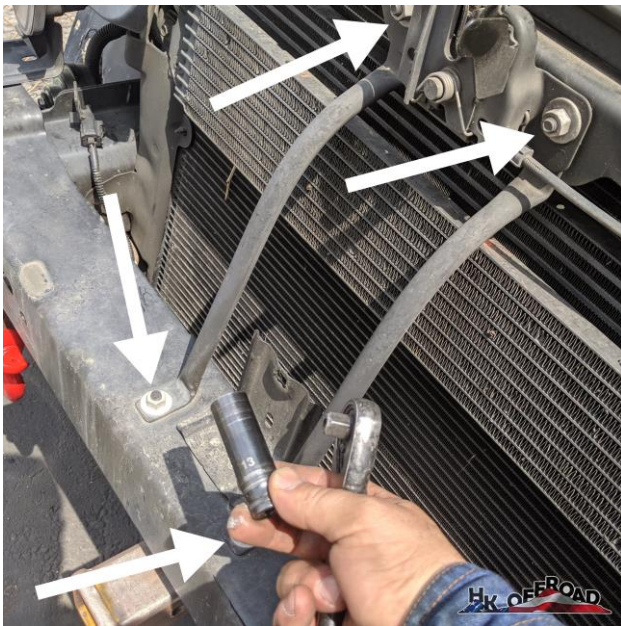




Step 4: Remove clips attaching Air Temperature Sensor to steel bumper



Step 5: Using 13mm socket, remove both Hood Latch Support Brackets and set aside, you will re-use these brackets



Step 6: Using Sawzall, cut alongside of frame rail cutting off this center box. Be careful not to cut or damage radiator hoses





Step 7: Cleanup the cut edges of remaining sheet metal, as shown. Apply paint to bare metal surfaces.



Step 8: a) Insert frame rail sandwich plates into frame rail. B) Mount up winch plate with only four bolts from bottom of plate, two bolts on each frame rail and bolt tight so plate sits flats up against the jeeps unibody. C) Mark the two holes on the side frame bracket which we call “bunny ears”. Mark the furthest hole to be drilled under the jeep past the radiator core support. See photos below.

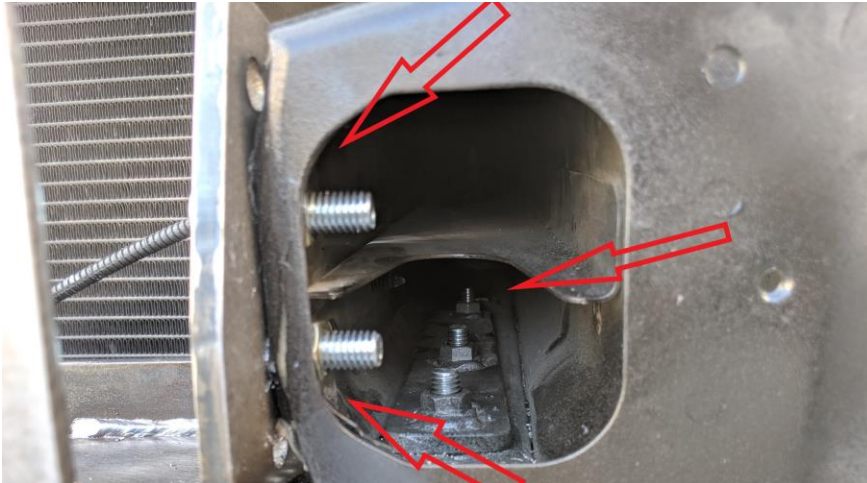
Note: two holes on the sandwich plates are tapped. After installing bolt, install a nut over the bolt, tighten

There are six holes drilled on each side of the plate. Follow this photo as a guide to properly mount your winch plate to your model year vehicle.





DRILLING LOCATIONS: TWO HOLES ON THE SIDE OF THE FRAME RAIL AND ONE HOLE IN THE BACK OF THE FRAME RAIL. REMOVE FRAME RAIL SANDWICH PLATE PRIOR TO DRILLING SO YOU DON'T DRILL OUT THE THREADS. THIS PHOTO SHOWS ALL BOLTS MOUNTED AND SHOULD BE USED AS REFERENCE ONLY. YOUR PLATES MOUNTING POSITION IS BASED ON ITS MODEL YEAR AND MAY NOT REFLECT THE SAME OSITION AS THIS PHOTO.



Step 9: Using a table vise, bend the stock hood latch brackets as shown in photo. If you do not have a table vise you may improvise by using the DRAIN holes on the winch plate.





If you don't have a table vise, use the drain holes on the winch plate to bend hood latch brackets.



Step 10: Tighten all 10-bolts on the winch plate. The hardware provided is serrated edge flanged nuts and bolts. Once tightened they're designed to bite into the steel and resist coming loose.

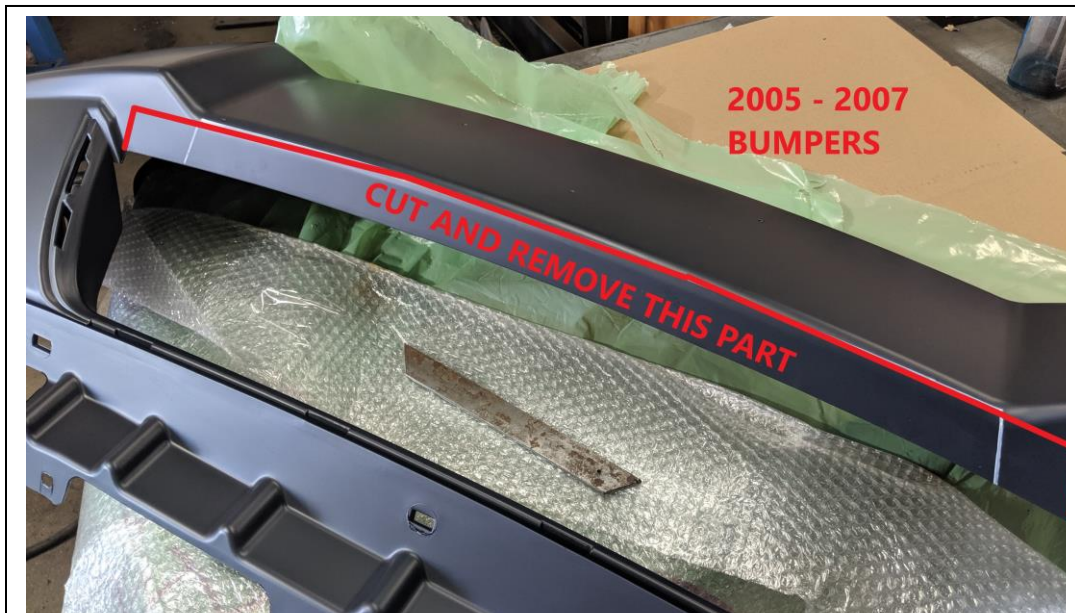
Step 11: Install hood latch bracket extensions using provided 1/4" nuts and bolts.





Cutting Bumper Fascia

In The center, cut out the bottom portion of the bumper fascia to make room for the plate. See following photos for examples.





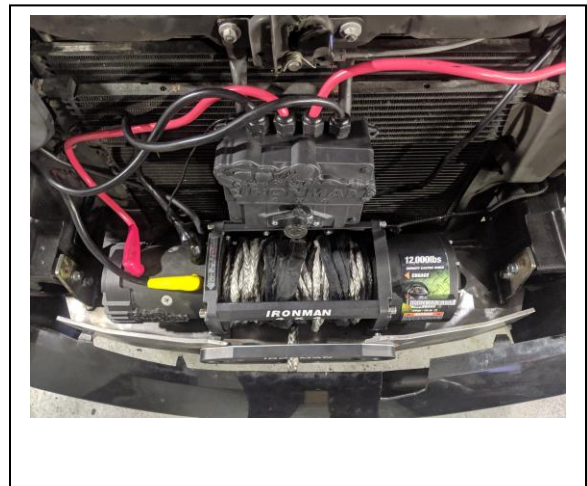
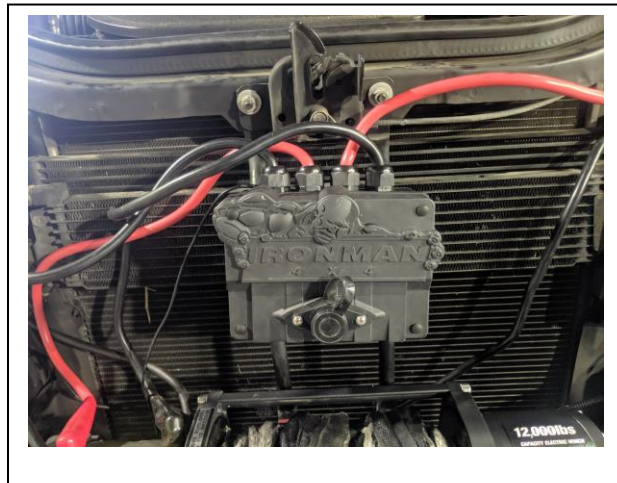
After mounting up the winch plate, bring your bumper fascia back to its mounting position on the vehicle and align it. Reach behind the bumper and mark the two holes for the winch fairlead using a bright colored marker. If you have the winch plate with shackle tabs go ahead and outline the shackle tabs behind the bumper as well, you will cut this part out. You may need a friend to hold the bumper in its approximate location since the shackle tabs will push on the plastic. See photos for examples.





Installing your Winch

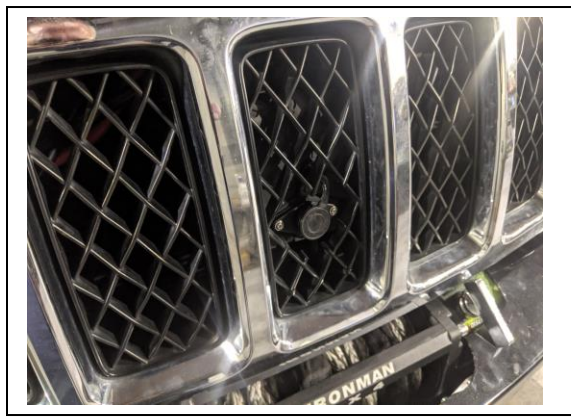
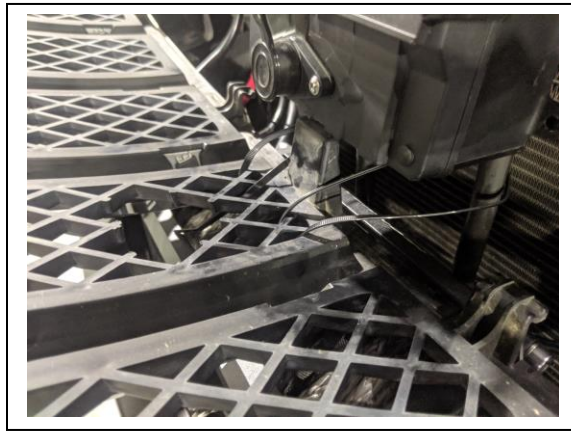
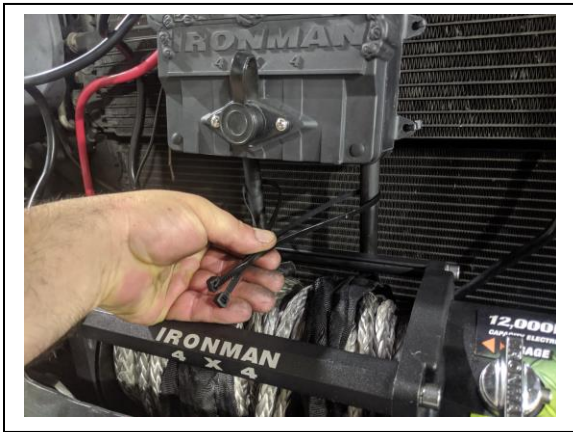
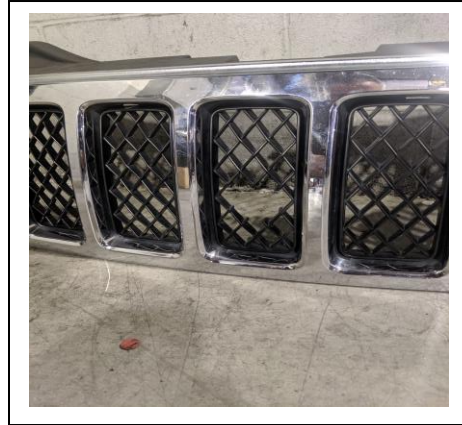
In any “hidden” winch or “recessed” winch mounting application, you will rotate the cable release lever (clutch handle) for access and mount the solenoid box in a different location in order to maintain a stock front end look. Some people rotate the clutch backwards to access behind the winch from an opening in the grill, others cut out a section on top of the bumper for access. The following photos are examples from Grand Cherokee owners to give ideas. We mounted our solenoid onto the hood latch brackets and cut a hole in the center of the grill to plug in our winch controller.



Once mounting and wiring winch is complete, re-install the front bumper. When reinstalling the front grill, you will use two long zip ties to keep the grill in place near the bottom of the grill. The zip ties will wrap around the hood latch brackets and out through the front grill. See photos for example.



Jeep Grand Cherokee 2005 – 2010 WK Hidden Winch Mount Installation Instructions



Contact for questions: text or call Bash 626-710-6455 or email info@hkoffroad.com



Thank you for choosing HK Offroad for your recovery accessory needs.

No be so kind and send some photos after the install 😊

