

Beech



NT



BW

Maple (butterfly stool)



Maple Color

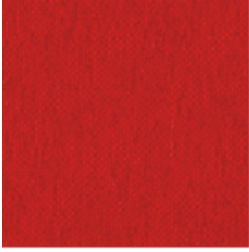


Rosewood Color

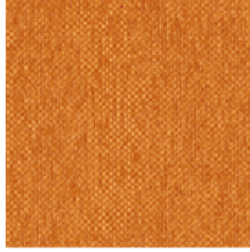
Rank A

ANELKA

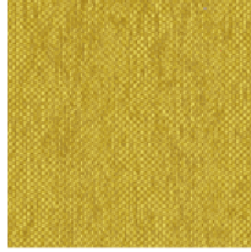
100% polyester



A0415 (レッド) ○



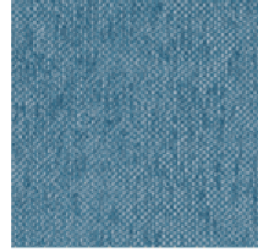
A0425 (オレンジ) ○



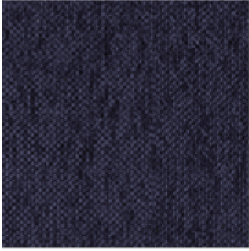
A0436 (ミモザ) ○



A0445 (グリーン) ○



A0453 (ライトブルー) ○



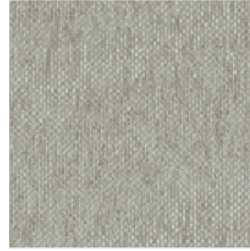
A0457 (ダークブルー) ○



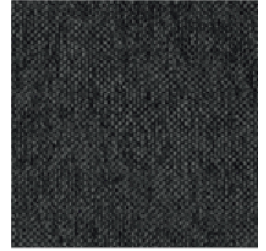
A0475 (ベージュ) ○



A0487 (ダークブラウン) ○



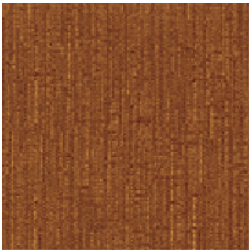
A0495 (グレー) ○



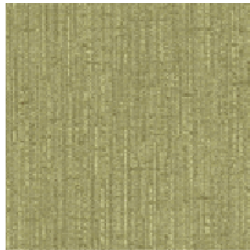
A0498 (チャコールグレー) ○

AMELI

77% polyester / 23% acrylic



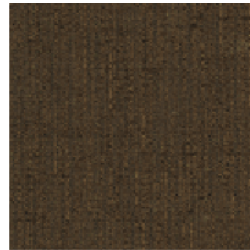
A0225 (オレンジ) ○



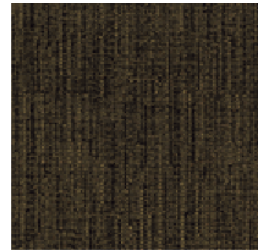
A0244 (ライム) ●



A0275 (ベージュ) ●



A0285 (ブラウン) ●

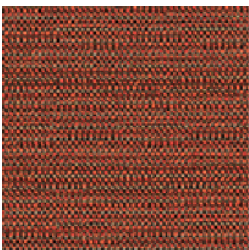


A0289 (ティープブラウン) ○

LUCE

100% polyester

- ・ Excellent antibacterial and deodorizing properties due to the pure silver thread "Mufan R"
- ・ Anti-static properties using the silver thread to dissipate static electricity, making it difficult to attract dust



A0315 (レッド) ●



A0345 (グリーン) ●



A0354 (ブルーグレー) ●



A0375 (ベージュ) ●



A0385 (ブラウン) ●

Rank B

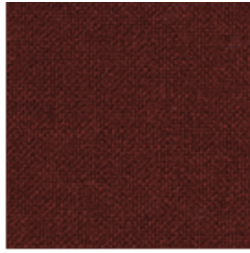
N.C.

70% acrylic / 30% wool

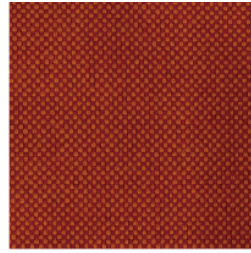
- Soft texture of wool blend
- Standard plain weave with deep colors due to yarn dyeing



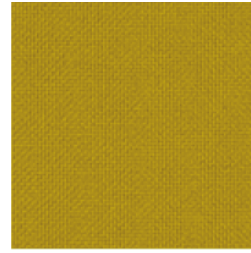
B0115 (レッド) ○



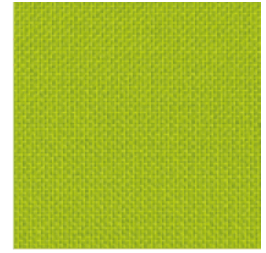
B0117 (ワインレッド) ●



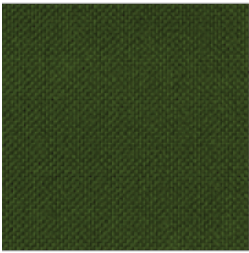
B0128 (ティーフオレンジ) ○



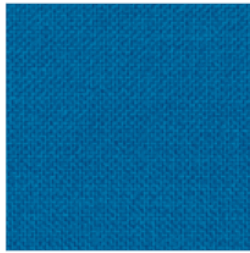
B0137 (マスタード) ○



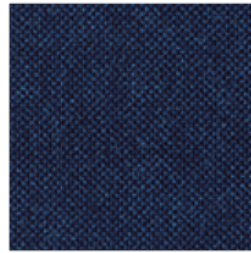
B0144 (ライム) ○



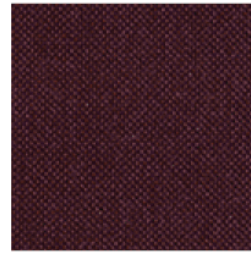
B0146 (オリーブグリーン) ●



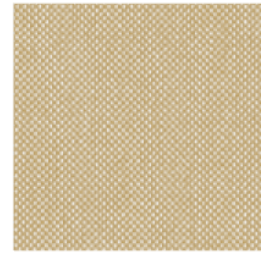
B0152 (シアン) ○



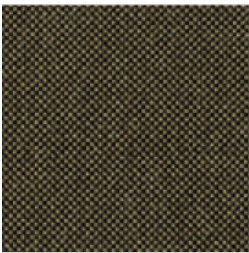
B0158 (インディゴ) ●



B0165 (パープル) ○



B0175 (ベージュ) ●



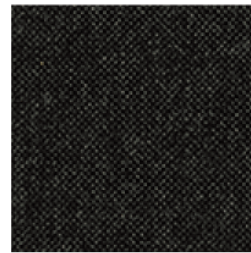
B0188 (チャコールブラウン) ●



B0193 (ライトグレー) ●



B0195 (グレー) ●



B0198 (チャコールグレー) ●



B0199 (ブラック) ●

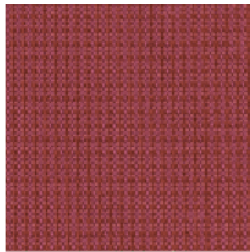
NEW CHAMOIS

65% acrylic / 18% polyester

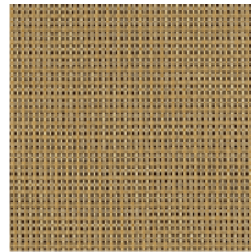
- Uses special mall yarn with a voluminous feel
- Plain weave with excellent abrasion resistance



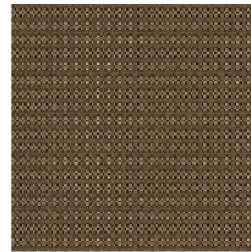
B0203 (アイボリー) ●



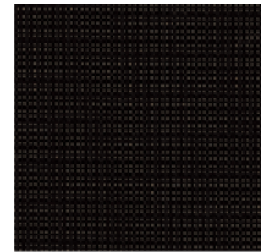
B0217 (ワインレッド) ○



B0283 (ライトブラウン) ○



B0284 (ココアブラウン) ●

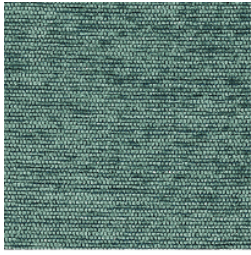


B0299 (ブラック) ●

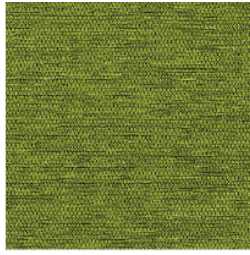
Mica G

100% polyester

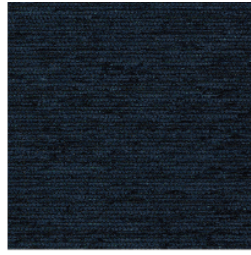
- High-performance **pet-friendly** upholstery that also has stain- and water-repellent functions
- Excellent anti-bacterial and deodorizing functions with sterling silver thread "Mufan®"



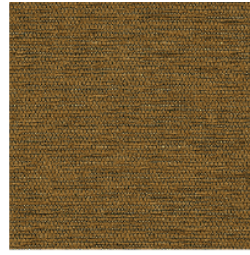
B0642 (ターコイズ) ○



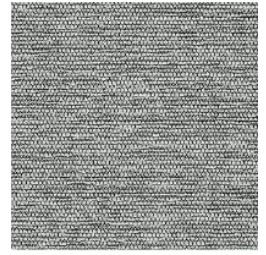
B0644 (ライム) ○



B0659 (ダークネイビー) ○



B0685 (ブラウン) ○

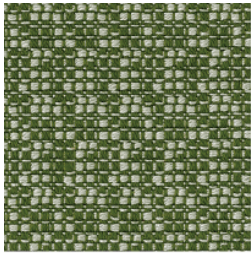


B0693 (ライトグレー) ○

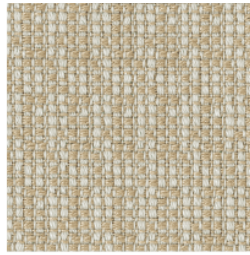
MINAMO

100% acrylic

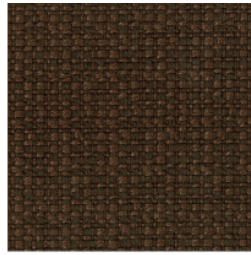
- ・ Plain weave loosely woven in a checkered pattern
- ・ Rich volume and just the right amount of luster



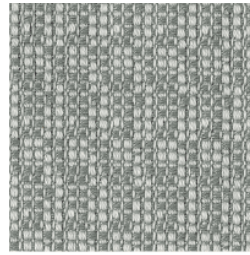
B0745 (グリーン) ○



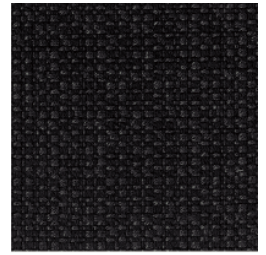
B0775 (ベージュ) ○



B0785 (ブラウン) ○



B0793 (ライトグレー) ○



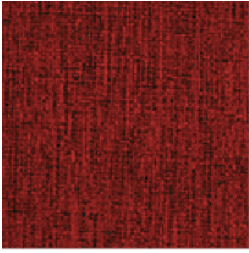
B0799 (ブラック) ○

Rank C

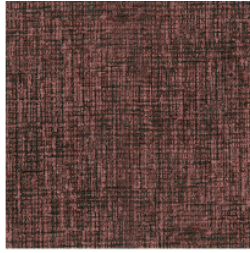
CASSEL

70% acrylic / 30% wool Made in SPAIN

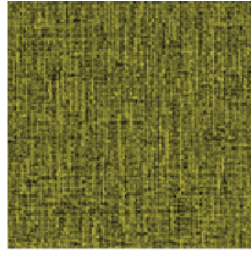
- Soft texture of wool blend
- Standard plain weave with deep colors due to yarn dyeing



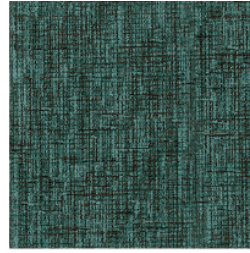
C0515 (レッド) ○



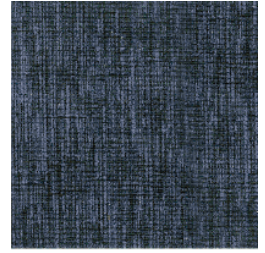
C0516 (ローズ) ○



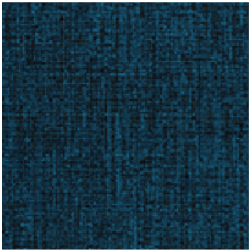
C0535 (イエロー) ○



C0542 (ターコイズ) ○



C0556 (ネイビー) ○



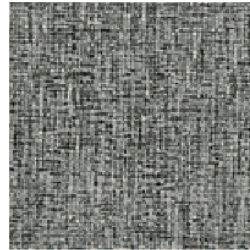
C0557 (ダークブルー) ●



C0575 (ベージュ) ○



C0583 (ライトブラウン) ○



C0593 (ライトグレー) ●

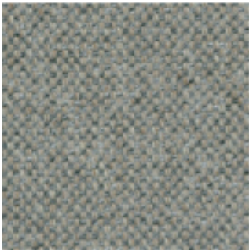


C0595 (グレー) ○

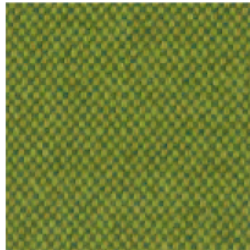
T-SELAM

100% polyester

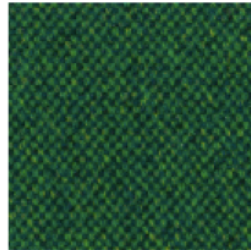
- Soft, high-quality feel like wool and water-repellent properties
- Use of dyed yarn realizes significant water savings, energy savings, and CO2 reduction, making it environmentally friendly *Wrinkles may appear depending on the product.



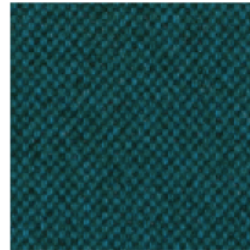
C0876 (グレーベージュ) ○



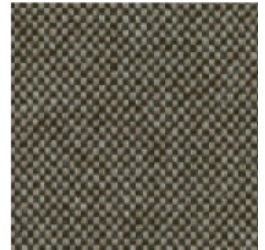
C0844 (ライム) ○



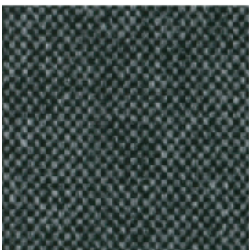
C0847 (ダークグリーン) ○



C0857 (ダークブルー) ○



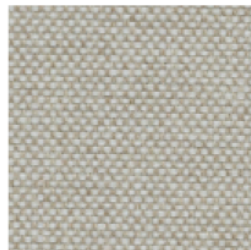
C0885 (ブラウン) ○



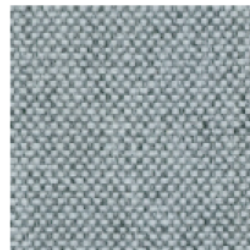
C0897 (ダークグレー) ○



C0899 (ブラック) ○



C0803 (アイボリー) ○



C0893 (ライトグレー) ○

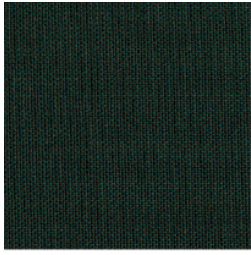


C0895 (グレー) ○

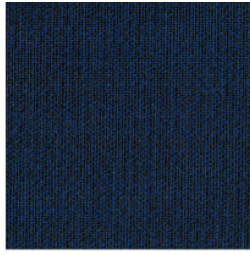
ATLAS

90% wool / 10% nylon made in UK

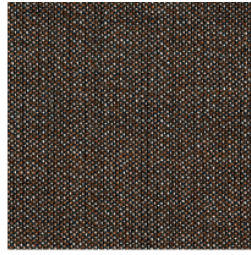
- Densely woven plain weave
- Design fabric that interweaves multiple threads with excellent color scheme *Wrinkles may appear depending on the product



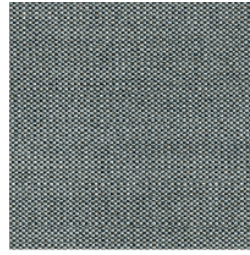
C0747 (ダークグリーン) ●



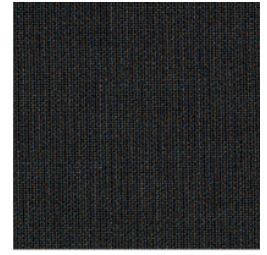
C0757 (ダークブルー) ●



C0785 (ブラウン) ●



C0793 (ライトグレー) ●



C0797 (ダークグレー) ●

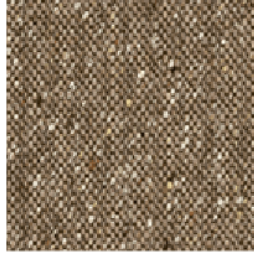
SAXONY

57.5% cotton / 25% wool / 17.5% acrylic

- ・ Uses a plain weave and homespun-like mixed yarn for volume and warmth.



C0283 (ライトブラウン) ●



C0287 (ダークブラウン) ●

ASKA

43.2% nylon / 41.5% polyester / 15.3% rayon

- ・ Jacquard weave with cloisonné pattern, an ancient Japanese traditional pattern
- ・ Tendo Mokko original *Wrinkles may appear depending on the product



C0375 (ベージュ) ●

Rank D

T-KOMON

58% cotton / 42% rayon

- High-density jacquard weave studded with high-quality shine
- Tendo Mokko original *Wrinkles may appear depending on the product



D0275 (ベージュ) ●

NAMI

52% acrylic / 48% polyester

- Jacquard weave with a modern arrangement of traditional scale patterns
- Water Resistant
- Tendo Mokko original *Wrinkles may appear depending on the product



D0375 (ベージュ) ●

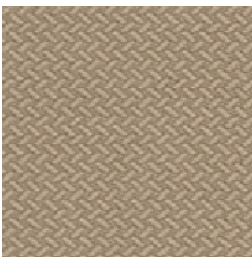


D0385 (ブラウン) ●

KENNING

100% wool

- Soft feel and volume of 100% wool
- Plain weave with natural colors



D0175 (ベージュ) ○



D0193 (ライトグレー) ○

SPLIT

100% polyester made in SPAIN

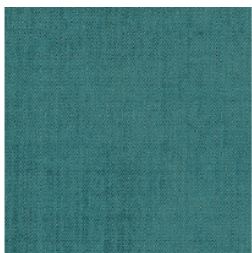
- "Aqua Clean®" that can remove dirt with just water
- Elegant colors with a moist and glossy feel



D0403 (アイボリー) ○



D0417 (ワインレッド) ○



D0442 (ターコイズ) ○



D0457 (ダークブルー) ○



D0495 (グレー) ○

COLLINE 2

75% wool / 17% acrylic / 8% nylon Made in UK

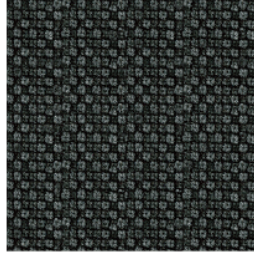
- A design fabric with a distinctive uneven weave
- The soft, high-quality texture and volume of wool



D0603 (アイボリー) ●



D0659 (ダークネイビー) ●



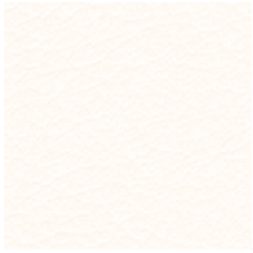
D0695 (グレー) ●

Rank V

ALL MIGHTY

Vinyl leather

- Does not harden even when disinfected with hypochlorous acid or alcohol
- Highly functional vinyl leather with anti-fouling and anti-migration features that prevent stains from sticking



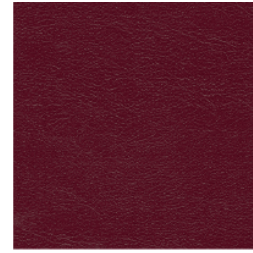
V0101 (ホワイト) ●



V0103 (アイボリー) ●



V0115 (レッド) ○



V0117 (ワインレッド) ○



V0135 (イエロー) ○



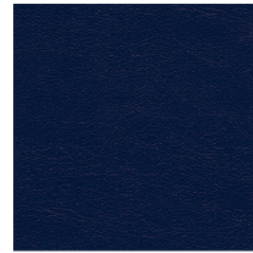
V0145 (グリーン) ○



V0146 (オリーブグリーン) ○



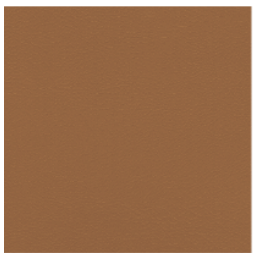
V0155 (ブルー) ○



V0157 (ダークブルー) ○



V0174 (ブロンズ) ●



V0182 (キャメル) ○



V0185 (ブラウン) ●

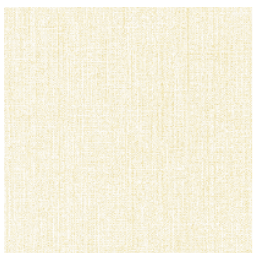


V0199 (ブラック) ●

MANIERA

Vinyl leather

- Fabric-like texture that gives you a warm feeling
- Deep colors with a subtle shine *Wrinkles may appear depending on the product
- Does not harden even when disinfected with hypochlorous acid or alcohol
- Highly functional vinyl leather with anti-fouling and anti-migration features that prevent stains from sticking



V0403 (アイボリー) ○



V0427 (テラコッタ) ○



V0445 (グリーン) ○



V0457 (ダークブルー) ○



V0487 (ダークブラウン) ○

Rank S

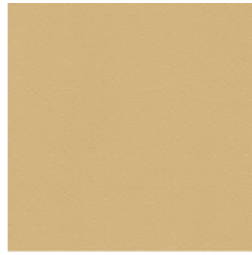
EDEL SMOOTH

Synthetic leather

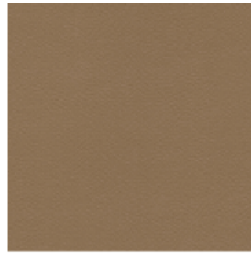
- ・ Synthetic leather with calf leather motif
- ・ Rich texture and volume



S0103 (アイボリー) ○



S0175 (ベージュ) ○



S0183 (ライトブラウン) ○



S0187 (ダークブラウン) ●



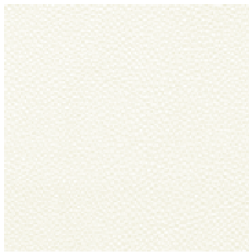
S0199 (ブラック) ●

Rank L

RIO

Genuine leather

- ・ Genuine leather with a solid feel
- ・ Flexible and high-quality feel



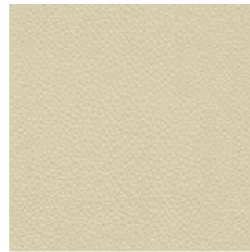
L0103 (アイボリー) ○



L0147 (ダークグリーン) ○



L0156 (ネイビー) ○



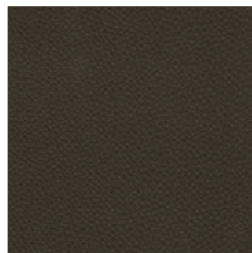
L0175 (ベージュ) ○



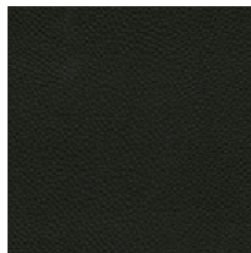
L0182 (キャメル) ○



L0185 (ブラウン) ○



L0187 (ダークブラウン) ●



L0199 (ブラック) ●

Cushion for Butterfly Stool

WILLOW

70% acrylic / 30% wool

- ・ Rough texture supervised by Sori Yanagi
- ・ Tendo Mokko original



T0115 (レッド) ●



T0145 (グリーン) ●