

Shirakawa - Wood



Hard Maple NP · NOIL
NP - Matte PU Coating
NOIL - Oil Coating



Black Walnut TP · BWOIL
TP - Matte PU Coating
BWOIL - Oil Coating



Maple MCB
Matte PU Coating



Black Cherry NP · NOIL
NP - Matte PU Coating
NOIL - Oil Coating



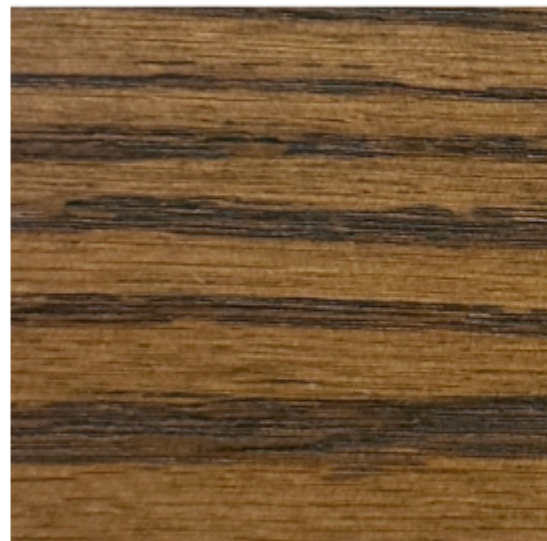
Oak FO
Matte PU Coating



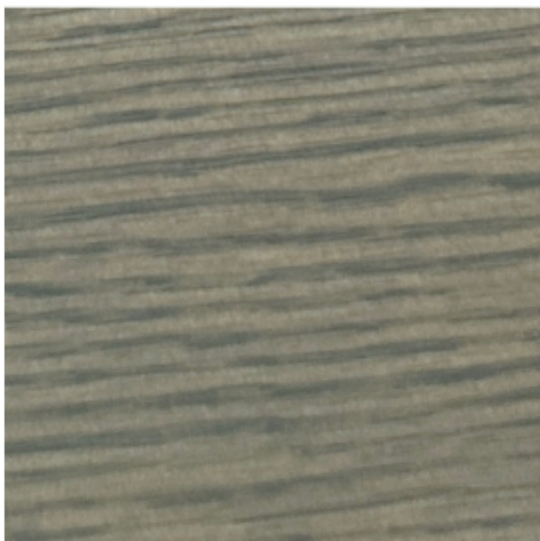
Oak NC
Matte PU Coating



Oak BKP
Matte PU Coating



Oak BP
Matte PU Coating



Oak FG
Matte PU Coating



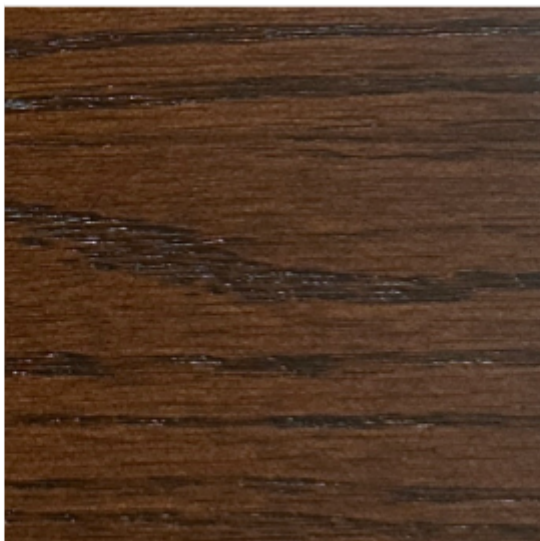
Oak FW
Matte PU Coating



Oak CG
Glossy PU Coating



Oak BN
Glossy PU Coating



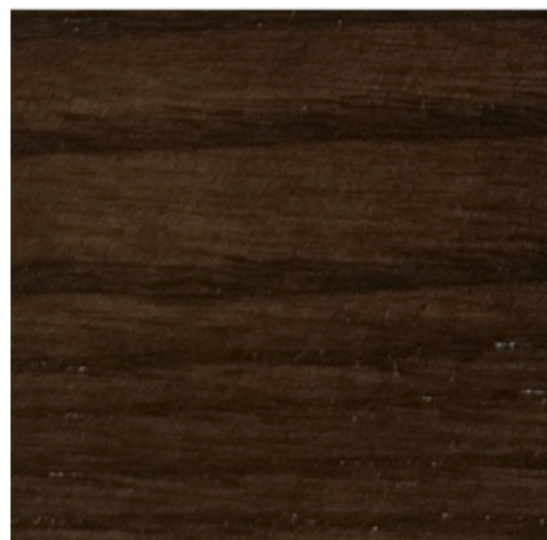
Oak HB
Glossy PU Coating



Oak BG
Glossy PU Coating



Oak BK
Glossy PU Coating

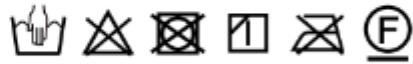


Oak CB
Glossy PU Coating

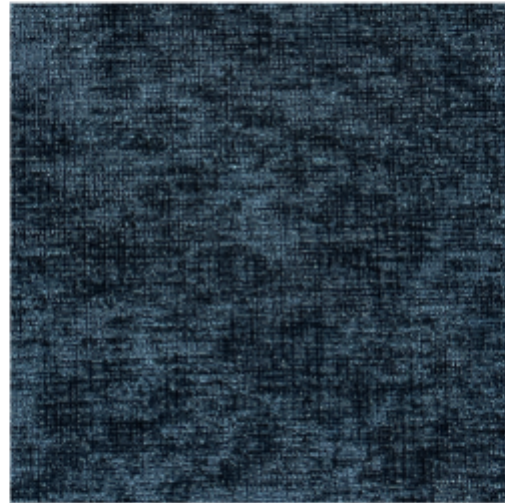
Shirakawa - Fabric

RANK C - MONARKA

This fabric is crafted using lustrous threads in a chenille weave. The result is a sumptuous texture that adds depth and subtle shading to the color scheme. Additionally, it has a silky smooth finish.



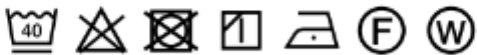
RANK C - MONARKA BK



RANK C - MONARKA BL

RANK C - EMPEROR

This fabric features a herringbone pattern with light, shiny threads and modern colors. It is made in England and has a unique appearance, perfect for adding sophistication to any space.



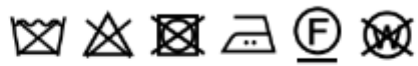
RANK C - EMPEROR NB



RANK C - EMPEROR RD

RANK C - AMARAL

This fabric features a molecular coating that is invisible to the naked eye, preventing dirt from seeping into the fibers. Its maintenance properties are excellent, thanks in part to Aqua Clean treatment, making it easy to remove everyday dirt with just water.



RANK C - AMARAL LB



RANK C - AMARAL WH



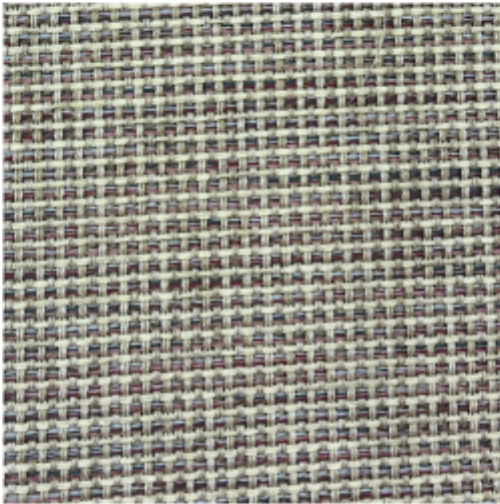
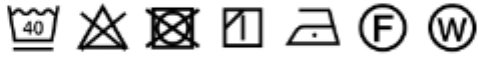
RANK C - AMARAL NB



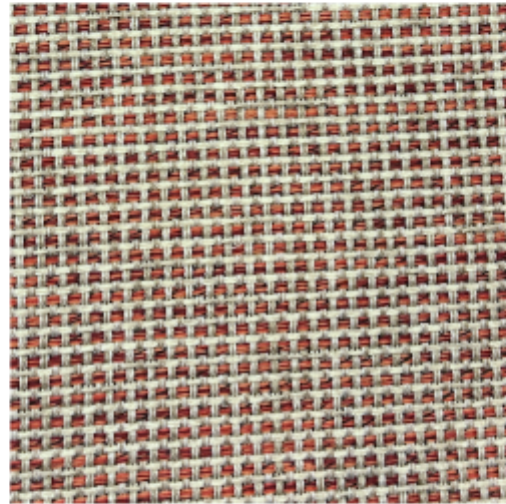
RANK C - AMARAL GY

RANK C - CHARM

This fabric has a loose weave and a mix of colored and malleable threads that create a soft and moist texture, evoking thoughts of Japanese paper. Its unique and uneven feel adds to its attractiveness.



RANK C - CHARM PU



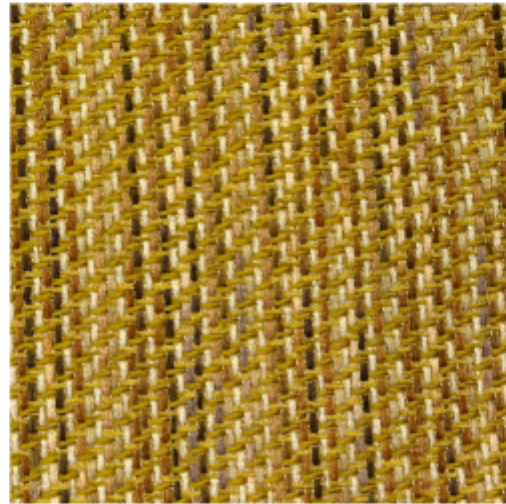
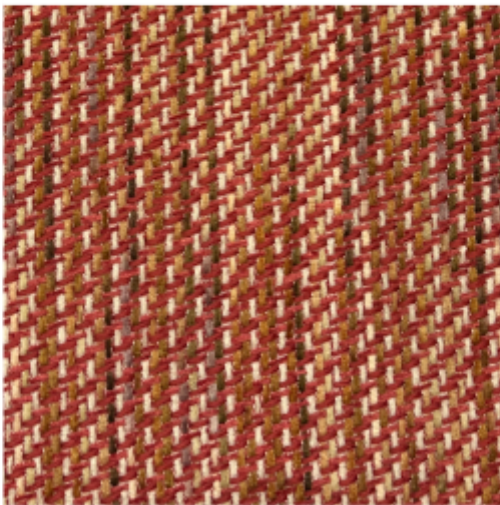
RANK C - CHARM RD



RANK C - CHARM BR

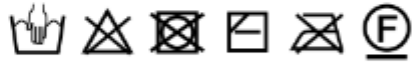
RANK C - STROKE

A twill weave is created by using soft color-changing thread vertically. The long threads stand out on the surface, giving it a smooth texture and calmness. A fabric that blends easily into any space.

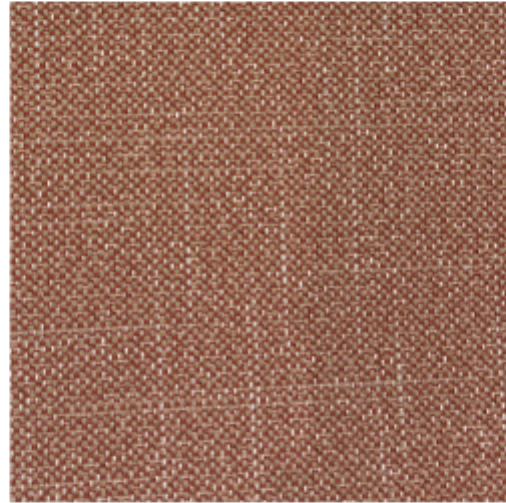
**RANK C - STROKE BE****RANK C - STROKE YE****RANK C - STROKE RD**

RANK C - THOUSAND

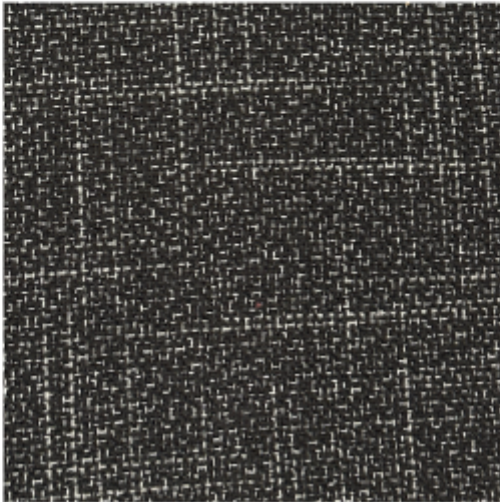
Our product utilizes RENU®, composed of upcycled fabrics and thread sourced from repurposed plastic bottles. This 100% recycled material is eco-friendly and contributes to reducing CO2 emissions. The incorporation of yarn-dyed fabric adds depth and richness to the overall design.



RANK C - THOUSAND BL



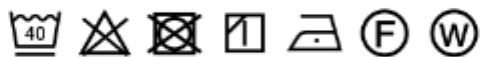
RANK C - THOUSAND TC



RANK C - THOUSAND BK

RANK C - DOCK

This fabric is authentically Italian and can resist everyday dirt. With a water-repellent finish, it keeps out moisture and dirt while an anti-fouling coating prevents dirt from getting onto the fibers. It also prevents intrusion.



RANK C - DOCK RD



RANK C - DOCK SG



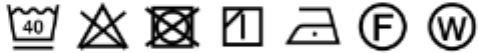
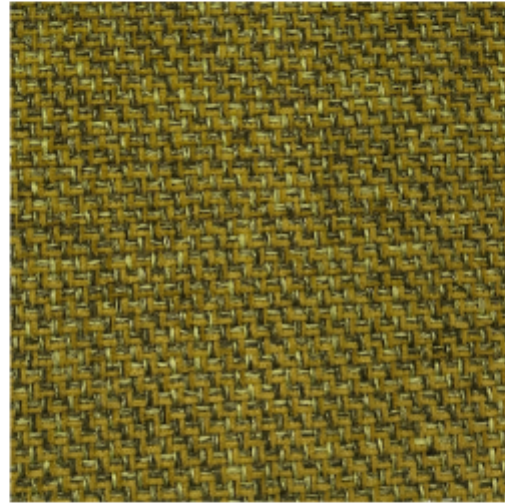
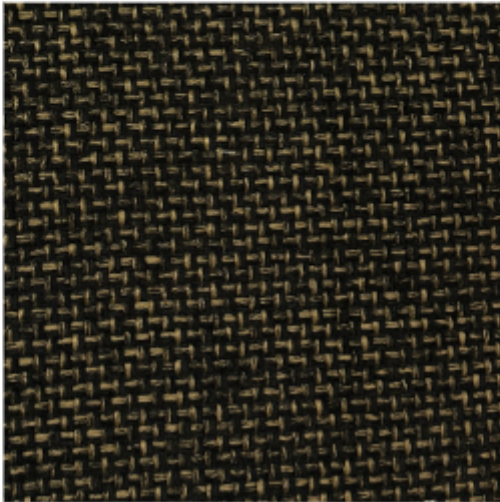
RANK C - DOCK BL



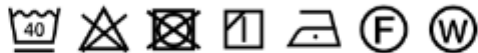
RANK C - DOCK BK

RANK C - BATON

The fabric of this product has a unique texture, combining both vertical and horizontal elements to create a crisp tweed appearance. Its modern and sophisticated design not only adds a touch of moisture, but also accents your interior beautifully.

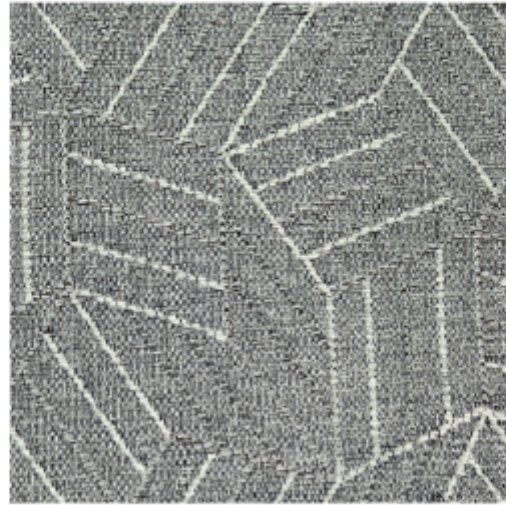
**RANK C - BATON IB****RANK C - BATON YG****RANK C - BATON DBR****RANK C - TIMBER**

Utilizing a three-dimensional, airy structure, this jacquard fabric has been woven with an abundance of small threads to produce a soft and delicate texture.





RANK C - TIMBER LG



RANK C - TIMBER SG



RANK C - TIMBER BK

RANK C - COLORATO

The mall's threads are dyed in four varying hues to produce a more intricate color combination. Its jacquard pattern allows for the addition of decorative dots as accents.



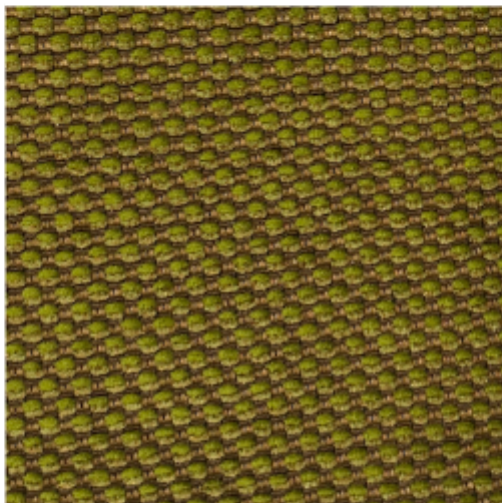
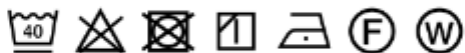
RANK C - COLORATO MT



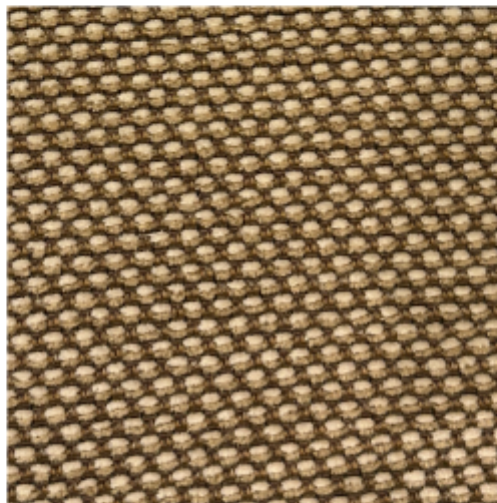
RANK C - COLORATO WH

RANK D - PLUTO

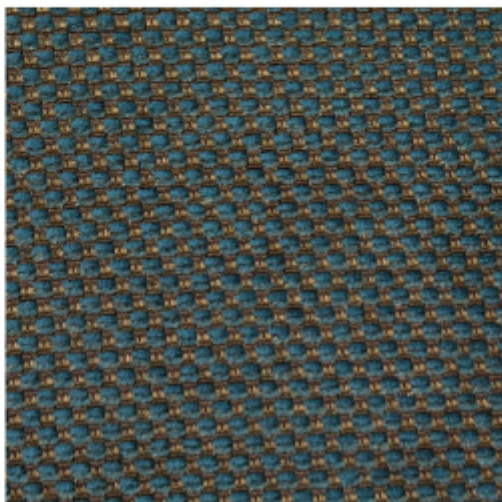
SAMIAMALL is versatile and provides a comfortable, elegant touch with subtle color changes that create a delicate and unique appearance. Its softness adds to its luxurious feel and a hint of airiness.



RANK D - PLUTO GR



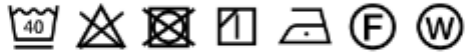
RANK D - PLUTO BE



RANK D - PLUTO BL

RANK D - VEGAS

This fabric boasts an impressive shading of each of its four thread colors. Made in England, it is warm and soft, with a texture reminiscent of wool.



RANK D - VEGAS BK



RANK D - VEGAS GY

RANK D - LAMOUS

A new high-quality suede-like material with a smooth texture and beautiful color. It has excellent water resistance and maintains a rich atmosphere for a long time without worrying about insects or mold.

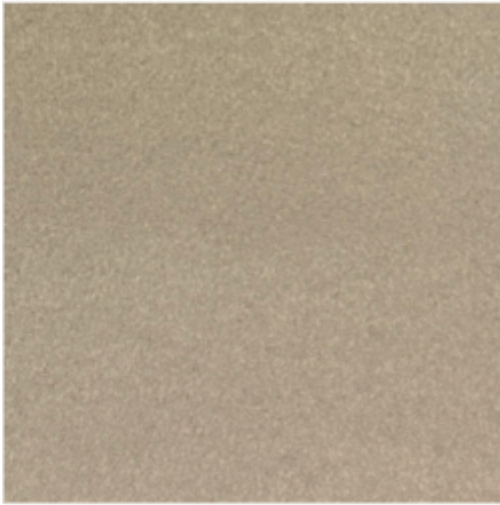
*Pet-Friendly



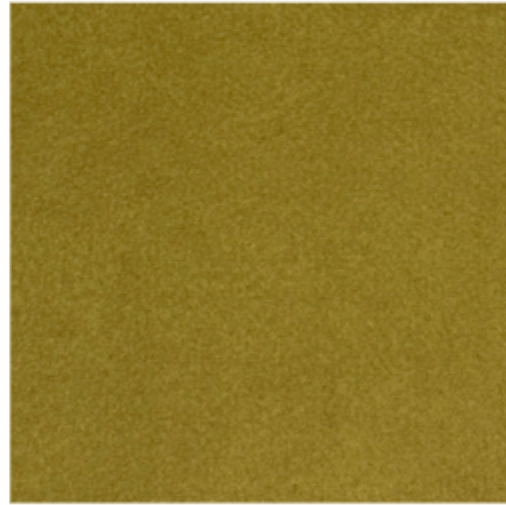
RANK D - LAMOUS 29



RANK D - LAMOUS 22



RANK D - LAMOUS 77



RANK D - LAMOUS 46



RANK D - LAMOUS 31



RANK D - LAMOUS 90

Shirakawa - Real Leather

RANK K - NEW SOFT

Experience the timeless comfort and durability of our Basic Embossed Leather sofa. Crafted from high-quality leather, this is the go-to choice for those seeking long-lasting luxury. Trust our proven track record of excellence, and enjoy the finest in leather material for your living space.



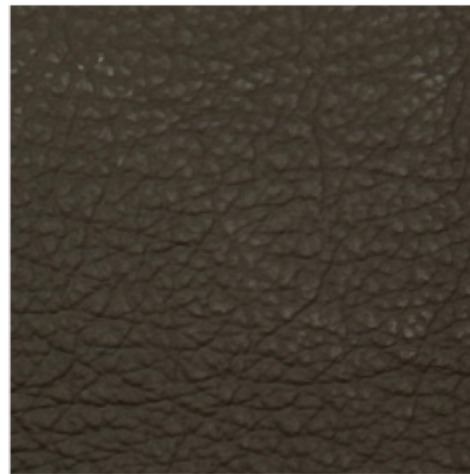
RANK K - NEW SOFT 11



RANK K - NEW SOFT 48



RANK K - NEW SOFT 41



RANK K - NEW SOFT 12



RANK K - NEW SOFT 13



RANK K - NEW SOFT 55

RANK M - KIRA

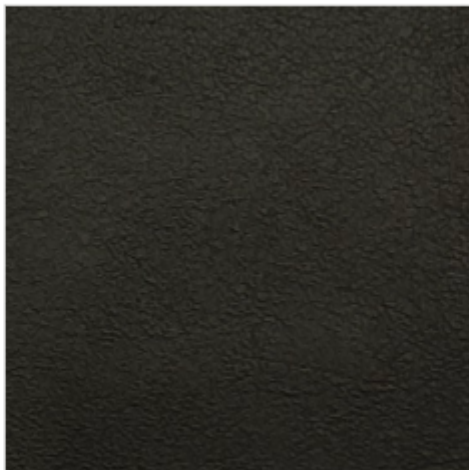
Upgrade to a luxurious feel with our genuine leather products. The soft, natural texture is enhanced with a semi-aniline finish, combining dyes and pigments for a sophisticated look. Experience the benefits of this high-quality material for yourself.



RANK M - KIRA 58



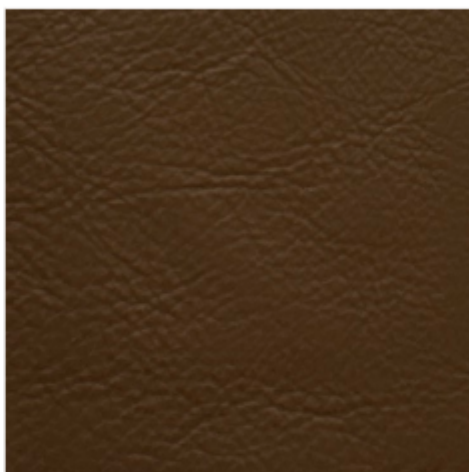
RANK M - KIRA 57



RANK M - KIRA 56

RANK M - LUX

Expertly crafted with a natural and luxurious texture, this product refrains from the use of strong paint to preserve its organic appeal. Experience the beauty of a product that speaks to your refined taste and values.



RANK M - LUX 676

Shirakawa - Synthetic Leather

RANK B - MOA

The deep hues and velvety texture are visually appealing. Similar to unbleached genuine leather, Sticky It boasts a plush, high-end feel and is highly resistant to abrasion for long-lasting durability. Overall, it is a material known for its exceptional strength.



RANK B - MOA 2



RANK B - MOA 3



RANK B - MOA 6