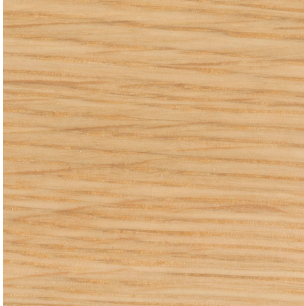


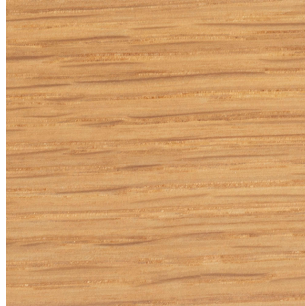
HIDA SANGYO WOOD CHOICE

White Oak

Solid and hard, the wood grain is straight with a unique presence. A shining silver grain similar to the stripes on the back of a tiger, known as tiger stripes, appears, giving it a unique look. Hida Sangyo mainly uses North American white oak that is around 100 years old. *Oak wood may be used for some parts such as curved wood parts.



OAK-WO
(polyurethane finish)



OAK-OU
(polyurethane finish)



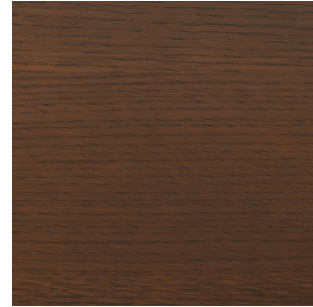
OAK-N5
(polyurethane finish)



OAK-C4
(polyurethane finish)



OAK-DU
(polyurethane finish)



OAK-UW
(polyurethane finish)



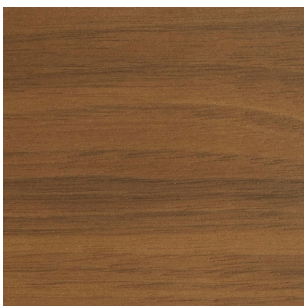
OAK-BK
(polyurethane finish)



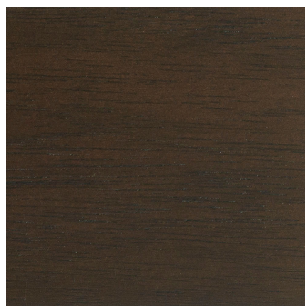
OAK-OF
(oil finish) *Extra charge

Walnut

Walnut is one of the world's three major woods along with teak and mahogany. It is a high-class material with a subdued color and a beautiful heathered grain with a profound feeling. It will be polished and the texture will deepen as you use it. Hida Sangyo uses black walnut wood from North America.



WALNUT-WA
(polyurethane finish)



WALNUT-GW
(polyurethane finish)

RANK B



SROR

Composition
polyester 100%
It is a fabric with an elegant sheen and a soft touch.

Dry Clean OK
Water Washable (by Hand) OK



SRBR

Composition
polyester 100%
It is a fabric with an elegant sheen and a soft touch.

Dry Clean OK
Water Washable (by Hand) OK



SRLG

Composition
polyester 100%
It is a fabric with an elegant sheen and a soft touch.

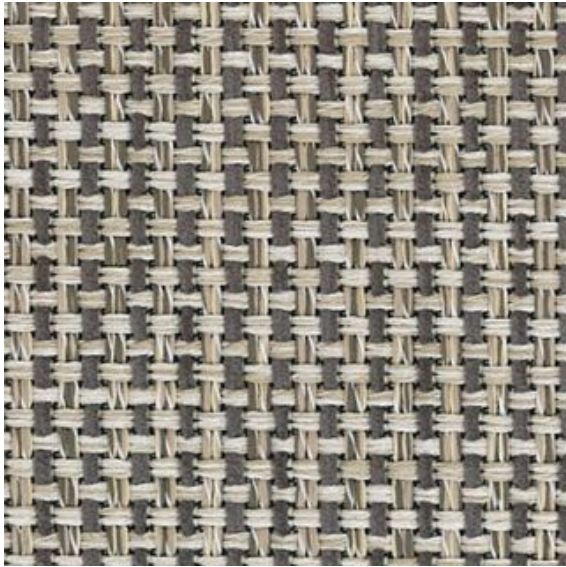
Dry Clean OK
Water Washable (by Hand) OK



SRDR

Composition
polyester 100%
It is a fabric with an elegant sheen and a soft touch.

Dry Clean OK
Water Washable (by Hand) OK



SA95

Composition

polyester 100%

The natural texture is expressed by mixing the soft feel mall thread and the exquisitely different colored threads.

Dry Clean OK

Water Washable (by Hand) OK



SA98

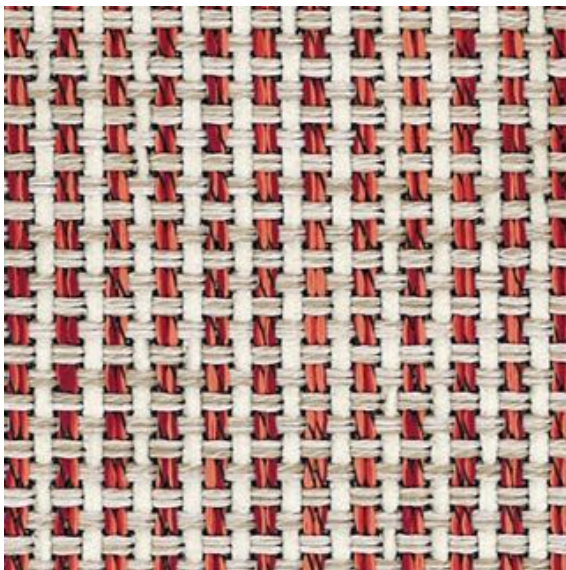
Composition

polyester 100%

The natural texture is expressed by mixing the soft feel mall thread and the exquisitely different colored threads.

Dry Clean OK

Water Washable (by Hand) OK



SA15

Composition

polyester 100%

The natural texture is expressed by mixing the soft feel mall thread and the exquisitely different colored threads.

Dry Clean OK

Water Washable (by Hand) OK



SA85

Composition

polyester 100%

The natural texture is expressed by mixing the soft feel mall thread and the exquisitely different colored threads.

Dry Clean OK

Water Washable (by Hand) OK



SPLG

Composition

polyester 100%

The soft texture that envelops you softly, and the exquisitely mixed weave in a plain atmosphere is attractive.

Dry Clean OK

Water Washable (by Hand) OK



SIV

Composition

polyester 100%

It is a fabric with a cute expression with a small dot pattern.

Dry Clean OK

Water Washable (by Hand) OK



SBE

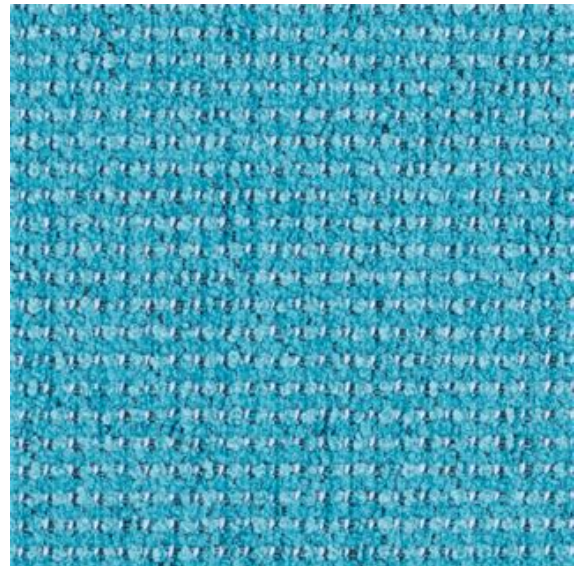
Composition

polyester 100%

It is a fabric with a cute expression with a small dot pattern.

Dry Clean OK

Water Washable (by Hand) OK



SLBU

Composition

polyester 100%

It is a fabric with a cute expression with a small dot pattern.

Dry Clean OK

Water Washable (by Hand) OK



SBU

Composition

polyester 100%

It is a fabric with a cute expression with a small dot pattern.

Dry Clean OK

Water Washable (by Hand) OK



SPU

Composition

polyester 100%

It is a fabric with a cute expression with a small dot pattern.

Dry Clean OK

Water Washable (by Hand) OK



SDBR

Composition

polyester 100%

It is a fabric with a cute expression with a small dot pattern.

Dry Clean OK

Water Washable (by Hand) OK



DCRE

Composition

polyester 81%, cotton 12%, acrylic 7%

The fabric has been treated to be stain-resistant, making it difficult for stains to stick and easy to remove. Recommended for families with pets and children.

Dry Clean OK

Water Washable (by Hand) OK

Water-repellent

Resistant to scratches



DCYG

Composition

polyester 81%, cotton 12%, acrylic 7%

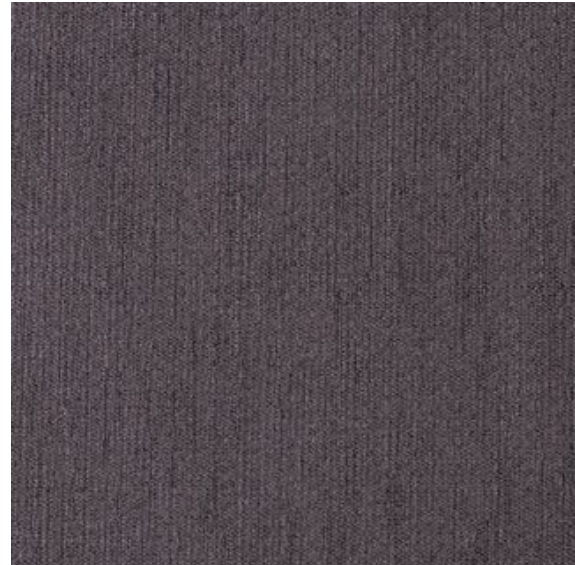
The fabric has been treated to be stain-resistant, making it difficult for stains to stick and easy to remove. Recommended for families with pets and children.

Dry Clean OK

Water Washable (by Hand) OK

Water-repellent

Resistant to scratches



DCPU

Composition

polyester 81%, cotton 12%, acrylic 7%

The fabric has been treated to be stain-resistant, making it difficult for stains to stick and easy to remove. Recommended for families with pets and children.

Dry Clean OK

Water Washable (by Hand) OK

Water-repellent

Resistant to scratches



DCBR

Composition

polyester 81%, cotton 12%, acrylic 7%

The fabric has been treated to be stain-resistant, making it difficult for stains to stick and easy to remove. Recommended for families with pets and children.

Dry Clean OK

Water Washable (by Hand) OK

Water-repellent

Resistant to scratches



DCB

Composition

polyester 81%, cotton 12%, acrylic 7%

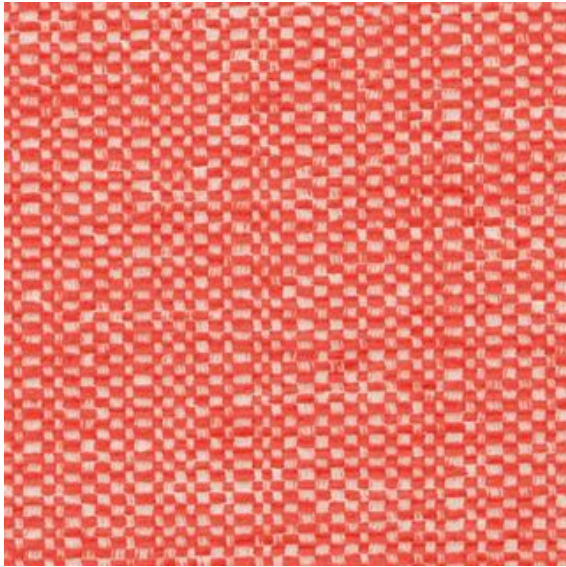
The fabric has been treated to be stain-resistant, making it difficult for stains to stick and easy to remove. Recommended for families with pets and children.

Dry Clean OK

Water Washable (by Hand) OK

Water-repellent

Resistant to scratches



PHRE

Composition
polyester 100%
It is a fabric with attractive colors and rich color variations.

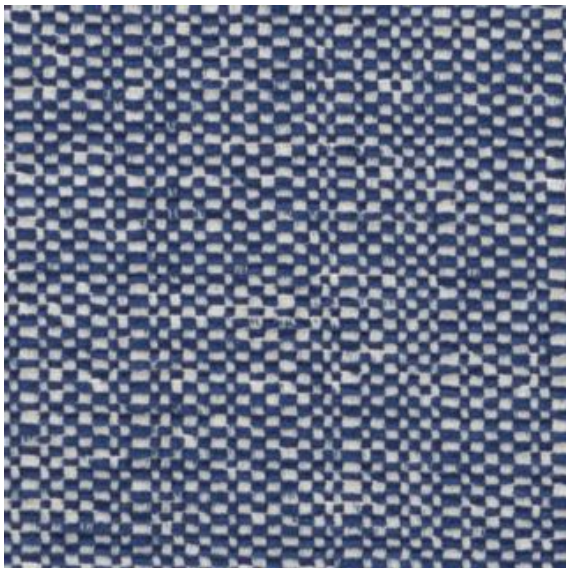
Dry Clean OK
Water Washable (by Hand) OK



PHYE

Composition
polyester 100%
It is a fabric with attractive colors and rich color variations.

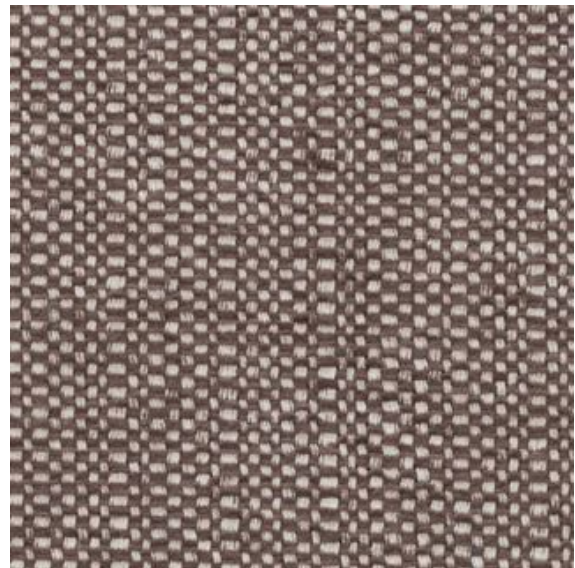
Dry Clean OK
Water Washable (by Hand) OK



PHBU

Composition
polyester 100%
It is a fabric with attractive colors and rich color variations.

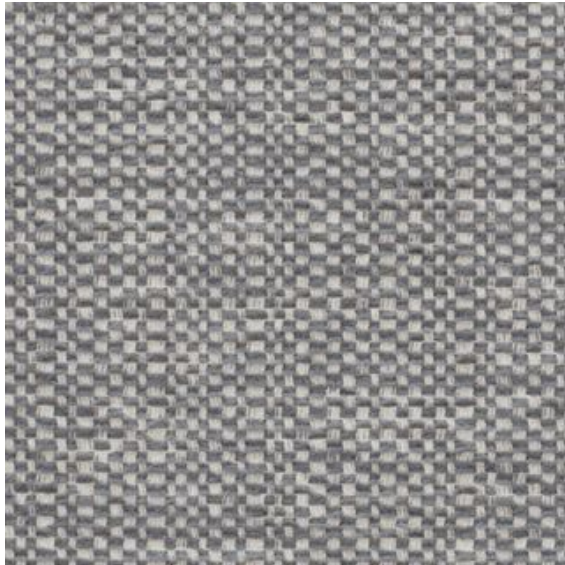
Dry Clean OK
Water Washable (by Hand) OK



PHDR

Composition
polyester 100%
It is a fabric with attractive colors and rich color variations.

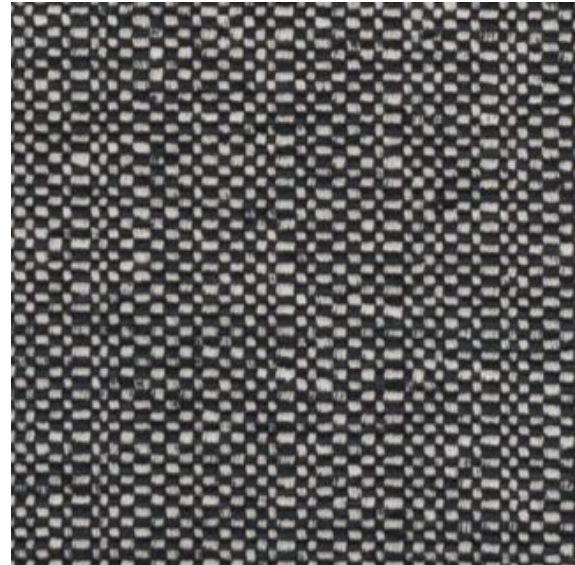
Dry Clean OK
Water Washable (by Hand) OK



PHGR

Composition
polyester 100%
It is a fabric with attractive colors and rich color variations.

Dry Clean OK
Water Washable (by Hand) OK



PHB

Composition
polyester 100%
It is a fabric with attractive colors and rich color variations.

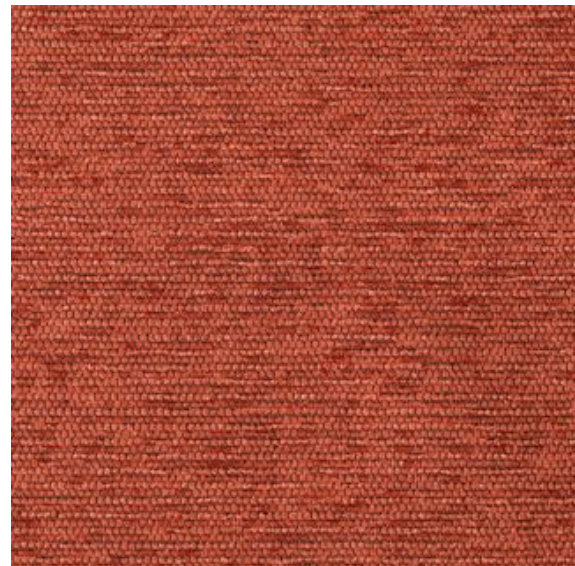
Dry Clean OK
Water Washable (by Hand) OK



MIBE

Composition
polyester 100%
The fabric has been treated to be stain-resistant, making it difficult for stains to stick and easy to remove. Recommended for families with pets and children.

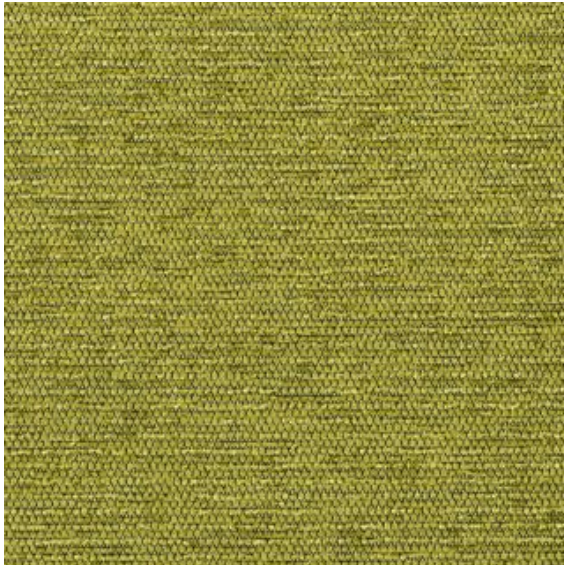
Dry Clean OK
Water Washable (by Hand) OK
Resistant to Scratch
Silver (μ -func®): antibacterial, deodorant, and antistatic effects



MIRE

Composition
polyester 100%
The fabric has been treated to be stain-resistant, making it difficult for stains to stick and easy to remove. Recommended for families with pets and children.

Dry Clean OK
Water Washable (by Hand) OK
Resistant to Scratch
Silver (μ -func®): antibacterial, deodorant, and antistatic effects



MIG

Composition

polyester 100%

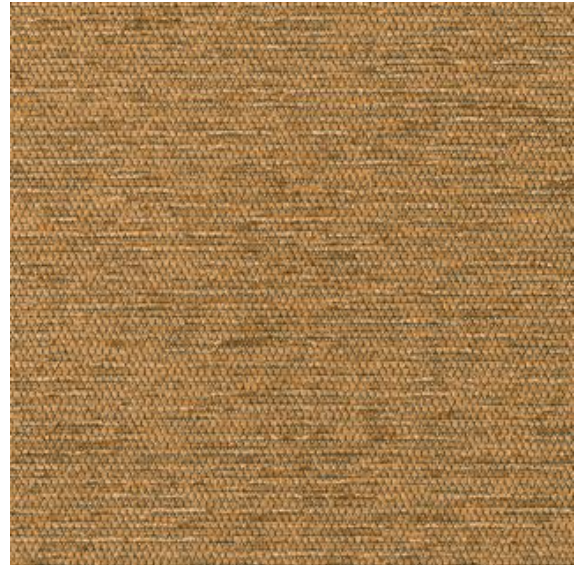
The fabric has been treated to be stain-resistant, making it difficult for stains to stick and easy to remove. Recommended for families with pets and children.

Dry Clean OK

Water Washable (by Hand) OK

Resistant to Scratch

Silver (μ -func®): antibacterial, deodorant, and antistatic effects



MIBR

Composition

polyester 100%

The fabric has been treated to be stain-resistant, making it difficult for stains to stick and easy to remove. Recommended for families with pets and children.

Dry Clean OK

Water Washable (by Hand) OK

Resistant to Scratch

Silver (μ -func®): antibacterial, deodorant, and antistatic effects



RCBE

Composition

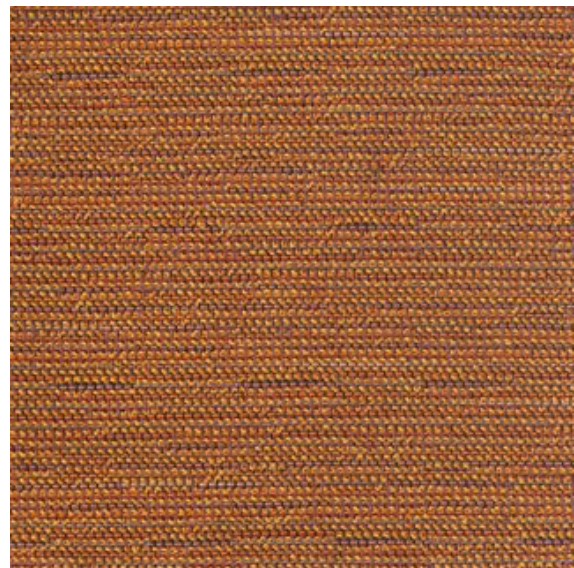
polyester 100%

The fabric has been treated to be stain-resistant, making it difficult for stains to stick and easy to remove. Recommended for families with pets and children.

Dry Clean OK

Water Washable (by Hand) OK

Silver (μ -func®): antibacterial, deodorant, and antistatic effects



RCOR

Composition

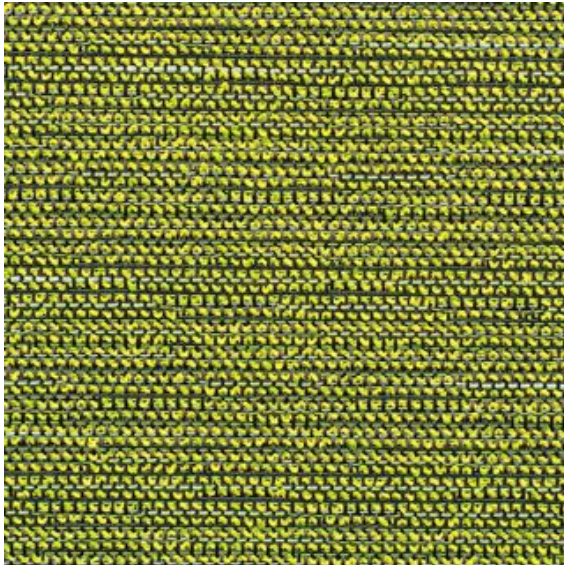
polyester 100%

The fabric has been treated to be stain-resistant, making it difficult for stains to stick and easy to remove. Recommended for families with pets and children.

Dry Clean OK

Water Washable (by Hand) OK

Silver (μ -func®): antibacterial, deodorant, and antistatic effects



RCYG

Composition

polyester 100%

The antibacterial, deodorizing, and antistatic effects of silver thread (μ -func®) last semipermanently, making it a safe and human-friendly fiber.

Dry Clean OK

Water Washable (by Hand) OK

Silver (μ -func®): antibacterial, deodorant, and antistatic effects



RCPU

Composition

polyester 100%

The antibacterial, deodorizing, and antistatic effects of silver thread (μ -func®) last semipermanently, making it a safe and human-friendly fiber.

Dry Clean OK

Water Washable (by Hand) OK

Silver (μ -func®): antibacterial, deodorant, and antistatic effects



RCBR

Composition

polyester 100%

The antibacterial, deodorizing, and antistatic effects of silver thread (μ -func®) last semipermanently, making it a safe and human-friendly fiber.

Dry Clean OK

Water Washable (by Hand) OK

Silver (μ -func®): antibacterial, deodorant, and antistatic effects

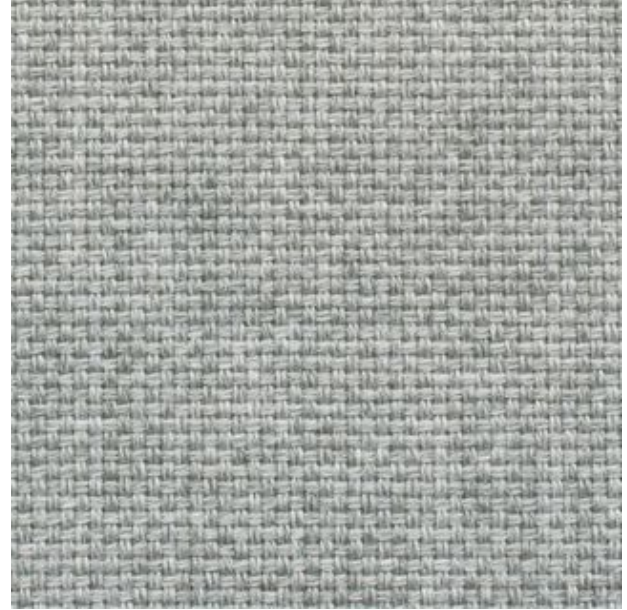
RANK B DRY CLEAN



GRGR

Composition
cotton 59.5%, rayon 36.5%, acrylic 4%
With a rough texture, the gradation-dyed warp threads create a beautiful kasuri pattern.

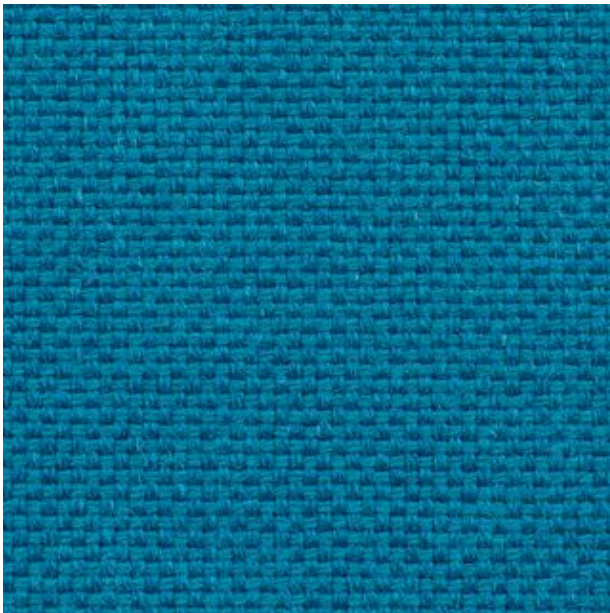
Dry Clean OK



PTGY

Composition
acrylic 70%, wool 30%
A durable fabric with good color development and resistance to wear and tear.

Dry Clean OK



PTLB

Composition
acrylic 70%, wool 30%
A durable fabric with good color development and resistance to wear and tear.

Dry Clean OK



PTDR

Composition
acrylic 70%, wool 30%
A durable fabric with good color development and resistance to wear and tear.

Dry Clean OK

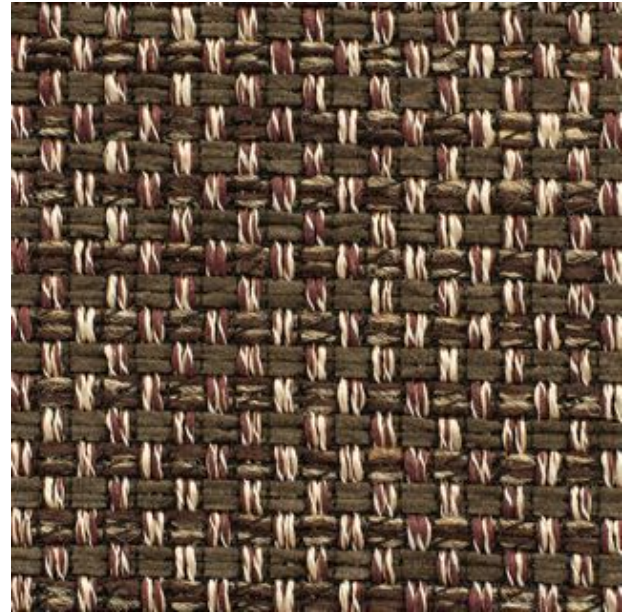


CRNV

Composition

polyester 90%, rayon 8%, wool1%, acrylic 1%
It is an elegant cloth that expresses the depth of color by combining lustrous yarn and top yarn with a rough texture of Nanako.

Dry Clean OK

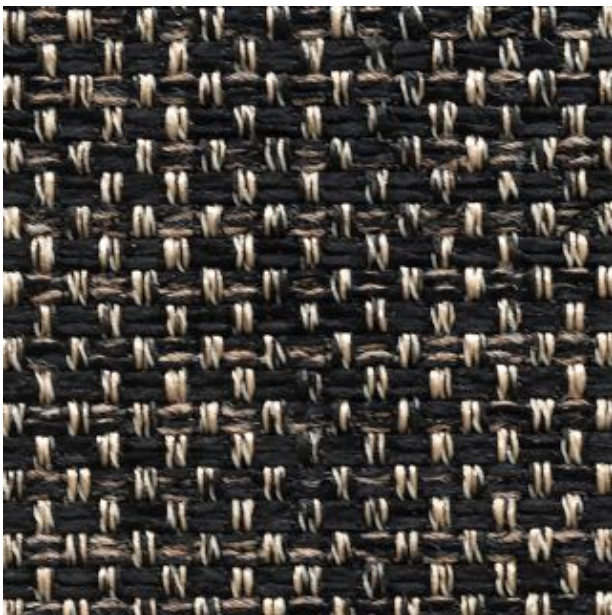


CRBR

Composition

polyester 90%, rayon 8%, wool1%, acrylic 1%
It is an elegant cloth that expresses the depth of color by combining lustrous yarn and top yarn with a rough texture of Nanako.

Dry Clean OK



CRB

Composition

polyester 90%, rayon 8%, wool1%, acrylic 1%
It is an elegant cloth that expresses the depth of color by combining lustrous yarn and top yarn with a rough texture of Nanako.

Dry Clean OK



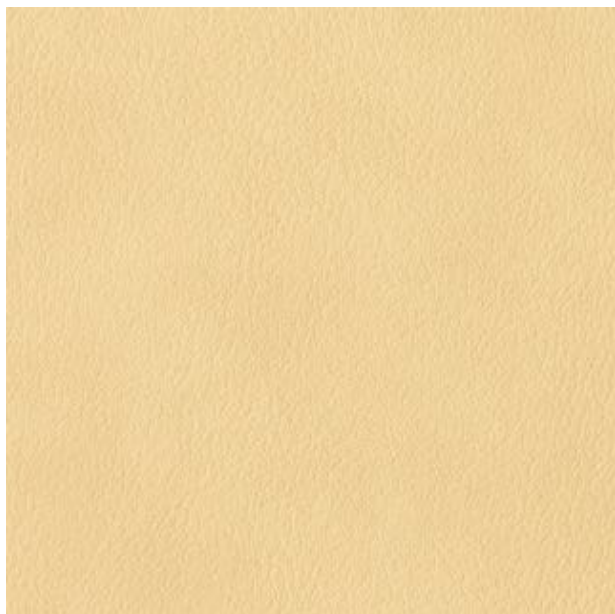
CRBE

Composition

polyester 90%, rayon 8%, wool1%, acrylic 1%
It is an elegant cloth that expresses the depth of color by combining lustrous yarn and top yarn with a rough texture of Nanako.

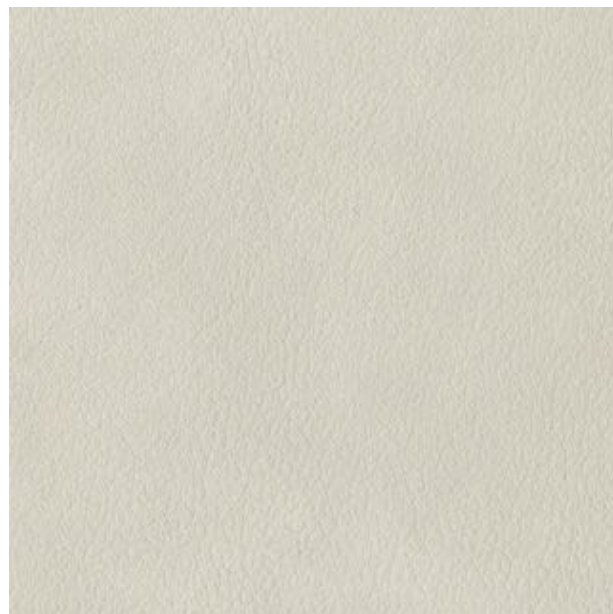
Dry Clean OK

RANK B SYNTHETIC LEATHER



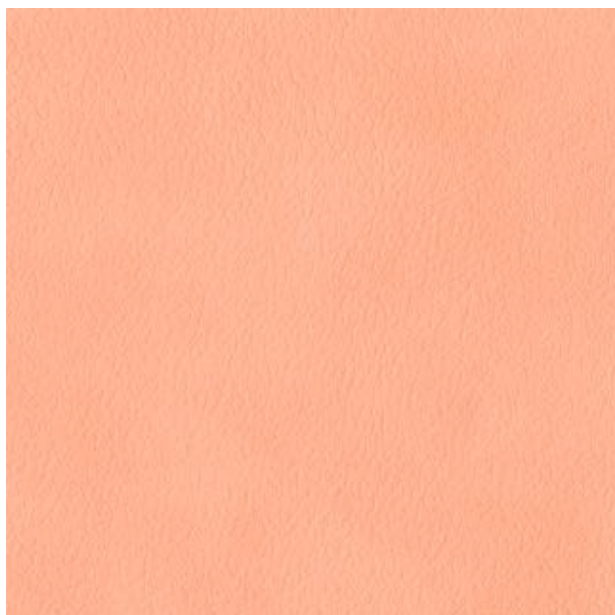
HILBE

Synthetic Leather with a soft texture and a familiar color to the wood. Excellent durability and functionality.



HILGR

Synthetic Leather with a soft texture and a familiar color to the wood. Excellent durability and functionality.



HIP

Synthetic Leather with a soft texture and a familiar color to the wood. Excellent durability and functionality.



HILBU

Synthetic Leather with a soft texture and a familiar color to the wood. Excellent durability and functionality.



HIBU

Synthetic Leather with a soft texture and a familiar color to the wood. Excellent durability and functionality.



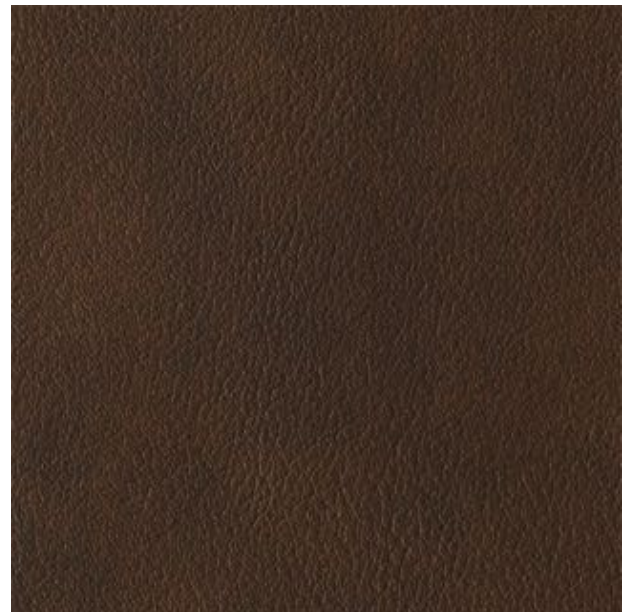
HICA

Synthetic Leather with a soft texture and a familiar color to the wood. Excellent durability and functionality.



HIBR

Synthetic Leather with a soft texture and a familiar color to the wood. Excellent durability and functionality.



HIDBR

Synthetic Leather with a soft texture and a familiar color to the wood. Excellent durability and functionality.



HIB

Synthetic Leather with a soft texture and a familiar color to the wood. Excellent durability and functionality.

RANK C

Highly functional fabric.



GCLGR

Composition
polyester 100%
Embossed like leather, it is a fabric that exudes the dignity of genuine leather.

Dry Clean OK
Water Washable (by Hand) OK
Resistant to Scratch



GCGR

Composition
polyester 100%
Embossed like leather, it is a fabric that exudes the dignity of genuine leather.

Dry Clean OK
Water Washable (by Hand) OK
Resistant to Scratch



GCBR

Composition
polyester 100%
Embossed like leather, it is a fabric that exudes the dignity of genuine leather.

Dry Clean OK
Water Washable (by Hand) OK
Resistant to Scratch



SP10

Composition
polyester 100%
AquaClean: An invisible molecular film prevents dirt from penetrating into the fibers. The fabric is easy to maintain.
Oeko-Tex® Standard 100: Oeko-Tex® Standard 100 is one of the world's best-known labels for textiles tested for harmful substances. This label certifies that every component of the product, from the fabric to the thread and accessories, has been rigorously tested against a list of up to 350 toxic chemicals.

Dry Clean OK
Water Washable (by Hand) OK
Special treatment: AquaClean (Easy cleaning with water)



SP19

Composition
 polyester 100%
Aquaclean: An invisible molecular film prevents dirt from penetrating into the fibers. The fabric is easy to maintain.
Oeko-Tex® Standard 100: Oeko-Tex® Standard 100 is one of the world's best-known labels for textiles tested for harmful substances. This label certifies that every component of the product, from the fabric to the thread and accessories, has been rigorously tested against a list of up to 350 toxic chemicals.

Dry Clean OK
Water Washable (by Hand) OK
Special treatment: Aquaclean (Easy cleaning with water)



SP08

Composition
 polyester 100%
Aquaclean: An invisible molecular film prevents dirt from penetrating into the fibers. The fabric is easy to maintain.
Oeko-Tex® Standard 100: Oeko-Tex® Standard 100 is one of the world's best-known labels for textiles tested for harmful substances. This label certifies that every component of the product, from the fabric to the thread and accessories, has been rigorously tested against a list of up to 350 toxic chemicals.

Dry Clean OK
Water Washable (by Hand) OK
Special treatment: Aquaclean (Easy cleaning with water)



SP13

Composition
 polyester 100%
Aquaclean: An invisible molecular film prevents dirt from penetrating into the fibers. The fabric is easy to maintain.
Oeko-Tex® Standard 100: Oeko-Tex® Standard 100 is one of the world's best-known labels for textiles tested for harmful substances. This label certifies that every component of the product, from the fabric to the thread and accessories, has been rigorously tested against a list of up to 350 toxic chemicals.

Dry Clean OK
Water Washable (by Hand) OK
Special treatment: Aquaclean (Easy cleaning with water)



SP17

Composition
 polyester 100%
Aquaclean: An invisible molecular film prevents dirt from penetrating into the fibers. The fabric is easy to maintain.
Oeko-Tex® Standard 100: Oeko-Tex® Standard 100 is one of the world's best-known labels for textiles tested for harmful substances. This label certifies that every component of the product, from the fabric to the thread and accessories, has been rigorously tested against a list of up to 350 toxic chemicals.

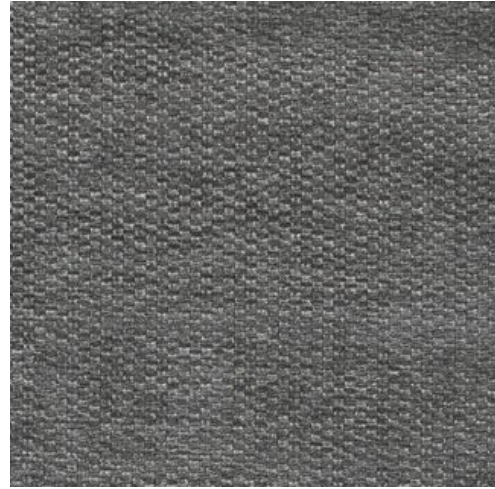
Dry Clean OK
Water Washable (by Hand) OK
Special treatment: Aquaclean (Easy cleaning with water)



DLLG

Composition
polyester 75%, rayon 25%
A fabric with a soft, soft touch and an elegant sheen that is unique to rayon malls.

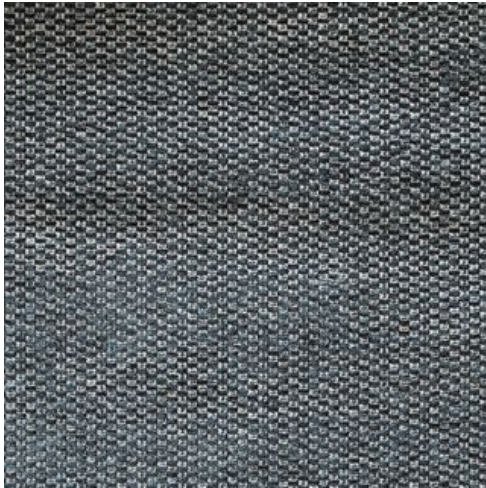
Dry Clean OK



DLGR

Composition
polyester 75%, rayon 25%
A fabric with a soft, soft touch and an elegant sheen that is unique to rayon malls.

Dry Clean OK



DLDB

Composition
polyester 75%, rayon 25%
A fabric with a soft, soft touch and an elegant sheen that is unique to rayon malls.

Dry Clean OK



NADB

Composition
polyester 100%
You can also coordinate with fabric KTBU/KTDG.

Dry Clean OK
Water Washable (by Hand) OK



NADG

Composition
polyester 100%
You can also coordinate with fabric KTBU/KTDG.

Dry Clean OK
Water Washable (by Hand) OK



BMBU

Composition
polyester 100%
It is an attractive fabric with a mixed weave. It has a voluminous feel and a good tension, and is recommended for sofas with large areas.

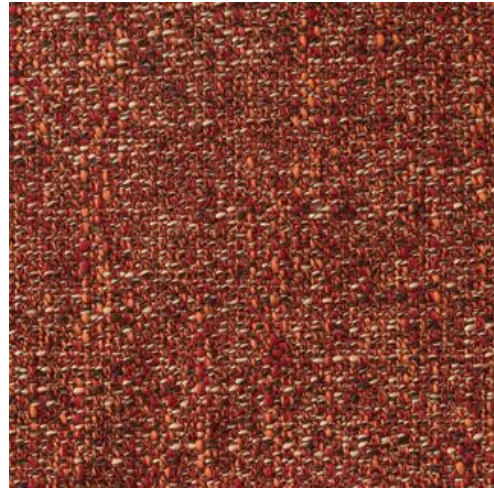
Dry Clean OK
Water Washable (by Hand) OK



BMG

Composition
polyester 100%
It is an attractive fabric with a mixed weave. It has a voluminous feel and a good tension, and is recommended for sofas with large areas.

Dry Clean OK
Water Washable (by Hand) OK



BGRE

Composition
polyester 100%
It is an attractive fabric with a mixed weave. It has a voluminous feel and a good tension, and is recommended for sofas with large areas.

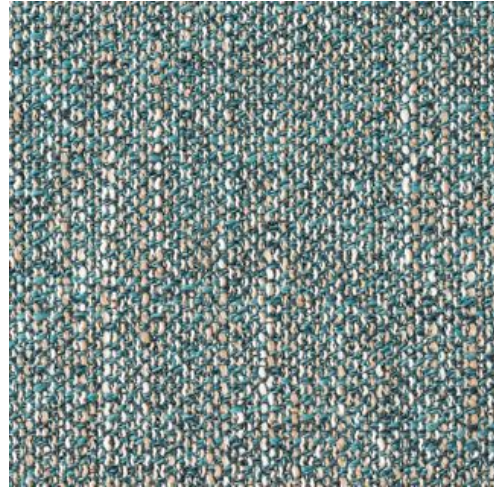
Dry Clean OK
Water Washable (by Hand) OK



BGGR

Composition
polyester 100%
It is an attractive fabric with a mixed weave. It has a voluminous feel and a good tension, and is recommended for sofas with large areas.

Dry Clean OK
Water Washable (by Hand) OK



BGG

Composition
polyester 100%
It is an attractive fabric with a mixed weave. It has a voluminous feel and a good tension, and is recommended for sofas with large areas.

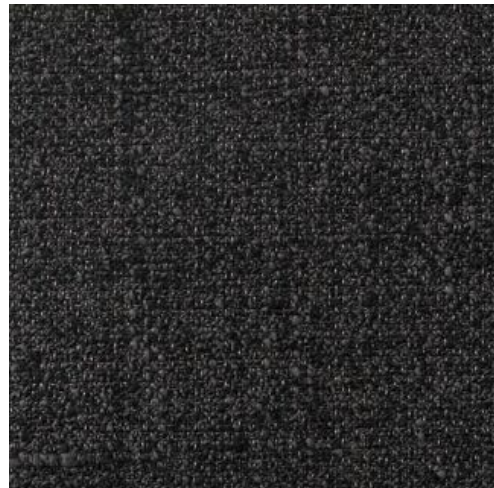
Dry Clean OK
Water Washable (by Hand) OK



BGDG

Composition
polyester 100%
It is an attractive fabric with a mixed weave. It has a voluminous feel and a good tension, and is recommended for sofas with large areas.

Dry Clean OK
Water Washable (by Hand) OK



BGB

Composition
polyester 100%
It is an attractive fabric with a mixed weave. It has a voluminous feel and a good tension, and is recommended for sofas with large areas.

Dry Clean OK
Water Washable (by Hand) OK



LSBE

Composition
polyester 100%
Golden threads are used for the warp threads, making it a gorgeous fabric that is soft to the touch.

Dry Clean OK
Water Washable (by Hand) OK
Silver (μ-func®): antibacterial, deodorant, and antistatic effects



LSG

Composition
polyester 100%
Golden threads are used for the warp threads, making it a gorgeous fabric that is soft to the touch.

Dry Clean OK
Water Washable (by Hand) OK
Silver (μ-func®): antibacterial, deodorant, and antistatic effects



LSPU

Composition
polyester 100%
Golden threads are used for the warp threads, making it a gorgeous fabric that is soft to the touch.

Dry Clean OK
Water Washable (by Hand) OK
Silver (μ-func®): antibacterial, deodorant, and antistatic effects

RANK E

Fabric with great texture and an attractive expression.

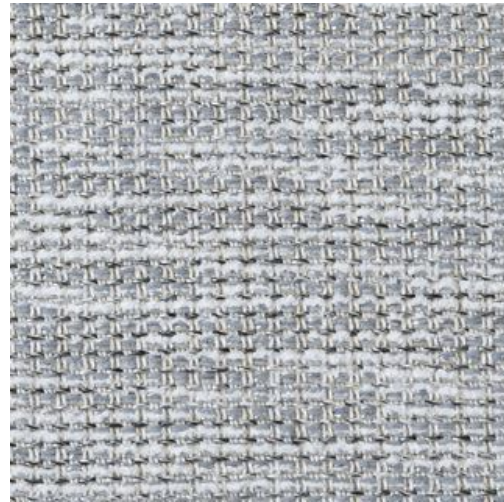


ALBE

Composition
polyester 100%

An attractive fabric with a deep expression that is woven by twisting threads with different textures, thicknesses, and colors. The fabric is thick and has a luxurious finish.

Dry Clean OK
Water Washable (by Hand) OK



ALLG

Composition
polyester 100%

An attractive fabric with a deep expression that is woven by twisting threads with different textures, thicknesses, and colors. The fabric is thick and has a luxurious finish.

Dry Clean OK
Water Washable (by Hand) OK



ALDB

Composition
polyester 100%

An attractive fabric with a deep expression that is woven by twisting threads with different textures, thicknesses, and colors. The fabric is thick and has a luxurious finish.

Dry Clean OK
Water Washable (by Hand) OK



KTBU

Composition
polyester 100%

In commemoration of the development of the No. 7 chair, this fabric was created by a dyeing artisan, Samiro Yunoki. The position of the pattern cannot be specified. You can also coordinate it with fabric NADB/NADG.

Dry Clean OK
Water Washable (by Hand) OK

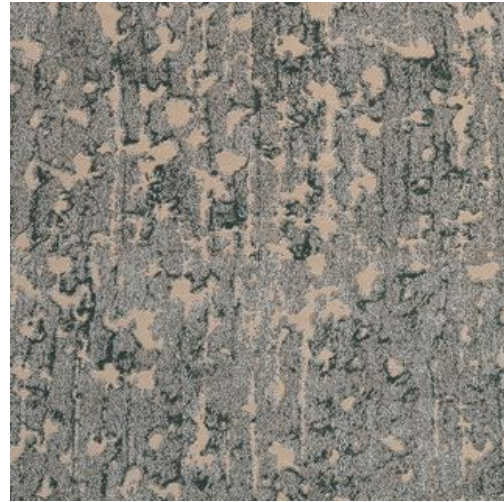


KTDG

Composition
polyester 100%

In commemoration of the development of the No. 7 chair, this fabric was created by a dyeing artisan, Samiro Yunoki. The position of the pattern cannot be specified. You can also coordinate it with fabric NADB/NADG.

Dry Clean OK
Water Washable (by Hand) OK



KMBE

Composition
polyester 100%

The fabric was designed by artist Kaoru Iga of the art brand HERALBONY. The brand is expanding its involvement with welfare with new ideas. This high-quality upholstery fabric is produced in Bishu (western Aichi Prefecture), one of Japan's leading textile production areas.

Dry Clean OK
Water Washable (by Hand) OK



KMG

Composition
polyester 100%

The fabric was designed by artist Kaoru Iga of the art brand HERALBONY. The brand is expanding its involvement with welfare with new ideas. This high-quality upholstery fabric is produced in Bishu (western Aichi Prefecture), one of Japan's leading textile production areas.

Dry Clean OK
Water Washable (by Hand) OK



JPBE

Composition
polyester 95%, nylon 5%

High quality softness with a smooth feel. The luxurious use of Samiamol, which uses ultra-fine fibers that are 1/15th the thickness of a human hair, creates a texture that makes you want to rub your cheeks.

Dry Clean OK
Water Washable (by Hand) OK



JPDB

Composition
polyester 95%, nylon 5%
High quality softness with a smooth feel. The luxurious use of Samiamol, which uses ultra-fine fibers that are 1/15th the thickness of a human hair, creates a texture that makes you want to rub your cheeks.

Dry Clean OK
Water Washable (by Hand) OK



TSBE

Composition
polyester 73%, recycled cotton 27%
AquaClean: An invisible molecular film prevents dirt from penetrating into the fibers. The fabric is easy to maintain.
Oeko-Tex® Standard 100: Oeko-Tex® Standard 100 is one of the world's best-known labels for textiles tested for harmful substances. This label certifies that every component of the product, from the fabric to the thread and accessories, has been rigorously tested against a list of up to 350 toxic chemicals.

Special treatment: AquaClean (Easy cleaning with water)
Dry Clean OK



TSBR

Composition
polyester 73%, recycled cotton 27%
AquaClean: An invisible molecular film prevents dirt from penetrating into the fibers. The fabric is easy to maintain.
Oeko-Tex® Standard 100: Oeko-Tex® Standard 100 is one of the world's best-known labels for textiles tested for harmful substances. This label certifies that every component of the product, from the fabric to the thread and accessories, has been rigorously tested against a list of up to 350 toxic chemicals.

Special treatment: AquaClean (Easy cleaning with water)
Dry Clean OK



TSLGR

Composition
polyester 73%, recycled cotton 27%
AquaClean: An invisible molecular film prevents dirt from penetrating into the fibers. The fabric is easy to maintain.
Oeko-Tex® Standard 100: Oeko-Tex® Standard 100 is one of the world's best-known labels for textiles tested for harmful substances. This label certifies that every component of the product, from the fabric to the thread and accessories, has been rigorously tested against a list of up to 350 toxic chemicals.

Special treatment: AquaClean (Easy cleaning with water)
Dry Clean OK



TSB

Composition

polyester 73%, recycled cotton 27%

Aquaclean: An invisible molecular film prevents dirt from penetrating into the fibers. The fabric is easy to maintain.

Oeko-Tex® Standard 100: Oeko-Tex® Standard 100 is one of the world's best-known labels for textiles tested for harmful substances. This label certifies that every component of the product, from the fabric to the thread and accessories, has been rigorously tested against a list of up to 350 toxic chemicals.

Special treatment: Aquaclean (Easy cleaning with water)

Water Washable (by Hand) OK



TBE

Composition

polyester 100%

A three-dimensional jacquard fabric with a geometric pattern that combines triangles. Elastic threads are arranged in the ventilation (double weave) structure to create a natural wrinkled feel.

Dry Clean OK

Water Washable (by Hand) OK



TYE

Composition

polyester 100%

A three-dimensional jacquard fabric with a geometric pattern that combines triangles. Elastic threads are arranged in the ventilation (double weave) structure to create a natural wrinkled feel.

Dry Clean OK

Water Washable (by Hand) OK



TGR

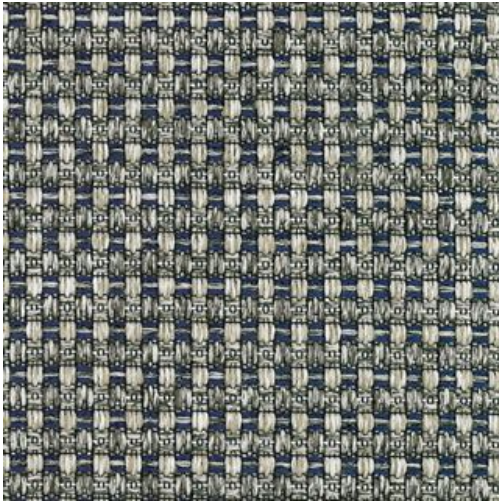
Composition

polyester 100%

A three-dimensional jacquard fabric with a geometric pattern that combines triangles. Elastic threads are arranged in the ventilation (double weave) structure to create a natural wrinkled feel.

Dry Clean OK

Water Washable (by Hand) OK



HUNV

Composition
polyester 100%
An attractive fabric with mixed threads that creates rough volume.

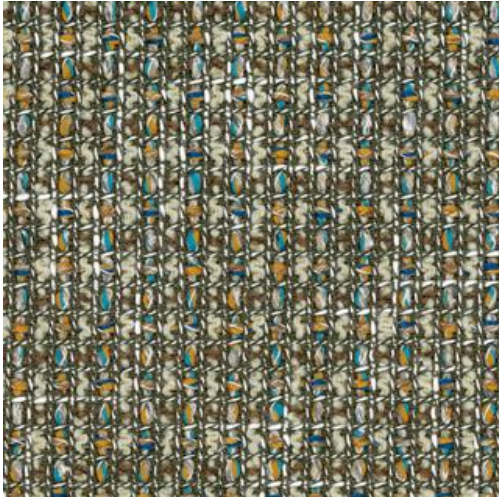
Dry Clean OK



HUGR

Composition
polyester 100%
An attractive fabric with mixed threads that creates rough volume.

Dry Clean OK



HMBE

Composition
polyester 100%
An attractive fabric with mixed threads that creates rough volume.

Dry Clean OK



HMGR

Composition
polyester 100%
An attractive fabric with mixed threads that creates rough volume.

Dry Clean OK



MMBE

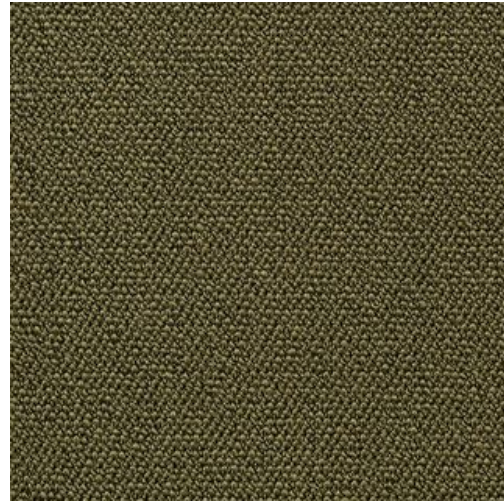
Composition

acrylic 74%, polyester 26%

Mimosa is a luxurious fabric characterized by its deep hues and woven look. It is made of Q2, a stain-resistant material (Rohleder GmbH, Germany), which is easy to clean and maintain. This fabric has excellent maintainability, as dirt does not easily soak into the fibers and is easy to clean.

Dry Clean OK

Water Washable (by Hand) OK



MMG

Composition

acrylic 74%, polyester 26%

Mimosa is a luxurious fabric characterized by its deep hues and woven look. It is made of Q2, a stain-resistant material (Rohleder GmbH, Germany), which is easy to clean and maintain. This fabric has excellent maintainability, as dirt does not easily soak into the fibers and is easy to clean.

Dry Clean OK

Water Washable (by Hand) OK



MMYE

Composition

acrylic 74%, polyester 26%

Mimosa is a luxurious fabric characterized by its deep hues and woven look. It is made of Q2, a stain-resistant material (Rohleder GmbH, Germany), which is easy to clean and maintain. This fabric has excellent maintainability, as dirt does not easily soak into the fibers and is easy to clean.

Dry Clean OK

Water Washable (by Hand) OK

LEATHER B GENUINE LEATHER



NEW SMOOTH611

Genuine leather with the original feel and texture of leather. The expression of natural leather is utilized without any processing such as embossing.



NEW SMOOTH687

Genuine leather with the original feel and texture of leather. The expression of natural leather is utilized without any processing such as embossing.



NEW SMOOTH673

Genuine leather with the original feel and texture of leather. The expression of natural leather is utilized without any processing such as embossing.



NEW SMOOTH672

Genuine leather with the original feel and texture of leather. The expression of natural leather is utilized without any processing such as embossing.



NEW SMOOTH635

Genuine leather with the original feel and texture of leather. The expression of natural leather is utilized without any processing such as embossing.



NEW SMOOTH636

Genuine leather with the original feel and texture of leather. The expression of natural leather is utilized without any processing such as embossing.



NEW SMOOTH685

Genuine leather with the original feel and texture of leather. The expression of natural leather is utilized without any processing such as embossing.



NEW SMOOTH613

Genuine leather with the original feel and texture of leather. The expression of natural leather is utilized without any processing such as embossing.