

## RANK B



**SROR**

**Composition**  
polyester 100%  
It is a fabric with an elegant sheen and a soft touch.

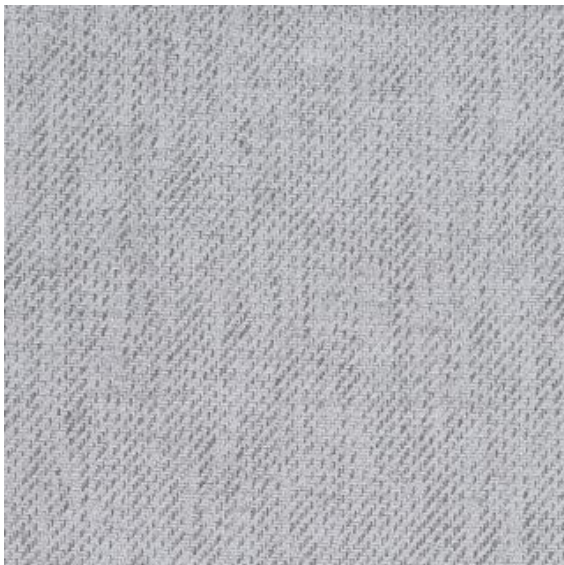
**Dry Clean OK**  
**Water Washable (by Hand) OK**



**SRBR**

**Composition**  
polyester 100%  
It is a fabric with an elegant sheen and a soft touch.

**Dry Clean OK**  
**Water Washable (by Hand) OK**



**SRLG**

**Composition**  
polyester 100%  
It is a fabric with an elegant sheen and a soft touch.

**Dry Clean OK**  
**Water Washable (by Hand) OK**

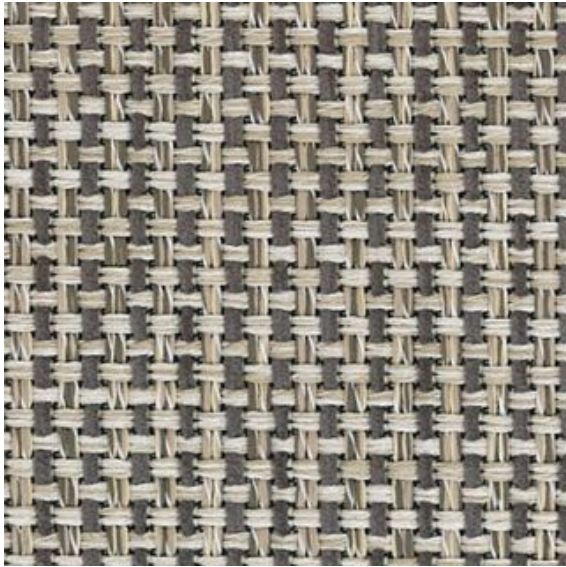


**SRDR**

**Composition**  
polyester 100%  
It is a fabric with an elegant sheen and a soft touch.

**Dry Clean OK**  
**Water Washable (by Hand) OK**





SA95

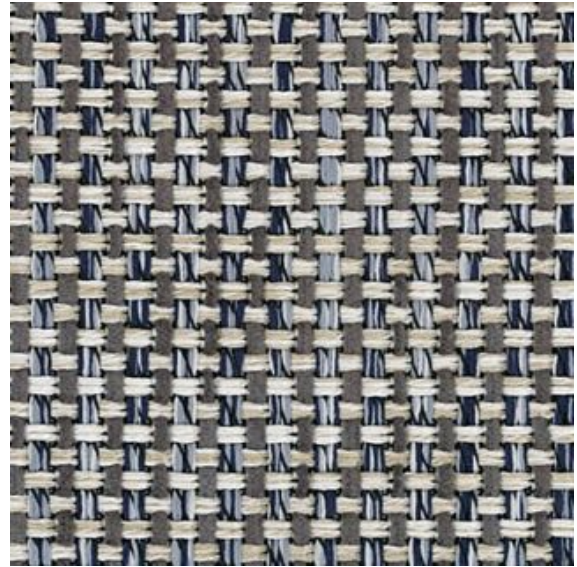
**Composition**

polyester 100%

The natural texture is expressed by mixing the soft feel mall thread and the exquisitely different colored threads.

Dry Clean OK

Water Washable (by Hand) OK



SA98

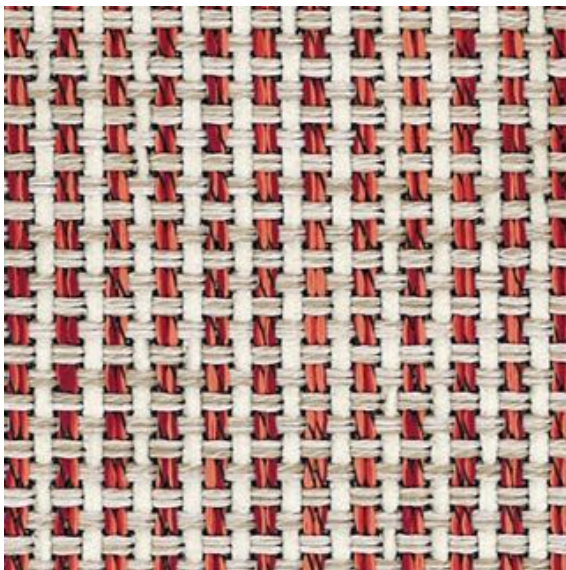
**Composition**

polyester 100%

The natural texture is expressed by mixing the soft feel mall thread and the exquisitely different colored threads.

Dry Clean OK

Water Washable (by Hand) OK



SA15

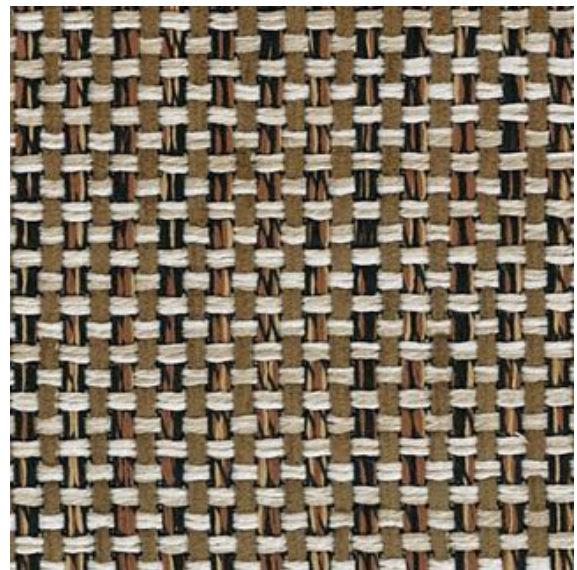
**Composition**

polyester 100%

The natural texture is expressed by mixing the soft feel mall thread and the exquisitely different colored threads.

Dry Clean OK

Water Washable (by Hand) OK



SA85

**Composition**

polyester 100%

The natural texture is expressed by mixing the soft feel mall thread and the exquisitely different colored threads.

Dry Clean OK

Water Washable (by Hand) OK





**SPLG**

**Composition**

polyester 100%

The soft texture that envelops you softly, and the exquisitely mixed weave in a plain atmosphere is attractive.

Dry Clean OK

Water Washable (by Hand) OK



**SIV**

**Composition**

polyester 100%

It is a fabric with a cute expression with a small dot pattern.

Dry Clean OK

Water Washable (by Hand) OK



**SBE**

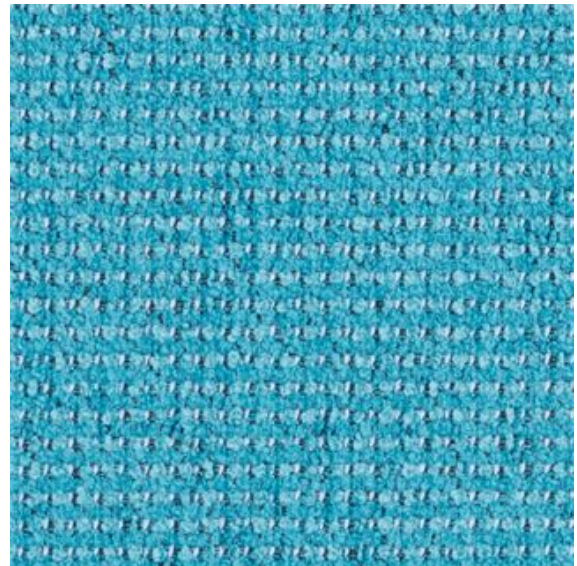
**Composition**

polyester 100%

It is a fabric with a cute expression with a small dot pattern.

Dry Clean OK

Water Washable (by Hand) OK



**SLBU**

**Composition**

polyester 100%

It is a fabric with a cute expression with a small dot pattern.

Dry Clean OK

Water Washable (by Hand) OK





**SBU**

**Composition**

polyester 100%

It is a fabric with a cute expression with a small dot pattern.

Dry Clean OK

Water Washable (by Hand) OK



**SPU**

**Composition**

polyester 100%

It is a fabric with a cute expression with a small dot pattern.

Dry Clean OK

Water Washable (by Hand) OK



**SDBR**

**Composition**

polyester 100%

It is a fabric with a cute expression with a small dot pattern.

Dry Clean OK

Water Washable (by Hand) OK



**DCRE**

**Composition**

polyester 81%, cotton 12%, acrylic 7%

The fabric has been treated to be stain-resistant, making it difficult for stains to stick and easy to remove. Recommended for families with pets and children.

Dry Clean OK

Water Washable (by Hand) OK

Water-repellent

Resistant to scratches





**DCYG**

**Composition**

polyester 81%, cotton 12%, acrylic 7%

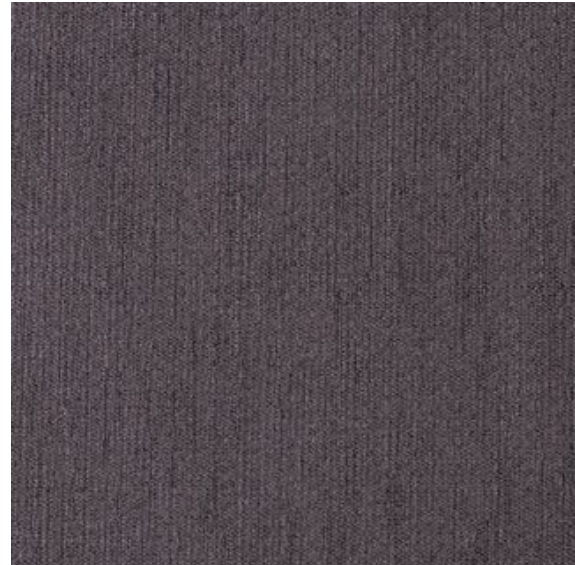
The fabric has been treated to be stain-resistant, making it difficult for stains to stick and easy to remove. Recommended for families with pets and children.

Dry Clean OK

Water Washable (by Hand) OK

Water-repellent

Resistant to scratches



**DCPU**

**Composition**

polyester 81%, cotton 12%, acrylic 7%

The fabric has been treated to be stain-resistant, making it difficult for stains to stick and easy to remove. Recommended for families with pets and children.

Dry Clean OK

Water Washable (by Hand) OK

Water-repellent

Resistant to scratches



**DCBR**

**Composition**

polyester 81%, cotton 12%, acrylic 7%

The fabric has been treated to be stain-resistant, making it difficult for stains to stick and easy to remove. Recommended for families with pets and children.

Dry Clean OK

Water Washable (by Hand) OK

Water-repellent

Resistant to scratches



**DCB**

**Composition**

polyester 81%, cotton 12%, acrylic 7%

The fabric has been treated to be stain-resistant, making it difficult for stains to stick and easy to remove. Recommended for families with pets and children.

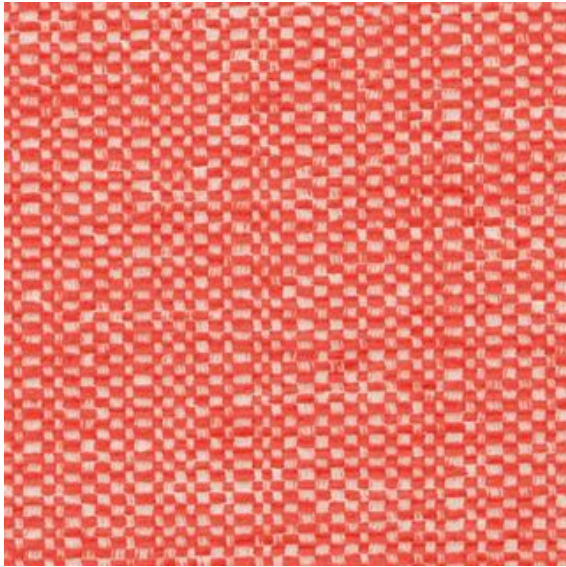
Dry Clean OK

Water Washable (by Hand) OK

Water-repellent

Resistant to scratches





**PHRE**

**Composition**  
polyester 100%  
It is a fabric with attractive colors and rich color variations.

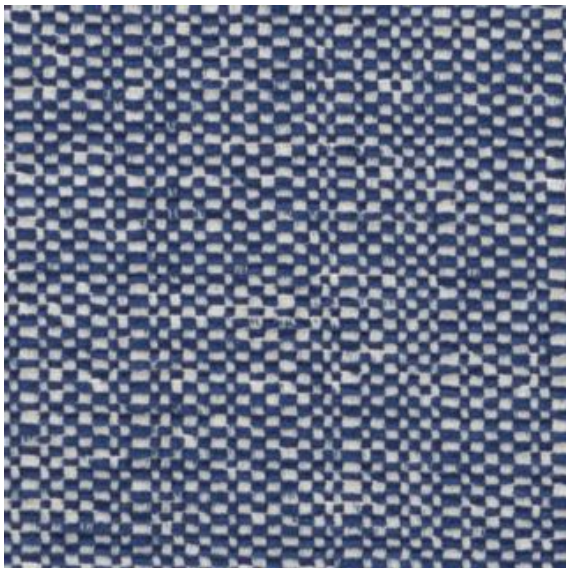
**Dry Clean OK**  
**Water Washable (by Hand) OK**



**PHYE**

**Composition**  
polyester 100%  
It is a fabric with attractive colors and rich color variations.

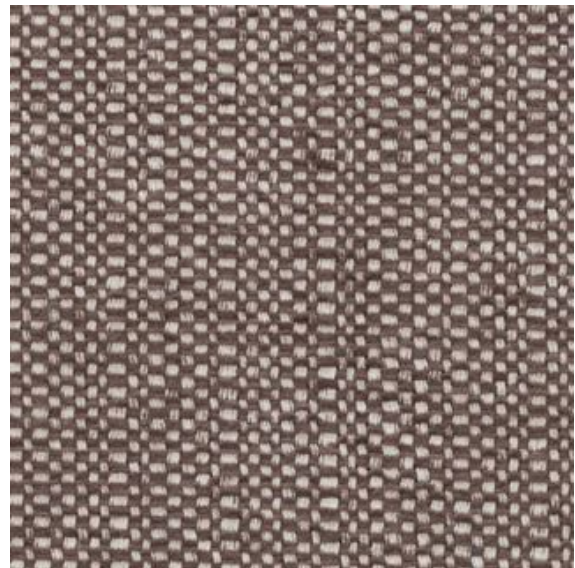
**Dry Clean OK**  
**Water Washable (by Hand) OK**



**PHBU**

**Composition**  
polyester 100%  
It is a fabric with attractive colors and rich color variations.

**Dry Clean OK**  
**Water Washable (by Hand) OK**

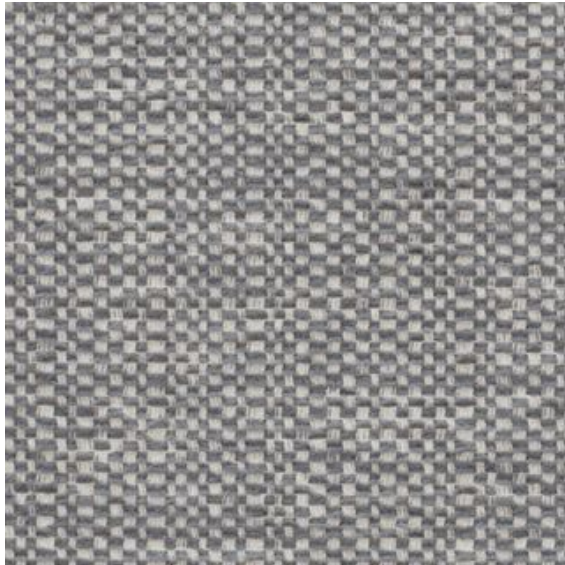


**PHDR**

**Composition**  
polyester 100%  
It is a fabric with attractive colors and rich color variations.

**Dry Clean OK**  
**Water Washable (by Hand) OK**

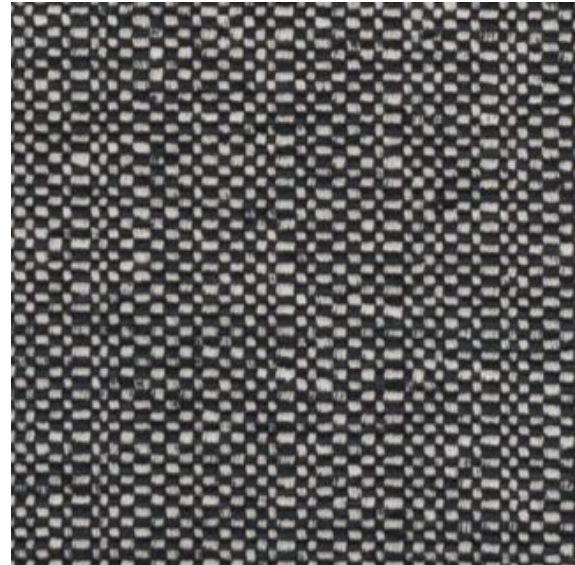




**PHGR**

**Composition**  
polyester 100%  
It is a fabric with attractive colors and rich color variations.

**Dry Clean OK**  
**Water Washable (by Hand) OK**



**PHB**

**Composition**  
polyester 100%  
It is a fabric with attractive colors and rich color variations.

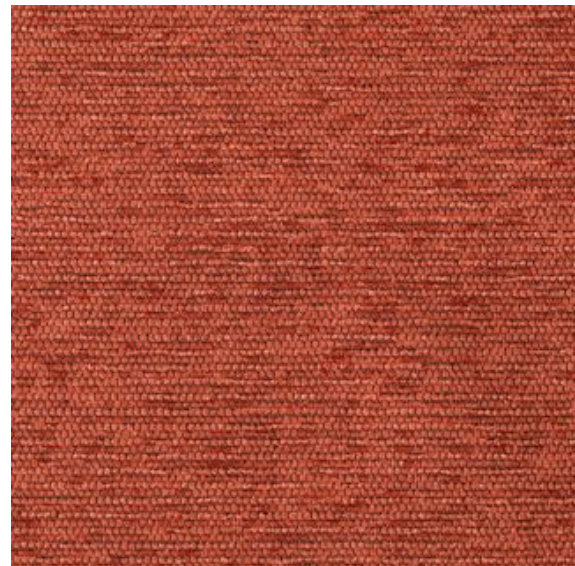
**Dry Clean OK**  
**Water Washable (by Hand) OK**



**MIBE**

**Composition**  
polyester 100%  
The fabric has been treated to be stain-resistant, making it difficult for stains to stick and easy to remove. Recommended for families with pets and children.

**Dry Clean OK**  
**Water Washable (by Hand) OK**  
**Resistant to Scratch**  
**Silver ( $\mu$ -func®): antibacterial, deodorant, and antistatic effects**

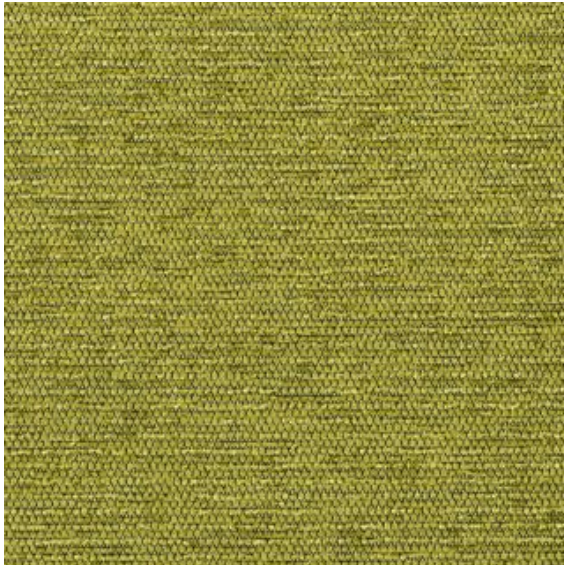


**MIRE**

**Composition**  
polyester 100%  
The fabric has been treated to be stain-resistant, making it difficult for stains to stick and easy to remove. Recommended for families with pets and children.

**Dry Clean OK**  
**Water Washable (by Hand) OK**  
**Resistant to Scratch**  
**Silver ( $\mu$ -func®): antibacterial, deodorant, and antistatic effects**





MIG

**Composition**

polyester 100%

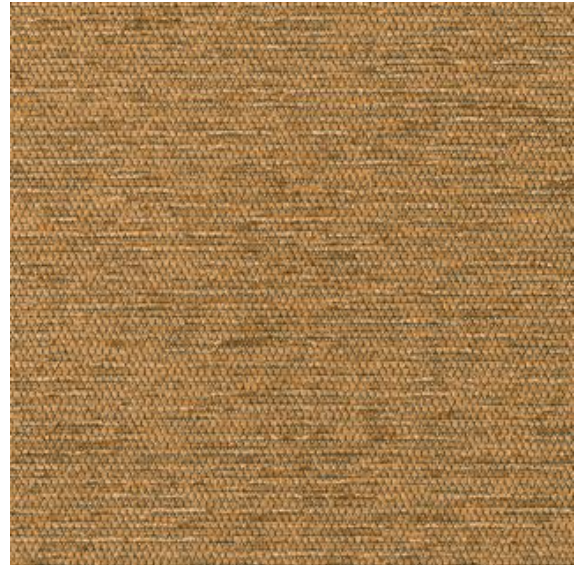
The fabric has been treated to be stain-resistant, making it difficult for stains to stick and easy to remove. Recommended for families with pets and children.

Dry Clean OK

Water Washable (by Hand) OK

Resistant to Scratch

Silver ( $\mu$ -func®): antibacterial, deodorant, and antistatic effects



MIBR

**Composition**

polyester 100%

The fabric has been treated to be stain-resistant, making it difficult for stains to stick and easy to remove. Recommended for families with pets and children.

Dry Clean OK

Water Washable (by Hand) OK

Resistant to Scratch

Silver ( $\mu$ -func®): antibacterial, deodorant, and antistatic effects



RCBE

**Composition**

polyester 100%

The fabric has been treated to be stain-resistant, making it difficult for stains to stick and easy to remove. Recommended for families with pets and children.

Dry Clean OK

Water Washable (by Hand) OK

Silver ( $\mu$ -func®): antibacterial, deodorant, and antistatic effects



RCOR

**Composition**

polyester 100%

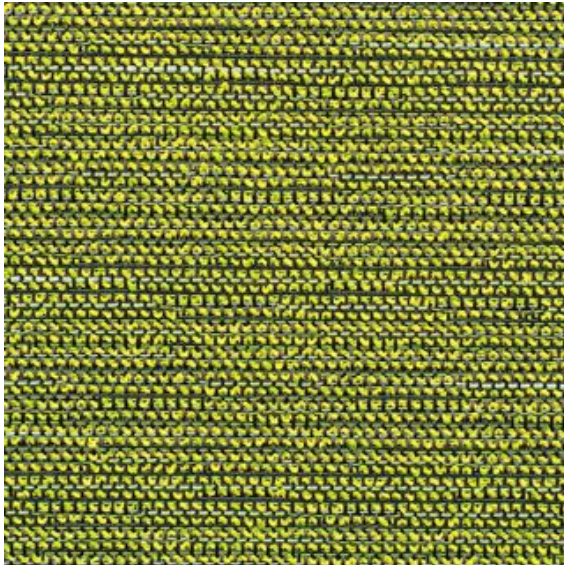
The fabric has been treated to be stain-resistant, making it difficult for stains to stick and easy to remove. Recommended for families with pets and children.

Dry Clean OK

Water Washable (by Hand) OK

Silver ( $\mu$ -func®): antibacterial, deodorant, and antistatic effects





**RCYG**

**Composition**

polyester 100%

The antibacterial, deodorizing, and antistatic effects of silver thread ( $\mu$ -func®) last semipermanently, making it a safe and human-friendly fiber.

Dry Clean OK

Water Washable (by Hand) OK

Silver ( $\mu$ -func®): antibacterial, deodorant, and antistatic effects



**RCPU**

**Composition**

polyester 100%

The antibacterial, deodorizing, and antistatic effects of silver thread ( $\mu$ -func®) last semipermanently, making it a safe and human-friendly fiber.

Dry Clean OK

Water Washable (by Hand) OK

Silver ( $\mu$ -func®): antibacterial, deodorant, and antistatic effects



**RCBR**

**Composition**

polyester 100%

The antibacterial, deodorizing, and antistatic effects of silver thread ( $\mu$ -func®) last semipermanently, making it a safe and human-friendly fiber.

Dry Clean OK

Water Washable (by Hand) OK

Silver ( $\mu$ -func®): antibacterial, deodorant, and antistatic effects



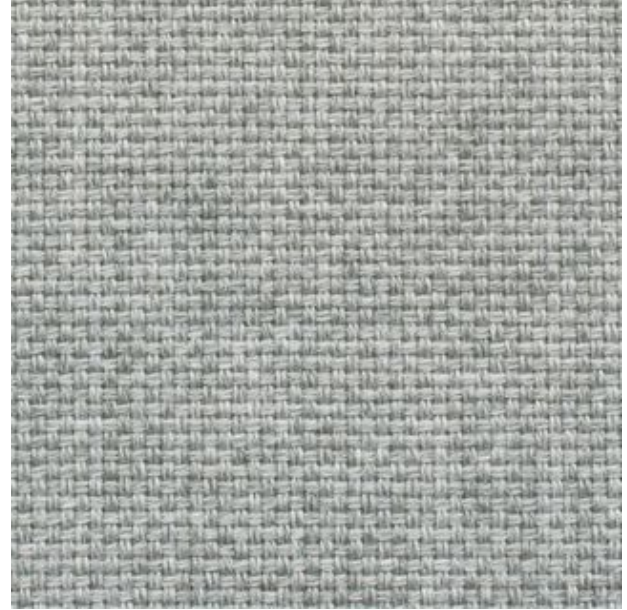
## RANK B DRY CLEAN



GRGR

**Composition**  
cotton 59.5%, rayon 36.5%, acrylic 4%  
With a rough texture, the gradation-dyed warp threads create a beautiful kasuri pattern.

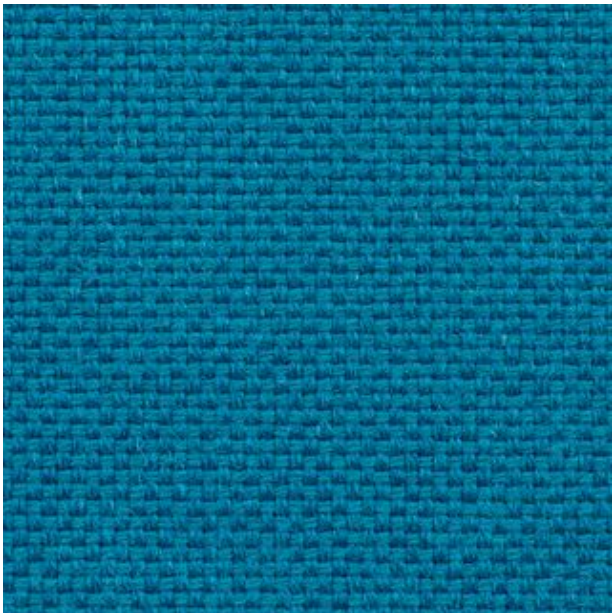
Dry Clean OK



PTGY

**Composition**  
acrylic 70%, wool 30%  
A durable fabric with good color development and resistance to wear and tear.

Dry Clean OK



PTLB

**Composition**  
acrylic 70%, wool 30%  
A durable fabric with good color development and resistance to wear and tear.

Dry Clean OK



PTDR

**Composition**  
acrylic 70%, wool 30%  
A durable fabric with good color development and resistance to wear and tear.

Dry Clean OK

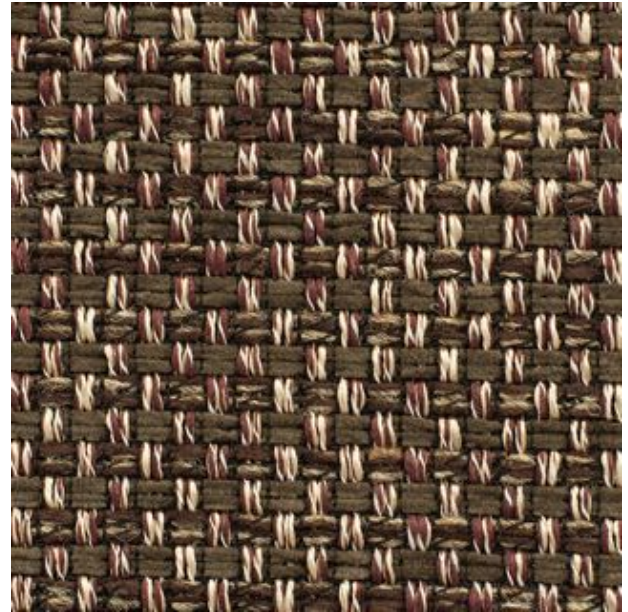




CRNV

**Composition**  
polyester 90%, rayon 8%, wool1%, acrylic 1%  
It is an elegant cloth that expresses the depth of color by combining lustrous yarn and top yarn with a rough texture of Nanako.

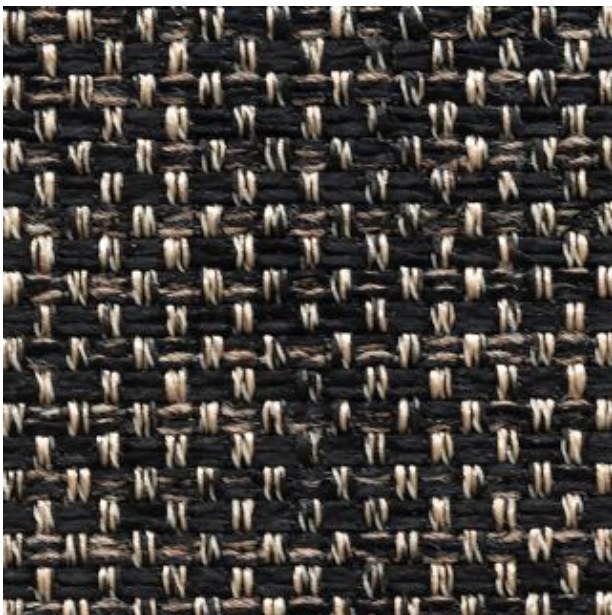
Dry Clean OK



CRBR

**Composition**  
polyester 90%, rayon 8%, wool1%, acrylic 1%  
It is an elegant cloth that expresses the depth of color by combining lustrous yarn and top yarn with a rough texture of Nanako.

Dry Clean OK



CRB

**Composition**  
polyester 90%, rayon 8%, wool1%, acrylic 1%  
It is an elegant cloth that expresses the depth of color by combining lustrous yarn and top yarn with a rough texture of Nanako.

Dry Clean OK



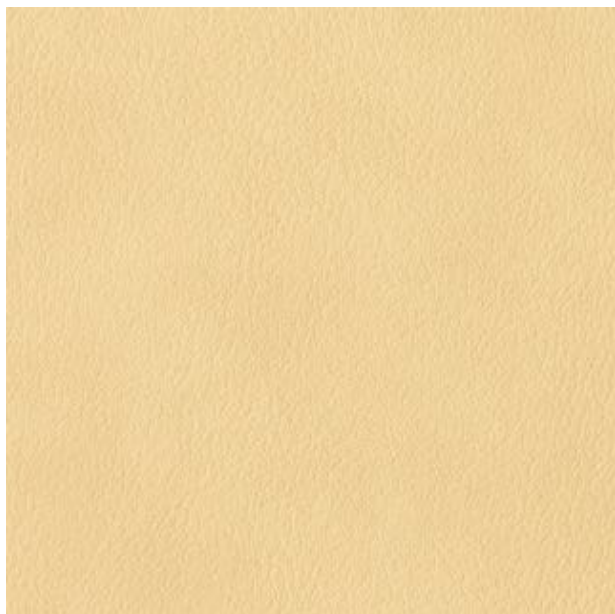
CRBE

**Composition**  
polyester 90%, rayon 8%, wool1%, acrylic 1%  
It is an elegant cloth that expresses the depth of color by combining lustrous yarn and top yarn with a rough texture of Nanako.

Dry Clean OK

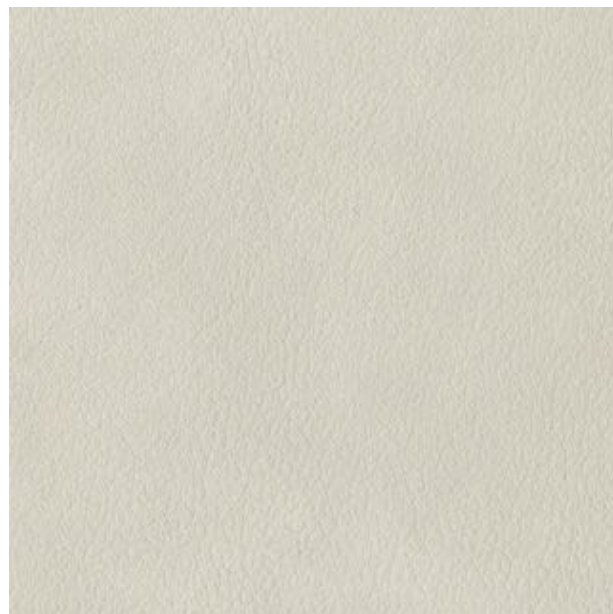


## **RANK B SYNTHETIC LEATHER**



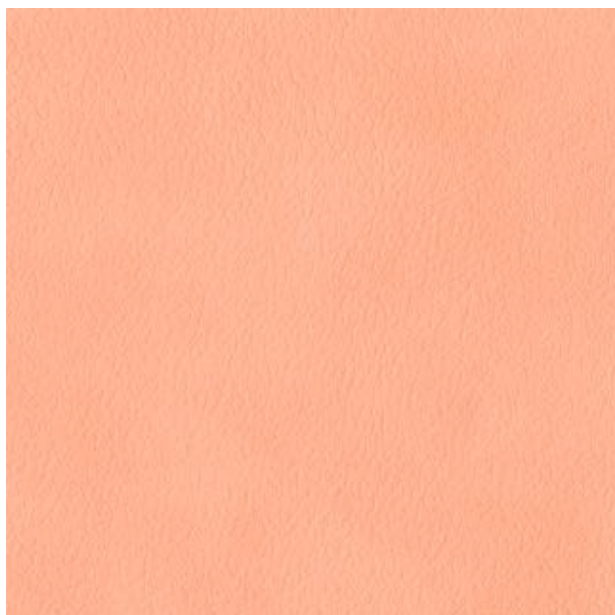
**HILBE**

**Synthetic Leather with a soft texture and a familiar color to the wood. Excellent durability and functionality.**



**HILGR**

**Synthetic Leather with a soft texture and a familiar color to the wood. Excellent durability and functionality.**



**HIP**

**Synthetic Leather with a soft texture and a familiar color to the wood. Excellent durability and functionality.**



**HILBU**

**Synthetic Leather with a soft texture and a familiar color to the wood. Excellent durability and functionality.**





**HIBU**

**Synthetic Leather with a soft texture and a familiar color to the wood. Excellent durability and functionality.**



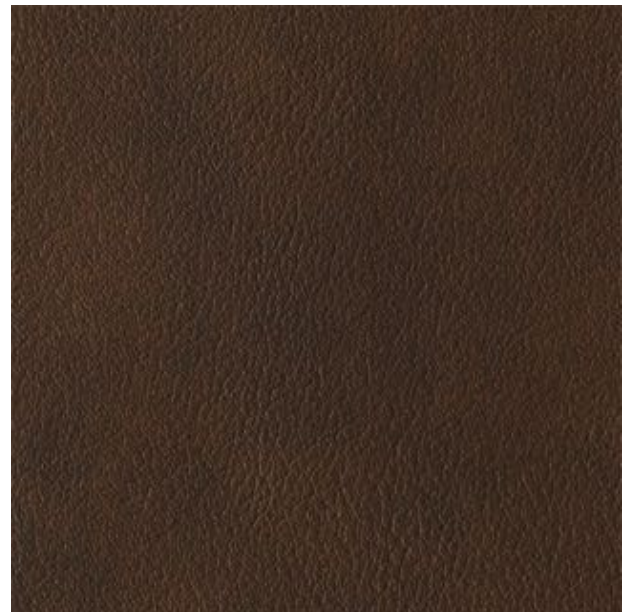
**HICA**

**Synthetic Leather with a soft texture and a familiar color to the wood. Excellent durability and functionality.**



**HIBR**

**Synthetic Leather with a soft texture and a familiar color to the wood. Excellent durability and functionality.**



**HIDBR**

**Synthetic Leather with a soft texture and a familiar color to the wood. Excellent durability and functionality.**





**HIB**

**Synthetic Leather with a soft texture and a familiar color to the wood. Excellent durability and functionality.**



## RANK C

### Highly functional fabric.



GCLGR

**Composition**  
polyester 100%  
Embossed like leather, it is a fabric that exudes the dignity of genuine leather.

Dry Clean OK  
Water Washable (by Hand) OK  
Resistant to Scratch



GCGR

**Composition**  
polyester 100%  
Embossed like leather, it is a fabric that exudes the dignity of genuine leather.

Dry Clean OK  
Water Washable (by Hand) OK  
Resistant to Scratch



GCBR

**Composition**  
polyester 100%  
Embossed like leather, it is a fabric that exudes the dignity of genuine leather.

Dry Clean OK  
Water Washable (by Hand) OK  
Resistant to Scratch



SP10

**Composition**  
polyester 100%  
AquaClean: An invisible molecular film prevents dirt from penetrating into the fibers. The fabric is easy to maintain.  
Oeko-Tex® Standard 100: Oeko-Tex® Standard 100 is one of the world's best-known labels for textiles tested for harmful substances. This label certifies that every component of the product, from the fabric to the thread and accessories, has been rigorously tested against a list of up to 350 toxic chemicals.

Dry Clean OK  
Water Washable (by Hand) OK  
Special treatment: AquaClean (Easy cleaning with water)





SP19

**Composition**  
 polyester 100%  
**Aquaclean:** An invisible molecular film prevents dirt from penetrating into the fibers. The fabric is easy to maintain.  
**Oeko-Tex® Standard 100:** Oeko-Tex® Standard 100 is one of the world's best-known labels for textiles tested for harmful substances. This label certifies that every component of the product, from the fabric to the thread and accessories, has been rigorously tested against a list of up to 350 toxic chemicals.

**Dry Clean OK**  
**Water Washable (by Hand) OK**  
**Special treatment:** Aquaclean (Easy cleaning with water)



SP08

**Composition**  
 polyester 100%  
**Aquaclean:** An invisible molecular film prevents dirt from penetrating into the fibers. The fabric is easy to maintain.  
**Oeko-Tex® Standard 100:** Oeko-Tex® Standard 100 is one of the world's best-known labels for textiles tested for harmful substances. This label certifies that every component of the product, from the fabric to the thread and accessories, has been rigorously tested against a list of up to 350 toxic chemicals.

**Dry Clean OK**  
**Water Washable (by Hand) OK**  
**Special treatment:** Aquaclean (Easy cleaning with water)



SP13

**Composition**  
 polyester 100%  
**Aquaclean:** An invisible molecular film prevents dirt from penetrating into the fibers. The fabric is easy to maintain.  
**Oeko-Tex® Standard 100:** Oeko-Tex® Standard 100 is one of the world's best-known labels for textiles tested for harmful substances. This label certifies that every component of the product, from the fabric to the thread and accessories, has been rigorously tested against a list of up to 350 toxic chemicals.

**Dry Clean OK**  
**Water Washable (by Hand) OK**  
**Special treatment:** Aquaclean (Easy cleaning with water)



SP17

**Composition**  
 polyester 100%  
**Aquaclean:** An invisible molecular film prevents dirt from penetrating into the fibers. The fabric is easy to maintain.  
**Oeko-Tex® Standard 100:** Oeko-Tex® Standard 100 is one of the world's best-known labels for textiles tested for harmful substances. This label certifies that every component of the product, from the fabric to the thread and accessories, has been rigorously tested against a list of up to 350 toxic chemicals.

**Dry Clean OK**  
**Water Washable (by Hand) OK**  
**Special treatment:** Aquaclean (Easy cleaning with water)

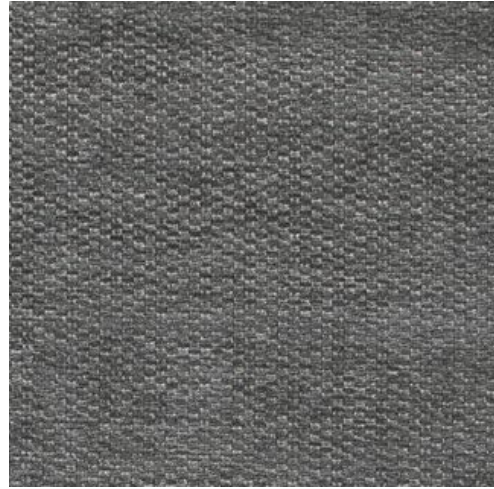




**DLLG**

**Composition**  
polyester 75%, rayon 25%  
A fabric with a soft, soft touch and an elegant sheen that is unique to rayon malls.

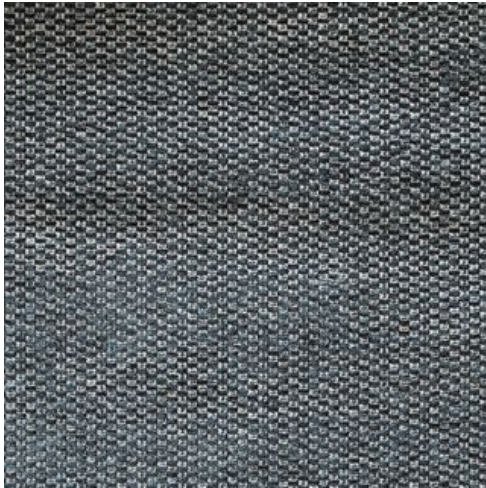
Dry Clean OK



**DLGR**

**Composition**  
polyester 75%, rayon 25%  
A fabric with a soft, soft touch and an elegant sheen that is unique to rayon malls.

Dry Clean OK



**DLDB**

**Composition**  
polyester 75%, rayon 25%  
A fabric with a soft, soft touch and an elegant sheen that is unique to rayon malls.

Dry Clean OK



**NADB**

**Composition**  
polyester 100%  
You can also coordinate with fabric KTBU/KTDG.

Dry Clean OK  
Water Washable (by Hand) OK





**NADG**

**Composition**  
polyester 100%  
You can also coordinate with fabric KTBU/KTDG.

**Dry Clean OK**  
**Water Washable (by Hand) OK**



**BMBU**

**Composition**  
polyester 100%  
It is an attractive fabric with a mixed weave. It has a voluminous feel and a good tension, and is recommended for sofas with large areas.

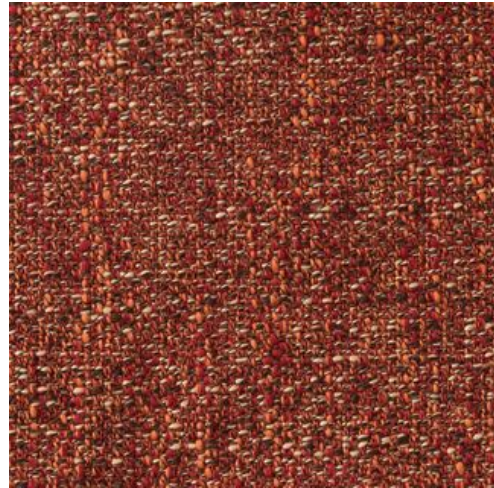
**Dry Clean OK**  
**Water Washable (by Hand) OK**



**BMG**

**Composition**  
polyester 100%  
It is an attractive fabric with a mixed weave. It has a voluminous feel and a good tension, and is recommended for sofas with large areas.

**Dry Clean OK**  
**Water Washable (by Hand) OK**



**BGRE**

**Composition**  
polyester 100%  
It is an attractive fabric with a mixed weave. It has a voluminous feel and a good tension, and is recommended for sofas with large areas.

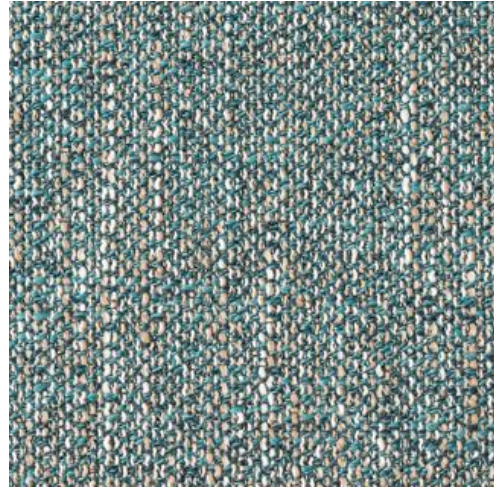
**Dry Clean OK**  
**Water Washable (by Hand) OK**



**BGGR**

**Composition**  
polyester 100%  
It is an attractive fabric with a mixed weave. It has a voluminous feel and a good tension, and is recommended for sofas with large areas.

**Dry Clean OK**  
**Water Washable (by Hand) OK**



**BGG**

**Composition**  
polyester 100%  
It is an attractive fabric with a mixed weave. It has a voluminous feel and a good tension, and is recommended for sofas with large areas.

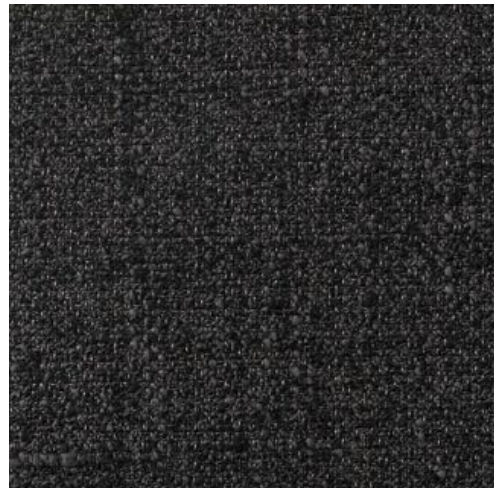
**Dry Clean OK**  
**Water Washable (by Hand) OK**



**BGDG**

**Composition**  
polyester 100%  
It is an attractive fabric with a mixed weave. It has a voluminous feel and a good tension, and is recommended for sofas with large areas.

**Dry Clean OK**  
**Water Washable (by Hand) OK**

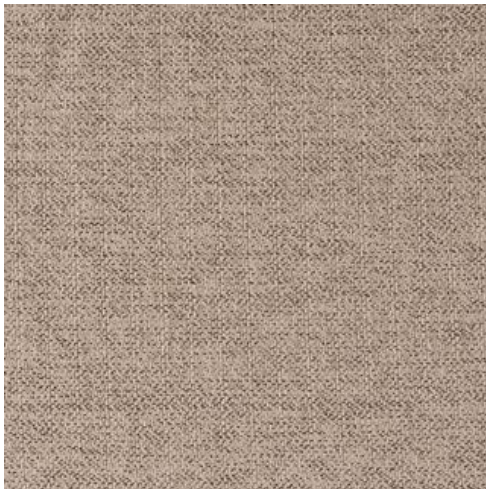


**BGB**

**Composition**  
polyester 100%  
It is an attractive fabric with a mixed weave. It has a voluminous feel and a good tension, and is recommended for sofas with large areas.

**Dry Clean OK**  
**Water Washable (by Hand) OK**





LSBE

**Composition**  
polyester 100%  
Golden threads are used for the warp threads,  
making it a gorgeous fabric that is soft to the  
touch.

**Dry Clean OK**  
**Water Washable (by Hand) OK**  
Silver (μ-func®): antibacterial, deodorant, and  
antistatic effects



LSG

**Composition**  
polyester 100%  
Golden threads are used for the warp threads,  
making it a gorgeous fabric that is soft to the  
touch.

**Dry Clean OK**  
**Water Washable (by Hand) OK**  
Silver (μ-func®): antibacterial, deodorant, and  
antistatic effects



LSPU

**Composition**  
polyester 100%  
Golden threads are used for the warp threads,  
making it a gorgeous fabric that is soft to the  
touch.

**Dry Clean OK**  
**Water Washable (by Hand) OK**  
Silver (μ-func®): antibacterial, deodorant, and  
antistatic effects

## RANK E

**Fabric with great texture and an attractive expression.**

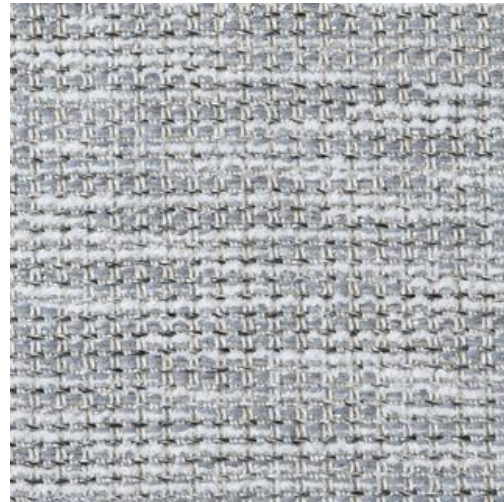


ALBE

**Composition**  
polyester 100%

An attractive fabric with a deep expression that is woven by twisting threads with different textures, thicknesses, and colors. The fabric is thick and has a luxurious finish.

Dry Clean OK  
Water Washable (by Hand) OK



ALLG

**Composition**  
polyester 100%

An attractive fabric with a deep expression that is woven by twisting threads with different textures, thicknesses, and colors. The fabric is thick and has a luxurious finish.

Dry Clean OK  
Water Washable (by Hand) OK



ALDB

**Composition**  
polyester 100%

An attractive fabric with a deep expression that is woven by twisting threads with different textures, thicknesses, and colors. The fabric is thick and has a luxurious finish.

Dry Clean OK  
Water Washable (by Hand) OK



KTBU

**Composition**  
polyester 100%

In commemoration of the development of the No. 7 chair, this fabric was created by a dyeing artisan, Samiro Yunoki. The position of the pattern cannot be specified. You can also coordinate it with fabric NADB/NADG.

Dry Clean OK  
Water Washable (by Hand) OK



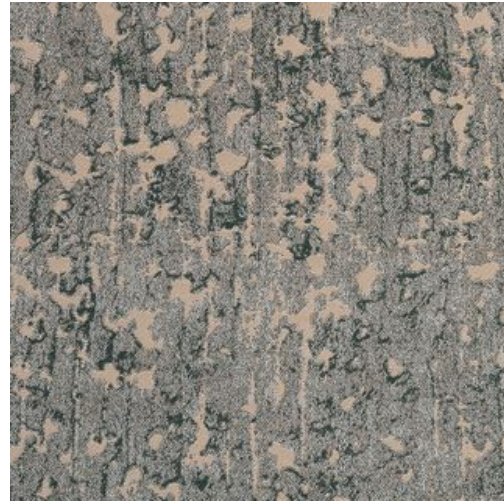


**KTDG**

**Composition**  
polyester 100%

In commemoration of the development of the No. 7 chair, this fabric was created by a dyeing artisan, Samiro Yunoki. The position of the pattern cannot be specified. You can also coordinate it with fabric NADB/NADG.

Dry Clean OK  
Water Washable (by Hand) OK



**KMBE**

**Composition**  
polyester 100%

The fabric was designed by artist Kaoru Iga of the art brand HERALBONY. The brand is expanding its involvement with welfare with new ideas. This high-quality upholstery fabric is produced in Bishu (western Aichi Prefecture), one of Japan's leading textile production areas.

Dry Clean OK  
Water Washable (by Hand) OK

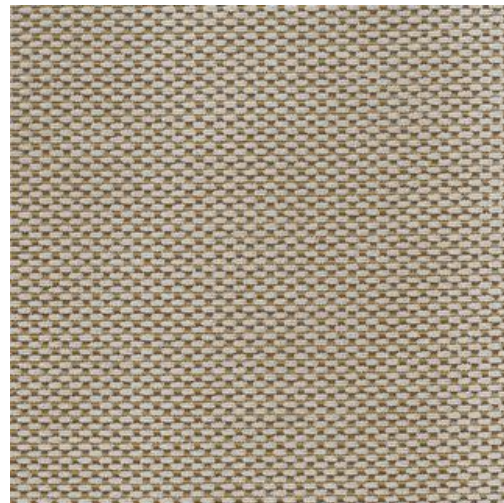


**KMG**

**Composition**  
polyester 100%

The fabric was designed by artist Kaoru Iga of the art brand HERALBONY. The brand is expanding its involvement with welfare with new ideas. This high-quality upholstery fabric is produced in Bishu (western Aichi Prefecture), one of Japan's leading textile production areas.

Dry Clean OK  
Water Washable (by Hand) OK



**JPBE**

**Composition**  
polyester 95%, nylon 5%

High quality softness with a smooth feel. The luxurious use of Samiamol, which uses ultra-fine fibers that are 1/15th the thickness of a human hair, creates a texture that makes you want to rub your cheeks.

Dry Clean OK  
Water Washable (by Hand) OK



JPDB

**Composition**  
polyester 95%, nylon 5%  
High quality softness with a smooth feel. The luxurious use of Samiamol, which uses ultra-fine fibers that are 1/15th the thickness of a human hair, creates a texture that makes you want to rub your cheeks.

Dry Clean OK  
Water Washable (by Hand) OK



TSBE

**Composition**  
polyester 73%, recycled cotton 27%  
AquaClean: An invisible molecular film prevents dirt from penetrating into the fibers. The fabric is easy to maintain.  
Oeko-Tex® Standard 100: Oeko-Tex® Standard 100 is one of the world's best-known labels for textiles tested for harmful substances. This label certifies that every component of the product, from the fabric to the thread and accessories, has been rigorously tested against a list of up to 350 toxic chemicals.

Special treatment: AquaClean (Easy cleaning with water)  
Dry Clean OK



TSBR

**Composition**  
polyester 73%, recycled cotton 27%  
AquaClean: An invisible molecular film prevents dirt from penetrating into the fibers. The fabric is easy to maintain.  
Oeko-Tex® Standard 100: Oeko-Tex® Standard 100 is one of the world's best-known labels for textiles tested for harmful substances. This label certifies that every component of the product, from the fabric to the thread and accessories, has been rigorously tested against a list of up to 350 toxic chemicals.

Special treatment: AquaClean (Easy cleaning with water)  
Dry Clean OK



TSLGR

**Composition**  
polyester 73%, recycled cotton 27%  
AquaClean: An invisible molecular film prevents dirt from penetrating into the fibers. The fabric is easy to maintain.  
Oeko-Tex® Standard 100: Oeko-Tex® Standard 100 is one of the world's best-known labels for textiles tested for harmful substances. This label certifies that every component of the product, from the fabric to the thread and accessories, has been rigorously tested against a list of up to 350 toxic chemicals.

Special treatment: AquaClean (Easy cleaning with water)  
Dry Clean OK





TSB

**Composition**

polyester 73%, recycled cotton 27%

**Aquaclean:** An invisible molecular film prevents dirt from penetrating into the fibers. The fabric is easy to maintain.

**Oeko-Tex® Standard 100:** Oeko-Tex® Standard 100 is one of the world's best-known labels for textiles tested for harmful substances. This label certifies that every component of the product, from the fabric to the thread and accessories, has been rigorously tested against a list of up to 350 toxic chemicals.

**Special treatment:** Aquaclean (Easy cleaning with water)

Water Washable (by Hand) OK



TBE

**Composition**

polyester 100%

A three-dimensional jacquard fabric with a geometric pattern that combines triangles. Elastic threads are arranged in the ventilation (double weave) structure to create a natural wrinkled feel.

Dry Clean OK

Water Washable (by Hand) OK



TYE

**Composition**

polyester 100%

A three-dimensional jacquard fabric with a geometric pattern that combines triangles. Elastic threads are arranged in the ventilation (double weave) structure to create a natural wrinkled feel.

Dry Clean OK

Water Washable (by Hand) OK



TGR

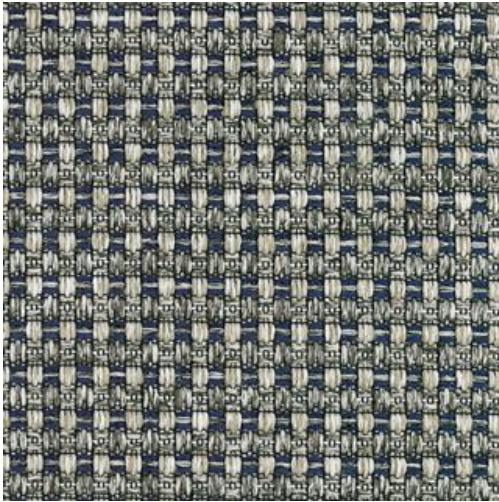
**Composition**

polyester 100%

A three-dimensional jacquard fabric with a geometric pattern that combines triangles. Elastic threads are arranged in the ventilation (double weave) structure to create a natural wrinkled feel.

Dry Clean OK

Water Washable (by Hand) OK



HUNV

**Composition**  
polyester 100%  
An attractive fabric with mixed threads that creates rough volume.

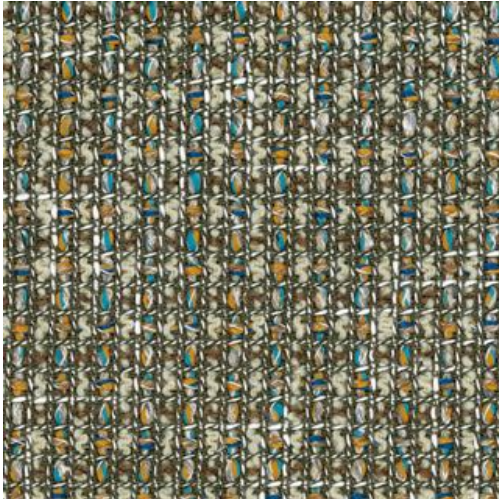
Dry Clean OK



HUGR

**Composition**  
polyester 100%  
An attractive fabric with mixed threads that creates rough volume.

Dry Clean OK



HMBE

**Composition**  
polyester 100%  
An attractive fabric with mixed threads that creates rough volume.

Dry Clean OK



HMGR

**Composition**  
polyester 100%  
An attractive fabric with mixed threads that creates rough volume.

Dry Clean OK





MMBE

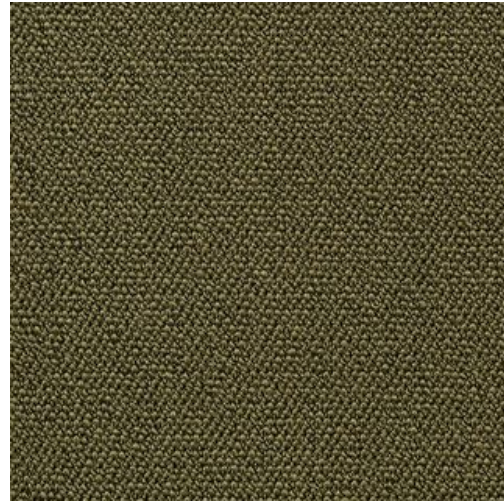
**Composition**

acrylic 74%, polyester 26%

Mimosa is a luxurious fabric characterized by its deep hues and woven look. It is made of Q2, a stain-resistant material ( Rohleder GmbH, Germany), which is easy to clean and maintain. This fabric has excellent maintainability, as dirt does not easily soak into the fibers and is easy to clean.

Dry Clean OK

Water Washable (by Hand) OK



MMG

**Composition**

acrylic 74%, polyester 26%

Mimosa is a luxurious fabric characterized by its deep hues and woven look. It is made of Q2, a stain-resistant material ( Rohleder GmbH, Germany), which is easy to clean and maintain. This fabric has excellent maintainability, as dirt does not easily soak into the fibers and is easy to clean.

Dry Clean OK

Water Washable (by Hand) OK



MMYE

**Composition**

acrylic 74%, polyester 26%

Mimosa is a luxurious fabric characterized by its deep hues and woven look. It is made of Q2, a stain-resistant material ( Rohleder GmbH, Germany), which is easy to clean and maintain. This fabric has excellent maintainability, as dirt does not easily soak into the fibers and is easy to clean.

Dry Clean OK

Water Washable (by Hand) OK

## LEATHER B GENUINE LEATHER



**NEW SMOOTH611**

Genuine leather with the original feel and texture of leather. The expression of natural leather is utilized without any processing such as embossing.



**NEW SMOOTH687**

Genuine leather with the original feel and texture of leather. The expression of natural leather is utilized without any processing such as embossing.



**NEW SMOOTH673**

Genuine leather with the original feel and texture of leather. The expression of natural leather is utilized without any processing such as embossing.



**NEW SMOOTH672**

Genuine leather with the original feel and texture of leather. The expression of natural leather is utilized without any processing such as embossing.





**NEW SMOOTH635**

**Genuine leather with the original feel and texture of leather. The expression of natural leather is utilized without any processing such as embossing.**



**NEW SMOOTH636**

**Genuine leather with the original feel and texture of leather. The expression of natural leather is utilized without any processing such as embossing.**



**NEW SMOOTH685**

**Genuine leather with the original feel and texture of leather. The expression of natural leather is utilized without any processing such as embossing.**



**NEW SMOOTH613**

**Genuine leather with the original feel and texture of leather. The expression of natural leather is utilized without any processing such as embossing.**