

Wood

Bendi's key material, woods are imported from Europe including oak woods, ash woods, and beech wood which passes humid control process and coated with polyurethane



Natural
Oak



Brown
Oak



Black
Oak



Natural
Ash



Brown
Ash



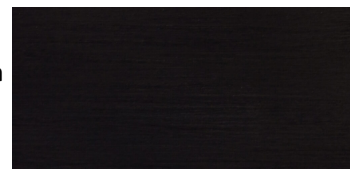
Black
Ash



Natural
Beech

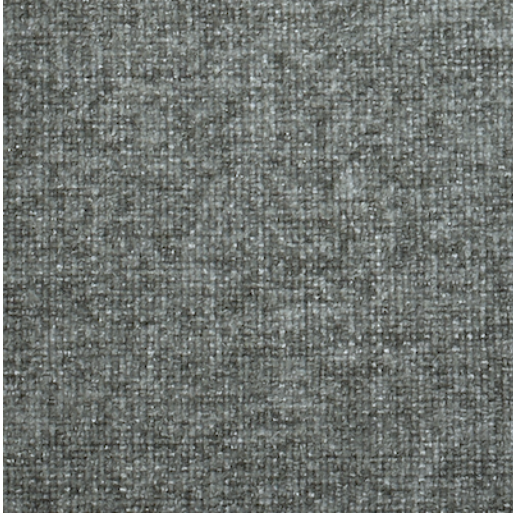


Brown
Beech



Black
Beech

Fabric



FV002
Velvety



FV003
Velvety



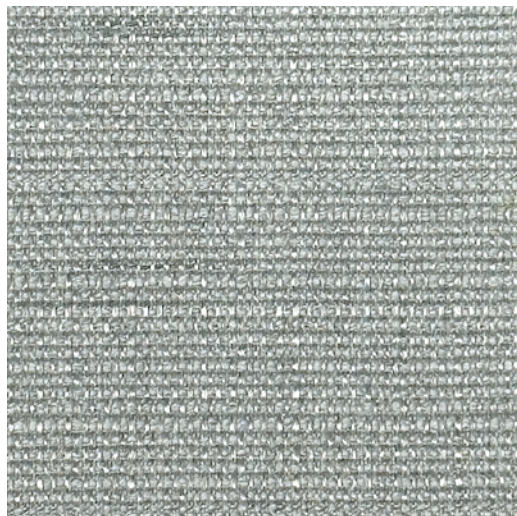
FV005
Velvety



FV007
Velvety



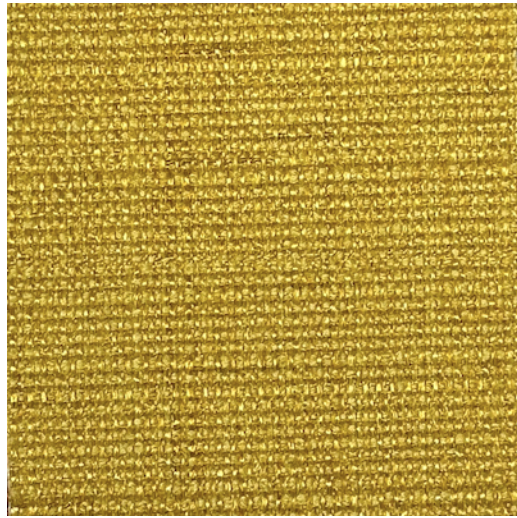
FV101
Slightly Shiny



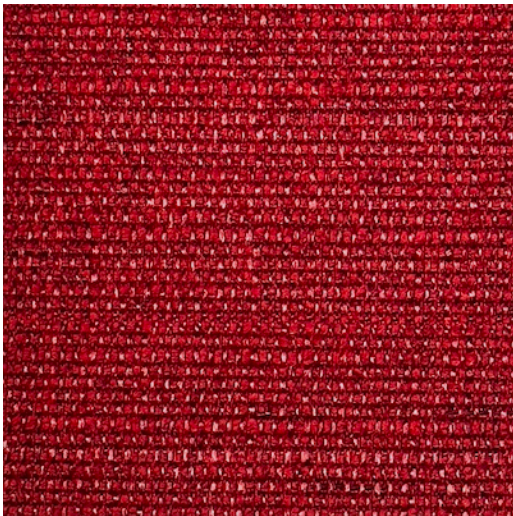
FV102
Slightly Shiny



FV104
Slightly Shiny



FV106
Slightly Shiny



FV108
Slightly Shiny



FV110
Slightly Shiny



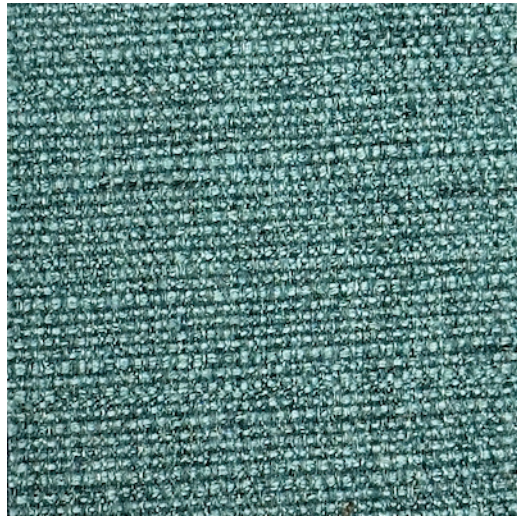
FV111
Slightly Shiny



FV112
Slightly Shiny



FV113
Slightly Shiny



FV114
Slightly Shiny



FV116
Slightly Shiny



FV117
Slightly Shiny



FV118
Slightly Shiny

Sythetic Leather (PVC)



A011
Shiny Finish



A021
Shiny Finish



A031
Shiny Finish



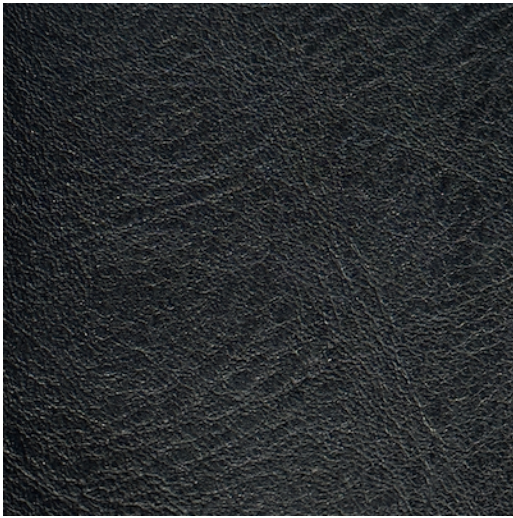
A041
Shiny Finish



A051
Shiny Finish



A061
Shiny Finish



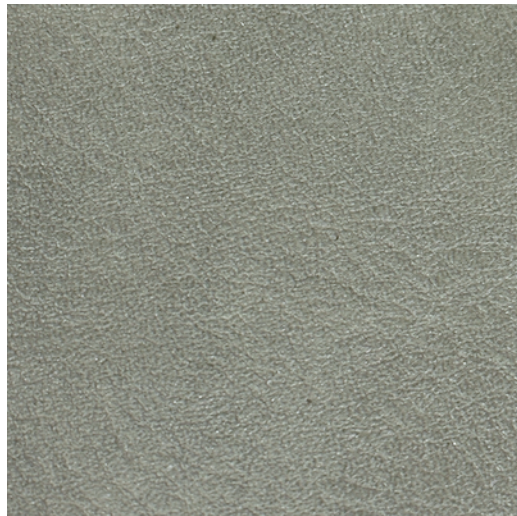
A071
Shiny Finish



A081
Shiny Finish



A091
Shiny Finish



A101
Shiny Finish



VG01
Matt Finish



VG02
Matt Finish



VG03
Matt Finish



VG04
Matt Finish



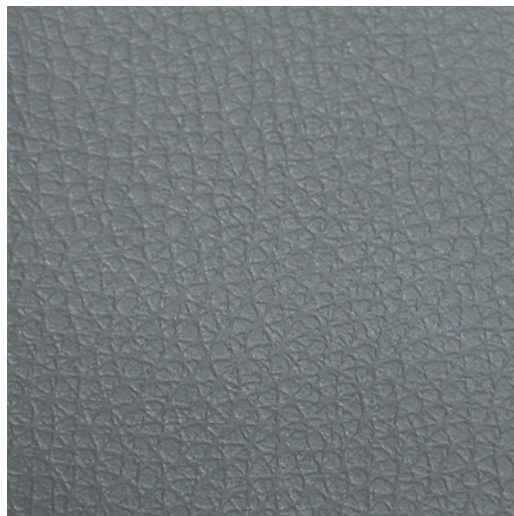
VU71
Matt Embossed



VU72
Matt Embossed



VU73
Matt Embossed



VU74
Matt Embossed



VU75
Matt Embossed



VU76
Matt Embossed



VU77
Matt Embossed