



**WASHROOM  
AUTOMATION**

# About Us

Dolphy is a leading manufacturer and supplier of Premium Washroom and Hotel Amenities Products. With over 10 years of experience, Dolphy has emerged as a global leader offering a variety of designer and innovative products. Dolphy operates across Asia Pacific and the Middle East with offices in Australia, New Zealand, and India, and a team of over 300 professionals. We serve multiples sectors including Health Care Institutions, Educational Institutes, Corporates, Community /Entertainment Centres and more. Dolphy is known for its luxury, environmentally friendly, sustainable products that meet CE certification by SAA, TUV, and ISO standards. We provide fast delivery and on-site warranty with service support. Dolphy has successfully completed 50,000+ projects, trusted by Fortune 500 companies. We provide tailored customization and development services to meet specific project requirements.

## Vision & Mission

We are committed to offering eco-friendly products that conserve energy, water, and natural resources, contributing to a greener society. Our focus over a decade of operation has been **Quality, Innovation, Design, and Sustain ability**. We plan to continue offering high quality, sustainable, hygiene and hospitality products with 8x5 support with quick and efficient customer service. We are continuously expanding our product portfolio in Australia and New Zealand, with the vision to offer 1500 products stocked locally in both Australia and New Zealand by 2025 (from the current 400+ products available in our warehouse in Australia). We hope to be your partner in fulfilling all your Washroom, Hygiene and Hospitality product requirements.

“We Welcome You to Our World.”



# OUR CLIENTS

|   |   |   |  |   |  |
|---|---|---|--|---|--|
|    |    |    |    |    |   |
|    |    |    |    |    |   |
|    |    |    |    |    |   |
|   |   |   |   |   |    |
|  |  |  |  |  |   |
|  |  |  |  |  |   |
|  |  |  |  |  | <br> |
|  |  |  |  |  |   |
|  |  |  |  |  |  |

# COMMERCIAL WASHROOM ACCESSORIES



AUTOMATIC HAND DRYERS



COMBINATION UNITS



BABY CHANGE STATIONS



GRAB BARS  
(ACCESSIBLE COMPLIANT AS1428.1)



SOAP/SANITIZER DISPENSERS



SENSOR TAPS



JUMBO TOILET PAPER  
ROLL DISPENSERS



TOILET ROLL PAPER HOLDERS



PAPER TOWEL DISPENSERS



AUTOMATIC SENSOR DUSTBIN

# INDUSTRY ENTRANCE SOLUTION



FLOOR MARKING TAPES



ANTI SKID TAPES



BRILLE SIGNS

# HI-SPEED JET HAND DRYERS



HEPA Filter



**DAHD0053**  
Power : 1650W  
Material : 304 SS

Brushless Motor



HEPA Filter



**DAHD0043**  
Power : 1650W  
Material : 304 SS



HEPA Filter



UV Light Sterilization

**DAHD0058**  
Power : 750- 1650W  
Material : ABS

Brushless Motor

(Hot & Cold Wave)



**DAHD0073**  
Power : 750W  
Material : ABS



Adjustable Air Speed



HEPA Filter



**DAHD0051-B**  
Power : 1000W  
Material : 304 SS



Adjustable Air Speed



HEPA Filter



**DAHD0051**  
Power : 1000W  
Material : 304 SS

# AIR JET HAND DRYERS



**DAHD0064**  
 Model:ADGE  
 Power : 1100W  
 Material : High Grade ABS  
 (Hot & Cold Wave)



**DAHD0065**  
 Model:ADGE  
 Power : 1100W  
 Material : High Grade ABS  
 (Hot & Cold Wave)



**DAHD0063**  
 Model:Super charge  
 Power : 800W  
 Material : 304 SS  
 Brushless Motor



**DAHD0061**  
 Model:Compact  
 Power : 700W  
 Material : 304 SS



**DAHD0061-B**  
 Model:Compact  
 Power : 700W  
 Material : 304 SS



**DAHD0062**  
 Model:Compact  
 Power : 700W  
 Material : ABS  
 (Hot & Cold Wave)



**DAHD0047**  
 Model:Plaza  
 Power : 1450W  
 Material : ABS  
 (Hot & Cold Wave)



**DWCB0005**  
 Power: 1350W  
 Material : 304 SS  
 Installation: Recessed  
 Hidden Lock

# MULTI FUNCTIONAL WASHROOM PANEL STAINLESS STEEL COMBINED CABINET



High Speed  
Hand Dryer



High Speed  
Hand Dryer



## DWCB001

Material:304 Stainless Steel

Size: 330x1700x130mm

Installation: **Recessed**

3 in 1 Operation:

Paper Dispenser+Hand dryer+waste Bin

- Hand Dryer Power: 1350W

- Paper Dispenser Capacity: 600 C-Fold /  
800 M-Fold

- Waste Bin Capacity: 21 Ltr.

**Hidden Lock**

## DWCB002

Material:304 Stainless Steel

Size: 330x1700x130mm

Installation: **Recessed**

3 in 1 Operation:

Paper Dispenser+Hand dryer+waste Bin

- Hand Dryer Power: 1350W

- Paper Dispenser Capacity: 600 C-Fold /  
800 M-Fold

- Waste Bin Capacity: 21 Ltr.

## DWCB003

Material:304 Stainless Steel

Size: 330x1400x130mm

Installation: **Recessed**

2 in 1 Operation:

Paper Dispenser+waste Bin

- Paper Dispenser Capacity: 600 C-Fold /  
800 M-Fold

- Waste Bin Capacity: 24 Ltr.

**Hidden Lock**

**Customization with Stainless Steel 316 Material, Black Color or Size Modification can be Possible for Bulk Quantity Needs.**

# MULTI FUNCTIONAL WASHROOM PANELS



High Speed  
Hand Dryer



High Speed  
Hand Dryer



High Speed  
Hand Dryer

## DWCB00012

Material: 304 Stainless Steel

Size: 330x1700x130mm

Installation: **Recessed**

3 in 1 Operation:

Paper Dispenser+Hand dryer+waste Bin

- Hand Dryer Power: 1350W

- Paper Dispenser Capacity: 600 C-Fold /  
800 M-Fold

- Waste Bin Capacity: 21 Ltr.

**Hidden Lock**

## DWCB0004

Material: 304 Stainless Steel

Size: 365x1650x160mm

Installation: **Recessed**

3 in 1 Operation:

Automatic Paper Dispenser+Hand Dryer

+Waste Bin

- Hand Dryer Power: 1350W

- Paper Dispenser Operation Mode: Automatic

- Waste Bin Capacity: 23 Ltr.

## DWCB0015

Material: 304 Stainless Steel

Size: 365x1650x160mm

Installation: **Surface**

3 in 1 Operation:

Automatic Paper Dispenser+Hand Dryer+

Waste Bin

- Hand Dryer Power: 1350W

- Paper Dispenser Operation Mode: Automatic

- Waste Bin Capacity: 23 Ltr.



## 2 IN 1 WASHROOM PANELS



### DWCB0006

Material: 304 Stainless Steel

Size: 438x1420x217.5mm

Installation: **Surface**

2 in 1 Operation:

Paper Dispenser+waste Bin

- Paper Dispenser Capacity:

600 C-Fold / 800 M-Fold

- Waste Bin Capacity: 45.5 Ltr.

### DWCB0007

Material: 304 Stainless Steel

Size: 440x1424x310mm

Installation: **Recessed**

2 in 1 Operation:

Paper Dispenser+waste Bin

- Paper Dispenser Capacity:

600 C-Fold / 800 M-Fold

- Waste Bin Capacity: 45.5 Ltr.

### DWCB0016

304 Stainless Steel

Size: 375x1422x231mm

Installation: **Recessed**

2 in 1 Operation:

Automatic HRT Roll Paper Dispenser

+waste Bin

- Waste Bin Capacity: 45.5 Ltr.

# MULTI FUNCTIONAL WASHROOM PANELS



High Speed  
Hand Dryer

## DWCB0013

Material: 304 Stainless Steel

Size: 330x1700x130mm

Installation: **Surface**

3 in 1 Operation:

Paper Dispenser+Hand dryer+waste Bin

- Hand Dryer Power: 1350W

- Paper Dispenser Capacity: 600 C-Fold /  
800 M-Fold

- Waste Bin Capacity: 21 Ltr.

**Hidden Lock**



High Speed  
Hand Dryer

## DWCB0014

Material: 304 Stainless Steel

Size: 330x1700x130mm

Installation: **Surface**

3 in 1 Operation:

Paper Dispenser+Hand dryer+waste Bin

- Hand Dryer Power: 1350W

- Paper Dispenser Capacity: 600 C-Fold /  
800 M-Fold

- Waste Bin Capacity: 21 Ltr.

**Hidden Lock**

# RECESSED PANELS



## DWCB0009

Material:304 Stainless Steel

Size: 361x720x109mm

Installation: **Recessed**

2 in 1 Operation:

Paper Dispenser+waste Bin

- Paper Dispenser Capacity: 600 C-Fold /  
800 M-Fold

- Waste Bin Capacity: 12 Ltr.



## DWCB0010

Material:304 Stainless Steel

Size: 353x622x150mm

Installation: **Recessed**

Operation: Waste Receptacle



## DWCB0011

Material:304 Stainless Steel

Size: 301x441x111mm

Installation: **Recessed**

Operation: Paper Dispenser

# AEROSOL DISPENSERS



## DAPD0006

Automtic Eco Aerosol Dispenser



## DAPD0007 ( programmable )

Automtic Digital Aerosol Dispenser

# AUTOMATIC SOAP / SANITIZER DISPENSERS



**CLASSIC**  
**DSDR0047:** Soap/Gel  
**DSDR0051:** Foam  
**DSDR0057:** Spray  
 Capacity: 1000ml  
 Material: ABS  
 Battery: 4xC Size Batteries  
 ( Not Included )



**CLASSIC**  
**DSDR0048:** Soap / Gel  
**DSDR0052:** Foam  
**DSDR0058:** Spray  
 Capacity: 1000ml  
 Material: ABS  
 Battery: 4xC Size Batteries  
 ( Not Included )



**PLAZA**  
**DSDR0054:** Soap / Gel  
 Capacity: 1000ml  
 Material: ABS  
 Battery: 4xC Size Batteries  
 ( Not Included )

# HEAVY DUTY MANUAL SOAP DISPENSERS



**DSDR0147**  
 Capacity : 1400ml  
 Material : 304 SS  
 Recessed Mount



**DSDR0151**  
 Capacity : 1200ml  
 Material : 304 SS



**DSDR0152**  
 Capacity : 1200ml  
 Material : 304 SS  
 + ABS Container



**DSDR0153**  
 Capacity : 1200ml  
 Material : 304 SS



**DSDR0100**  
 Capacity : 1100ml  
 Material : 304 SS  
 + ABS Container



**DSDR0001**  
**DSDR0037**  
 Capacity : 500ml&1000ml  
 Material : 304 SS



**DSDR0037-B**  
Capacity : 1000ml  
Material : 304 SS



**DSDR0140**  
Capacity : 800ml  
Model: Plaza  
Material: ABS



**DSDR0053**  
Capacity: 800ml  
Model: Plaza  
Material: ABS



**CLASSIC**  
**DSDR0045** Soap /Gel  
**DSDR0049** Foam  
**DSDR0055** Spray  
Capacity : 1000ml  
Operation: Manual  
Material: ABS



**CLASSIC**  
**DSDR0046** Soap /Gel  
**DSDR0050** Foam  
**DSDR0056** Spray  
Capacity: 1000ml  
Operation: Manual  
Material: ABS

## PAPER TOWEL DISPENSERS



**DPDR0016**  
Model:Plaza Ultra SLIMLINE  
Capacity:300Sheets  
PaperSize:23cmx7cm/8cm



**DPDR0017**  
Model:Plaza Ultra SLIMLINE  
Capacity:300Sheets  
PaperSize:23cmx7cm/8cm



**DPDR0034**  
Model:Plaza Ultra SLIMLINE  
Capacity:600Sheets  
PaperSize: 23x8cm/7cm



**DPDR0035**  
Model:Plaza Ultra SLIMLINE  
Capacity:600Sheets  
PaperSize:23cmx8cm/7cm



**DPDR0012**  
Model: CLASSIC SLIMLINE  
Capacity:300Sheets  
PaperSize:25cmx8cm



**DPDR0014**  
Model: CLASSIC SLIMLINE  
Capacity:400Sheets  
PaperSize:23.5cmx8cm



**DPDR0015**  
Model: CLASSIC SLIMLINE  
Capacity:500Sheets  
PaperSize:23.5cmx8cm



**DPDR0033**  
Capacity:600Sheets  
Model: CLASSIC SLIMLINE  
PaperSize:26cmx8cm



**DPDR0028-B**  
Material: 304 SS  
Capacity:600Sheets  
PaperSize:25x8cm



**DPDR0028**  
Material: 304 SS  
Capacity:600Sheets  
PaperSize:25x8cm



**DPDR0063**  
Material: 304 SS  
Capacity:600Sheets  
PaperSize:24x7cm



**DPDR0063-B**  
Material: 304 SS  
Capacity:600Sheets  
PaperSize:24x7cm

## ROLL TOWEL DISPENSER



**DPDR0062**  
Material: 304 SS  
Size: 295mmHx222mmWx180mmD



**DPDR0062-W**  
Material: 304 SS  
Size: 295mm H x 222mm W x 180mmD



**DPDR0020**  
Semi Auto Cut HRT Roll  
Dispenser  
Paper Roll Size:  
Width: 195-200mm  
Dia: <= 200mm/42gsm  
Length: 225 Meters



**DPDR0030**  
Material: ABS  
Capacity: 600Sheets  
Operation: Electrical + Battery  
Operated by Mobile App  
6 x c Size Battery Duracell (Not Included )  
Length Adjustable 5 Level  
Automatic Cutting of Paper and trimming

## CENTER PULL PAPER DISPENSER

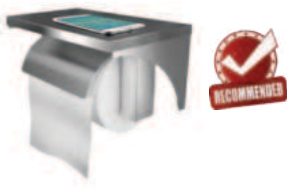


**DTPR0039**  
Material : ABS  
Size : 263mm(L)x231mm(W)x326mm(H)



**DTPR0040**  
Material : ABS  
Size : 263mm(L) x 231mm(W) x 326mm(H)

# STANDARD TOILET ROLL DISPENSERS



**DTPR0015**  
Material:304 SS  
With Mobile Stand  
Wall Mount



**DTPR0016**  
Material:304 SS  
With Mobile Stand  
Wall Mount



**DTPR0025**  
Material:304 SS  
With Mobile Stand  
Wall Mount



**DTPR0026**  
Material:304 SS  
With Mobile Stand  
Wall Mount



**DTPR0038**  
Material:304 SS



**DTPR0037**  
Material:304 SS



**DTPR0024**  
Material:304 SS



**DTPR0023**  
Material:304 SS



**DTPR0035**  
Material :304 SS  
Capacity:2 Rolls



**DTPR0036**  
Material:304 SS  
Capacity:3 Rolls

# JUMBO TOILET ROLL DISPENSERS



**DTPR0013**  
Material :304 SS  
Roll Size: 225mm



**DTPR0014**  
Material :ABS  
Model:Plaza  
Roll Size: 225mm



**DTPR0007**  
Material:ABS  
Model:Classic  
Roll Size: 225mm



**DTPR0013-B**  
Material :304 SS  
Roll Size: 225mm



**DTPR0022 (TRANSPARENT GRAY)**  
Material:ABS  
Model: Classic TwinJumbo



**DTPR0021 (WHITE)**  
Material :ABS  
Model: Classic TwinJumbo



**DTPR0009**  
Material :ABS  
Model: Classic Jumbo

# BABY CHANGING STATIONS



**DOLPHY BONDING**  
WITH YOUR **BABY**



### DBCS0001

Material : HDPE (High Density Polyethylene)  
Mount Type : Surface Mounted  
Dimensions : 855mmx560mmx107mm



### DBCS0004

Material : 304 SS  
Mount Type : Surface Mounted  
Dimensions : 905mmx520mmx104mm



### DBCS0003

Material : HDPE (High Density Polyethylene)  
Dimensions : 510mmx340mmx145mm  
Mount Type : Surface Mounted



### DBCS0005

Material : 304 SS  
Dimensions : 940mmx585mmx104mm  
Mount Type : Recessed



## RUBBISH BINS



**DWBN0014**  
Model : Plaza  
Capacity: 32L  
Wall Mount/Floor Mount



**DWBN0015**  
Model : Plaza  
Capacity: 32L  
Wall Mount/Floor Mount



**DWBN0084**  
Model : 18L Sanitary Bin  
Capacity: 18L  
Floor Mount

## STAINLESS STEEL BINS



**DWBN0016**  
Stainless Steel Bin with Ashtray  
Capacity: 10L  
Size: 250x610mm



**DWBN0017**  
Capacity: 3L  
Size: 200x250mm



**DWBN0018**  
Capacity: 5L  
Size: 252x295mm



**DWBN0023**  
Capacity: 3L  
Size: 170x240x260mm



**DWBN0024**  
Capacity: 6L  
Size: 210x280x316mm



**DWBN0025**  
Capacity: 5L  
Size: 146x296x281mm



**DWBN0026**  
Capacity: 8L  
Size: 166x340x301mm



**DWBN0028**  
Capacity: 10L  
Size: 225x165x275mm



**DWBN0029**  
Capacity: 10L  
Size: 225x165x275mm

# BRAILLE SIGNS



DTBS0001



DTBS0002



DTBS0003



DTBS0004



DTBS0005



DTBS0006



DTBS0007



DTBS0008

# WASHROOM HOOK HARDWARES



**DBRH0001**  
Single Robe Hook  
Material:304 SS



**DBRH0002**  
Double Robe Hook  
Material:304 SS



**DBRH0003**  
Double Robe Hook  
Material:304 SS



**DBRH0004**  
Single Robe Hook - Silver  
Material:304 SS



**DBRH0005**  
Single Robe Hook - Silver  
Material:304 SS



**DBRH0006**  
Double Robe Hook - Silver  
Material:304 SS



**DBTR0001**  
Round Hand Towel Ring  
Material:304 SS



**DBTR0002**  
Single Towel Rail  
Material:304 SS



**DBTR0003**  
Double Towel Rail  
Material:304 SS

# GRAB RAILS (ACCESSIBLE COMPLIANT AS1428.1)



**DHGB0037**  
Material: 304 ss  
Size : 300mm C to C



**DHGB0038**  
Material: 304 ss  
Size : 400mm C to C



**DHGB0039**  
Material: 304 ss  
Size : 450mm C to C



**DHGB0040**  
Material: 304 ss  
Size : 600mm C to C



**DHGB0041**  
Material: 304 ss  
Size : 750mm C to C



**DHGB0042**  
Material: 304 ss  
Size : 900mm C to C



**DHGB0043**  
Material: 304 ss  
Size : 1000mm C to C



**DHGB0044**  
Material: 304 ss  
Size : 1200mm C to C

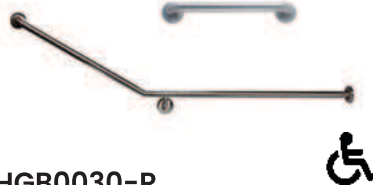


**DHGB0045**  
Material: 304 ss  
Size : 1500mm C to C

## ACCESSIBLE GRAB RAILS



**DHGB0030-L**  
Material: 304 ss  
30° Flush Mount Side Wall  
840x700mm LH



**DHGB0030-R**  
Material: 304 ss  
30° Flush Mount Side Wall  
840x700mm RH



**DHGB0031-L**  
Material: 304 ss  
90° Flush Mount Side Wall  
950x600mm LH



**DHGB0031-R**  
Material: 304 ss  
90° Flush Mount Side Wall  
950x600mm RH



**DHGB0032-L**  
Material: 304 ss  
30° Flush Mount Rear/Side Wall  
950x700mm LH



**DHGB0032-R**  
Material: 304 ss  
30° Flush Mount Rear/Side Wall  
950x700mm RH



**DHGB0034-L**  
 Material: 304 ss  
 750mmx750mm  
 Corner Wall Flush Mount  
 Shower Grab Rail LH



**DHGB0034-R**  
 Material: 304 ss  
 750mmx750mm  
 Corner Wall Flush Mount  
 Shower Grab Rail RH



**DHGB0035**  
 Material: 304 ss  
 90° Ambulant Grab Rail  
 450X450mm



**DHGB0036**  
 Material: 304 ss  
 Pull Down Grab Rail  
 With Toilet Roll Holder  
 850mmL X 315mmH



**DHGB0033-L**  
 Material: 304 ss  
 1100mm x 700mm  
 Offset Flush  
 Mount Shower  
 Grab Rail LH



**DHGB0033-R**  
 Material: 304 ss  
 1100mm x 700mm  
 Offset Flush  
 Mount Shower  
 Grab Rail RH



**DHGB0047**  
 Material: 304 ss  
 30° Flush Mount Wrap  
 Around Grab Rail Modular  
 1100x900mmx700mm LH



**DHGB0048**  
 Material: 304 ss  
 30° Flush Mount Wrap  
 Around Grab Rail Modular  
 1100x900x700mm RH



**DHGB0049**  
 Material: 304 ss  
 90° Flush Mount Wrap  
 Around Grab Rail Modular  
 1100x1025x600mm LH



**DHGB0050**  
 Material: 304 ss  
 90° Flush Mount Wrap  
 Around Grab Rail Modular  
 1100x1025x600mm RH

# AUTOMATIC LED DISPLAY SHOE COVER DISPENSER



## DSCD0006

Material :ABS/ Heavy Duty

Fully Automatic

Capacity of shoe Cover: 1000 PC

Dimensions : 780mmx445mmx330mm

Power: 75W-1300W

Net Weight: 21KG

## FLOOR MARKING TAPES



### DFMT0001

Material : Vinyl  
Size : 2inch  
Color : ZEBRA  
Tap Roll Size : 22 Mtr



### DFMT0002

Material : Vinyl  
Size : 2inch  
Color : YELLOW  
Tap Roll Size : 22 Mtr



### DFMT0003

Material : Vinyl  
Size : 2inch  
Color : RED  
Tap Roll Size : 22 Mtr



### DFMT0004

Material : Vinyl  
Size : 2inch  
Color : GLOW IN DARK  
Tap Roll Size : 5 Mtr

## ANTI SKID TAPES



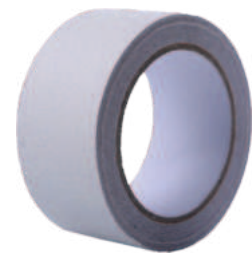
**DSTP0001** : 2inch  
**DSTP0002** : 1 inch  
Color : Black  
Tap Roll Size : 18 Mtr



**DSTP0006** : 2inch  
Material : PET -2  
Color : Zebra Stripe  
Tap Roll Size : 18 Mtr



**DSTP0003**  
Size : 2inch  
Color : Black With  
Green Florescent  
Tap Roll Size : 18 Mtr



**DSTP0004** : 2inch  
**DSTP0005** : 1 inch  
Color : Transparent  
Tap Roll Size : 18 Mtr

# EXPLORE OUR PREMIUM HOTEL AMENITIES



RFID DOOR LOCKS



ELECTRIC KETTLE & TRAY SETS



ELECTRIC SAFE LOCKERS



ROOM TELEPHONE



MAGNIFYING MIRRORS



HAIR DRYERS



SHAMPOO, SHOWER GEL DISPENSER



ABSORPTION MINIBARS



ROOM DUSTBINS



COFFEE MACHINE



IRON BOARDS



STEAM IRONS



DIGITAL WEIGHT SCALE



DOCK STATION DIGITAL CLOCKS



EMERGENCY TORCH LIGHTS



LUGGAGE RACKS



HOTEL LUGGAGE CARTS



HOUSEKEEPING TROLLEYS



## DOLPHY AUSTRALIA

Unit 1/50 Gwen Rd., Cranbourne West,  
Victoria - 3977, Australia

info@dolphy.com.au | 03 8787 8906 | www.dolphy.com.au

## DOLPHY NEW ZEALAND

66 Sale Street, Auckland,  
New Zealand-1010

+64 (0)21 908300 | nz@dolphy.com.au

## DOLPHY INDIA

Dolphy House, NR. Priyanka Intercity, kadodara-  
Parvat Patia Road, Surat-395010 (Gujrat, INDIA)

info@dolphy.in | www.dolphy.in | +91 95 20 20 20 35

dolphy®



\*DOLPHY is a Registered Trademark

SCAN FOR  
E-CATALOGUE