

CEU INSTUCTION MANUAL

(1000 records)

CEU use 4xAA batteries, please load 4xAA batteries for power

Every time to use,need turn on the power(top right side switch " | "), "SECURE" display.

Every time after using,switch off power supply (top right side switch "O") ,store well .

1.Override to open the safe

Need two groups code for CEU open the safe:one group is CEU management code, one group is safe open code.

The using method as follows:

1)connect correctly CEU and safe by communication line

2) input the CEU management code (factory default code is "3333",then shows "3333-- "), press "LOCK (#)".If the code is wrong shows "ERROR".if the code is correct,shows"GOOD"

3) input safe open code (factory default code is "4444" ,then shows: "4444--"), press "LOCK (#)",If the code is wrong shows "ERROR",if the code is correct, the door be opened,safe and CEU shows "OPENED" at the same time. .

2.Change the code&reset the code

1)change management code

Press "CLEAR (*)" twice, show "PROG", input current management code (factory default code is"3333"); press "CLEAR (*)", then click "1", "NEW - C1" display,enter new 4 digit management code, press "LOCK (#)", show "DONE " means modified successful.

2)change safe opening code.

Press "CLEAR (*)" twice, show "PROG",input current opening code (factory default code is "4444"),press "CLEAR (*)", then click "2", show "NEW - C2"; enter new 4 digit opening code,press "LOCK (#)", show "DONE", means modified successful.

3) Reset the code (when one password be forgotten)

Press "CLEAR (*)" twice, show "PROG",input function code "9101*9",show "RESET", that means reset success.

(return to factory default setting,management code is: 3333; the opening code is 4444. This process is only allowed to operated by hotel manager)

3. Set room number for safe

- 1) connect correctly CEU and safe by communication line, power on CEU.
- 2) press "CLEAR (*)" twice, show "PROG"; input function code "7510*6", show "SAFEID", set a 4 digits room number and press "LOCK (#)", show "DONE", and room number display on safe screen, that means set success.

4. Read the opening records from safe

- 1) connect correctly CEU and safe by communication line.
- 2) press "CLEAR (*)" twice, show "PROG"; input function code "7510*8", show "SAFEID", input a 4 digits safe ID (usually use its room number) and press "LOCK (#)", start reading the record, the screen displays the total number of records, and then starts counting down. When the reading is finished, the screen displays "END"

5. View records saved in the CEU

Press "CLEAR (*)" twice and the screen displays "PROG". Then enter the function code "7706*", display "SAFEID", enter the safe ID (set by step "4. Read the opening records from safe"), press "LOCK (#)", then you can query the recorded record.

press 1 to display the record number and unlock mode,

press 2 to display the date,

press 3 to display the time,

press 4 to display the previous record,

press 5 to display the newest record (number 1),

press 6 to display the next record,

press "CLEAR (*)" to exit the record view.

For example:

press "LOCK (#)", it will display "0001 2",

press "2" to display "090312",

press "3" to display "124122".

Press "4" to display "0002 3",

press "6" to return to the first record "0001 2",

Whenever you press "5" to return directly to the newest record "0001 2".

"0001 2" 0001 indicates the first record, and 2 indicates how to unlock the safe (1 stands for user code, 2 stands for the master code, 3 stands for the handset, and 9 stands for mechanical key)

"090312" stands for on March 9, 2012

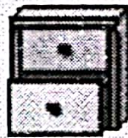
"124122" stands for 12:41:22

INSTRUCTION OF HOW TO READ THE AUDIT REPORT

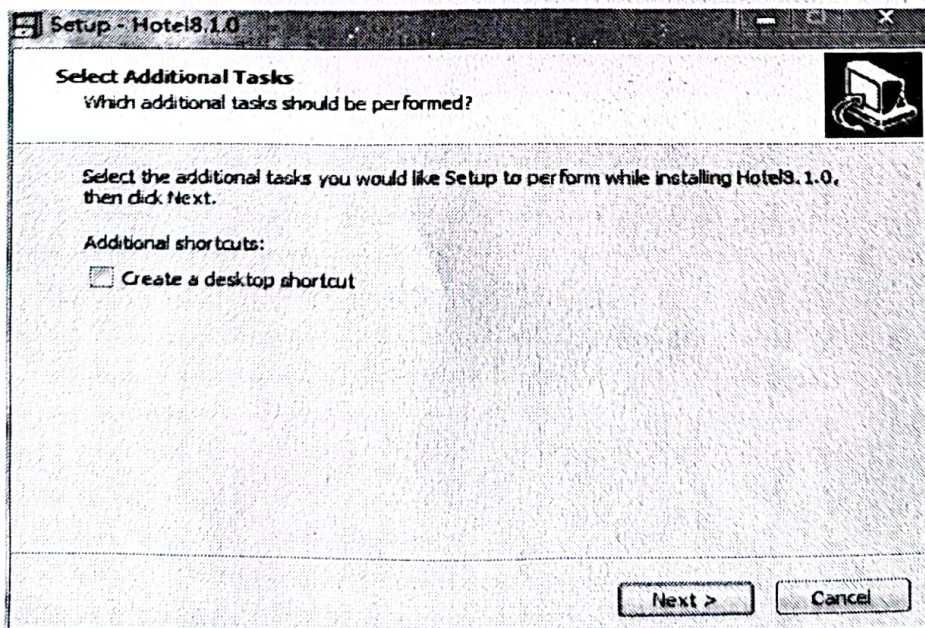
Before read the audit report, please download records from Safe to CEU (refer to "4. Read the opening records from safe")

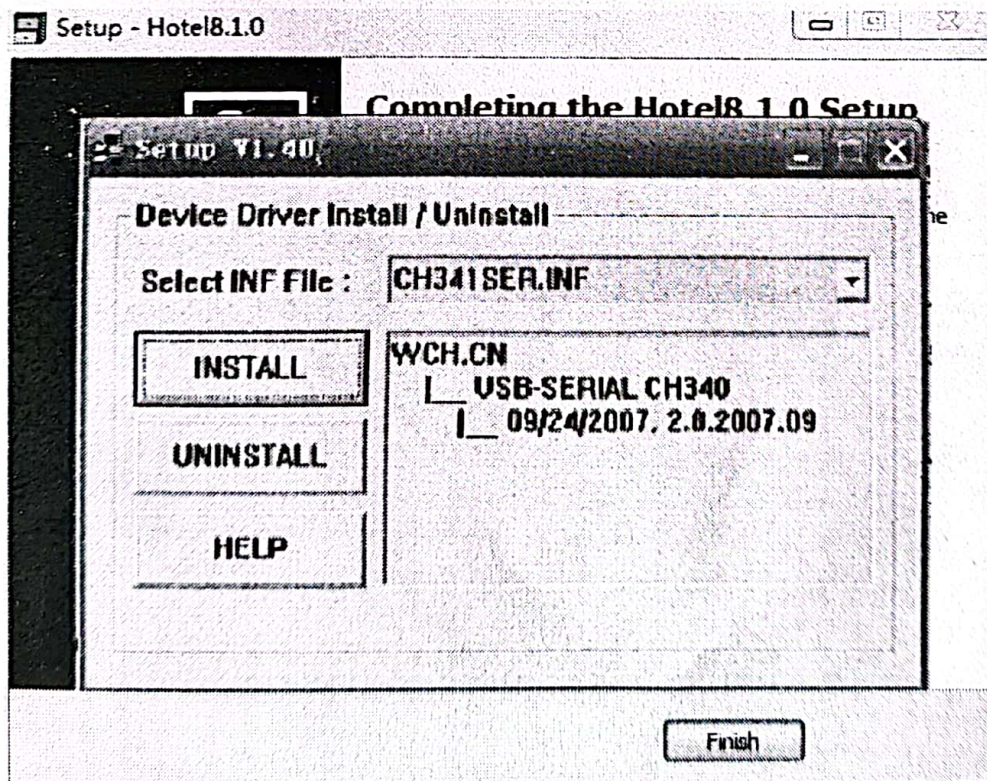
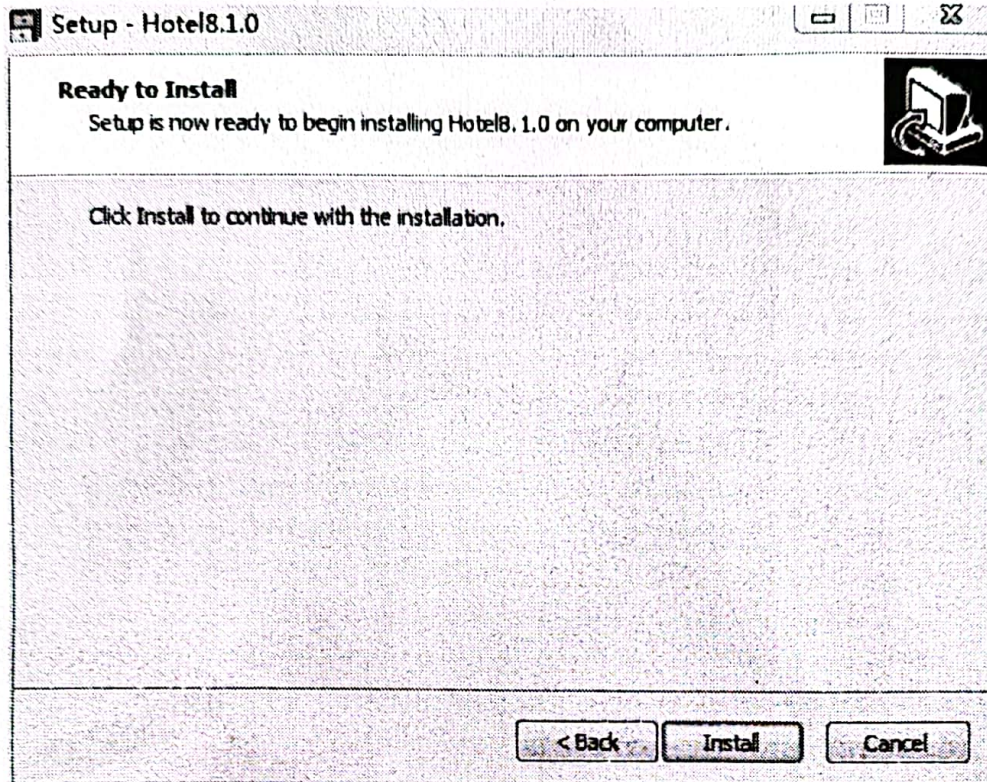
1. Install software "Hotel8.1.0" (if already installed, directly go to step2)

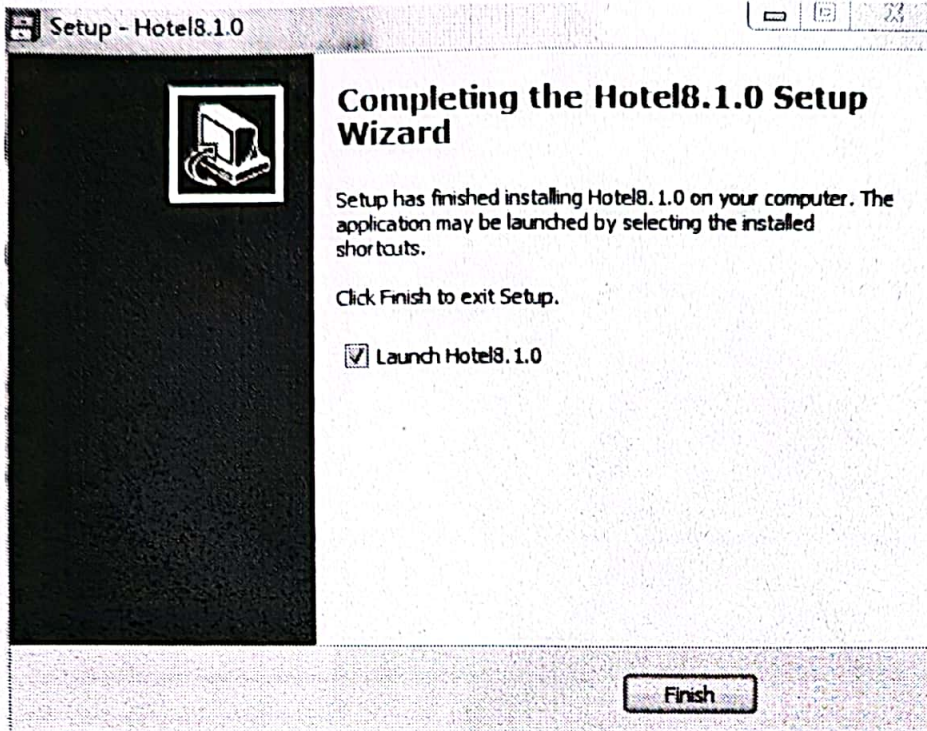
Open file and find "setup8.1.0.exe" and install



setup8.1.0.
exe

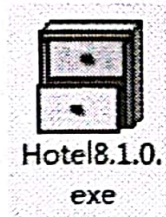




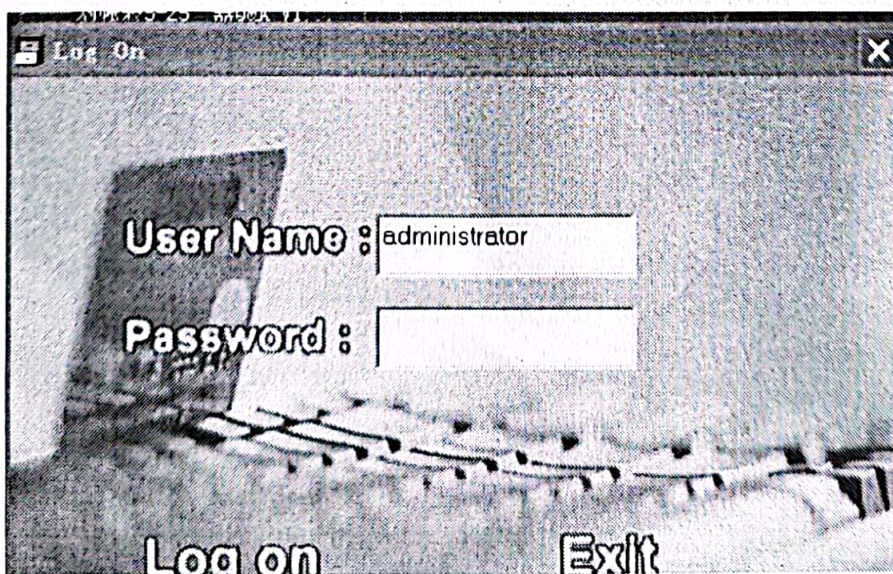


After installed,click "confirm" and "finish" button to complete process.

2.find installed position and open file "Hotel8.1.0" as below picture shows:



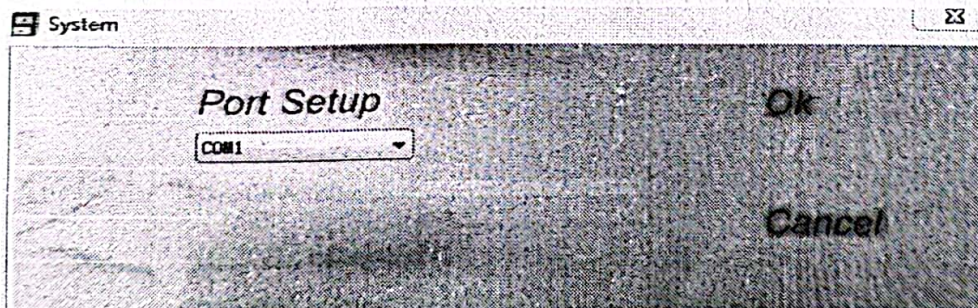
Input password "1234" and log on



Shows up



connect CEU with PC, power on CEU, then click "port setup"



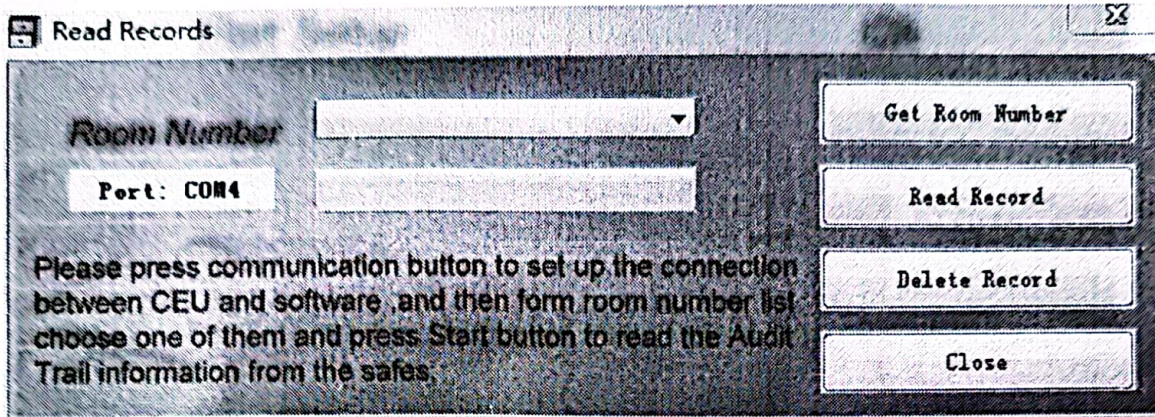
find from your computer-hardware-device manager and remember COM port number for CH340, as below picture shows CH340 corresponding port is COM4



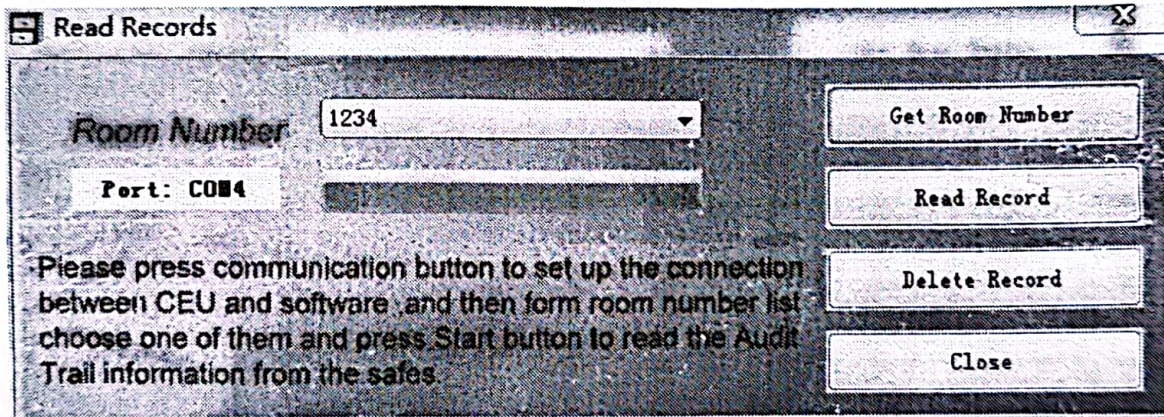
select that COM port, then click "ok"

3. Read records

1) click "Read records", shows up



2) click "Get Room Number" shows up



3) select the Room Number and click "Read Record", shows up

