



Maintaining and Troubleshooting the Large Foam Herbicide Dispenser

Update: December 9, 2021

General Maintenance Tips

- When out in the field try to keep the dispenser as clean as possible.
- Avoid storing herbicide in the dispenser for longer than 2 weeks.
- Clean and lubricate the dispenser approximately every 5 uses or so.
- When storing the dispenser for long periods (for example, over the winter), clean and lubricate the dispenser.



Dirt inside the pump head often causes pressurization failure.



Dirt can enter the pump cylinder through air inlet holes.



Dirt and debris on the pump piston will prevent pressurization.



Paper towels or rags

pencil or pen

Silicone grease

old toothbrush

12 mm wrench or adjustable wrench

Tools for the job



Unscrew nozzle.



Unscrew mixing chamber.



Push mixing media out of mixing chamber using blunt end of pencil or pen.



Mixing media
removed from
mixing chamber

Soak all items in soapy water if
dirty. Check for damage.



Remove gray
adapter.



Remove white
strainer from dip
tube.



Place white
strainer inside
gray adapter.

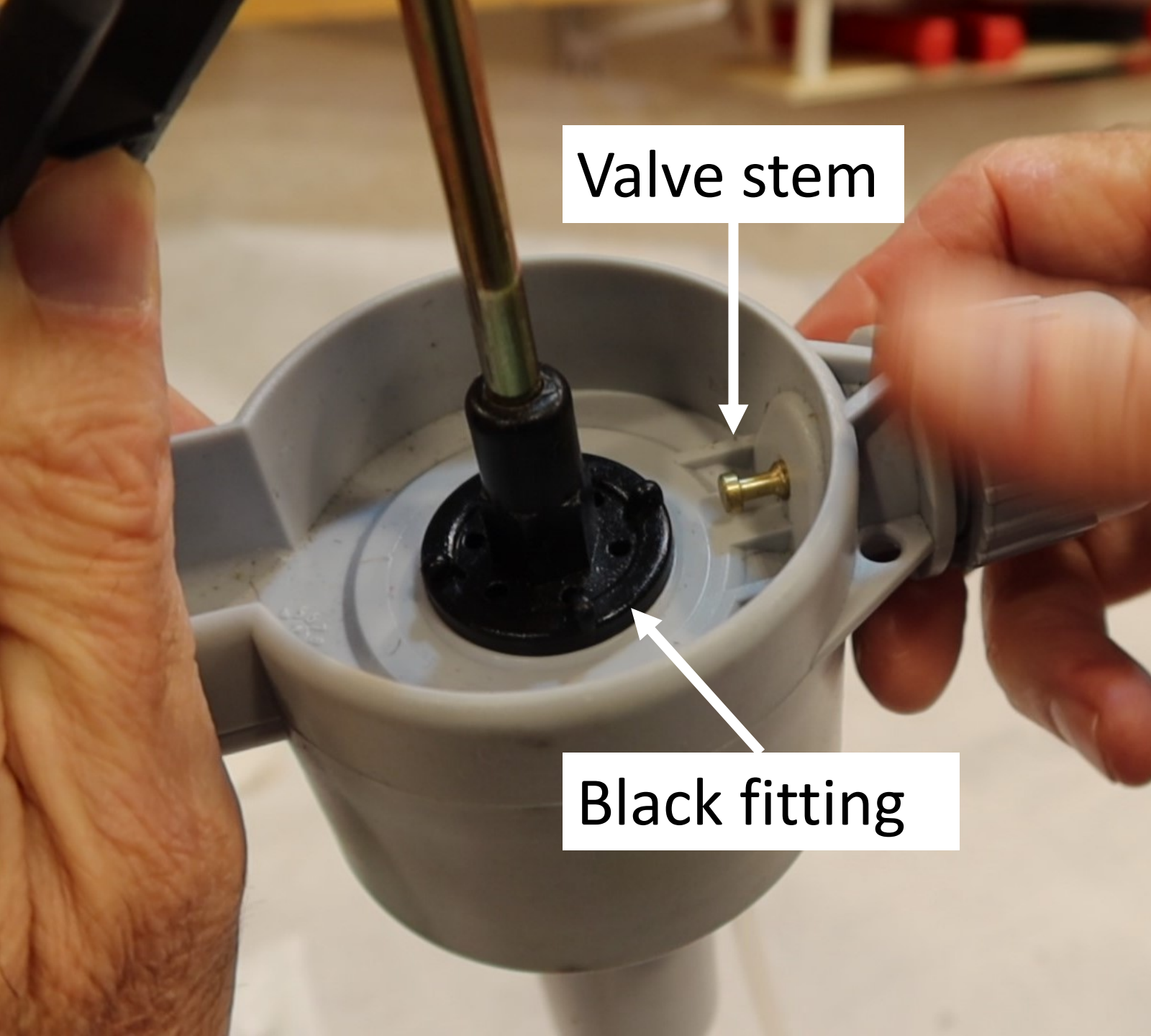


With white strainer inside it, screw gray adapter **part way** onto the pump head.

Leave space as shown at left.



Lift off the black trigger.



Valve stem

Black fitting

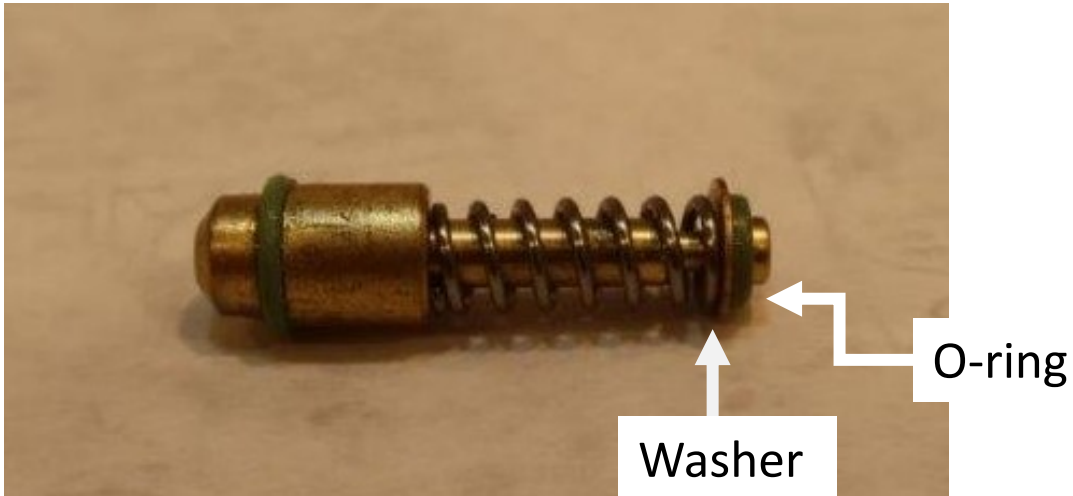
Black fitting and valve stem are now visible.



Use pencil or pen tip to push the valve stem out.



Disassemble the valve stem. Inspect the two O-rings and then grease O-rings with silicone grease. Reassemble.





Unscrew the black fitting with 12 mm wrench.



Pull out the piston from the pump cylinder.



Use toothbrush
and paper towel to
clean out pump
cylinder.

Soak all items in hot soapy water
if dirty. Check for damage.



Clean pump head
with old
toothbrush.



Examine inside of pump cylinder. Make sure it is free of dirt and debris.



Clean piston.

Soak in hot soapy water if dirty.
Check for damage.



Remove O-ring
from piston and
check for damage.

Work silicone
grease into O-ring
if in good shape.



Reattach O-ring to piston.



Apply grease
liberally to inside
of pump cylinder.



Place pump head upside down.



Lift umbrella valve flap up with fingernail, and spread grease underneath the flap.



Spread grease over the entire flap surface. Wipe off excess.



Insert piston back
into pump
cylinder.



Tighten black fitting.

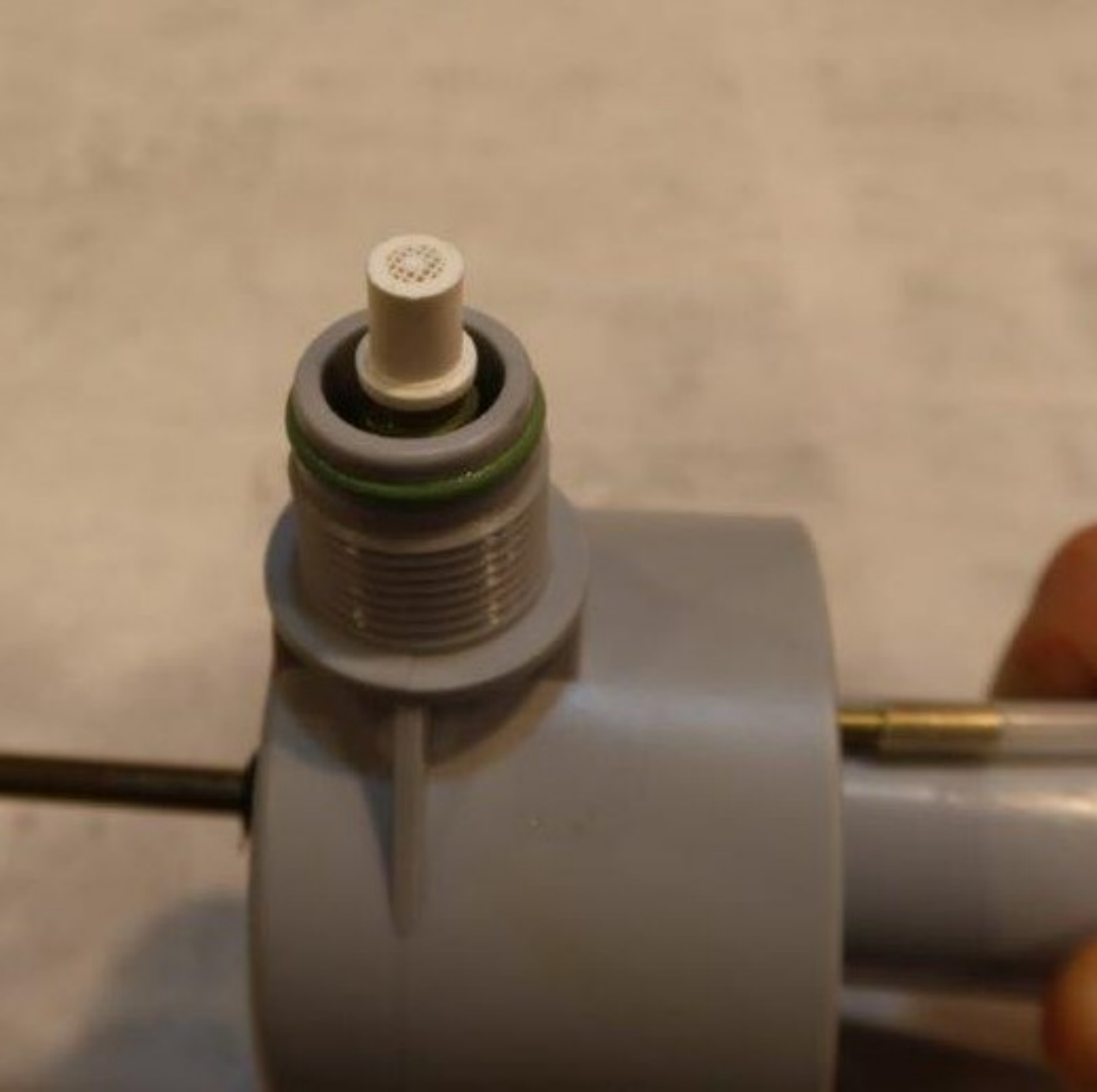
Don't overtighten!



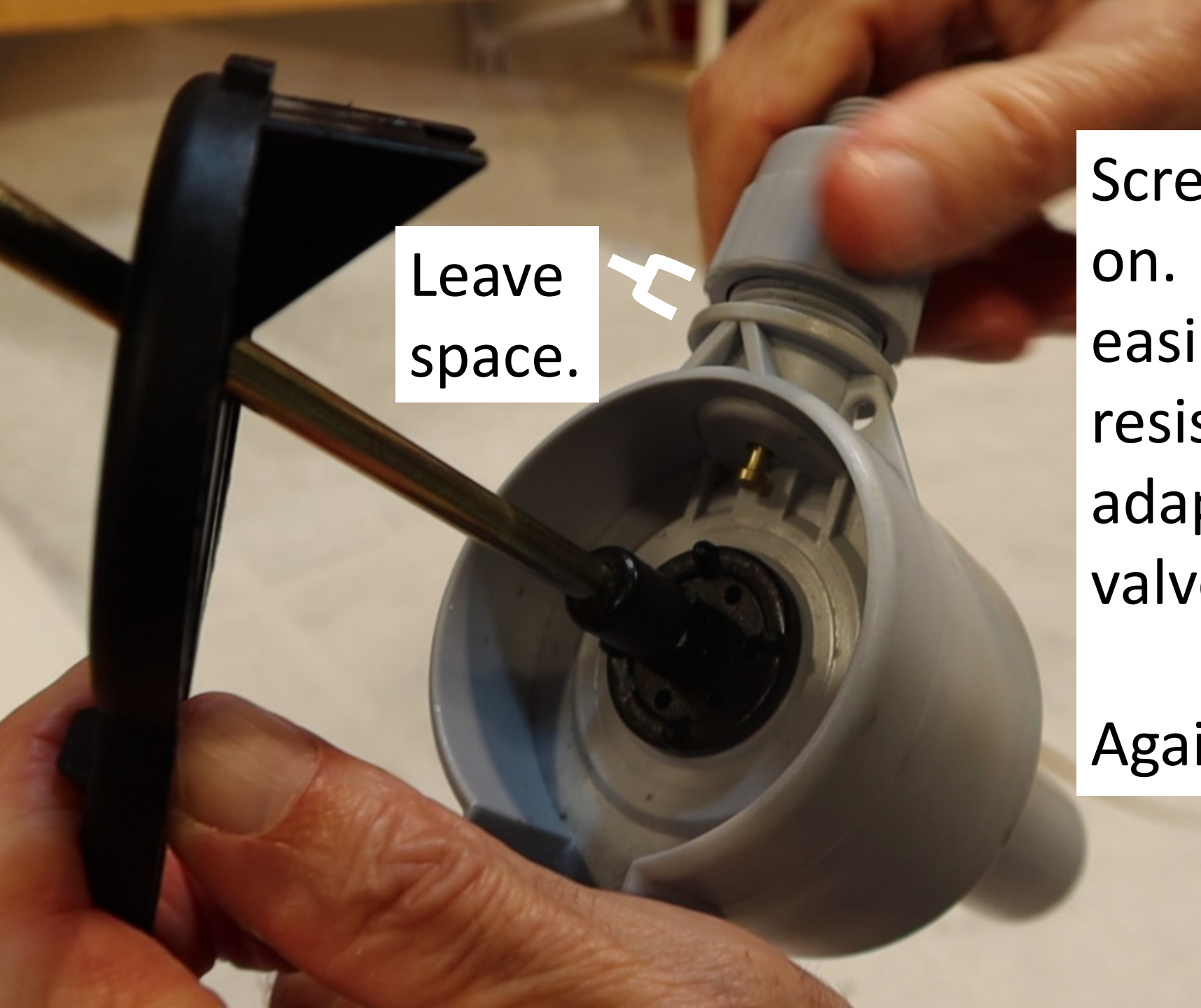
Insert valve stem
back into the
pump head.



Place white
strainer back
inside gray
adapter.



Objective is to line up the white strainer inside the gray adapter like this.



Leave space.



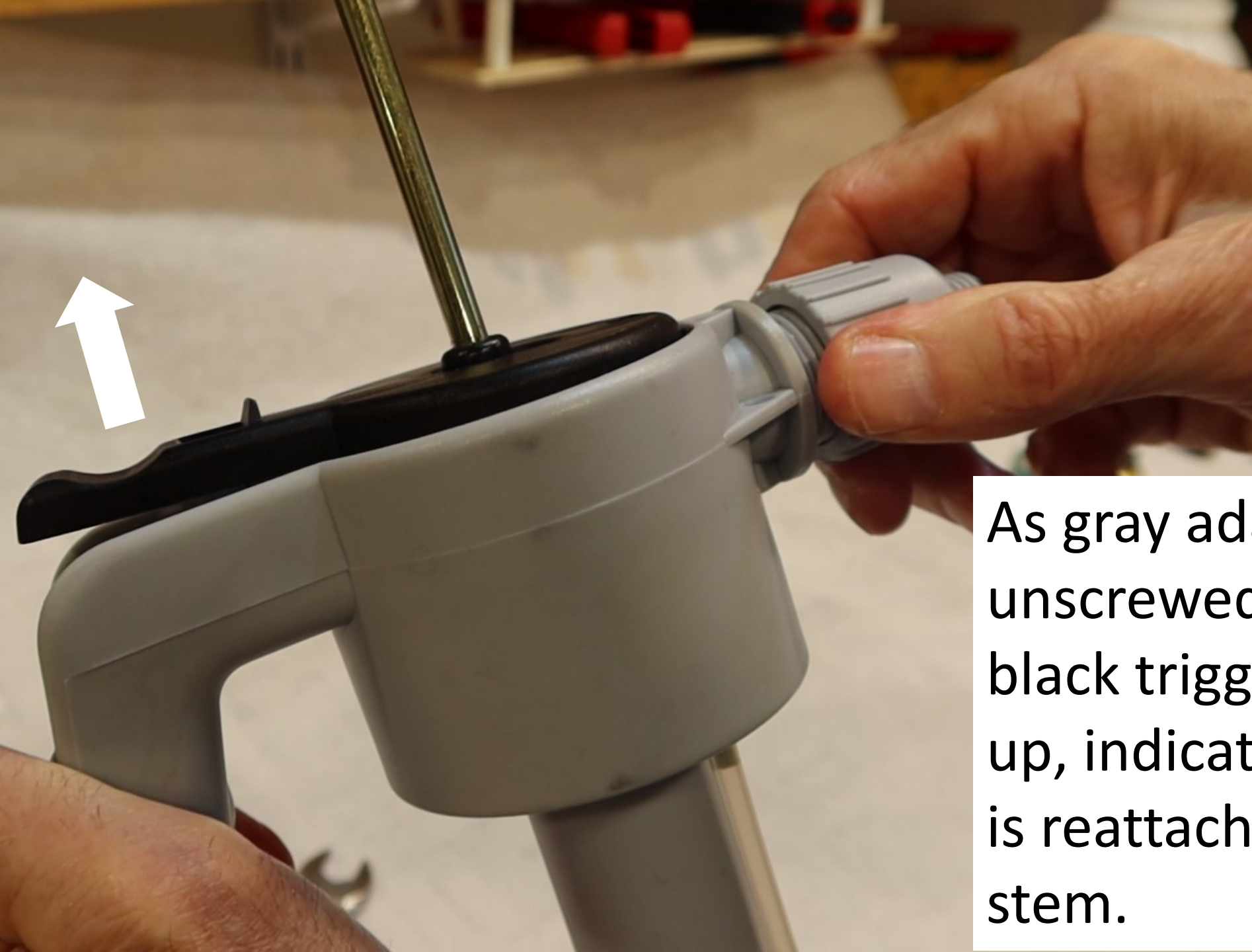
Screw gray adapter back on. It should screw on easily. If you meet resistance, remove gray adapter and reposition valve stem and try again. Again, leave space.



Place black trigger into position.



Unscrew the gray adapter. . .



As gray adapter is unscrewed, the end of the black trigger should rise up, indicating the trigger is reattached to the valve stem.



Remove gray
adapter and
place strainer
back on dip
tube.



Grease O-ring.



Reattach gray adapter.



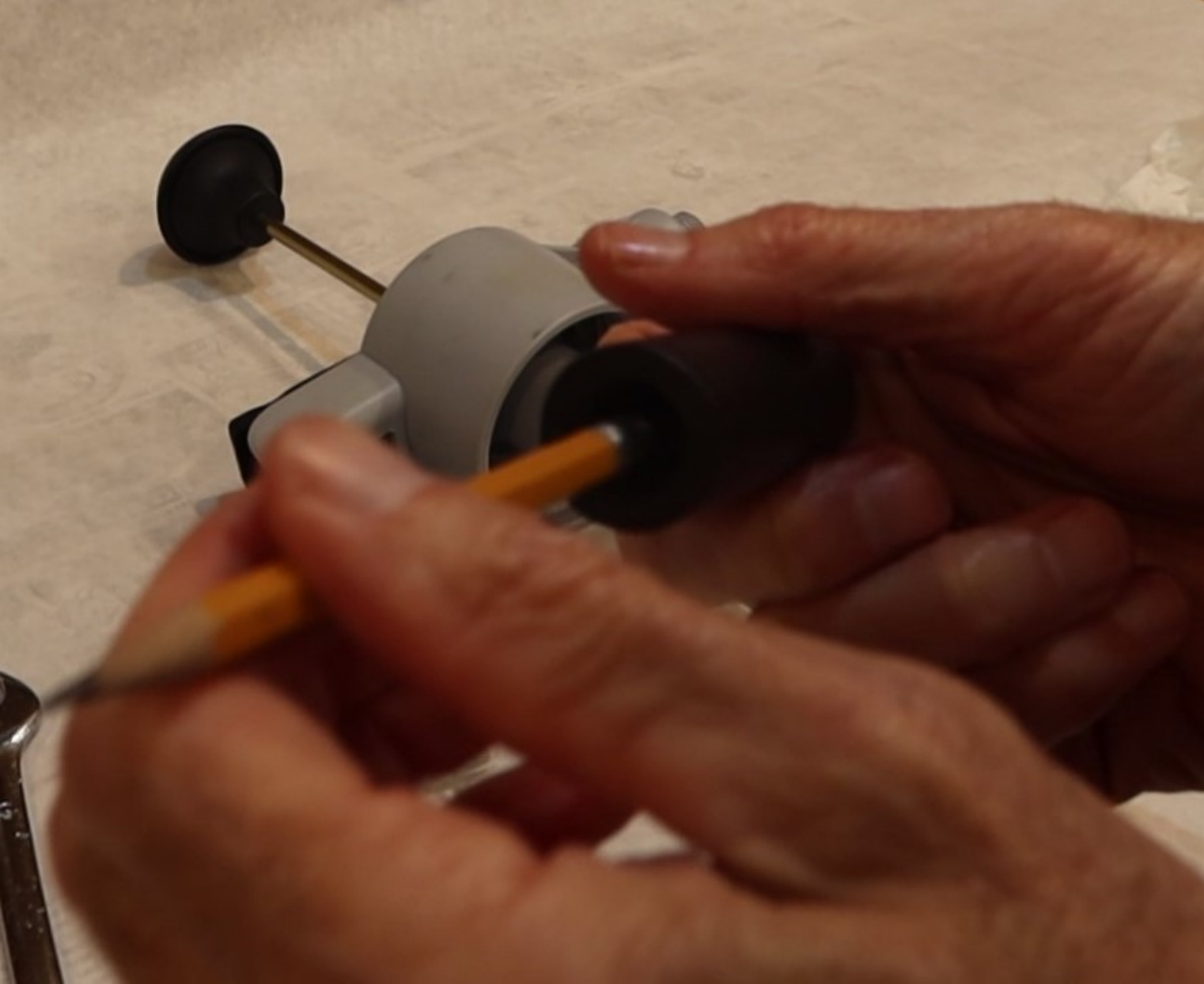
Grease the top
rim of the
tank.



Place pump
back on tank
and tighten
and untighten
a few times to
work grease
into tank seal.



Check tank seal
to see if it is
fully greased.



Use blunt end of pencil to *lightly* push mixing media back into mixing chamber.



Mixing media should be pushed in just far enough that female threads of mixing chamber are visible.



Reattach
mixing
chamber and
nozzle to the
dispenser.



Test empty
dispenser to
make sure it
holds
pressure.

That's It!