



**Cetra® 6036 Drop-In Bathtub**

Letter	Description	Soaking	Pure Air®	Whirlpool
-	Drain Location		End	
-	Equipment Location	--	Opposite of Drain	
-	Cutout Template	--		
-	Drop-In Cutout Dimensions (L x W)	58" x 34" (1473 mm x 864 mm)		
-	Total Weight	867 lbs (393 kg)	883 lbs (401 kg)	901 lbs (409 kg)
-	Floor Loading	58 lb/ft² (283 kg/m²)	59 lb/ft² (288 kg/m²)	60 lb/ft² (293 kg/m²)
-	Operating Gallons (Min./Max.)	67 Gal (254 L)	38/67 Gal (144/254 L)	47/67 Gal (178/254 L)
-	Product Weight	61 lbs (28 kg)	77 lbs (35 kg)	95 lbs (43 kg)
-	Soaking Depth	15.5" (394 mm)		
L	Outer Length	60" (1524 mm)		
W	Outer Width	36" (914 mm)		
H	Overall Height	21.25" (540 mm)		
A	Overflow Height	16.78" (426 mm)		
B	Long Edge to Drain Center	9" (229 mm)		
C	Short Edge to Drain Center	18" (457 mm)		
D	Drain Shoe Length	7.5" (191 mm)		
E	Deck Height	2" (51 mm)		
F	Deck Width*	1.25" (32 mm)		
G	Service Access Dimensions	12" x 18" (305 mm x mm)		
I	Floor Cutout for Drain	12" x 4" (305 mm x 102 mm)		
J	Interior Dimensions Bottom of Bath (L x W)	42" x 22.2" (1067 mm x 564 mm)		
K	Interior Dimensions Top of Bath (L x W)	51.3" x 30.5" (1303 mm x 775 mm)		
L2	Interior Depth - Drain End	19.5" (495 mm)		
M	Backrest Angle	37°		
N	Footprint (L x W)	--		

**NOTE**

The overall dimensions are nominal with a tolerance of +0 and -.25" (6 mm).

Electrical Specification (requires a separate, dedicated GFCI protected circuit):

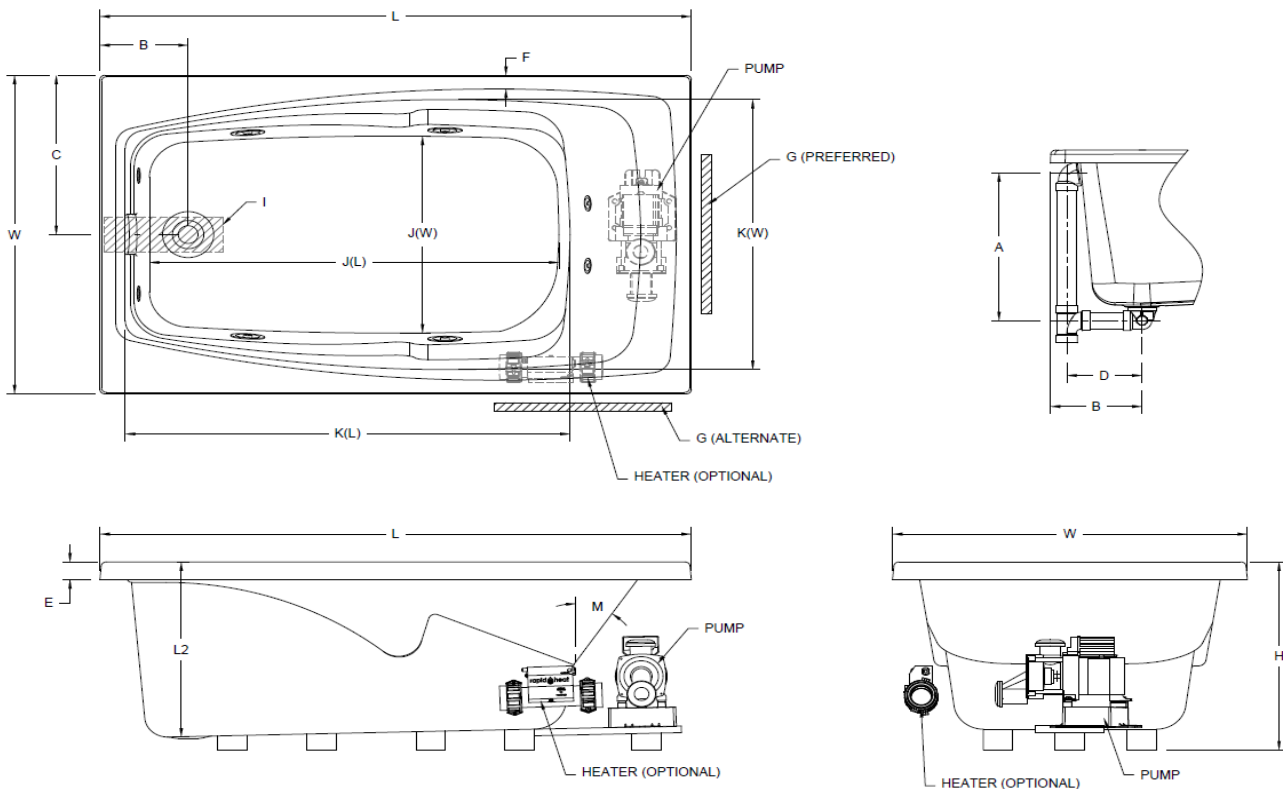
Model with Components		GFCI (60Hz)
Soaking	Soaking Only	N/A
	Pure Air®	Blower
Whirlpool	Motor/Pump	120V 15A
	Heater (Optional)	120V 15A

**KEY DIMENSIONS**

\*Deck width reflects only area indicated on detail.

**NOTE:** Drawing not to scale

\*\*Left Drain/Right Side Pump Whirlpool model shown



©2022 Jacuzzi Luxury Bath • For additional information, call Customer Service 800-288-4002 • [www.jacuzzi.com/baths](http://www.jacuzzi.com/baths)  
 Refer to installation instructions included with fixture before beginning installation. Please confirm product availability and specifications before commencing with any installation work.

PRODUCT SPECIFICATIONS AND AVAILABILITY ARE SUBJECT TO CHANGE WITHOUT NOTICE