



Proud to design and manufacture clothing for Rescue teams

A photograph of two rescue workers in red jackets and black pants climbing a steep, snow-covered mountain slope. They are using trekking poles and carrying large blue backpacks. The background shows jagged, snow-dusted mountain peaks under a cloudy sky.

Rescue Range



“

*What do you want in high performance clothing?*

Setting up the company some thirty years ago, this was the question I asked myself. I wanted to be different, to find new solutions to old problems, to deliver the best products possible using the most modern techniques available. We did this then. We do this now. We will do this tomorrow

Our watchwords remain:  
**Innovation. Quality. Technology.**

”

**Rube** - Managing Director and Founder of Keela



# C O N T E N T S

WHO WE ARE	04
HOW KEELA WAS MADE	06
POLICE RANGE	08
ACCESSORIES	43
SIZE CHARTS	48
MANUFACTURING, SOURCING & CUSTOMISATION	50
GREEN STUFF	54
LEGACY PROJECT	56

View our full range here:



Through all degrees of weather, Rescue Teams have to rely on their clothing as well as each other to get through whatever Mother Nature throws at them. When at a high pressure rescue operation on a freezing mountain top, they need garments that can go that bit further.

From our Queens Award winning System Dual Protection extreme outerwear fabric technology to our highly innovative high wicking base layers; we offer a full range of outdoor garments that have been tried, tested and trusted by Rescue Teams across the globe.

***We've included some key styles within this brochure, but please note our full range can be seen on our website, or contact us with your requirements.***



# Committed to Quality & Innovation for Over 30 Years

## Who We Are

At Ilasco we are a 100% wholly owned manufacturer based in Britain, who have worked with the emergency services sector for over 30 years providing our specialist protective solutions to ensure you can focus on the job at hand without interruption.

We are uniquely placed to provide top-to-toe solutions for a variety of specialisations.

As a vertically integrated company we have full control over our manufacture and have access to a range of expertise; meaning our garments are reliable, innovative and produced to fit your requirements.

## What We Do

Using our knowledge of the emergency services industry we have created multiple garment ranges ideally suited for Rescue, Police, Fire, Ambulance, Military and more.

Each of these ranges has been designed to tackle the individual problems each of these services face; from ensuring flexibility for ease of movement to providing the ultimate protection from the elements.

As well as our specialised ranges we also offer a bespoke customisation service, allowing both for existing garments from our range to be altered and, if required, for an entirely new garment to be created for your unique needs.

## Why We Do It

We believe that when undertaking challenging jobs in difficult conditions, you should be able to focus fully on the task at hand and not be hindered by PPE which is not fit for purpose.

Using our expertise and approach to innovation we aim to create garments which can be relied on to perform everywhere; whether you're waiting for the call or out in an emergency situation.

Can't find a standard garment that meets your requirements? At Ilasco we pride ourselves on making uniform procurement easy, we take your requirements and provide you with innovative solutions – contact our team and allow us to turn your specification into the perfect kit.

[sales@keela.co.uk](mailto:sales@keela.co.uk) | [keelaoutdoors.com](http://keelaoutdoors.com) | [ilasco.co.uk](http://ilasco.co.uk) | +44(0)1592 777000



We've become known for pushing the boundaries of innovation, with our range of testing machinery and skilled teams of machinists, designers and engineers.

Over 2020/21, our **UK Manufacturing** site expanded as we committed to the production of over 750,000 gowns to hardworking NHS staff. In 2022, we felt very proud to receive a UK Government Early Day Motion for our Covid efforts, along with a Civic Award.

Over the decades, we have always been keen to support staff with disabilities and disadvantages- finding what people are great at and supporting individuals to improve their skills is important to us. In 2022, we decided to make this official, and we are thrilled to be recognised as a **Supported Business** by BASE, which means that over 30% of our UK manufacturing workforce have a disability or a disadvantage.

More recently, we were thrilled to be awarded for our **Legacy Project**, which includes 7 areas which can increase the lifespan of your kit through ways such as repairing, recycling and repurposing. The Legacy Project is the latest outcome of our long-term commitment to UK manufacturing, sustainability and protection of the environment, which we've been embracing for over three decades.

*[Read more about our Legacy Project on page 72](#)*

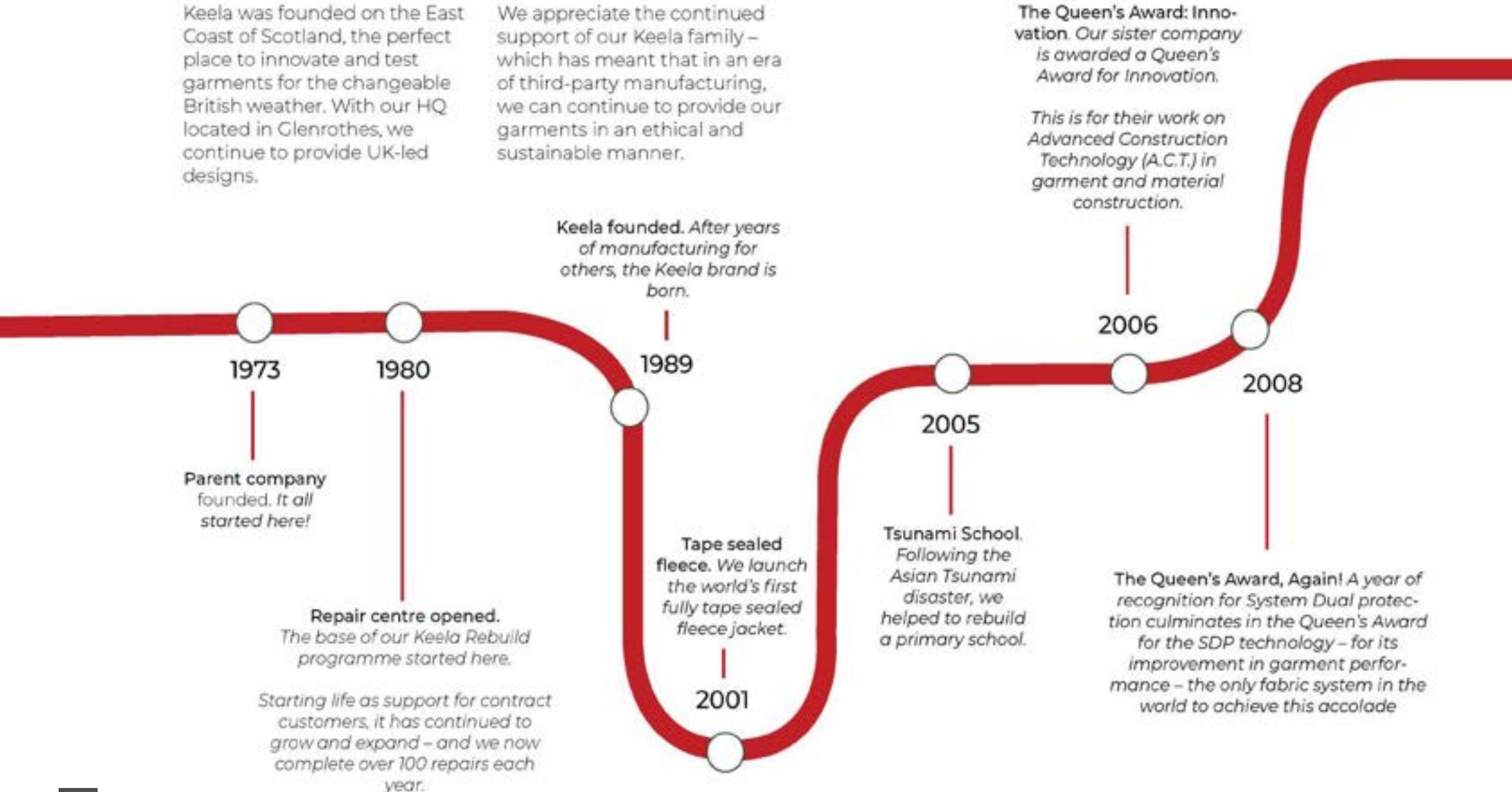


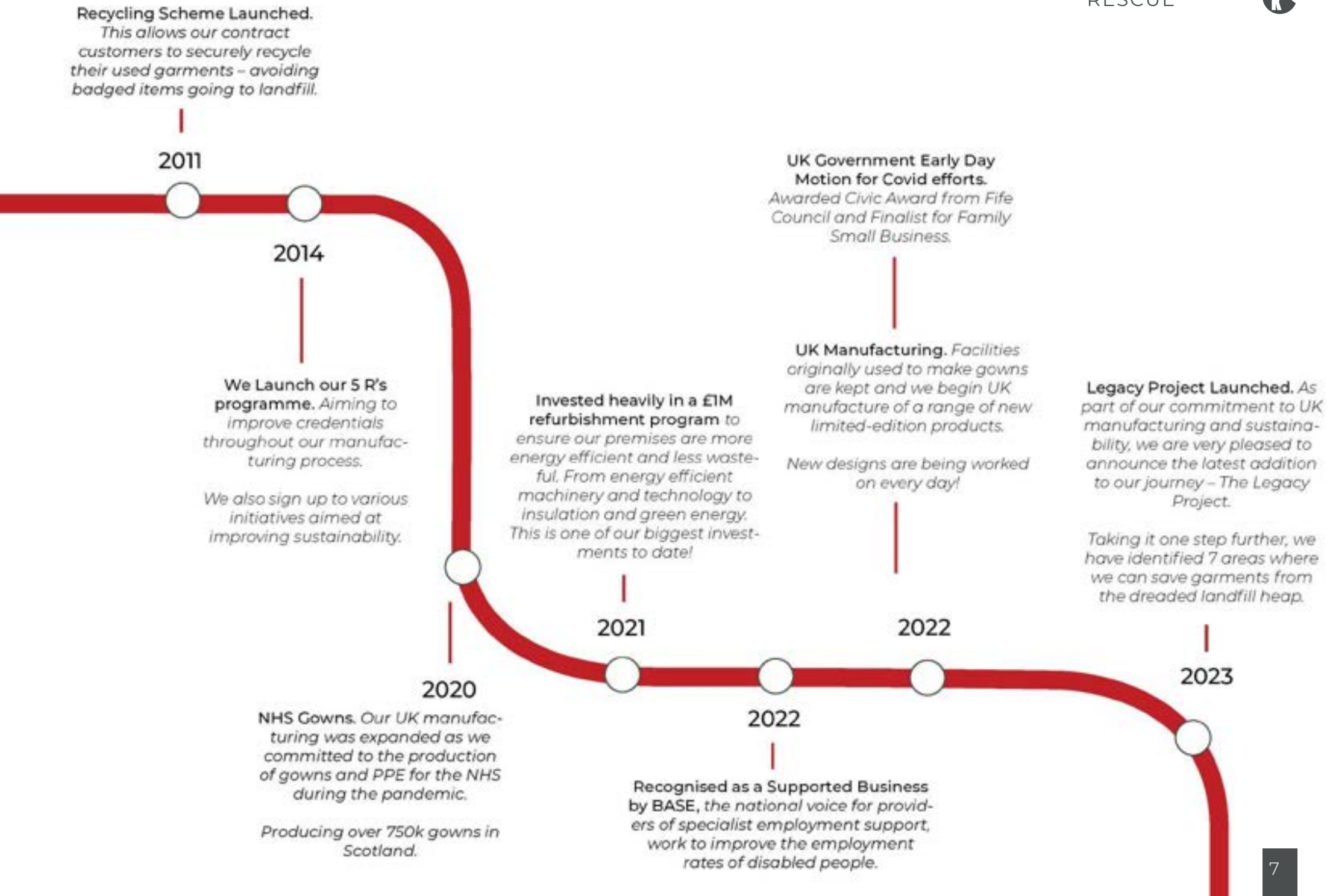
# How Keela Was Made

## Trusted by Professionals for over 30 years.

Keela was founded on the East Coast of Scotland, the perfect place to innovate and test garments for the changeable British weather. With our HQ located in Glenrothes, we continue to provide UK-led designs.

We appreciate the continued support of our Keela family – which has meant that in an era of third-party manufacturing, we can continue to provide our garments in an ethical and sustainable manner.





# OUTER-SHELL RANGE

We've got everything from durable waterproof jackets suitable for the most extreme weather, to lightweight outer shell jackets, perfect for hiding in your pack until they're needed.



Customisation and team badges are available, find out more on page 69

*Contact us now for further details and information on our Keela Rescue Head to Toe Deals*

*e: [sales@keela.co.uk](mailto:sales@keela.co.uk)*





## Stratus Jacket

00030

Rugged waterproof and breathable hard shell for mountain professionals.

Designed for Rescue teams and professionals working in challenging conditions, our Stratus Jacket is the perfect choice for anyone looking for reliable, heavy-duty protection in the very worst weather.

### FEATURES

- Mountain Rescue Team specific features
- System Dual Protection (SDP) technology
- Generous Explorer Fit allows room for layering
- 3M Reflective highlights for low-light visibility on red colourway
- Fixed hood with volume adjuster and generous peak
- Two-way front zip with double storm flap, gusset and snap closure
- Two chest pockets with zip closures and integral D-rings
- Two hip pockets
- Easy-access forearm pocket – ideal for a ski pass, or if you're in a rescue team, a pair of medical gloves!
- Secure, concealed OS map pocket
- Concealed media pocket
- Pen loop on red colourway
- Articulated sleeves
- Underarm ventilation zips with double storm flaps
- Adjustable cuff tabs with gussets
- Adjustable shock cord at hem and hood

**FABRIC:** Innovation 10

**LINING:** ADS Laminate

**SIZES:** XS - 3XL

System  
**Dual**  
Protection®

*Customisable - MOQ's may apply*

*Read more about System Dual Protection on page 11*



Waterproof



Windproof



Condensation  
Control



Breathable



## Women's Stratus Jacket

49500

Rugged waterproof and breathable hard shell for mountain professionals, now available in a women's fit.

Designed for Rescue teams and professionals working in challenging conditions, our Stratus Jacket is the perfect choice for anyone looking for reliable, heavy-duty protection in the very worst weather.

### FEATURES

- Mountain Rescue Team specific features
- System Dual Protection (SDP) technology
- 3M Reflective highlights for low-light visibility on red colourway
- Fixed hood with volume adjuster and generous peak
- Two-way front zip with double · storm flap, gusset and snap closure
- Two chest pockets with zip closures and integral D-rings
- Two hip pockets
- Easy-access forearm pocket – ideal for a ski pass, or if you're in a rescue team, a pair of medical gloves!
- Secure, concealed OS map pocket
- Concealed media pocket
- Pen loop on red colourway
- Articulated sleeves
- Underarm ventilation zips with double storm flaps
- Adjustable cuff tabs with gussets
- Adjustable shock cord at hem and hood



Waterproof



Windproof



Condensation  
Control



Breathable

**FABRIC:** Innovation 10

**LINING:** ADS Laminate

**SIZES:** s8 - s20

*Customisable - MOQ's may apply*

System  
**Dual**  
Protection®

*Read more about System Dual  
Protection on page 11*



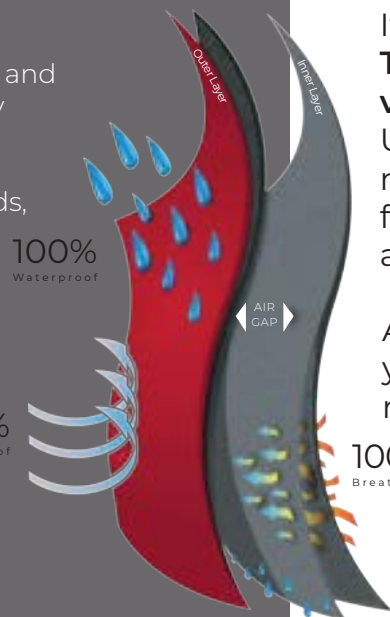
## How does our SDP system work?

The simple, no-technical explanation is that our system is waterproof and breathable, so it keeps you warm, dry and comfortable. If you're looking for the technical reasons, buckle up – here we go.

We use an outer layer and an inner layer, with an air gap in between that helps retain heat. The outer layer is breathable, the inner layer is highly wicking, which draws moisture away from your skin and into the air gap.

The combination of the air gap and wicking process regulates body temperature, minimising overheating when active and shivering during inactive periods, keeping you comfortable and safe.

It's a technology that we're justifiably proud of. And winning The Queen's Award for Enterprise: Innovation only goes to underline its importance for so many of these users across the world.



System  
**Dual**  
Protection®

## The world's only waterproof performance clothing technology that manages inner condensation in wet and cold conditions.

We're proud of the achievements of our System Dual Protection (SDP). It's the world's only waterproof performance clothing technology that manages inner condensation in wet and cold conditions. Which means it's the fabric you want next to your body when you're caught in a downpour.

It's such a good product that we received **The Queens Award for Enterprise: Innovation** in 2008. This award is one of the UK's most prestigious awards that recognises outstanding achievement in the field of international trade, innovation and sustainable development.

All these accolades mean just one thing: you can stay out for longer and remain more comfortable when you're wearing as good at keeping you dry from external elements while also keeping you dry by wicking perspiration away from your body.

“

System Dual Protection is more than just another fancy fabric brand. It's the only performance fabric in the world to be awarded a Queen's Award for Innovation and to be highly commended by the Home Office Scientific Development Branch.

”



## Munro Jacket

### 00250

Built for the harshest conditions, our Munro Jacket is a waterproof, wind-proof and highly breathable 2-layer hard shell.

Tough, abrasion-resistant fabrics and rugged reinforcements make this, our flagship jacket, the first-choice for mountain rescue teams, tactical forces and expedition climbers around the world.

### FEATURES

- System Dual Protection (SDP) technology
- Waterproof and windproof
- Highly breathable / wickable
- Condensation control
- Attached rollaway hood with wired peak
- One handed drawcord mechanism volume adjuster
- One handed drawcord neck baffle
- Inner removable snow skirt
- Reinforced shoulder panels
- Scooped back
- Underarm zipped ventilation with double stormflaps
- Pivot action sleeve
- Shock cord with cord locks at hood, waist and hem
- Chin guard
- Concealed OS map security pocket
- Two zipped chest pockets with double stormflaps
- Two lower handwarmer zipped pockets, with stormflaps
- Two way front zipper with double stormflap, Velcro closure and concealed snaps
- Velcro and elasticated adjustable cuffs
- Media pocket



Waterproof



Windproof

Condensation  
Control

Breathable

**FABRIC:** Innovation 5

**LINING:** ADS Laminate

**SIZES:** 2XS - 3XL

System  
**Dual**  
Protection®

Read more about System Dual  
Protection on page 11

Customisable - MOQ's may apply



## Women's Munro Jacket 40230

The Women's Munro Jacket is the female equivalent of the award winning Munro Jacket.

Using our System Dual Protection to reduce internal condensation by drawing the moisture away from the body with hydrophilic laminates. The Ladies' Munro is waterproof, windproof, and highly breathable.

### FEATURES

- System Dual Protection (SDP) technology
- Waterproof and windproof
- Highly breathable / wickable
- Condensation control
- Adjustable rollaway hood with wired peak
- Chin guard
- Two zipped chest pockets with stormflaps
- Two lower zipped pockets, fleece lined with stormflaps
- Concealed os map security pocket
- Media pocket
- Articulated sleeves
- Hook and loop adjustable cuffs
- Underarm zipped ventilation with double stormflaps Scooped back
- Detachable inner snow skirt
- Two way front zipper with double storm-flap, hook and loop closure and snaps
- One handed drawcord mechanism volume adjuster
- Shockcord with cord locks at hood, waist and hemand hem



Waterproof



Windproof



Condensation  
Control



Breathable

**FABRIC:** Innovation 5  
**LINING:** ADS Laminate  
**SIZES:** s8 - s20

*Customisable - MOQ's may apply*

System  
**Dual**  
Protection®

*Read more about System Dual  
Protection on page 11*



Waterproof



Windproof



Breathable

## Pinnacle Jacket

### 00510

Waterproof, windproof and breathable, the Pinnacle Jacket delivers a tough, durable and technical 3 layer hard shell with all the features you need for on the mountain. Made with our Aquaflex Extreme fabric, the Pinnacle provides uncompromising severe weather protection.

Designed for the mountain professional this jacket is your all season must have.

### FEATURES

---

- Waterproof and windproof
- Breathable
- Aquaflex Extreme 3-layer fabric - providing maximum waterproofness and breathability
- Fully adjustable helmet compatible hood
- 2 zipped hip pockets
- 2 upper pockets, map compatible
- Hem cinch cord
- Adjustable cuffs
- Under arm vents
- Reflective logo
- Water-resistant centre front zip
- Chin guard

**FABRIC:** Aquaflex Extreme

**SIZES:** XS - 3XL

**AQUAFLEX**  
E X T R E M E

*Customisable - MOQ's may apply*



Waterproof



Windproof



Breathable

## Women's Pinnacle Jacket 40510

Waterproof, windproof and breathable, the Pinnacle Jacket delivers a tough, durable and technical 3 layer hard shell with all the features you need for on the mountain. Made with our Aquaflex Extreme fabric, the Pinnacle provides uncompromising severe weather protection.

Designed for the mountain professional this jacket is your all season must have.

### FEATURES

- Waterproof and windproof
- Breathable
- Aquaflex Extreme 3-layer fabric - providing maximum waterproofness and breathability
- Fully adjustable helmet compatible hood
- 2 zipped hip pockets
- 2 upper pockets, map compatible
- Hem cinch cord
- Adjustable cuffs
- Under arm vents
- Reflective logo
- Water-resistant centre front zip
- Chin guard

**FABRIC:** Aquaflex Extreme

**SIZES:** s8 - s20

**AQUAFLEX**  
EXTREME

*Customisable - MOQ's may apply*



## Cairn Jacket

### 00500

Designed and tested in Scotland, the Cairn Jacket is a versatile multi-sport mountain jacket. It takes advantage of our innovative 3-layer Aquaflex technology to offer waterproof and windproof protection in combination with the highest levels of breathability and comfort.

Cut in our carefully tailored Active Fit, the Cairn Jacket offers unrestricted freedom of movement and a trim, flattering fit that offers comfort and protection – in equal measures.

#### FEATURES

- Waterproof, windproof and breathable multi-sport mountain jacket
- 3-layer Aquaflex technology
- Active Fit
- Fixed helmet-compatible hood with peak and volume adjuster
- Two-way front zip with inner storm flap
- Articulated sleeves for freedom of movement
- Adjustable cuff tabs
- Adjustable shock cord at hem
- Chest zipped pocket with reflective detail
- Inner chest pocket
- Two lower zipped pockets
- Water resistant zips
- Chin guard



Waterproof



Windproof



Breathable

**FABRIC:** Aquaflex

**SIZES:** XS - 3XL

AQUAFLEX

*Customisable - MOQ's may apply*





## Women's Cairn Jacket 40500

Designed and tested in Scotland, the Cairn Jacket is a versatile multi-sport mountain jacket. It takes advantage of our innovative 3-layer Aquaflex technology to offer waterproof and windproof protection in combination with the highest levels of breathability and comfort.

Cut in our carefully tailored Active Fit, the Cairn Jacket offers unrestricted freedom of movement and a trim, flattering fit that offers comfort and protection – in equal measures.

### FEATURES

- Waterproof, windproof and breathable multi-sport mountain jacket
- 3-layer Aquaflex technology
- Active Fit
- Fixed helmet-compatible hood with peak and volume adjuster
- Two-way front zip with inner storm flap
- Articulated sleeves for freedom of movement
- Adjustable cuff tabs with elastics
- Adjustable shock cord at hem
- Two lower zippered pockets
- Water resistant zips
- Chin guard



Waterproof



Windproof



Breathable

**FABRIC:** Aquaflex

**SIZES:** XS - 3XL

AQUAFLEX

*Customisable - MOQ's may apply*

# INSULATED RANGE

Whether you need a reliable warm layer, or you want a compressible jacket for sticking in your pack on colder days, our range of PrimaLoft® fill jackets has something for you.





## Talus Jacket

### 02310

The perfect mid or outer layer. The Talus Jacket features a Flylite Ultra fabric with added Cordura ripstop for strength without weight. A combination of 60gsm PrimaLoft Gold insulation for warmth, and stretchy fleece softshell side panels for increased ease of movement, makes the Talus Jacket a great core item for all year round use. It also features a technical fixed hood and malleable peak.

It's lightweight fill means it's suitable for all year round use whether as an extra thermal layer in your pack for chilly summer summits to frosty winter days. It's water resistant and windproof.

#### FEATURES

- Water-resistant
- Insulating mid or outer layer for colder conditions
- 60gsm PrimaLoft® Gold insulation
- Lower PrimaLoft® insulation in the arms means protection for your body without losing arm movement
- Stretch-fleece side panels
- Fixed hood with malleable peak and volume adjuster
- Exterior zipped chest pocket
- Twin hand pockets
- Inside chest pocket
- Articulated sleeves for extra mobility
- Shock-cord adjustment at hem and hood

**FABRIC:** Flylite Ultra with 60gsm PrimaLoft® Gold  
**SIZES:** XS - 3XL



Water  
Resistant



Windproof



Insulated

**FLYLITE**  
**ULTRA**



*Customisable - MOQ's may apply*



## Women's Talus Jacket

### 40310

The perfect mid or outer layer. The Talus Jacket features a Flylite Ultra fabric with added Cordura ripstop for strength without weight. A combination of 60gsm PrimaLoft Gold insulation for warmth, and stretchy fleece softshell side panels for increased ease of movement, makes the Talus Jacket a great core item for all year round use. It also features a technical fixed hood and malleable peak.

It's lightweight fill means it's suitable for all year round use whether as an extra thermal layer in your pack for chilly summer summits to frosty winter days. It's water resistant and windproof

#### FEATURES

- Water-resistant
- Insulating mid or outer later for colder conditions
- 60gsm PrimaLoft® Gold insulation
- Lower PrimaLoft® insulation in the arms means protection for your body without losing arm movement
- Stretch-fleece side panels
- Fixed hood with malleable peak and volume adjuster
- Twin hand pockets
- Inside chest pocket
- Articulated sleeves for extra mobility
- Shock-cord adjustment at hem and hood
- Elasticated cuffs

**FABRIC:** Flylite Ultra with 60gsm PrimaLoft® Gold

**SIZES:** XS - 3XL



Water  
Resistant



Windproof



Insulated

**FLYLITE**  
ULTRA



*Customisable - MOQ's may apply*



## Benefits:

**Warmth without bulk** – A high warmth-to-weight ratio means you don't need bulk to stay warm

**Water-resistant** – Absorbs less moisture from the start so you stay drier and warmer

**4-way stretch** – Engineered with 4-way stretch with full recovery for uncompromised freedom of movement

**Breathable** – Encourages the passage of moisture vapor to keep you from being cold or clammy

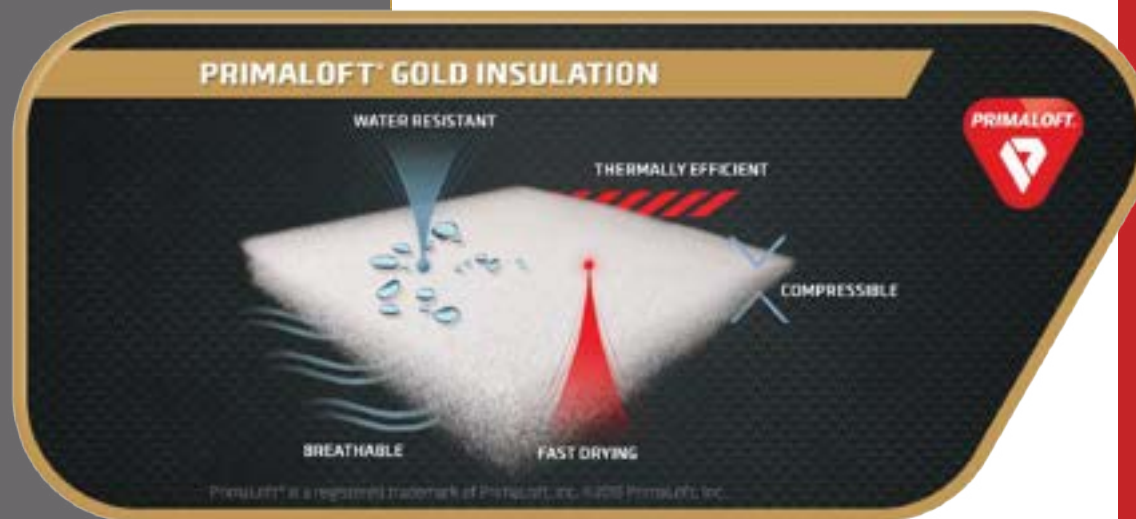
**Packable & lightweight** – Warmth without weight that packs down easily for stashing in small places

**Superior softness** – Enjoy unsurpassed softness that feels great on your body and contributes to a flattering fit



PrimaLoft is incredibly soft, lightweight and breathable with excellent water repellency so you remain dry, warm and comfortable, even under the most extreme conditions.

Ounce for ounce as warm as down, PrimaLoft microfibres are similar in size and shape to down, resulting in nearly equal insulating performance when dry and even better when wet. Because its individual fibres are water repellent, PrimaLoft retains much of its ability to keep you warm, even when moisture has soaked through.



PRIMALOFT® is a registered trademark of PrimaLoft, Inc. ©2016 PrimaLoft, Inc.



## Solo Jacket 00510

Perfect for protecting yourself from chilling winds and low temperatures, the Solo Jacket uses 133gsm PrimaLoft Gold with our Flylite Ultra durable shell.

Similar to our best-selling Talus Jacket, but loaded with a heavier weight PrimaLoft® insulation, the Solo is designed to keep you warm on crisp, icy treks. Warm, lightweight and compressible, it's the perfect mid or outer layer for your next adventure.

### FEATURES

- Water-resistant and windproof
- Insulating mid or outer later for colder conditions
- 133gsm Primaloft® Gold insulation used in body, 100gsm in sleeves
- Flylite Ultra fabric with Cordura
- Fixed hood with malleable peak and volume adjuster (Rescue Red has a helmet compatible hood)
- Inner map compatible pocket with D-ring
- Twin hand pockets with Tricot lining
- Shock-cord adjustment at hem and hood
- Half elastic cuffs with hook and loop adjustable tabs
- Scooped back



Water  
Resistant



Windproof



Insulated

**FABRIC:** Flylite Ultra with 133gsm PrimaLoft® Gold

**SIZES:** XS - 3XL

**FLYLITE**  
**ULTRA**



*Customisable - MOQ's may apply*



## Women's Solo Jacket 40320

Perfect for protecting yourself from chilling winds and low temperatures, the Solo Jacket uses 133gsm PrimaLoft Gold with our Flylite Ultra durable shell.

Similar to our best-selling Talus Jacket, but loaded with a heavier weight PrimaLoft® insulation, the Solo is designed to keep you warm on crisp, icy treks. Warm, lightweight and compressible, it's the perfect mid or outer layer for your next adventure.

### FEATURES

- Water-resistant and windproof
- Insulating mid or outer later for colder conditions
- 133gsm Primaloft® Gold insulation used in body, 100gsm in sleeves
- Flylite Ultra fabric with Cordura
- Fixed hood with malleable peak and volume adjuster
- Helmet compatible hood on Red colourway only
- Inner map compatible pocket with D-ring
- Twin hand pockets with Tricot lining
- Inside chest pocket
- Shock-cord adjustment at hem and hood
- Half elastic cuffs with hook and loop adjustable tabs
- Scooped back



Water  
Resistant



Windproof



Insulated

**FABRIC:** Flylite Ultra with 133gsm PrimaLoft® Gold

**SIZES:** s8 - s20

**FLYLITE**  
**ULTRA**



*Customisable - MOQ's may apply*



## Scree Packaway Smock 02330

Lightweight, versatile and packable, this over-the-head design provides warmth as a mid-layer or standalone using PrimaLoft Gold 60gsm. Packs neatly into the front pocket.



### FEATURES

- Water-resistant and windproof
- Packaway Kangaroo pocket
- 60gsm PrimaLoft® Gold insulation
- Flylite Ultra fabric with durable Cordura
- Two hip pockets
- Adjustable shockcord at hem
- Elasticated cuffs
- D-ring in kangaroo pocket
- Quarter length zip at front



Water Resistant



Windproof



Insulated

**FABRIC:** Flylite Ultra with 60gsm PrimaLoft® Gold

**SIZES:** XS - 3XL

**FLYLITE**  
**ULTRA**



*Customisable - MOQ's may apply*





SOFTSHELL RANGE





Water  
Resistant



Windproof



Breathable



Stretch

## Hydron Jacket 32000

Durable and technically advanced softshell jacket, offering windproof and water-resistant protection.

Using some of the most advanced technology our AirXtream Fusion fabric features a matrix inner face which regulates the movement of air and moisture away from the body; this paired with 2-way stretch and high water and wind resistance make the Hydron Softshell perfect for any teams.

### FEATURES

- Water-resistant
- Windproof
- Highly breathable
- Air Channel Matrix condensation-control inner
- Two-way stretch
- Fixed, helmet-compatible hood
- Two zipped hip pockets
- Two zipped chest pockets
- Full-length front zip with inner storm flap
- Pit zips for ventilation
- Scooped back for extra protection
- Hook-and-loop adjustable cuffs
- Shock cord with locks at hem

**FABRIC:** AirXtream Fusion

**SIZES:** XS - 3XL

**AIR**  
**X**TREAM  
FUSION

View our full mid & base layer range on our website, [ilasco.co.uk](http://ilasco.co.uk)

*Customisable - MOQ's may apply*



# Women's Hydron Jacket

## 43200

Durable and technically advanced softshell jacket, offering windproof and water-resistant protection.

Using some of the most advanced technology our AirXtream Fusion fabric features a matrix inner face which regulates the movement of air and moisture away from the body; this paired with 2-way stretch and high water and wind resistance make the Hydron Softshell perfect for any teams.

### FEATURES

---

- Water-resistant
- Windproof
- Highly breathable
- Air Channel Matrix condensation-control inner
- Two-way stretch
- Fixed, helmet-compatible hood
- Two zipped hip pockets
- Full-length front zip with inner storm flap
- Scooped back for extra protection
- Hook-and-loop adjustable cuffs
- Shock cord with locks at hem

**FABRIC:** AirXtream Advanced

**SIZES:** s8 - s20



Water Resistant



Windproof



Breathable



Stretch

*Customisable - MOQ's may apply*



## Zenith Pro Jacket

### 30810

Keela's Zenith softshell maintains the balance between lightweight, breathable mid-layer and weather defensive outer layer.

Constructed with our redeveloped AirXtream fabric with fleece backing, the Zenith ensures maximum breathability, weather resistance and is completely windproof. Flexible and highly versatile the Zenith gives maximum comfort and performance.

#### FEATURES

---

- Water resistant
- Windproof
- Breathable thermal fleece lining
- Two zippered hand warmer pockets
- Zipped chest pocket
- Underarm zipped ventilation
- Scooped back
- One way full length zip with inner stormflap
- Hook and loop adjustable cuffs
- Action pivot sleeve



Water  
Resistant



Windproof



Breathable



Stretch

**FABRIC:** AirXtream Advanced  
**SIZES:** 2XS - 3XL

**AIR**  
**X**TREAM  
ADVANCED

*Customisable - MOQ's may apply*



# Zenita Pro Jacket

## 42290

The Zenita is an ideal outer layer or when conditions get cold, a versatile mid layer.

Using our redeveloped AirXtream fabric with fleece backing the Zenita is lightweight, breathable and weather resistant making it the perfect all round softshell.

### FEATURES

---

- Water resistant
- Windproof
- Breathable thermal fleece lining
- Two zipped hand warmer pockets
- Zipped chest pocket
- Underarm zipped ventilation
- Scooped back
- One way full length zip with inner stormflap
- Hook and loop adjustable cuffs
- Action pivot sleeve

**FABRIC:** AirXtream Advanced

**SIZES:** s8 - s20



Water Resistant



Windproof



Breathable



Stretch

*Customisable - MOQ's may apply*



## Zenith Pro Gilet

### 32280

A gilet that provides, pound for pound, insulation equal to a fleece gilet, yet without the bulk.

A simplistic design with effective outcome. Maximum manoeuvrability, minimum fuss.

#### FEATURES

---

- Water resistant
- Windproof
- Breathable thermal fleece lining
- Two zipped hand warmer pockets
- Scooped back



Water  
Resistant



Windproof



Breathable



Stretch

**FABRIC:** AirXtream Advanced

**SIZES:** 2XS - 3XL

**AIR**  
**X**TREAM  
ADVANCED

*Customisable - MOQ's may apply*

## MID & BASELAYER RANGE

Our range of baselayers has something for every call out or training day – whether you're in need of something lightweight to help wick away sweat, or want a natural Merino Wool inner layer for its odour resistant properties.







## Micro Pulse Top

### 30040

The Men's Pulse will quickly become an essential part of your outdoor kit.

Lightweight for use in warmer conditions, and with excellent thermal properties for colder climates, it's perfect for use during a variety of activities.

#### FEATURES

---

- Breathable & wickable
- ½ zip at collar for ventilation
- Slight scoop at back
- Quick dry
- Easy care
- Works well as mid or base layer
- Flat lock seams; improves comfort and fit when worn as part of layering system
- Warm; high warmth to weight ratio
- Lightweight, soft and compressible for easy packing

**FABRIC:** Zetland Micro

**SIZES:** XS - 3XL



Breathable



Quick Dry



Easy Care

*Customisable - MOQ's may apply*



## Women's Micro Pulse Top 40040

This micro fleece is specially designed for women with a technical fit. The Women's Pulse will become an essential part of your outdoor kit.

Lightweight for use in warmer conditions, and excellent thermal properties for colder climates.

### FEATURES

---

- Breathable & wickable
- ½ zip at collar for ventilation
- Slight scoop at back
- Quick dry
- Easy care
- Works well as mid or base layer
- Flat lock seams; improves comfort and fit when worn as part of layering system
- Warm; high warmth to weight ratio
- Lightweight, soft and compressible for easy packing



Breathable



Quick Dry



Easy Care

**FABRIC:** Zetland Micro

**SIZES:** s8 - s20



*Customisable - MOQ's may apply*



## RADS T-shirt (with Polygiene ViralOff) 21450

Designed with rescue teams in mind, the RADS is an ideal first layer for hikers, mountaineers and anyone who needs a wicking base layer – it also includes Polygiene ViralOff™ treatment and an anti-bacterial treatment for reducing sweat smells.

The unisex RADS T shirt is designed to work in tandem with technical mid-layers and shells, while the treatment reduces viruses present on the treated fabric by 99% within 2 hours, and it also has an anti-bacterial component that stops the growth of odor-causing bacteria, eliminating sweat smells and keeping you fresher for longer.

### FEATURES

- Polygiene ViralOff™ - treatment is certified to ISO18184:2019, and achieved a 99% reduction in viruses over 2 hours.
- High wicking
- Climate control
- Easy care
- Quick dry
- Reflective Keela logo on sleeve

**FABRIC:** RADS & ViralOff

**SIZES:** s8 - s20



Breathable



Quick Dry



Easy Care

*Customisable - MOQ's may apply*



**ViralOff**  
POLYGIENE TECHNOLOGY

**RADS**  
ACTIVEWEAR



## RADS Zip Top (with Polygiene ViralOff) 20120

Designed with rescue teams in mind, the RADS Zip Top offers an alternative design to our existing RADS t-shirt. An ideal first layer for hikers, mountaineers and anyone who needs a wicking base layer – the RADS also includes Polygiene ViralOff™ treatment and an anti-bacterial treatment for reducing sweat smells.

The RADS T shirt is designed to work in tandem with technical mid-layers and shells, while the treatment reduces viruses present on the treated fabric by 99% within 2 hours, and it also has an anti-bacterial component that stops the growth of odor-causing bacteria, eliminating sweat smells and keeping you fresher for longer.

### FEATURES

- Polygiene ViralOff™- treatment is certified to ISO18184:2019, and achieved a 99% reduction in viruses over 2 hours
- ½ zip at collar for ventilation
- High wicking
- Climate control
- Easy care
- Quick dry
- Reflective Keela logo on sleeve

**FABRIC:** RADS & ViralOff

**SIZES:** 2XS - 3XL



Breathable



Quick Dry



Easy Care

*Customisable - MOQ's may apply*



**ViralOff**  
POLYGIENE TECHNOLOGY

**RADS**  
ACTIVEWEAR



## Women's RADS Zip Top (with Polygiene ViralOff) 40120

Designed with rescue teams in mind, the RADS Zip Top offers an alternative design to our existing RADS t-shirt. An ideal first layer for hikers, mountaineers and anyone who needs a wicking base layer – the RADS also includes Polygiene ViralOff™ treatment and an anti-bacterial treatment for reducing sweat smells.

The RADS T shirt is designed to work in tandem with technical mid-layers and shells, while the treatment reduces viruses present on the treated fabric by 99% within 2 hours, and it also has an anti-bacterial component that stops the growth of odor-causing bacteria, eliminating sweat smells and keeping you fresher for longer.

### FEATURES

- Polygiene ViralOff™ - treatment is certified to ISO18184:2019, and achieved a 99% reduction in viruses over 2 hours
- ½ zip at collar for ventilation
- High wicking
- Climate control
- Easy care
- Quick dry
- Reflective Keela logo on sleeve

**FABRIC:** RADS & ViralOff

**SIZES:** 2XS - 3XL



Breathable



Quick Dry



Easy Care

*Customisable - MOQ's may apply*



**ViralOff**  
POLYGIENE TECHNOLOGY

**RADS**  
ACTIVEWEAR



## CADS Polo Shirt 20120

The ultimate wickable fabric base layer. The fabric is highly breathable and offers super-fast evaporation.

Years of research and development have created Carbonised Active Dispersal System – C.A.D.S. – the ultimate wickable fabric base layer.

This specially constructed yarn network rapidly draws moisture away from the body and disperses it over a large area for super fast evaporation into the surrounding atmosphere.

### FEATURES

---

- Anti-Microbial
- High wicking
- UV protection
- Quick drying
- Relaxed fit
- Button Collar
- Climate control
- Easy care

**FABRIC:** CADS  
**SIZES:** 2XS - 3XL



Breathable



Quick Dry



Easy Care

*Customisable - MOQ's may apply*





The ultimate wickable fabric base layer. The fabric is highly breathable and offers super-fast evaporation.

Years of research and development have created Carbonised Active Dispersal System – C.A.D.S. – the ultimate wickable fabric base layer.

This specially constructed yarn network rapidly draws moisture away from the body and disperses it over a large area for super fast evaporation into the surrounding atmosphere.

## FEATURES

---

- Anti-Microbial
- High wicking
- UV protection
- Quick drying
- Relaxed fit
- Button Collar
- Climate control
- Easy care



Breathable



Quick Dry



Easy Care

*Customisable - MOQ's may apply*





We've been working with Rescue teams for over 30 years, and in that time have built up a collection of knowledge on what kit works best.

## What is a layering system?

In the simplest terms, a layering system is using multiple items of clothing to keep you warm and dry, rather than one thick layer.

A standard layering system is made up of a **base layer**, **mid layer** and **outer layer**; although you can add additional layers or take them away as needed.

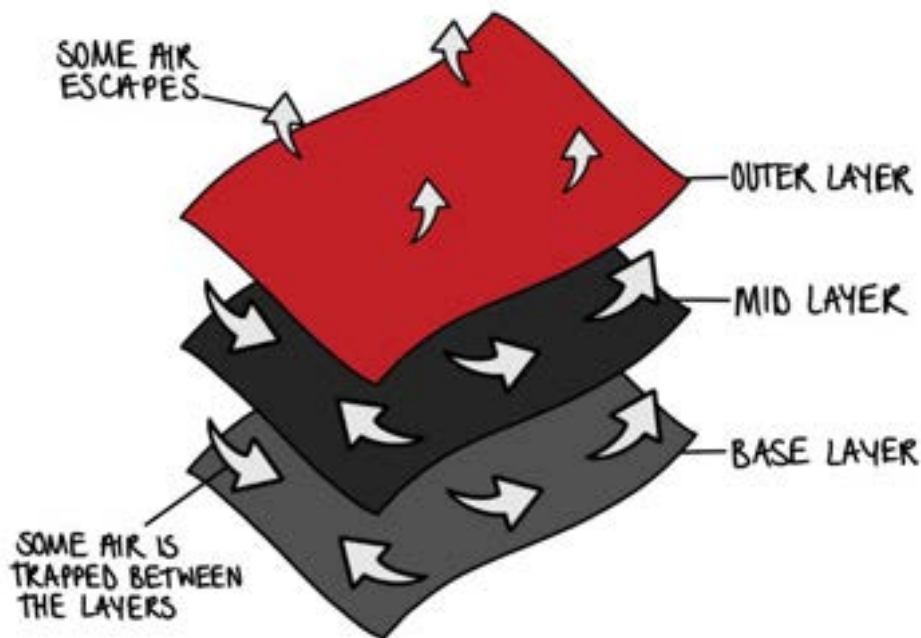


## Why are multiple layers better than one?

The way your clothing keeps you warm is by trapping a layer of warm air between you and it, which then acts as insulation.

When you have more than one layer on this creates multiple air layers which trap the warm air, this provides efficient insulation as when the air escapes from your innermost air layer it then gets trapped at the next one instead of escaping straight out.

If you were to just wear one layer (even if this was your biggest, thickest jacket) that one air gap can't hold as much warm air, and doesn't provide as much of a barrier to stop the warm air escaping.





## Mid & Base Layers

With such a range of situations that can be encountered, we have developed a full range of garments designed to ensure comfort; whether lots of warmth is required for working in cold conditions or good wicking properties to stay cool in warmer weather.



View the full range on our website



1. Men's Skye Pro Fleece (31260), also available in women's
2. Men's Micro Pulse Top (30040), also available in women's
3. Mocha Adv. Zip Top (30150, unisex)
4. Men's ADS T-shirt (21410)
5. Women's CADS Poloshirt (46280), also available in men's
6. Men's Merino L/S Zip Neck Top (29100), also available in women's
7. Men's Merino L/S Round Neck Top (29105)
8. Women's Merino L/S Round Neck Top (49105)
9. Men's Merino Leggings (19040)
10. Women's Merino Leggings (49040)

A close-up photograph of a person's legs wearing dark grey, technical outdoor trousers. The person is standing in a grassy field, and rain is falling around them, creating a misty atmosphere. The trousers have a textured, possibly waterproof or water-resistant fabric. The person's hand is visible at the top, holding the waistband area.

# TROUSERS

From our Queens Award winning System Dual Protection extreme outerwear fabric technology to our durable Stretch-Tec fabric range, we offer a range of trousers that have been tried, tested and trusted by Mountain Rescue Teams across the globe.



## Munro Pro Salopettes

14185

A high specification mountaineering salopette constructed from our advanced System Dual Protection technology.

As used by Mountain Rescue Teams and Tactical Forces, our innovation range of fabric is developed for the highest hills and mountains, developed to be the last word in high end waterproof and breathable performance fabric. Our Munro Pro Salopettes use a combination of Innovation 5 fabric and our award winning SDP lining to give you ultimate protection against the elements.

### FEATURES

- Waterproof & windproof
- Highly breathable/wickable
- Condensation control
- One vertical water resistant zipped chest pocket
- Articulated reinforced knee
- Reinforced seat and inner ankle
- Elasticated back with Velcro adjuster
- Hook and loop adjuster at ankle
- Inner ankle with non-slip rubber snow gaiter
- Elasticated fully adjustable braces
- Two way full length leg zippers with stormflap and hook and loop closure
- Full length front opening with 2-way zip for use as a fly – with flap cover and press stud closure at top
- Fully lined

**FABRIC:** Innovation 5

**SIZES:** 2XS - 3XL (short, regular, long)

*Customisable - MOQ's may apply*

System  
**Dual**  
Protection®

*Read more about System Dual  
Protection on page 11*



Waterproof



Windproof



Condensation  
Control



Breathable



# Alpine Advance Trousers

14190

Standing on the top of a mountain without a care in the world is what mountaineering is all about – Reaching the top.

With System Dual Protection technology, these mountaineering trousers will help you get there.

## FEATURES

---

- Waterproof & windproof
- Highly breathable/wickable
- Condensation control
- Waist belt hoops
- Side hook and loop tab waist adjuster
- Reinforced seat and inner ankle
- Hook and loop tab adjuster at ankle
- Half elasticated back rise
- One rear pocket
- Reinforced articulated knee
- Detachable braces attachment (Braces sold separately)
- Inner non-slip rubber snow gaiters
- Two way full length leg zippers with stormflap and hook and loop closure

**FABRIC:** Innovation 5

**LINING:** ADS Laminate

**SIZES:** 2XS - 3XL (short, regular, long)

*Customisable - MOQ's may apply*



*Read more about System Dual Protection on page 11*



Waterproof



Windproof



Condensation Control



Breathable



## Iona Advance Trousers

### 44201

Comfort and performance are combined in the Ladies' Iona Advanced Trousers.

These Ladies' trousers have been designed so that you can climb the tallest mountain without having to worry about comfort or movement.

Utilising System Dual Protection fabric technology, as used by Mountain Rescue Teams around the world, they make the perfect winter trousers.

### FEATURES

- Waterproof & windproof
- Highly breathable/wickable
- Condensation control
- Waist belt hoops
- Side hook and loop tab waist adjuster
- Reinforced seat and inner ankle
- Hook and loop tab adjuster at ankle
- Half elasticated back rise
- One rear pocket
- Reinforced articulated knee
- Detachable braces attachment (Braces sold separately)
- Inner non-slip rubber snow gaiters
- Two way full length leg zippers with stormflap and hook and loop closure

**FABRIC:** Innovation 5

**LINING:** ADS Laminate

**SIZES:** 2XS - 3XL (short, regular, long)

*Customisable - MOQ's may apply*

System  
**Dual**  
Protection®

*Read more about System Dual Protection on page 11*



Waterproof



Windproof



Condensation Control



Breathable



# Lightning Pro Trousers 11000

Tough, durable and suitable for a wide range of outdoor activities, the Lightning Pro Trousers are waterproof and lightweight, making them the perfect pack away trouser. Featuring fully taped seams to keep you dry and reflective trims throughout for good visibility.

Designed using our Rainlife 2000, a recycled waterproof and breathable wicking ripstop Nylon, which protects from the elements, keeping you dry and comfortable during any multi-sport activity.

## FEATURES

---

- Waterproof & windproof
- Lightweight & easy to pack away
- Elasticated waistband with shockcord adjustment
- Reinforced seat
- Velcro and welt adjustment on bottom leg
- Reflective design on welt
- Half leg zippers with gusset

**FABRIC:** Rainlife 2000

**SIZES:** W28 - W44 (short, regular, long)



*Customisable - MOQ's may apply*



Waterproof



Windproof



Breathable



## Scuffer Trousers

### 14500

Rugged trousers for all-mountain use.

Heavy-duty trousers, with a four-way stretch, offering durability, comfort, breathability and reassuring protection from wind, showers and snow

### FEATURES

- Heavy-duty
- Four-way stretch for freedom of movement
- Water-repellant
- Wind resistant
- Highly breathable
- High wicking
- Two zipped side pockets
- Additional security pocket inside side pocket
- Rear pocket
- Side ventilation zips
- Reinforced seat
- Ankle reinforcements
- Zipped front fly with snap fastening
- Adjustable ankle zips with hook-and-loop tab
- Removable webbing belt

**FABRIC:** Stretch-Tec Advance

**SIZES:** 2XS - 3XL (short, regular, long)

Available in Black, Navy & Iron



*Customisable - MOQ's may apply*

[View our full range of trousers on our website.](#)



Breathable



Quick Dry



Stretch



## Women's Scuffer Trousers

### 44210

The Women's version of the popular Scuffer trousers with a slim fit. A hybrid fabric that uses a mechanical 'Push/Pull' function with 4 way stretch to ensure comfort and ease of movement.

Combined with a durable design featuring reinforced seat area; the Scuffer trousers were designed to be robust for use in a variety of scenarios.

### FEATURES

---

- Ladies slim fit trouser
- Water repellent
- Wind resistant
- Highly breathable and wickable
- Quick-dry four-way stretch fabric allows for ease of movement
- Two hip pockets
- One back pocket with invisible zip
- Side leg ventilation
- Belted waist with belt loops
- Zipped front fly with 2 snap fastenings on waistband
- Zip and hook and loop tab at ankle for adjusting

**FABRIC:** Stretch-Tec Advance

**SIZES:** s8 - s20 (short, regular, long)

Available in Black, Navy & Iron



*Customisable - MOQ's may apply*



Breathable



Quick Dry



Stretch







## Nevis Trousers

### 14360

The Nevis trouser is an extremely versatile piece of kit for your next adventure.

Using fabrics from our Stretch-Tec series the Nevis offers optimum movement with contrast reinforcement panelling at critical high use areas.

Keela Stretch-Tec fabrics are sourced for comfort and durability using superior yarns. The fabrics are easy care and the quick drying, breathable properties are well suited to this all season trekking trouser.

### FEATURES

---

- Water repellent
- Two zipped hip pockets
- One zipped back pocket
- Side leg ventilation
- Reinforced knee, seat and inner ankles
- Zipped front fly with snap fastening
- Ankle zips
- Stretch fabric allows for ease of movement

**FABRIC:** Stretch-Tec Flex

**SIZES:** W28 - 44 (short, regular, long)

Available in Night Blue & Steel

Shorts version also available - 'Bidean Shorts' (SKU: 69200)

Customisable - MOQ's may apply



Breathable



Quick Dry



Stretch



## Women's Nevis Trousers

### 44360

The Nevis trouser is an extremely versatile piece of kit for your next adventure.

Using fabrics from our Stretch-Tec series the Nevis offers optimum movement with contrast reinforcement panelling at critical high use areas.

Keela Stretch-Tec fabrics are sourced for comfort and durability using superior yarns. The fabrics are easy care and the quick drying, breathable properties are well suited to this all season trekking trouser.

### FEATURES

---

- Water repellent
- Two zipped hip pockets
- Side leg ventilation
- Reinforced knee, seat and inner ankles
- Zipped front fly with snap fastening
- Ankle zips
- Stretch fabric allows for ease of movement

**FABRIC:** Stretch-Tec Flex

**SIZES:** s8 - s20 (short, regular, long)

Available in Night Blue & Steel

Shorts version also available - 'Bidean Shorts' (SKU: 69300)

Customisable - MOQ's may apply



Breathable



Quick Dry



Stretch



## Trail Trousers (with Polygiene ViralOff)

14600

A new addition to our travel wear range, these trousers are not only designed to keep you cool and comfortable, but also include Polygiene ViralOff™ treatment.

The treatment reduces viruses present on the treated fabric by 99% within 2 hours, and it also has an anti-bacterial component that stops the growth of odor-causing bacteria, eliminating sweat smells and keeping you fresher for longer.

### FEATURES

- Polygiene ViralOff™ - treatment is certified to ISO18184:2019, and achieved a 99% reduction in viruses over 2 hours
- Lightweight
- Quick dry
- Stretch
- Slim fit
- UV protection
- 2 zipped zip pockets
- Zipped back pocket

**FABRIC:** Stretch-Tec & ViralOff

**SIZES:** W28 - W44 (short, regular, long)

*Customisable - MOQ's may apply*

View our full range of trousers, including our Insect Shield collection, on our website.



Breathable



Quick Dry



Stretch



## Women's Trail Trousers (with Polygiene ViralOff) 14600

A new addition to our travel wear range, these trousers are not only designed to keep you cool and comfortable, but also include Polygiene ViralOff™ treatment.

The treatment reduces viruses present on the treated fabric by 99% within 2 hours, and it also has an anti-bacterial component that stops the growth of odor-causing bacteria, eliminating sweat smells and keeping you fresher for longer.

### FEATURES

- Polygiene ViralOff™ - treatment is certified to ISO18184:2019, and achieved a 99% reduction in viruses over 2 hours
- Lightweight
- Quick dry
- Stretch
- Slim fit
- UV protection
- 2 zipped zip pockets

**FABRIC:** Stretch-Tec & ViralOff

**SIZES:** s8 - s20 (short, regular, long)

*Customisable - MOQ's may apply*



Breathable



Quick Dry



Stretch



## Peru Trousers

### 14390

The Peru trousers are part of our travel wear range, specifically designed to keep you cool and comfortable, wherever you are, whatever you are doing.

Using Stretch-Tec fabric with its inherent stretch and durability with the added bonus of UPF protection and quick drying properties.

### FEATURES

---

- One left hand cargo pocket
- Two hip pockets
- Back velcro pocket
- One inner left hand money pocket
- One inner right hand secret pocket
- Articulated knees
- Front fly with zip
- Elasticated waist band
- UPF Protection

**FABRIC:** Stretch-Tec

**SIZES:** W28 - W44 (short, regular, long)

*Customisable - MOQ's may apply*



Breathable



Quick Dry



Stretch



## Women's Peru Trousers

### 44550

The Women's Peru trousers are part of our travel wear range, specifically designed to keep you cool and comfortable.

Designed with a tailored cut for the female shape and using our own Stretch-Tec fabric, with its inherent stretch and durability with the added bonus of UPF protection and quick drying properties, the Women's Peru trousers are designed to be the ideal choice for any journey.

### FEATURES

---

- Two hip pockets with security pocket in right hand pocket
- One velcro closure back pocket
- Elasticated waist
- Adjustable belt
- Articulated knee
- Front fly with zip
- UPF Protection

**FABRIC:** Stretch-Tec

**SIZES:** s8 - s20 (short, regular, long)

*Customisable - MOQ's may apply*



Breathable



Quick Dry



Stretch



# HW Op Trousers

## 86380

Hardwearing and practical, the Heavyweight Operational Trousers provide comfort and durability. Combining the four way Stetch Tec fabric with a durable design the Heavyweight Operational trousers are designed to take a pounding.

Combining the four-way Stretch-Tec Advance fabric with 100% nylon ripstop fabric on the knees and ankles, the HW OP trousers are hard wearing and practical, ideal for year round close proximity searches.

### FEATURES

---

- Two hip pockets with inner security pocket
- Zipped cargo pockets on each leg
- Half elasticated waist band
- Knee and ankle patched for extra reinforcement with 100% Nylon ripstop fabric
- Zip on outside leg seam with inner stormflap
- Front fly close with zipper and waist closed with metal clip
- 3mm elastic shock cord with two hole toggle for easy adjustment
- Quick dry four-way Stretch-Tec fabric
- Same style as the LW OP Trousers, but made with a heavier fabric

**FABRIC:** StretchTec Advance

**SIZES:** W26 - W46 (short, regular, long)

*Customisable - MOQ's may apply*



Breathable



Quick Dry



Stretch





Water Repellent



Quick Dry



Wind Resistant



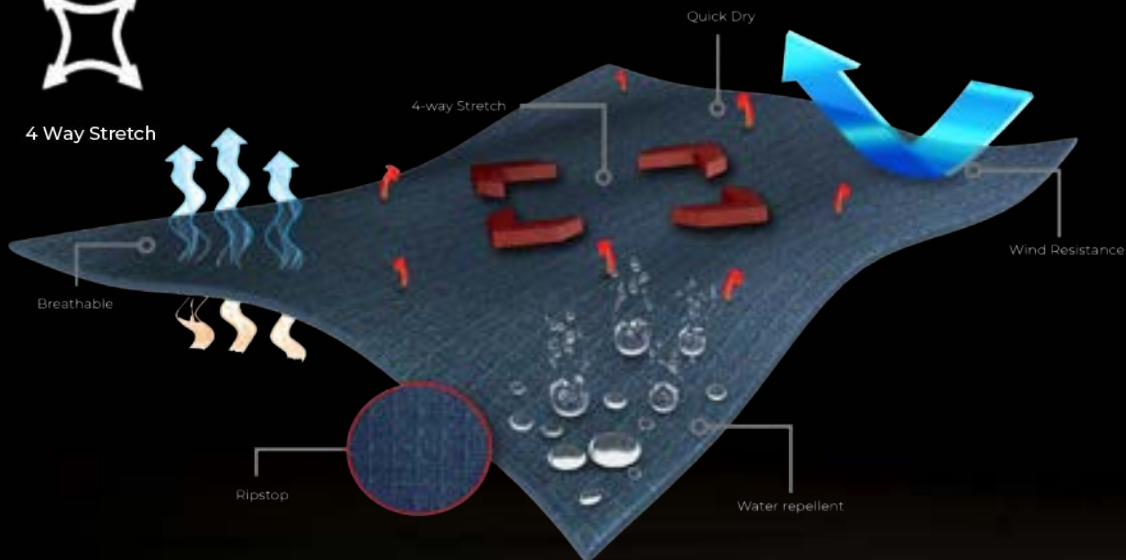
Breathable



4 Way Stretch

# STRETCH-TEC

Our Stretch-Tec fabrics are sourced for comfort and durability using superior yarns.





## Women's HW Op Trousers

### 86380

Hardwearing and practical, the Heavyweight Operational Trousers provide comfort and durability. Combining the four way Stretch Tec fabric with a durable design the Heavyweight Operational trousers are designed to take a pounding.

Combining the four-way Stretch-Tec Advance fabric with 100% nylon ripstop fabric on the knees and ankles, the HW OP trousers are hard wearing and practical, ideal for year round close proximity searches.

#### FEATURES

---

- Two hip pockets with inner security pocket
- Zipped cargo pockets on each leg
- Half elasticated waist band
- Knee and ankle patched for extra reinforcement with 100% Nylon ripstop fabric
- Zip on outside leg seam with inner stormflap
- Front fly close with zipper and waist closed with metal clip
- 3mm elastic shock cord with two hole toggle for easy adjustment
- Quick dry four-way Stretch-Tec fabric
- Same style as the LW OP Trousers, but made with a heavier fabric

**FABRIC:** StretchTec Advance

**SIZES:** s6 - s20 (short, regular, long)

*Customisable - MOQ's may apply*



Breathable



Quick Dry



Stretch



## LW Op Trousers

### 86330

The Lightweight Operational Trousers have been designed to be practical, multi-functional and easy to wear. Constructed using a lighter weight Stretch Tec fabric the LW OP trousers offer durability, UV protection and quick drying properties.

A comfortable 4 way stretch ensures comfort and performance throughout your journey. For increased durability, the knees and ankles have been rein-

#### FEATURES

---

- Two hip pockets with inner security pocket
- Zipped cargo pockets on each leg
- Half elasticated waist band
- Knee and ankle patched for extra reinforcement with 100% Nylon ripstop fabric
- Zip on outside leg seam with inner stormflap
- Front fly close with zipper and waist closed with metal clip
- 3mm elastic shock cord with two hole toggle for easy adjustment
- Quick dry four-way Stretch-Tec fabric
- Same style as the HW OP Trousers, but made with a lighter fabric



Breathable



Quick Dry



Stretch

**FABRIC:** StretchTec Advance  
**SIZES:** W26 - W44 (short, regular, long)



*Customisable - MOQ's may apply*



# ACCESSORIES



### Neck Tube (with ViralOff) 60864



Breathable



Quick Dry



Stretch

The Neck Tube is an essential addition to your kit bag – and this version includes Polyigene ViralOff™ Treatment. Highly versatile, it can be worn in an array of different ways.



### Pola Cap 60860



Waterproof



Breathable



Thermal

Combining our Rainlife 5000 outer fabric with a fleece lining, the Polacap offers complete water and wind protection.



### Merino Skull Cap 66055



Breathable



Thermal



Quick Dry

The Merino Skull Cap is lightweight with a classic cut fit which provides the wearer with the warmth and comfort needed in challenging cold weather.



### Extreme Gloves

65210



Waterproof Breathable Thermal

Featuring PrimaLoft® insulation, the Keela Extreme Glove is a close fitting, flexible and well insulated waterproof glove designed to keep you warm and dry during any activity.



### Gaiters

60810



Waterproof Breathable

Constructed to tackle the toughest terrain, the Gaiters will keep you dry and comfortable in wet terrain.

Using Innovation 5 fabric, they feature a removable nylon under strap, reinforced ripstop ankle patches, metal boot hook and draw cord calf adjustments.



### PrimaLoft® Expedition Socks 60250



Breathable Thermal Quick Dry

The PrimaLoft® Silver and Merino Wool blend offers next to skin comfort along with antibacterial, enhanced warmth and performance, wicking moisture away from skin keeping feet dry and comfortable in any activity.



### **Brace Set 61000**

Don't end up with your breeks round your ankles, support your trousers with this reliable loop brace set with clip adjusters. For use on Men's Alpine Trousers or Ladies' Iona Trousers



### **Hivis Dog Coat 62010**

The Keela High Visibility Dog Coat is perfect for keeping your dog safe in any conditions.

Fully waterproof and windproof the coat has reflective highlights so your dog can be seen in the darkest of nights



### **Technical LW Hivis Dog Coat 62020**

Developed with the input from a Search and Rescue Team, the Technical Lightweight Dog Coat is perfect for keeping your dog safe in any conditions.

We can also source other products for you out with our standard Keela range.

Please get in touch with our sales team for more information on what we can source for your requirements.

**e: [sales@keela.co.uk](mailto:sales@keela.co.uk)**

**t: 01592 777000**

View our full range of accessories on our website, including our Insect Shield range of accessories

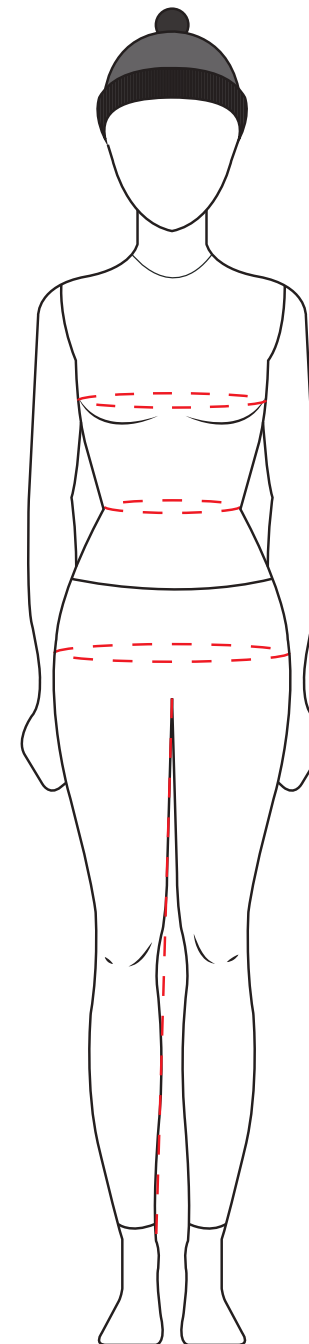


# Female Size Chart

FEMALE UPPER BODY MEASUREMENT CHART								
UK SIZE (TO FIT)		8	10	12	14	16	18	20
EU SIZE (TO FIT)		36	38	40	42	44	46	48
CHEST	INCHES	32	34	36	38	40	42	44
	CM	81	86	91	96	102	107	112
WAIST	INCHES	26	28	30	32	34	36.5	41
	CM	66	71	76	81	86	93	104
HIP	INCHES	34	36	38	40	42	44	46
	CM	86	91	96	101	107	112	117

FEMALE LOWER BODY MEASUREMENT CHART								
UK SIZE (TO FIT)		8	10	12	14	16	18	20
EU SIZE (TO FIT)		36	38	40	42	44	46	48
WAIST	INCHES	25	27	29	31	33	35	37
	CM	63	68	74	78	84	89	94
INSIDE LEG	SHORT	29"						
	REGULAR	31"						
	LONG	33"						

\* Maternity Clothing - If you require maternity uniform please contact us to discuss options



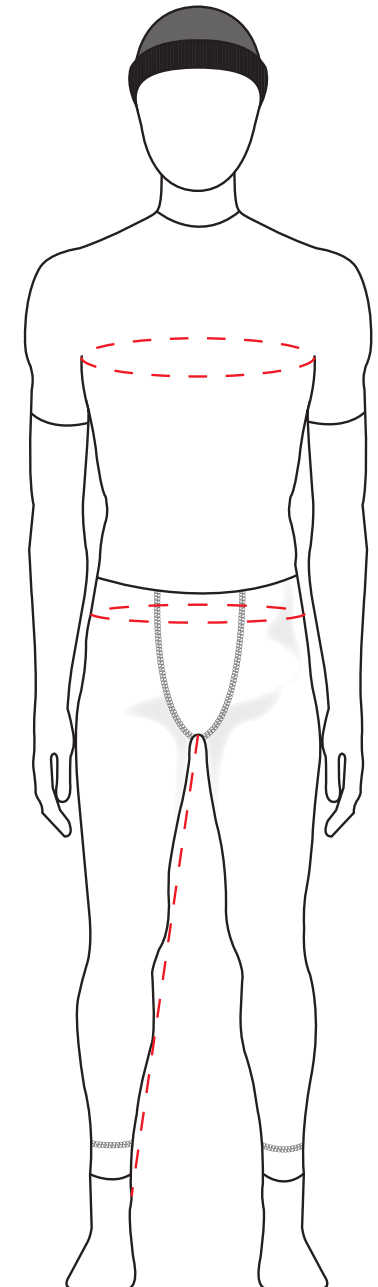




# Male Size Chart

MALE UPPER BODY MEASUREMENT CHART									
UK SIZE (TO FIT)		XXS	XS	S	M	L	XL	2XL	3XL
CHEST	INCHES	30-32	33-35	36-38	39-41	42-44	45-47	48-50	51-53
	CM	76-82	83-90	91-97	98-105	106-112	113-120	121-128	129-135
HIP	INCHES	29-31	32-34	35-37	38-40	41-43	44-46	47-49	50-52
	CM	74-79	80-87	88-95	96-102	103-110	111-118	119-125	126-133

MALE LOWER BODY MEASUREMENT CHART										
UK SIZE (TO FIT)		28	30	32	34	36	38	40	42	44
		XXS	XS	S	M	L	XL	2XL	3XL	4XL
WAIST	INCHES	28	30	32	34	36	38	40	42	44
	CM	71	76	81	86	91	96	102	107	112
INSIDE LEG	SHORT	29"								
	REGULAR	32"								
	LONG	34"								





## Manufacturing, Sourcing & Customisation

If required, we are well-equipped to facilitate alterations to existing garments within our range at our UK factory. We also have the capability to design and manufacture entirely new garments tailored to your specific requirements. (MOQs may be applicable)

In conjunction with our existing Rescue and Keela range, we are pleased to extend our services to externally source any supplementary products, allowing you to get the most out of working with Keela.

Backed by our extensive industry experience, we have dedicated teams of designers, manufacturing specialists, and experts in Research & Development. This collective wealth of knowledge empowers us to deliver an end-to-end service, spanning from the initial design phase to the eventual manufacturing of the finished product.

We offer a full range of in-house facilities, including:

- Research & Development
- Design and pattern making
- Development sampling
- Special measure service
- Manufacturing - small or large runs

*Our team of highly skilled experts have knowledge honed through decades of garment innovation, design and manufacture.*

RESCUE





## A holistic approach to your requirements

*We have the technology, know-how and capability to meet your customisation, branding and bespoke requirements, with efficient turnaround times.*

MOUNTAIN  
RESCUE



CRAFTSMANSHIP



UK MANUFACTURING FACILITIES



TESTING LABORATORY



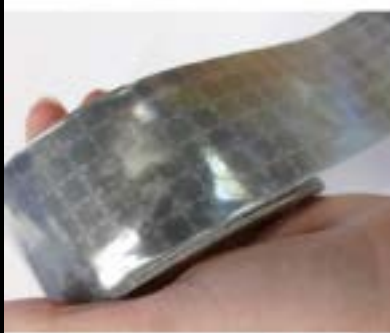
R & D FACILITIES



TECHNICAL DESIGN SUPPORT



QUALITY ASSURED



Our customisation service allows our standard garments to be altered, allowing for even greater flexibility and a garment which fits your every requirement. We offer a variety of different methods to bespoke, brand and customise your garments:

### **WATERPROOF EMBROIDERY**

Our technical expertise and use of seam-sealing tape means even after embroidery waterproof garments will remain fully waterproof

### **BADGING**

This includes a range of sizes and shapes, as well as reflective badges.

### **VELCRO REMOVABLE BADGES AND IDENTITY HOLDERS**

We can provide badges with Velcro backing and can also add Velcro patches to garments

### **CONCEALED PULL-OUT IDENTIFICATION**

More commonly used in security applications, we can provide concealed pull-out identification options for your garments.

### **RADIO DOCKETS AND LOOPS**

- TFC (Thread Free Construction) methods
- Improved cosmetic appearance
- Robust performance
- Can provide softer radio loops – suitable for use where comfort may be compromised

### **REFLECTIVE TAPE**

- Able to sew or bond on the full range of 3M or reflective tapes to our garments

### **OTHER ADDITIONS**

- Epaulettes
- Pockets - variety of small & large, internal & external

*Please note, some bespoke work, such as badges, are restricted and must be purchased with an official purchase order.*



To help us keep track of what we're doing, we keep an eye on the leaves, the branches, and the trees:



## Green Stuff

We're committed to improving our sustainability and reducing our impact on the environment in all areas – we think it's important to look to real commitment and changes and avoid just 'greenwashing' – as part of this we're also committed to helping you reduce your impacts, without you even needing to think about it!

**We are not here to preach to you – we believe this is a journey we take together.**

As a technical outdoor manufacturer, we have always been invested in ensuring we look after the planet's resources wisely. It's been the cornerstone of our DNA to ensure that we manufacture durable technical clothing responsibly and without breaking your bank balance.

That's why for over 40 years we have had our 'Clothing Hospital', a repair centre here in Glenrothes, Fife. Making products last longer and offering a repair service to prolong garments is a key factor of what we do.

**But can we do better? Of course! We can all do better.**

It's by working together that we can make a difference – even a small change made by many people can add up to a big impact. So this can include things like washing items less or at a lower temperature (which we are encouraging through changes in our care guidance) – as well as items we look at as a company, such as ensuring all of our designs are robust and can last a lifetime of adventures!

So how do we go about this? Trying to do the right thing is not always easy.

We, like others, take a measured approach using our 5 R's as our guidelines to help our team and our suppliers work towards a greener and more sustainable future without 'greenwashing'.



## Keeping it Real *The road to sustainability is a long one, but we're constantly looking to improve, and as part of our approach we follow the "5 R's".*

### Reduce

We are working to reduce waste wherever we possibly can. Whether that is by reducing our clothing pattern fabric consumption, the reduction of packaging or limiting travel abroad.

### Rebuild

Since the 80's we've had our Keela Rebuild repair programme, allowing well-loved clothing to be given a new lease of life, meaning they can be enjoyed for longer. A small tear can be enough to put a jacket to landfill, but a small repair can mean that jacket can carry on for years more.

### Recycle

Recycling is one of the easiest things we can do as a company. Where possible we recycle what we can, ensuring all areas of our workplace have recycling points; we also use recyclable packaging, and are looking to increase our use of recycled materials.

### Respect

At the basis of what we do, we ensure we have respect for all around us. A respect for the planetour resources, our team and our customers. We aim to do as much as we can, from restoring local walking paths to ensuring our supply chain is ethical and sustainable.

### React

The world of outdoor-wear is constantly changing, and we want to make sure we can be reactive to this. As more innovative fabrics and components come out, our team explore whether these could be an appropriate and more sustainable alternative for our products. Whether we are moving away from harmful chemicals, or moving towards ethical alternatives in materials, we're always looking to improve.

As part of our commitment to UK manufacturing and sustainability, we are very pleased to announce the latest addition to our journey – The Legacy Project.

Taking it one step further, we have identified 7 areas where we can save garments from the dreaded landfill heap, read more on page 30 or on our website:



# WHAT IF?

What if we repurposed our old bits of kit? What if we passed on rather than disposed of? What if we washed less and wore more? What if we mended and made do? What if we aspired to zero waste?

For over 40 years in our Keela hospital we have brought garments back from the brink of destruction. Stitching, patching, sealing, bonding and everything else we can think of – all to reunite prized possessions with their owners, so they can keep exploring for years to come. As part of our commitment to UK manufacturing and sustainability, we are very pleased to announce the latest addition to our journey – The Legacy Project. Taking it one step further, we have identified 7 areas where we can save garments from the dreaded landfill heap.

We're known for pushing the boundaries – and part of the way we do this, is by letting our designers try all sorts of different concepts!

Sometimes it's a design for a whole new style, other times we test new fabric, trims and methods of manufacture.

Whatever we discover, although not every idea is adopted into our range, it does mean there are lots of



If you've had a jacket for 5, 10, 20 years (or even longer!) it can be difficult to give it up. When your item hits the end of its life and just can't be resurrected, that's where 'Second Life' comes in to play. You send the item back to us, and our team take what fabric they can from it, and turn it into something new.

Just imagine your old waterproof jacket enjoying a second life as a gym bag for carrying your other kit! If you fancy trying your hand at remaking your items at home, you can get some ideas and guidance on our website!



We admit it – sometimes we can be real hoarders. For every product we create, we hold a 'gold seal' sample – which we use to make sure we produce the same high-quality time and time again. But as we discontinue items, where do these gold seals go? Why, we package them up and hide them in our design room of course!

But we think they deserve a better life, out on the hills where they belong – so our Archive collection is your chance to get your hands on some of our older, classic designs.

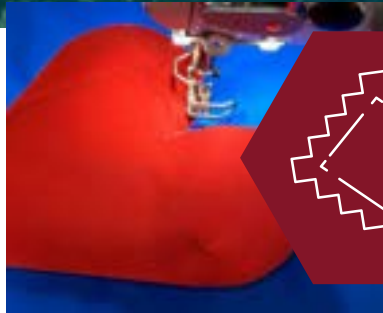
A culmination of our work in 2022, the Legacy Project has been developed to expand our ethos of keeping outdoor kit going for as long as possible, and to encourage the Keela customer to join us on our journey towards reusing, repairing and ultimately, zero waste.

To read more about the project, scan the QR code.





# Legacy Project



CLOTHING  
HOSPITAL

We have run our clothing hospital since the 1980's! Although good care can keep your kit working well for longer, there's always going to be times where you just can't avoid something going wrong.

If you find your trusty trousers or favourite jacket has a rip, tear or other malady – our team will do their best to repair it so you can go on enjoying the outdoors – so don't despair, just contact us and our team will walk you through the repairs process!

As a company we sometimes end up with a few rolls of fabric sitting waiting to be used for various different reasons. These rolls are usually enough to make 20-50 items, and we think it would be a tragedy for them to sit and gather dust, so we have committed to using these wherever possible. In some cases, we use existing designs with some special tweaks, and for certain fabrics they call for something entirely unique. These limited run items allow us to have a bit of fun – so we hope you enjoy what we come up with!



MA  
DEA  
VU



RECLAIM

Occasionally we receive back items and, for whatever reason, it hasn't gone back to its original owner, when damaged in any way we always look to repair and refurbish it, but the design may end up looking different from the original. We test the repaired garments to ensure they reach our standards, and when satisfied we can look to put them on our website. Giving you the chance to get a unique version of some of our classic designs, or a (cheaper!) refurbished version – and still with our Keela Guarantee!

Despite our best efforts, sometimes an item has been so well-loved, it just can't be saved or turned into something new. But when the time comes to say goodbye – we can provide an alternative – send your item to us and it can join our recycling programme. All items are collated and then sent to our recycling partner, to be shredded and turned into insulation (and sometimes other things!) – a more fitting end for your beloved jacket than ending up in a landfill.



RECYCLE

RESCUE

**ilasco**

[ilasco.co.uk](http://ilasco.co.uk)



**KEELA**

[keelaoutdoors.com](http://keelaoutdoors.com)

*For information on a wider range of clothing and equipment, please get in touch.*

**E-mail: [sales@keela.co.uk](mailto:sales@keela.co.uk)**

**Phone: +44(0)1592 777000**

Keela International  
52-53 Nasmyth Road  
Scotland  
KY6 2SD