

Charming Mini Chains Table Runner

Finished Quilt Size: 12.5" x 24.5"

Fabric Requirements:

1 mini charm pack (or 32 - 2.5" squares)
1 fat quarter background fabric
½ yard coordinating fabric for backing and binding

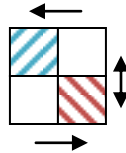
Cutting Instructions:

From your *background fabric*:

- Cut 16 - 2.5" squares (A)
- Cut 16 - 2.5" x 1.25" rectangles (B)
- Cut 8 - 2.5" x 4.5" rectangles (C)

Piecing Instructions: (all seams are ¼")

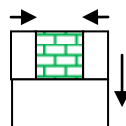
1. Choose your favorite 32 mini charm squares (2.5" squares) from your stack. Set any extras aside.
2. Using 2 mini charm squares from step one, and 2 background squares A, create the following block. Press in directions indicated by arrows. Make 8.



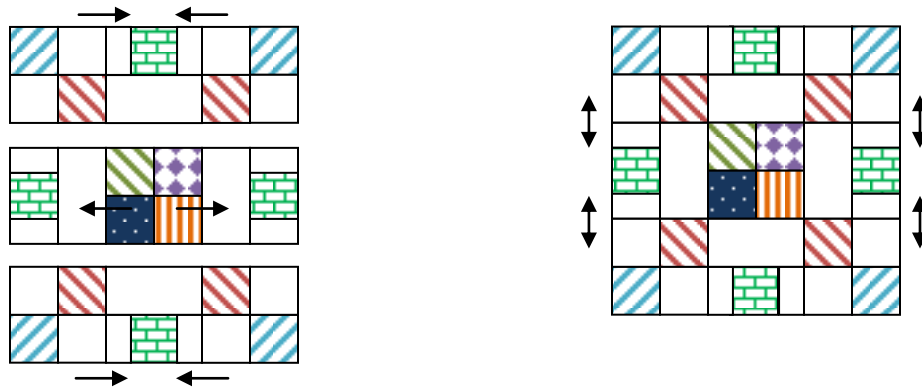
3. Using 4 mini charm squares from step one, create the following block. Press. Make 2.



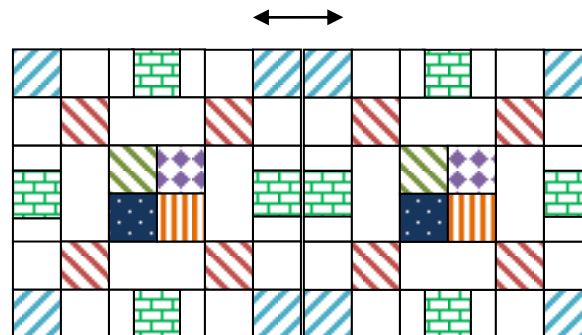
4. Using 1 mini charm square from step one, 2 background rectangles B, and 1 background rectangle C, create the following block. Press. Make 8.



5. Assemble the blocks from steps 2, 3, and 4 into rows. Then assemble the rows to create the following block. Press in directions indicated by the arrows. Make 2.



6. Combine the two blocks from step 5 to create the final table runner. Press in directions indicated by arrows.
7. Layer, quilt, and bind as desired. Enjoy!!!



NOTE: If you would like to create a square table topper/mini quilt, you will need to make two additional blocks from step 5. Finished quilt size for the table topper/mini quilt is 24" x 24".

Fabric Requirements:

- 2 mini charm packs (or 64 - 2.5" squares)
- ½ yard background fabric
- 1 yard coordinating fabric for backing and binding

Cutting Instructions:

- From your *background fabric*:
- Cut 32 - 2.5" squares (A)
 - Cut 32 - 2.5" x 1.25" rectangles (B)
 - Cut 16 - 2.5" x 4.5" rectangles (C)

**Pattern created for Loulou's Fabric Shop
by Celeste R. Harrington of Celeste Creates**

© 2015