

DF 1079-100 ASSEMBLY INSTRUCTIONS



DREWFAB
Lakeside, CA

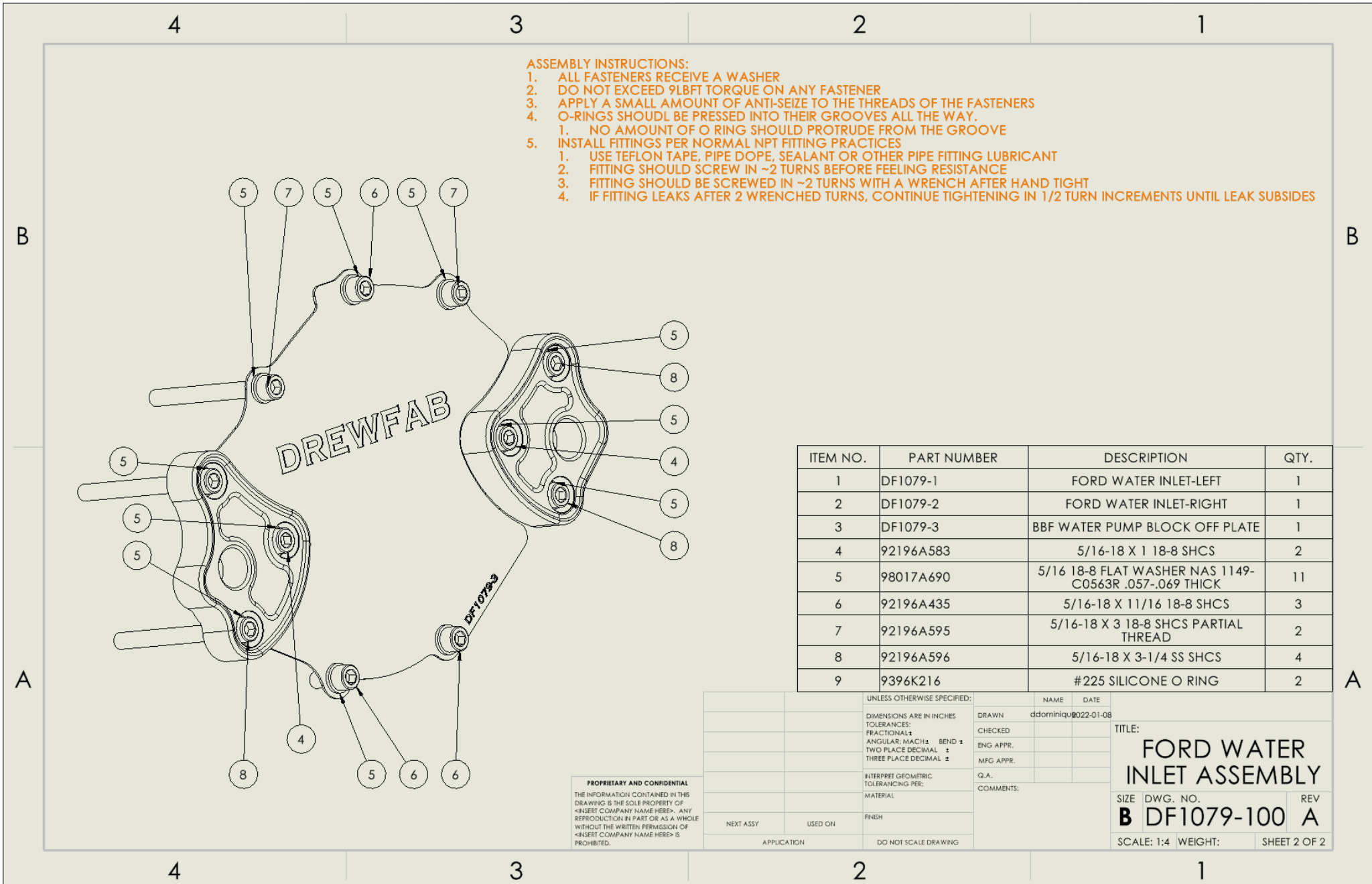
FORD 429/460 WATER INLET KIT

KIT CONTENTS

#	Part	DF1079-100	Quantity
1	92196A583	5/16-18 X 1 SS SHCS	2 Each
2	98017A690	5/16 SS FLAT WASHER NAS 1149-C0563R .057-.069 THICK	11 Each
3	9396K216	#225 SILICONE O RING	2 Each
4	92196A435	5/16-18 X 11/16 SS SHCS	3 Each
5	DF1079-3	BBF WATER PUMP BLOCK OFF PLATE	1 Each
6	DF1079-2	FORD WATER INLET-RIGHT	1 Each
7	92196A595	5/16-18 X 3 SS SHCS PARTIALLY THREADED	2 Each
8	DF1079-1	Ford Water Inlet- Left	1 Each
9	92196A596	5/16-18 X 3-1/4 SS SHCS PARTIALLY THREADED	4 Each

#	Part	DF1079-100-ARP	Quantity
1	ARP - 612-1000	5/16-18 X 1 SS 12PT	2 Each
2	98017A690	5/16 SS FLAT WASHER NAS 1149-C0563R .057-.069 THICK	11 Each
3	9396K216	#225 SILICONE O RING	2 Each
4	96242A631	5/16-18 X 3/4 SS 12 POINT BOLT	3 Each
5	DF1079-3	BBF WATER PUMP BLOCK OFF PLATE	1 Each
6	DF1079-2	FORD WATER INLET-RIGHT	1 Each
7	96242A678	5/16-18 X 3 SS 12 POINT BOLT	6 Each
8	DF1079-1	Ford Water Inlet- Left	1 Each

ASSEMBLY



ASSEMBLY INSTRUCTIONS:

1. ALL FASTENERS RECEIVE A WASHER
2. DO NOT EXCEED 9LBFT TORQUE ON ANY FASTENER
3. APPLY A SMALL AMOUNT OF ANTI-SEIZE TO THE THREADS OF THE FASTENERS
4. O-RINGS SHOULD BE PRESSED INTO THEIR GROOVES ALL THE WAY.
 1. NO AMOUNT OF O RING SHOULD PROTRUDE FROM THE GROOVE
5. INSTALL FITTINGS PER NORMAL NPT FITTING PRACTICES
 1. USE TEFLON TAPE, PIPE DOPE, SEALANT OR OTHER PIPE FITTING LUBRICANT
 2. FITTING SHOULD SCREW IN ~2 TURNS BEFORE FEELING RESISTANCE
 3. FITTING SHOULD BE SCREWED IN ~2 TURNS WITH A WRENCH AFTER HAND TIGHT
 4. IF FITTING LEAKS AFTER 2 WRENCHED TURNS, CONTINUE TIGHTENING IN 1/2 TURN INCREMENTS UNTIL LEAK SUBSIDES

ITEM NO.	PART NUMBER	DESCRIPTION	QTY.
1	DF1079-1	FORD WATER INLET-LEFT	1
2	DF1079-2	FORD WATER INLET-RIGHT	1
3	DF1079-3	BBF WATER PUMP BLOCK OFF PLATE	1
4	92196A583	5/16-18 X 1 18-8 SHCS	2
5	98017A690	5/16 18-8 FLAT WASHER NAS 1149-C0563R .057-.069 THICK	11
6	92196A435	5/16-18 X 11/16 18-8 SHCS	3
7	92196A595	5/16-18 X 3 18-8 SHCS PARTIAL THREAD	2
8	92196A596	5/16-18 X 3-1/4 SS SHCS	4
9	9396K216	#225 SILICONE O RING	2

PROPRIETARY AND CONFIDENTIAL
 THE INFORMATION CONTAINED IN THIS DRAWING IS THE SOLE PROPERTY OF <INSERT COMPANY NAME HERE>. ANY REPRODUCTION IN PART OR AS A WHOLE WITHOUT THE WRITTEN PERMISSION OF <INSERT COMPANY NAME HERE> IS PROHIBITED.

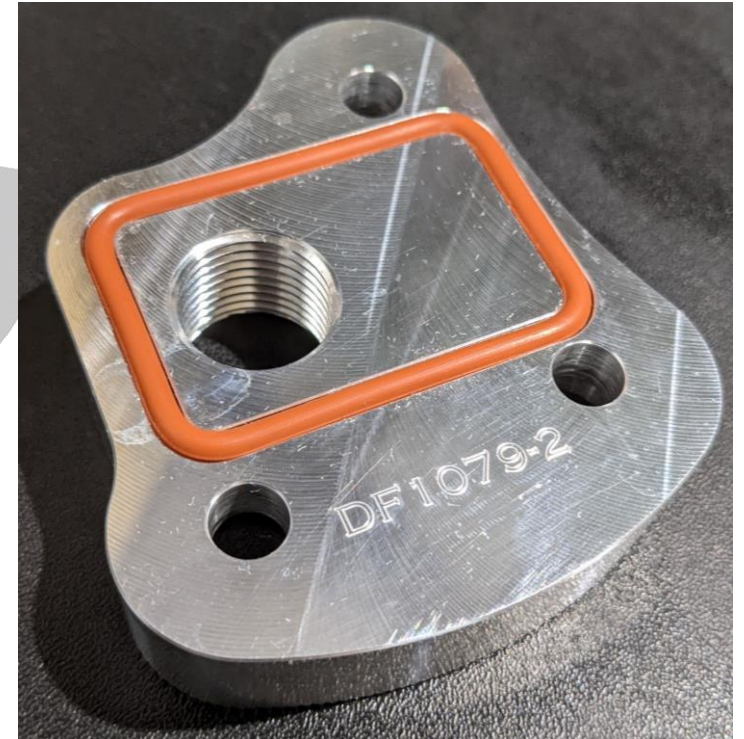
UNLESS OTHERWISE SPECIFIED:		NAME	DATE
DIMENSIONS ARE IN INCHES		ddominiqu	2022-01-08
TOLERANCES:		CHECKED	
FRACTIONAL ±		ENG APPR.	
ANGULAR: MACH ± BEND ±		MFG APPR.	
TWO PLACE DECIMAL ±		Q.A.	
THREE PLACE DECIMAL ±		COMMENTS:	
INTERPRET GEOMETRIC TOLERANCING PER:	FINISH	TITLE: FORD WATER INLET ASSEMBLY SIZE DWG. NO. REV B DF1079-100 A	
MATERIAL	APPLICATION		
DO NOT SCALE DRAWING	DO NOT SCALE DRAWING		

SCALE: 1:4 WEIGHT: SHEET 2 OF 2

O-RING ASSEMBLY

- **PUSH O-RING INTO GROOVE AS SHOWN HERE.**
- **THE O-RING SHOULD BE COMPLETELY CAPTURED BY THE GROOVE, NO AMOUNT OF O-RING SHOULD PROTRUDE FROM THE GROOVE.**

DREWFAB
Lakeside, CA



ASSEMBLY INSTRUCTIONS

- **ASSEMBLY INSTRUCTIONS:**

1. ALL FASTENERS RECEIVE A WASHER
2. DO NOT EXCEED 9LBFT TORQUE ON ANY FASTENER
3. APPLY A SMALL AMOUNT OF ANTI-SEIZE TO THE THREADS OF THE FASTENERS
4. O-RINGS SHOULD BE PRESSED INTO THEIR GROOVES ALL THE WAY.
 1. NO AMOUNT OF O RING SHOULD PROTRUDE FROM THE GROOVE
5. INSTALL FITTINGS PER NORMAL NPT FITTING PRACTICES
 1. USE TEFLON TAPE, PIPE DOPE, SEALANT OR OTHER PIPE FITTING LUBRICANT
 2. FITTING SHOULD SCREW IN ~2 TURNS BEFORE FEELING RESISTANCE
 3. FITTING SHOULD BE SCREWED IN ~2 TURNS WITH A WRENCH AFTER HAND TIGHT
 4. IF FITTING LEAKS AFTER 2 WRENCHED TURNS, CONTINUE TIGHTENING IN 1/2 TURN INCREMENTS UNTIL LEAK SUBSIDES
6. AFTER INSTALLING O-RINGS TO BOTH WATER PLATES ASSEMBLE THEM TO THE TIMING COVER USING QTY 2 EA 3-1/4" BOLTS, 3 WASHERS, AND QTY 1 1" BOLT
7. SNUG ALL 3 BOLTS EVENLY TILL YOU FEEL THE O- RING BEGIN TO COMPRESS
8. ONCE THE O-RING HAS STARTED TO COMPRESS TORQUE ALL 3 BOLTS EVENLY TO 5LBFT (60INLB)
9. AFTER TORQUING ALL 3 BOLTS TO 5LBFT PROCEED TO FINAL TORQUE, TAKE CARE TO NOT EXCEED 9LBFT, THE BOLTS WILL SNAP.
 1. NOTE, IT IS POSSIBLE THAT YOUR ENGINE HAS HOLES NOT DRILLED AS DEEP AS OTHERS, YOU MAY NEED TO TRIM THE BOLTS LENGTH A SMALL AMOUNT. CHECK THAT THE BOLTS DO NOT BOTTOM OUT BEFORE FINISHING THE ASSEMBLY. THE EASIEST WAY TO DO THIS IS TO USE A PICK (TOOTHPICK WORKS TOO) AFTER THE BOLTS ARE SNUG AND SEE IF THE WASHER MOVES UNDER THE BOLT HEAD. IF THE WASHER MOVES ITS BOTTOMING OUT, IF IT DOESN'T IT IS TIGHTENING PROPERLY.
10. REPEAT THIS PROCESS FOR BOTH WATER INLET PLATES
11. INSTALL THE BLOCK OFF PLATE USING THE QTY 3 1 1/16 (3/4" IF ARP) BOLTS FIRST, THEY THREAD INTO THE TIMING COVER.
12. SNUG THEM DOWN, THEN INSTALL THE QTY 2 3" LONG BOLTS.
13. SNUG THEM DOWN NOT EXCEEDING 9LBFT TORQUE.
14. INSTALL FITTINGS PER INSTRUCTIONS ON PAGE 3.
15. PLUMB WATER LINES.
16. HAMMER DOWN AND SMILE.