

# Pediatric Examination Table



*Model Numbers:*

**640** (all)

## Service and Parts Manual



FOR USE BY MIDMARK TRAINED TECHNICIANS ONLY

# Table Of Contents

## General Information

<b><u>GENERAL INFORMATION</u></b>	
Symbols .....	iii
Ordering Parts .....	iii
Serial Number Location .....	iii
Specifications .....	iv
Scheduled Maintenance .....	vi
Warranty Information .....	vii

## Section A

<b><u>TROUBLESHOOTING</u></b>	
Troubleshooting Chart .....	A-2

## Section B

<b><u>COMPONENT TESTING &amp; ADJUSTMENTS</u></b>	
<b>Doors / Drawer:</b>	
<i>Door Adjustment</i> .....	B-2
<i>Drawer Removal</i> .....	B-3
<b>Linear Scale:</b>	
<i>Checking Arm Alignment</i> .....	B-4
<i>Arm Adjustment</i> .....	B-4
<b>Digital Scale:</b>	
<i>Verifying Scale Accuracy</i> .....	B-5
<i>Calibration Procedure</i> .....	B-6
<i>Gravity Correction Procedure</i> ..	B-7
<i>Display Mode</i> ... ..	B-8

## Section C

<b><u>ACCESS PROCEDURES</u></b>	
(none required)	

## Section D

<b><u>WIRING DIAGRAMS</u></b>	
(none required)	

## Section E

<b><u>EXPLODED VIEWS / PARTS LISTS</u></b>	
Pictorial Index .....	E-2
Upholstered Top .....	E-3
Upperwrap Components .....	E-4
Linear Scale .....	E-5
Digital Scale .....	E-6
Cabinet Assembly .....	E-7
Doors & Drawer .....	E-8
Door / Drawer	
Lock Components .....	E-9

\* Indicates multiple pages due to model / serial number break(s)

## Symbols



### **DANGER**

Indicates an imminently hazardous situation which **will result in serious or fatal injury if not avoided. This symbol is used only in the most extreme conditions.**



### **WARNING**

Indicates a potentially hazardous situation which **could result in serious injury if not avoided.**



### **CAUTION**

Indicates a potentially hazardous situation which **may result in minor or moderate injury if not avoided. It may also be used to alert against unsafe practices.**



### **Equipment Alert**

Indicates a potentially hazardous situation which **could result in equipment damage if not avoided.**



In Section A, test the components in the order indicated. (ex. 1st ✓ then, 2nd ✓)

Refer to Section B for component testing procedures.

The symbols below may be used in this manual to represent the operational status of table functions and components.



Indicates the function / component is working properly. No action required.



Indicates the function / component is working, but a problem exists.



Indicates the function / component is not working at all.

## Ordering Parts

The following information is required when ordering parts:

- Serial number & model number
- Part number for desired part.

[Refer to Exploded Views / Parts Lists section]

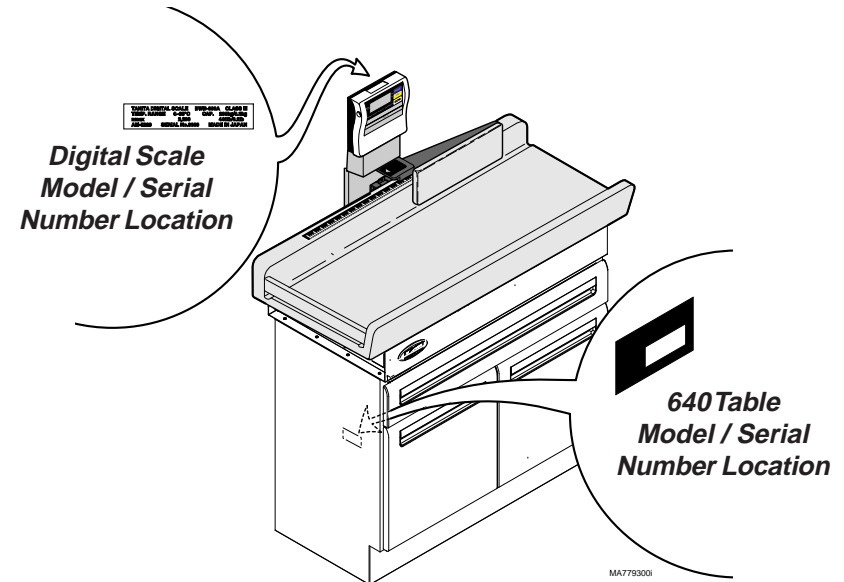
**Non-warranty parts orders may be faxed to Midmark using the Fax Order Form in the back of this manual.**

For warranty parts orders, call Midmark's Technical Service Department with the required information.

Hours: 8:00 am until 5:00 pm EST [Monday - Friday]

Phone: 1-(800)-Midmark

## Serial Number Location



# General Information

## Specifications

**Maximum Patient Weight:** ..... 40 lbs (18 kg)  
**Paper Roll (maximum size):** ..... 14 in. long x 3 in. diameter  
35.6 cm x 7.6 cm  
**Weight of Table:** ..... 170 lbs (77 kg)

### Digital Scale

#### Accuracy:

*Patients 0 to 22 lbs (0 to 10 kg)* .....  $\pm 1$  oz ( $\pm 28$  g)

*Patients 22 to 40 lbs (10 to 18 kg)* .....  $\pm 2$  oz ( $\pm 56$  g)

**Minimum Increments:** ..... 1 oz (0.01 kg)

**Type Measurement:** ..... Electrical Resistance Method

#### Power Source:

Batteries ..... six (6) AA (LR6 Alkali)

AC Adapter ..... Input: 120 VAC, 60 Hz, 5W

Output: 9 VDC, 200mA

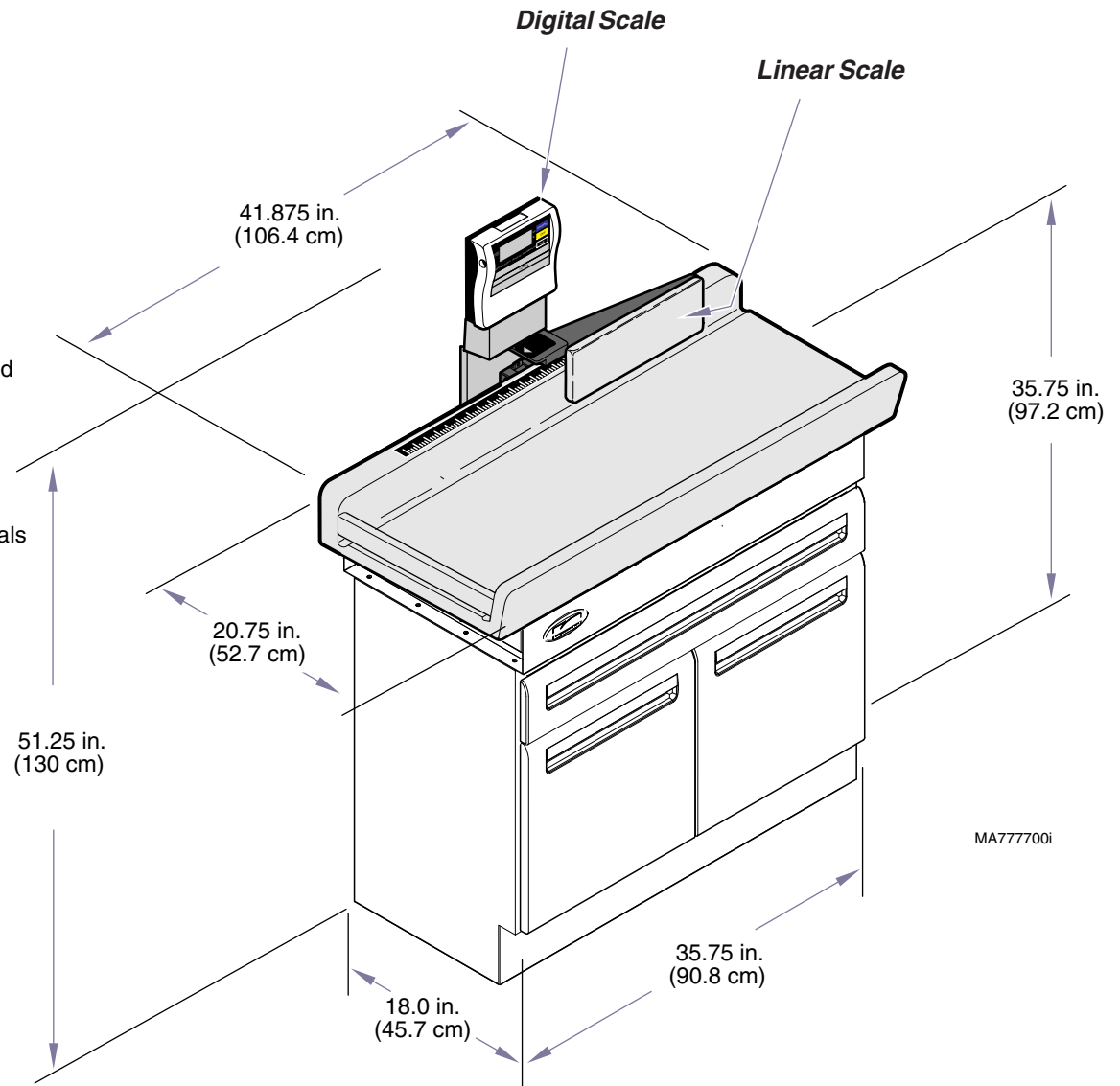
**Power Consumption:** ..... 0.25 Watts max.

**Display:** ..... LCD w/ 1 in (25 mm) numerals

### Linear Scale (Measuring Arm)

**Accuracy:** .....  $\pm 1/8$  in. ( $\pm 3$  mm)

**Minimum Increments** .....  $1/8$  in. (0.5 cm)



## Scheduled Maintenance Chart

Scheduled Maintenance 640 Pediatric Examination Table		
Interval	Inspection or Service	Service, Adjust, Repair and/or Replace as Required
Daily	Cleaning	Clean upholstery with diluted bleach solution. Ratio - 10:1 (water:bleach)
		Wipe painted metal & plastic surfaces with a clean soft cloth and mild cleaner. (NOTE: Periodic application of common furniture wax will ease cleaning, and maintain the luster of the surfaces).
	Obvious Damage	Visually inspect components for damage that could cause problems during operation or unsafe operation.
Weekly	Check accuracy of digital scale	Refer to: <b>Digital Scale - Verifying Scale Accuracy</b> (later in this manual)
Every two months	Check measuring arm alignment	Refer to: <b>Measuring Arm Alignment</b> (later in this manual)
Semi-Annually	Mechanical Operation	Check all mechanical functions for proper operation.
	Verify Table is Level	Place a level on table top. Adjust if necessary. Refer to: Leveling the Table (later in this manual).
	Labels / Decals	Replace any missing or illegible labels.
	Lubricate	Lubricate moving parts with light machine oil.
	Hardware	All fasteners must be present and fastened securely.
Date of Service:    ___ / ___ / ___ Location: Service Technician:		

# General Information

## *Warranty Information*

### **SCOPE OF WARRANTY**

Midmark Corporation (“Midmark”) warrants to the original purchaser its new Alternate Care products and components (except for components not warranted under “Exclusions”) manufactured by Midmark to be free from defects in material and workmanship under normal use and service. Midmark’s obligation under this warranty is limited to the repair or replacement, at Midmark’s option, of the parts or the products the defects of which are reported to Midmark within the applicable warranty period and which, upon examination by Midmark, prove to be defective.

### **APPLICABLE WARRANTY PERIOD**

The applicable warranty period, measured from the date of delivery to the original user, shall be one (1) year for all warranted products and components.

### **EXCLUSIONS**

This warranty does not cover and Midmark shall not be liable for the following: (1) repairs and replacements because of misuse, abuse, negligence, alteration, accident, freight damage, or tampering; (2) products which are not installed, used, and properly cleaned as required in the Midmark “Installation” and or “Installation / Operation Manual for this applicable product. (3) products considered to be of a consumable nature; (4) accessories or parts not manufactured by Midmark; (5) charges by anyone for adjustments, repairs, replacement parts, installation, or other work performed upon or in connection with such products which is not expressly authorized in writing in advance by Midmark.

### **EXCLUSIVE REMEDY**

Midmark’s only obligation under this warranty is the repair or replacement of defective parts. Midmark shall not be liable for any direct, special, indirect, incidental, exemplary, or consequential damages or delay, including, but not limited to, damages for loss of profits or loss of use.

### **NO AUTHORIZATION**

No person or firm is authorized to create for Midmark any other obligation or liability in connection with the products.

**THIS WARRANTY IS MIDMARK’S ONLY WARRANTY AND IS IN LIEU OF ALL OTHER WARRANTIES, EXPRESS OR IMPLIED. MIDMARK MAKES NO IMPLIED WARRANTIES OF ANY KIND INCLUDING ANY WARRANTIES OF MERCHANTABILITY OR FITNESS FOR ANY PARTICULAR PURPOSE. THIS WARRANTY IS LIMITED TO THE REPAIR OR REPLACEMENT OF DEFECTIVE PARTS.**

### **Additional Information**

Failure to follow the guidelines listed below will void the warranty and/or render the table unsafe for use.

- If a malfunction is detected, do not use the table until necessary repairs are made.
- Do not attempt to disassemble table, replace components, or perform adjustments unless you are a Midmark authorized service technician.
- Do not use another manufacturer's parts to replace malfunctioning components. Use only Midmark replacement parts

# Section A

## *Troubleshooting*



# Troubleshooting

## Troubleshooting Chart

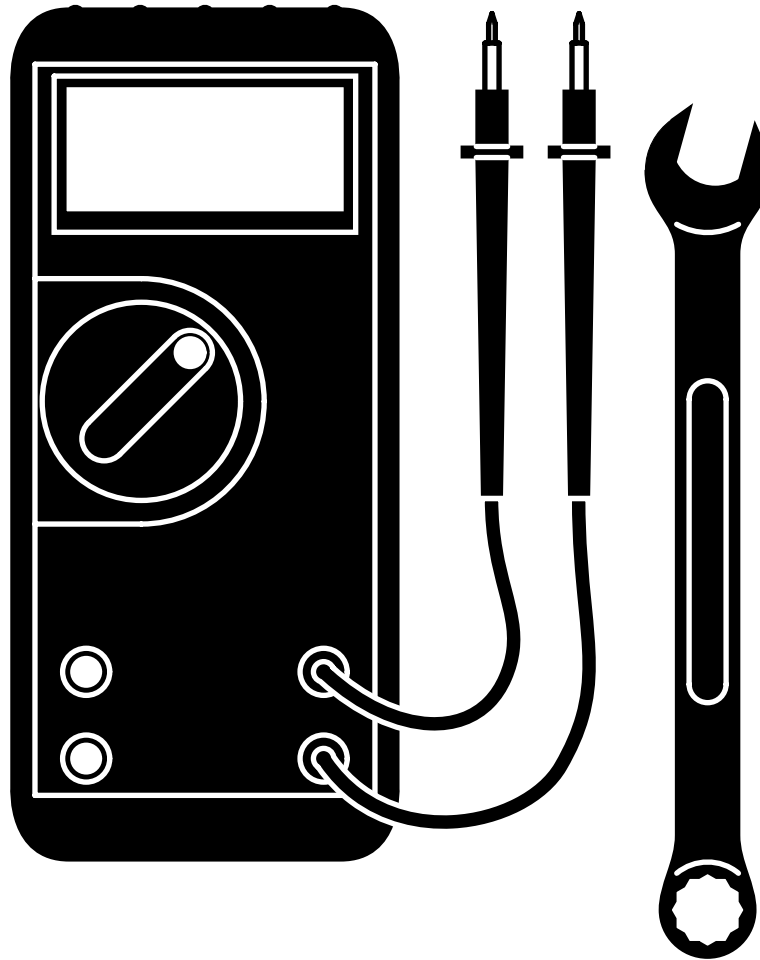
\* Only the complete digital scale assembly is available thru Midmark.  
For digital scale components, contact TANITA Corporation @ 847-640-9241

Problem	Probable Cause	Check / Test	Correction
Nothing is appears on display when the <b>ON / ZERO</b> button is pressed.	<i>(If applicable)</i> AC adapter is disconnected or malfunctioning.	Check AC adapter connections at the display and at the wall outlet.	Secure connections. If necessary, replace AC adapter*.
	<i>(If applicable)</i> Batteries are low.	Replace batteries, or use AC adapter.	Replace old batteries with six new AA batteries
	Digital display is malfunctioning.	-	Replace digital display*.
Digital display acts erratically.	Mode setting has been lost due to a power surge or replacement of digital display.	Check mode setting.	Adjust mode setting to: H8830 <i>(Refer to Section B: Digital Scale - Display Mode Setting)</i>
Digital display works, but measured weight stays at zero with weight on table.	Display harness loose or damaged. <i>(The display harness connects the digital display to the scale platform)</i>	Check display harness connections.	Secure connections. If necessary, replace display harness*.
	Scale platform is malfunctioning.	-	Replace scale platform*.
Measured weight is inaccurate.	Paper roll interfering with table top.	Check to see if paper roll is in contact with table top.	Reduce the diameter of the paper roll, or remove paper roll completely.
	Table is not level.	Place level on table top.	Adjust leveling feet as necessary.
	Table is located where excessive vibration occurs.	Check for signs of vibration at table location.	Move table to another location.
	Digital scale out of calibration.	Refer to Section B: Digital Scale - Verifying Scale Accuracy.	Calibrate digital scale. <i>(Refer to Section B: Digital Scale - Calibration Procedure)</i>
	Display harness loose or damaged. <i>(The display harness connects the digital display to the scale platform)</i>	Check display harness connections.	Secure connections. If necessary, replace display harness*.
	Diital display or scale platform malfunctioning.	-	Replace display* / platform* as necessary.
Linear scale is inaccurate.	Scale label is not positioned properly.	Measure from end of table top to scale label.	Reposition label if necessary.
	Measuring arm out of adjustment.	Refer to Section B: Linear Scale - Checking Arm Alignment.	Adjust arm as necessary.



# Section B

## Component Testing & Repair



<u>Components</u>	<u>Page</u>
Doors / Drawer:	
<i>Door Adjustment</i> .....	B-2
<i>Drawer Removal</i> .....	B-3
Linear Scale:	
<i>Checking Arm Alignment</i> .....	B-4
<i>Arm Adjustment</i> .....	B-4
Digital Scale:	
<i>Verifying Scale Accuracy</i> .....	B-5
<i>Calibration Procedure</i> .....	B-6
<i>Gravity Correction Procedure</i> .....	B-7
<i>Display Mode Setting</i> .....	B-8

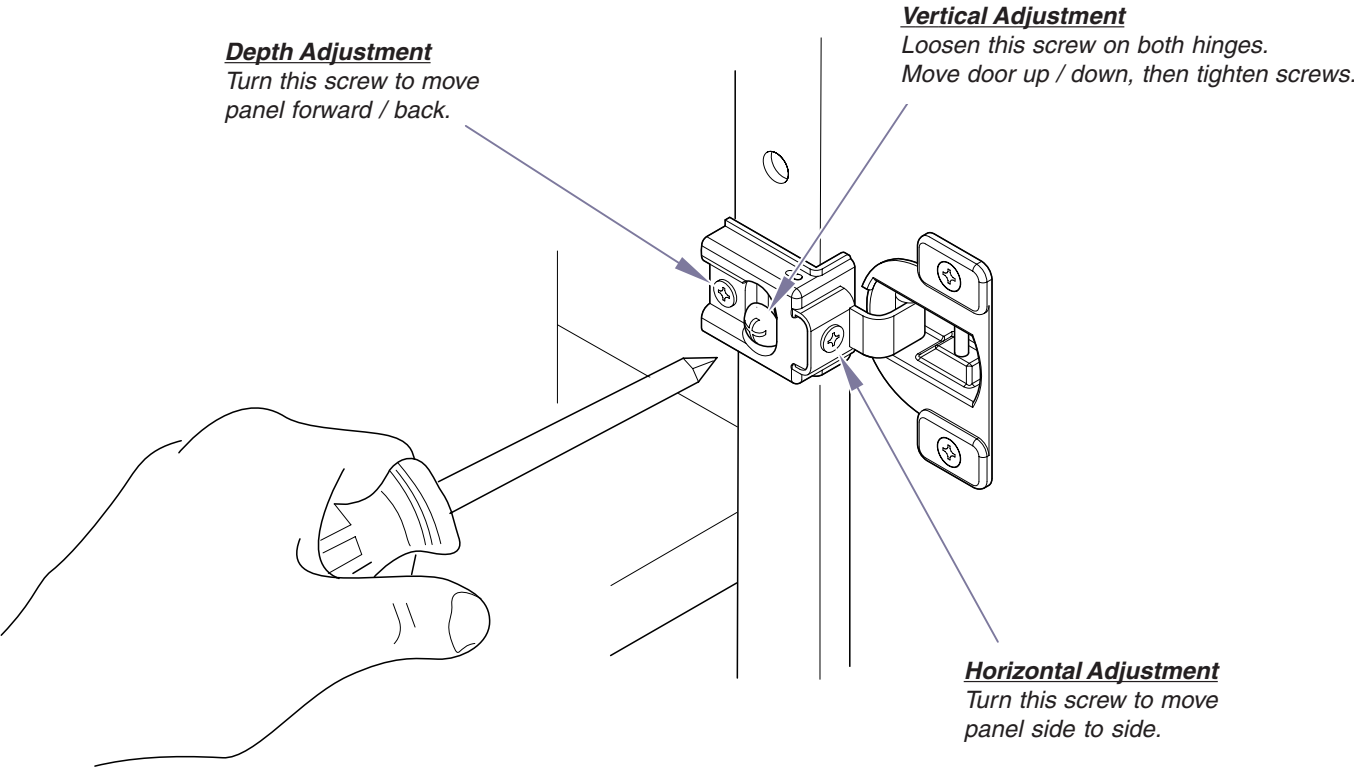
<u>www.Documark.com:</u>	<u>File Name</u>
Digital Scale Replacement* .....	003-1836-00
Upholstered Top Replacement* .....	003-1811-00

# Component Testing & Repair

## Doors / Drawer

### Door Adjustment

<u>Doors / Drawer</u>	<u>Page</u>
Door Adjustment .....	B-2
Drawer Removal .....	B-3
Exploded View / Part Numbers .....	E-8



MA77600i

## Doors / Drawer

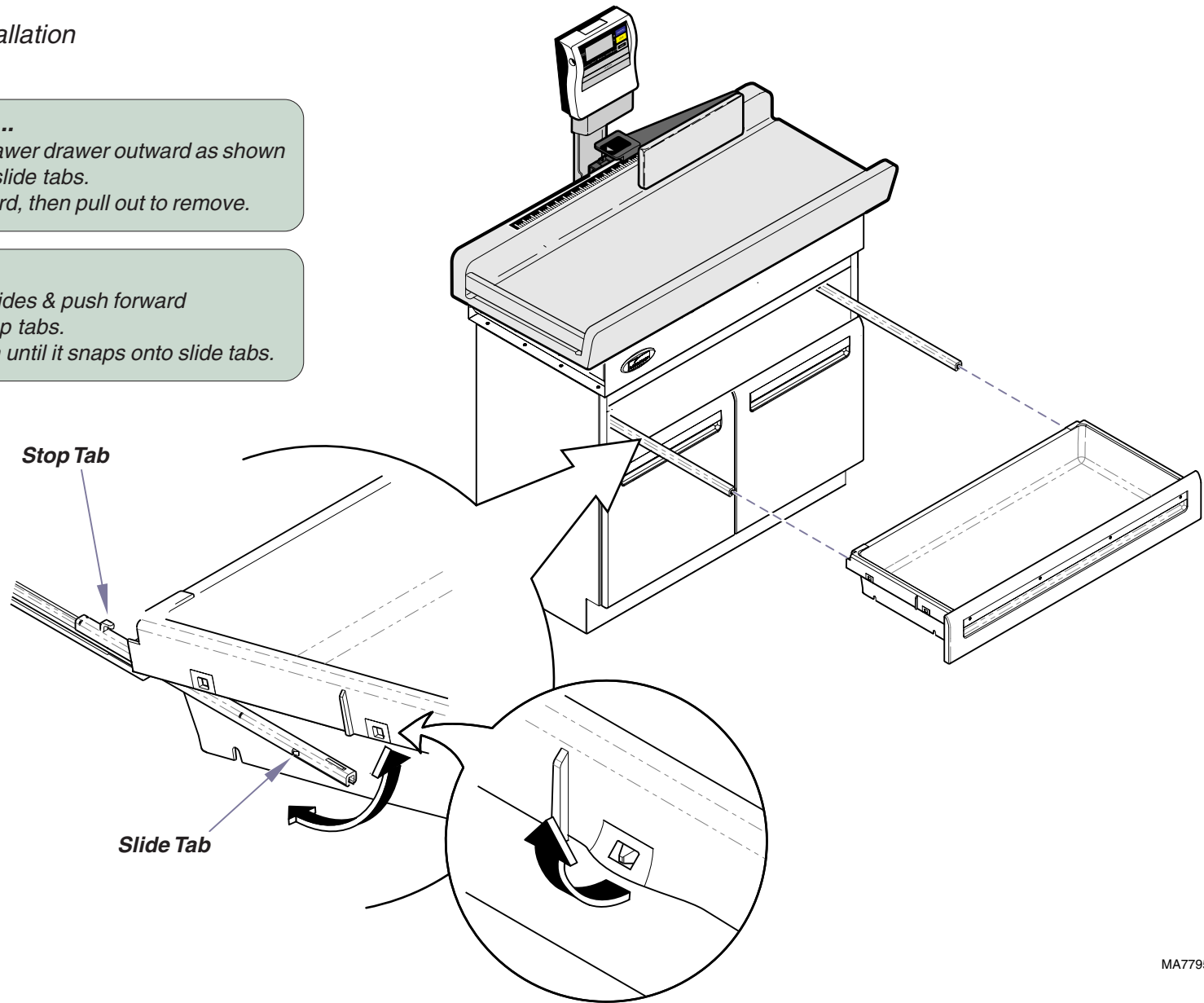
### Drawer Removal / Installation

#### To remove drawer...

- A. Spread sides of drawer outward as shown to release from slide tabs.
- B. Pivot drawer upward, then pull out to remove.

#### To install drawer...

- A. Place drawer on slides & push forward until it hits the stop tabs.
- B. Push drawer down until it snaps onto slide tabs.



MA779500i

Models:  
Serial Numbers:

ALL

Doors / Drawer

© Midmark Corporation 2007 SF-1918

# Component Testing & Repair

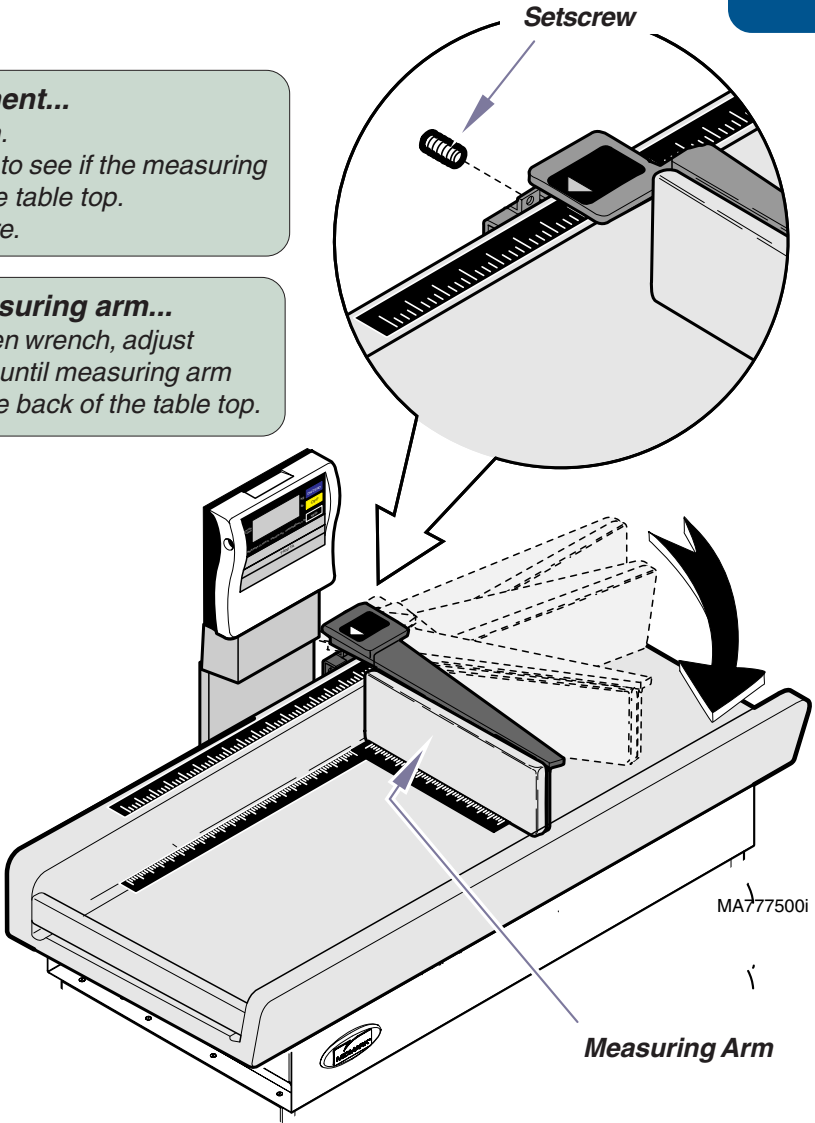
## Linear Scale

### Checking / Adjusting Arm Alignment

<b>Linear Scale</b>	<b>Page</b>
Checking / Adjusting Arm Alignment .....	B-2
Exploded View / Part Numbers .....	E-5

**To check measuring arm alignment...**  
A. Pivot measuring arm out as shown.  
B. Using a carpenter's square, check to see if the measuring arm is square with the back of the table top.  
C. If necessary, adjust arm until square.

**To adjust measuring arm...**  
Using a 3/32" allen wrench, adjust setscrew in / out until measuring arm is square with the back of the table top.



# Component Testing & Repair

## Digital Scale

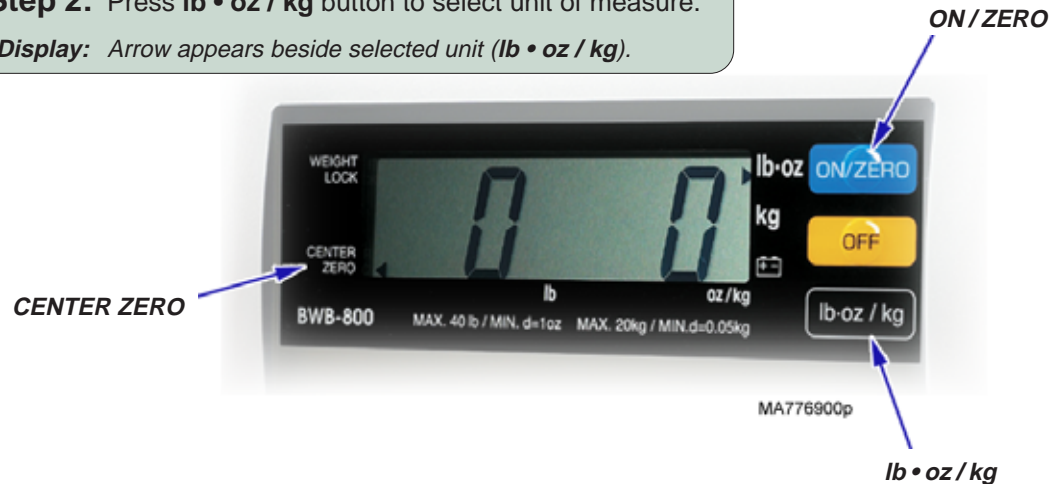
### Verifying Scale Accuracy

**Step 1:** Press **ON / ZERO** button.

**Display:** Flashes "8.8.8.8.8", then shows "0.0"  
Arrow appears beside **CENTER ZERO**  
(indicates scale is zeroed and ready for use).

**Step 2:** Press **lb • oz / kg** button to select unit of measure.

**Display:** Arrow appears beside selected unit (**lb • oz / kg**).

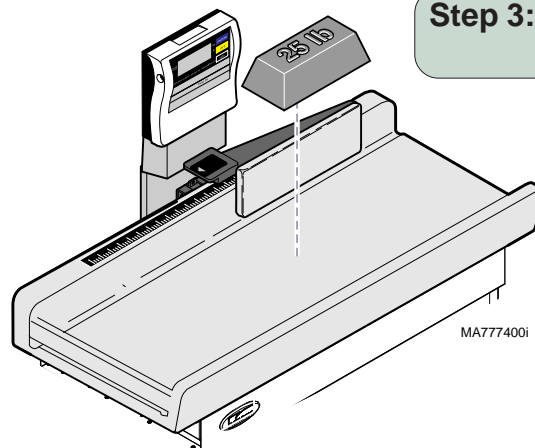


Digital Scale	Page
Verifying Scale Accuracy .....	B-5
Calibration Procedure .....	B-6
Gravity Correction Procedure .....	B-7
Display Mode Setting .....	B-8
Exploded View / Part Numbers .....	E-6

[www.Documark.com](http://www.Documark.com): [File Name](#)  
Digital Scale Replacement\* ..... 003-1836-00

\* Replacement instructions are provided with this part. They are also available on Documark.com, or by clicking on the link in the blue box.

**Step 3:** Place a 25 lb (11.3 kg) calibrated test weight in the center of the table top.



**Step 4:** The weight displayed should match the calibrated test weight.

**Note:** Allowable tolerance\*:  $\pm 2$  oz (56 g)



### WARNING

**If scale reading is out of tolerance...**  
Perform Calibration Procedure. If necessary, replace digital scale assembly\*

Do not use scale until problem has been rectified.

Models:  
Serial Numbers:

ALL

Digital Scale

B-5

# Component Testing & Repair

## Digital Scale - continued

### Calibration Procedure

The Calibration Procedure must be performed when any of the following conditions occur:

- Scale readings appear to be inaccurate.
- The digital display, or any other scale component is repaired or replaced.
- Annually, as part of a scheduled maintenance plan.
- The table is moved (geographically) to a new location with a significantly different elevation level.

#### Calibration Procedure:

#### Display shows:

<p><b>Step 1:</b> While pressing the <b>lb • oz / kg</b> button, press &amp; release the <b>ON / ZERO</b> button to turn display power ON.</p> <p>Release <b>lb • oz / kg</b> button when <b>'F 1'</b> appears on display.</p>	<p>'88888'</p> <p>'F 1'</p>
<p><b>Step 2:</b> Press the <b>ON / ZERO</b> button.</p>	<p>'F 2'</p>
<p><b>Step 3:</b> Press the <b>lb • oz / kg</b> button.</p>	<p>either '9' or '16'</p>
<p><b>Step 4:</b> If the display shows '16', press the <b>lb • oz / kg</b> button.</p> <p>If the display shows '9', press the <b>ON / ZERO</b> button, then press the <b>lb • oz / kg</b> button.</p> <p>Once display changes to '2', go to Step 5.</p>	<p>initially: '0' will change to: '2'</p> <p>initially: '0' will change to: '2'</p>



#### Calibration Procedure - continued:

#### Display shows:

<p><b>Step 5:</b> Gently place 50 lb. of calibrated weight on the center of the table top.</p> <p>Allow weight to stabilize for 10 seconds, then press the <b>lb • oz / kg</b> button.</p>	<p>'F 1'</p>
<p><b>Step 6:</b> Remove weights from table. Press OFF button.</p>	
<p><b>Step 7:</b> Verify scale accuracy by performing the procedure on the previous page.</p>	
<p><b>Step 8:</b> Perform "Gravity Correction Procedure" on following page.</p>	

## Digital Scale - continued

### Gravity Correction Procedure

The Gravity Correction Procedure must be performed when any of the following conditions occur:

- Whenever the scale is calibrated.
- The table is moved (geographically) to a new location with a significantly different elevation level.

#### Gravity Correction Procedure:

#### Display shows:

<p><b>Step 1:</b> While pressing the <b>lb • oz / kg</b> button, press &amp; release the <b>ON / ZERO</b> button to turn display power ON.</p> <p>Release <b>lb • oz / kg</b> button when <b>'F 1'</b> appears on display.</p>	<p>'88888'</p> <p>'F 1'</p>
<p><b>Step 2:</b> Press the <b>ON / ZERO</b> button until display shows <b>'F 3'</b>.</p>	<p>'F 3'</p>
<p><b>Step 3:</b> Press the <b>lb • oz / kg</b> button.</p>	<p>'0.00'</p>
<p><b>Step 4:</b> Adjust the gravitational compensation value to 0.00. (Press <b>ON / ZERO</b> button to increase) (Press <b>OFF</b> button to decrease)</p>	<p>'0.0x'</p> <p>adjust if necessary to show: '0.00'</p>
<p><b>Step 5:</b> Press the <b>lb • oz / kg</b> button.</p>	<p>'F 1'</p>
<p><b>Step 6:</b> Press the <b>OFF</b> button.</p>	



**Models:**  
**Serial Numbers:**

# Component Testing & Repair

## Digital Scale - continued

### Display Mode Setting

The Display Mode Setting Procedure must be performed when any of the following conditions occur:

- The digital display unit is replaced.
- The PC board inside the digital display unit is replaced.

#### Display Mode Setting Procedure:

#### Display shows:

<p><b>Step 1:</b> While pressing the <b>lb • oz / kg</b> button, press &amp; release the <b>ON / ZERO</b> button to turn display power ON.</p> <p>Release <b>lb • oz / kg</b> button when 'F 1' appears on display.</p>	' 88888 '
<p><b>Step 2:</b> Press the <b>ON / ZERO</b> button until display shows 'F 4'.</p>	' F 4 '
<p><b>Step 3:</b> Press the <b>lb • oz / kg</b> button. (The mode setting <u>should</u> be 'H8830'. If an initial mode setting has not been performed, only 'H' will be displayed.)</p>	' H '
<p><b>Step 4:</b> Press the <b>ON / ZERO</b> button to change the first digit to '8'. Then press the <b>OFF</b> button to change the second digit to '8'.</p>	' Hxx ' to ' H88 '



#### Display Mode Setting Procedure:

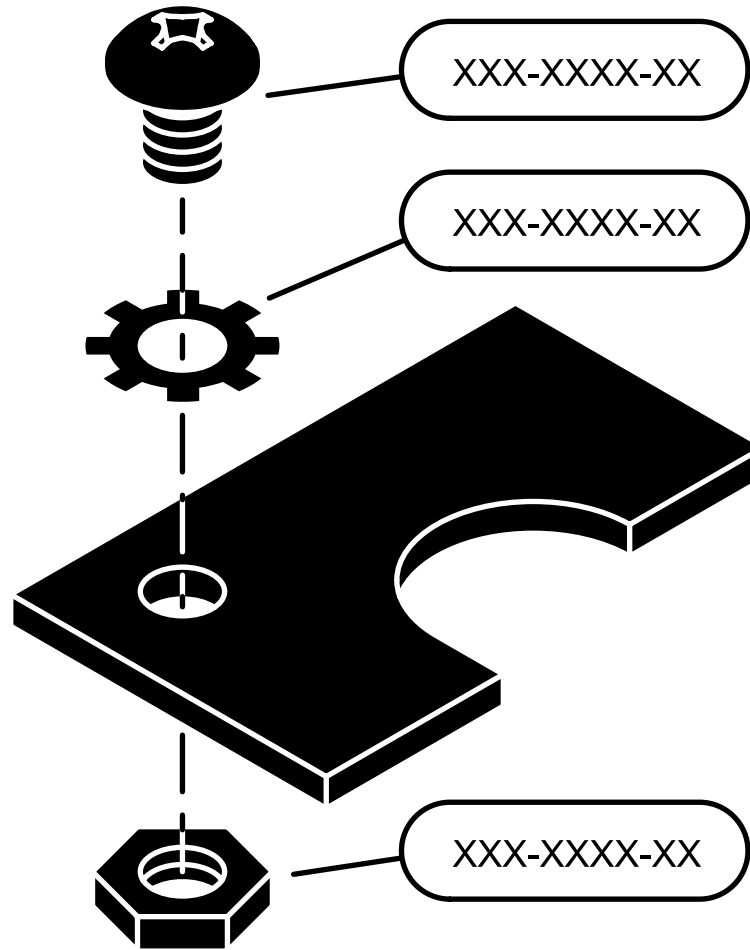
#### Display shows:

<p><b>Step 5:</b> Press the <b>lb • oz / kg</b> button.</p>	' F 1 '
<p><b>Step 6:</b> Press the <b>ON / ZERO</b> button until display shows 'F 5'.</p>	' F 5 '
<p><b>Step 7:</b> Press the <b>ON / ZERO</b> button to change the third digit to '3'. Then press the <b>OFF</b> button to change the fourth digit to '0'.</p>	' H88xx ' to ' H8830 '
<p><b>Step 8:</b> Press the <b>lb • oz / kg</b> button.</p>	' F 1 '
<p><b>Step 9:</b> Press the <b>OFF</b> button to turn to turn digital display off.</p>	



# Section E

## *Exploded Views & Parts Lists*



<u>Description</u>	<u>Page</u>
<b>Pictorial Index</b> .....	E-2
Upholstered Top .....	E-3
Upperwrap Components .....	E-4
Linear Scale .....	E-5
Digital Scale .....	E-6
Cabinet Assembly .....	E-7
Doors & Drawer .....	E-8
Door / Drawer Lock Components ...	E-9

# 640

## Digital Scale ..... E-6

*includes:  
mounting bracket & hardware*

## Upholstered Top ..... E-3

*includes:  
linear scale pad & measuring label*

## Cabinet Assembly ..... E-7

*includes:  
cabinet shelf & shelf clips*

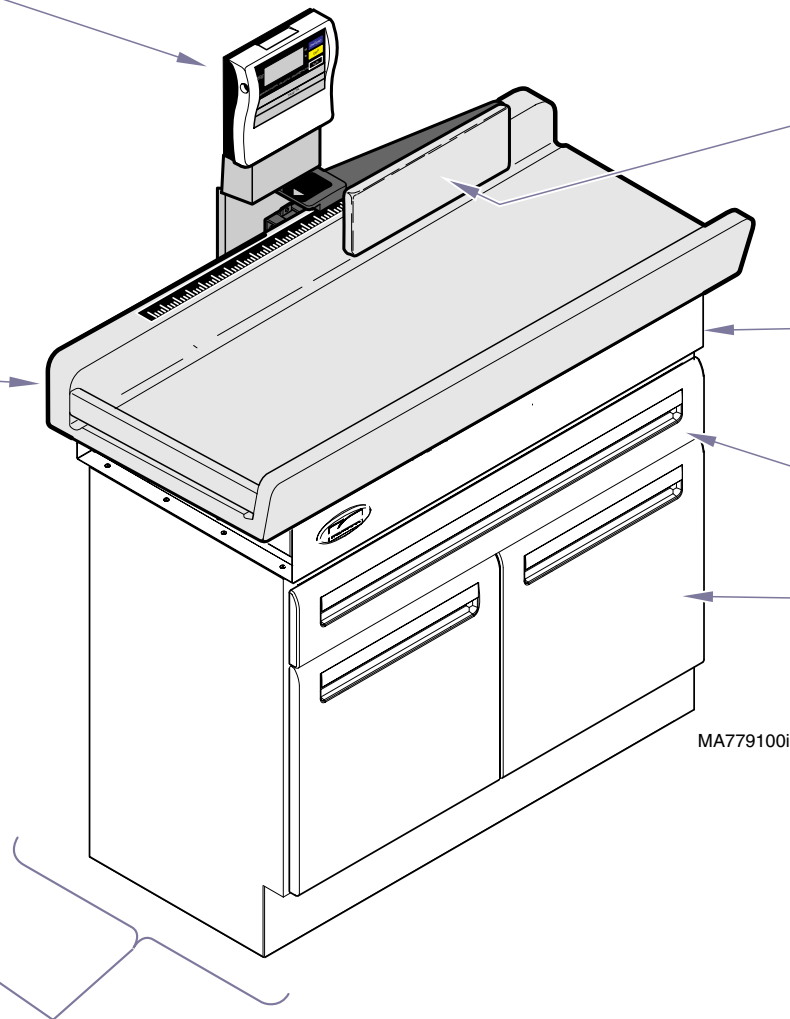
## Linear Scale ..... E-5

## Upperwrap Components ..... E-4

## Doors & Drawer ..... E-8

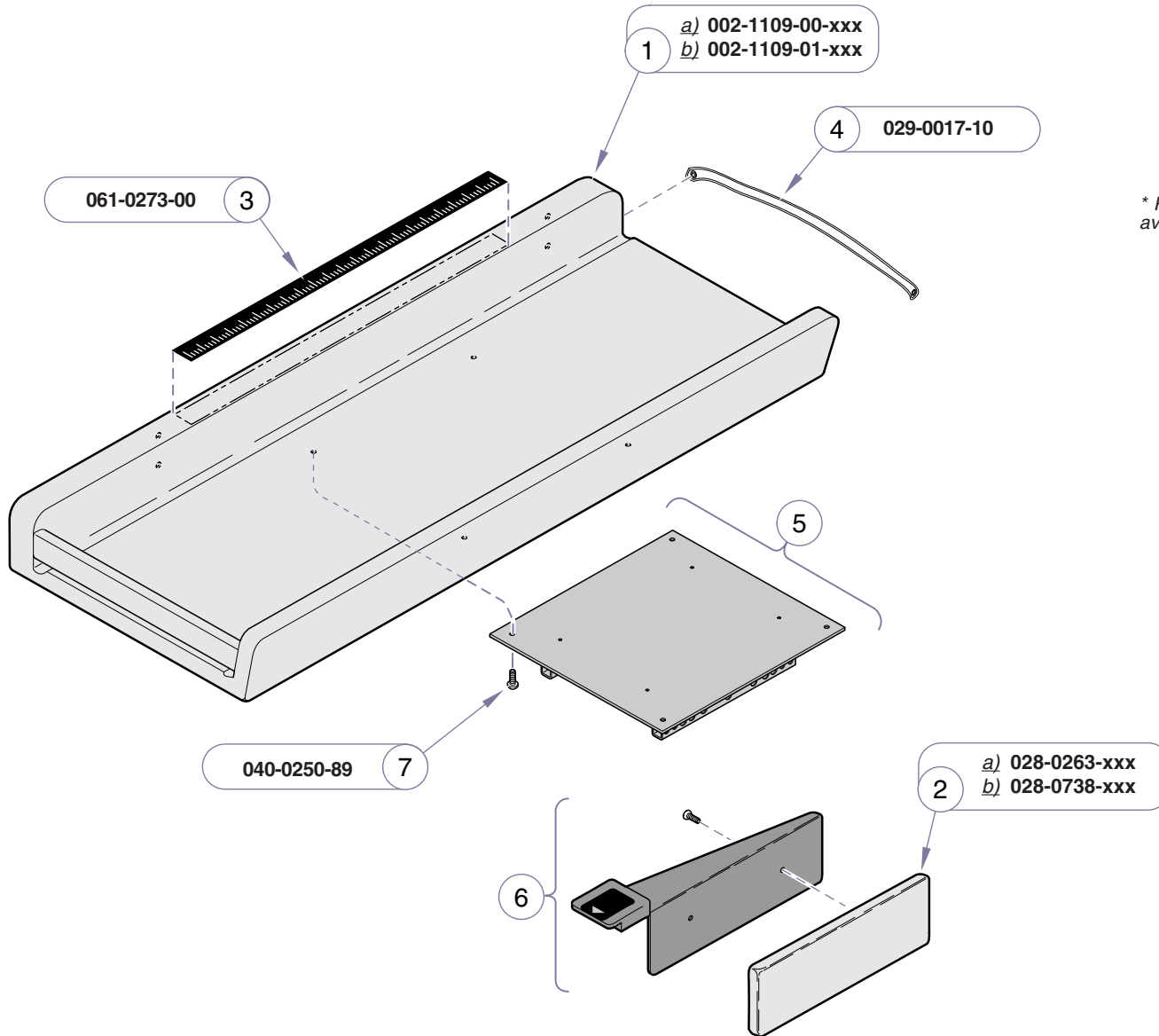
*includes:  
color inserts, hinges, & slides*

## Optional Door / Drawer Lock Components ..... E-9



\* Indicates multiple pages due to a serial number break for the parts illustration

ATTENTION: Refer to *Current Color Options* link for appropriate numbers to replace -xxx.



Refer To:	Page
Linear Scale .....	E-5
Digital Scale .....	E-6
Upholstered Top	
Replacement* .....	003-1811-00
Color Selector .....	<a href="http://www.midmark.com">www.midmark.com</a>

\* Replacement instructions are provided with this part. They are also available on [Documark.com](http://Documark.com), or by clicking on the link in the blue box.

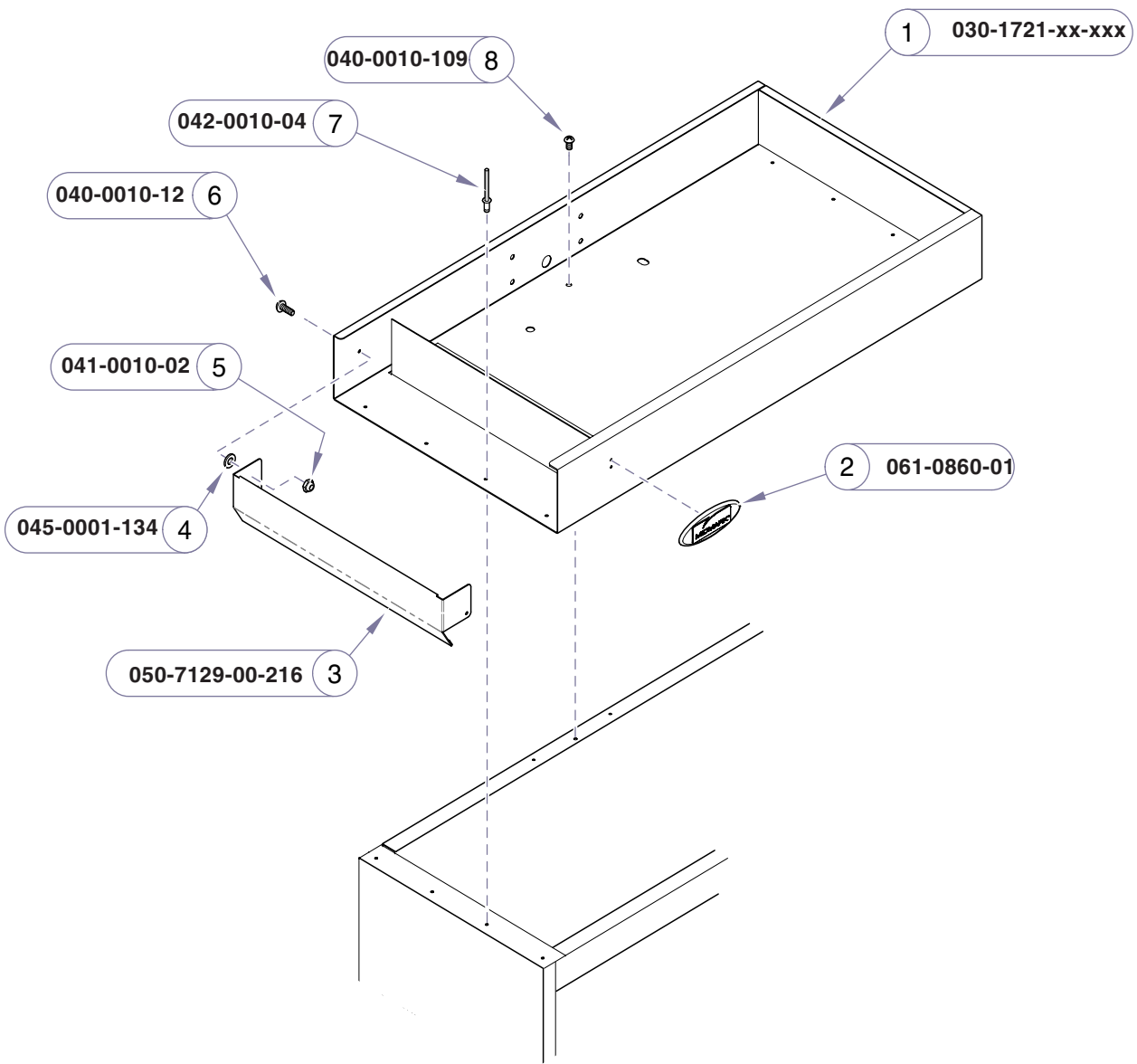
Item	Description	Qty.
1	Upholstery Kit (incl. items 2 & 3):	
	a) Standard .....	1
	b) Cal. 133 .....	1
2	• Linear Scale Pad	
	a) Standard .....	1
	b) Cal. 133 .....	1
3	• Linear Scale Label .....	1
4	Paper Tear Strap .....	1
5	Refer to: "Digital Scale" .....	Ref
6	Refer to: "Linear Scale" .....	Ref
7	Screw (1/4-20 x 1") .....	4

**Always Specify Model & Serial Number**

MA7785001

**Models:** | **All**  
**Serial Numbers:** |

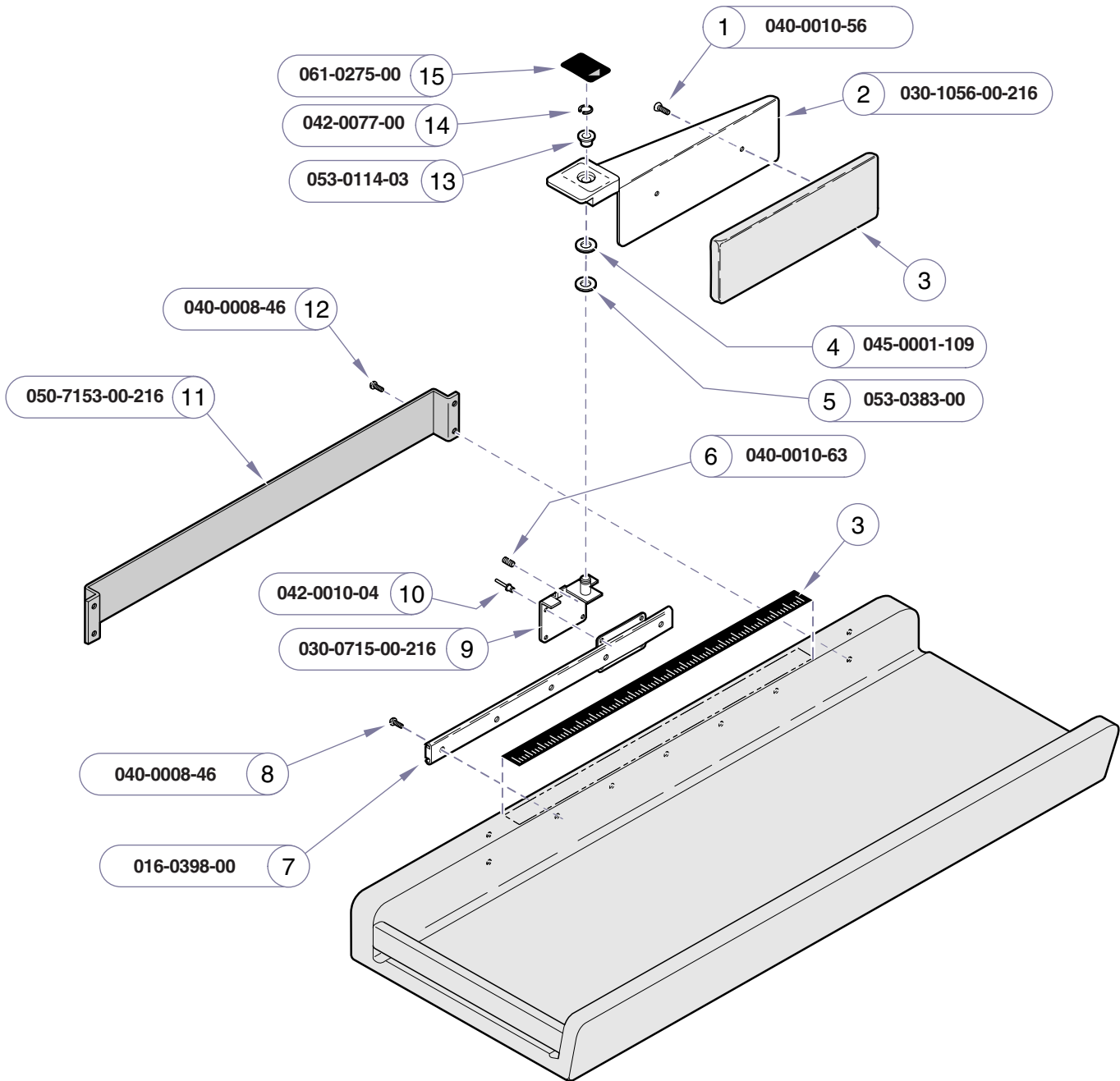
**Upholstered Top**



Item	Description	Qty.
1	Upperwrap .....	1
2	Midmark Nameplate .....	1
3	Paper Roll Cover .....	1
4	Washer .....	1
5	Nut .....	1
6	Screw (#10-24 x 1/2") .....	1
7	Pop Rivet .....	8
8	Screw (#10-24 x 3/8") .....	1

**Always Specify Model & Serial Number**

MA779000i



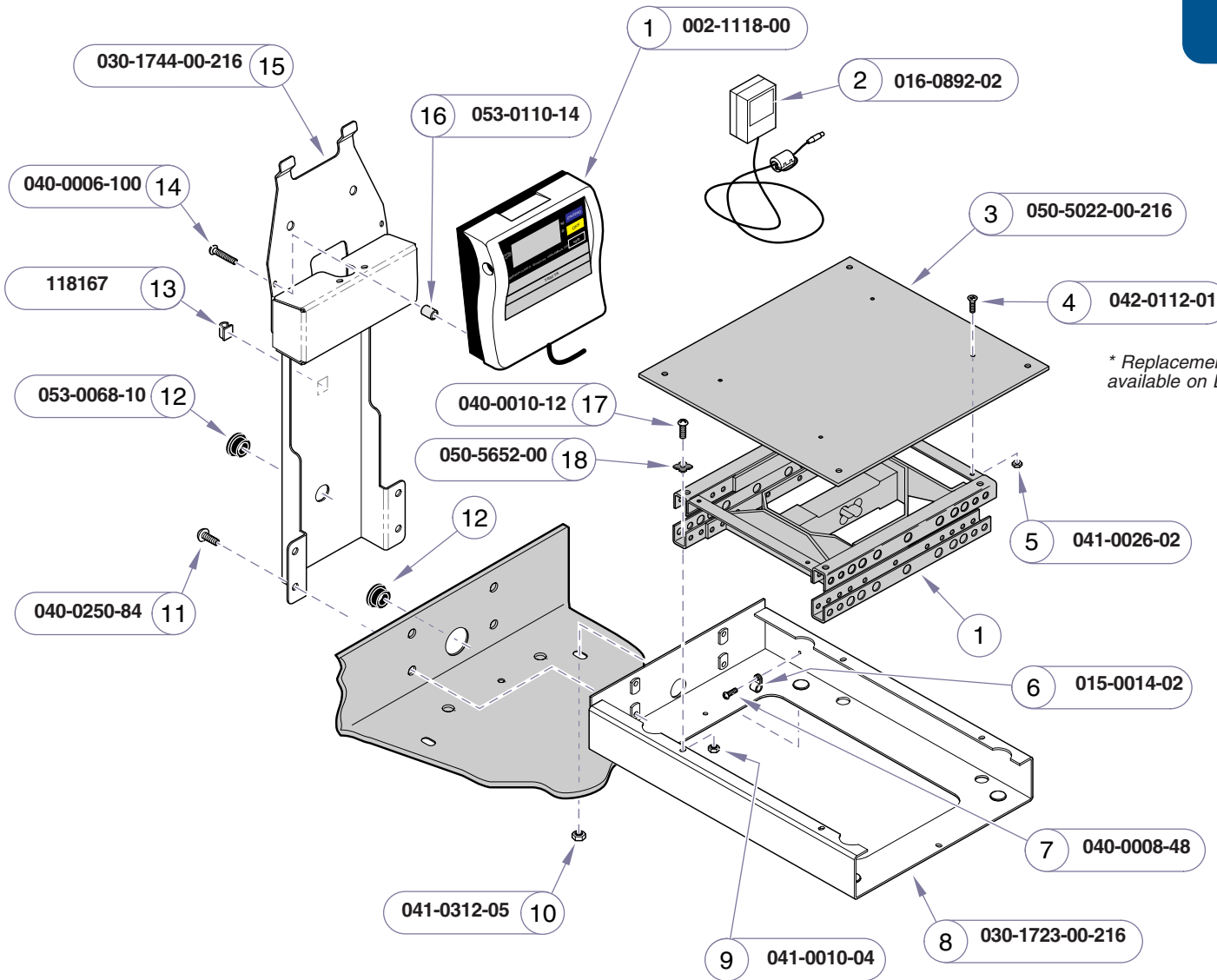
MA7786001

Item	Description	Qty.
1	Screw (#10-24 x 5/8") .....	2
2	Measuring Arm Weldment .....	1
3	Refer to: "Upholstered Top" .....	Ref
4	Pivot Washer .....	1
5	Spring Washer .....	1
6	Setscrew .....	1
7	Linear Slide Assembly .....	1
8	Screw (#8 x 3/4") .....	9
9	Pivot Bracket .....	1
10	Pop Rivet .....	4
11	Slide Cover .....	1
12	Screw (3/4") .....	4
13	Flange Bearing .....	1
14	Snap Ring .....	1
15	Arrow Label .....	1

**Always Specify Model & Serial Number**

**Models:** | **All**  
**Serial Numbers:** |

**Linear Scale**  
**(Measuring Arm)**

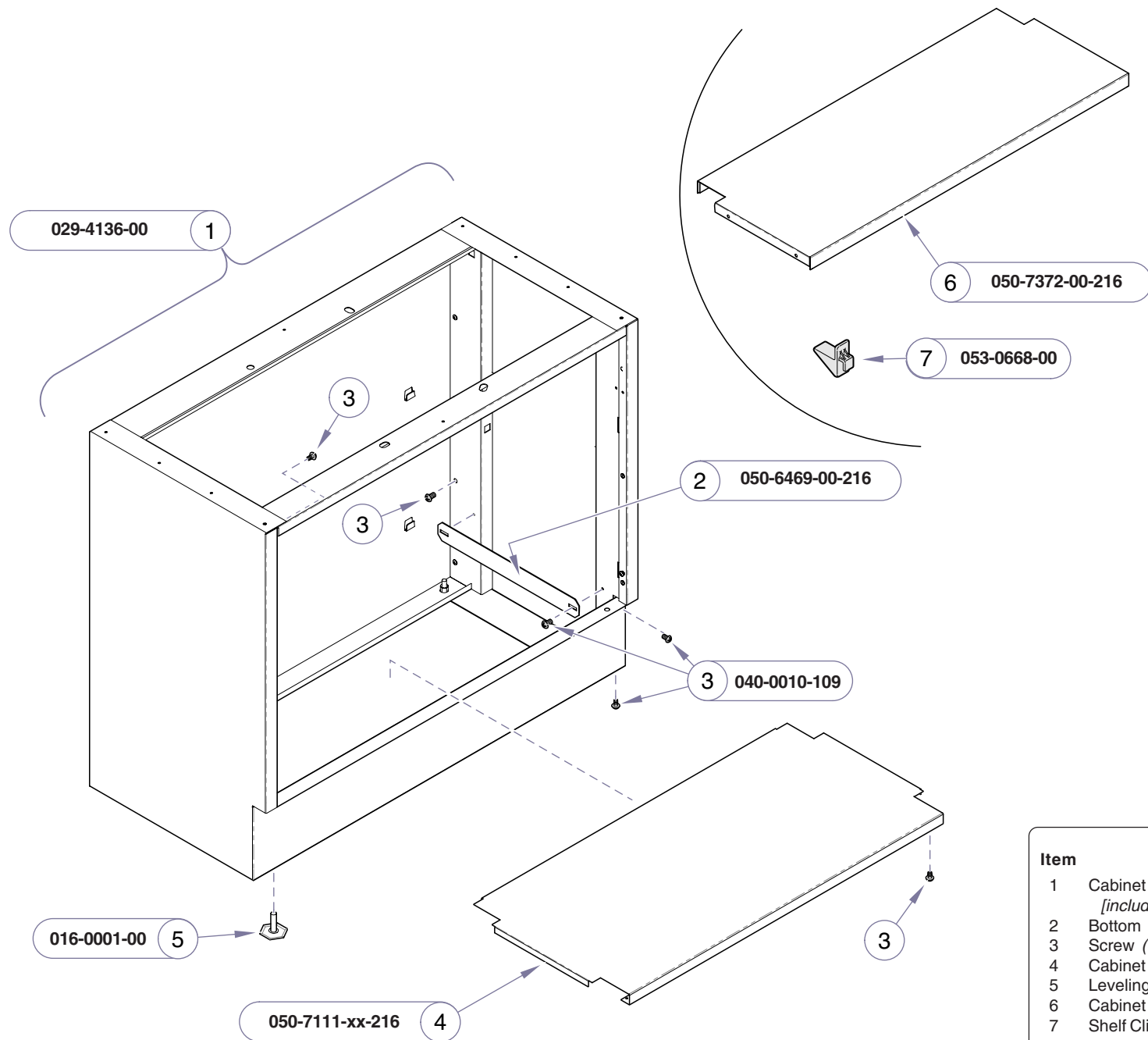


\* Replacement instructions are provided with this part. They are also available on Documark.com, or by clicking on the link in the blue box.

Item	Description	Qty.
1	Tanita Digital Scale Assembly (incl. item 2) Tanita model: BWB-800TS (for individual parts, contact: Tanita Tech. Service @ 847-640-9241) ..	1
2	• AC Adapter .....	1
3	Mounting Plate .....	1
4	Screw (M4 x 8 mm) .....	4
5	Nut .....	4
6	Cable Clamp .....	1
7	Screw (#8-32 x 5/8") .....	1
8	Scale Mount Weldment .....	2
9	Nut .....	4
10	Nut .....	4
11	Screw (1/4-20 x 3/4") .....	4
12	Snap Bushing .....	2
13	Cable Clamp .....	3
14	Screw (#6-20 x 1 1/4") .....	2
15	Digital Scale Display Bracket .....	1
16	Spacer .....	2
17	Screw (#10-24 x 5/8") .....	4
18	Scale Washer .....	4

**Always Specify Model & Serial Number**

MA7787001



Item	Description	Qty.
1	Cabinet Assembly [includes screws (item 3) & nutserts] .....	1
2	Bottom Support Bracket .....	2
3	Screw (#10-24 x 3/8") .....	12
4	Cabinet Bottom .....	1
5	Leveling Foot .....	4
6	Cabinet Shelf .....	1
7	Shelf Clip .....	4

**Always Specify Model & Serial Number**

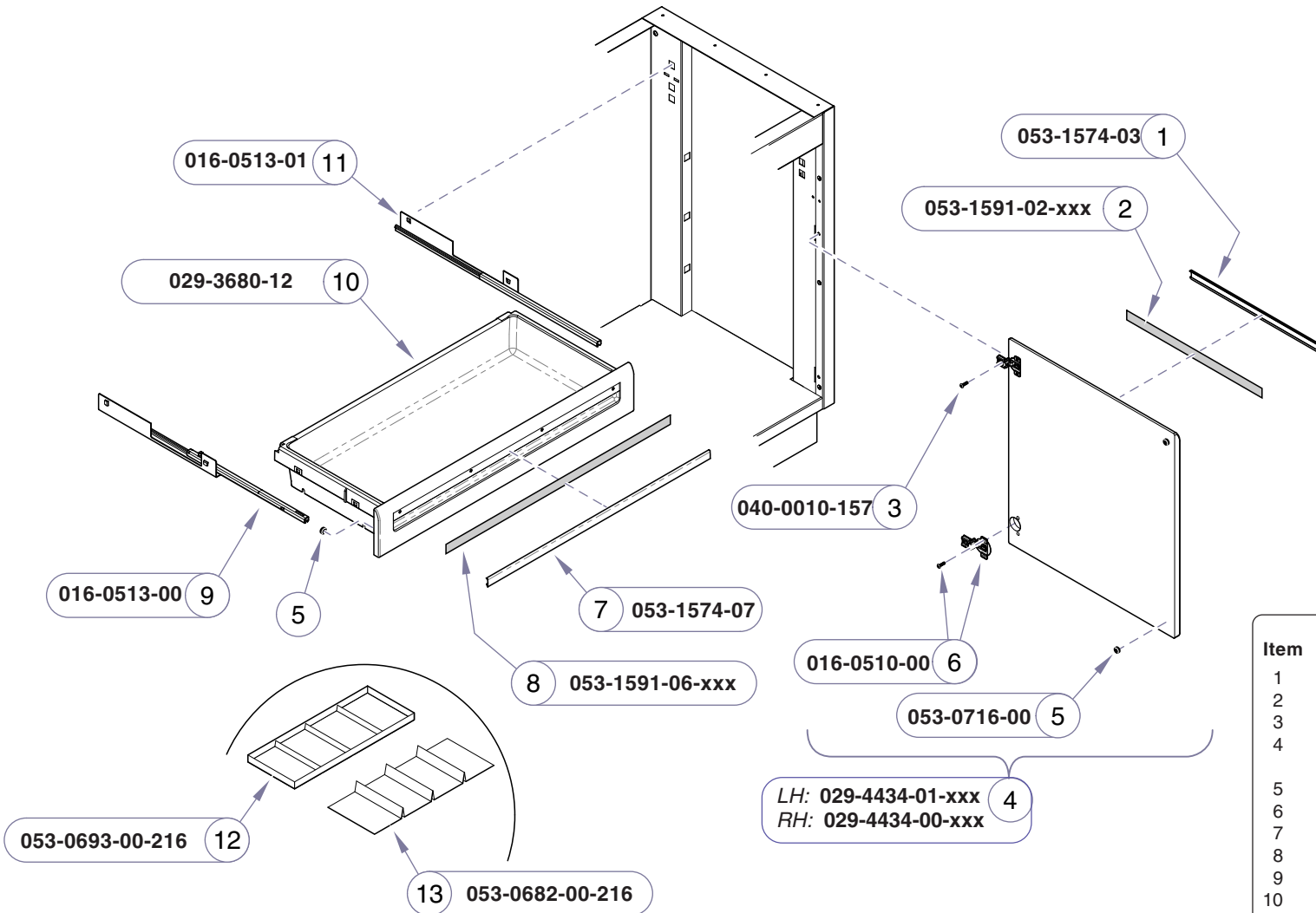
MA7789001

**Models:** | **All**  
**Serial Numbers:** |

**Cabinet Assembly**

© Midmark Corporation 2007 SF-1918

**ATTENTION:** For components of the door or drawer locking mechanism, refer to Door / Drawer Lock Components on the following page.

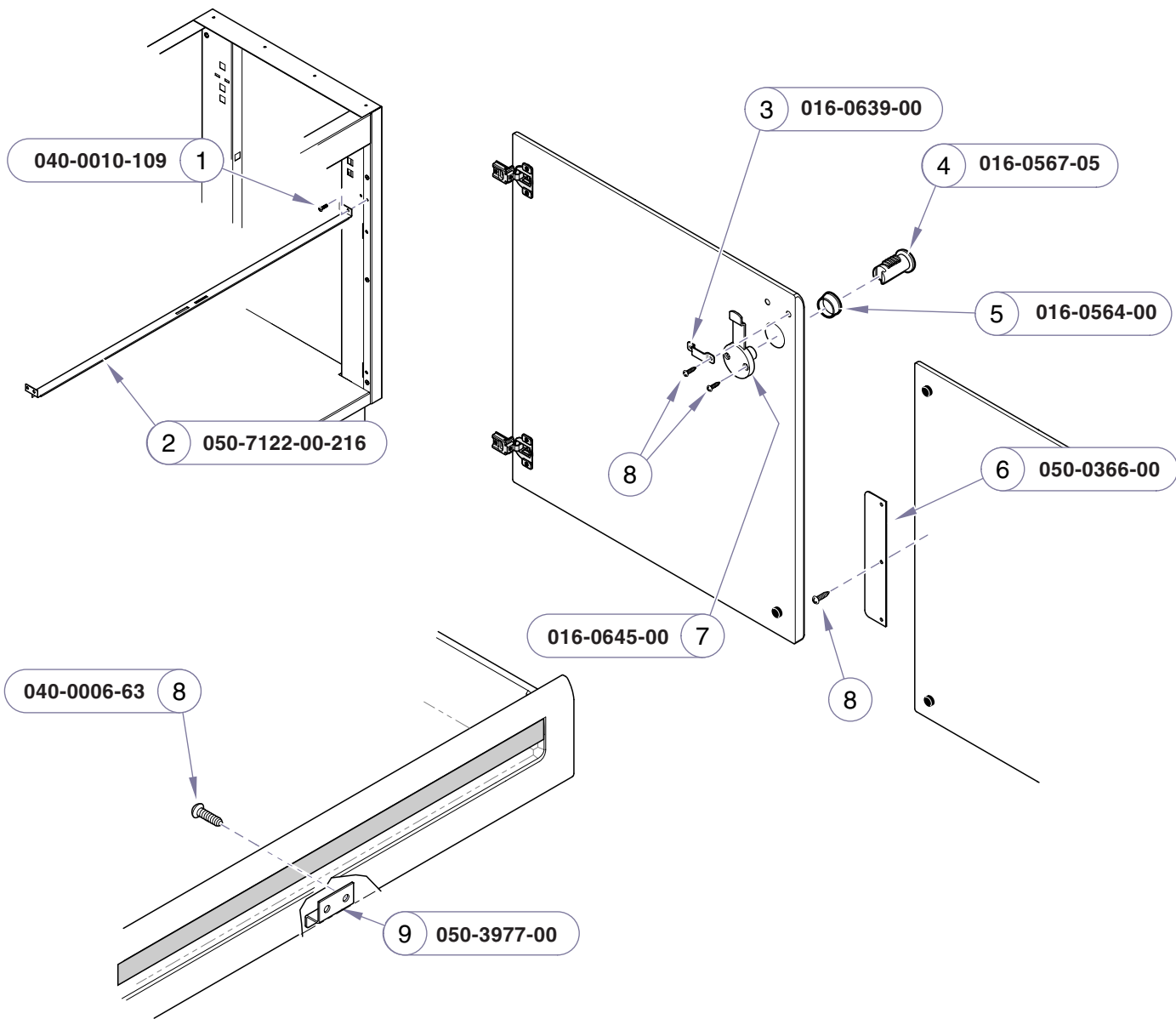


Item	Description	Qty.
1	Clear Handle Cover (doors) .....	2
2	Colored Handle Insert (doors) .....	2
3	Screw (#10-24 x 5/8") .....	4
4	Door Assembly (RH shown) (incl. items 5 & 6) .....	2
5	• Bumper .....	2
6	• Hinge (incl. screws).....	2
7	Clear Handle Cover (drawer) .....	1
8	Colored Handle Insert (drawer) .....	1
9	Drawer Slide (LH) .....	1
10	Drawer Assembly (includes item 5).....	1
11	Drawer Slide (RH) .....	1
12	Drawer Divider .....	1
13	Drawer Divider .....	1

**Always Specify Model & Serial Number**

MA778800i





Item	Description	Qty.
1	Screw (10-24 x 3/8")	4
2	Lock Mullion	1
3	Strike Plate	1
4	Lock Plug	1
5	Lock Bezel	1
6	Door Plate	1
7	Lock Cylinder	1
8	Screw (#6 x 5/8")	7
9	Drawer Lock Bracket	1

**Always Specify Model & Serial Number**

MA7816i

**Models:** | **All**  
**Serial Numbers:** |

**Door / Drawer  
Lock Components**

© Midmark Corporation 2007 SF-1918





# SERVICE PARTS FAX ORDERING FORM

(Do not tear out this page. Photo copy this page for use only.)



## IMPORTANT NOTES:

- 1) **Use this form for all non-warranty orders only.** Warranty orders must be telephoned in (1-800-643-6275).
- 2) FAX number to send order to:  
877-249-1793
- 3) All emergency orders must be received @ Midmark by 1:00 pm EST.
- 4) All underlined headings should be filled in prior to submittal.

<b>DATE:</b> ___ / ___ / ___	<b>TIME:</b> _____ am pm
<b>METHOD OF SHIPMENT:</b> _____	
<b>PRIORITY:</b> <input type="checkbox"/>	<b>NON-EMERGENCY ORDER</b> {to ship within 72 hours if part(s) are in stock.}
<input type="checkbox"/>	<b>EMERGENCY ORDER</b> {to ship within 24 hours if part(s) are in stock.} [see note 3]

<b>DEALER P.O. #:</b> _____
<b>ACCOUNT #:</b> _____

<b>MODEL #:</b> _____	<b>SERIAL #:</b> _____	<b>SALES ORDER #</b> (if applicable) _____
-----------------------	------------------------	---

<b>NAME:</b> _____	<b>SHIP TO:</b> _____ _____ _____ _____
<b>ADDRESS:</b> _____	
<b>CITY:</b> _____ <b>STATE:</b> _____ <b>ZIP:</b> _____	
<b>CONTACT:</b> _____	
<b>PHONE:</b> _____	
<b>FAX #:</b> _____	

LINE #	PART NUMBER	QTY.	DESCRIPTION	COLOR (if applicable)

<b>CREDIT CARD INFORMATION</b>			
CARD TYPE _____	CARD # _____	EXP. DATE _____ / _____ / _____	
NAME ON CARD _____		SIGNATURE _____	

ATTENTION: CUSTOMER SERVICE DEPARTMENT

ADDITIONAL COMMENTS:

--



Midmark Corporation  
60 Vista Drive  
P.O. Box 286  
Versailles, OH 45380-0286  
937-526-3662  
Fax 937-526-5542  
[www.midmark.com](http://www.midmark.com)



Because we care.