

419

-001 thru -002

Power Examination Table



Service and Parts Manual

Serial Number Prefixes:
AY

NO LONGER IN PRODUCTION
Some service parts may not
be available for this product!



419 -001
thru
-002

FOR USE BY MIDMARK TRAINED TECHNICIANS ONLY

TABLE OF CONTENTS

Section/Paragraph	Page	Section/Paragraph	Page
IMPORTANT INSTRUCTIONS			
General Safety Instructions	ii	Stirrup Assembly	6-9.*
Safety Alert Symbols	ii	Foot Extension Components	6-10.*
Warranty Instructions	ii	Footboard Components	6-11
SECTION I GENERAL INFORMATION		Covers Components	6-12.*
Not Available		Inner Member Components	6-13
SECTION II TESTING AND TROUBLESHOOTING		Base and Tilt Actuator Assembly	6-14.*
Not Available		Middle Member Components	6-15
SECTION III SCHEDULED MAINTENANCE		Base Components	6-16.*
Not Available		Footswitch Components	6-17
SECTION IV MAINTENANCE/SERVICE INSTRUCTIONS		Footswitch Electrical Connections	6-18
Not Available		Motor and Capacitor Electrical Connections	6-19
SECTION V SCHEMATICS AND DIAGRAMS		COMMENTS	7-1
5.1 Electrical Schematics / Wiring Diagrams	5-1	FAX ORDERING FORM	7-2
SECTION VI PARTS LIST			
6.1 Introduction	6-1		
6.2 Description of Columns	6-1		
6.3 Torque Specifications And Important Assembly Notes	6-1		
Pictorial Index	6-2		
Upholstery Set	6-3		
Upholstery Components	6-4.*		
Headrest Components	6-5.*		
Back Components	6-6.*		
Back and Foot Actuator Assembly	6-7		
Seat Components	6-8.*		

(*) Indicates that there has been a serial number break for the illustration and that there are additional point page(s) following the original page.

IMPORTANT INSTRUCTIONS

General Safety Instructions

Safety First: The primary concern of Midmark Corporation is that this table is maintained with the safety of the patient and staff in mind. To assure that services and repairs are completed safely and correctly, proceed as follows:

- (1) Read this entire manual before performing any services or repairs on this table.
- (2) Be sure you understand the instructions contained in this manual before attempting to service or repair this table.

Safety Alert Symbols

Throughout this manual are safety alert symbols that call attention to particular procedures. These items are used as follows:



DANGER

A DANGER is used for an imminently hazardous operating procedure, practice, or condition which, if not correctly followed, will result in loss of life or serious personal injury.



WARNING

A WARNING is used for a potentially hazardous operating procedure, practice, or condition which, if not correctly followed, could result in loss of life or serious personal injury.



CAUTION

A CAUTION is used for a potentially hazardous operating procedure, practice, or condition which, if not correctly followed, could result in minor or moderate injury. It may also be used to alert against unsafe practices.



EQUIPMENT ALERT

An EQUIPMENT ALERT is used for an imminently or potentially hazardous operating procedure, practice, or condition which, if not correctly followed, will or could result in serious, moderate, or minor damage to unit.

NOTE

A NOTE is used to amplify an operating procedure, practice or condition.

Warranty Instructions

Refer to the Midmark "Limited Warranty" printed in the Installation and Operation Manual for warranty information. Failure to follow the guidelines listed below will void the warranty and/or render the 419 Power Examination Table unsafe for operation.

- In the event of a malfunction, do not attempt to operate the table until necessary repairs have been made.
- Do not attempt to disassemble table, replace malfunctioning or damaged components, or perform adjustments unless you are one of Midmark's authorized service technicians.
- Do not substitute parts of another manufacturer when replacing inoperative or damaged components. Use only Midmark replacement parts.

**SECTION V
SCHEMATICS AND DIAGRAMS**

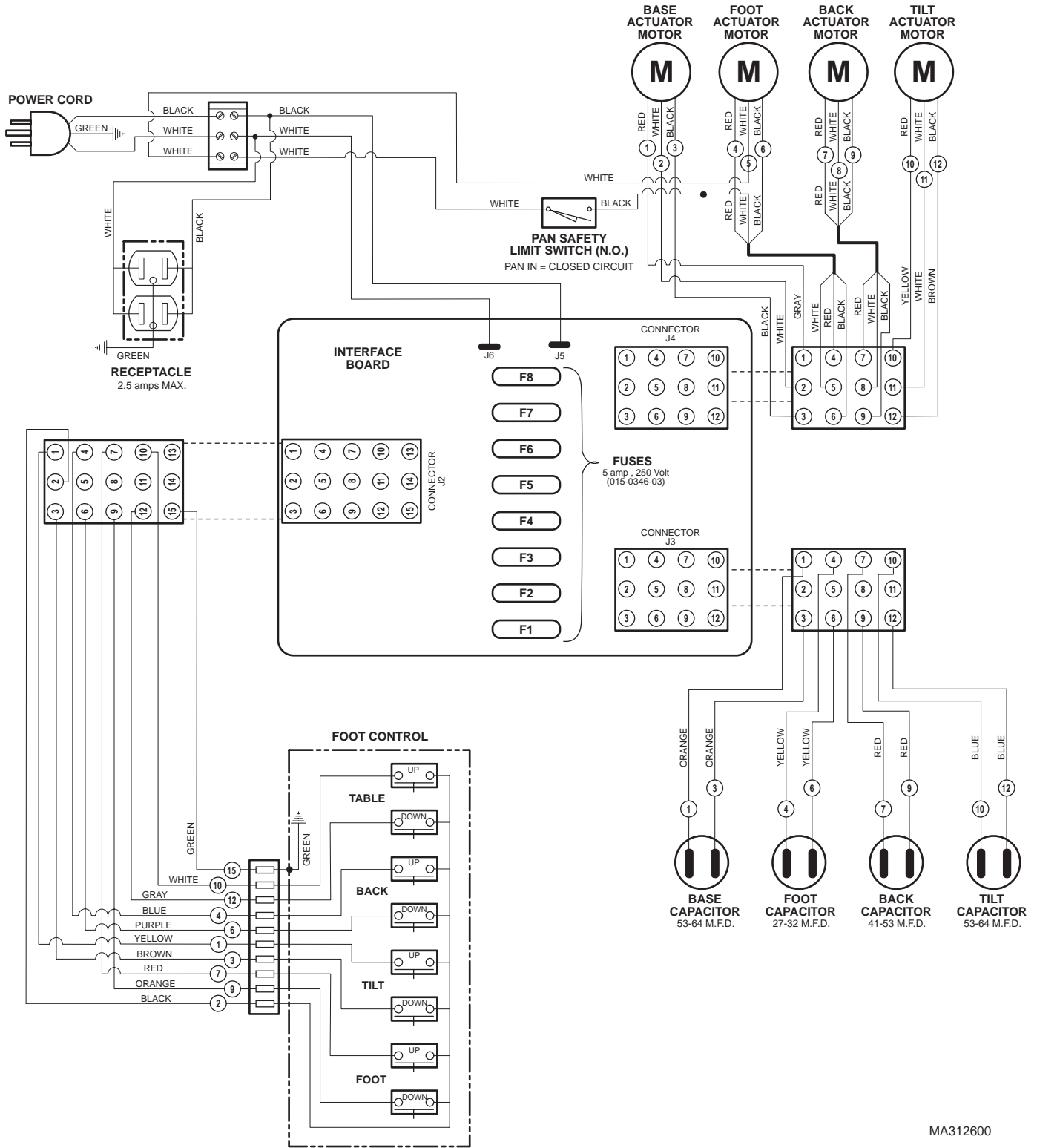
**5.1 Electrical Schematics / Wiring
Diagrams**

connections between the electrical components in the table.

Figure 5-1 illustrates the logic / current flow and wiring

See next page for Illustration

SECTION V SCHEMATICS AND DIAGRAMS



MA312600

Figure 5-1. Electrical Schematic / Wiring Diagram

SECTION VI PARTS LIST

6.1 Introduction

The illustrated parts list provides information for identifying and ordering the parts necessary to maintain the unit in peak operating condition. Refer to paragraph 1.5 for parts ordering information.

The parts list also illustrates disassembly and assembly relationships of parts.

6.2 Description of Columns

The *Item* column of the parts list gives a component its own unique number. The same number is given to the component in the parts illustration. This allows a part number of a component to be found if the technician can visually spot the part on the illustration. The technician simply finds the component in question on the illustration and notes the item number of that component. Then, he finds that item number in the parts list. The row corresponding to the item number gives the technician the part number, a description of the component, and quantity of parts per subassembly. Also, if a part number is known, the location of that component can be determined by looking for the item number of the component on the illustration.

The *Part No.* column lists the MIDMARK part number for that component.

The *Description* column provides a physical description of the component.

The *Qty.* column lists the number of units of a particular component that is required for the subassembly. The letters "AR" denote "as required" when quantities of a particular component cannot be determined, such as: adhesive.

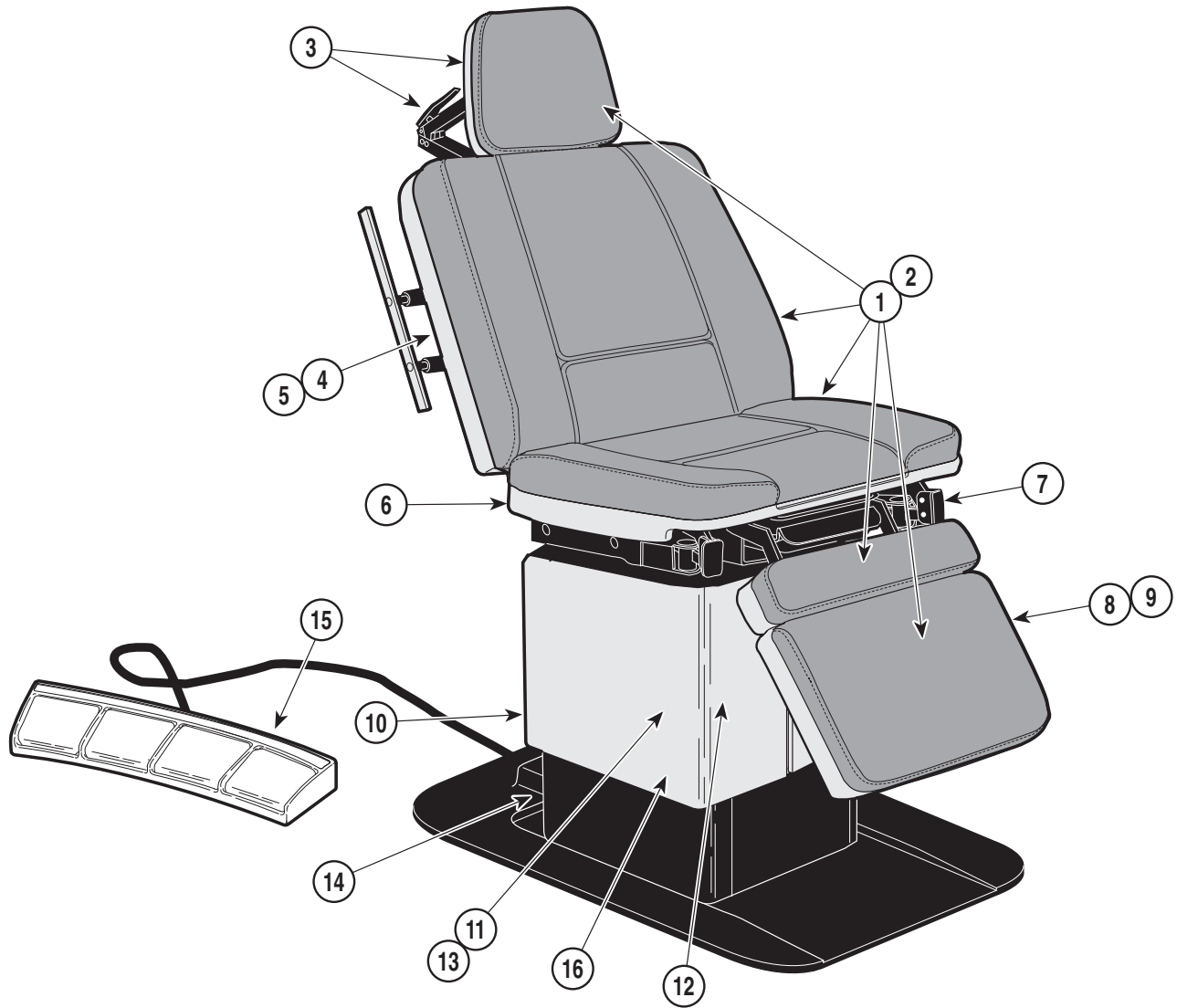
Bullets [•] in the *Part No.* column and the *Description* column show the indenture level of a component. If a component does not have a bullet, it is a main component of that illustration. If a component has a bullet, it is a subcomponent of the next component listed higher in the parts list than itself that does not have a bullet. Likewise, if a component has two bullets, it is a subcomponent of the next component listed higher in the parts list than itself that has only one bullet.

6.3 Torque Specifications and Important Assembly Notes

When specific assembly torque specifications, measurements, or procedures have been identified, by our engineering department, as required to assure proper function of the unit, those torque specifications measurements, and procedures will be noted on the parts illustrations. Adherence to these requirements is essential.

Pictorial Index

SECTION VI PARTS LIST



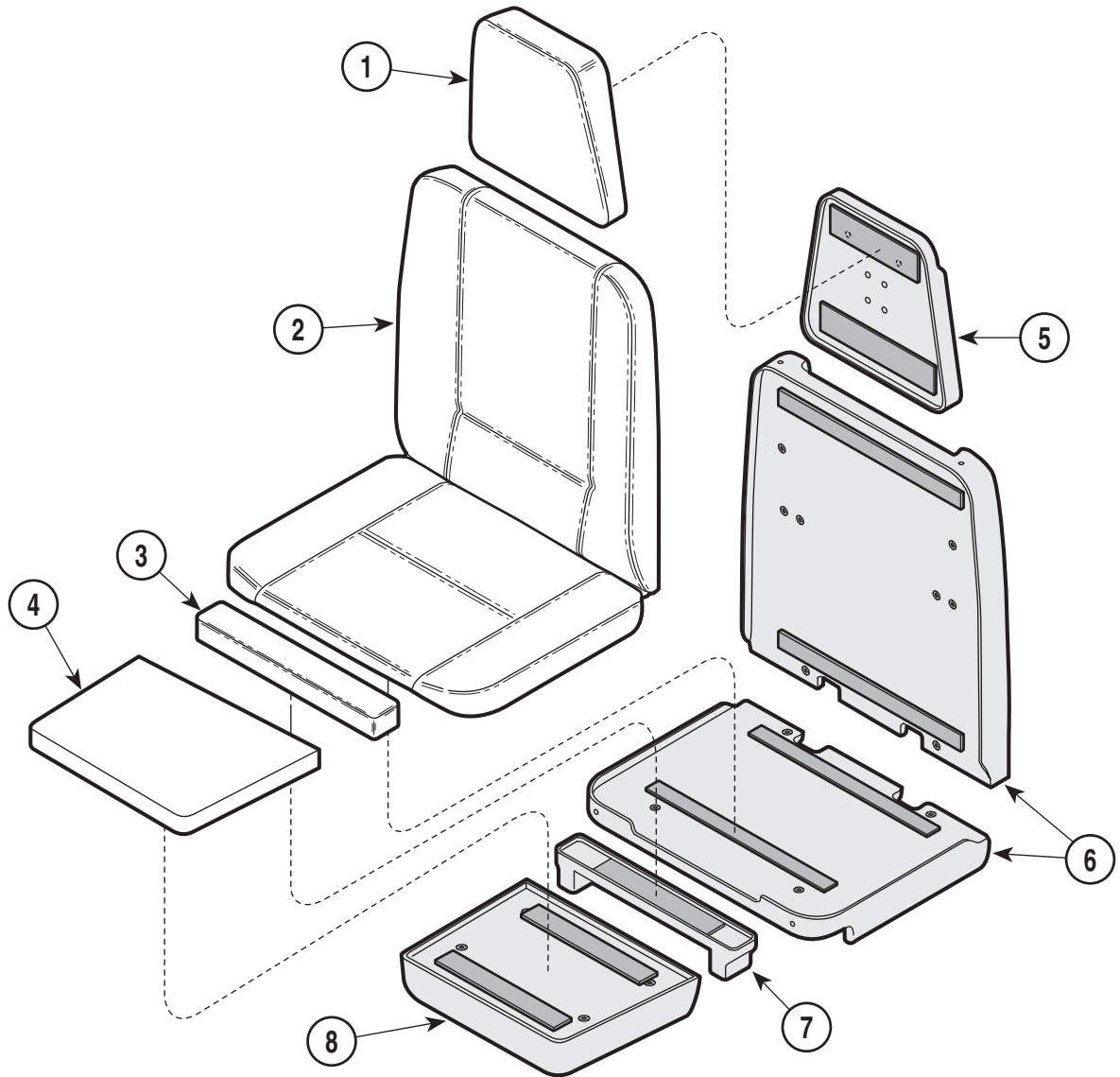
MA295800

Item	Part No.	Description	Page	Item	Part No.	Description	Page
	419-002	Examination Table (115 VAC {Serial Number Perfix "AY"})	6-2	OPTIONAL ACCESSORIES			
				Refer to MEDICAL ACCESSORY BOOK {004-0096-00}			
1	•	• Upholstery Set	6-3	18	• 9A43001	• Chair Arm	9A43
2	•	• Upholstery Components	6-4	19	• 9A51001	• Facial Pad	9A51
3	•	• Headrest Components	6-5	20	• 9A60001	• Restraint Belts	9A60
4	•	• Back Components	6-6	21	• 9A75001	• Castor Base Assembly	9A74
5	•	• Back and Foot Actuator Assembly	6-7	22	• 9A76001	• Base Rail Assembly	9A76
6	•	• Seat Components	6-8	23	• 9A77001	• I. V. Pole Assembly	9A77
7	•	• Stirrup Assembly	6-9	24	• 9A78001	• Vision Block Screen	9A78
8	•	• Foot Extension Components	6-10	25	• 9A79001	• Special Procedures Headrest	9A79
9	•	• Footboard Components	6-11	26	• 9A81001	• Articulating Armboard	9A81
10	•	• Covers Components	6-12	27	• 9A82001	• Special Procedures Armboard	9A82
11	•	• Inner Member Components	6-13	28	• 9A83001	• Instrument Tray Assembly	9A83
12	•	• Base and Tilt Actuator Assembly	6-14	29	• 9A85001	• Foot Rest Step Assembly	9A85
13	•	• Middle Member Components	6-15	30	• 9A179001	• Fixed Armboard	9A179
14	•	• Base Components	6-16	31	• 9A182001	• Welch Allyn Hanger Assembly	9A182
15	•	• Footswitch Assembly	6-17	32	• 9A197001	• Swivel Wheel Castor Assembly	9A197
16	•	• Footswitch Electrical Components	6-18	33	•	• <u>Knee Crutch Assemblies</u>	
16	•	• Motor and Capacitor Electrical Connections	6-18	34	• 9A74002	• s/n AY1000 thru AY2970	9A74
				33	• 9A208002	• s/n AY2970 thru present	9A208
				35	• 9A144002	• s/n AY2970 thru present	9A144

Always Specify Model & Serial Number

Upholstered Set

SECTION VI PARTS LIST



MA277701

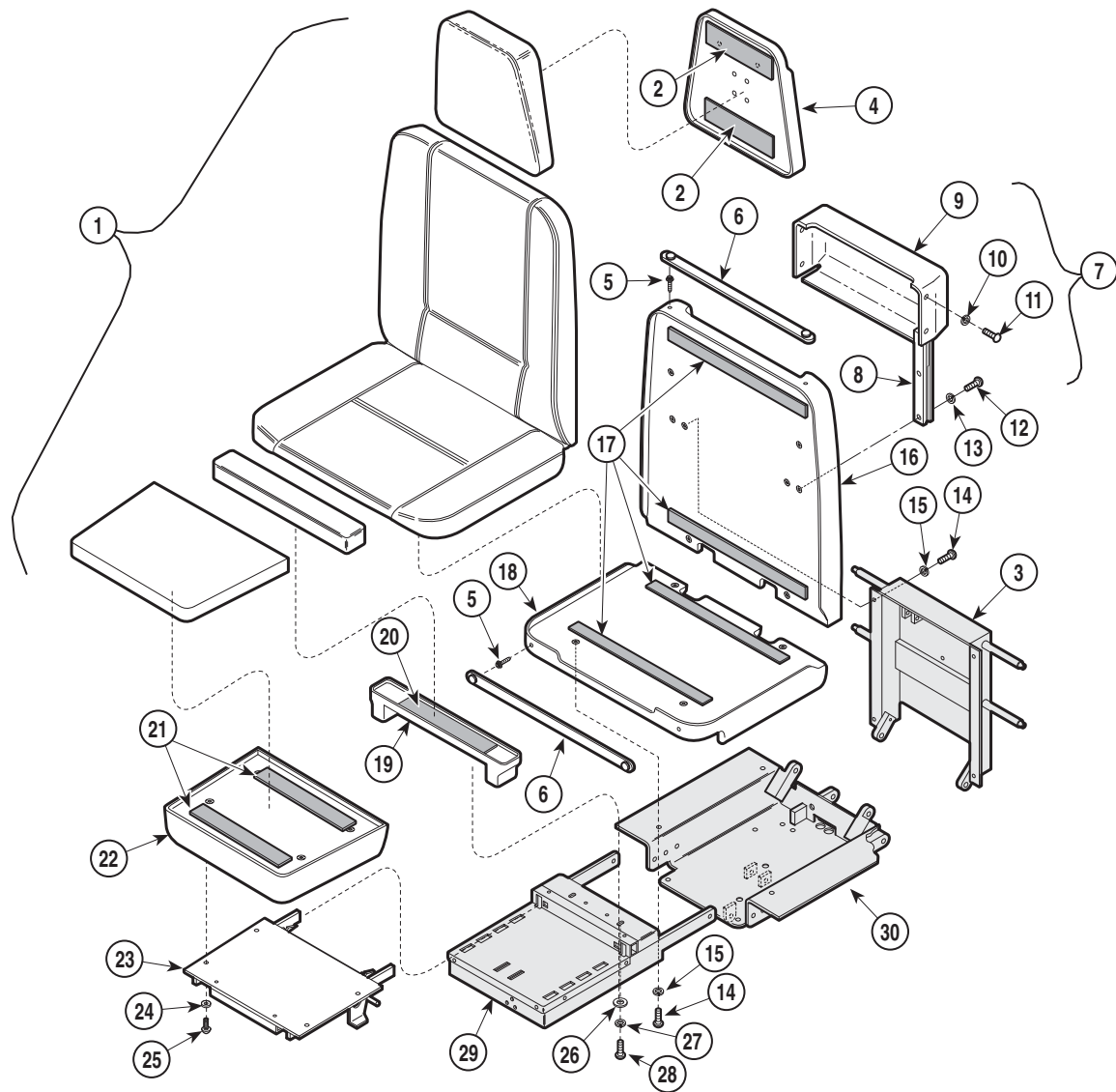
Item	Part No.	Description	Qty.	Item	Part No.	Description	Qty.
	002-0258-XX	Upholstery Set (Includes Items 1 thru 4 [* Specify Color])	1	5		Headboard Assembly (Refer to "Upholstery Components" Elsewhere)	Ref
1	• 028-0141-XX	• Upholstered Headrest (* Specify Color)	1	6		Backrest Assembly (Refer to "Upholstery Components" Elsewhere)	Ref
2	• 028-0140-XX	• Upholstered Back & Seat (* Specify Color)	1	7		Legboard Assembly (Refer to "Upholstery Components" Elsewhere)	Ref
3	• 028-0139-XX	• Upholstered Leg (* Specify Color)	1	8		Footboard Assembly (Refer to "Upholstery Components" Elsewhere)	Ref
4	• 028-0138-XX	• Upholstered Footboard (* Specify Color)	1				Re

* Click on the Color Selector link above to see available colors.

Always Specify Model & Serial Number

Upholstery Components

SECTION VI PARTS LIST



MA27702

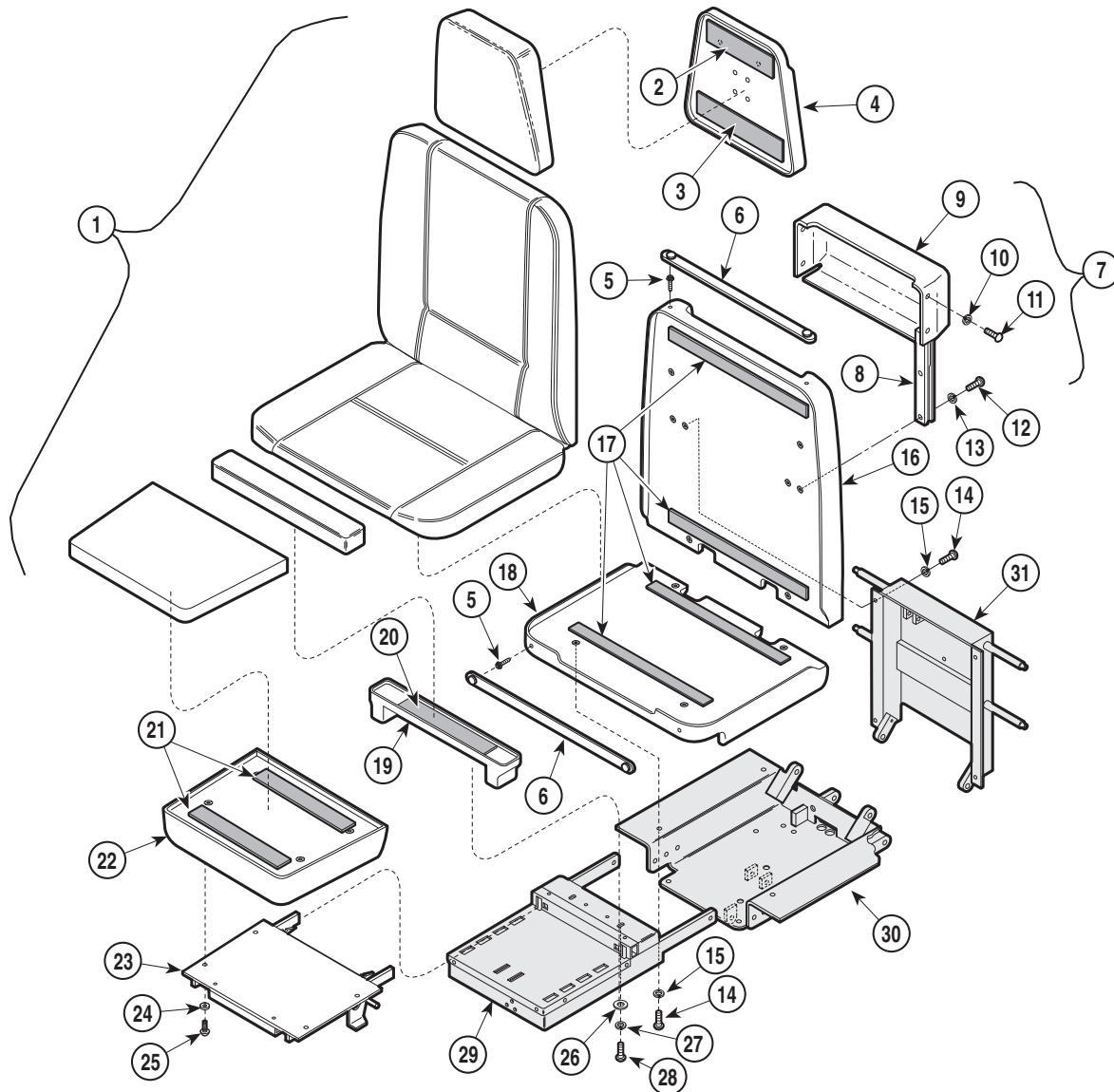
Used on units with Serial Number AY1000 thru AY1005

Item	Part No.	Description	Qty.	Item	Part No.	Description	Qty.
1		Upholstery (Refer to "Upholstery Set" Elsewhere)	Ref	16	029-1274-00	Backrest Assembly	1
2	053-0131-08	Velcro	2	17	053-0131-04	Velcro	4
3		Back Weldment (Refer to "Back Components" Elsewhere)	Ref	18	029-1275-00	Seat Cover Assembly	2
4	029-0464-00	Headboard Assembly	1	19	029-0574-00	Leg Board Cover	1
5	016-0022-00	Stud	4	20	053-0131-08	Velcro	1
6	029-0407-00	Paper Tear Strip	2	21	053-0131-02	Velcro	2
7	N.L.A.	Paper Holder Assembly (Includes Items 8 thru 11)	1	22	029-0585-00	Footboard Assembly	1
8	• N.L.A.	• Slide R.H. (Shown)	1	23		Footboard Weldment (Refer to "Footboard Components" Elsewhere)	Ref
	• N.L.A.	• Slide L.H.	1	24	045-0001-03	Lockwasher	4
9	• 053-0209-00	• Paper Roll Holder	1	25	040-0250-44	Screw	4
10	• 045-0001-39	• Washer	4	26	045-0001-04	Washer	2
11	• 040-0008-29	• Screw	4	27	045-0001-00	Washer	2
12	040-0008-31	Screw	6	28	040-0010-43	Screw	2
13	045-0001-10	Lockwasher	6	29		Foot Extension (Refer to "Foot Extension Components" Elsewhere)	Ref
14	040-0250-63	Screw	8	30		Seat Weldment (Refer to "Seat Components" Elsewhere)	Ref
15	045-0001-23	Lockwasher	8				

"N.L.A. denotes "No Longer Available
Always Specify Model & Serial Number

Upholstery Components

SECTION VI PARTS LIST



MA277703

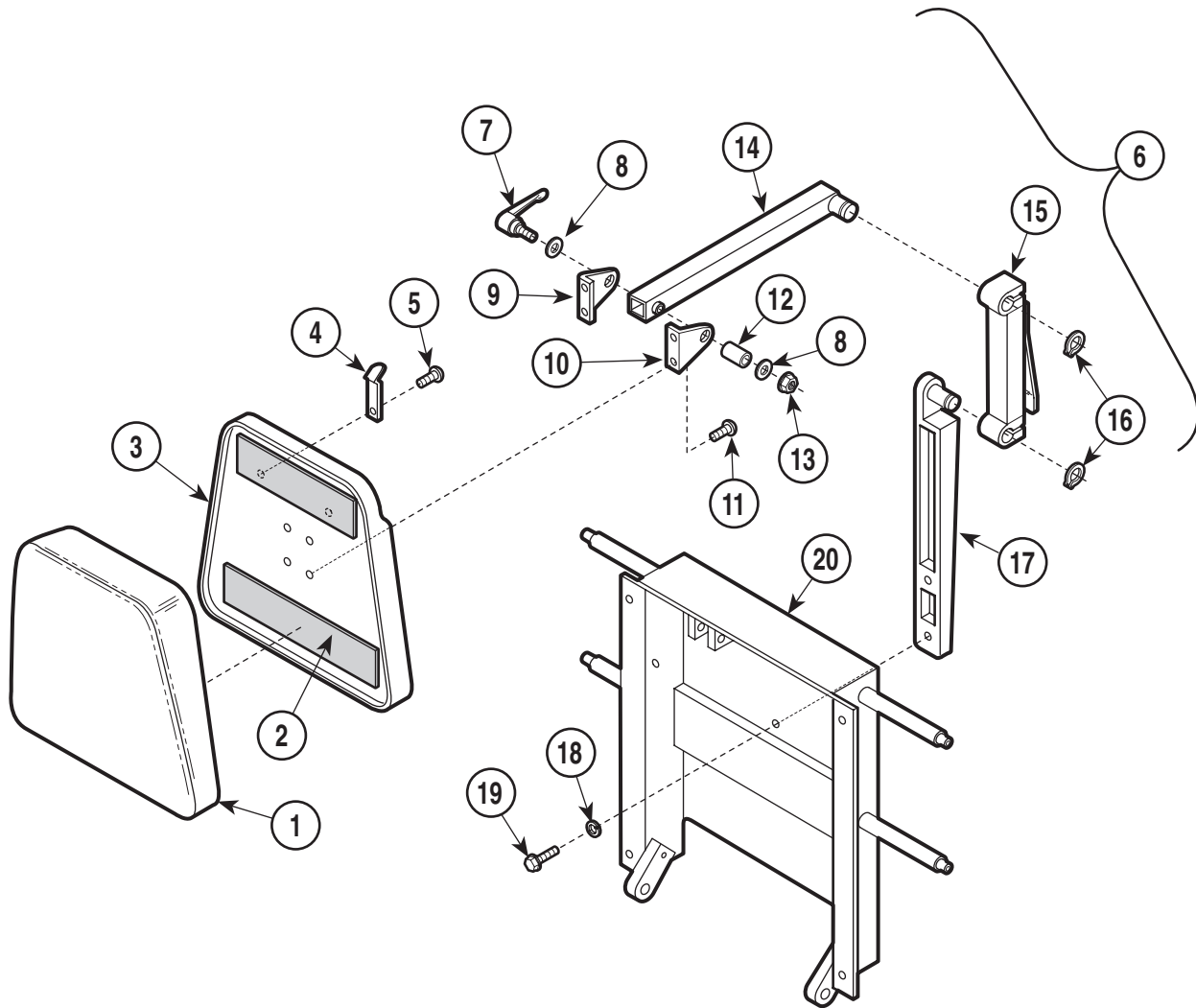
Used on units with Serial Number AY1006 thru Present

Item	Part No.	Description	Qty.	Item	Part No.	Description	Qty.
1		Upholstery (Refer to "Upholstery Set" Elsewhere)	Ref	17	053-0131-04	Velcro	4
2	053-0131-08	Velcro	1	18	029-1275-00	Seat Cover Assembly	2
3	053-0131-02	Velcro	1	19	029-0574-00	Leg Board Cover	1
4	029-0699-00	Headboard Assembly	1	20	053-0131-08	Velcro	1
5	016-0022-00	Stud	4	21	053-0131-02	Velcro	2
6	029-0407-00	Paper Tear Strip	2	22	029-0585-00	Footboard Assembly	1
7	N.L.A.	Paper Holder Assembly (Includes Items 8 thru 11)	1	23		Footboard Weldment (Refer to "Footboard Components" Elsewhere)	Ref
8	N.L.A.	Slide R.H. (Shown)	1	24	045-0001-03	Lockwasher	4
	N.L.A.	Slide L.H.	1	25	040-0250-44	Screw	4
9	053-0209-00	Paper Roll Holder	1	26	045-0001-04	Washer	2
10	045-0001-39	Washer	4	27	045-0001-00	Washer	2
11	040-0008-29	Screw	4	28	040-0010-43	Screw	2
12	040-0008-31	Screw	6	29		Foot Extension (Refer to "Foot Extension Components" Elsewhere)	Ref
13	045-0001-10	Lockwasher	6	30		Seat Weldment (Refer to "Seat Components" Elsewhere)	Ref
14	040-0250-63	Screw	8	31		Back Weldment (Refer to "Back Components" Elsewhere)	Ref
15	045-0001-23	Lockwasher	8				
16	029-1274-00	Backrest Assembly	1				

"N.L.A. denotes "No Longer Available
Always Specify Model & Serial Number

Headrest Components

SECTION VI PARTS LIST



MA258700

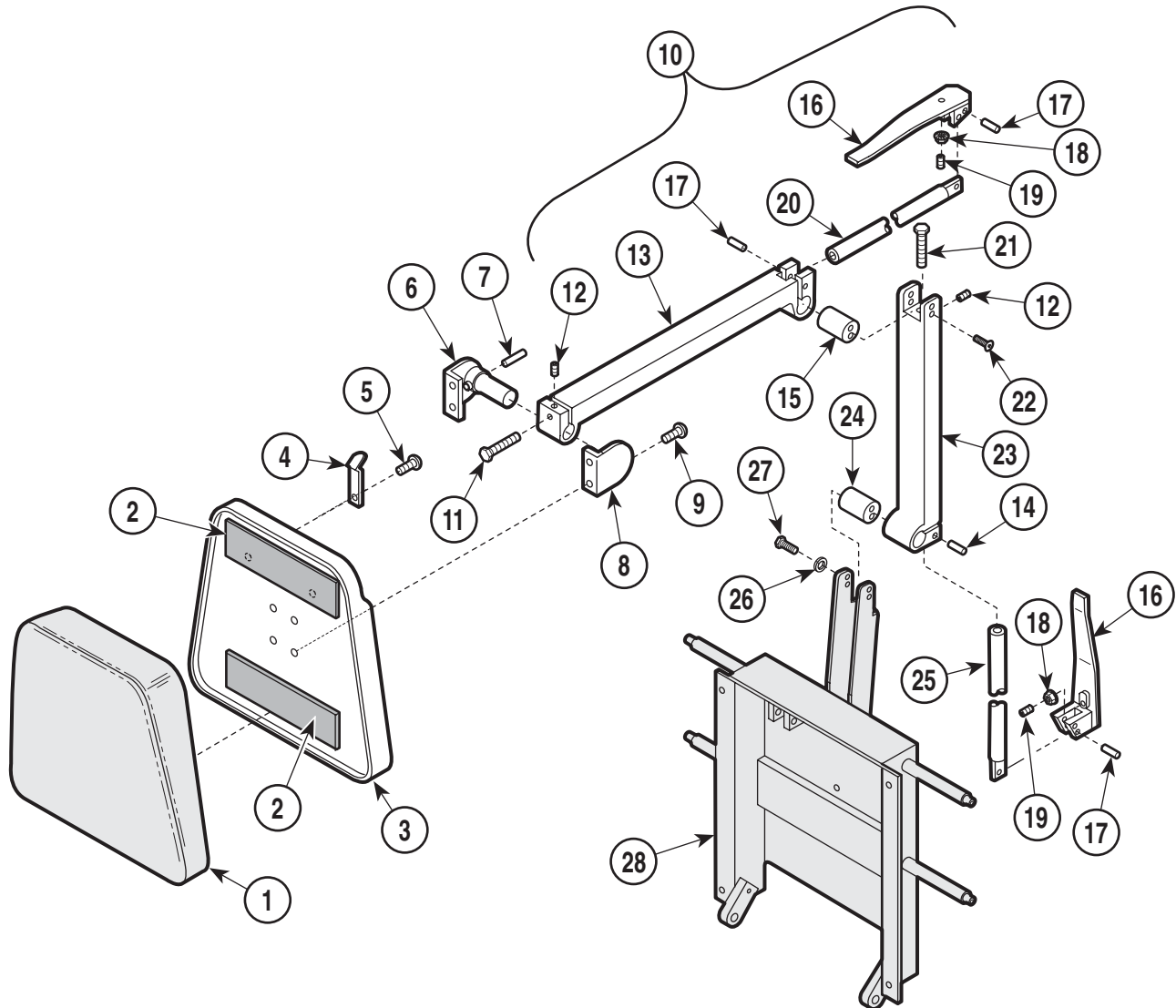
Used on units with Serial Number AY1000 thru AY1005

Item	Part No.	Description	Qty.	Item	Part No.	Description	Qty.
1		Upholstered Headrest (Refer to "Upholstered Components" Elsewhere)	Ref	10	• (N.S.P.)	• Headlock Bracket (Large)	1
2	053-0131-08	Velcro	2	11	• (N.S.P.)	• Screw	4
3		Headboard Assembly (Refer to "Upholstered Components" Elsewhere)	Ref	12	• (N.S.P.)	• Lock Tube	1
4	058-0001-00	Bag Clip	2	13	• (N.S.P.)	• Nut	1
5	040-0006-00	Screw	2	14	• (N.S.P.)	• Headrest Top Arm	1
6	(N.S.P.)	Arm Headlock Assembly (Includes Items 7 thru 17)	1	15	• (N.S.P.)	• Headlock Assembly	1
7	• (N.S.P.)	• Handle	1	16	• (N.S.P.)	• Retaining Ring	2
8	• (N.S.P.)	• Bearing Washer	2	17	• (N.S.P.)	• Headrest Bottom Arm	1
9	• (N.S.P.)	• Bracket Weldment	1	18	045-0001-09	Lockwasher	2
				19	040-0375-25	Screw	4
				20		Back Weldment (Refer to "Back Components" Elsewhere)	Ref

(N.S.P.) Denotes "Non Servicable Part"
Always Specify Model & Serial Number

Headrest Components

SECTION VI PARTS LIST



MA258802

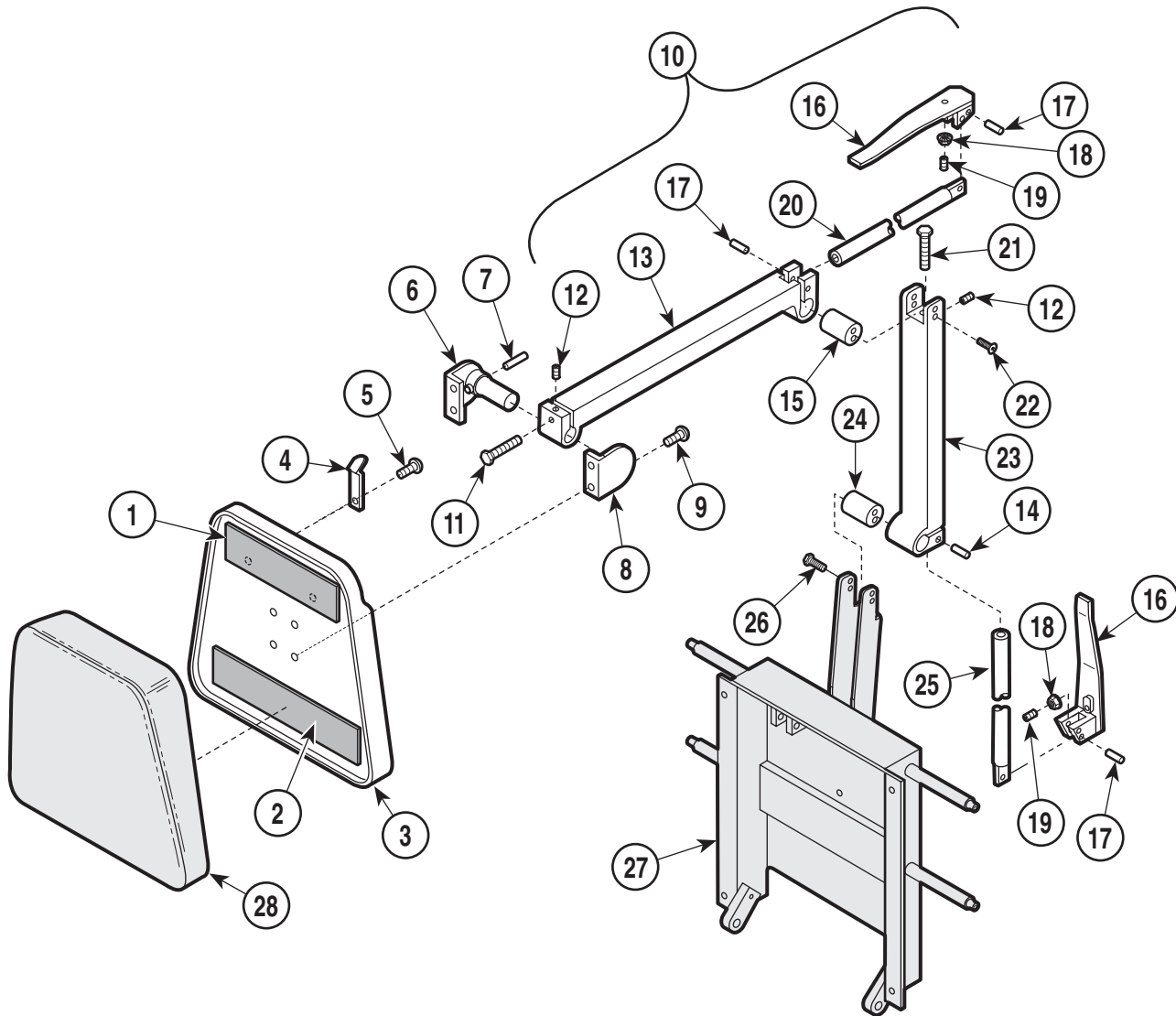
Used on units with Serial Number AY1006 thru AY3704

Item	Part No.	Description	Qty.	Item	Part No.	Description	Qty.
1		Upholstered Headrest (Refer to "Upholstered Components" Elsewhere)	Ref	14	• (N.S.P.)	• Dowel Pin	2
2	053-0131-08	Velcro	2	15	• (N.S.P.)	• Pivot Bar	1
3		Headboard Assembly (Refer to "Upholstery Components" Elsewhere)	Ref	16	• (N.S.P.)	• Head Pivot Handle	2
4	058-0001-03	Bag Clip	2	17	• (N.S.P.)	• Dowel Pin	4
5	040-0006-00	Screw	2	18	• (N.S.P.)	• Nut	2
6	029-0103-00	Headboard Pivot Assy. (Incl. Item 7)	1	19	• (N.S.P.)	• Screw	2
7	• 042-0001-00	• Roll Pin	1	20	• (N.S.P.)	• Draw Bar	1
8	030-0124-00	Headboard Pivot Assembly	1	21	• (N.S.P.)	• Bolt	1
9	040-0010-23	Screw	4	22	• (N.S.P.)	• Screw	4
10	029-1100-00	Two Arm Headlock Assembly (Includes Items 11 thru 25)	1	23	• (N.S.P.)	• Base Headlock	1
11	• (N.S.P.)	• Screw	1	24	• (N.S.P.)	• Pivot Bar	1
12	• (N.S.P.)	• Set Screw	2	25	• (N.S.P.)	• Draw Bar	1
13	• (N.S.P.)	• Headlock	1	26	045-0001-05	Lockwasher	4
				27	040-0250-10	Bolt	4
				28		Back Weldment (Refer to "Back Components" Elsewhere)	Ref

(N.S.P.) Denotes "Non Servicable Part"
Always Specify Model & Serial Number

Headrest Components

SECTION VI PARTS LIST



MA258801

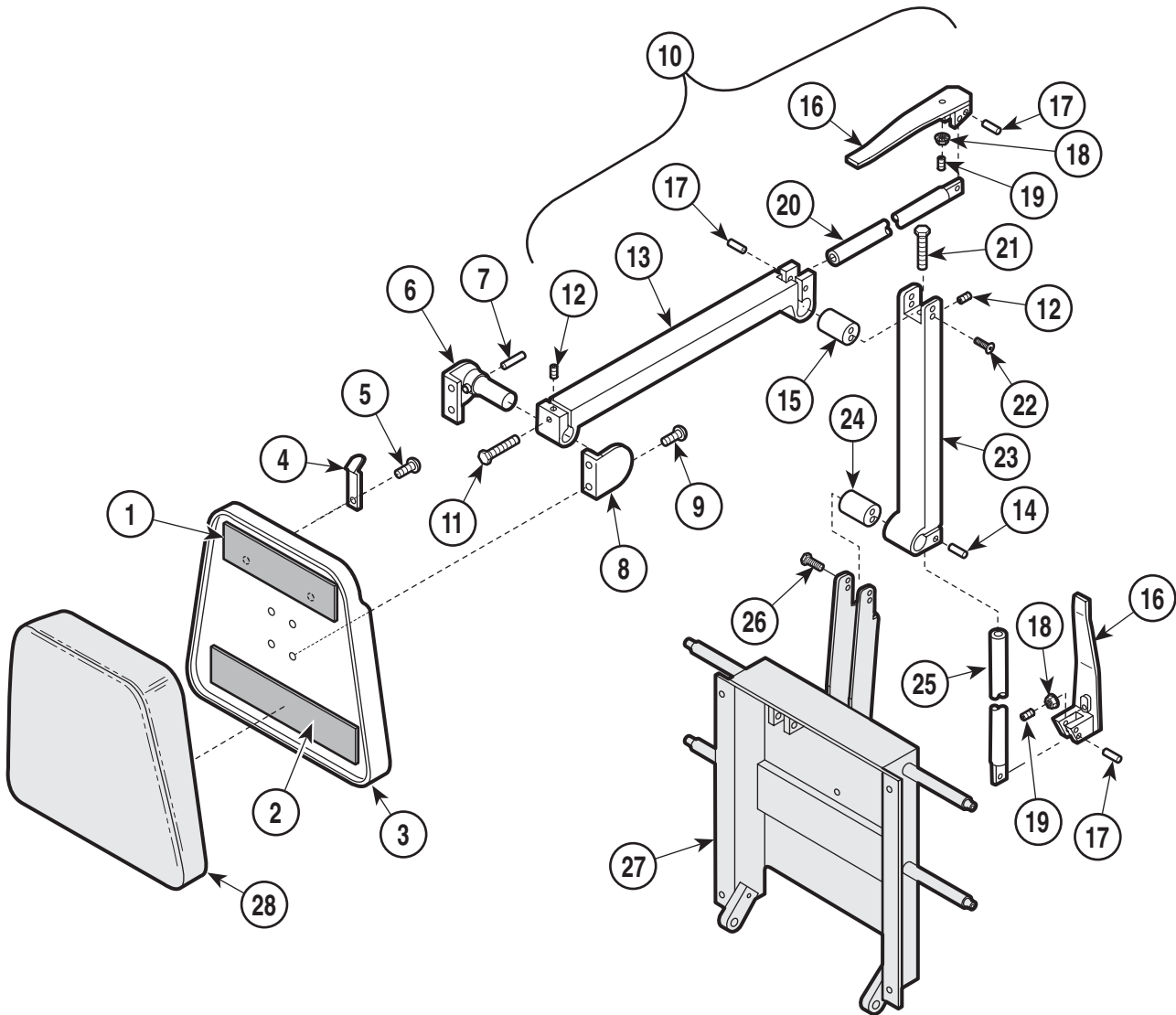
Used on units with Serial Number AY3705 thru AY3805

Item	Part No.	Description	Qty.	Item	Part No.	Description	Qty.
1	053-0131-08	Velcro	1	15	• (N.S.P.)	• Pivot Bar	1
2	053-0131-02	Velcro	1	16	• (N.S.P.)	• Head Pivot Handle	2
3		Headboard Assembly (Refer to "Upholstery Components" Elsewhere)	Ref	17	• (N.S.P.)	• Dowel Pin	4
4	058-0001-03	Bag Clip	2	18	• (N.S.P.)	• Nut	2
5	040-0006-00	Screw	2	19	• (N.S.P.)	• Screw	2
6	029-0103-02	Headboard Pivot Assembly	1	20	• (N.S.P.)	• Draw Bar	1
7	• 042-0001-00	• Roll Pin	1	21	• (N.S.P.)	• Bolt	1
8	030-0124-03	Headboard Pivot Assembly	1	22	• (N.S.P.)	• Screw	4
9	040-0010-23	Screw	4	23	• (N.S.P.)	• Base Headlock	1
10	029-1100-02	Two Arm Headlock Assembly (Includes Items 11 thru 25)	1	24	• (N.S.P.)	• Pivot Bar	1
11	• (N.S.P.)	• Screw	1	25	• (N.S.P.)	• Draw Bar	1
12	• (N.S.P.)	• Set Screw	2	26	040-0250-88	Screw	4
13	• (N.S.P.)	• Headlock	1	27		Back Weldment (Refer to "Back Components" Elsewhere)	Ref
14	• (N.S.P.)	• Dowel Pin	2	28		Upholstered Headrest (Refer to "Upholstered Components" Elsewhere)	Ref

(N.S.P.) Denotes "Non Servicable Part"
Always Specify Model & Serial Number

Headrest Components

SECTION VI PARTS LIST



MA258801

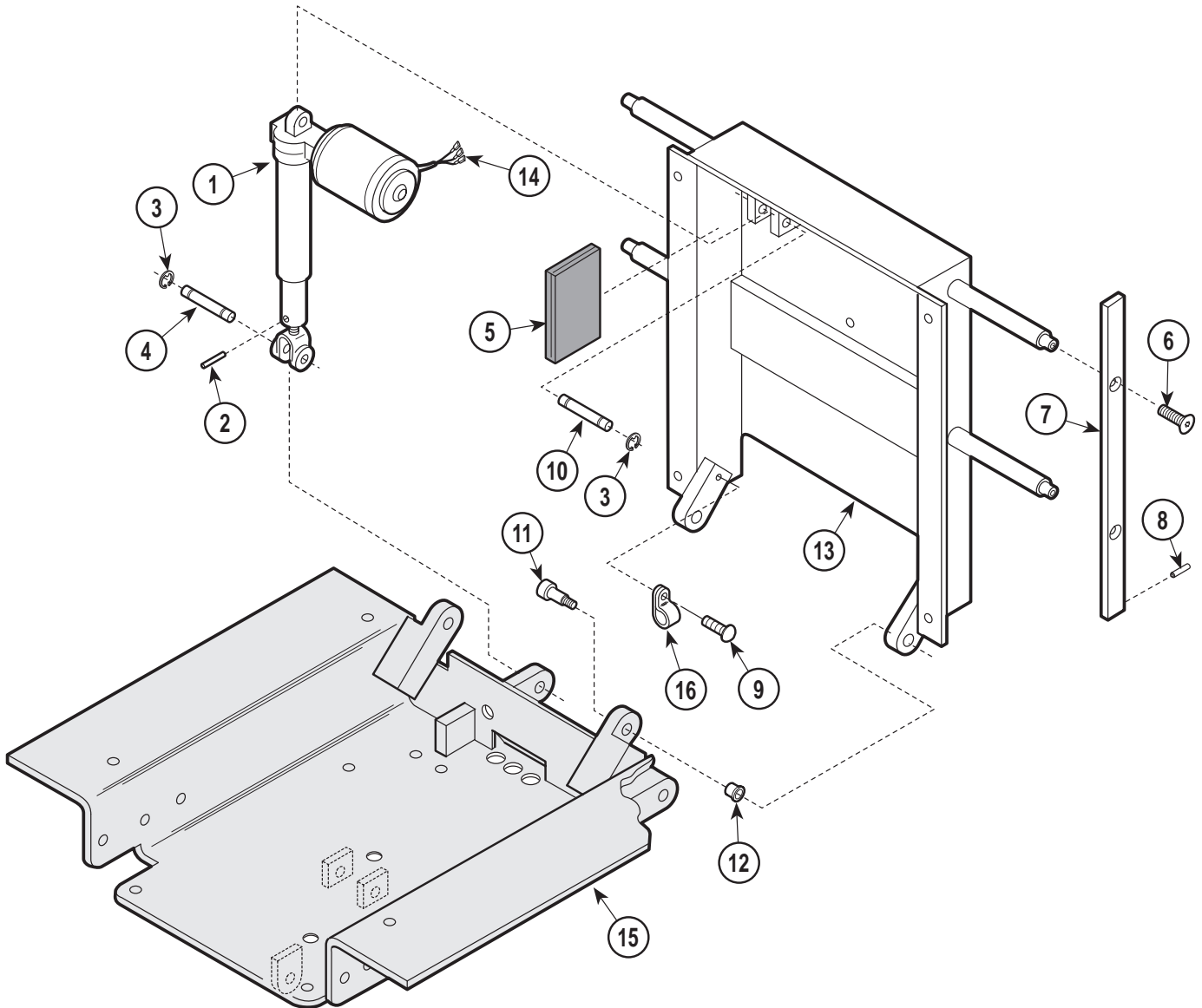
Used on units with Serial Number AY3806 thru Present

Item	Part No.	Description	Qty.	Item	Part No.	Description	Qty.
1	053-0131-08	Velcro	1	15	• (N.S.P.)	• Pivot Bar	1
2	053-0131-02	Velcro	1	16	• (N.S.P.)	• Head Pivot Handle	2
3		Headboard Assembly (Refer to "Upholstery Components" Elsewhere)	Ref	17	• (N.S.P.)	• Dowel Pin	4
4	058-0001-03	Bag Clip	2	18	• (N.S.P.)	• Nut	2
5	040-0006-00	Screw	2	19	• (N.S.P.)	• Screw	2
6	029-0103-02	Headboard Pivot Assembly	1	20	• (N.S.P.)	• Draw Bar	1
7	• 042-0001-00	• Roll Pin	1	21	• (N.S.P.)	• Bolt	1
8	030-0124-03	Headboard Pivot Assembly	1	22	• (N.S.P.)	• Screw	4
9	040-0010-23	Screw	4	23	• (N.S.P.)	• Base Headlock	1
10	029-1100-04	Two Arm Headlock Assembly (Includes Items 11 thru 25)	1	24	• (N.S.P.)	• Pivot Bar	1
11	• (N.S.P.)	• Screw	1	25	• (N.S.P.)	• Draw Bar	1
12	• (N.S.P.)	• Set Screw	2	26	040-0250-88	Screw	4
13	• (N.S.P.)	• Headlock	1	27		Back Weldment (Refer to "Back Components" Elsewhere)	Ref
14	• (N.S.P.)	• Dowel Pin	2	28		Upholstered Headrest (Refer to "Upholstered Components" Elsewhere)	Ref

(N.S.P.) Denotes "Non Servicable Part"
Always Specify Model & Serial Number

Back Components

SECTION VI PARTS LIST



MA295900

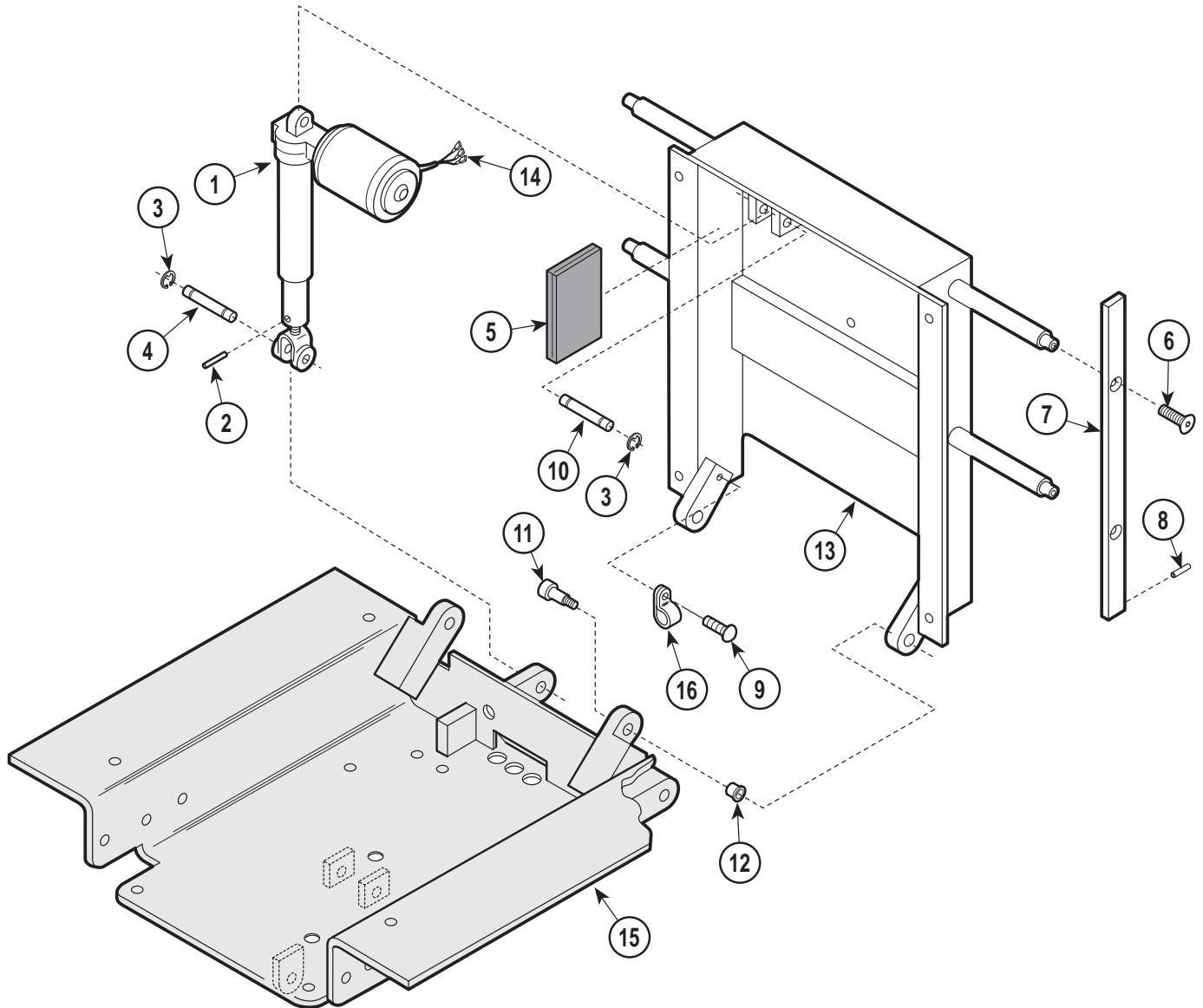
Used on units with Serial Number AY1000 thru AY1005

Item	Part No.	Description	Qty.	Item	Part No.	Description	Qty.
1		Back Actuator (Refer to "Back and Foot Actuator Assembly" Elsewhere)	Ref	10	042-0048-02	Clevis Pin	1
2	042-0001-07	Roll Pin	1	11	042-0014-05	Shoulder Screw (Apply Loctite #042-0025-00)	2
3	042-0007-02	E-Ring	4	12	016-0131-04	Flange Bearing	2
4	042-0048-01	Clevis Pin	1	13	030-0568-00	Back Weldment	1
5	054-0085-04	Sound Damp	4	14	015-0312-00	Terminal	3
6	040-0375-26	Screw	4	15		Seat Weldment (Refer to "Seat Components" Elsewhere)	Ref
7	051-0377-00	Siderail	2	16	015-0001-00	Wire Clip	1
8	042-0001-02	Roll Pin	2				
9	040-0010-47	Screw	1				

Always Specify Model & Serial Number

Back Components

SECTION VI PARTS LIST



MA295900

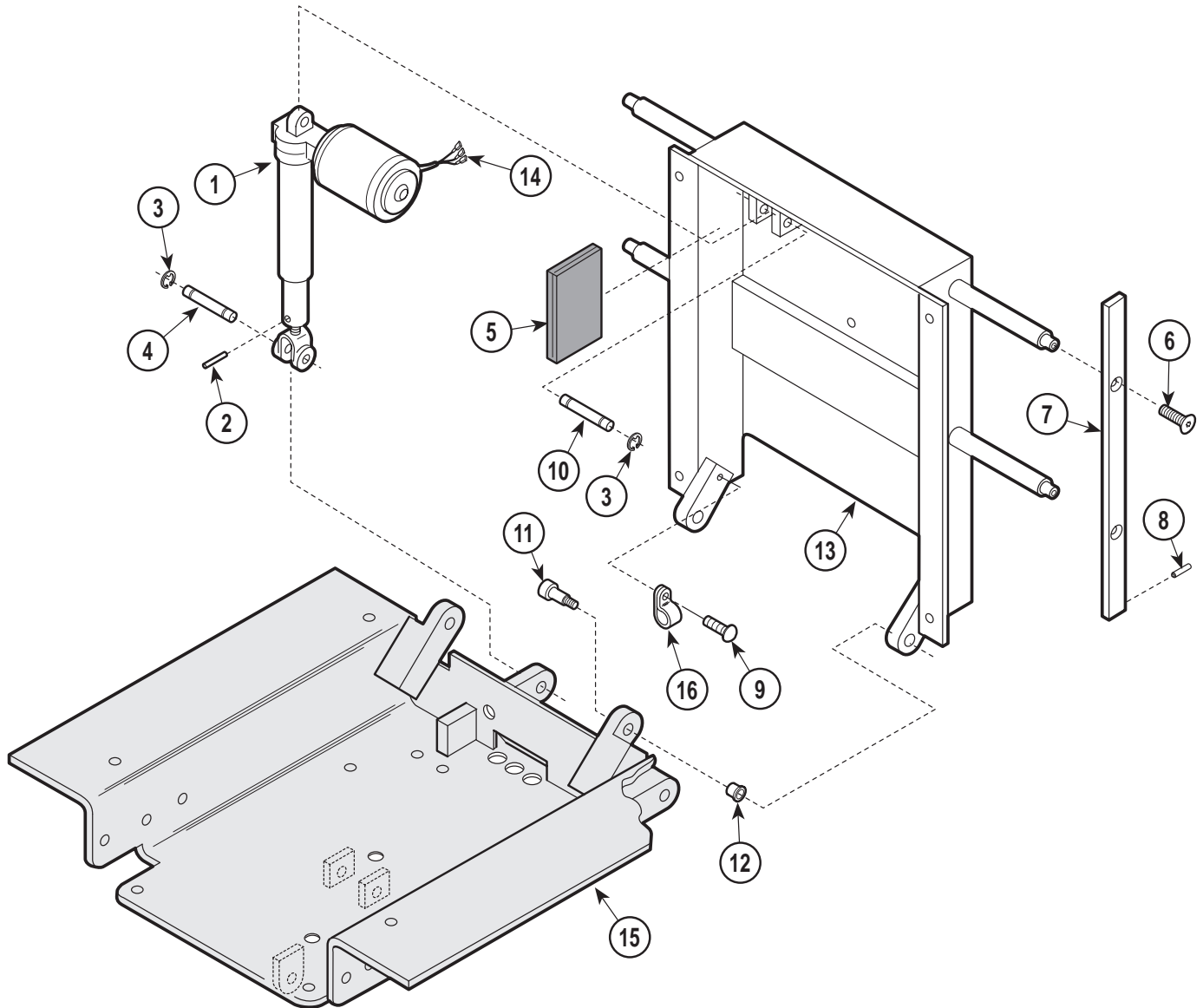
Used on units with Serial Number AY1006 thru AY3704

Item	Part No.	Description	Qty.	Item	Part No.	Description	Qty.
1		Back Actuator (Refer to "Back and Foot Actuator Assembly" Elsewhere)	Ref	10	042-0048-02	Clevis Pin	1
2	042-0001-07	Roll Pin	1	11	042-0014-05	Shoulder Screw (Apply Loctite #042-0025-00)	2
3	042-0007-02	E-Ring	4	12	016-0131-04	Flange Bearing	2
4	042-0048-01	Clevis Pin	1	13	030-0713-00	Back Weldment	1
5	054-0085-04	Sound Damp	4	14	015-0312-00	Terminal	3
6	040-0375-26	Screw	4	15		Seat Weldment (Refer to "Seat Components" Elsewhere)	Ref
7	051-0377-00	Siderail	2	16	015-0001-00	Wire Clip	1
8	042-0001-02	Roll Pin	2				
9	040-0010-47	Screw	1				

Always Specify Model & Serial Number

Back Components

SECTION VI PARTS LIST



MA295900

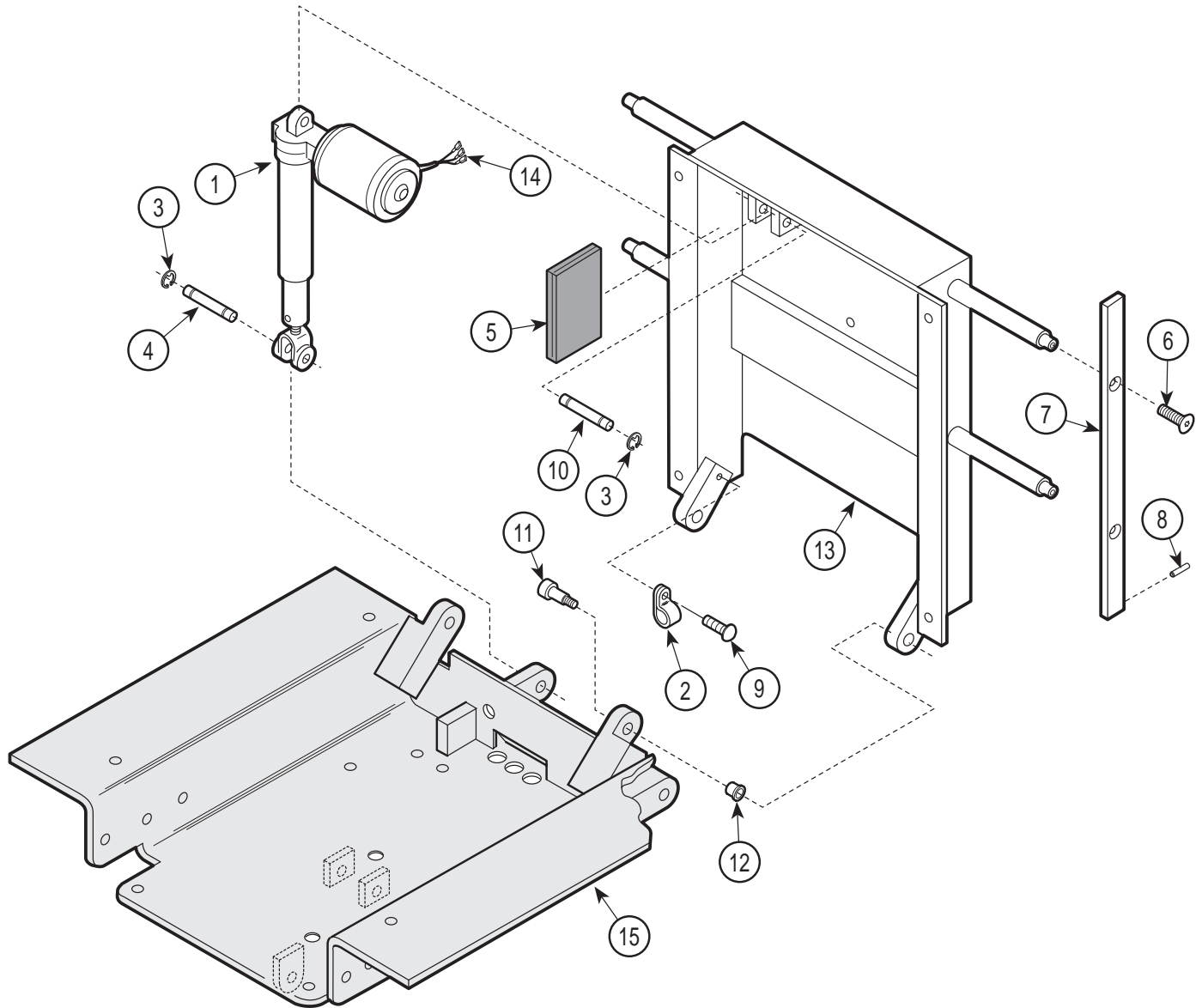
Used on units with Serial Number AY3705 thru AY3805

Item	Part No.	Description	Qty.	Item	Part No.	Description	Qty.
1		Back Actuator (Refer to "Back and Foot Actuator Assembly" Elsewhere)	Ref	9	040-0010-47	Screw	1
2	042-0001-07	Roll Pin	1	10	042-0048-02	Clevis Pin	1
3	042-0007-02	E-Ring	4	11	042-0014-05	Shoulder Screw (Apply Loctite #042-0025-00)	2
4	042-0048-01	Clevis Pin	1	12	016-0131-04	Flange Bearing	2
5	054-0085-04	Sound Damp	4	13	030-0713-01	Back Weldment	1
6	040-0375-26	Screw	4	14	015-0312-00	Terminal	3
7	051-0377-00	Siderail (18" [Standard])	2	15		Seat Weldment (Refer to "Seat Components" Elsewhere)	Ref
	051-0377-02	Siderail (12" [Special])	2	16	015-0001-00	Wire Clip	1
8	042-0001-02	Roll Pin	2				

Always Specify Model & Serial Number

Back Components

SECTION VI PARTS LIST



MA295900

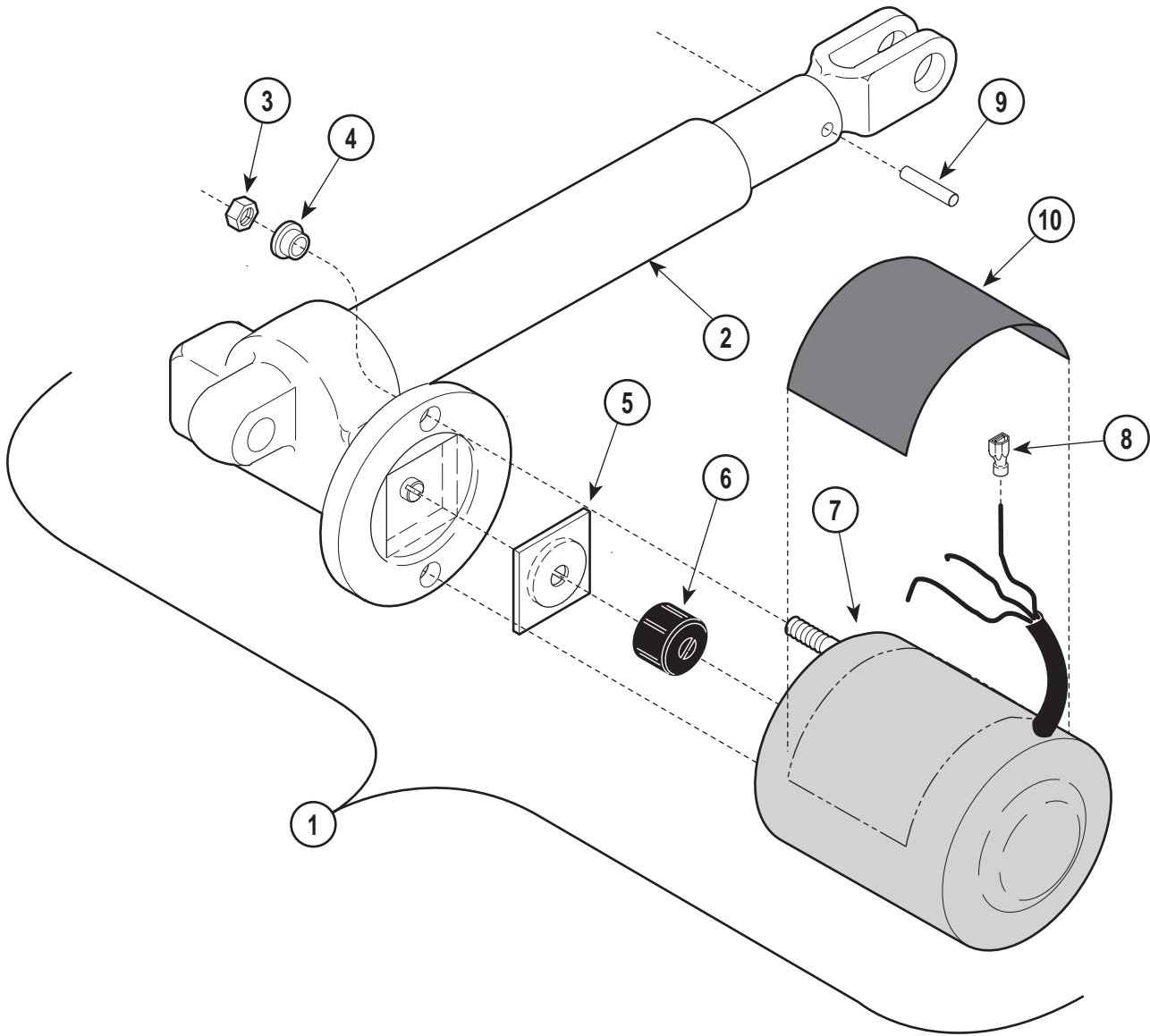
Used on units with Serial Number AY3806 thru Present

Item	Part No.	Description	Qty.	Item	Part No.	Description	Qty.
1	002-0590-00	Back Actuator	1	10	042-0048-02	Clevis Pin	1
2	015-0001-00	Wire Clip	1	11	042-0014-05	Shoulder Screw (Apply Loctite #042-0025-00)	2
3	042-0007-02	E-Ring	4	12	016-0131-04	Flange Bearing	2
4	042-0048-01	Clevis Pin	1	13	030-0713-01	Back Weldment	1
5	054-0085-04	Sound Damp	4	14	015-0312-00	Terminal	3
6	040-0375-26	Screw	4	15		Seat Weldment (Refer to "Seat Components" Elsewhere)	Ref
7	051-0377-00	Siderail (18" [Standard])	2	16	015-0001-00	Wire Clip	1
8	042-0001-02	Siderail (12" [Special])	2				
9	040-0010-47	Roll Pin	2				
		Screw	1				

Always Specify Model & Serial Number

Back and Foot Actuator Assembly

SECTION VI PARTS LIST



MA294800

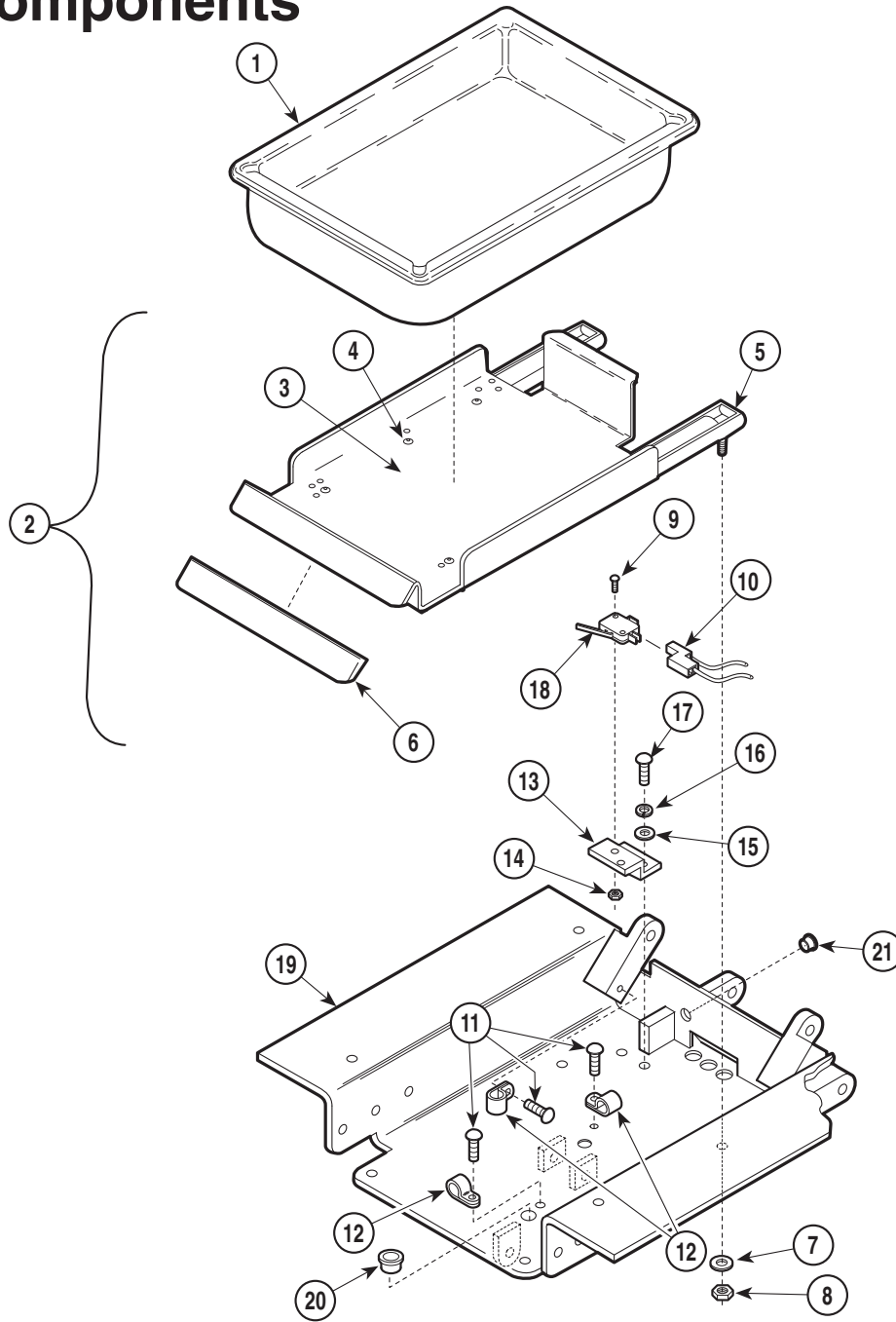
Used on units with Serial Number AY1000 thru AY3805

Item	Part No.	Description	Qty.	Item	Part No.	Description	Qty.
1	002-0215-00	Actuator Assembly (Includes Items 2 thru 8)	1	6	•016-0509-00	• Motor Coupler	1
2	•016-0233-04	• Actuator (Less Motor)	1	7	•002-0574-00	• Motor (Less Terminals)	1
3	•	• Nut	2	8	•015-0312-00	• Terminal	3
4	•053-0198-00	• Shoulder Washer	2	9	042-0001-14	Roll Pin	1
5	•016-0237-00	• Actuator Brake	1	10	061-0135-00	Caution Label	1

Always Specify Model & Serial Number

Seat Components

SECTION VI PARTS LIST



MA258501

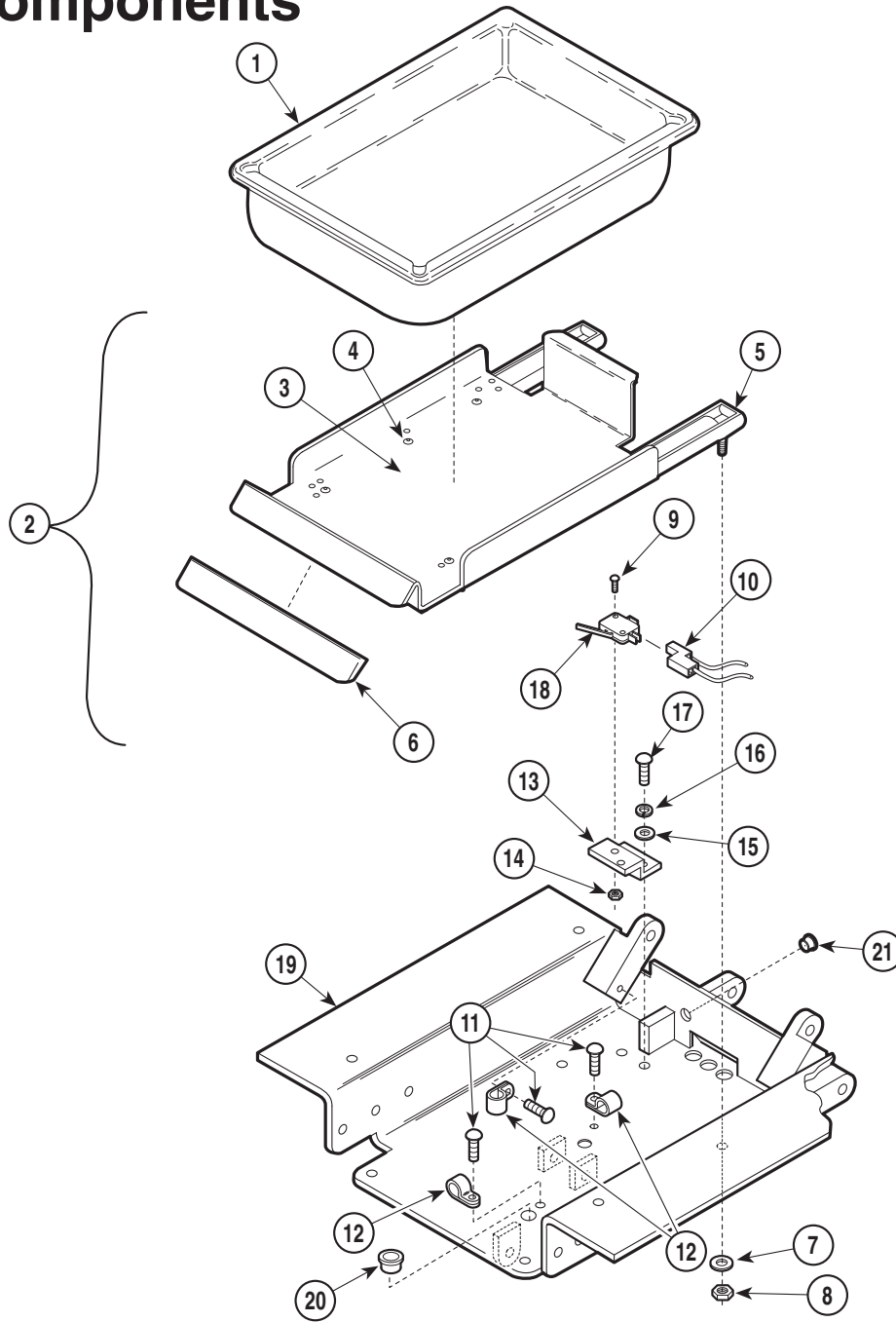
Used on units with Serial Number AY1000 thru AY1005

Item	Part No.	Description	Qty.	Item	Part No.	Description	Qty.
1	016-0373-00	Treatment Pan	1	11	040-0010-47	Screw	3
2	029-0556-00	Pan Holder Assembly (Includes Items 3 thru 6)	1	12	015-0001-00	Wire Clip	3
3	• 050-1784-00	• Pan Holder	1	13	050-1127-00	Switch Bracket	1
4	• 042-0010-03	• Pop Rivet	6	14	041-0004-01	Nut	2
5	• 016-0242-00	• Pan Slide	2	15	045-0001-15	Washer	2
6	• 053-0349-01	• Pan Holder Cover (Apply Loctite #042-0076-00)	1	16	045-0001-04	Lockwasher	2
7	045-0001-39	Washer	4	17	040-0010-47	Screw	2
8	041-0008-02	Nut	4	18	015-0425-00	Switch	1
9	040-0004-09	Screw	2	19	030-0613-00	Seat Weldment	1
10		Wire Connector (Refer to "Wiring Diagram" Elsewhere [Section 5])	Ref	20	053-0068-08	Snap Bushing	3
				21	053-0068-10	Snap Bushing	1

Always Specify Model & Serial Number

Seat Components

SECTION VI PARTS LIST



MA258501

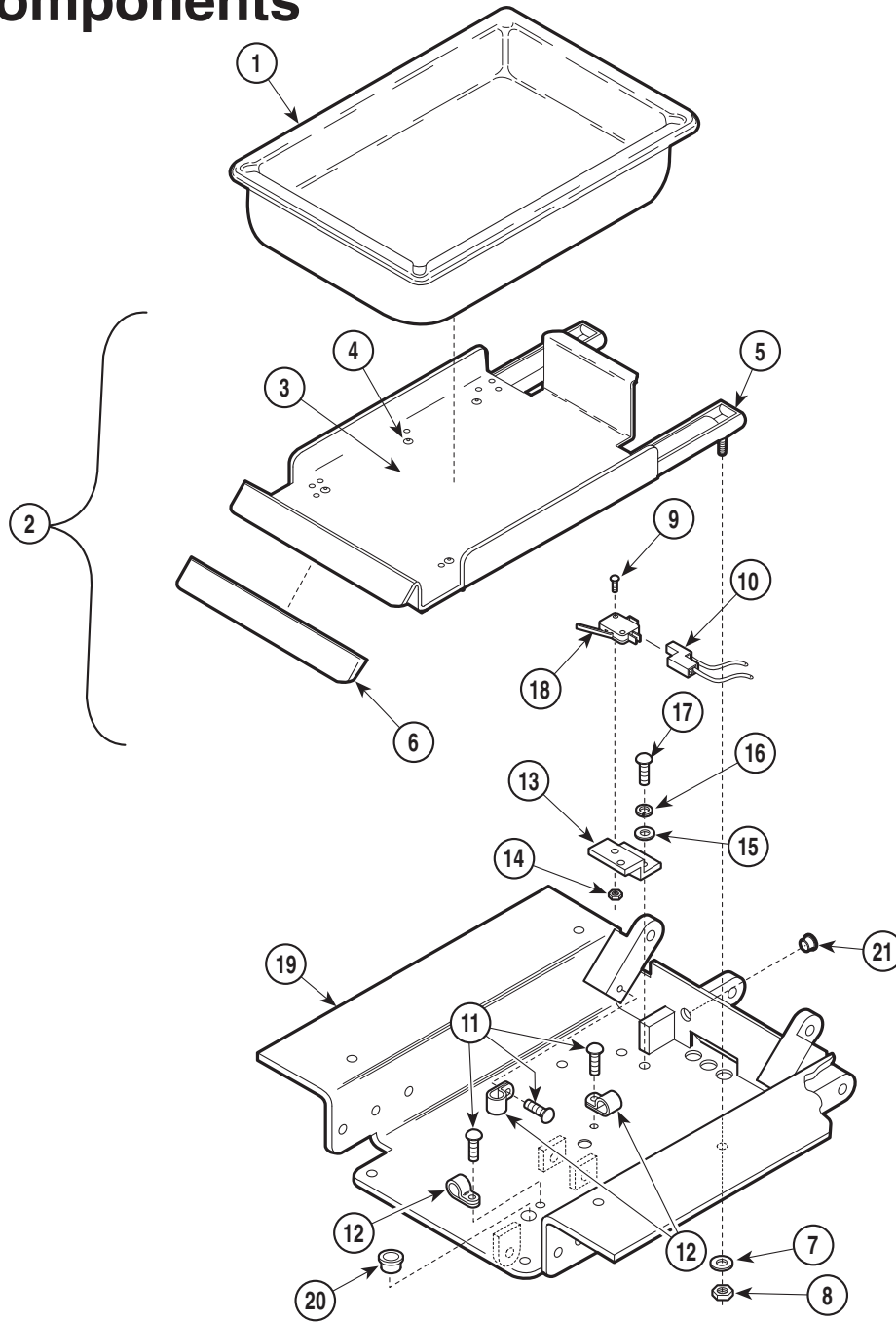
Used on units with Serial Number AY1006 thru AY3704

Item	Part No.	Description	Qty.	Item	Part No.	Description	Qty.
1	016-0373-00	Treatment Pan	1	11	040-0010-47	Screw	3
2	029-0556-00	Pan Holder Assembly (Includes Items 3 thru 6)	1	12	015-0001-00	Wire Clip	3
3	• 050-1784-00	• Pan Holder	1	13	050-1127-00	Switch Bracket	1
4	• 042-0010-03	• Pop Rivet	6	14	041-0004-01	Nut	2
5	• 016-0242-00	• Pan Slide	2	15	045-0001-15	Washer	2
6	• 053-0349-01	• Pan Holder Cover (Apply Loctite #042-0076-00)	1	16	045-0001-04	Lockwasher	2
7	045-0001-39	Washer	4	17	040-0010-47	Screw	2
8	041-0008-02	Nut	4	18	015-0425-00	Switch	1
9	040-0004-09	Screw	2	19	030-0714-00	Seat Weldment	1
10		Wire Connector (Refer to "Wiring Diagram" Elsewhere [Section 5])	Ref	20	053-0068-08	Snap Bushing	3
				21	053-0068-10	Snap Bushing	1

Always Specify Model & Serial Number

Seat Components

SECTION VI PARTS LIST



MA258501

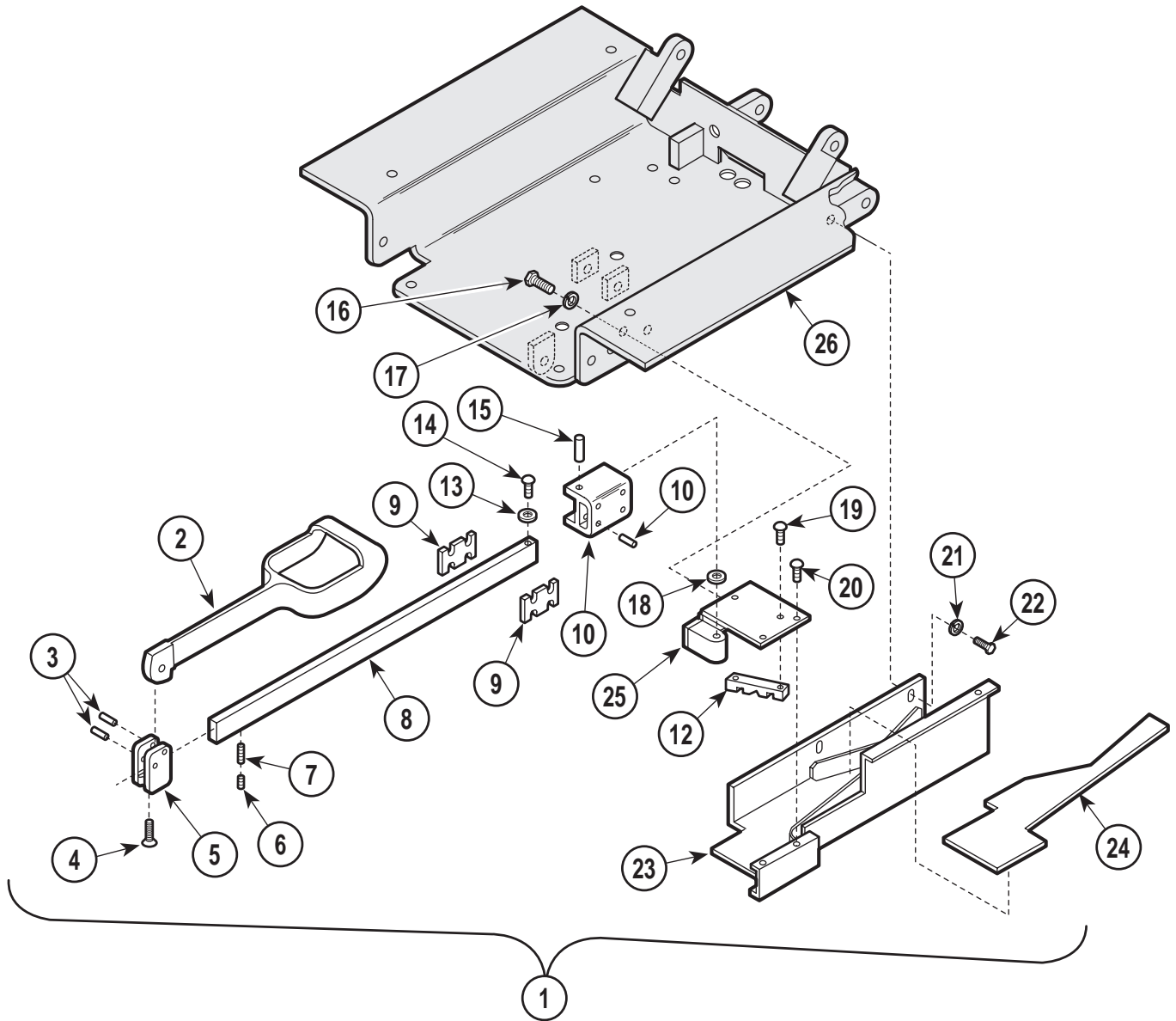
Used on units with Serial Number AY3705 thru Present

Item	Part No.	Description	Qty.	Item	Part No.	Description	Qty.
1	016-0373-00	Treatment Pan	1	11	040-0010-47	Screw	3
2	029-0556-00	Pan Holder Assembly (Includes Items 3 thru 6)	1	12	015-0001-00	Wire Clip	3
3	• 050-1784-00	• Pan Holder	1	13	050-1127-00	Switch Bracket	1
4	• 042-0010-03	• Pop Rivet	6	14	041-0004-01	Nut	2
5	• 016-0242-00	• Pan Slide	2	15	045-0001-15	Washer	2
6	• 053-0349-01	• Pan Holder Cover (Apply Loctite #042-0076-00)	1	16	045-0001-04	Lockwasher	2
7	045-0001-39	Washer	4	17	040-0010-47	Screw	2
8	041-0008-02	Nut	4	18	015-0425-00	Switch	1
9	040-0004-09	Screw	2	19	030-0714-01	Seat Weldment	1
10		Wire Connector (Refer to "Wiring Diagram" Elsewhere [Section 5])	Ref	20	053-0068-08	Snap Bushing	3
				21	053-0068-10	Snap Bushing	1

Always Specify Model & Serial Number

Stirrup Assembly

SECTION VI PARTS LIST



MA258201

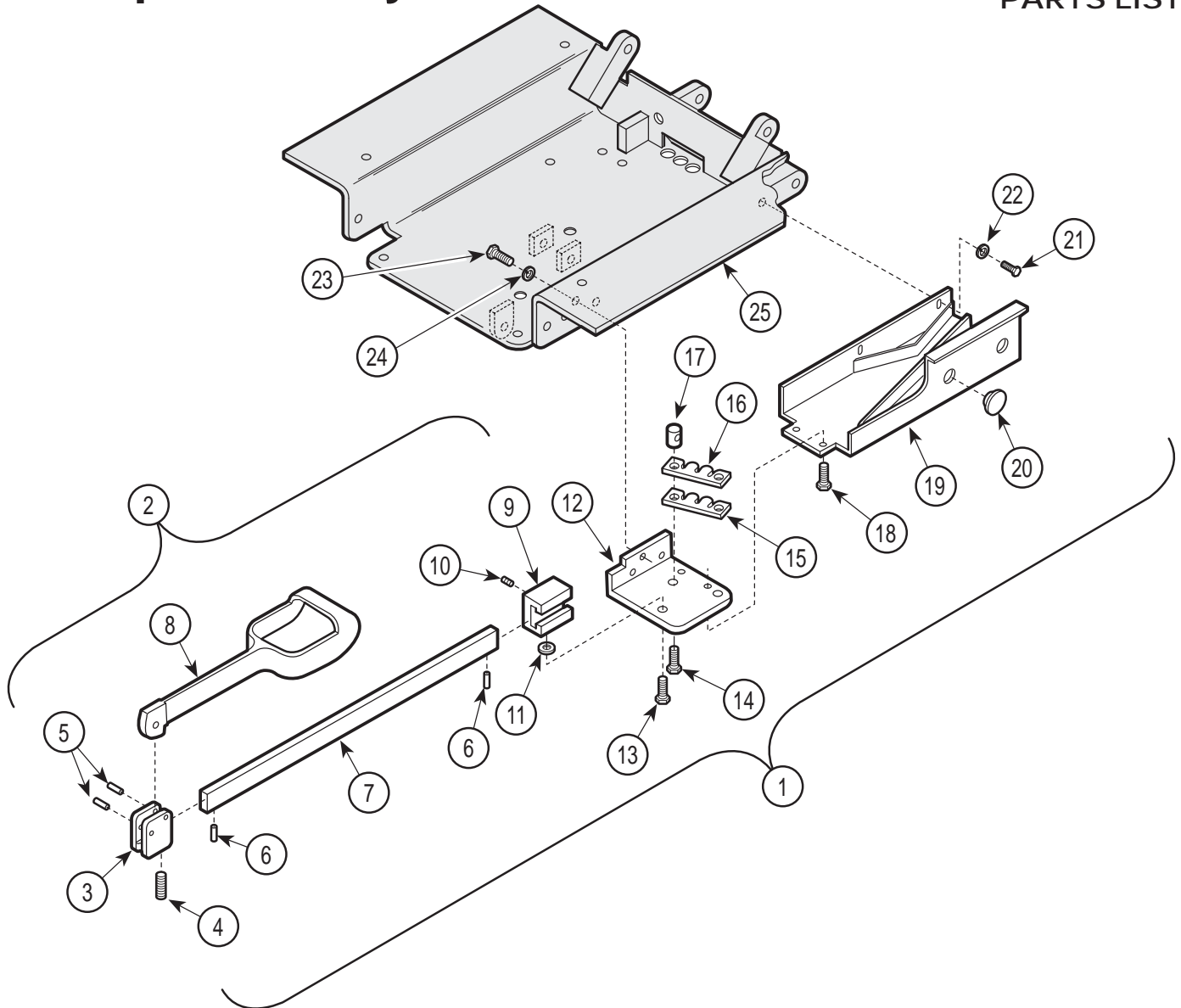
Used on units with Serial Number AY1000 thru AY1005

Item	Part No.	Description	Qty.	Item	Part No.	Description	Qty.
1	029-0579-00	Stirrup and Bracket Assy. - R.H. (Includes Items 2 thru 25 [Not Shown])	1	15	• 042-0001-13	• Roll Pin	1
	029-0579-01	Stirrup and Bracket Assy. - L.H. (Includes Items 2 thru 25 [Shown])	1	16	• 040-0375-20	• Screw	3
2	• 020-0001-01	• Stirrup	1	17	• 045-0001-24	• Lockwasher	3
3	• 042-0001-00	• Roll Pin	2	18	• 045-0007-02	• Washer Bearing	1
4	• 040-0250-33	• Screw	1	19	• 040-0012-28	• Screw	2
5	• 051-0417-00	• Pivot Block	1	20	• 040-0010-62	• Screw	2
6	• 040-0250-15	• Set Screw	1	21	• 045-0001-23	• Lockwasher	2
7	• 040-0250-26	• Set Screw	1	22	• 040-0250-10	• Screw	2
8	• 051-0394-00	• Stirrup Bar	1	23	• 030-0437-00	• Stirrup Weldment - R.H. (Not Shown)	1
9	• 053-0228-00	• Stirrup Spacer	2		• 030-0437-01	• Stirrup Weldment - L.H. (Shown)	1
10	• 021-0014-00	• Pivot Block	1	24	• 053-0278-00	• Stirrup Insert - R.H. (Not Shown)	1
11	• 042-0001-12	• Roll Pin	3		• 053-0278-01	• Stirrup Insert - L.H. (Shown)	1
12	• 051-0401-00	• Guide	1	25	• 030-0430-00	• Mount Weldment - R.H. (Not Shown)	1
13	• 053-0081-00	• Nylon Stop	2		• 030-0430-01	• Mount Weldment - L.H. (Shown)	1
14	• 040-0250-01	• Screw	1	26		Seat Weldment (Refer to "Seat Components" Elsewhere)	Ref

Always Specify Model & Serial Number

Stirrup Assembly

SECTION VI PARTS LIST



MA258301

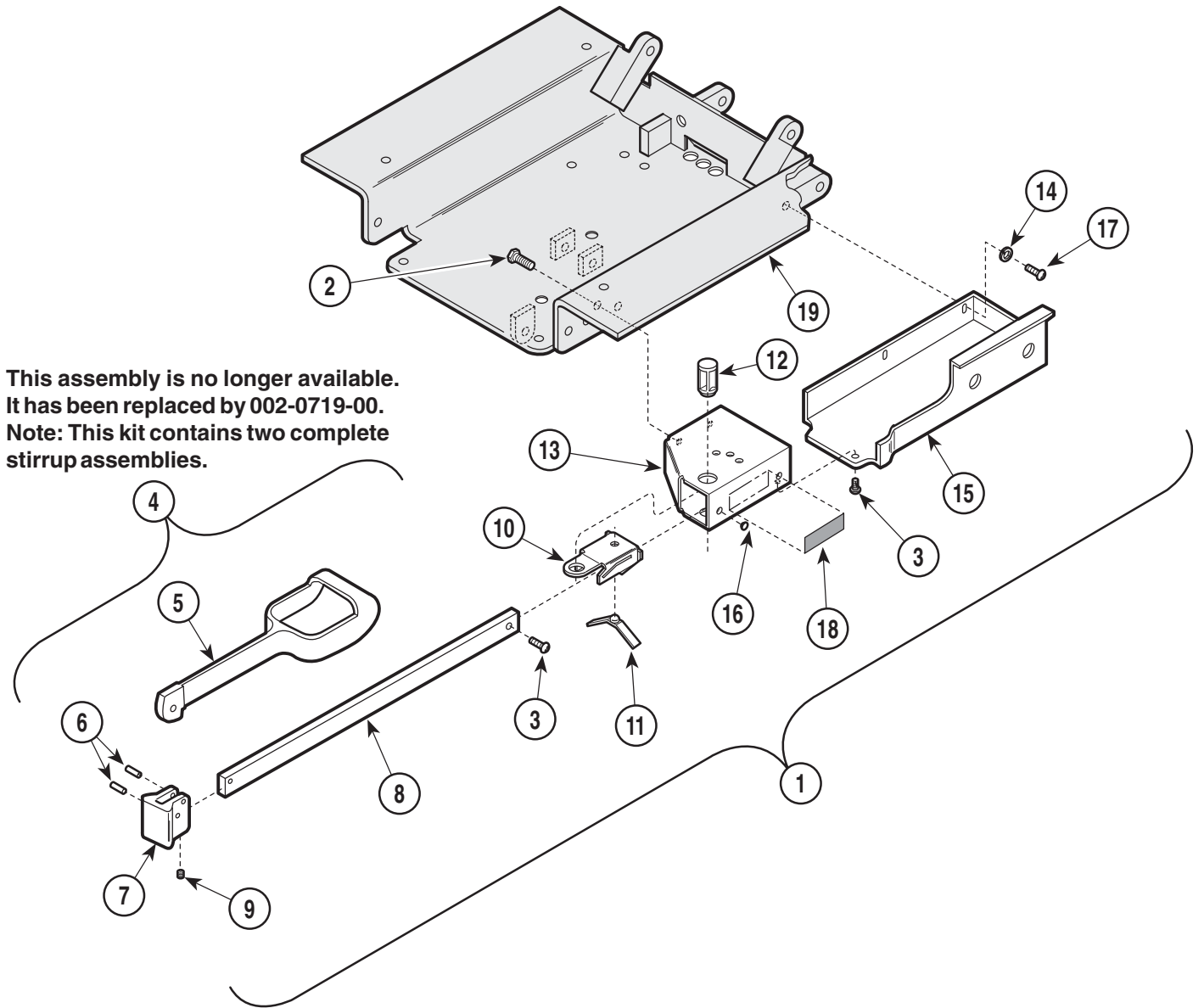
Used on units with Serial Number AY1006 thru AY2969

Item	Part No.	Description	Qty.	Item	Part No.	Description	Qty.
1	029-0669-00	Stirrup and Bracket Assy. - R.H. (Includes Items 2 thru 24 [Not Shown])	1	12	• 030-0511-00	• Stirrup Mount - R.H. (Not Shown)	1
	029-0669-01	Stirrup and Bracket Assy. - L.H. (Includes Items 2 thru 24 [Shown])	1	13	• 030-0511-01	• Stirrup Mount - L.H. (Shown)	1
2	• 029-0115-00	• (No Longer Available) - R.H. (Includes Items 3 thru 9 [Shown])	1	14	• 042-0014-00	• Shoulder Screw	1
	• 029-0115-01	• (No Longer Available) - L.H. (Includes Items 3 thru 9 [Not Shown])	1	15	• 040-0312-03	• Screw	2
3	• 020-0012-00	• Pivot Block	1	16	• 053-0286-00	• Gear Lock Pad	1
4	• 040-0250-15	• Set Screw	1	17	• 050-1417-00	• Gear Lock	1
5	• 042-0001-00	• Roll Pin	2	18	• 057-0049-00	• Stirrup Stop	1
6	• 042-0001-02	• Roll Pin	2	19	• 040-0010-34	• Screw	2
7	• 051-0005-00	• Horizontal Bar	1	20	• 030-0512-00	• Guide Weldment - R.H. (Not Shown)	1
8	• 020-0001-01	• Stirrup	1	21	• 030-0512-01	• Guide Weldment - L.H. (Shown)	1
9	• 051-0113-00	• Steel Pivot Block	1	22	• 053-0050-02	• Plug	2
10	• 040-0010-14	• Set Screw	2	23	• 040-0250-10	• Screw	2
11	• 025-0013-00	• Wave Spring Washer	3	24	• 045-0001-23	• Lockwasher	2
				25	• 040-0375-20	• Screw	3
					• 045-0001-24	• Lockwasher	3
						Seat Weldment (Refer to "Seat Components" Elsewhere)	Ref

Always Specify Model & Serial Number

Stirrup Assembly

SECTION VI PARTS LIST



MA258302

Used on units with Serial Number AY2970 thru AY3704

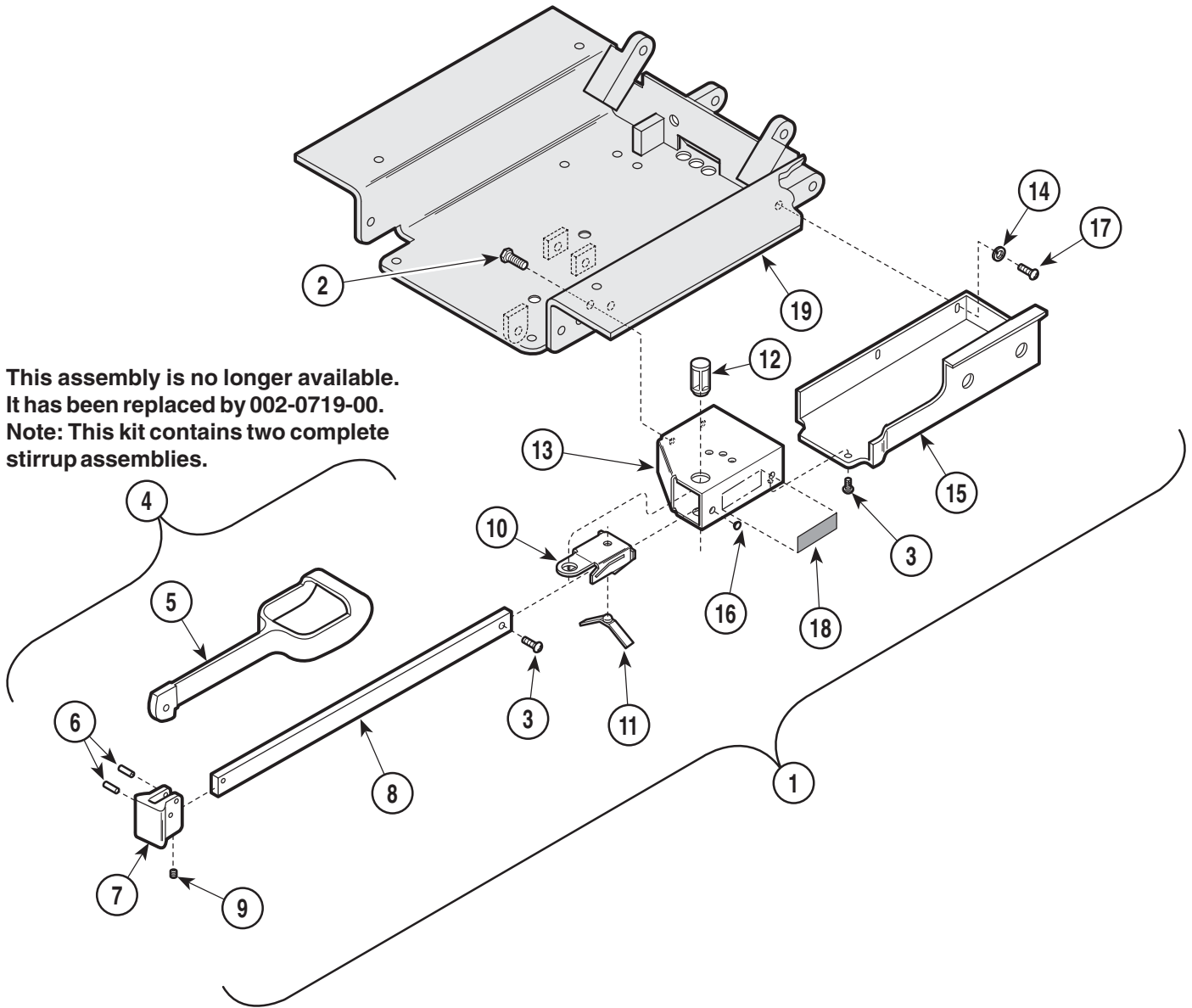
Item	Part No.	Description	Qty.	Item	Part No.	Description	Qty.
1	029-1281-00	Stirrup and Bracket Assy. - R.H. (Includes Items 2 thru 17 [Not Shown])	1	11	• 016-0400-00	• Spring	1
	029-1281-01	Stirrup and Bracket Assy. - L.H. (Includes Items 2 thru 17 [Shown])	1	12	• 053-0387-00	• Pivot Boss	1
2	• 040-0375-00	• Screw	2	13	• 030-0725-00	• Stirrup Mount - R.H. (Not Shown)	1
3	• 040-0010-34	• Screw	2		• 030-0726-00	• Stirrup Mount - L.H. (Shown)	1
4	• 029-1277-00	Stirrup Assembly (Incl. Items 5 thru 9)	2	14	• 045-0001-23	• Washer	2
5	•• 020-0181-00	•• Stirrup	1	15	• 053-0381-00	• Stirrup Housing R.H. (Not Shown)	1
6	•• 042-0001-00	•• Roll Pin	2		• 053-0381-01	• Stirrup Housing L.H. (Shown)	1
7	•• 020-0182-00	•• Pivot Block	1	16	• 053-0050-05	• Plug	2
8	•• 051-0634-00	•• Horizontal Bar	1	17	• 040-0250-48	• Screw	2
9	•• 040-0250-15	•• Set Screw	1	18	061-0296-00	Stirrup Instruction Label	2
10	• 050-1785-00	• Bracket	1	19		Seat Weldment (Refer to "Seat Components" Elsewhere)	Ref

Always Specify Model & Serial Number

Stirrup Assembly

SECTION VI PARTS LIST

This assembly is no longer available.
It has been replaced by 002-0719-00.
Note: This kit contains two complete
stirrup assemblies.



MA258302

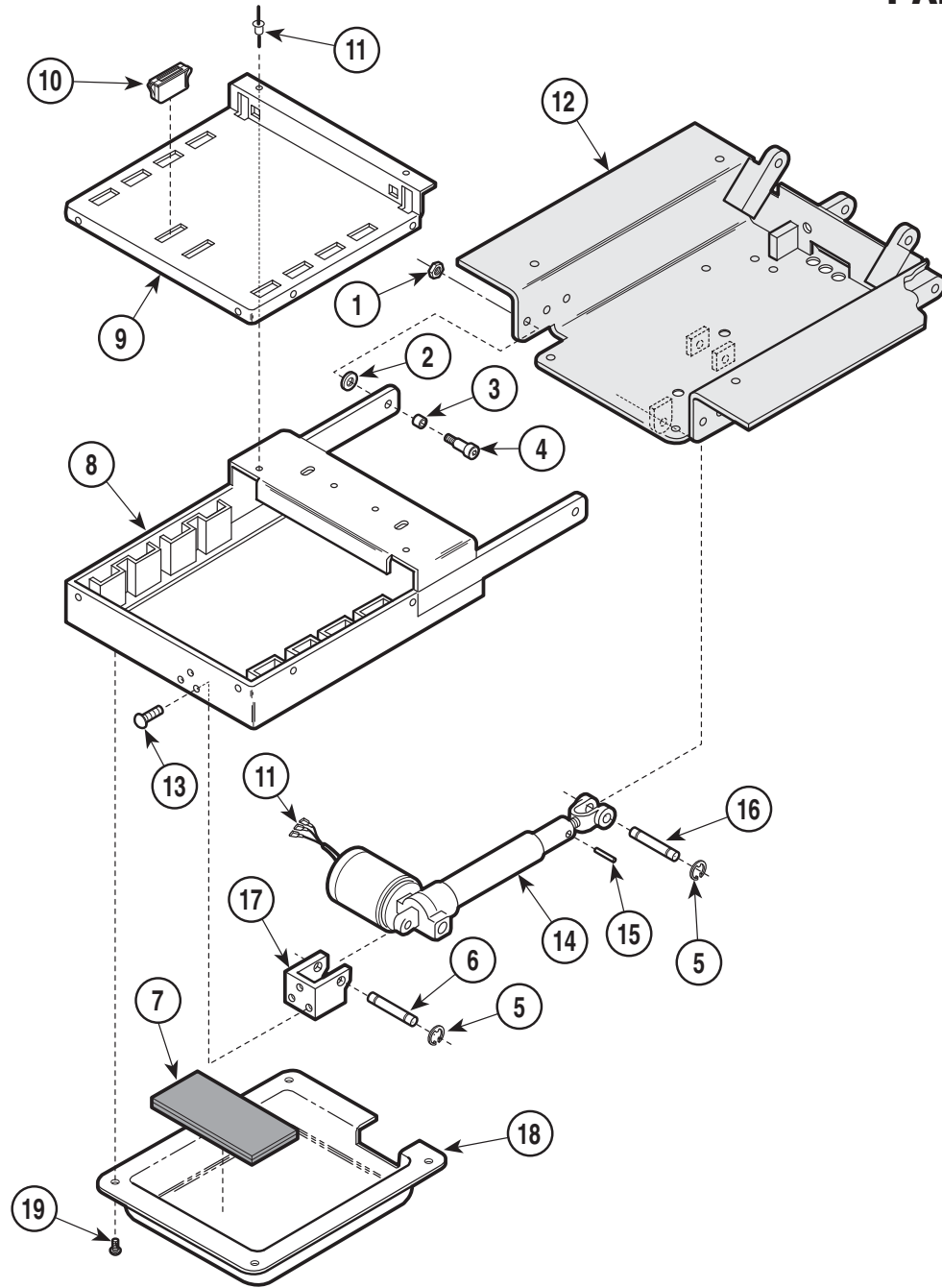
Used on units with Serial Number AY3705 thru Present

Item	Part No.	Description	Qty.	Item	Part No.	Description	Qty.
1	029-1460-00	Stirrup and Bracket Assy. - R.H. (Includes Items 2 thru 17 [Not Shown])	1	11	• 016-0400-00	• Spring	1
	029-1460-01	Stirrup and Bracket Assy. - L.H. (Includes Items 2 thru 17 [Shown])	1	12	• 053-0387-00	• Pivot Boss	1
2	• 040-0375-00	• Screw	2	13	• 030-0725-00	• Stirrup Mount - R.H. (Not Shown)	1
3	• 040-0010-47	• Screw	2		• 030-0726-00	• Stirrup Mount - L.H. (Shown)	1
4	• 029-1397-00	Stirrup Assembly (Incl. Items 5 thru 9)	2	14	• 045-0001-23	• Washer	2
5	•• 020-0181-00	•• Stirrup	1	15	• 053-0381-00	• Stirrup Housing R.H. (Not Shown)	1
6	•• 042-0001-00	•• Roll Pin	2		• 053-0381-01	• Stirrup Housing L.H. (Shown)	1
7	•• 020-0182-00	•• Pivot Block	1	16	• 053-0050-05	• Plug	2
8	•• 051-0668-00	•• Horizontal Bar	1	17	• 040-0250-48	• Screw	2
9	•• 040-0250-15	•• Set Screw	1	18	061-0296-00	Stirrup Instruction Label	2
10	• 050-1785-02	• Bracket	1	19		Seat Weldment (Refer to "Seat Components" Elsewhere)	Ref

Always Specify Model & Serial Number

Foot Extension Components

SECTION VI PARTS LIST



MA296000

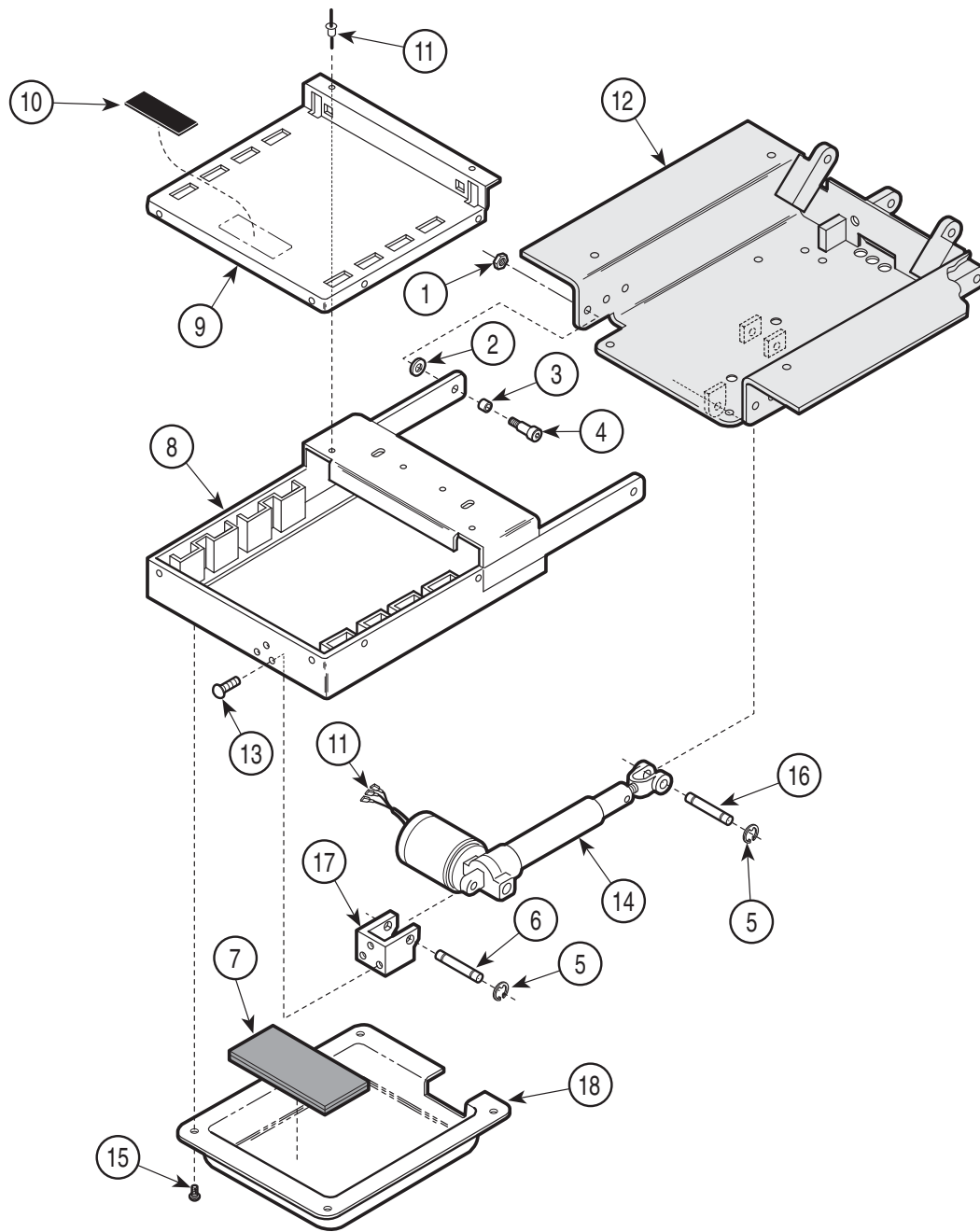
Used on units with Serial Number AY1000 thru AY3805

Item	Part No.	Description	Qty.	Item	Part No.	Description	Qty.
1	041-0375-05	Nut	2	12		Seat Weldment (Refer to "Seat Components" Elsewhere)	Ref
2	045-0004-00	Washer	2	13	040-0250-42	Screw	3
3	016-0076-00	Bushing	2	14		Foot Actuator (Refer to "Back and Foot Actuator Assembly" Elsewhere)	Ref
4	042-0014-00	Shoulder Screw	2	15	042-0001-07	Roll Pin	1
5	042-0007-02	E-Ring	4	16	042-0048-01	Clevis Pin	1
6	042-0048-02	Clevis Pin	1	17	N.L.A.	Actuator Hitch	1
7	054-0085-05	Sound Damp	1	18	053-0241-00	Plastic Foot Cover	1
8	030-0447-01	Foot Extension	1	19	040-0010-47	Screw	4
9	050-1236-00	Front Trim	1				
10	016-0092-00	Magnet	2				
11	042-0010-04	Pop Rivet	8				

N.L.A. Denotes "No Longer Available"
Always Specify Model & Serial Number

Foot Extension Components

SECTION VI PARTS LIST



MA296001

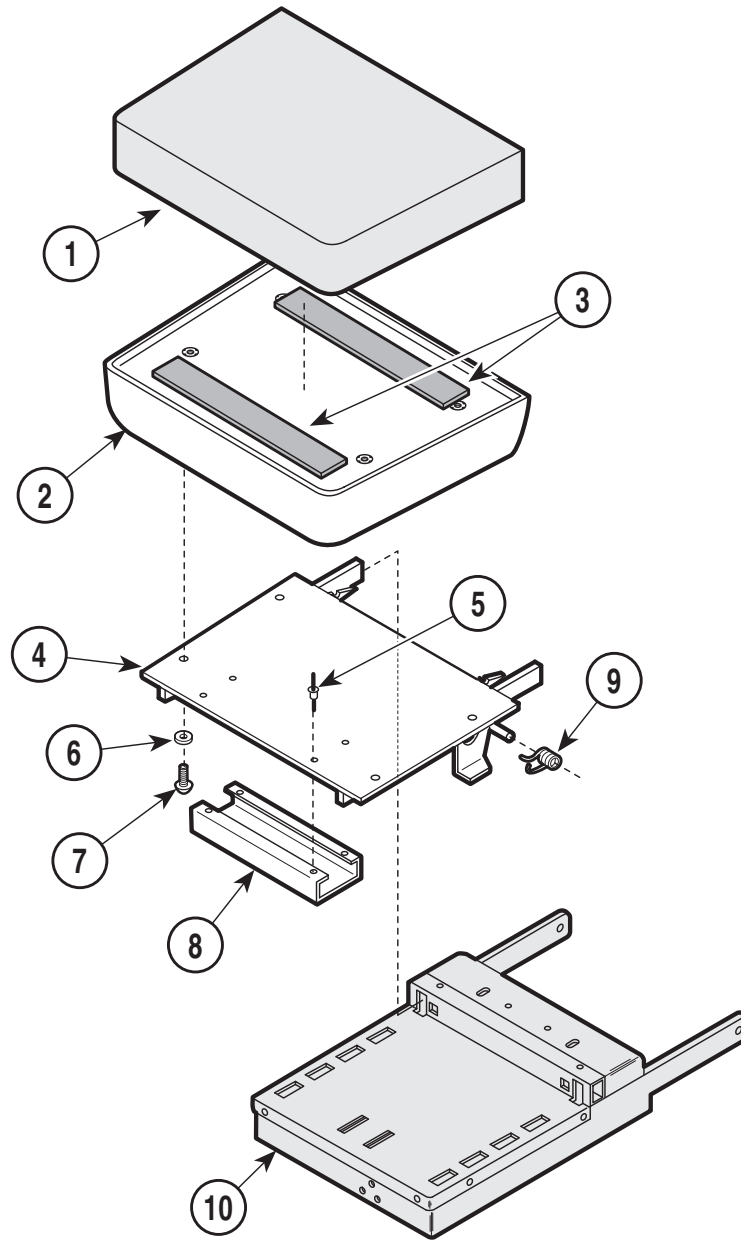
Used on units with Serial Number AY3806 thru Present

Item	Part No.	Description	Qty.	Item	Part No.	Description	Qty.
1	041-0375-05	Nut	2	12		Seat Weldment (Refer to "Seat Components" Elsewhere)	Ref
2	045-0004-00	Washer	2	13	040-0250-42	Screw	3
3	016-0076-00	Bushing	2	14	002-0590-00	Foot Actuator	1
4	042-0014-00	Shoulder Screw	2	15	040-0010-47	Screw	4
5	042-0007-02	E-Ring	4	16	042-0048-01	Clevis Pin	1
6	042-0048-02	Clevis Pin	1	17	N.L.A.	Actuator Hitch	1
7	054-0085-05	Sound Damp	1	18	053-0241-00	Plastic Foot Cover	1
8	030-0447-01	Foot Extension	1				
9	050-4128-00	Front Trim	1				
10	016-0604-01	Magnet	2				
11	042-0010-04	Pop Rivet	8				

N.L.A. Denotes "No Longer Available"
Always Specify Model & Serial Number

Footboard Components

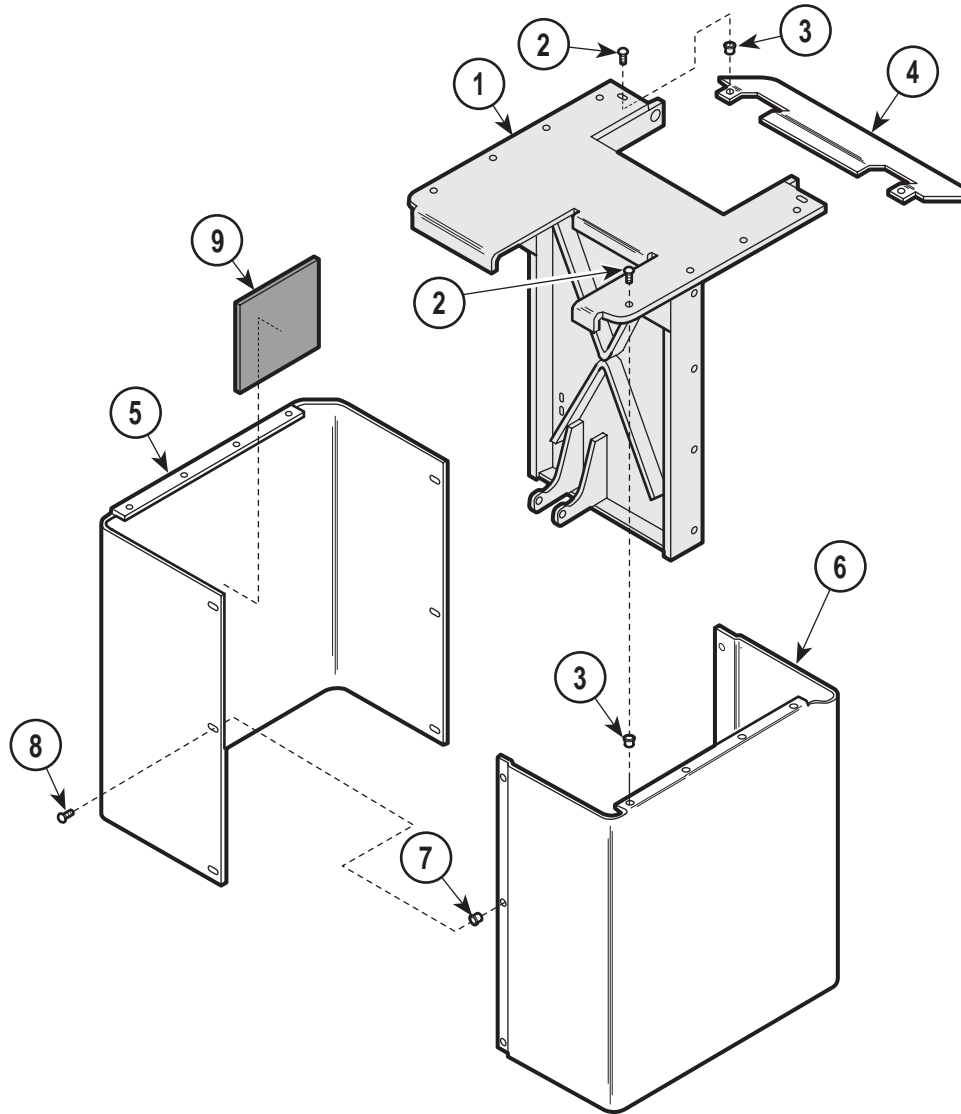
SECTION VI PARTS LIST



MA258601

Item	Part No.	Description	Qty.	Item	Part No.	Description	Qty.
1		Upholstered Footboard (Refer to "Upholstered Components" Elsewhere)	Ref	7	040-0250-44	Screw	4
2	029-0585-00	Footboard Assembly	1	8	050-0868-00	Catch Channel	1
3	053-0131-02	Velcro	2	9	025-0014-00	Torsion Spring (Shown)	1
4	030-0836-10	(No Longer Available)	1		025-0014-01	Torsion Spring	1
5	042-0010-04	Pop Rivet	4	10		Foot Extension (Refer to "Foot Extension Components" Elsewhere)	Ref
6	045-0001-03	Lockwasher	4				

Always Specify Model & Serial Number

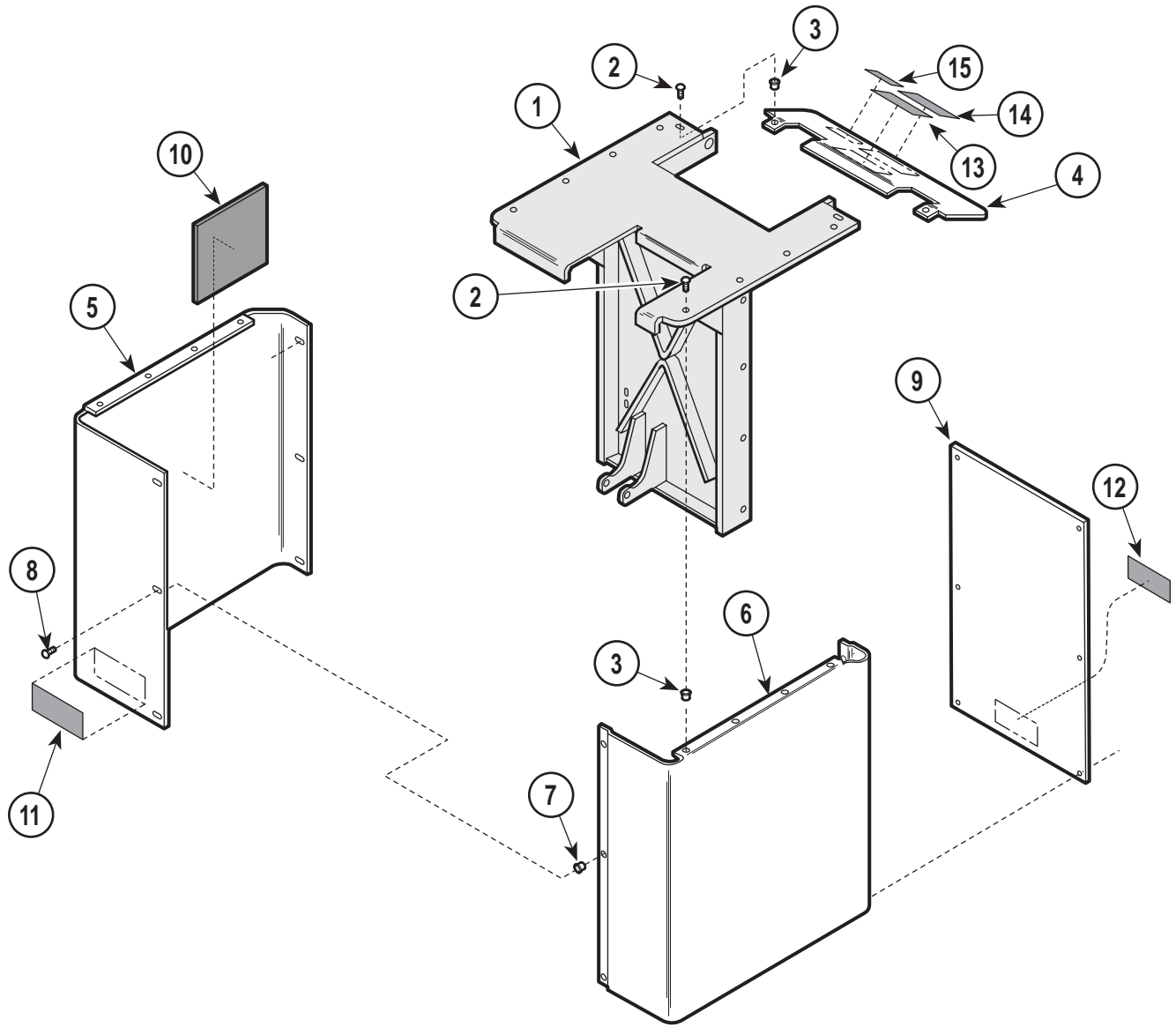


MA296100

Used on units with Serial Number AY-1000 thru AY-1005

Item	Part No.	Description	Qty.	Item	Part No.	Description	Qty.
1		Inner Member Wldnt. (Refer to "Middle Member Components" Elsewhere) ... Ref		5	050-1695-11	Shroud R.H.	1
2	040-0010-01	Screw	6	6	050-1696-11	Shroud L.H.	1
3	042-0045-01	Nutsert.....	6	7	042-0045-02	Nutsert.....	6
4	050-1697-10	Sprocket Shroud	1	8	040-0008-29	Screw	6
				9	054-0067-00	Sound Damp	2

Always Specify Model & Serial Number



MA296200

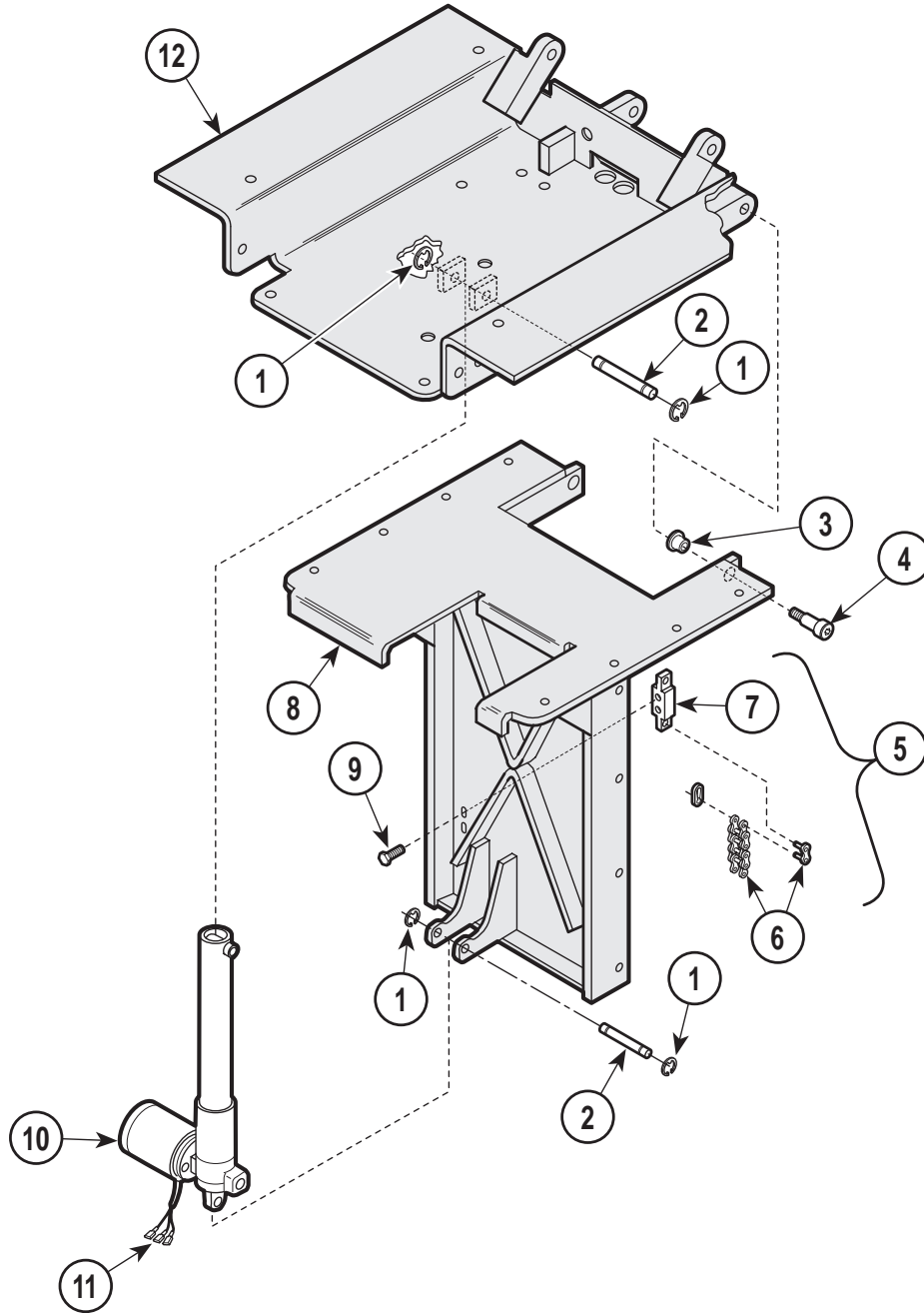
Used on units with Serial Number AY-1006 thru Present

Item	Part No.	Description	Qty.	Item	Part No.	Description	Qty.
1		Inner Member Wldt. (Refer to "Middle Member Components" Elsewhere) ... Ref		8	040-0008-29	Screw	9
2	040-0010-01	Screw	6	9	050-1698-10	Cover	1
3	042-0045-01	Nutsert.....	6	10	054-0067-00	Sound Damp	2
4	050-1697-10	Sprocket Shroud	1	11	061-0293-00	Caution Label	1
5	029-1302-00	Shroud R.H. (75th Anniversary)	1	12	061-0033-00	Caution Label	1
6	029-1303-00	Shroud L.H. (75th Anniversary)	1	13		Serial Number Label	1
7	042-0045-02	Nutsert.....	9	14	061-0301-00	U/L Listing Label	1
				15	061-0291-00	Patent Label	1

Always Specify Model & Serial Number

Inner Member Components

SECTION VI PARTS LIST



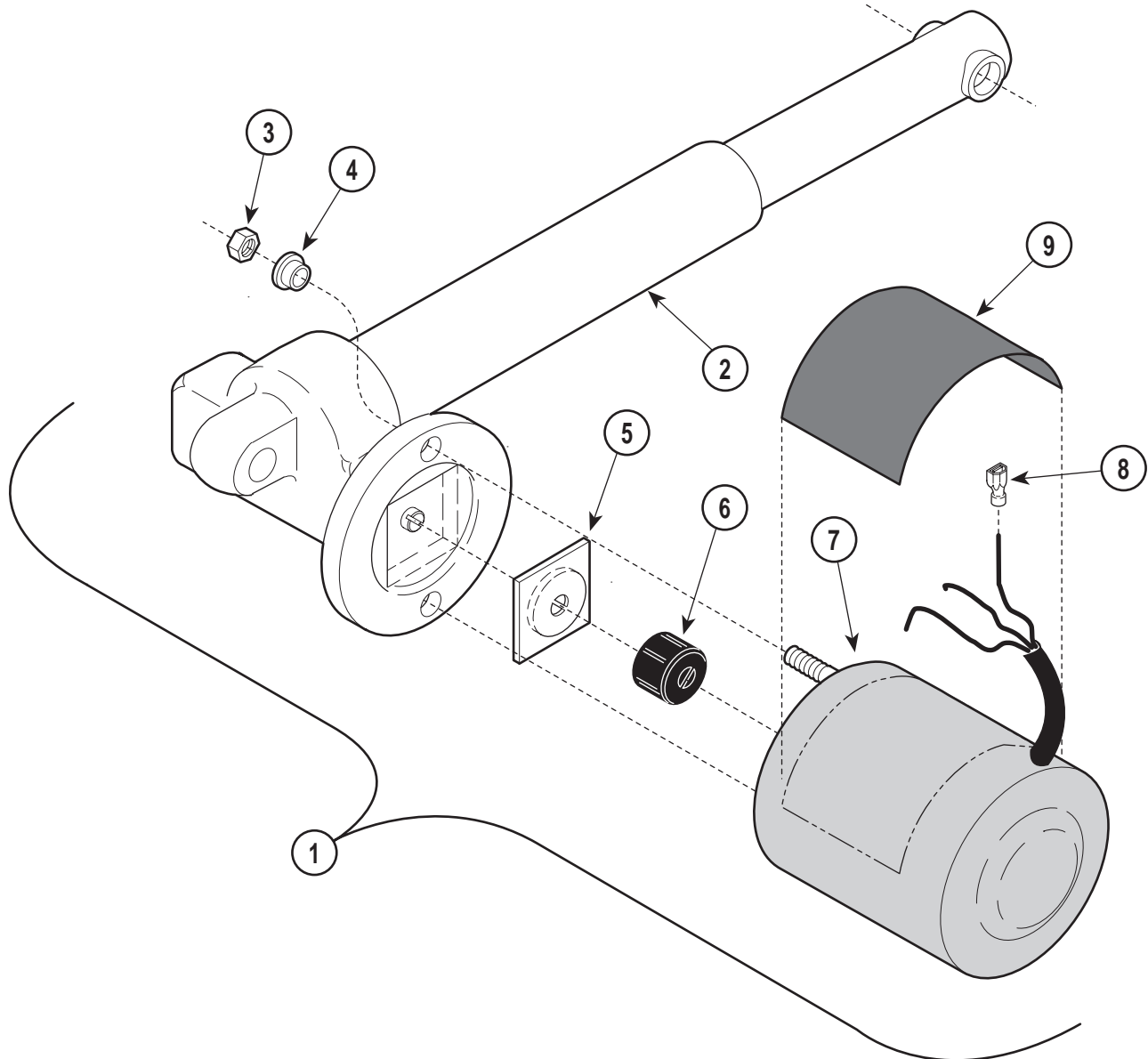
MA296300

Item	Part No.	Description	Qty.	Item	Part No.	Description	Qty.
1	042-0007-02	E-Ring	4	9	040-0375-00	Bolt	4
2	042-0048-02	Clevis Pin	2	10		Tilt Actuator (Refer to "Base and Tilt Actuator Assembly" Elsewhere)	Ref
3	016-0131-04	Flange Bearing	2	11	015-0312-00	Terminal	3
4	042-0014-05	Shoulder Bolt	2	12		Seat Weldment (Refer to "Seat Components" Elsewhere)	Ref
5	029-0070-00	Chain Assembly (Includes Items 6 & 7)	2				
6	• 016-0047-00	• Chain (Includes Connecting Links)	2				
7	• 051-0027-00	• Adjustment Block 5/8	1				
	• 051-0027-01	• Adjustment Block 7/8	1				
8		Inner Member Wldnt. (Refer to "Middle Member Components" Elsewhere) ...	Ref				

Always Specify Model & Serial Number

Base and Tilt Actuator Assembly

SECTION VI PARTS LIST



MA294900

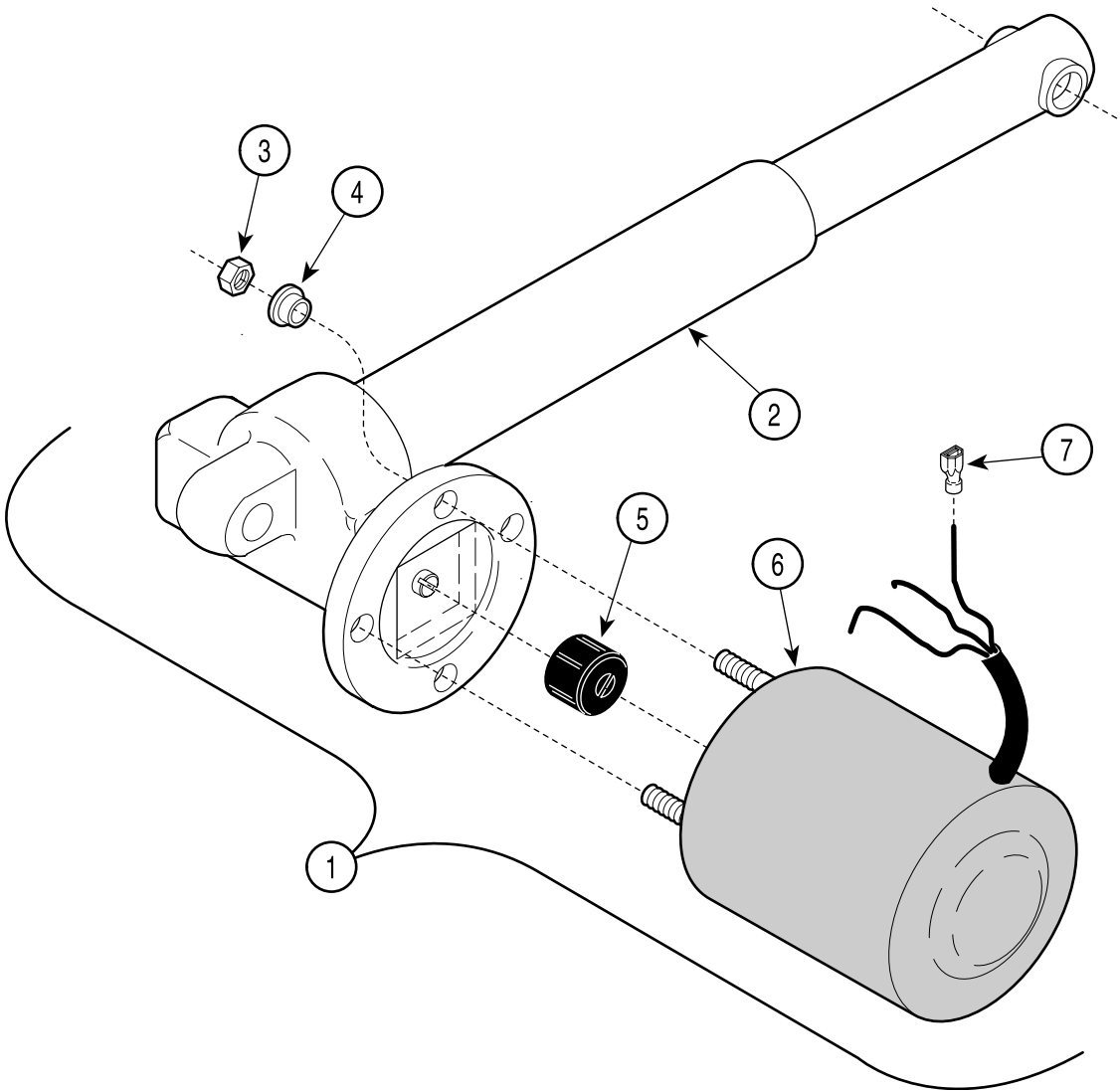
Used on units with Serial Number AY-1000 thru AY-3805

Item	Part No.	Description	Qty.	Item	Part No.	Description	Qty.
1	002-0214-00	Actuator Assembly (Includes Items 2 thru 8)	1	5	• 016-0237-00	• Actuator Brake	1
2	• 016-0231-05	• Actuator (Less Motor)	1	6	• 016-0509-00	• Motor Coupler	1
3	•	• Nut	2	7	• 002-0574-00	• Motor (Less Terminals)	1
4	• 053-0198-00	• Shoulder Washer	2	8	• 015-0312-00	• Terminal	3
				9	061-0135-00	Caution Label	1

Always Specify Model & Serial Number

Base and Tilt Actuator Assembly

SECTION VI PARTS LIST



MA294901

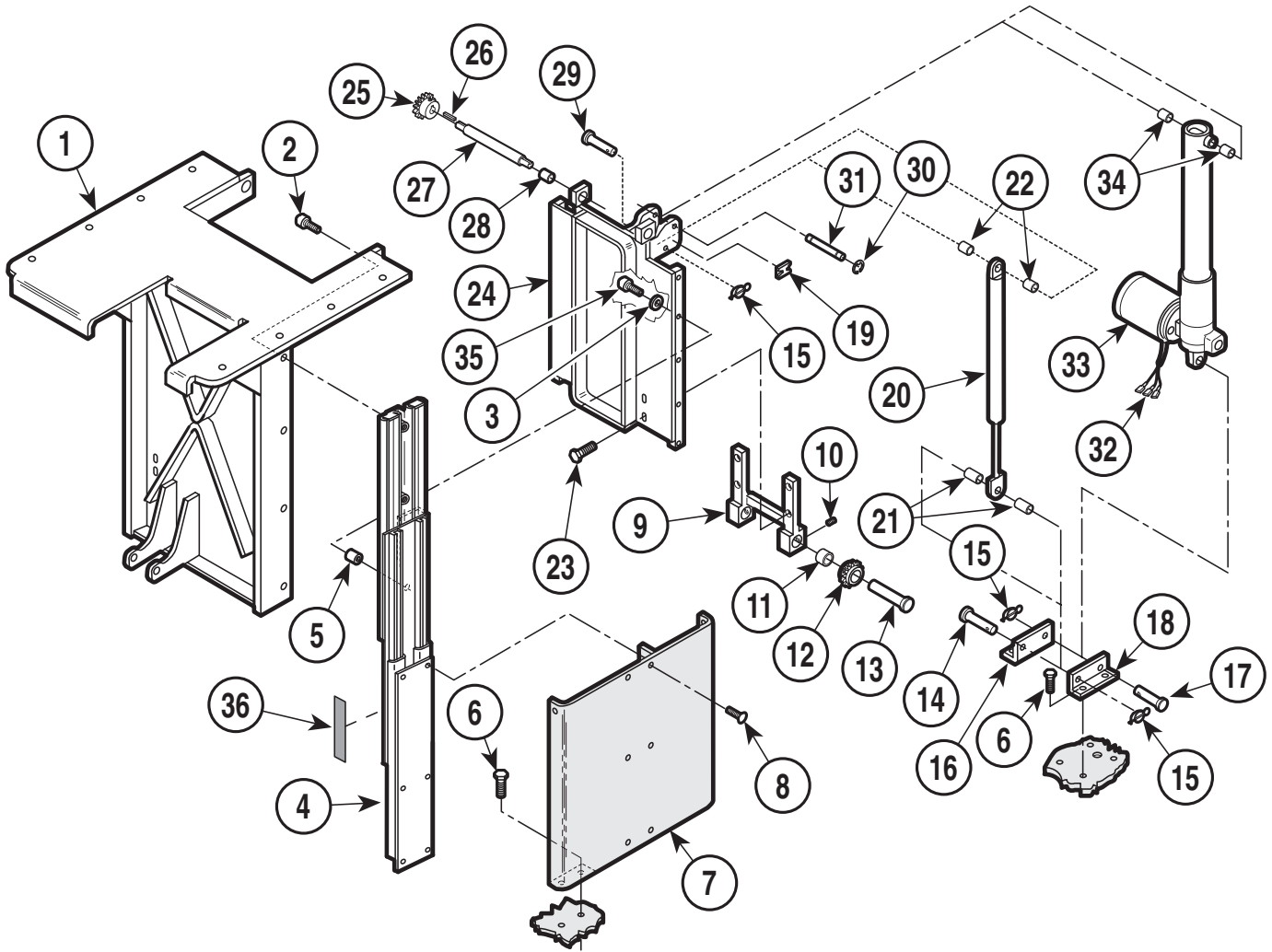
Used on units with Serial Number AY-3806 thru Present

Item	Part No.	Description	Qty.	Item	Part No.	Description	Qty.
1	029-0562-00	Actuator Assembly (Includes Items 2 thru 7)	1	4	• 053-0198-00	• Shoulder Washer	4
2	•	• Actuator (Less Motor)	1	5	• 016-0662-00	• Motor Coupler	1
3	•	• Nut	4	6	• 015-1085-00	• Motor (Less Terminals)	1
				7	• 015-0315-02	• Terminal	3

Always Specify Model & Serial Number

Middle Member Components

SECTION VI PARTS LIST



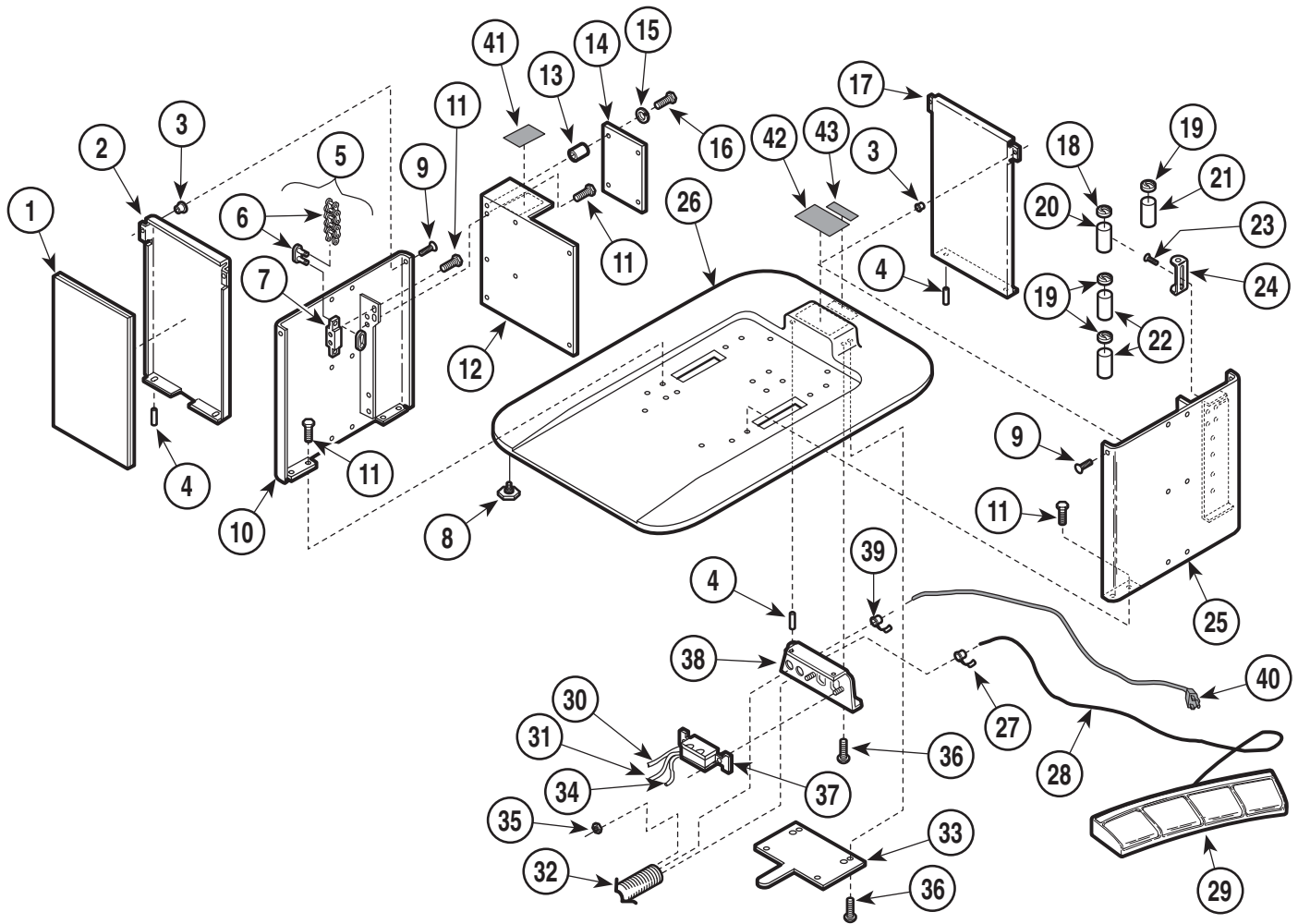
MA296400

Item	Part No.	Description	Qty.	Item	Part No.	Description	Qty.
1	030-0614-01	Inner Member Weldment	1	19	015-0220-00	Cable Mounting	1
2	040-0250-88	Bolt	8	20	002-0213-00	Gas Cylinder Kit	1
3	045-0001-10	Lockwasher	10	21	016-0148-08	Spacer	2
4	016-0234-01	Base Side L.H. (Shown)	1	22	016-0148-07	Spacer	2
	016-0234-00	Base Side R.H.	1	23	040-0375-00	Bolt	4
5	052-0015-00	Spacer	10	24	029-0476-00	Middle Member Assy. (Includes Middle Member Widnt. and Items 24 thru 28)	1
6	040-0375-50	Bolt	12		• 030-0388-00	• Middle Member Weldment	1
7		Support Channel Widnt. (Refer to "Base Components" Elsewhere)	Ref	25	• 016-0151-00	• Sprocket	2
8	040-0250-35	Bolt	12	26	• 042-0008-00	• Key	2
9	029-0478-00	Idler Adjuster Assembly (Includes Idler Adjuster and Items 10 thru 13)	1	27	• 057-0163-00	• Axle	1
	• 030-0386-00	• Idler Adjuster	1	28	• 016-0149-00	• Bearing	2
10	• 040-0250-04	• Set Screw	2	29	042-0602-03	Clevis Pin	1
11	• 016-0149-00	• Bearing	2	30	042-0007-02	E-Ring	2
12	• 016-0152-00	• Sprocket	2	31	042-0048-03	Clevis Pin	1
13	• 030-0274-00	• Journal Weldment	2	32	015-0312-00	Terminal	3
14	042-0005-03	Clevis Pin	1	33		Base Actuator (Refer to "Base and Tilt Actuator Assembly" Elsewhere)	Ref
15	042-0004-00	Hitch Pin Clip	3	34	016-0148-07	Spacer	2
16	059-0029-00	Actuator R.H. Hitch	1	35	040-0008-30	Screw	10
17	042-0602-02	Clevis Pin	1	36	061-0045-00	Caution Label	2
18	059-0029-01	Actuator L.H. Hitch	1				

Always Specify Model & Serial Number

Base Components

SECTION VI PARTS LIST



MA296600

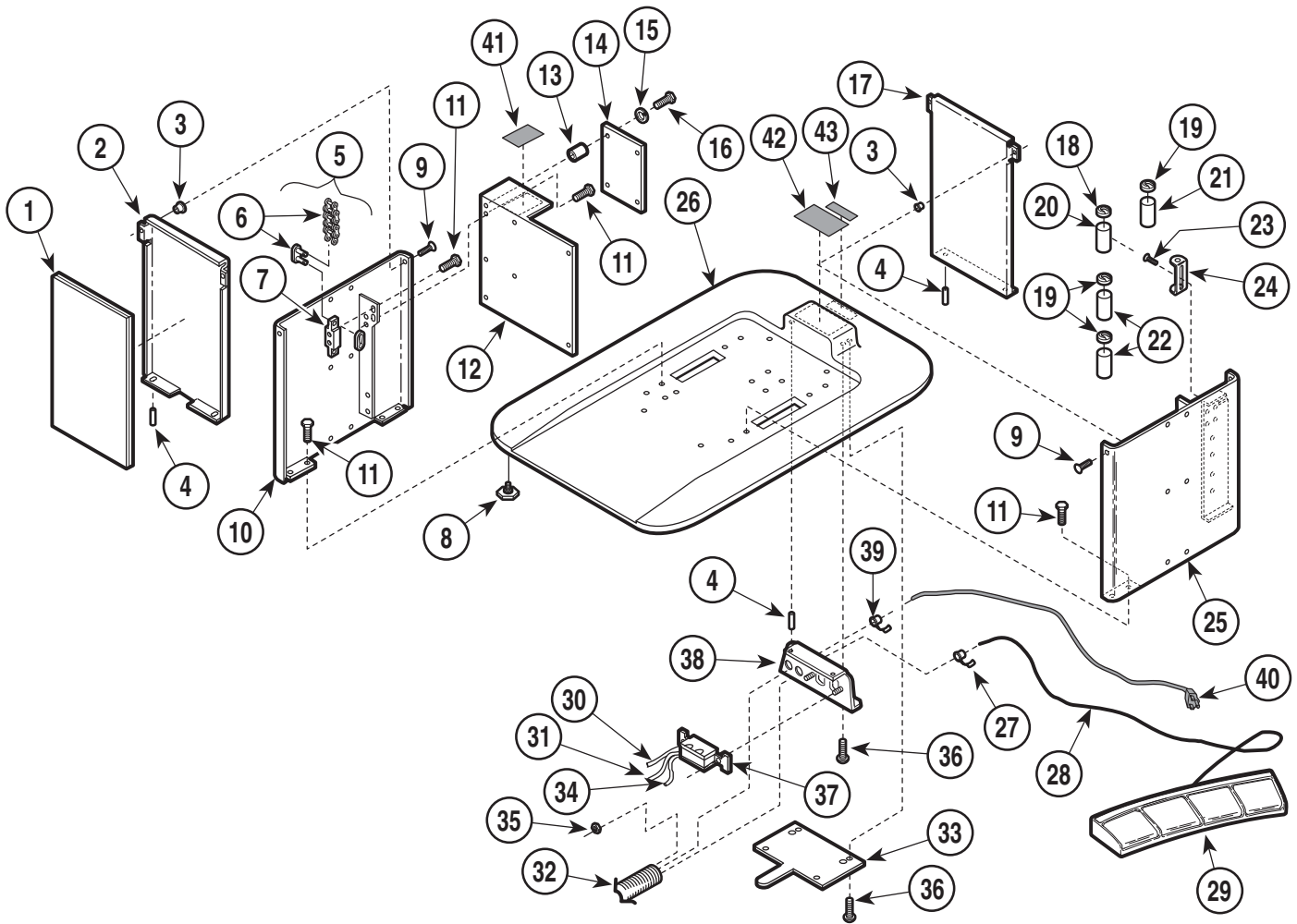
Used on units with Serial Number AY-1000 thru AY-1005

Item	Part No.	Description	Qty.	Item	Part No.	Description	Qty.
1	054-0074-00	Sound Damp	1	22	015-0437-00	Capacitor (Base & Tilt)	2
2	050-1105-00	Back Lower Shroud	1	23	040-0010-62	Screw	8
3	042-0045-03	Nutsert	4	24	015-0412-00	Mounting Bracket	4
4	042-0009-01	Groove Pin	6	25	030-0387-01	L.H.Support Channel	1
5	029-0070-00	Chain Assembly (Includes Items 6 & 7) .	2	26	020-0045-00	Base Casting	1
6	• 016-0047-00	• Chain (Includes Connecting Links)	2	27	015-0002-05	Strain Relief	1
7	• 051-0027-00	• Adjustment Block 5/8	1	28	015-0480-00	Footswitch Cord	1
	• 051-0027-01	• Adjustment Block 7/8	1	29		Footswitch Assembly (Refer to "Foot Control" Elsewhere)	1
8	016-0001-01	Leveling Screw	4	30	015-0100-02	Jumper Wire (Black)	1
9	040-0250-54	Screw	4	31	015-0101-03	Jumper Wire (Grn, Yel)	1
10	030-0387-00	R.H. Support Channel	1	32	015-0466-01	Heat Shrink Tubing	1
11	040-0375-50	Bolt	16	33	050-1132-00	Wire Cover	1
12	050-1118-00	Brace	1	34	015-0100-03	Jumper Wire (White)	1
13	016-0148-06	Spacer	4	35	041-0008-00	Nut	2
14	015-0490-00	Interface Board	1	36	040-0008-04	Screw	6
	• 015-0346-02	Fuse (.15 amp.)	1	37	015-0083-01	Receptacle	1
	• 015-0346-03	Fuse (5 amp.)	4	38	030-0741-01	Power Inlet Weldment	1
15	045-0001-08	Lockwasher	8	39	015-0002-01	Strain Relief	1
16	040-0010-43	Screw	4	40	015-0066-07	Power Cord	1
17	050-1105-01	Front Lower Shroud	1	41	061-0195-00	Fuse Label	1
18	015-0413-00	Capacitor Cap (Foot)	1	42	061-0174-00	Receptacle Label	1
19	015-0413-01	Capacitor Cap (Base, Back, & Tilt)	3	43	061-0295-00	Cord Tag	1
20	015-0437-04	Capacitor (Foot)	1				
21	015-0437-03	Capacitor (Back)	1				

Always Specify Model & Serial Number

Base Components

SECTION VI PARTS LIST



MA296600

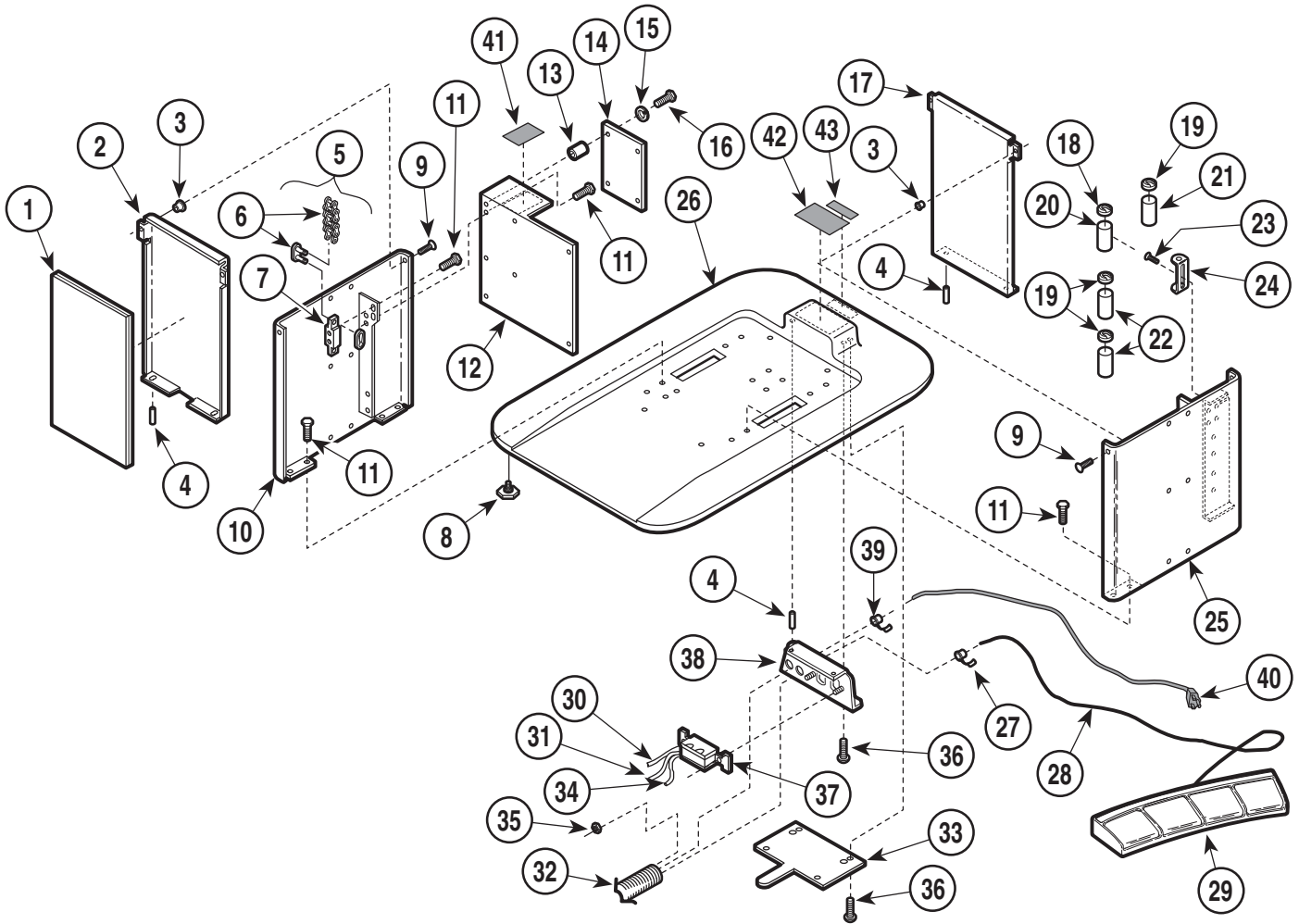
Used on units with Serial Number AY-1005 thru AY-3704

Item	Part No.	Description	Qty.	Item	Part No.	Description	Qty.
1	054-0074-00	Sound Damp	1	22	015-0437-00	Capacitor (Base & Tilt)	2
2	050-1105-00	Back Lower Shroud	1	23	040-0010-62	Screw	8
3	042-0045-03	Nutsert	4	24	015-0412-00	Mounting Bracket	4
4	042-0009-01	Groove Pin	6	25	030-0387-01	L.H.Support Channel	1
5	029-0070-00	Chain Assembly (Includes Items 6 & 7) .	2	26	020-0045-00	Base Casting	1
6	• 016-0047-00	• Chain (Includes Connecting Links)	2	27	015-0002-05	Strain Relief	1
7	• 051-0027-00	• Adjustment Block 5/8	1	28	015-0480-00	Footswitch Cord	1
	• 051-0027-01	• Adjustment Block 7/8	1	29		Footswitch Assembly (Refer to "Foot Control" Elsewhere)	1
8	016-0001-01	Leveling Screw	4	30	015-0100-02	Jumper Wire (Black)	1
9	040-0250-54	Screw	4	31	015-0101-03	Jumper Wire (Grn, Yel)	1
10	030-0387-00	R.H. Support Channel	1	32	015-0466-01	Heat Shrink Tubing	1
11	040-0375-50	Bolt	16	33	050-1132-00	Wire Cover	1
12	050-1559-00	Brace	1	34	015-0100-03	Jumper Wire (White)	1
13	015-0599-00	Hex Standoff	4	35	041-0008-00	Nut	2
14	015-0490-00	Interface Board	1	36	040-0008-04	Screw	6
	• 015-0346-02	Fuse (.15 amp.)	1	37	015-0083-01	Receptacle	1
	• 015-0346-03	Fuse (5 amp.)	4	38	030-0741-01	Power Inlet Weldment	1
15	045-0001-08	Lockwasher	8	39	015-0002-01	Strain Relief	1
16	040-0010-34	Screw	4	40	015-0066-07	Power Cord	1
17	050-1105-01	Front Lower Shroud	1	41	061-0195-00	Fuse Label	1
18	015-0413-00	Capacitor Cap (Foot)	1	42	061-0174-00	Receptacle Label	1
19	015-0413-01	Capacitor Cap (Base, Back, & Tilt)	3	43	061-0295-00	Cord Tag	1
20	015-0437-04	Capacitor (Foot)	1				
21	015-0437-03	Capacitor (Back)	1				

Always Specify Model & Serial Number

Base Components

SECTION VI PARTS LIST



MA296600

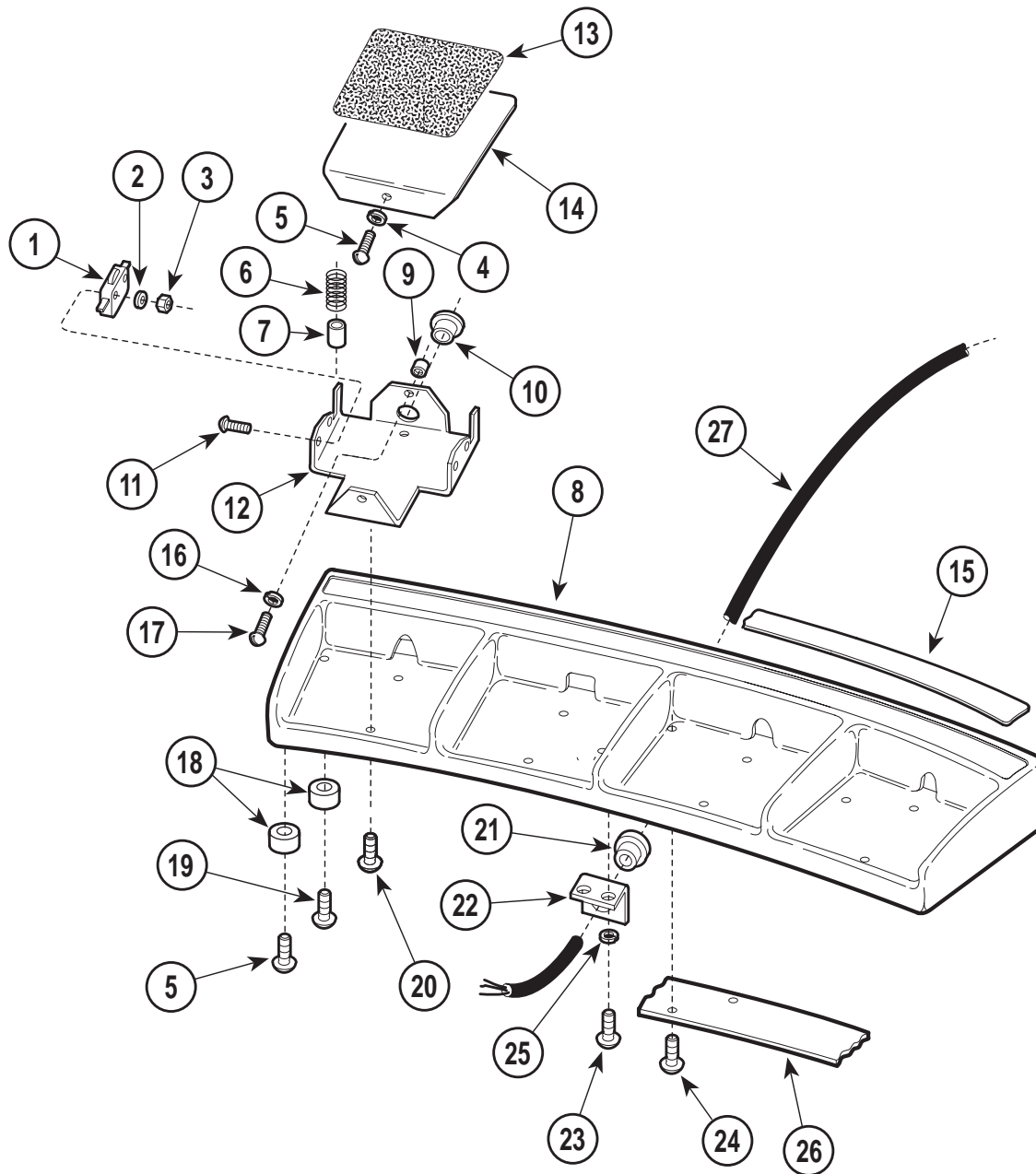
Used on units with Serial Number AY-3705 thru Present

Item	Part No.	Description	Qty.	Item	Part No.	Description	Qty.
1	054-0074-00	Sound Damp	1	22	015-0437-00	Capacitor (Base & Tilt)	2
2	050-1105-02	Back Lower Shroud	1	23	040-0010-62	Screw	8
3	042-0045-03	Nutsert	4	24	015-0412-00	Mounting Bracket	4
4	042-0009-01	Groove Pin	6	25	030-0387-04	L.H.Support Channel	1
5	029-0070-00	Chain Assembly (Includes Items 6 & 7) .	2	26	020-0045-02	Base Casting	1
6	• 016-0047-00	• Chain (Includes Connecting Links)	2	27	015-0002-05	Strain Relief	1
7	• 051-0027-00	• Adjustment Block 5/8	1	28	015-0480-00	Footswitch Cord	1
	• 051-0027-01	• Adjustment Block 7/8	1	29		Footswitch Assembly (Refer to "Foot Control" Elsewhere)	1
8	016-0001-01	Leveling Screw	4	30	015-0100-02	Jumper Wire (Black)	1
9	040-0250-54	Screw	4	31	015-0101-03	Jumper Wire (Grn, Yel)	1
10	030-0387-03	R.H. Support Channel	1	32	015-0466-01	Heat Shrink Tubing	1
11	040-0375-50	Bolt	16	33	050-1132-00	Wire Cover	1
12	050-1559-00	Brace	1	34	015-0100-03	Jumper Wire (White)	1
13	015-0599-00	Hex Standoff	4	35	041-0008-00	Nut	2
14	015-0490-00	Interface Board	1	36	040-0008-04	Screw	6
	• 015-0346-02	Fuse (.15 amp.)	1	37	015-0083-01	Receptacle	1
	• 015-0346-03	Fuse (5 amp.)	4	38	030-0741-01	Power Inlet Weldment	1
15	045-0001-08	Lockwasher	8	39	015-0002-01	Strain Relief	1
16	040-0010-34	Screw	4	40	015-0066-07	Power Cord	1
17	050-1105-03	Front Lower Shroud	1	41	061-0195-00	Fuse Label	1
18	015-0413-00	Capacitor Cap (Foot)	1	42	061-0174-00	Receptacle Label	1
19	015-0413-01	Capacitor Cap (Base, Back, & Tilt)	3	43	061-0295-00	Cord Tag	1
20	015-0437-04	Capacitor (Foot)	1				
21	015-0437-03	Capacitor (Back)	1				

Always Specify Model & Serial Number

Footswitch Components

SECTION VI PARTS LIST



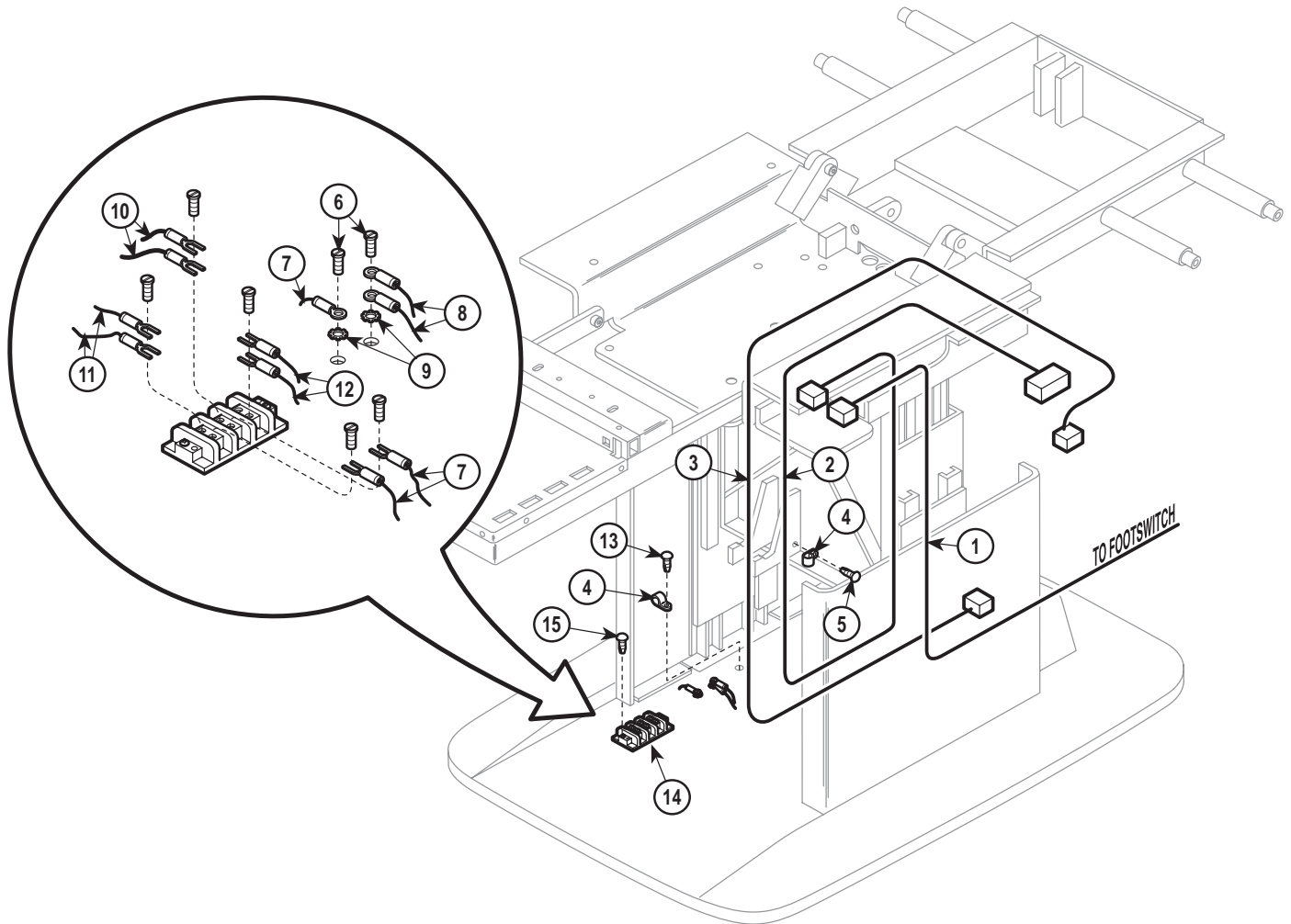
MA295600

Item	Part No.	Description	Qty.	Item	Part No.	Description	Qty.
	029-0567-01	Footswitch Assembly (Includes Items 1 thru 20)	1	14	•050-0941-04	• Pedal	4
1	•015-0479-00	• Switch	8	15	•061-0427-00	• Decal	1
2	•045-0001-07	• Washer	16	16	•045-0001-08	• Washer	4
3	•041-0003-00	• Nut	16	17	•040-0010-36	• Screw	4
4	•052-0076-00	• Spacer	4	18	•053-0156-00	• Glide	6
5	•040-0010-04	• Screw	6	19	•040-0010-35	• Screw	4
6	•025-0009-00	• Spring	8	20	•040-0010-52	• Screw	8
7	•052-0010-00	• Spacer	8	21	015-0002-05	Strain Relief Bushing	1
8	•020-0144-00	• Foot Control Casting	1	22	050-1227-00	Strain Relief Bracket	1
9	•052-0075-00	• Spacer	4	23	040-0010-04	Screw	2
10	•053-0155-00	• Split Bushing (Earlier Units Only)	4	24	040-0010-47	Screw	3
11	•040-0003-00	• Screw	16	25	045-0001-08	Lockwasher	2
12	•050-3258-00	• Step Mount	4	26	050-0942-00	Wire Channel Cover	1
13	•053-0154-00	• Foot Tread	4	27	015-0480-00	Footswitch Cable (Refer to "Footswitch Electrical Connections" Elsewhere)	Ref

Always Specify Model & Serial Number

Footswitch Electrical Connections

SECTION VI PARTS LIST



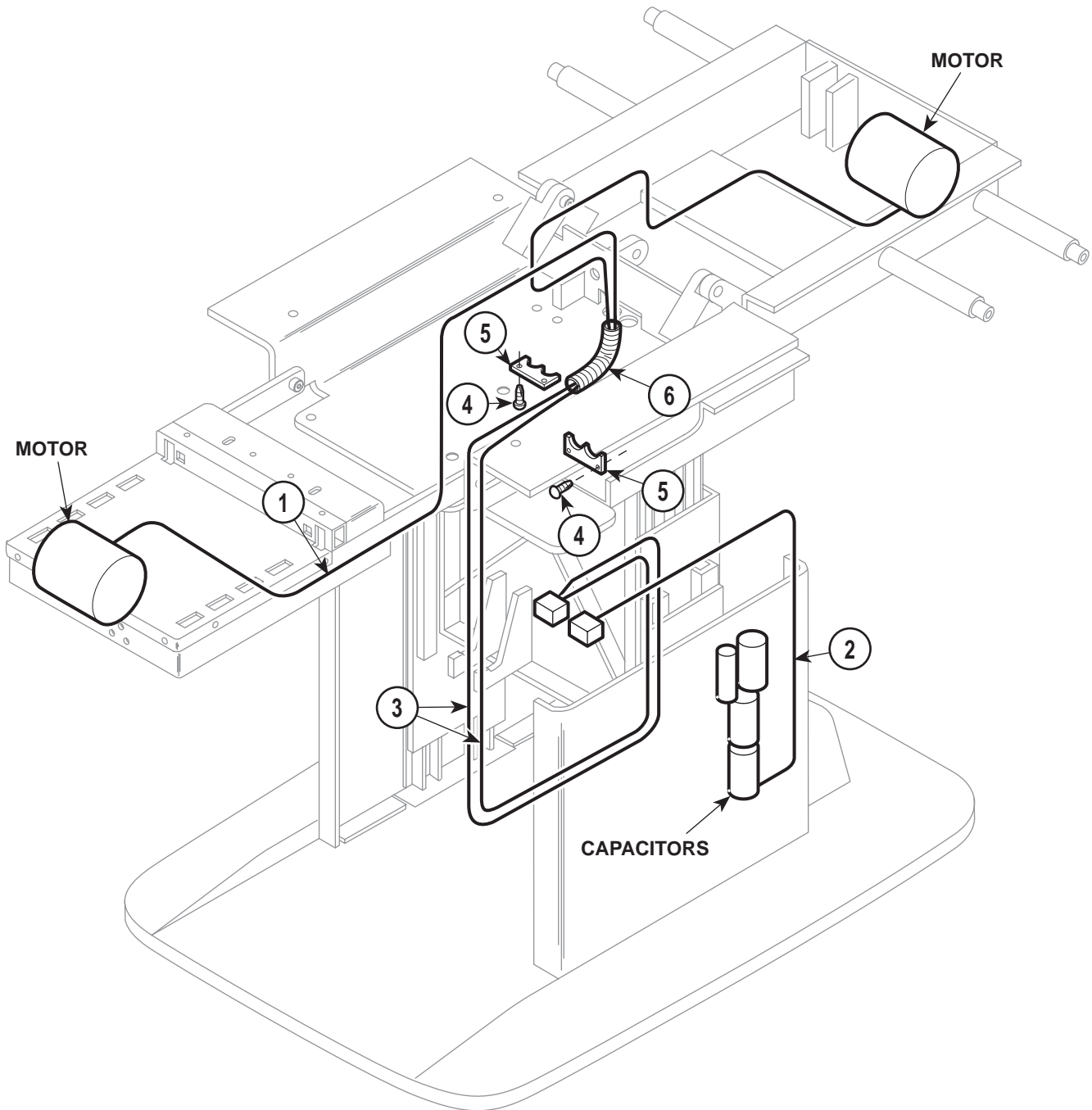
MA259000

Item	Part No.	Description	Qty.	Item	Part No.	Description	Qty.
1	015-0480-00	Footswitch Cable	Ref	11		Jumper Wire (Refer to "Wiring Diagram" Elsewhere [Section 5])	Ref
2	015-0474-00	Wiring Harness	1	12		Wire Harness (Refer to "Wiring Diagram" Elsewhere [Section 5])	Ref
3	015-0535-02	Cord Set	Ref	13	040-0010-04	Screw	1
4	015-0014-01	Wire Clamp	2	14	015-0009-05	Terminal Block	1
5	040-0010-00	Screw	1	15	040-0006-33	Screw	2
6	040-0010-47	Screw	2	16	015-0013-00	Cable Tie - 7 1/4" Lg. (Not Shown) ...	AR
7	015-0066-07	Power Cord	1	17	015-0013-01	Cable Tie - 14 1/2" Lg. (Not Shown) .	AR
8		Jumper Wire (Refer to "Wiring Diagram" Elsewhere [Section 5])	Ref	18	015-0013-02	Cable Tie - 3 7/8" Lg. (Not Shown) ...	AR
9	045-0001-31	Lockwasher	2				
10		Jumper Wire (Refer to "Wiring Diagram" Elsewhere [Section 5])	Ref				

Always Specify Model & Serial Number

Motor and Capacitor Electrical Connections

SECTION VI PARTS LIST



MA296500

Item	Part No.	Description	Qty.	Item	Part No.	Description	Qty.
1	015-0257-02	Flex Guard	2	6	015-0597-01	Flex Guard	1
2	015-0441-00	Capacitors Wire Harness	1	7	015-0013-00	Cable Tie 7.25" (Not Shown)	10
3	015-0981-00	Motor Wire Harness	1	8	015-0013-01	Cable Tie 14.5" (Not Shown)	10
4	040-0010-47	Screw	4	9	015-0013-02	Cable Tie 3.875" (Not Shown)	10
5	050-1564-00	Tubing Clip	2				

Always Specify Model & Serial Number

COMMENTS

The Technical Publications Department of Midmark Corporation takes pride in its publications. We are sure that our manuals will fill all of your needs when you are performing scheduled maintenance, servicing, or repairs on a Midmark product.

However, if you find any errors or feel that there should be a change, addition, or deletion to a manual, please let us know!

Page(s) and Paragraph(s) Needing Changed:

Description of Error or Desired Change:

Please fax or mail a copy of this completed comment sheet to:

Midmark Corporation
ATTN: Technical Publications Department
60 Vista Drive
Versailles, Ohio 45380
Fax: (937) 526-5542

FAX ORDERING FORM

(SERVICE PARTS ONLY)

NOTES:

- ALL **BLOCKED** AREAS MUST BE COMPLETED.
- USE FOR NON-WARRANTY FAX ORDERS ONLY. WARRANTY ORDERS MUST BE TELEPHONED IN (1-800-MIDMARK).

ATTENTION: SERVICE DEPARTMENT FAX#: 877-249-1793				
ACCT #: _____		P.O. #: _____		DATE: _____
NAME: _____		SHIP TO: _____		
ADDRESS: _____		_____		
CITY, ST.: _____		_____		
CONTACT: _____		_____		
PHONE: _____		_____		
<input type="checkbox"/> NON-EMERGENCY ORDER - TO SHIP WITHIN 72 HOURS IF PART(S) IN STOCK.		METHOD OF SHIPMENT <u>OTHER</u> _____		
<input type="checkbox"/> EMERGENCY ORDER - TO SHIP WITHIN 24 HOURS IF PART(S) IN STOCK (IF ORDER IS RECEIVED BEFORE 1:00 P.M. E.S.T).		UPS FED EX		
SEND NOTIFICATION IF PARTS ARE NOT AVAILABLE TO SHIP WITHIN 24 HOURS VIA E-MAIL OR FAX TO: _____		<input type="checkbox"/> NEXT DAY A.M. <input type="checkbox"/> NEXT DAY A.M.		
		<input type="checkbox"/> NEXT DAY P.M. <input type="checkbox"/> NEXT DAY P.M.		
		<input type="checkbox"/> 2ND DAY <input type="checkbox"/> 2ND DAY		
		<input type="checkbox"/> GROUND <input type="checkbox"/> ECONOMY		
QTY.	PART #	DESCRIPTION (SPECIFY COLOR OF ITEM IF APPLICABLE)	COLOR CODE	PRICE/PER
			TOTAL COST: \$	

Midmark Corporation
60 Vista Drive
P.O. Box 286
Versailles, Ohio 45380-0286
937-526-3662
Fax 937-526-5542
midmark.com



Because we care.

Subject to change without notice.
Refer to www.Documark.com for latest revision.