

**109** -000  
thru  
-005

**Ritter®**  
by MIDMARK

Pediatric  
Examination  
Table

Serial Number Prefix:  
AH & CV

Service and  
Parts Manual

**NO LONGER IN  
PRODUCTION**  
Some service parts may not  
be available for this product!



FOR USE BY MIDMARK  
TRAINED TECHNICIANS ONLY

**109** -000  
thru  
-005



# TABLE OF CONTENTS

Section/Paragraph	Page	Section/Paragraph	Page
<b>IMPORTANT INSTRUCTIONS</b>			
General Safety Instructions .....	ii	4.3 Zero Balance Adjustment .....	4-2
Safety Alert Symbols .....	ii	4.4 Scale Calibration .....	4-2
Warranty Instructions .....	ii	4.5 Platform Components Access .....	4-3
		4.6 Linear Scale Alignment .....	4-5
<b>SECTION I GENERAL INFORMATION</b>		<b>SECTION V SCHEMATICS AND DIAGRAMS</b>	
1.1 Scope of Manual .....	1-1	None.	
1.2 How to Use Manual .....	1-1	<b>SECTION VI PARTS LIST</b>	
1.3 Description of 109 Pediatric Examination Table .....	1-1	6.1 Introduction .....	6-1
1.4 Specifications .....	1-1	6.2 Description of Columns .....	6-1
1.5 Parts Replacement Ordering .....	1-3	6.3 Torque Specifications And Important Assembly Notes .....	6-1
1.6 Special Tools .....	1-3	Pictorial Index .....	6-2.*
<b>SECTION II TESTING AND TROUBLESHOOTING</b>		Left Hand Cabinet Assembly .....	6-3.*
2.1 Operational Test .....	2-1	Right Hand Cabinet Assembly .....	6-4.*
2.2 Troubleshooting Procedures .....	2-1	Upper Wrap Assembly (No Scale) .....	6-5.*
<b>SECTION III SCHEDULED MAINTENANCE</b>		Upper Wrap Assembly (Mechanical Scale) .....	6-6.*
3.1 Scheduled Maintenance .....	3-1	Table Top Assembly (No Scale) .....	6-7.*
<b>SECTION IV MAINTENANCE/SERVICE INSTRUCTIONS</b>		Table Top Assembly (Mechanical Scale) .....	6-8.*
4.1 Introduction .....	4-1	<b>COMMENTS</b> .....	7-1
4.2 Beam Scale Components Removal / Installation .....	4-1	<b>FAX ORDERING FORM</b> .....	7-2

(\*) Indicates that there has been a serial number break for the illustration and that there are additional point page(s) following the original page.

# IMPORTANT INSTRUCTIONS

## General Safety Instructions

**Safety First: The primary concern of Midmark Corporation is that this table is maintained with the safety of the patient and staff in mind. To assure that services and repairs are completed safely and correctly, proceed as follows:**

- (1) Read this entire manual before performing any services or repairs on this table.
- (2) Be sure you understand the instructions contained in this manual before attempting to service or repair this table.

## Safety Alert Symbols

Throughout this manual are safety alert symbols that call attention to particular procedures. These items are used as follows:



### DANGER

A **DANGER** is used for an imminently hazardous operating procedure, practice, or condition which, if not correctly followed, will result in loss of life or serious personal injury.



### WARNING

A **WARNING** is used for a potentially hazardous operating procedure, practice, or condition which, if not correctly followed, could result in loss of life or serious personal injury.



### CAUTION

A **CAUTION** is used for a potentially hazardous operating procedure, practice, or condition which, if not correctly followed, could result in minor or moderate injury. It may also be used to alert against unsafe practices.



### EQUIPMENT ALERT

An **EQUIPMENT ALERT** is used for an imminently or potentially hazardous operating procedure, practice, or condition which, if not correctly followed, will or could result in serious, moderate, or minor damage to unit.

### NOTE

A **NOTE** is used to amplify an operating procedure, practice or condition.

## Warranty Instructions

Refer to the Midmark "Limited Warranty" printed in the Installation and Operation Manual for warranty information. Failure to follow the guidelines listed below will void the warranty and/or render the 109 Pediatric Examination Table unsafe for operation.

- In the event of a malfunction, do not attempt to operate the table until necessary repairs have been made.
- Do not attempt to disassemble table, replace malfunctioning or damaged components, or perform adjustments unless you are one of Midmark's authorized service technicians.
- Do not substitute parts of another manufacturer when replacing inoperative or damaged components. Use only Midmark replacement parts.

## SECTION I GENERAL INFORMATION

### 1.1 Scope of Manual

This manual contains detailed troubleshooting, scheduled maintenance, maintenance, and service instructions for the 109 Pediatric Examination Table. This manual is intended to be used by Midmark's authorized service technicians.

### 1.2 How to Use Manual

- A. Manual Use When Performing Scheduled Maintenance.
- (1) Perform inspections and services listed in Scheduled Maintenance Chart (Refer to para 3.1).
  - (2) If a component is discovered to be faulty or out of adjustment, replace or adjust component in accordance with maintenance/service instructions (Refer to para 4.1).
- B. Manual Use When Table Is Malfunctioning And Cause Is Unknown.
- (1) Perform an operational test on table (Refer to para 2.1).
  - (2) Perform troubleshooting procedures listed in Troubleshooting Guide (Refer to para 2.2).
  - (3) If a component is discovered to be faulty or out of adjustment, replace or adjust component in accordance with maintenance/service instructions (Refer to para 4.1).
- C. Manual Use When Damaged Component Is Known.
- (1) Replace or adjust component in accordance with maintenance/service instructions (Refer to para 4.1).

### 1.3 Description Of 109 Pediatric Examination Table

A. General Description (See Figure 1-1).

The 109 Pediatric Examination Table is an examination table designed specifically for performing general medical examinations and procedures on small children as well as weighing the body weight and measuring the body length of a child.

The major serviceable components of the table are the beam scale components which include the "0" balance screw & weight and the scale calibration arm, platform components, linear scale, and table top locking mechanism.

### 1.4 Specifications

Factual data for the 109 Pediatric Examination Table is provided in Table 1-1.

**Table 1-1. Specifications**

Description	Data
Weight:	
Without Shipping Carton (w/scale) ...	201 lb (91.2 kg)
With Shipping Carton (w/ scale) ....	246 lb (111.6 kg)
Shipping Carton .....	49 in. "L" x 32 in. "W" x 48 in. "H" (124.5 cm x 81.3 cm x 121.9 cm)
Dimensions:	
Table Top Length .....	45 in. (114.3 cm)
Overall Length .....	45 in. (114.3 cm)
Table Top Width .....	20.75 in. (52.7 cm)
Overall Width .....	20.75 in. (52.7 cm)
Work Height .....	38.25 in. (97.2 cm)
Weight Capacity (Scale Maximum) .....	130 lb. (59 kg)

**SECTION I  
GENERAL INFORMATION**

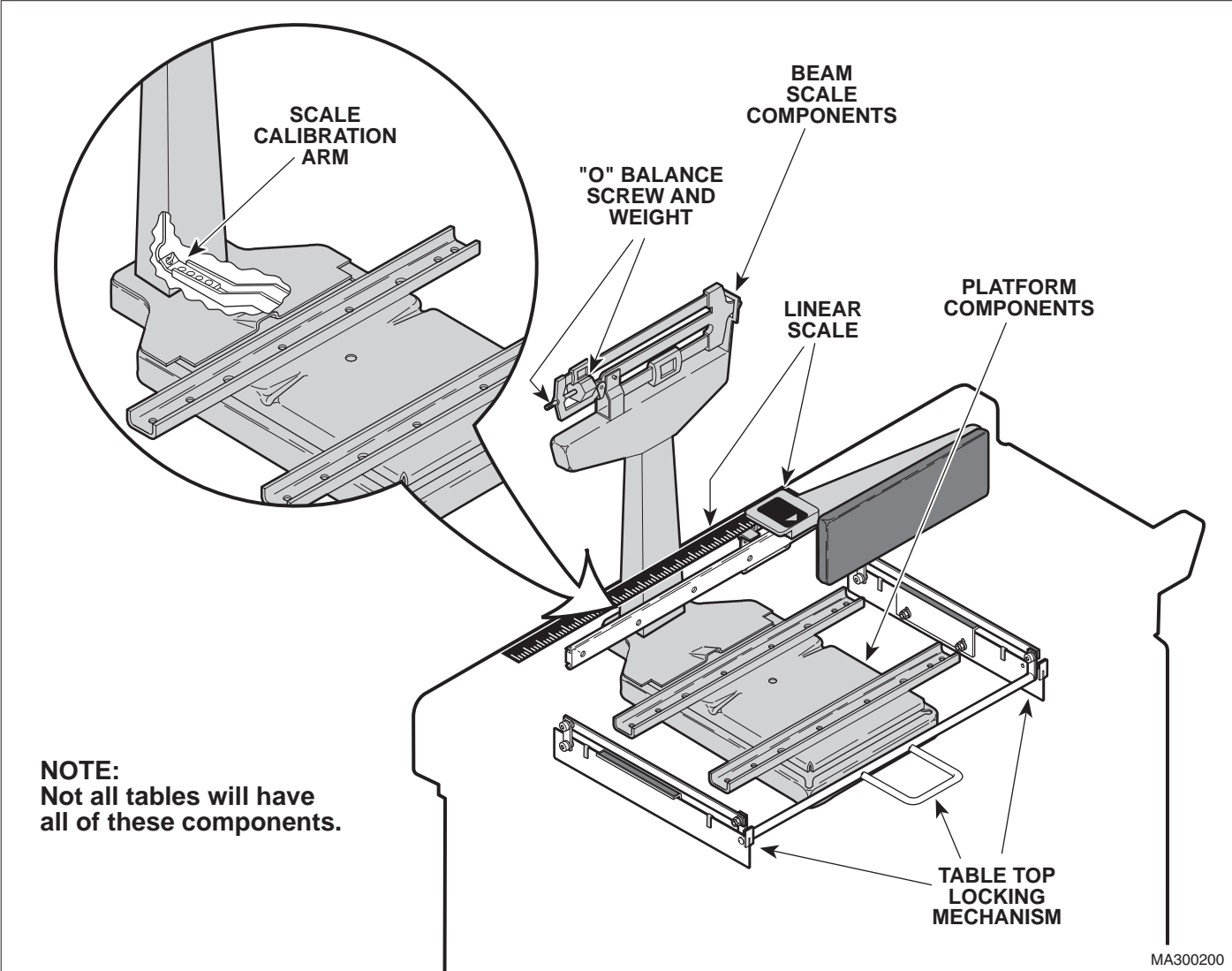


Figure 1-1. Major Components

# SECTION I GENERAL INFORMATION

## 1.5 Parts Replacement Ordering

If a part replacement is required, order the part directly from the factory as follows:

- (1) Refer to Figure 1-2 to determine the location of the model number and serial number of the table and record this data.

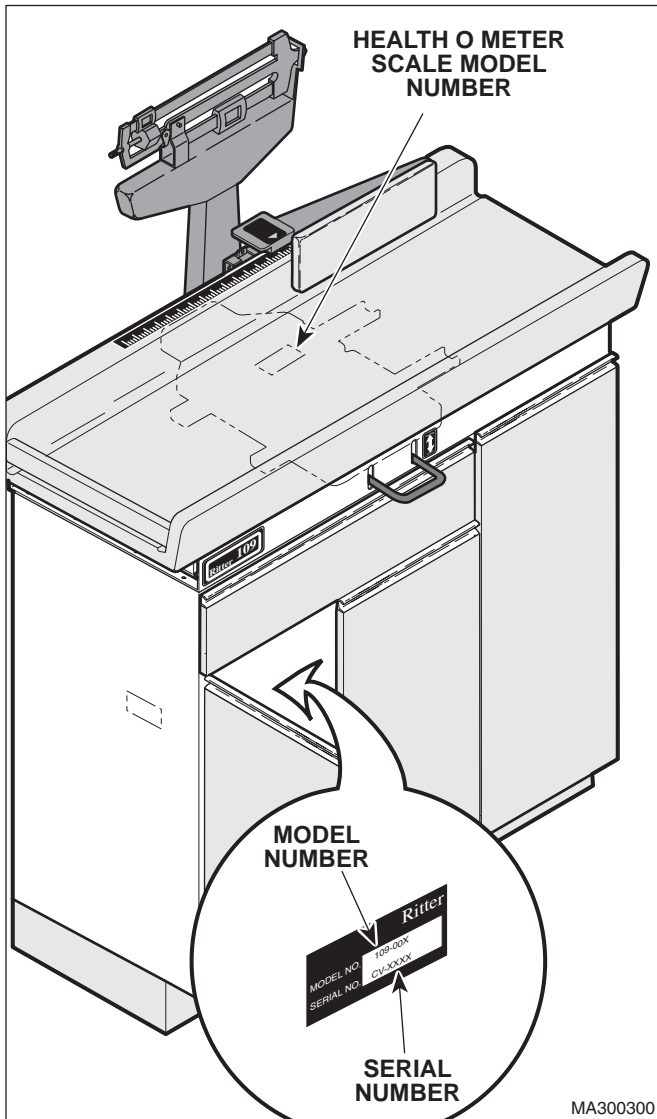


Figure 1-2. Model Number / Serial Number Location

- (2) Refer to the Parts List to determine the item numbers of the parts, part numbers of the parts, descriptions of the parts, and quantities of parts needed and record this data (Refer to para 6.1).

### NOTE

Ask the Purchasing Department of the company that owns the table for this information. Otherwise, this information may be obtained from the dealer that sold the table.

- (3) Determine the installation date of the table and record this data.
- (4) Call Midmark with the recorded information and ask for the Medical Products Technical Services Department. See back cover of this manual for the phone number or use the Fax Order Form (See page 7-2 for Fax Order Form).

## 1.6 Special Tools

None.





**SECTION II  
TESTING AND TROUBLESHOOTING**

**2.1 Operational Test (See Figure 2-1)**

In order to effectively diagnose the malfunction of the table, it may be necessary to perform an operational test as follows:



**DANGER**

Refer to the Operator Manual for complete instructions on operating the table. Failure to do so could result in personal injury.

**NOTE**

The Operational Test, for the most part, only describes what should happen when the table is operated. If the table does something other than described, a problem has been discovered. Refer to the Troubleshooting Guide to determine the cause of the problem and its correction.

Also, this operational test procedure is based on units with Serial Numbers CV-1000 Thru Present that have a scale; some units do not have a scale. Units with Serial Numbers AH-1000 Thru Present may not have a scale and will not have a table top locking mechanism or a linear scale.

- (1) Move the table top locking handle to the LOCK position. Attempt to move the table top (See Figure 2-1).
- (2) Observe. The table top should be firmly locked into a stationary position.
- (3) Move the table top locking handle to the UNLOCK position.
- (4) Observe. The table top should not be locked into a stationary position anymore. Look between the table top and the base. There should be a approximately a 1/4 in. (6.35 mm) gap between locking rails and bottom of table top; at the very least there should not be any contact.

- (5) Remove any items from table top. Set large poise weight to zero, making sure it is seated in notch and set small poise weight to zero, making sure the small poise weight is pushed firmly against shoulder of the beam.
- (6) Observe. The beam pointer should balance in the center of the trig square, indicating the scale is zeroed.
- (7) Place a known weight (between 20 to 40 lbs. (9.0 to 18.1 kgs) on the center of the table top (Point A). Set the large and small poise weights to the weight setting of the known weight.
- (8) Observe. The beam pointer should center in the trig square, indicating the scale is calibrated and accurate.
- (9) Remove the weights and move the table top locking handle to the LOCK position.
- (10) Extend the linear scale fully. Using a carpenter square, check to see if the linear scale is square with the back of the table top when the scale is fully extended.

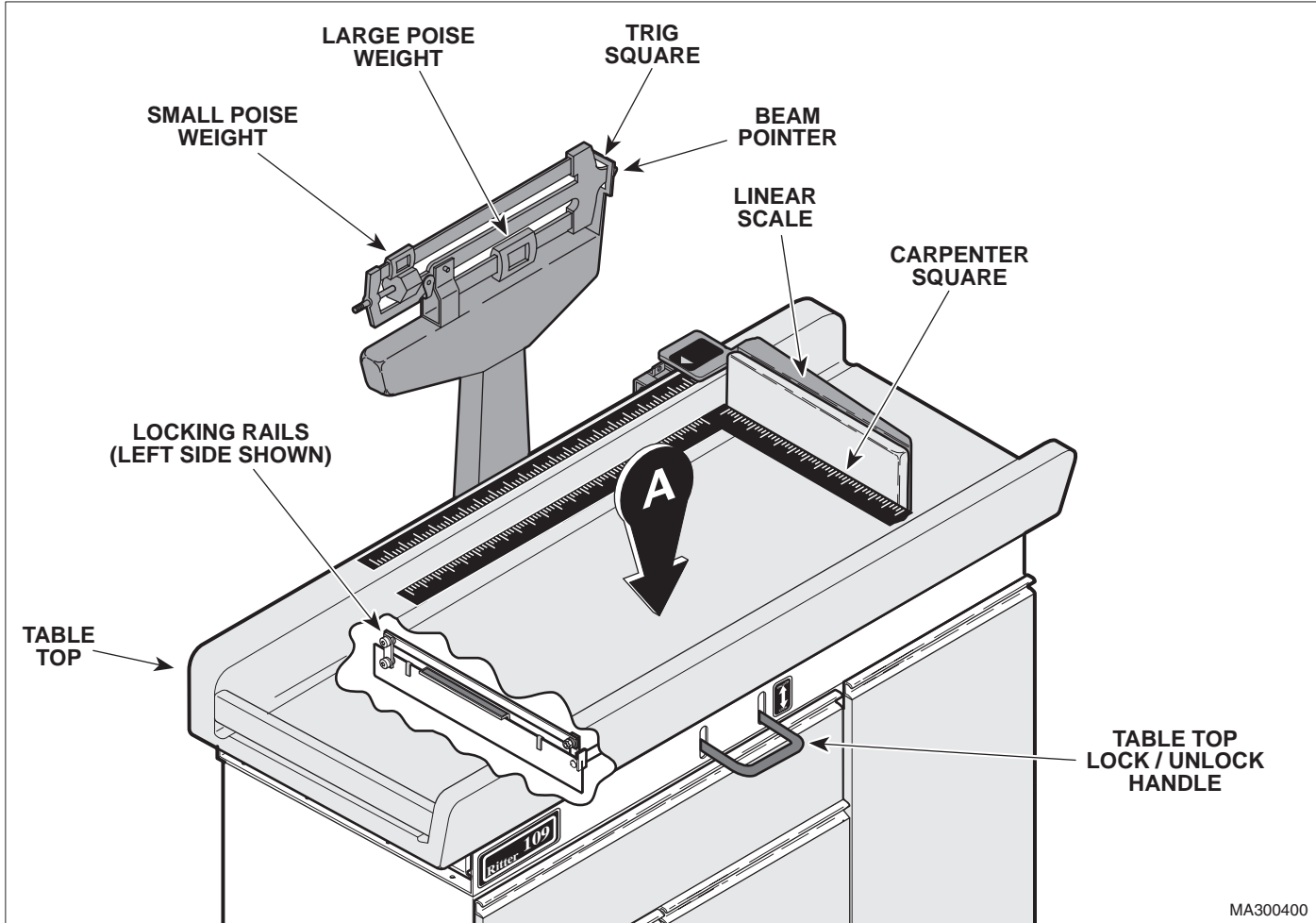
**2.2 Troubleshooting Procedures**

Table 2-1 is a Troubleshooting Guide which is used to determine the cause of the malfunction.

**NOTE**

The troubleshooting guide in Table 2-1 is based on units with Serial Numbers CV-1000 Thru Present that have a scale; some units do not have a scale. Units with Serial Numbers AH-1000 Thru Present may not have a scale, and will not have a linear scale. Also, the table top locking mechanism is a different style on these units.

**SECTION II  
TESTING AND TROUBLESHOOTING**



**Figure 2-1. Operational Test**

## SECTION II TESTING AND TROUBLESHOOTING

**Table 2-1. Troubleshooting Guide**

Problem	Symptom	Probable Cause	Check	Correction
Table top will not lock properly.	When table top locking handle is moved to the LOCK position, the table top is not locked into stationary position (can still be moved).	Table top locking mechanism has bent, broken, or missing components.	Check for bent, broken, or missing components.	Replace any bent, broken, or missing components on the table top locking mechanism. Refer to para 4.5.
		Platform has worn "V" bearings or a broken pivot.	Check for worn "V" bearings or a broken pivot.	Replace platform components. Refer to para 4.5.
Weight scale does not measure weight accurately.	The beam pointer will not center when the large and small poise weights are set to zero.	The beam scale is not zeroed.	Check to see if the beam pointer centers when the large and small poise weights are set to zero.	If beam pointer does not center when the large and small poise weights are set to zero, perform a zero balance adjustment. Refer to para 4.3.
	The measured weight of the patient seems to be inaccurate.	Paper roll is interfering with table top.	Check to see if paper roll is in contact with bottom of table top.	Reduce thickness of paper roll or remove paper roll.
		Locking rails are not releasing properly when table top locking handle is moved to the UNLOCK position.	Check for bent or missing components in the table top locking mechanism. See why locking rails are "hanging up".	Repair or replace any bent, broken, or missing components on the table top locking mechanism. Refer to para 4.5.
		Table is not level.	Check to see if table top is level.	Adjust four leveling screws, located on base of table, to level table.
		Patient is not being centered on the table top before being weighed.	Check to see if table operator is positioning patient properly.	Inform operator of correct patient positioning for weighing.
		Platform has worn "V" bearings or a broken pivot.	Check for worn "V" bearings or a broken pivot.	Replace platform components. Refer to para 4.5.
		Steel connecting rod which connects the beam scale and the weight platform is rubbing against inside of scale pillar.	Check to see if all wire hooks of steel connecting rod face toward the right side of the table.	Position all wire hooks so they face the right side of the table. Refer to para 4.2.
		Beam scale components are worn, resulting in beam scale being out of calibration.	Check the accuracy of the scale with known weights.	Calibrate the scale. Refer to para 4.4.
		Beam scale is out of calibration.	Check the accuracy of the scale with known weights.	Calibrate the scale. Refer to para 4.4.
Linear scale seems to be inaccurate.	Length measurements are inaccurate.	Scale label is not positioned properly.	Use tape measure to check if scale label is positioned properly.	Reposition scale label.
		Linear scale is not square with back of table top.	Use a carpenter square to check squariness of linear scale with respect to the back of the table top.	Align the linear scale. Refer to para 4.6.



**SECTION III  
SCHEDULED MAINTENANCE**

**3.1 Scheduled Maintenance**

Table 3-1 is a Scheduled Maintenance Chart which lists the inspections and services that should be performed periodically on the table. These inspections and services should be performed as often as indicated in the chart.

**NOTE**

The scheduled maintenance chart in Table 3-1 is based on units with Serial Numbers CV-1000 Thru Present that have a scale; some units do not have a scale. Units with Serial Numbers AH-1000 Thru Present may not have a scale, and will not have a linear scale. Also, the table top locking mechanism is a different style on these units.

**Table 3-1. Scheduled Maintenance Chart**

Interval	Inspection or Service	What to Do
Semi-annually	Obvious damage	Visually check condition of examination table for obvious damage such as: cracks in components, missing components, dents in components, or any other visible damage which would cause examination table to be unsafe to operate or would compromise the performance of the table. Repair examination table as necessary.
	Fasteners / hardware	Check table for missing or loose fasteners / hardware. Replace any missing hardware and tighten any loose hardware as necessary.
	Warning and instructional decals	Check for missing or illegible decals. Replace decals as necessary.
	Pivot points / moving parts / accessories	Lubricate all exposed pivot points, moving parts, and accessories with silicone based lubricant. Refer to para 4.5 for access.
	Table top locking mechanism	Check that table top is stationary when table top locking handle is in the LOCK position. Check that table top floats freely on the scale platform when the table top locking handle is in the UNLOCK position. If not replace any bent, broken, or missing components on the table top locking mechanism. If necessary, replace platform components. Refer to para 4.5.
	Beam scale Accuracy	Check to see if beam scale reading matches a known weight placed on the table top. If not, calibrate the scale. Refer to para 4.4.
	Beam scales zero balance	Check to see if scale is zeroed. If not, perform a zero balance adjustment. Refer to para 4.3.
	Linear scale	Use carpenter square to ensure linear scale is square with back of table top when fully extended. If not, align the linear scale. Refer to para 4.6.
	Levelness of table	Check to see if table is level. If not, level table by adjusting leveling screws; there is one located at each corner of the table.
	Upholstery	Check upholstered table top for rips, tears, or excessive wear. Replace table top if necessary.
	Operational Test	Perform an Operational Test to determine if the table is operating within its specifications (Refer to para 2.1). Replace or adjust any malfunctioning components.



**SECTION IV  
MAINTENANCE / SERVICE INSTRUCTIONS**

**4.1 Introduction**



**DANGER**

Refer to the Operator Manual for complete instructions on operating the table. Failure to do so could result in personal injury.

**NOTE**

Perform an operational test on the table after the repair is completed to confirm the repair was properly made and that *all* malfunctions were repaired.

Also, the following procedures are based on units with Serial Numbers CV-1000 Thru Present that have a scale; some units do not have a scale. Units with Serial Numbers AH-1000 Thru Present may not have a scale, and will not have a table top locking mechanism or a linear scale.

The following paragraphs contain removal, installation, repair, and adjustment procedures for the table.

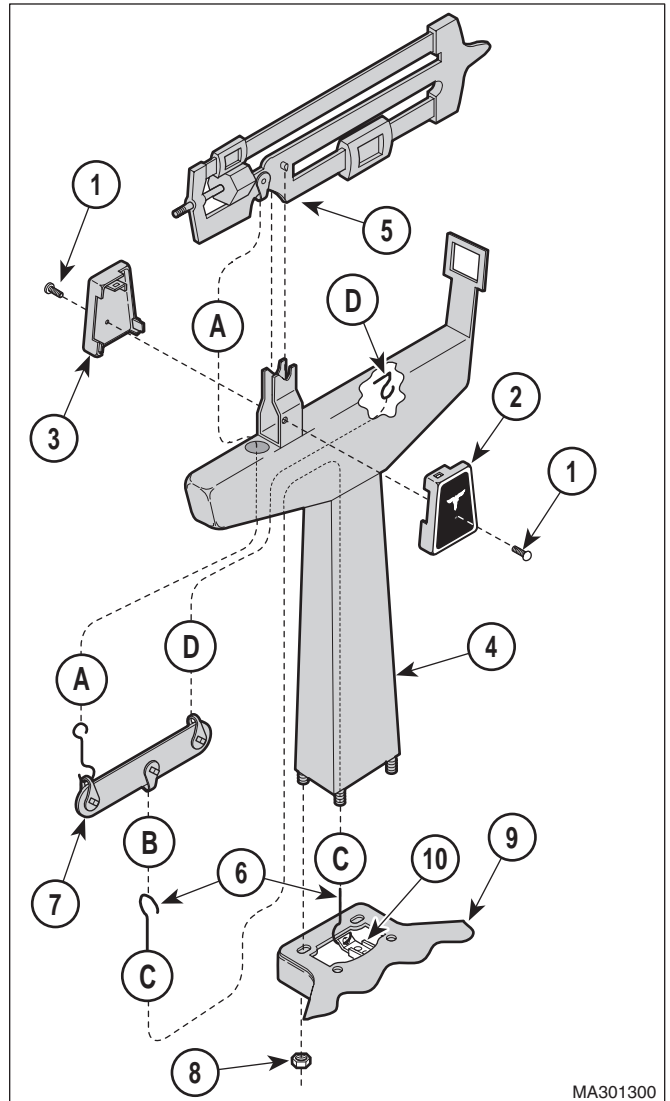
**4.2 Beam Scale Components Removal / Installation**

**A. Removal**

- (1) Remove two screws (1, Figure 4-1), front cap (2), and back cap (3) from pillar assembly (4).
- (2) Disconnect wire loop (A) from beam scale (5).
- (3) Remove beam scale (5) from pillar assembly (4).
- (4) Disconnect wire loops (B and C) and remove connection rod (6).
- (5) Disconnect lever assembly (7) from wire loop (D) and remove lever assembly.
- (6) Remove four locknuts (8) and pillar assembly (4) from base assembly (9).

**B. Installation**

- (1) Install pillar assembly (4) on base assembly (9) and secure with four locknuts (8).



**Figure 4-1. Beam Scale Components Removal / Installation**



**EQUIPMENT ALERT**

The open ends of all wire loops must face the operator's right side of the table after being installed. Failure to do so will result in inaccurate readings.

- (2) Position lever assembly (7) inside pillar assembly (4); then connect lever assembly to wire loop (D).

## SECTION IV MAINTENANCE / SERVICE

- (3) Connect wire loop (B) of connection rod (6) to lever assembly (7); then connect wire loop (C) of connection rod (6) to calibrating arm (10).
- (4) Install beam scale (5) on pillar assembly (4).

### NOTE

Pull upward gently on wire loop (A) to create slack so wire loop can be connected to beam scale.

- (5) Connect wire loop (A) of lever assembly (7) to beam scale (5).
- (6) Install back cap (3) and front cap (2) over beam scale (5) and secure with two screws (1).
- (7) Perform zero balance adjustment (Refer to para 4.3).
- (8) Calibrate the scale (Refer to para 4.4).

### 4.3 Zero Balance Adjustment

#### A. Removal

- (1) Move the table top locking handle (1, Figure 4-2) to UNLOCK position.
- (2) Push down on center of table top (Point A) a few times to align and exercise all internal parts.
- (3) Remove any items from table top.
- (4) Set large poise weight (2) to zero setting, making sure it is seated in notch and set small poise weight (3) to zero setting by making sure the small poise weight is pushed firmly against shoulder of the beam (all the way to left).
- (5) Observe. The beam pointer (4) should center in the trig square (5), indicating the scale is zeroed.
- (6) If the beam pointer (4) centers, no adjustment is necessary. If the beam pointer does not center, go to step 7.

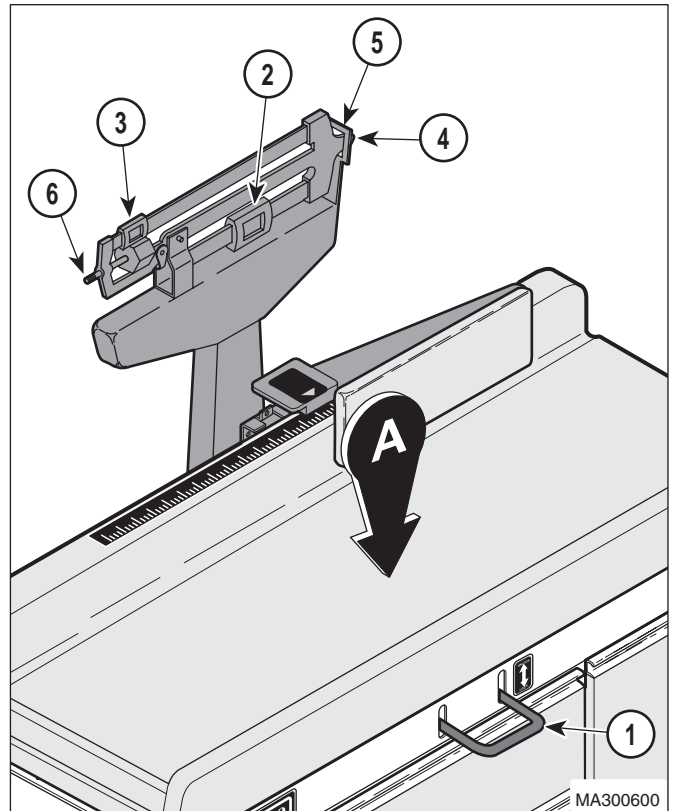


Figure 4-2. Zero Balance Adjustment

### NOTE

If the beam pointer touches the bottom of the trig square or stabilizes below the centerline of the trig square, turn the zero adjustment screw in a clockwise direction. If the beam pointer touches the top of the trig square or stabilizes above the centerline of the trig square, turn the zero adjustment screw in a counterclockwise direction.

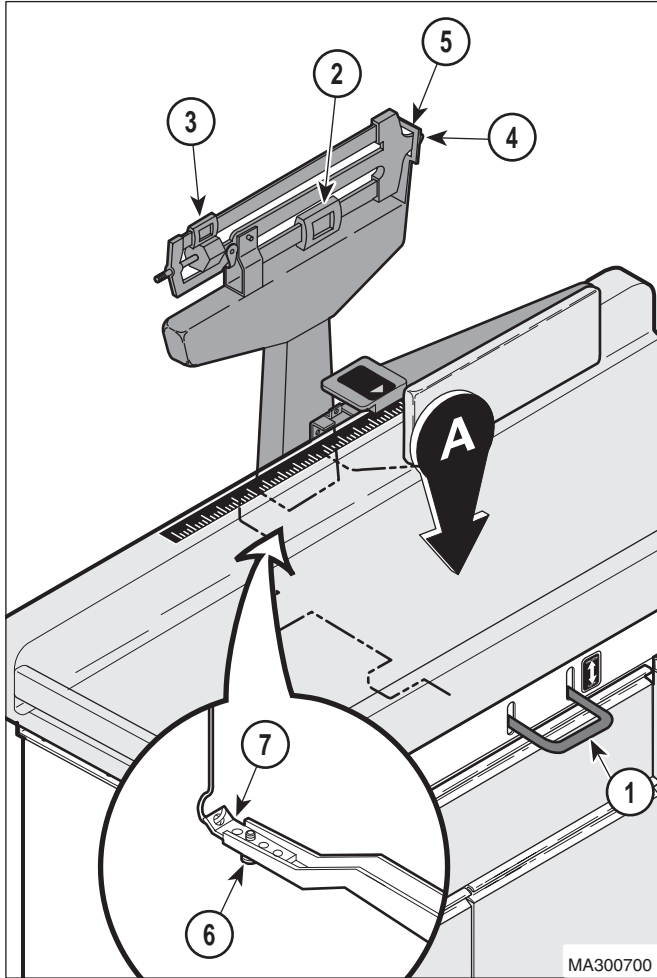
- (7) Turn the zero adjustment screw (6) in or out until the beam pointer (4) centers in the trig square (5).

### 4.4 Scale Calibration

#### A. Removal

- (1) Move the table top locking handle (1, Figure 4-3) to UNLOCK position.
- (2) Push down on center of table top a few times to align and exercise all internal parts.
- (3) Remove any items from table top.





**Figure 4-3. Scale Calibration**

**NOTE**

Using a test weight between 20 to 40 lbs. (9.0 to 18.1 kgs.) is recommended.

- (4) Place a test weight, or a weight which has been measured with a calibrated scale known to be accurate, on the center of the table top (Point A).
- (5) Using the large poise weight (2) and small poise weight (3), set scale to a setting which is equal to test weight.
- (6) If the beam pointer (4) centers in trig square (5), no adjustment is necessary. If the beam pointer does not center in trig square, go to step 7.

**NOTE**

If the beam pointer touches the bottom of the trig square or stabilizes below the centerline of the trig square, push the calibrating arm inward. If the beam pointer touches the top of the trig square or stabilizes above the centerline of the trig square, pull the calibrating arm outward.

- (7) Loosen screw (6); then pull the calibrating arm (7) inward or outward, as determined in the above note, until the beam pointer (4) is centered in the trig square (5). Tighten screw (6).

**4.5 Platform Components Access or Removal / Installation**

**A. Removal**

**NOTE**

Performing steps 1 and 2 will gain access to platform components. Performing steps 1 thru 4 will remove platform assembly.

- (1) Pull drawer (1, Figure 4-4) out until resistance is felt; then firmly grasp drawer and continue to pull *straight* out until drawer is removed from table.
- (2) Remove four screws (2), lockwashers (3), washers (4), and table top (5) from base (6).
- (3) Remove screw (7) and calibrating arm (8) from platform arm (9) and wire hook (10).
- (4) Remove four nuts (11) and beam scale assembly (12) from platform (13).
- (5) Remove four screws (14), lockwashers (15), and platform (13) from table top (5).

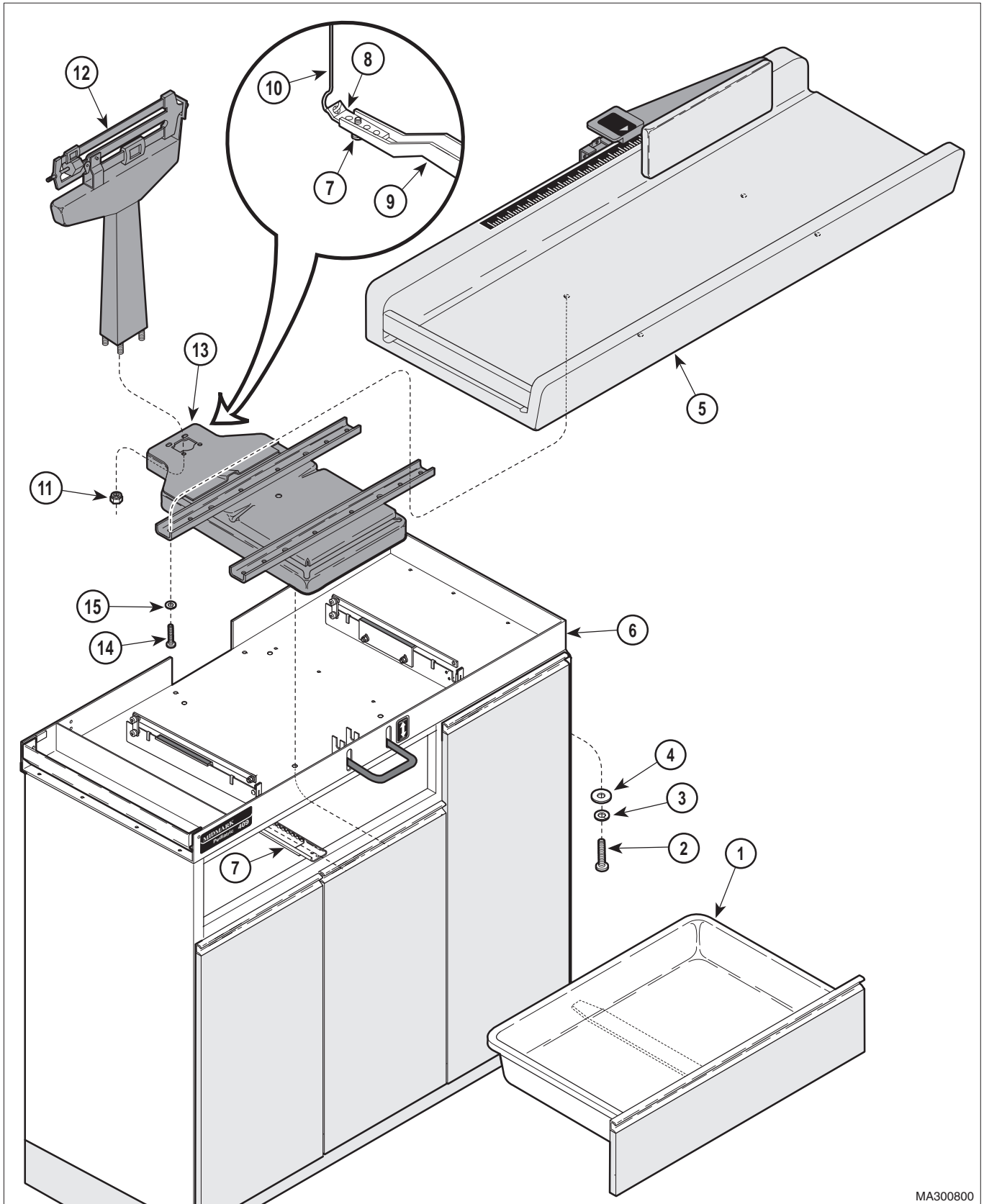
**B. Installation**

- (1) Install platform (13) on table top (5) and secure with four lockwashers (15) and screws (14).

**NOTE**

If installing a new beam scale, skip steps 2 and 3. Then after step 5, install the new beam scale components (Refer to para 4.2).

**SECTION IV**  
**MAINTENANCE / SERVICE**



MA300800

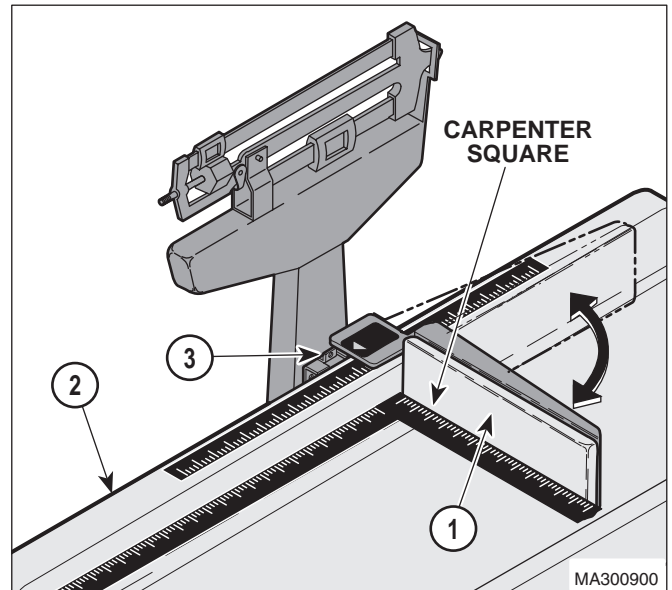
**Figure 4-4. Platform Components Removal / Installation**

- (2) Install beam scale assembly (12) on platform (13) and secure with four nuts (11).
- (3) Install calibrating arm (8) on platform arm (9) and wire hook (1) and secure in position with screw (7).
- (4) Install table top (5) on base (6) and secure with four washers (4), lockwashers (3), and screws (2).
- (5) Install drawer (1) by pushing drawer *straight* into drawer slide (7).

## 4.6 Linear Scale Alignment

### A. Removal

- (1) Open linear scale (1, Figure 4-5) to its fully extended position as shown in illustration.
- (2) Using a carpenter square, check to see if the linear scale (1) is square with the back of the table top (2) when the scale is fully extended.
- (3) If linear scale (1) is not square, adjust setscrew (3) until linear scale is square with the back of the table top (2).



**Figure 4-5. Linear Scale Alignment**



**SECTION V  
SCHEMATICS AND DIAGRAMS**

**SECTION V  
SCHEMATICS AND DIAGRAMS**

None are required.



## **SECTION VI PARTS LIST**

### **6.1 Introduction**

The illustrated parts list provides information for identifying and ordering the parts necessary to maintain the unit in peak operating condition. Refer to paragraph 1.5 for parts ordering information.

The parts list also illustrates disassembly and assembly relationships of parts.

### **6.2 Description of Columns**

The *Item* column of the parts list gives a component its own unique number. The same number is given to the component in the parts illustration. This allows a part number of a component to be found if the technician can visually spot the part on the illustration. The technician simply finds the component in question on the illustration and notes the item number of that component. Then, he finds that item number in the parts list. The row corresponding to the item number gives the technician the part number, a description of the component, and quantity of parts per subassembly. Also, if a part number is known, the location of that component can be determined by looking for the item number of the component on the illustration.

The *Part No.* column lists the MIDMARK part number for that component.

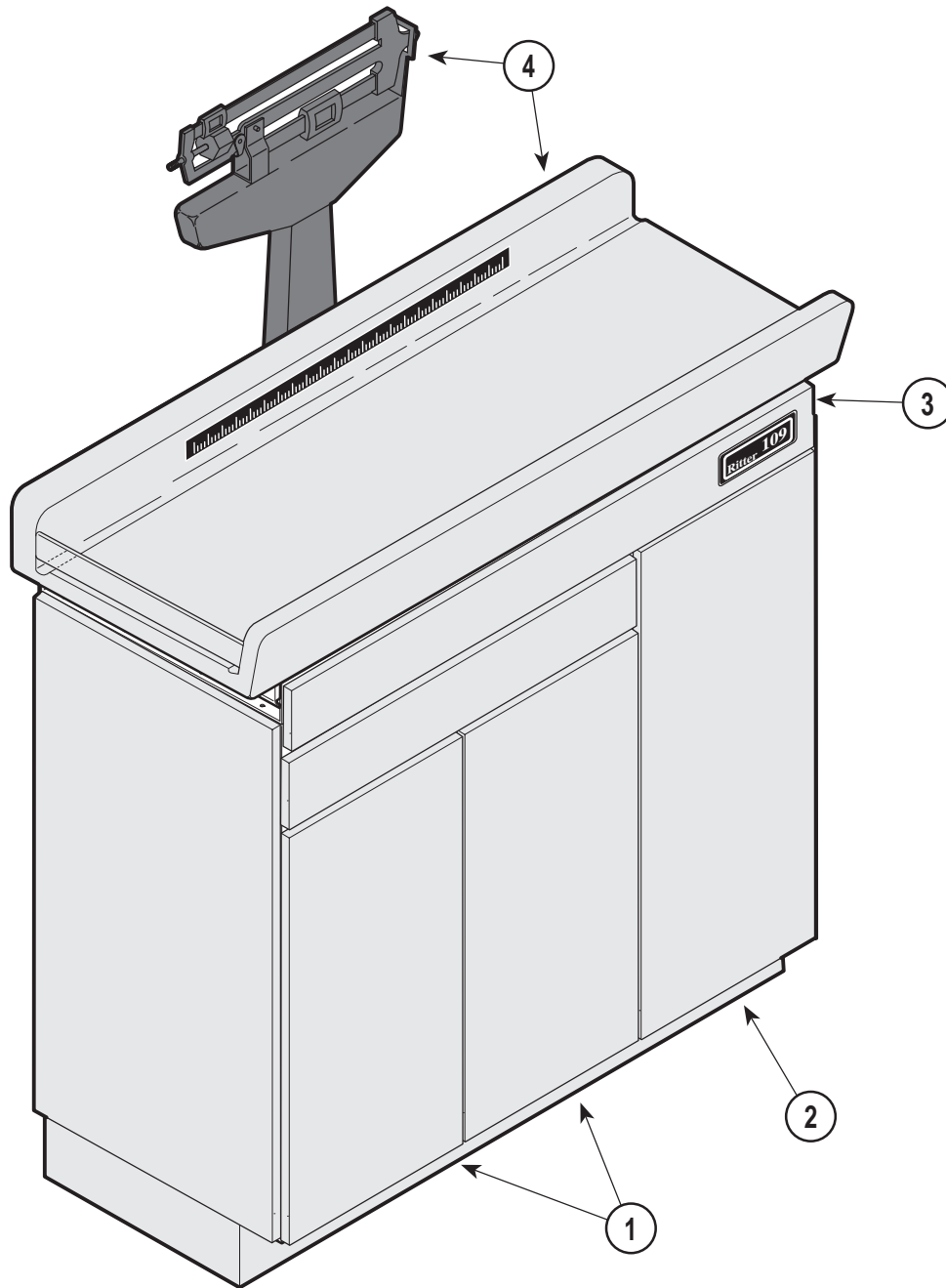
The *Description* column provides a physical description of the component.

The *Qty.* column lists the number of units of a particular component that is required for the subassembly. The letters "AR" denote "as required" when quantities of a particular component cannot be determined, such as: adhesive.

Bullets [ • ] in the *Part No.* column and the *Description* column show the indenture level of a component. If a component does not have a bullet, it is a main component of that illustration. If a component has a bullet, it is a subcomponent of the next component listed higher in the parts list than itself that does not have a bullet. Likewise, if a component has two bullets, it is a subcomponent of the next component listed higher in the parts list than itself that has only one bullet.

### **6.3 Torque Specifications and Important Assembly Notes**

When specific assembly torque specifications, measurements, or procedures have been identified, by our engineering department, as required to assure proper function of the unit, those torque specifications measurements, and procedures will be noted on the parts illustrations. Adherence to these requirements is essential.



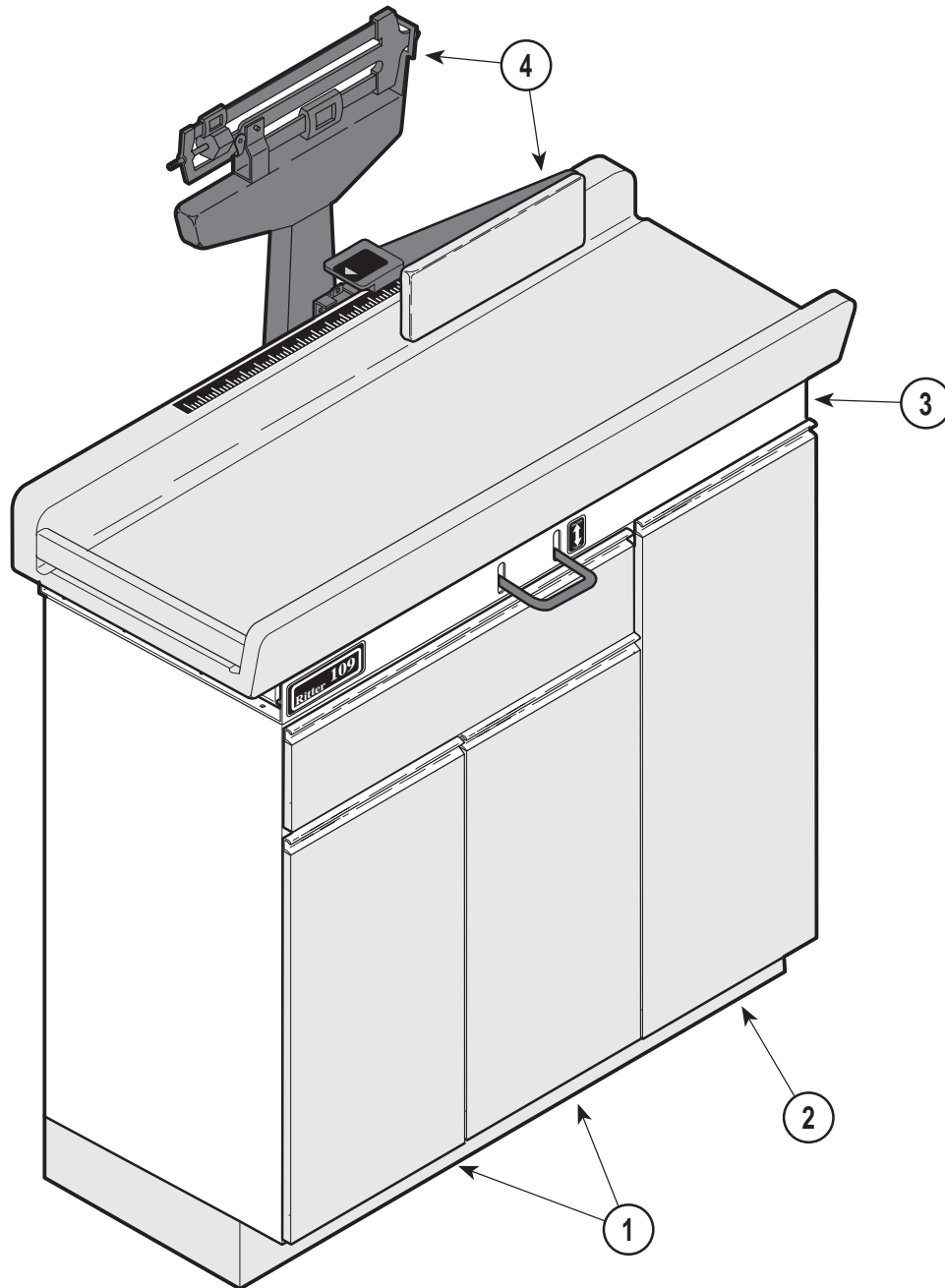
MA298200

## Used on units with Serial Number AH-1000 thru Present

Item	Part No.	Description	Page	Item	Part No.	Description	Page
	109-000	Pediatric Examination Table (With Scale) .....	Ref	4	•	• Upper Wrap Assembly (With Mechanical Scale) .....	6-6
	109-002	Pediatric Examination Table (Without Scale) .....	Ref	5	•	• Table Top Assembly (Without Scale) .....	6-7
1	•	• Left Hand Cabinet Assembly .....	6-3	6	•	• Table Top Assembly (With Mechanical Scale) .....	6-8
2	•	• Right Hand Cabinet Assembly .....	6-4				
3	•	• Upper Wrap Assembly (Without Scale) .....	6-5				

Always Specify Model & Serial Number





MA298100

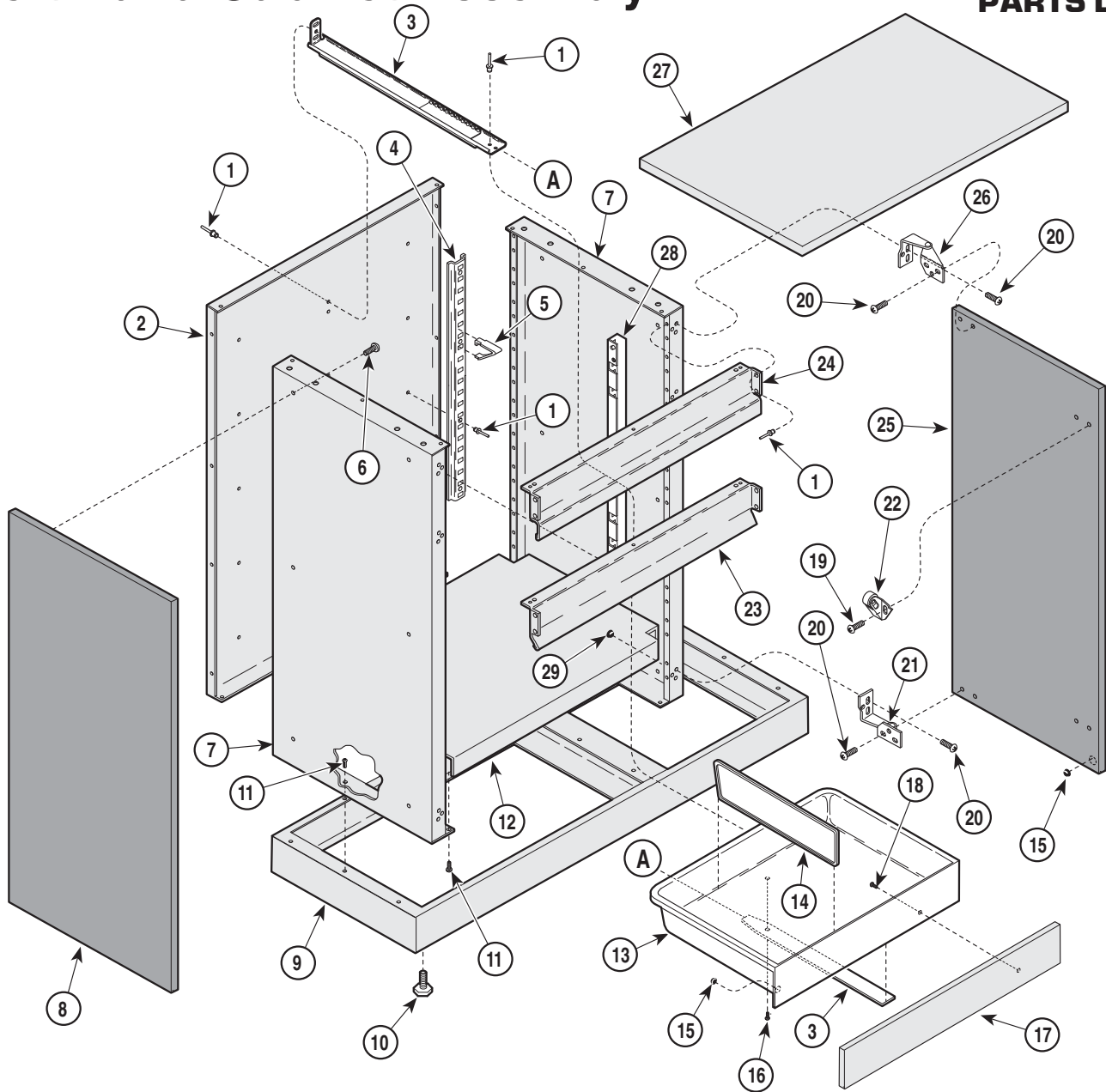
## Used on units with Serial Number CV-1000 thru Present

Item	Part No.	Description	Page	Item	Part No.	Description	Page
	109-003	Pediatric Examination Table (With Scale) .....	Ref	4	•	• Upper Wrap Assembly (With Mechanical Scale) .....	6-6.1
	109-005	Pediatric Examination Table (Without Scale) .....	Ref	5	•	• Table Top Assembly (Without Scale) .....	6-7.1
1	•	• Left Hand Cabinet Assembly .....	6-3.1	6	•	• Table Top Assembly (With Mechanical Scale) .....	6-8.1
2	•	• Right Hand Cabinet Assembly .....	6-4.1				
3	•	• Upper Wrap Assembly (Without Scale) .....	6-5.1				

Always Specify Model & Serial Number

# Left Hand Cabinet Assembly

## SECTION VI PARTS LIST



MA298300

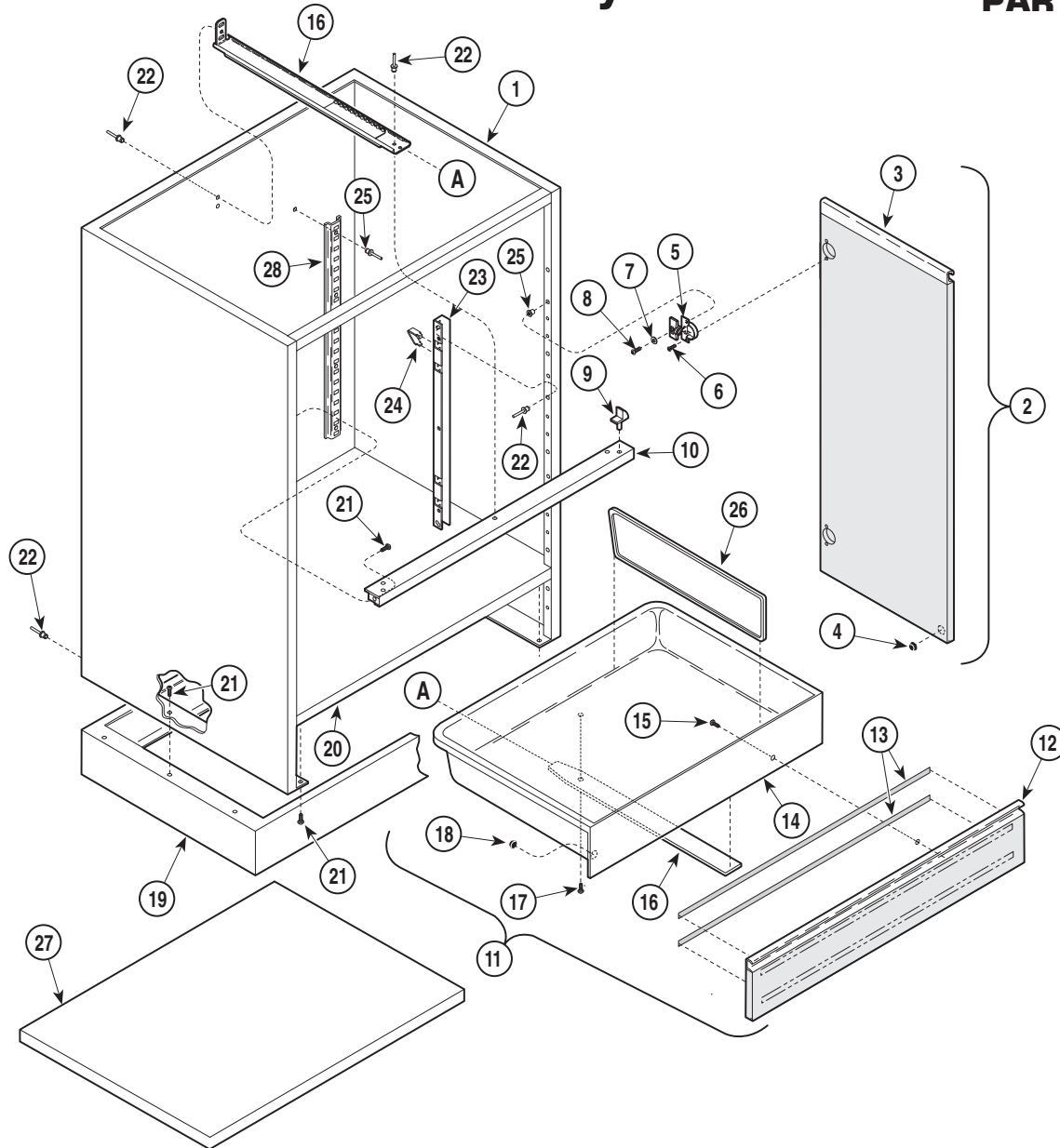
### Used on units with Serial Number AH-1000 thru Present

Item	Part No.	Description	Qty.	Item	Part No.	Description	Qty.
1	042-0010-03	Pop Rivet .....	19	16	040-008-26	Screw .....	1
2	050-0975-00	Large Back .....	1	17	055-47XX-00	Drawer Front (Specify Color) .....	1
3	016-0135-00	Drawer Slide .....	1	18	040-0006-00	Screw .....	6
4	016-0024-00	Shelf Standard .....	2	19	040-0006-26	Screw .....	4
5	016-0023-00	Shelf Support .....	4	20	040-0006-01	Screw .....	12
6	040-0006-00	Screw .....	6	21	016-0012-05	L. H. Hinge .....	2
7	050-0974-00	Side Panel .....	2	22	016-0004-00	Roller Catch .....	2
8	055-57XX-00	Side Panel (Specify Color) .....	1	23	050-0878-00	Mullion .....	1
9	030-0329-00	Base Weldment .....	1	24	050-0225-00	Mullion .....	1
10	016-0001-00	Leveling Screw .....	4	25	055-15XX-XX	Cabinet Drawer (Specify Color) .....	2
11	040-0010-35	Screw .....	8	26	016-0012-04	R. H. Hinge .....	2
12	050-0977-00	Large Bottom .....	1	27	050-0979-00	Shelf .....	1
13	053-0124-00	Plastic Drawer .....	1	28	050-0218-00	Standard Support .....	2
14	053-0012-00	Drawer Divider .....	3	29	041-0007-00	Speed Nut .....	12
15	053-0013-00	Self Sticking Bumper .....	6				

Always Specify Model & Serial Number

# Left Hand Cabinet Assembly

## SECTION VI PARTS LIST



MA297900

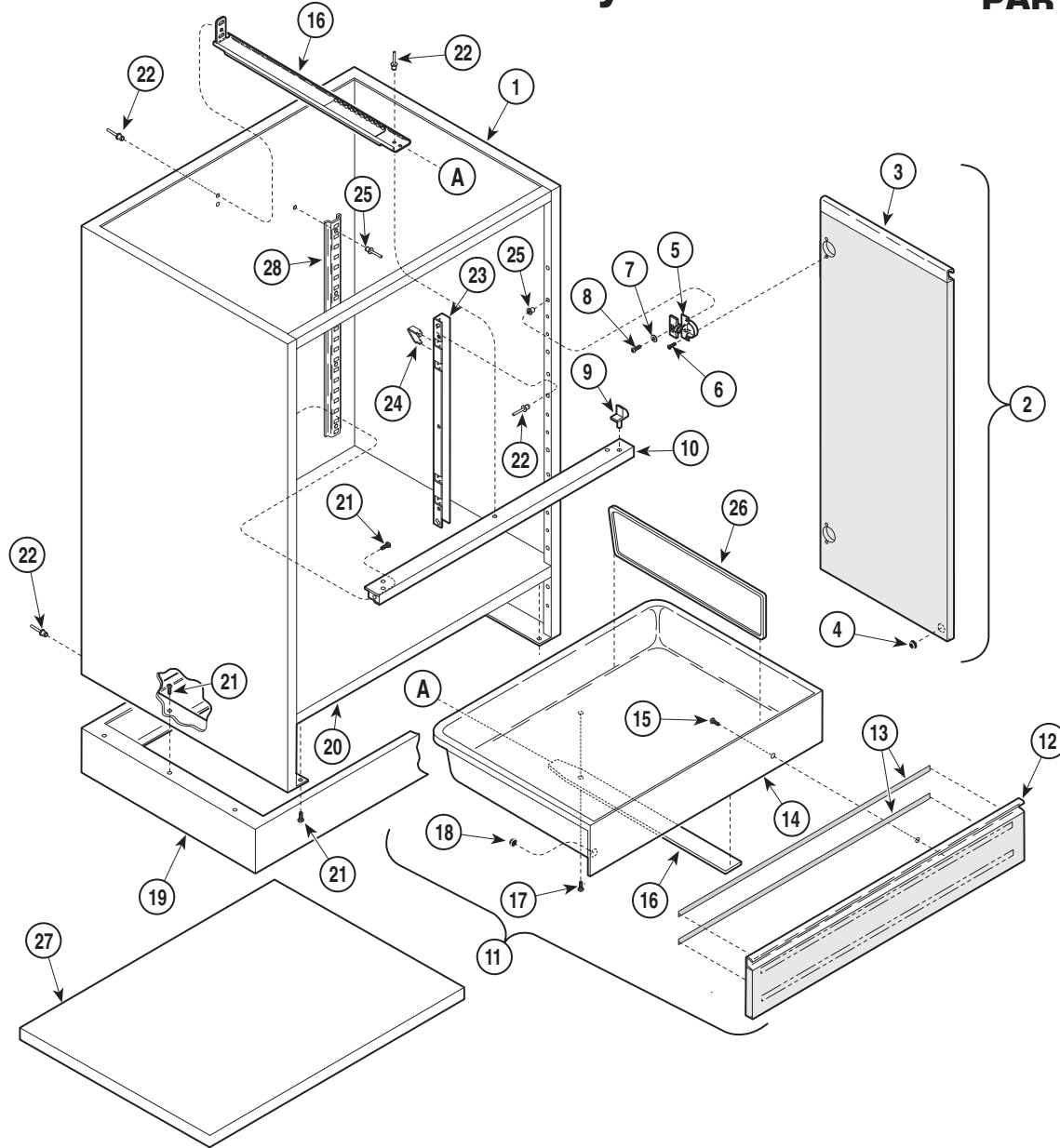
### Used on units with Serial Number CV-1000 thru CV-2538

Item	Part No.	Description	Qty.	Item	Part No.	Description	Qty.
1	030-0627-20	Cabinet Weldment .....	1	14	• 053-0266-02	• Cabinet Drawer .....	1
2	029-1187-02	Cabinet Door Assembly - L.H. (Includes Items 3 thru 6 [Not Shown]) .....	1	15	• 040-0006-63	• Screw .....	6
	029-1187-03	Cabinet Door Assembly - R.H. (Includes Items 3 thru 6 [Shown]) .....	1	16	• N.L.A.	• Drawer Slide .....	1
3	• 062-9928-01	• Cabinet Door - L.H. (Not Shown) .....	1	17	• 040-0008-26	• Screw .....	1
	• 062-9927-01	• Cabinet Door - R.H. (Shown) .....	1	18	• 053-0013-00	• Self Sticking Bumper .....	2
4	• 053-0013-00	• Self Sticking Bumper .....	1	19		Base Weldment (Refer to "Right Hand Cabinet Assembly" Elsewhere) .....	1
5	• 016-0510-00	• Door Hinge .....	2	20	050-2705-20	Cabinet Bottom .....	1
6	• 040-0006-40	• Screw .....	4	21	040-0010-00	Screw .....	12
7	045-0001-08	Washer .....	4	22	042-0010-04	Pop Rivet .....	19
8	040-0010-12	Screw .....	4	23	050-3548-10	Shelf Support Bracket .....	2
9	053-0004-00	Drawer Guide .....	2	24	016-0023-00	Shelf Support .....	4
10	050-1631-20	Cabinet Mullion .....	1	25	042-0045-01	Nutsert .....	4
11	N.L.A.	Drawer Assy. (Incl. Items 12 thru 18) ....	1	26	053-0012-01	Drawer Divider .....	3
12	• 062-23XX-00	• Drawer Pull Panel Assembly .....	1	27	050-1294-20	Cabinet Shelf .....	1
13	• 042-0075-01	• Foam Tape .....	42"	28	016-0024-00	Shelf Standard .....	2

Always Specify Model & Serial Number

# Left Hand Cabinet Assembly

## SECTION VI PARTS LIST



MA297900

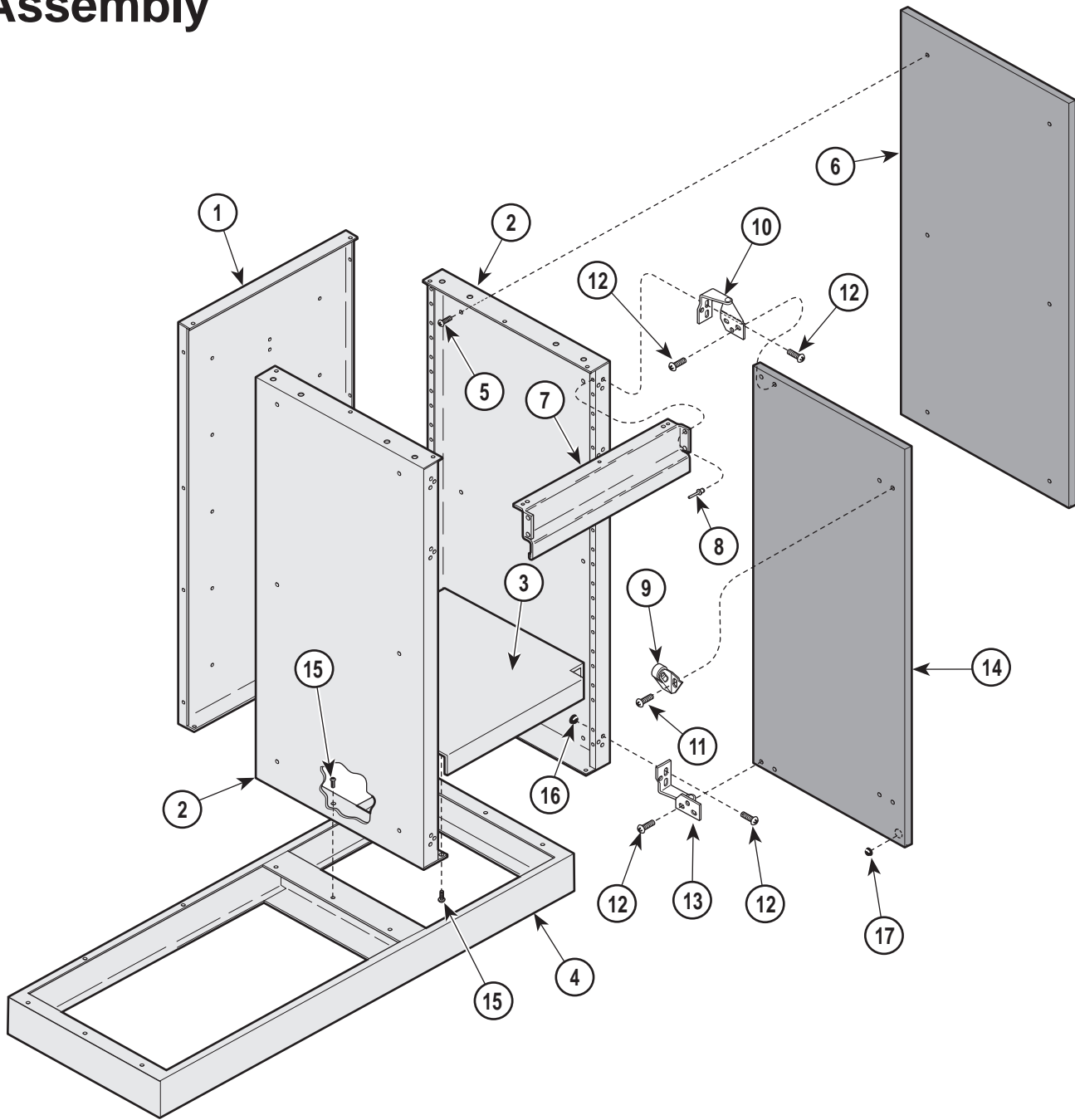
### Used on units with Serial Number CV-2539 thru Present

Item	Part No.	Description	Qty.	Item	Part No.	Description	Qty.
1	030-0905-20	Cabinet Weldment .....	1	14	• 053-0266-02	• Cabinet Drawer .....	1
2	029-1187-02	Cabinet Door Assembly - L.H. (Includes Items 3 thru 6 [Not Shown]) .....	1	15	• 040-0006-63	• Screw .....	6
	029-1187-03	Cabinet Door Assembly - R.H. (Includes Items 3 thru 6 [Shown]) .....	1	16	• N.L.A.	• Drawer Slide .....	1
3	• 062-9928-01	• Cabinet Door - L.H. (Not Shown) .....	1	17	• 040-0008-26	• Screw .....	1
	• 062-9927-01	• Cabinet Door - R.H. (Shown) .....	1	18	• 053-0013-00	• Self Sticking Bumper .....	2
4	• 053-0013-00	• Self Sticking Bumper .....	1	19		Base Weldment (Refer to "Right Hand Cabinet Assembly" Elsewhere) .....	1
5	• 016-0510-00	• Door Hinge .....	2	20	050-2705-20	Cabinet Bottom .....	1
6	• 040-0006-40	• Screw .....	4	21	040-0010-00	Screw .....	12
7	045-0001-08	Washer .....	4	22	042-0010-04	Pop Rivet .....	19
8	040-0010-12	Screw .....	4	23	050-3548-10	Shelf Support Bracket .....	2
9	053-0004-00	Drawer Guide .....	2	24	016-0023-00	Shelf Support .....	4
10	050-1631-20	Cabinet Mullion .....	1	25	042-0045-01	Nutsert .....	4
11	N.L.A.	Drawer Assy. (Incl. Items 12 thru 18) ....	1	26	053-0012-01	Drawer Divider .....	3
12	• 062-23XX-00	• Drawer Pull Panel Assembly .....	1	27	050-1294-20	Cabinet Shelf .....	1
13	• 042-0075-01	• Foam Tape .....	42"	28	016-0024-00	Shelf Standard .....	2

Always Specify Model & Serial Number

# Right Hand Cabinet Assembly

## SECTION VI PARTS LIST



MA298400

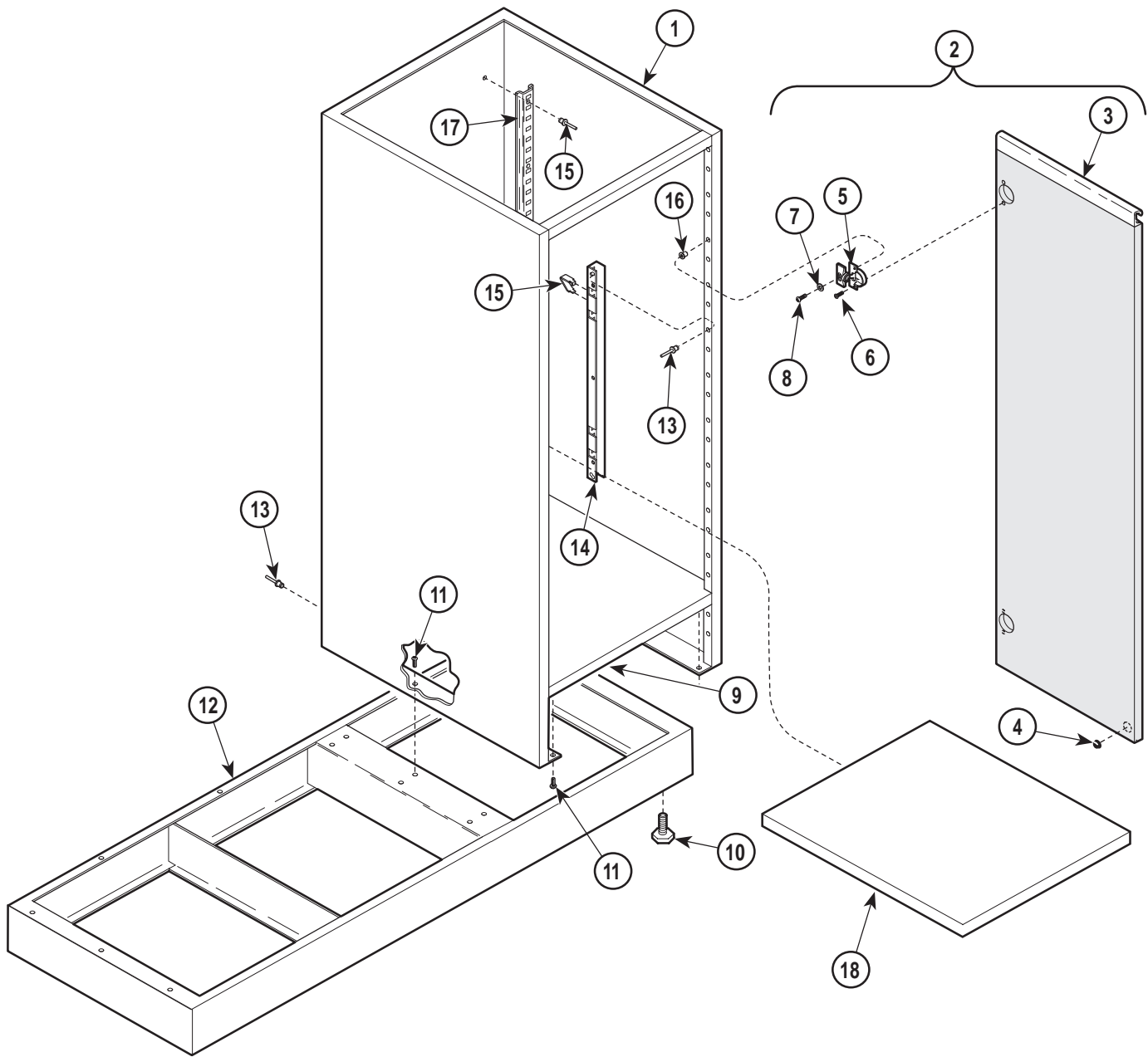
### Used on units with Serial Number AH-1000 thru Present

Item	Part No.	Description	Qty.	Item	Part No.	Description	Qty.
1	050-0976-00	Small Back .....	1	9	016-0004-00	Roller Catch .....	2
2	050-0974-00	Side Panel .....	2	10	016-0012-04	R. H. Hinge .....	1
3	050-0978-00	Small Bottom .....	1	11	040-0006-26	Screw .....	2
4		Base Weldment (Refer to "Left Hand Cabinet Assembly" Elsewhere) .....	1	12	040-0006-01	Screw .....	6
5	040-0006-00	Screw .....	6	13	016-0012-05	L. H. Hinge .....	1
6	055-5700-XX	Side Panel (Specify Color) .....	1	14	055-5600-XX	Side Door (Specify Color) .....	1
7	050-0225-00	Mullion .....	1	15	040-0010-35	Screw .....	8
8	042-0010-03	Pop Rivet .....	12	16	041-0007-00	Speed Nut .....	6
				17	053-0013-00	Self sticking Bumper .....	2

Always Specify Model & Serial Number

# Right Hand Cabinet Assembly

## SECTION VI PARTS LIST



MA298000

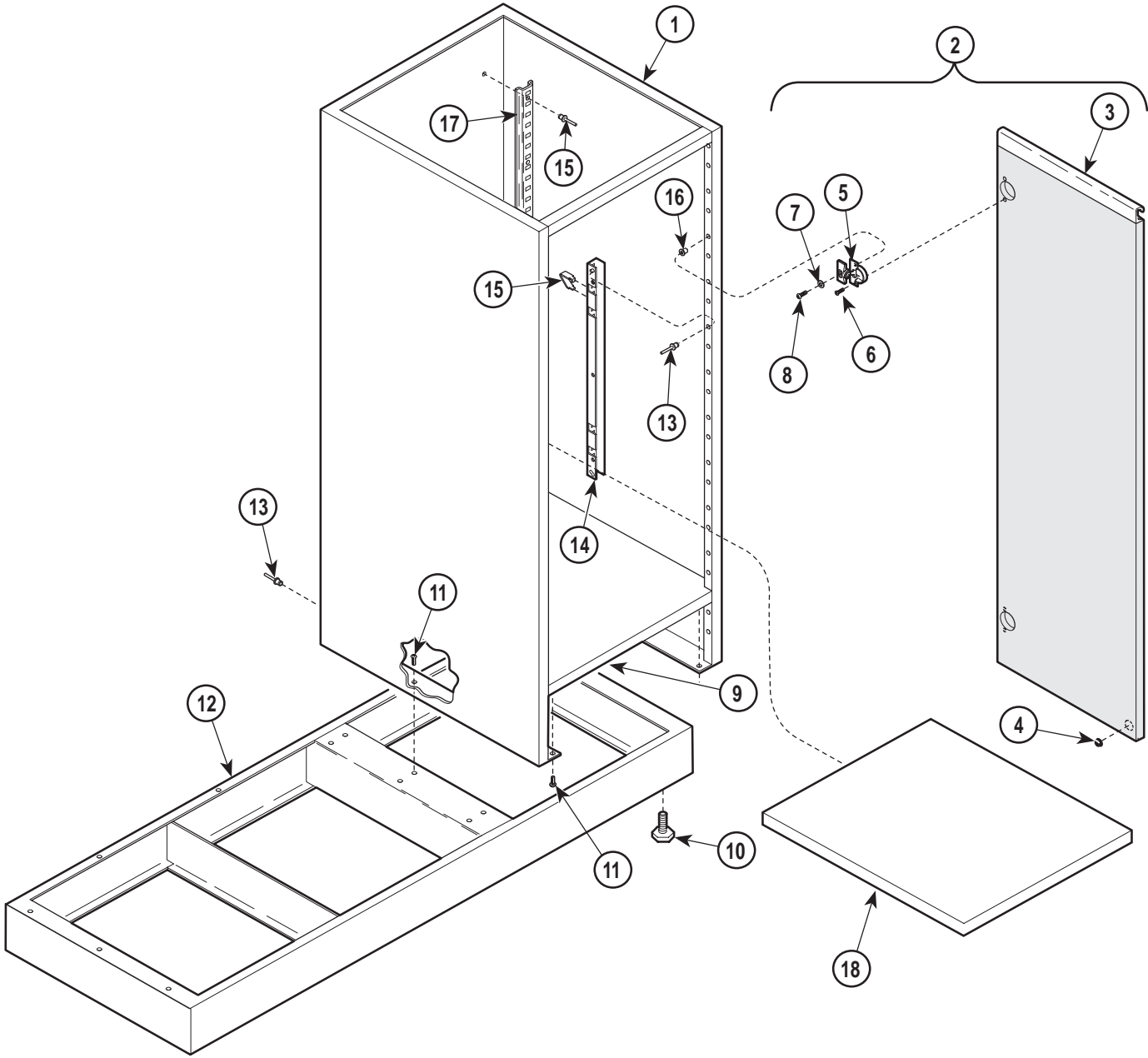
### Used on units with Serial Number CV-1000 thru CV-2538

Item	Part No.	Description	Qty.	Item	Part No.	Description	Qty.
1	030-0626-20	Cabinet Weldment .....	1	10	016-0001-00	Leveling Screw .....	4
2	029-1188-00	Cabinet Door Assembly - R.H. (Includes Items 3 thru 6) .....	1	11	040-0010-00	Screw .....	9
3	• 062-9928-03	• Cabinet Door - R.H. ....	1	12	030-0704-00	Base Weldment .....	1
4	• 053-0013-00	• Self Sticking Bumper .....	1	13	042-0010-04	Pop Rivet .....	16
5	• 016-0510-00	• Door Hinge .....	2	14	050-3548-10	Shelf Support Bracket .....	2
6	• 040-0006-40	• Screw .....	4	15	016-0023-00	Shelf Support .....	4
7	045-0001-08	Washer .....	2	16	042-0045-01	Nutsert .....	4
8	040-0010-12	Screw .....	2	17	016-0024-00	Shelf Standard .....	2
9	050-2704-20	Cabinet Bottom .....	1	18	050-1294-21	Cabinet Shelf .....	2

Always Specify Model & Serial Number

# Right Hand Cabinet Assembly

## SECTION VI PARTS LIST



MA298000

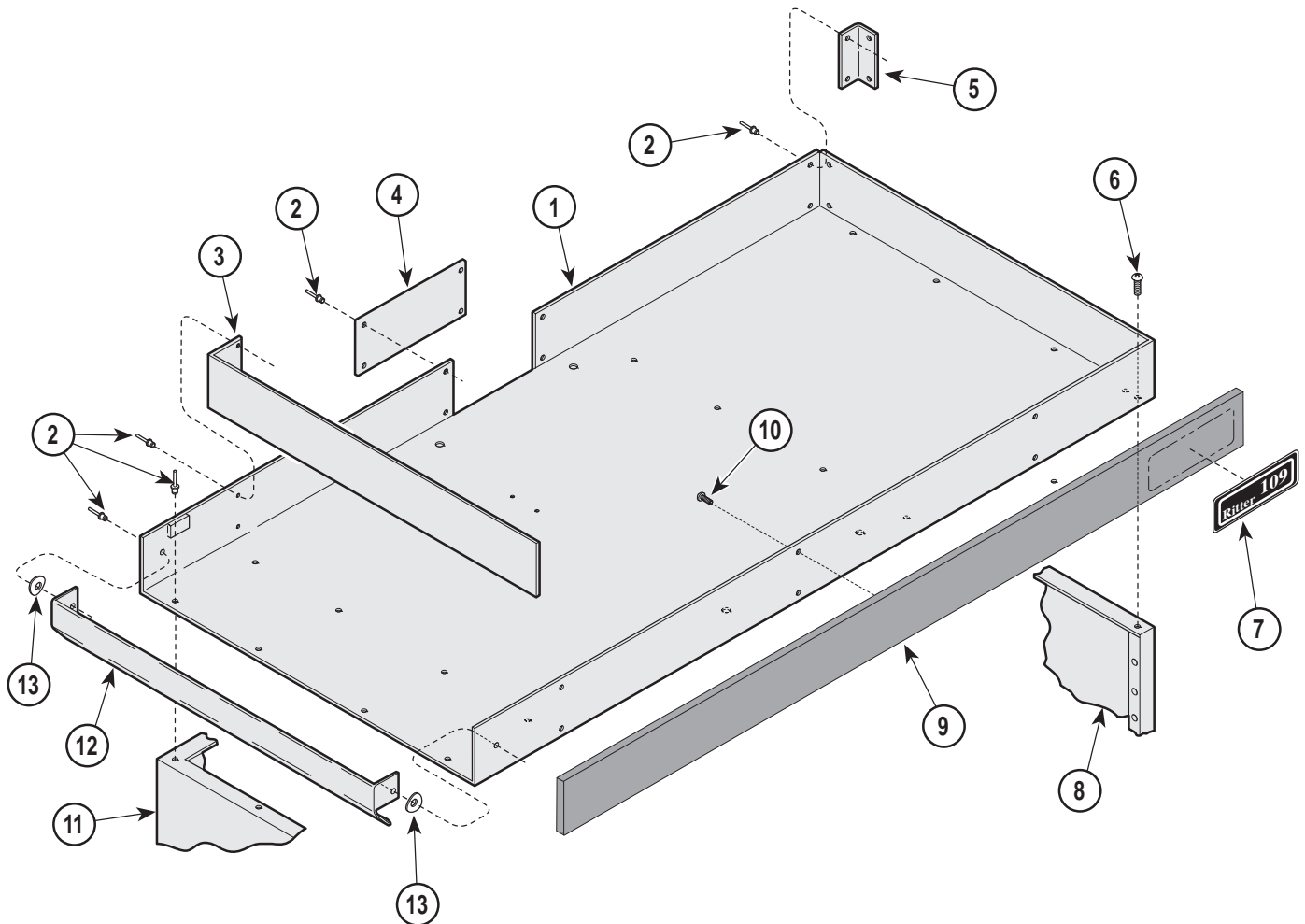
### Used on units with Serial Number CV-2539 thru Present

Item	Part No.	Description	Qty.	Item	Part No.	Description	Qty.
1	030-0904-20	Cabinet Weldment .....	1	10	016-0001-00	Leveling Screw .....	4
2	029-1188-00	Cabinet Door Assembly - R.H. (Includes Items 3 thru 6) .....	1	11	040-0010-00	Screw .....	9
3	• 062-9928-03	• Cabinet Door - R.H. ....	1	12	030-0704-00	Base Weldment .....	1
4	• 053-0013-00	• Self Sticking Bumper .....	1	13	042-0010-04	Pop Rivet .....	16
5	• 016-0510-00	• Door Hinge .....	2	14	050-3548-10	Shelf Support Bracket .....	2
6	• 040-0006-40	• Screw .....	4	15	016-0023-00	Shelf Support .....	4
7	045-0001-08	Washer .....	2	16	042-0045-01	Nutsert .....	4
8	040-0010-12	Screw .....	2	17	016-0024-00	Shelf Standard .....	2
9	050-2704-20	Cabinet Bottom .....	1	18	050-1294-21	Cabinet Shelf .....	2

Always Specify Model & Serial Number

# Upper Wrap Assembly (No Scale)

## SECTION VI PARTS LIST



MA298500

### Used on units with Serial Number AH-1000 thru Present

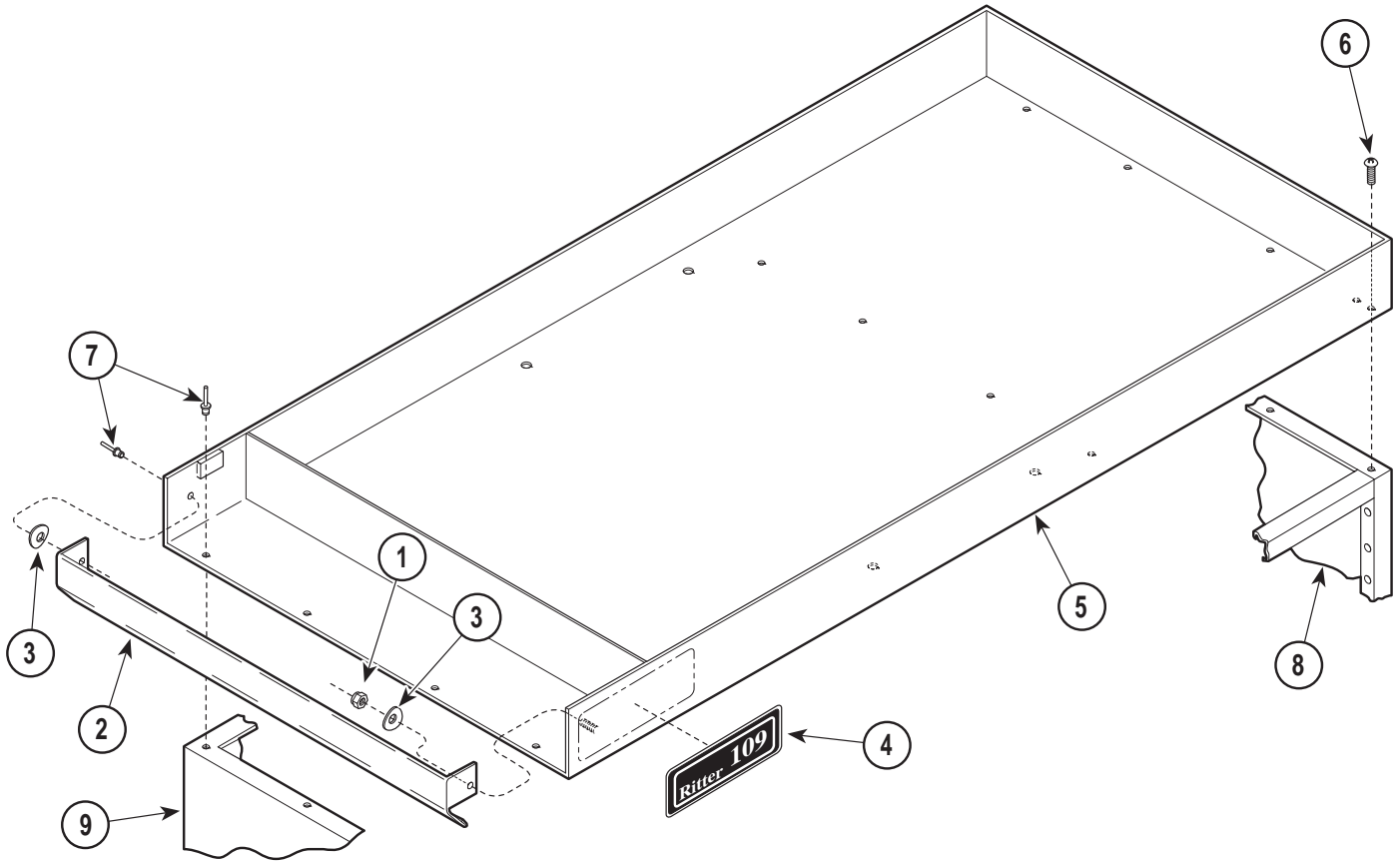
Item	Part No.	Description	Qty.	Item	Part No.	Description	Qty.
1	030-0980-00	Upper Wrap .....	1	9	055-5500-XX	Front Panel (Specify Color) .....	1
2	042-0010-02	Pop Rivet .....	20	10	040-0006-00	Screw .....	6
3	030-0981-00	Paper Roll Stop .....	1	11		Cabinet (Refer to "Left Hand Cabinet Assembly" Elsewhere) .....	Ref
4	030-0984-00	Cover Plate .....	4	12	050-0982-00	Paper Roll Door .....	1
5	050-0987-00	Corner .....	2	13	045-0001-12	Curved Washer .....	2
6	040-0010-00	Screw .....	8				
7	061-0215-06	109 Nameplate .....	1				
8		Cabinet (Refer to "Right Hand Cabinet Assembly" Elsewhere) .....	Ref				

Always Specify Model & Serial Number



# Upper Wrap Assembly (No Scale)

## SECTION VI PARTS LIST



MA297800

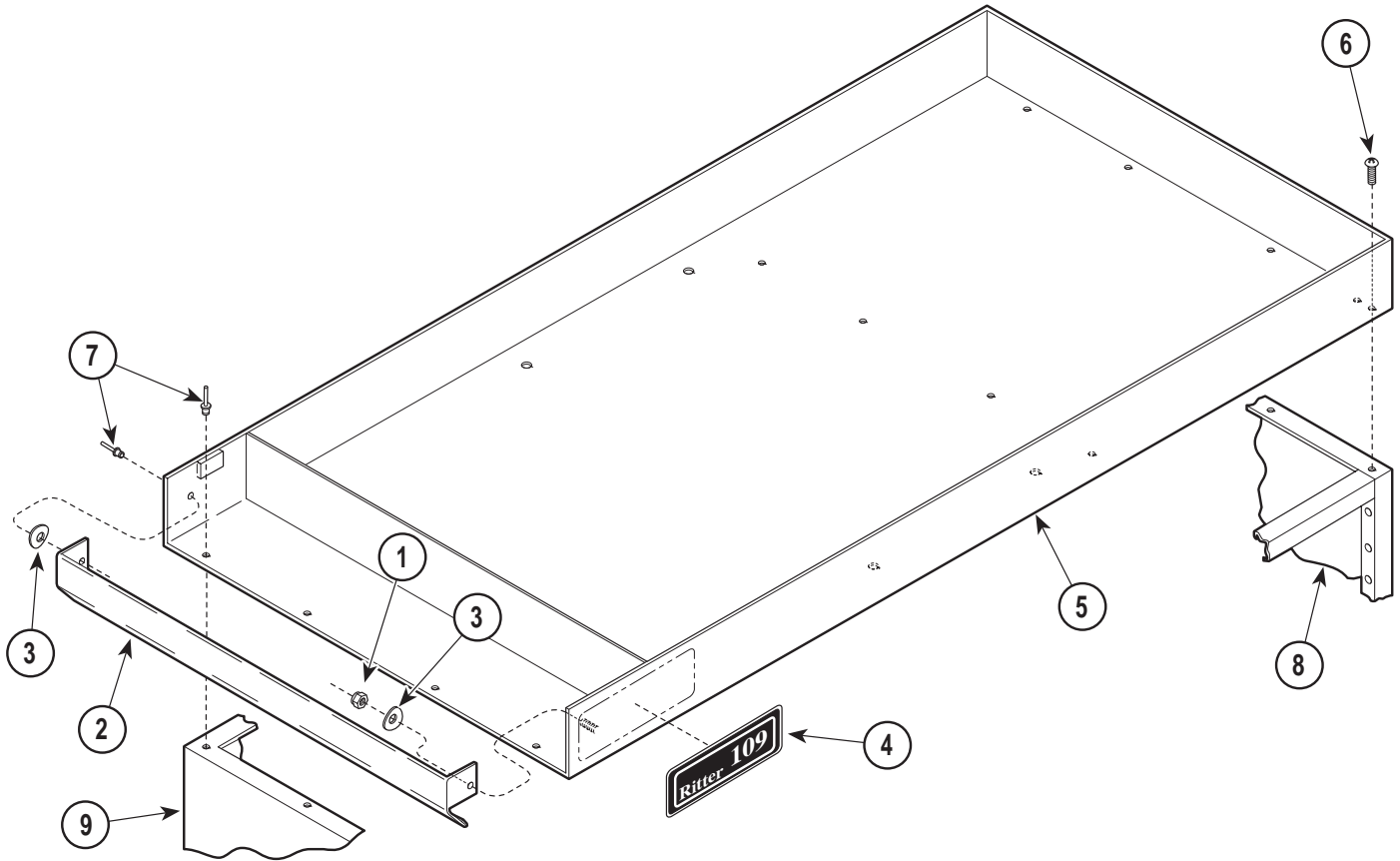
### Used on units with Serial Number CV-1000 thru CV-2538

Item	Part No.	Description	Qty.	Item	Part No.	Description	Qty.
1	041-0010-02	Nut .....	1	7	042-0010-02	Pop Rivet.....	6
2	050-1760-20	Paper Roll Door .....	1	8		Cabinet (Refer to "Right Hand Cabinet Assembly" Elsewhere) .....	Ref
3	045-0001-12	Curved Washer .....	2	9		Cabinet (Refer to "Left Hand Cabinet Assembly" Elsewhere) .....	Ref
4	061-0237-07	109 Nameplate .....	1				
5	030-0706-21	Upper Wrap Weldment .....	1				
6	040-0010-00	Screw .....	8				

Always Specify Model & Serial Number

# Upper Wrap Assembly (No Scale)

## SECTION VI PARTS LIST



MA297800

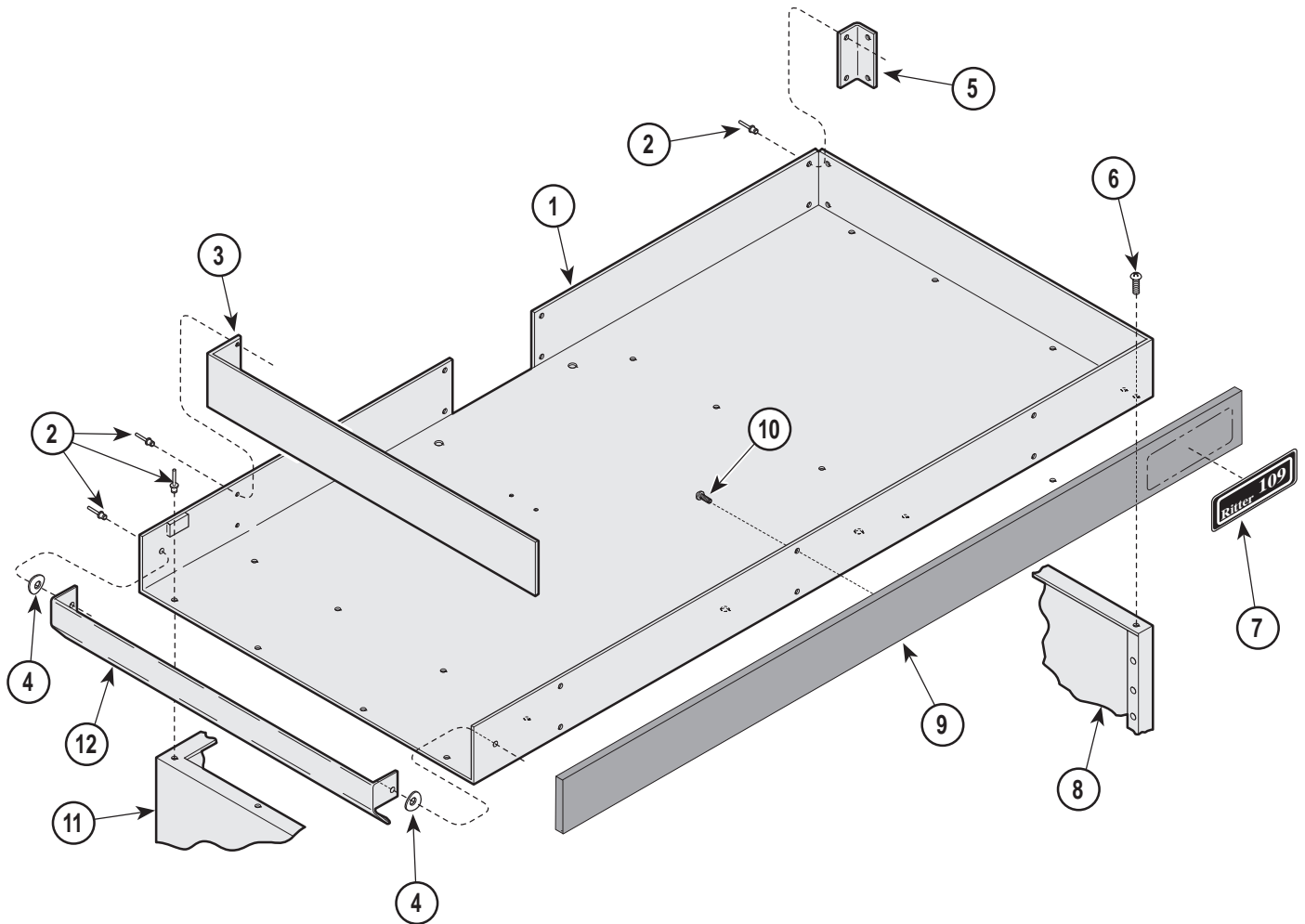
### Used on units with Serial Number CV-2539 thru Present

Item	Part No.	Description	Qty.	Item	Part No.	Description	Qty.
1	041-0010-02	Nut .....	1	7	042-0010-02	Pop Rivet.....	6
2	050-1760-20	Paper Roll Door .....	1	8		Cabinet (Refer to "Right Hand Cabinet Assembly" Elsewhere) .....	Ref
3	045-0001-12	Curved Washer .....	2	9		Cabinet (Refer to "Left Hand Cabinet Assembly" Elsewhere) .....	Ref
4	061-0237-07	109 Nameplate .....	1				
5	030-0907-20	Upper Wrap Weldment .....	1				
6	040-0010-00	Screw .....	8				

Always Specify Model & Serial Number

# Upper Wrap Assembly (Mechanical Scale)

## SECTION VI PARTS LIST



MA298600

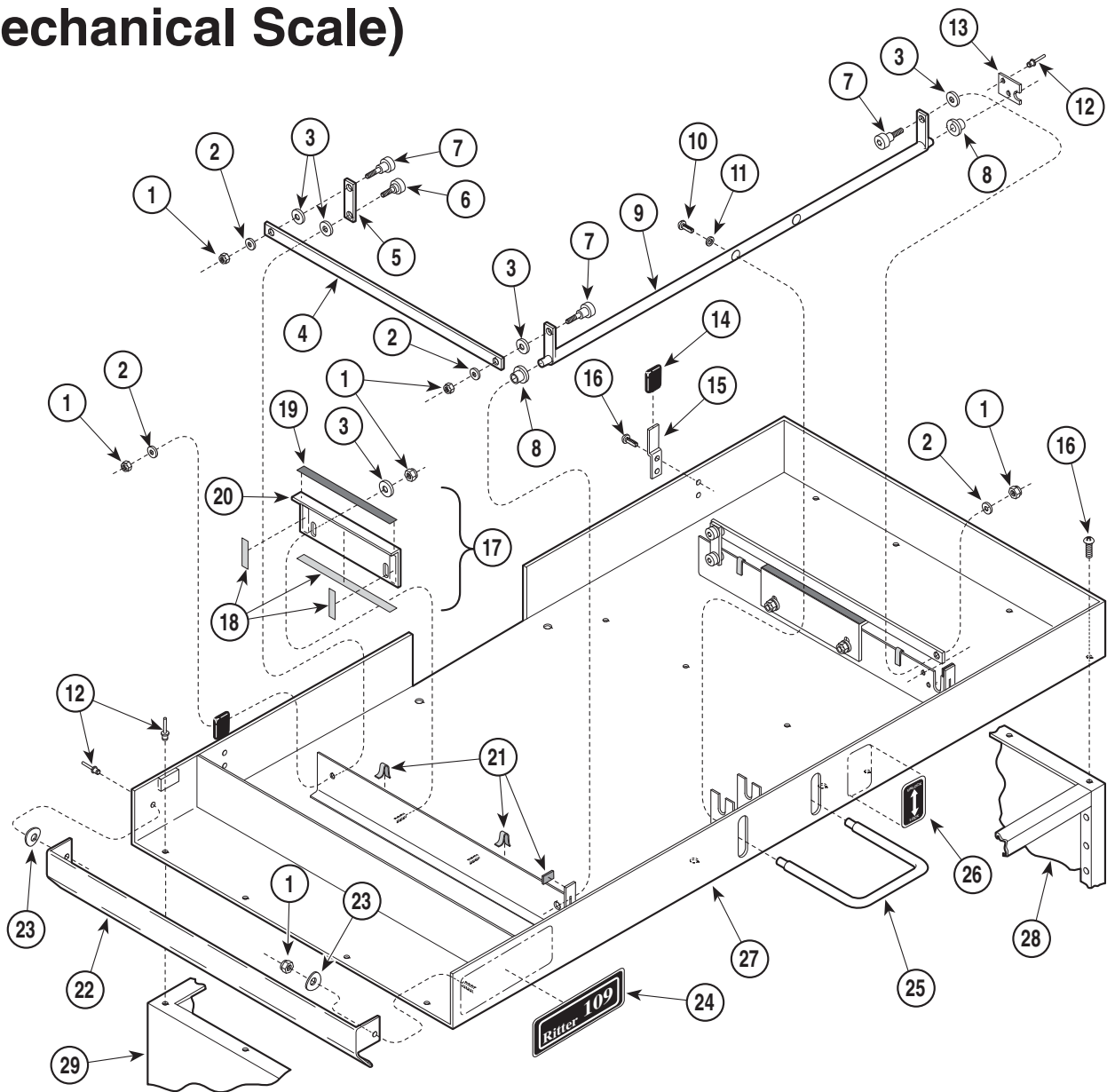
### Used on units with Serial Number AH-1000 thru Present

Item	Part No.	Description	Qty.	Item	Part No.	Description	Qty.
1	030-0980-00	Upper Wrap .....	1	8		Cabinet (Refer to "Right Hand Cabinet Assembly" Elsewhere) .....	Ref
2	042-0010-02	Pop Rivet .....	16	9	055-5500-XX	Front Panel (Specify Color) .....	1
3	030-0981-00	Paper Roll Stop .....	1	10	040-0006-00	Screw .....	6
4	045-0001-12	Curved Washer .....	2	11		Cabinet (Refer to "Left Hand Cabinet Assembly" Elsewhere) .....	Ref
5	050-0987-00	Corner .....	2	12	050-0982-00	Paper Roll Door .....	1
6	040-0010-00	Screw .....	8				
7	061-0215-06	109 Nameplate .....	1				

Always Specify Model & Serial Number

# Upper Wrap Assembly (Mechanical Scale)

## SECTION VI PARTS LIST



MA297100

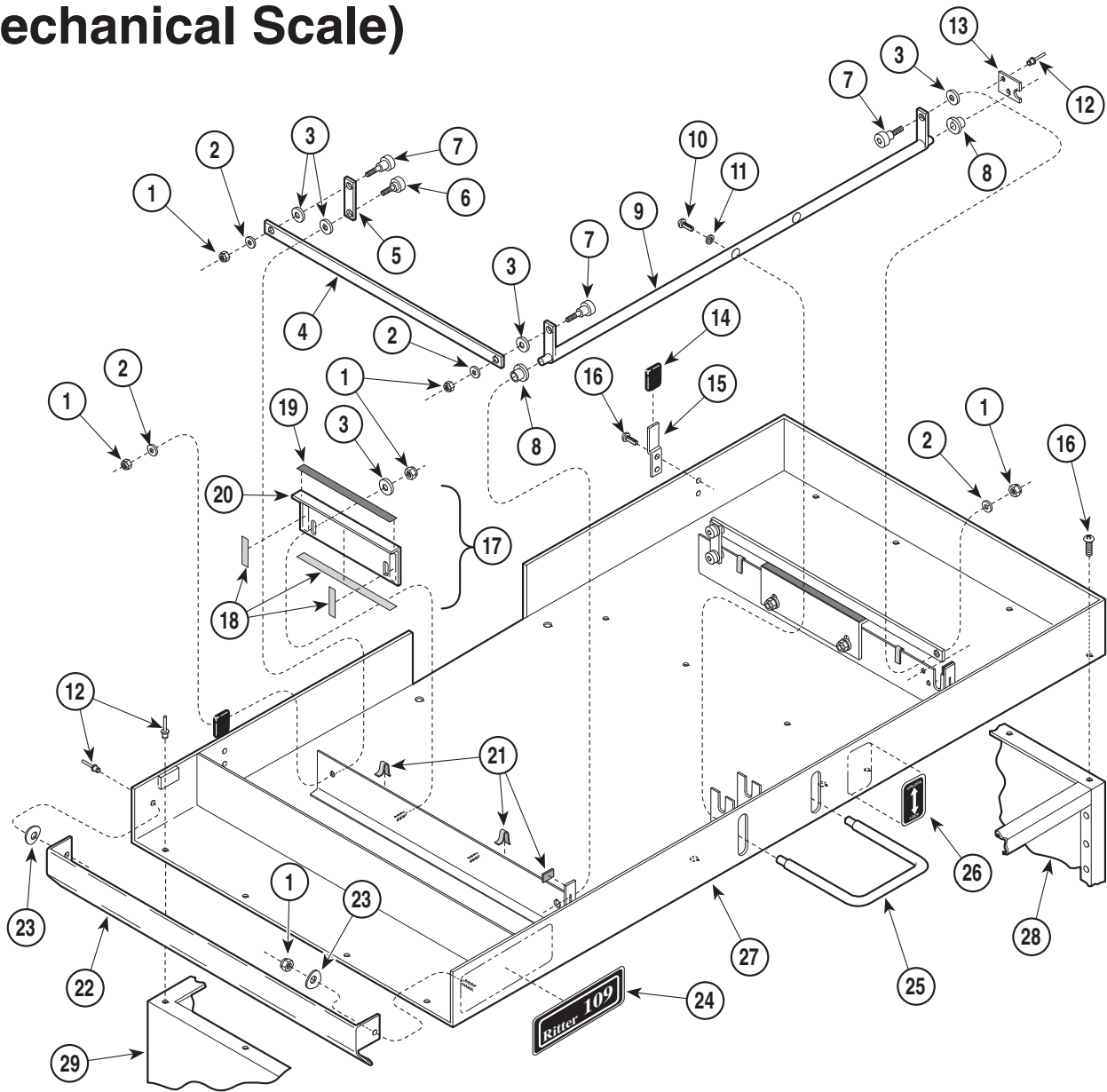
### Used on units with Serial Number CV-1000 thru CV-1873

Item	Part No.	Description	Qty.	Item	Part No.	Description	Qty.
1	041-0010-02	Nut .....	11	17	029-1269-00	Bracket Assembly (Includes Items 18 thru 20) .....	2
2	053-0382-00	Plastic Washer .....	6	18	• 053-0018-00	• Nylon Tape (Sold by the Inch) .....	14
3	053-0382-01	Plastic Washer .....	10	19	• S071-00010	• Neophrene (Sold by the Foot) .....	1
4	051-0630-00	Tie Bar .....	2	20	• 050-1759-00	• Lock Bracket .....	1
5	051-0627-00	Lever Bar .....	2	21	S071-00010	Neophrene (Sold by the Foot) .....	1
6	040-0010-85	Shoulder Screw .....	2	22	050-1760-20	Paper Roll Door .....	1
7	042-0014-21	Shoulder Screw .....	4	23	045-0001-12	Curved Washer .....	2
8	053-0114-00	Nylon Bearing .....	2	24	061-0237-07	109 Nameplate .....	1
9	030-0707-00	Pivot Rod Weldment .....	1	25	<del>051-0631-00</del>	Lock Handle .....	1
10	040-0010-50	Screw .....	2	26	061-0274-00	Lock/Unlock Label .....	1
11	045-0001-35	Washer .....	2	27	030-0706-20	Upper Wrap Weldment .....	1
12	042-0010-04	Pop Rivet .....	8	28		Cabinet (Refer to "Right Hand Cabinet Assembly" Elsewhere) .....	Ref
13	050-1768-00	Retaining Clip .....	1	29		Cabinet (Refer to "Left Hand Cabinet Assembly" Elsewhere) .....	Ref
14	053-0386-00	Vinyl Sleeve .....	2				
15	050-1761-20	Stop Bracket .....	2				
16	040-0010-00	Screw .....	12				

Always Specify Model & Serial Number

# Upper Wrap Assembly (Mechanical Scale)

## SECTION VI PARTS LIST



MA297100

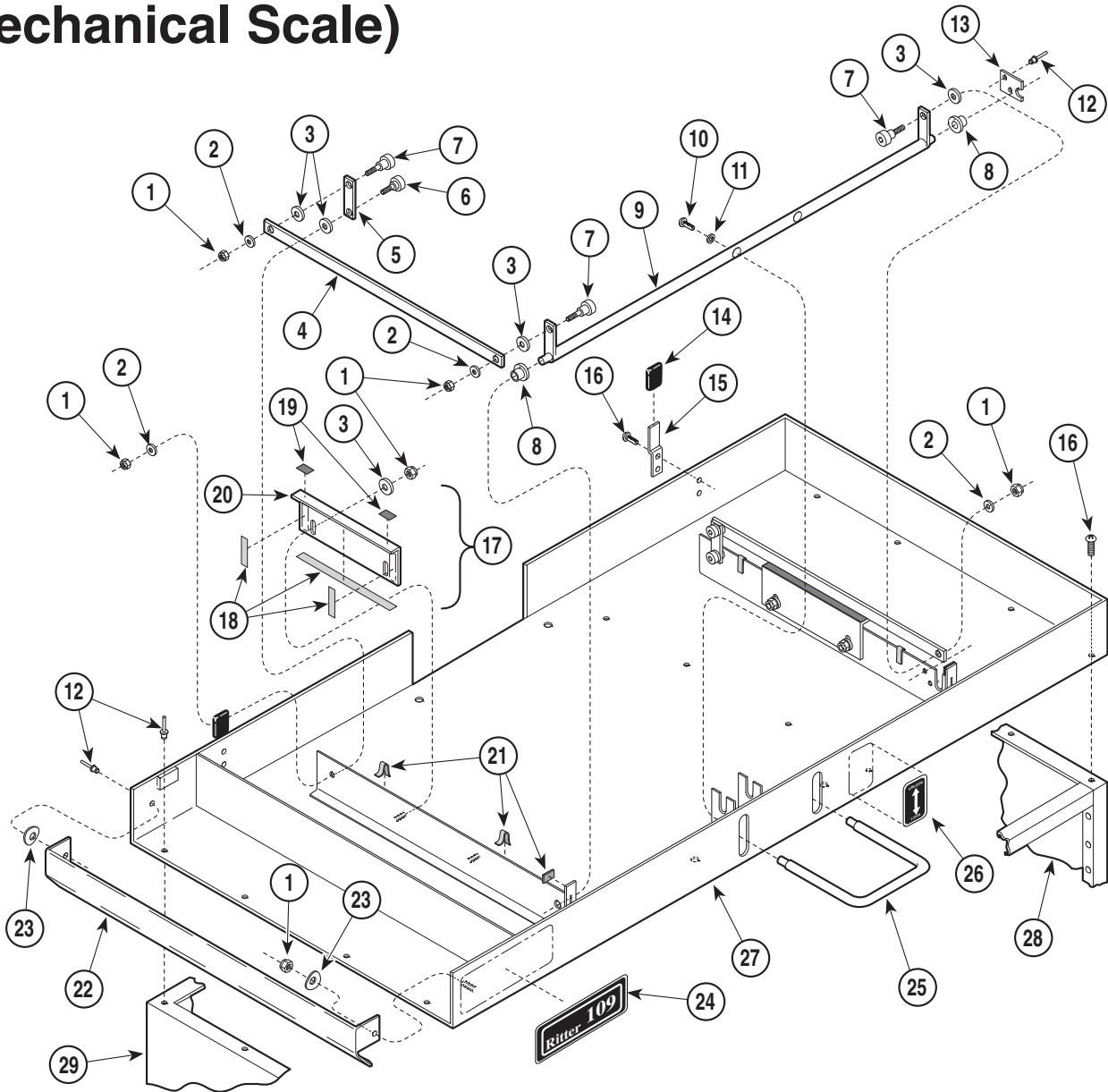
### Used on units with Serial Number CV-1873 thru CV-2538

Item	Part No.	Description	Qty.	Item	Part No.	Description	Qty.
1	041-0010-02	Nut .....	11	17	029-1269-00	Bracket Assembly (Includes Items 18 thru 20) .....	2
2	053-0382-00	Plastic Washer .....	6	18	• 053-0018-00	• Nylon Tape (Sold by the Inch) .....	14
3	053-0382-01	Plastic Washer .....	10	19	• S071-00010	• Neophrene (Sold by the Foot) .....	1
4	051-0630-00	Tie Bar .....	2	20	• 050-1759-00	• Lock Bracket .....	1
5	051-0627-00	Lever Bar .....	2	21	S071-00010	Neophrene (Sold by the Foot) .....	1
6	040-0010-85	Shoulder Screw .....	2	22	050-1760-20	Paper Roll Door .....	1
7	042-0014-21	Shoulder Screw .....	4	23	045-0001-12	Curved Washer .....	2
8	053-0114-00	Nylon Bearing .....	2	24	061-0237-07	109 Nameplate .....	1
9	030-0707-00	Pivot Rod Weldment .....	1	25	<del>051-0631-00</del>	Lock Handle .....	1
10	040-0010-50	Screw .....	2	26	061-0274-00	Lock/Unlock Label .....	1
11	045-0001-35	Washer .....	2	27	030-0815-20	Upper Wrap Weldment .....	1
12	042-0010-04	Pop Rivet .....	8	28		Cabinet (Refer to "Right Hand Cabinet Assembly" Elsewhere) .....	Ref
13	050-1768-00	Retaining Clip .....	1	29		Cabinet (Refer to "Left Hand Cabinet Assembly" Elsewhere) .....	Ref
14	053-0386-00	Vinyl Sleeve .....	2				
15	050-1761-20	Stop Bracket .....	2				
16	040-0010-00	Screw .....	12				

Always Specify Model & Serial Number

# Upper Wrap Assembly (Mechanical Scale)

## SECTION VI PARTS LIST



MA297100

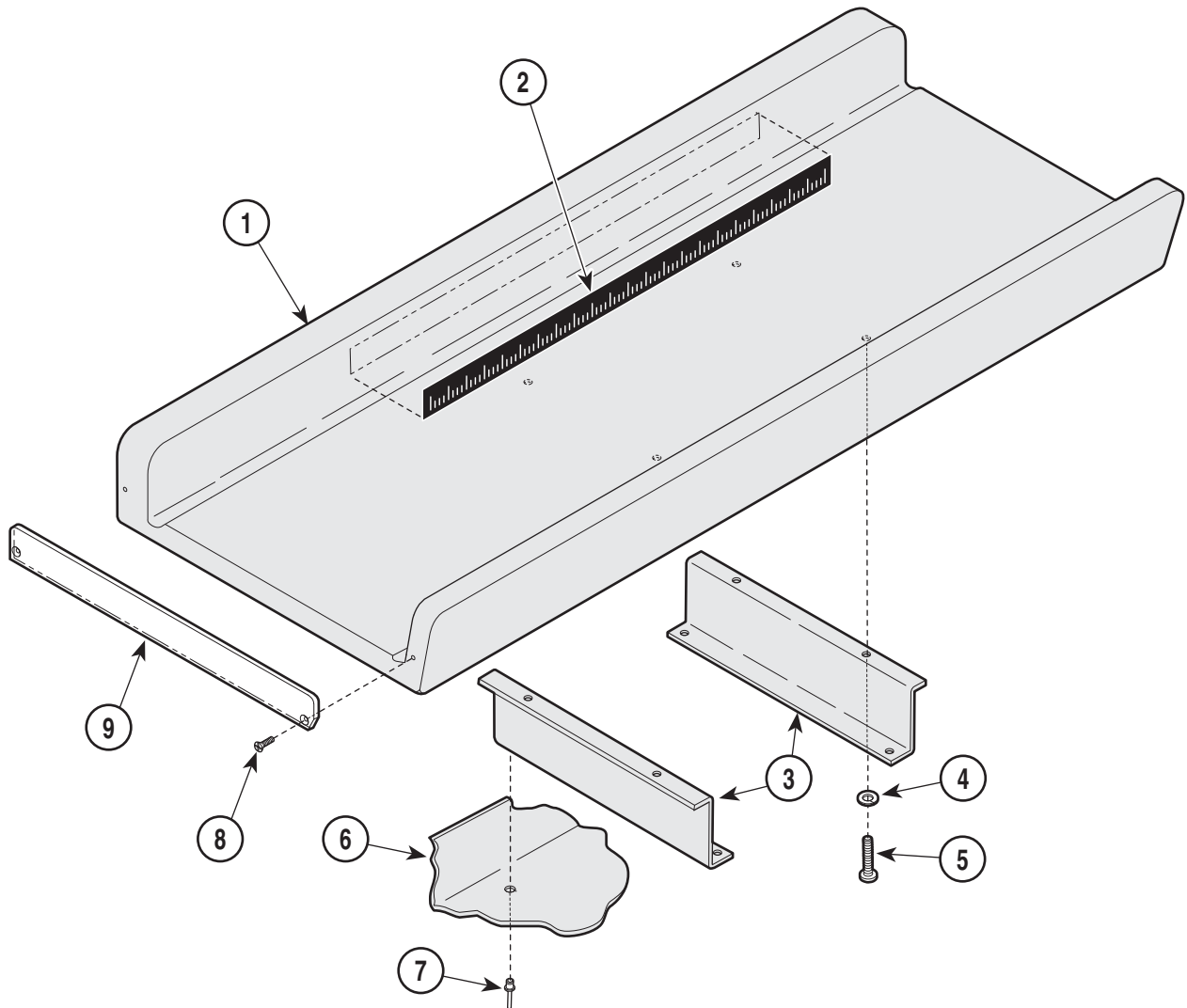
### Used on units with Serial Number CV-2539 thru Present

Item	Part No.	Description	Qty.	Item	Part No.	Description	Qty.
1	041-0010-02	Nut	11	17	029-1269-00	Bracket Assembly (Includes Items 18 thru 20)	2
2	053-0382-00	Plastic Washer	6	18	• 053-0018-00	• Nylon Tape (Sold by the Inch)	14
3	053-0382-01	Plastic Washer	10	19	• 053-0716-00	• Neophrene Bumper	2
4	051-0630-00	Tie Bar	2	20	• 050-1759-00	• Lock Bracket	1
5	051-0627-00	Lever Bar	2	21	S071-00010	Neophrene (Sold by the Foot)	1
6	040-0010-85	Shoulder Screw	2	22	050-1760-20	Paper Roll Door	1
7	042-0014-21	Shoulder Screw	4	23	045-0001-12	Curved Washer	2
8	053-0114-00	Nylon Bearing	2	24	061-0237-07	109 Nameplate	1
9	030-0707-00	Pivot Rod Weldment	1	25	051-0631-00	Lock Handle	1
10	040-0010-50	Screw	2	26	061-0274-00	Lock/Unlock Label	1
11	045-0001-35	Washer	2	27	030-0908-20	Upper Wrap Weldment	1
12	042-0010-04	Pop Rivet	8	28		Cabinet (Refer to "Right Hand Cabinet Assembly" Elsewhere)	Ref
13	050-1768-00	Retaining Clip	1	29		Cabinet (Refer to "Left Hand Cabinet Assembly" Elsewhere)	Ref
14	053-0386-00	Vinyl Sleeve	2				
15	050-1761-20	Stop Bracket	2				
16	040-0010-00	Screw	12				

Always Specify Model & Serial Number

# Table Top Assembly (No Scale)

## SECTION VI PARTS LIST



MA298700

### Used on units with Serial Number AH-1000 thru Present

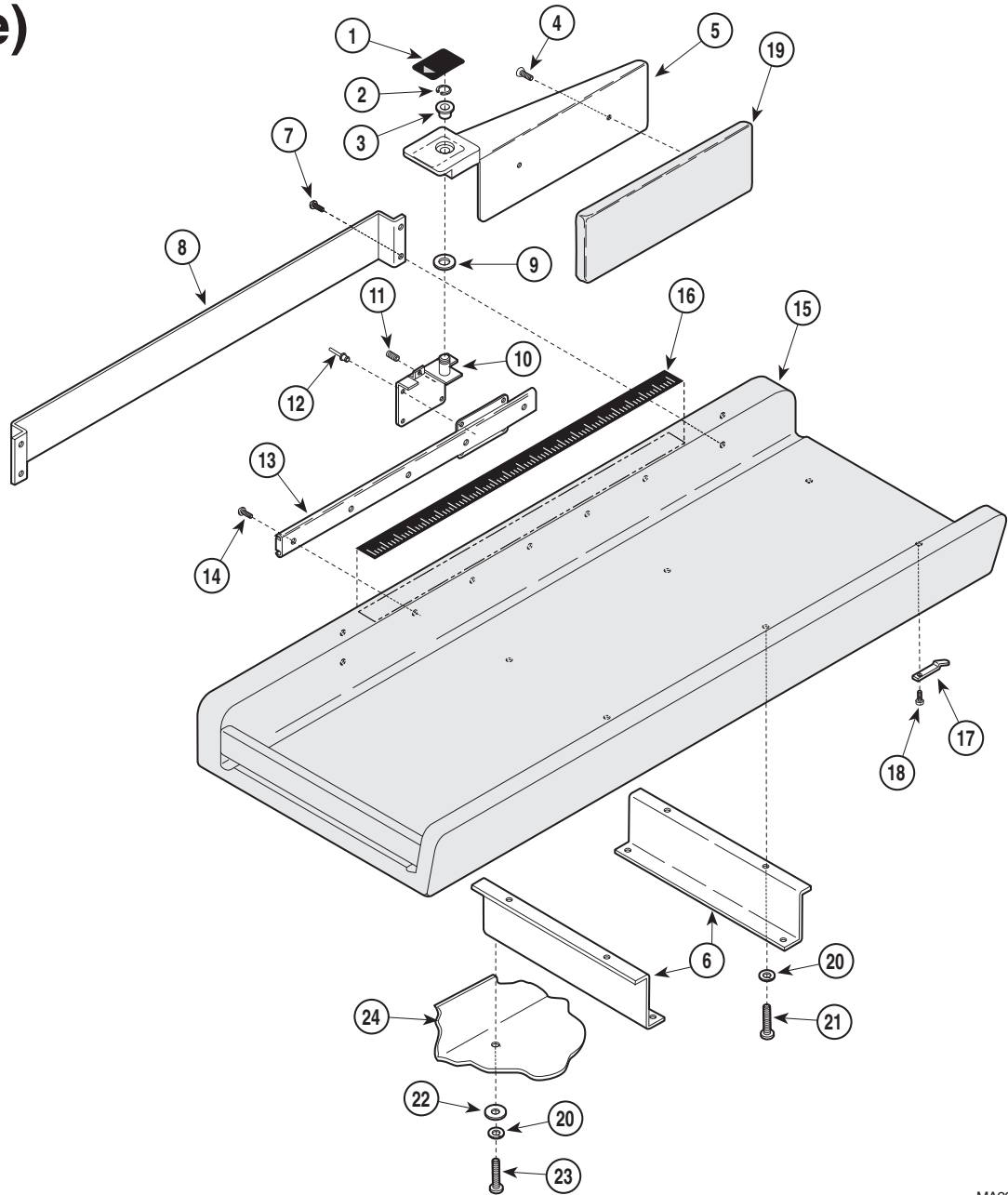
Item	Part No.	Description	Qty.	Item	Part No.	Description	Qty.
1	<del>028-0089-XX</del>	<del>Upholstered Table Top (*Specify Color) †</del>	1	6		Upper Wrap (Refer to "Upper Wrap Assembly" Elsewhere)	Ref
2	061-0138-00	Scale Length Label	1	7	042-0010-02	Pop Rivet	4
3	050-0983-00	Z- Bracket	2	8	040-0010-54	Screw	2
4	045-0001-01	Washer	4	9	053-0159-00	Paper Tear Strip	1
5	040-0250-03	Screw	4				

\* Click on the Color Selector link above to see available colors.

**Always Specify Model & Serial Number**

# Table Top Assembly (No Scale)

## SECTION VI PARTS LIST



MA297501

Used on units with Serial Number CV-1000 thru Present							
Item	Part No.	Description	Qty.	Item	Part No.	Description	Qty.
1	061-0275-00	Indicator Label .....	1	14	040-0008-46	Screw .....	5
2	042-0077-00	Retaining Ring .....	1	15	<del>002-0527-XX</del>	<del>Upholstered Table Top (Includes Items</del>	
3	016-0392-01	Flanged Bearing .....	1			<del>16 thru 19 [Specify Color*]) .....</del>	<del>1</del>
4	040-0010-56	Screw .....	2	16	•061-0273-00	• Scale Label .....	1
5	030-0988-00	Measuring Arm Weldment .....	1	17	•053-0001-03	• Bag Clip .....	2
6	030-0709-00	Support Bracket Weldment .....	2	18	•040-0006-00	• Screw .....	2
7	040-0010-48	Screw .....	4	19	•028-0263-XX	• Panel Assembly (Specify Color*) .....	1
8	050-1763-00	Slide Cover .....	1	20	045-0001-03	Lockwasher .....	8
9	053-0383-00	Pivot Washer .....	1	21	040-0250-28	Screw .....	4
10	030-0715-00	Pivot Bracket Weldment .....	1	22	045-0001-02	Washer .....	1
11	040-0010-63	Set Screw .....	1	23	040-0250-84	Screw .....	4
12	042-0010-02	Pop Rivet .....	4	24		Upper Wrap (Refer to "Upper Wrap	Ref
13	016-0398-00	Linear Motion Slide .....	1			Assembly" Elsewhere) .....	

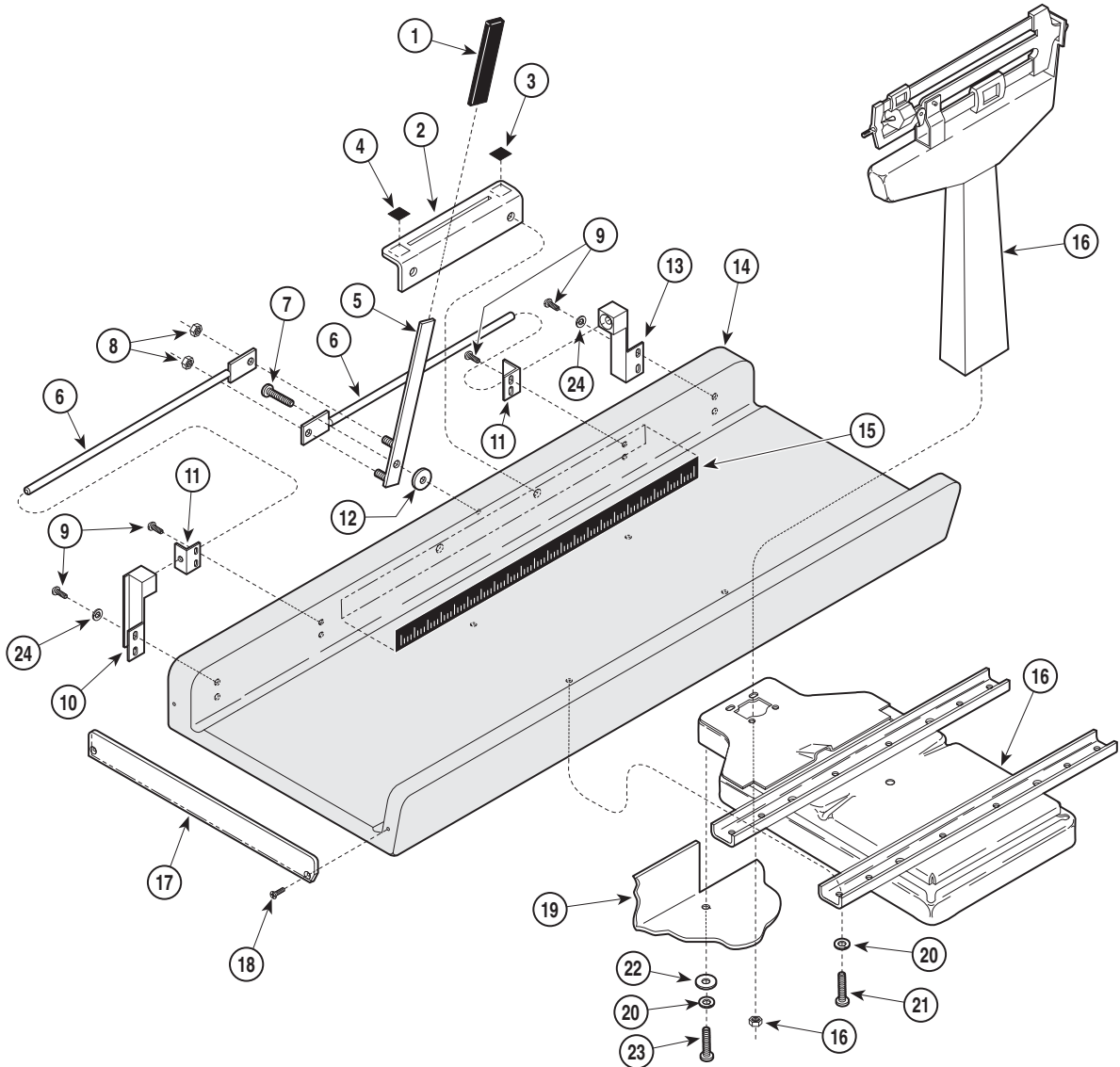
\* Click on the Color Selector link above to see available colors.

**Always Specify Model & Serial Number**



# Table Top Assembly (Mechanical Scale)

## SECTION VI PARTS LIST



MA298800

### Used on units with Serial Number AH-1000 thru Present

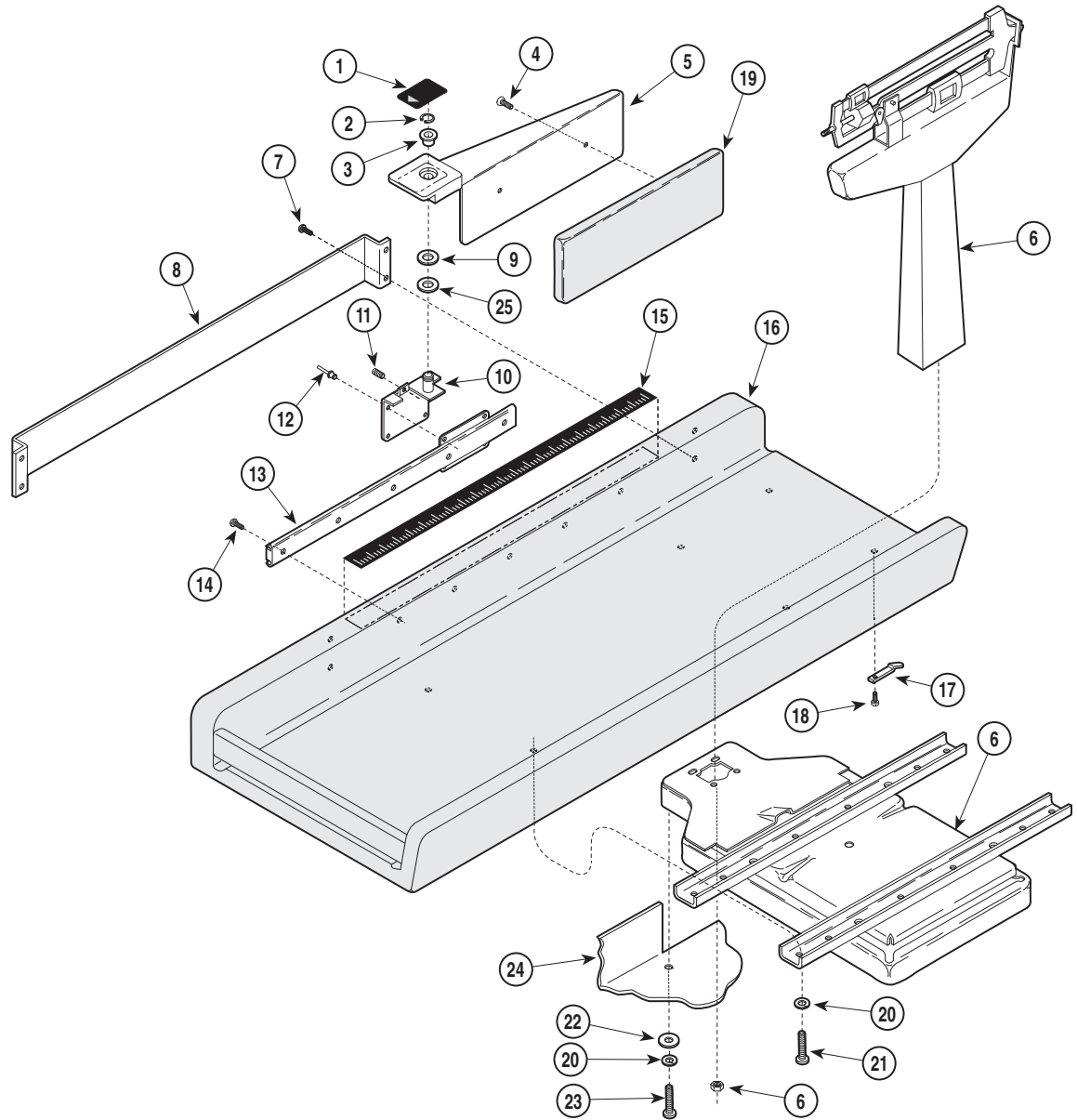
Item	Part No.	Description	Qty.	Item	Part No.	Description	Qty.
1	056-0255-00	Vinyl Sleeve .....	1	15	061-0138-00	Scale Length Label .....	1
2	050-1584-00	Lever Bracket .....	1	16	016-0188-00	Mechanical Scale - Complete (For individual parts ordering, contact Health o meter Technical Service @ 800-638-3722) .....	1
3	061-0139-01	Unlock Label .....	1	17	053-0159-00	Paper Tear Strip .....	1
4	061-0139-00	Lock Label .....	1	18	040-0010-54	Screw .....	2
5	030-0332-00	Lever Weldment .....	1	19		Upper Wrap (Refer to "Upper Wrap Assembly" Elsewhere) .....	Ref
6	030-0331-00	Plated Pivot Rod Weldment .....	2	20	045-0001-03	Lockwasher .....	8
7	040-0012-00	Screw .....	1	21	040-0250-114	Screw .....	4
8	041-0250-01	Nut .....	2	22	045-0001-02	Washer .....	1
9	040-0010-35	Screw .....	8	23	040-0250-84	Screw .....	4
10	030-0330-01	L. H. Latch Weldment .....	1	24	045-0001-18	Lockwasher .....	4
11	050-1265-00	Guide .....	2				
12	052-0078-00	Plated Spacer .....	1				
13	030-0330-00	R. H. Latch Weldment .....	1				
14	<del>028-0089-XX</del>	<del>Upholstered Table Top (Specify Color*)</del> 1					

\* Click on the Color Selector link above to see available colors.

Always Specify Model & Serial Number

# Table Top Assembly (Mechanical Scale)

## SECTION VI PARTS LIST



MA297400

### Used on units with Serial Number CV-1000 thru CV-1872

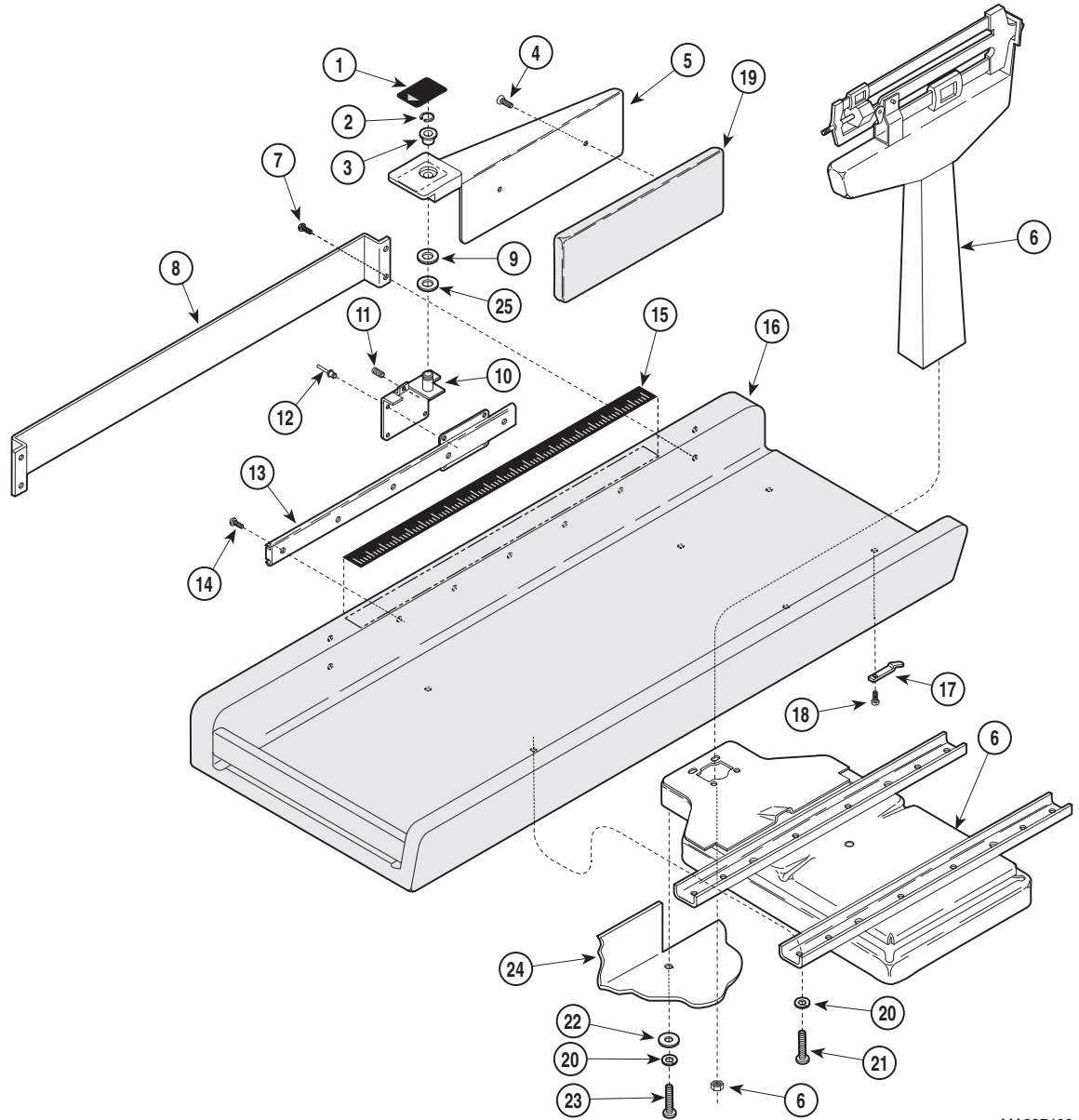
Item	Part No.	Description	Qty.	Item	Part No.	Description	Qty.
1	061-0275-00	Indicator Label .....	1	13	016-0398-00	Linear Motion Slide .....	1
2	042-0077-00	Retaining Ring .....	1	14	040-0008-46	Screw .....	5
3	016-0392-01	Flanged Bearing .....	1	15	061-0273-00	Scale Label .....	1
4	040-0010-56	Screw .....	2	16	<b>002-0527-XX</b>	<b>Upholstered Table Top (Includes Items 15 and 17 thru 19 [*Specify Color]) .....</b>	<b>1</b>
5	030-0988-00	Measuring Arm Weldment .....	1	17	• 053-0001-03	• Bag Clip .....	2
6	016-0399-00	Mechanical Scale - Complete (For individual parts ordering, contact Health o meter Technical Service @ 800-638-3722) .....	1	18	• 040-0006-00	• Screw .....	2
7	040-0010-48	Screw .....	4	19	• 028-0263-XX	• Panel Assembly (*Specify Color) .....	1
8	050-1763-00	Slide Cover .....	1	20	045-0001-03	Lockwasher .....	8
9	053-0383-00	Pivot Washer .....	1	21	040-0250-28	Screw .....	4
10	030-0715-00	Pivot Bracket Weldment .....	1	22	045-0001-02	Washer .....	1
11	040-0010-63	Set Screw .....	1	23	040-0250-84	Screw .....	4
12	042-0010-02	Pop Rivet .....	4	24		Upper Wrap (Refer to "Upper Wrap Assembly" Elsewhere) .....	Ref

\* Click on the Color Selector link above to see available colors.

**Always Specify Model & Serial Number**

# Table Top Assembly (Mechanical Scale)

## SECTION VI PARTS LIST



MA297400

### Used on units with Serial Number CV-1873 thru CV-4104

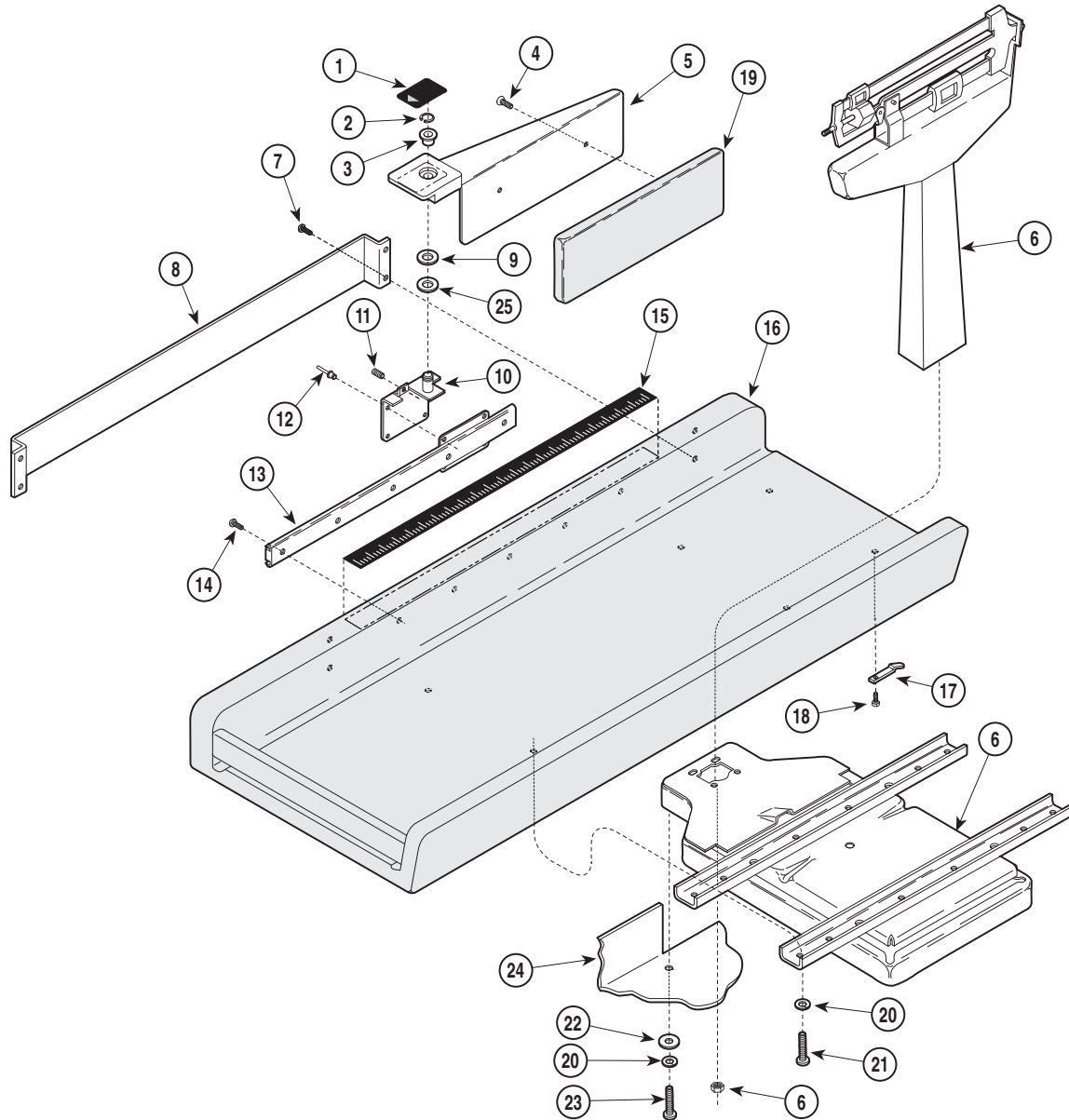
Item	Part No.	Description	Qty.	Item	Part No.	Description	Qty.
1	061-0275-00	Indicator Label .....	1	13	016-0398-00	Linear Motion Slide .....	1
2	042-0077-00	Retaining Ring .....	1	14	040-0008-46	Screw .....	5
3	016-0392-01	Flanged Bearing .....	1	15	061-0273-00	Scale Label .....	1
4	040-0010-56	Screw .....	2	16	<b>002-0527-XX</b>	<b>Upholstered Table Top (Includes Items 15 and 17 thru 19 [Specify Color*]) .....</b>	<b>1</b>
5	030-0988-00	Measuring Arm Weldment .....	1	17	• 053-0001-03	• Bag Clip .....	2
6	016-0466-00	Mechanical Scale - Complete (For individual parts ordering, contact Health o meter Technical Service @ 800-638-3722) .....	1	18	• 040-0006-00	• Screw .....	2
7	040-0010-48	Screw .....	4	19	• 028-0263-XX	• Panel Assembly (Specify Color*) .....	1
8	050-1763-00	Slide Cover .....	1	20	045-0001-03	Lockwasher .....	8
9	053-0383-00	Pivot Washer .....	1	21	040-0250-114	Screw .....	4
10	030-0715-00	Pivot Bracket Weldment .....	1	22	045-0001-02	Washer .....	1
11	040-0010-63	Set Screw .....	1	23	040-0250-84	Screw .....	4
12	042-0010-02	Pop Rivet .....	4	24		Upper Wrap (Refer to "Upper Wrap Assembly" Elsewhere) .....	Ref

\* Click on the Color Selector link above to see available colors.

**Always Specify Model & Serial Number**

# Table Top Assembly (Mechanical Scale)

## SECTION VI PARTS LIST



MA297400

### Used on units with Serial Number CV-4105 thru Present

Item	Part No.	Description	Qty.	Item	Part No.	Description	Qty.
1	061-0275-00	Indicator Label .....	1	14	040-0008-46	Screw .....	5
2	042-0077-00	Retaining Ring .....	1	15	061-0273-00	Scale Label .....	1
3	053-0114-03	Nylon Bearing .....	1	16	<del>002-0527-XX</del>	<b>Upholstered Table Top (Includes Items 15 and 17 thru 19 [Specify Color*]) .....</b>	<b>1</b>
4	040-0010-56	Screw .....	2	17	• 053-0001-03	• Bag Clip .....	2
5	030-1056-00	Measuring Arm Weldment .....	1	18	• 040-0006-00	• Screw .....	2
6	016-0466-00	Mechanical Scale - Complete (For individual parts ordering, contact Health o meter Technical Service @ 800-638-3722) .....	1	19	• 028-0263-XX	• Panel Assembly (Specify Color*) .....	1
7	040-0010-48	Screw .....	4	20	045-0001-03	Lockwasher .....	8
8	050-1763-00	Slide Cover .....	1	21	040-0250-114	Screw .....	4
9	053-0383-00	Pivot Washer .....	1	22	045-0001-02	Washer .....	1
10	030-0715-00	Pivot Bracket Weldment .....	1	23	040-0250-84	Screw .....	4
11	040-0010-63	Set Screw .....	1	24		Upper Wrap (Refer to "Upper Wrap Assembly" Elsewhere) .....	Ref
12	042-0010-02	Pop Rivet .....	4	25	045-0001-109	Washer .....	1
13	016-0398-00	Linear Motion Slide .....	1				

\* Click on the Color Selector link above to see available colors.

**Always Specify Model & Serial Number**

## COMMENTS

The Technical Publications Department of Midmark Corporation takes pride in its publications. We are sure that our manuals will fill all of your needs when you are performing scheduled maintenance, servicing, or repairs on a Midmark product.

However, if you find any errors or feel that there should be a change, addition, or deletion to a manual, please let us know!

**Page(s) and Paragraph(s) Needing Changed:**

**Description of Error or Desired Change:**

Please fax or mail a copy of this completed comment sheet to:

Midmark Corporation  
ATTN: Technical Publications Department  
60 Vista Drive  
Versailles, Ohio 45380  
Fax: (937) 526-5542





Midmark Corporation  
60 Vista Drive  
P.O. Box 286  
Versailles, Ohio 45380-0286  
937-526-3662  
Fax 937-526-5542  
midmark.com



Because we care.

Subject to change without notice.  
Refer to [www.Documark.com](http://www.Documark.com) for latest revision.