

102 -001
thru
-003

Ritter[®]
by MIDMARK

Medical
Examination
Table

Serial Number Prefix:
C & V

Service and Parts Manual

102 -001
thru
-003

**NO LONGER IN
PRODUCTION**
Some service parts may not
be available for this product!

FOR USE BY MIDMARK
TRAINED TECHNICIANS ONLY

TABLE OF CONTENTS

Section/Paragraph	Page	Section/Paragraph	Page
IMPORTANT INSTRUCTIONS		SECTION VI PARTS LIST	
General Safety Instructions	ii	6.1 Introduction	6-1
Safety Alert Symbols	ii	6.2 Description of Columns	6-1
Warranty Instructions	ii	Base And Cabinet Assembly	6-2
SECTION I GENERAL INFORMATION		Upper Wrap Assembly	6-3
Not Available		Seat & Headboard Upholstery Assembly	6-4
SECTION II TESTING AND TROUBLESHOOTING		Foot Rest Assembly	6-5.*
Not Available		Step Assembly	6-6
SECTION III SCHEDULED MAINTENANCE		Drawer Assembly	6-7
Not Available		Stirrup Assembly	6-8
SECTION IV MAINTENANCE/SERVICE		Wiring Diagram (Standard)	6-9
INSTRUCTIONS		Wiring Diagram (Units w/Heaters)	6-10
Not Available		Pelvic Tilt Assembly	6-11
SECTION V SCHEMATICS AND DIAGRAMS		COMMENTS	7-1
Not Available		FAX ORDERING FORM	7-2

(*) Indicates that there has been a serial number break for the illustration and that there are additional point page(s) following the original page.

IMPORTANT INSTRUCTIONS

General Safety Instructions

Safety First: The primary concern of Midmark Corporation is that this table is maintained with the safety of the patient and staff in mind. To assure that services and repairs are completed safely and correctly, proceed as follows:

- (1) Read this entire manual before performing any services or repairs on this table.
- (2) Be sure you understand the instructions contained in this manual before attempting to service or repair this table.

Safety Alert Symbols

Throughout this manual are safety alert symbols that call attention to particular procedures. These items are used as follows:



DANGER

A DANGER is used for an imminently hazardous operating procedure, practice, or condition which, if not correctly followed, will result in loss of life or serious personal injury.



WARNING

A WARNING is used for a potentially hazardous operating procedure, practice, or condition which, if not correctly followed, could result in loss of life or serious personal injury.



CAUTION

A CAUTION is used for a potentially hazardous operating procedure, practice, or condition which, if not correctly followed, could result in minor or moderate injury. It may also be used to alert against unsafe practices.



EQUIPMENT ALERT

An EQUIPMENT ALERT is used for an imminently or potentially hazardous operating procedure, practice, or condition which, if not correctly followed, will or could result in serious, moderate, or minor damage to unit.

NOTE

A NOTE is used to amplify an operating procedure, practice or condition.

Warranty Instructions

Refer to the Midmark "Limited Warranty" printed in the Installation and Operation Manual for warranty information. Failure to follow the guidelines listed below will void the warranty and/or render the 102 Medical Examination Table unsafe for operation.

- In the event of a malfunction, do not attempt to operate the table until necessary repairs have been made.
- Do not attempt to disassemble table, replace malfunctioning or damaged components, or perform adjustments unless you are one of Midmark's authorized service technicians.
- Do not substitute parts of another manufacturer when replacing inoperative or damaged components. Use only Midmark replacement parts.

SECTION VI PARTS LIST

6.1 Introduction

The illustrated parts list provides information for identifying and ordering the parts necessary to maintain the unit in peak operating condition. Refer to paragraph 1.5 for parts ordering information.

The parts list also illustrates disassembly and assembly relationships of parts.

6.2 Description of Columns

The *Item* column of the parts list gives a component its own unique number. The same number is given to the component in the parts illustration. This allows a part number of a component to be found if the technician can visually spot the part on the illustration. The technician simply finds the component in question on the illustration and notes the item number of that component. Then, he finds that item number in the parts list. The row corresponding to the item number gives the technician the part number, a description of the component, and quantity of parts per subassembly. Also, if a part number is known, the location of that component can be determined by looking for the item number of the component on the illustration.

The *Part No.* column lists the MIDMARK part number for that component.

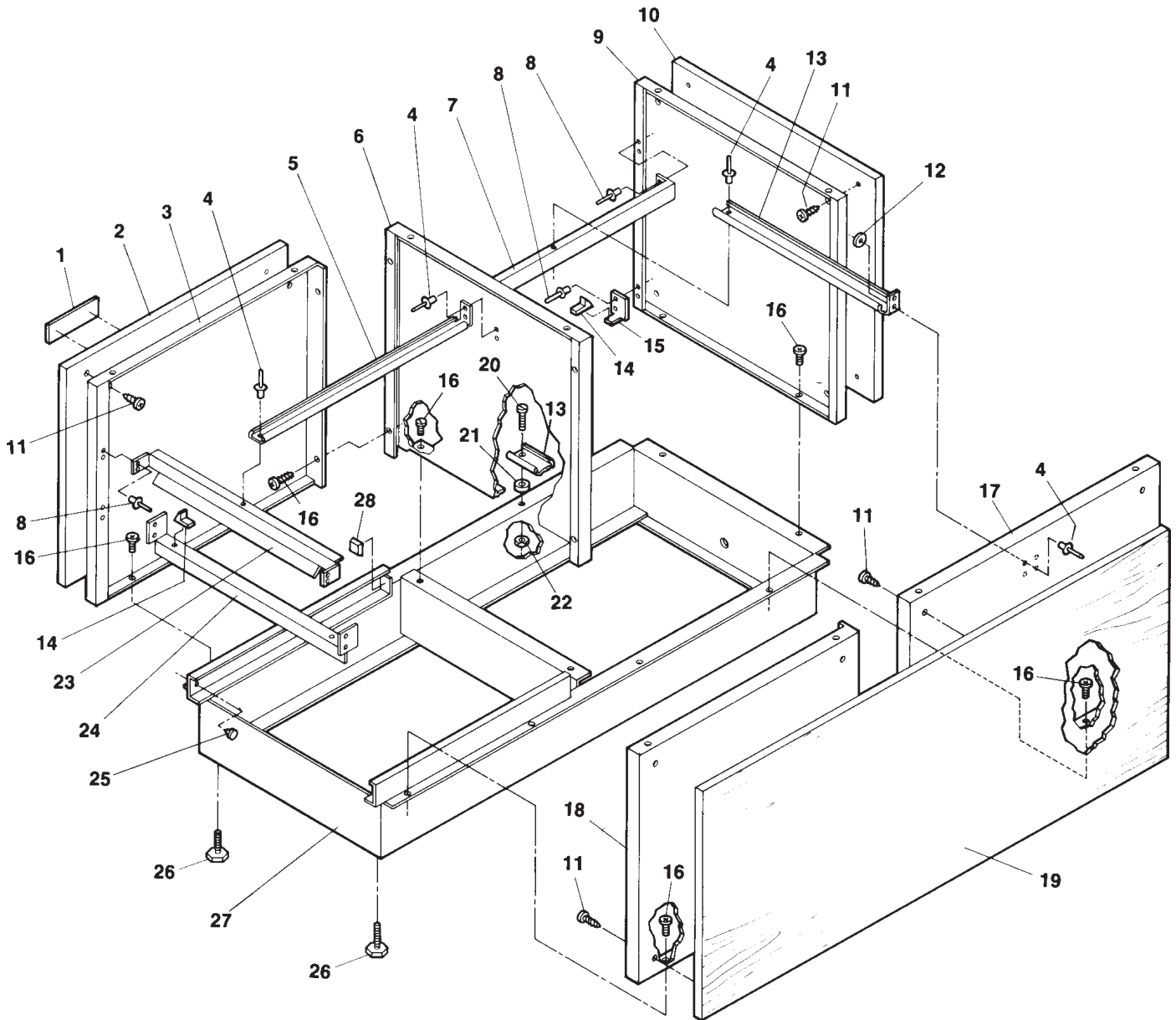
The *Description* column provides a physical description of the component.

The *Qty.* column lists the number of units of a particular component that is required for the subassembly. The letters "AR" denote "as required" when quantities of a particular component cannot be determined, such as: adhesive.

Bullets { • } in the *Part No.* column and the *Description* column show the indenture level of a component. If a component does not have a bullet, it is a main component of that illustration. If a component has a bullet, it is a subcomponent of the next component listed higher in the parts list than itself that does not have a bullet. Likewise, if a component has two bullets, it is a subcomponent of the next component listed higher in the parts list than itself that has only one bullet.

Base and Cabinet Assembly

SECTION VI PARTS LIST



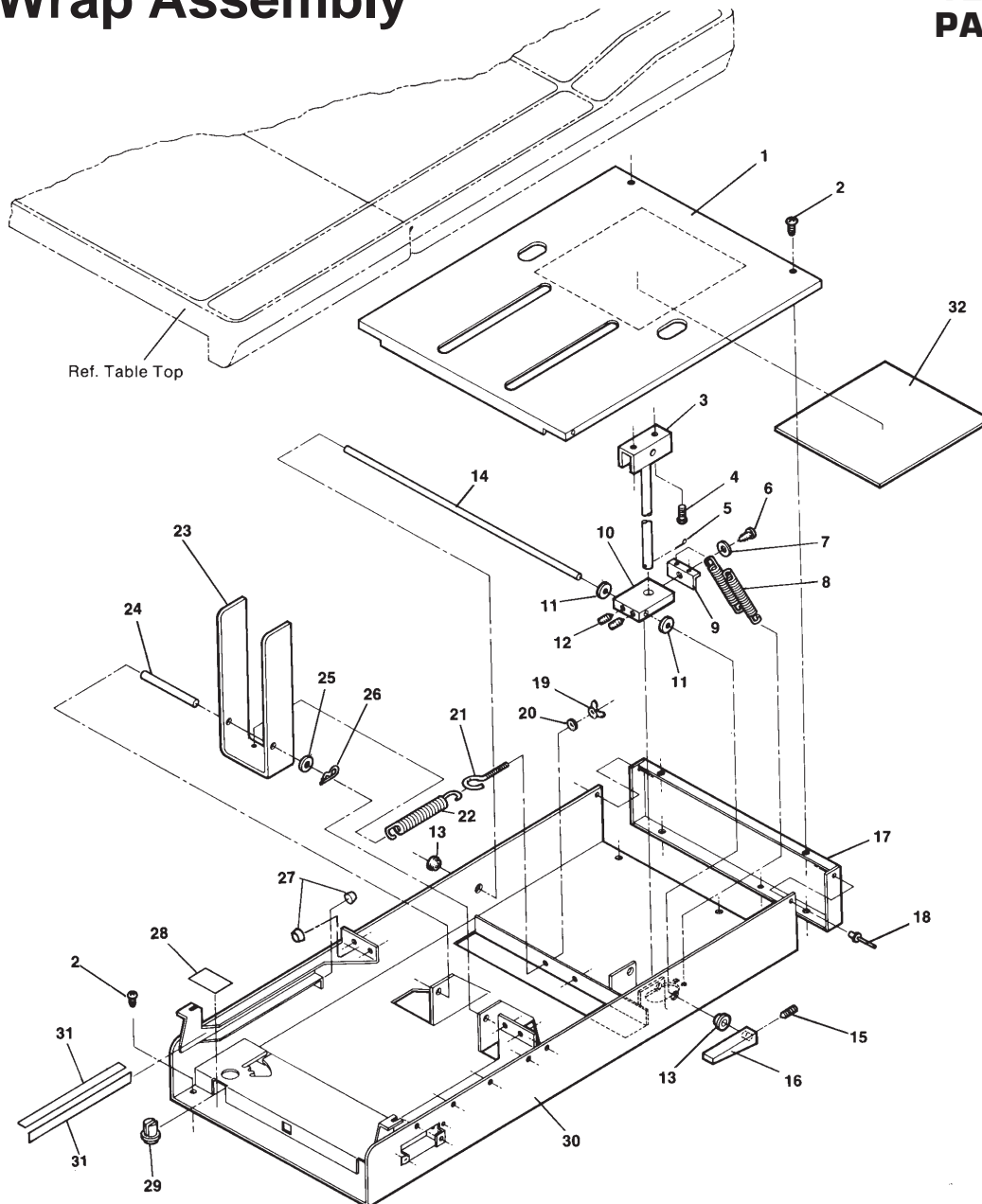
MA2646

Item	Part No.	Description	Qty.	Item	Part No.	Description	Qty.
1	061-0061-07	Nameplate 102	1	16	040-0010-00	Screw	38
2	055-4000-01	Table Side Small	1	17	050-0185-01	Back	1
3	050-0183-03	Front Support R.H.	1	18	050-0183-04	Front Support L.H.	1
4	042-0010-03	Pop Rivet	16	19	055-3900-01	Table Side Large	1
5	016-0136-00	Outer Slide (See Drawer Parts List)	2	20	040-0008-10	Screw	1
6	050-0606-02	Center Support	1	21	052-0045-00	Spacer	1
7	050-0959-00	Mullion	2	22	041-0008-02	Nut	2
8	042-0010-01	Pop Rivet	14	23	050-0916-00	Mullion	1
9	050-0187-02	End Panel R.H.	1	24	050-0824-00	Mullion	1
10	055-4100-01	Table End	1	25	053-0001-00	Nylon Stem Bumper	2
11	040-0010-42	Screw	16	26	016-0001-00	Leveling Screw	4
12	045-0001-39	Washer	3	27	029-0302-00	Base Assembly	1
13	016-0135-00	Outer Slide (See Drawer Parts List)	3	28	053-0014-00	Self Sticking Bumper	2
14	053-0004-00	Glide	10				
15	050-0587-00	Bracket Drawer	1				

Always Specify Model & Serial Number

Upper Wrap Assembly

SECTION VI PARTS LIST



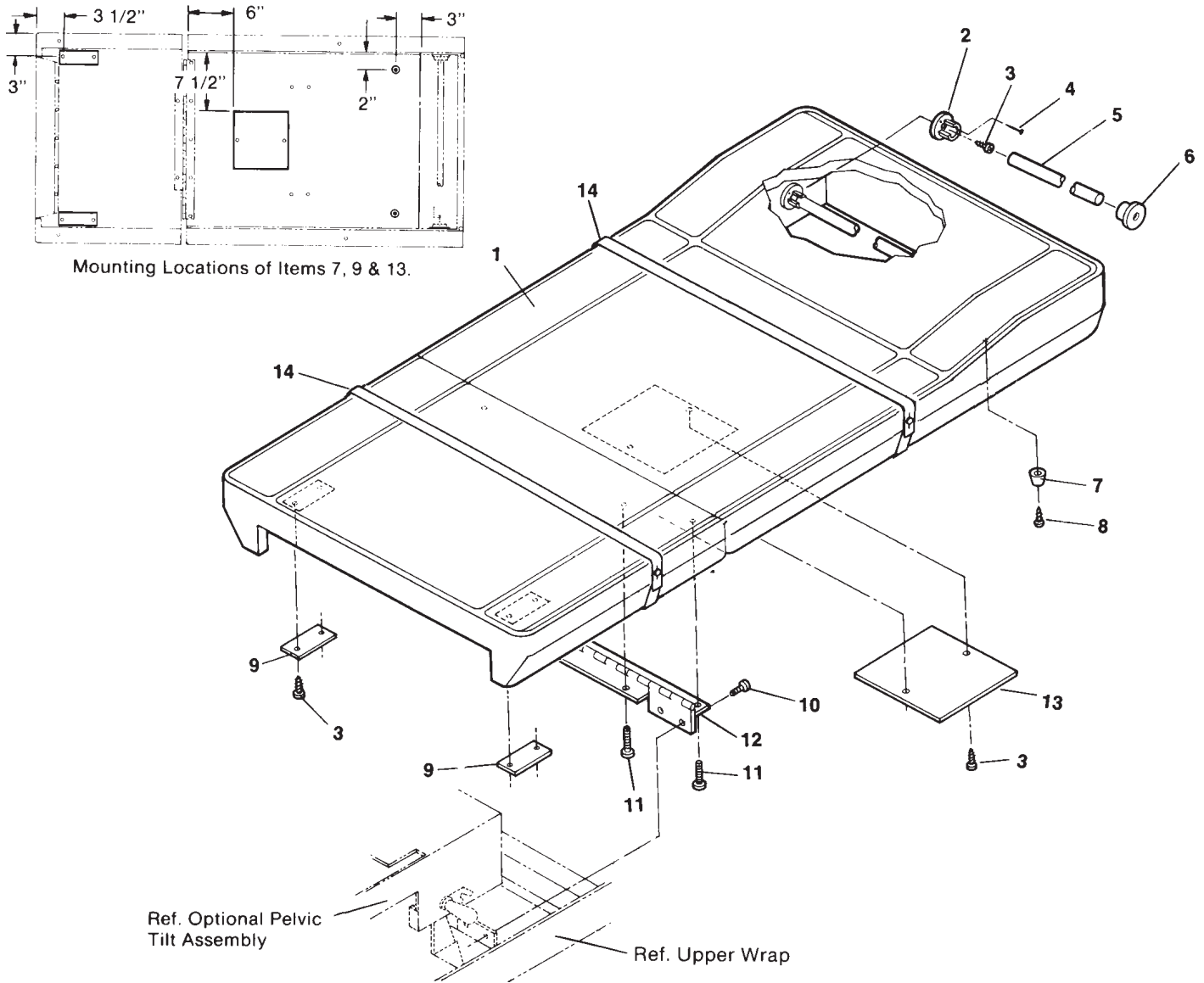
MA2647

Item	Part No.	Description	Qty.	Item	Part No.	Description	Qty.
1	029-0305-00	Top Cover Assembly (Incl. Item 32)	1	17	050-0180-00	End Cap	1
	* 050-0557-00	Top Cover (Less Sound Damp)	1	18	042-0010-03	Pop Rivet	2
2	040-0010-00	Screw	52	19	041-0250-05	Wing Nut	2
3	029-0151-00	Back Support Rod Assembly	1	20	045-0001-02	Flat Washer	2
4	040-0010-01	Screw	2	21	016-0008-00	Eye Bolt	2
5	042-0003-00	Cotter Pin	1	22	025-0003-00	Lift Spring	2
6	040-0010-03	Screw	1	23	051-0132-00	Lift Lever	1
7	045-0001-04	Lockwasher	1	24	057-0004-00	Lift Support Rod	1
8	025-0008-00	Backlock Spring	2	25	045-0001-01	Flat Washer	4
9	050-0101-00	Backlock Spring Retainer	1	26	042-0004-00	Hitch Pin	2
10	051-0002-00	Backlock	1	27	053-0014-00	Self Sticking Bumper	2
11	045-0001-01	Flat Washer	2	28	061-0004-00	Stirrup Instruction Tag	1
12	040-0250-00	Set Screw	2	29	053-0082-00	Pivot Boss	2
13	053-0068-01	Snap Bushing	3	30	030-0179-00	R.H. Upper Wrap	1
14	057-0003-00	Back Lock Rod	1		* 030-0179-02	R.H. Upper Wrap (Designed for Heater)	1
15	040-0250-05	Set Screw	2	31	053-0018-00	Nylon Tape	1
16	021-0001-01	Back Lock Lever	2	32	054-0067-00	Sound Damp	1

Always Specify Model & Serial Number

Seat & Headboard Upholstery Assembly

SECTION VI PARTS LIST



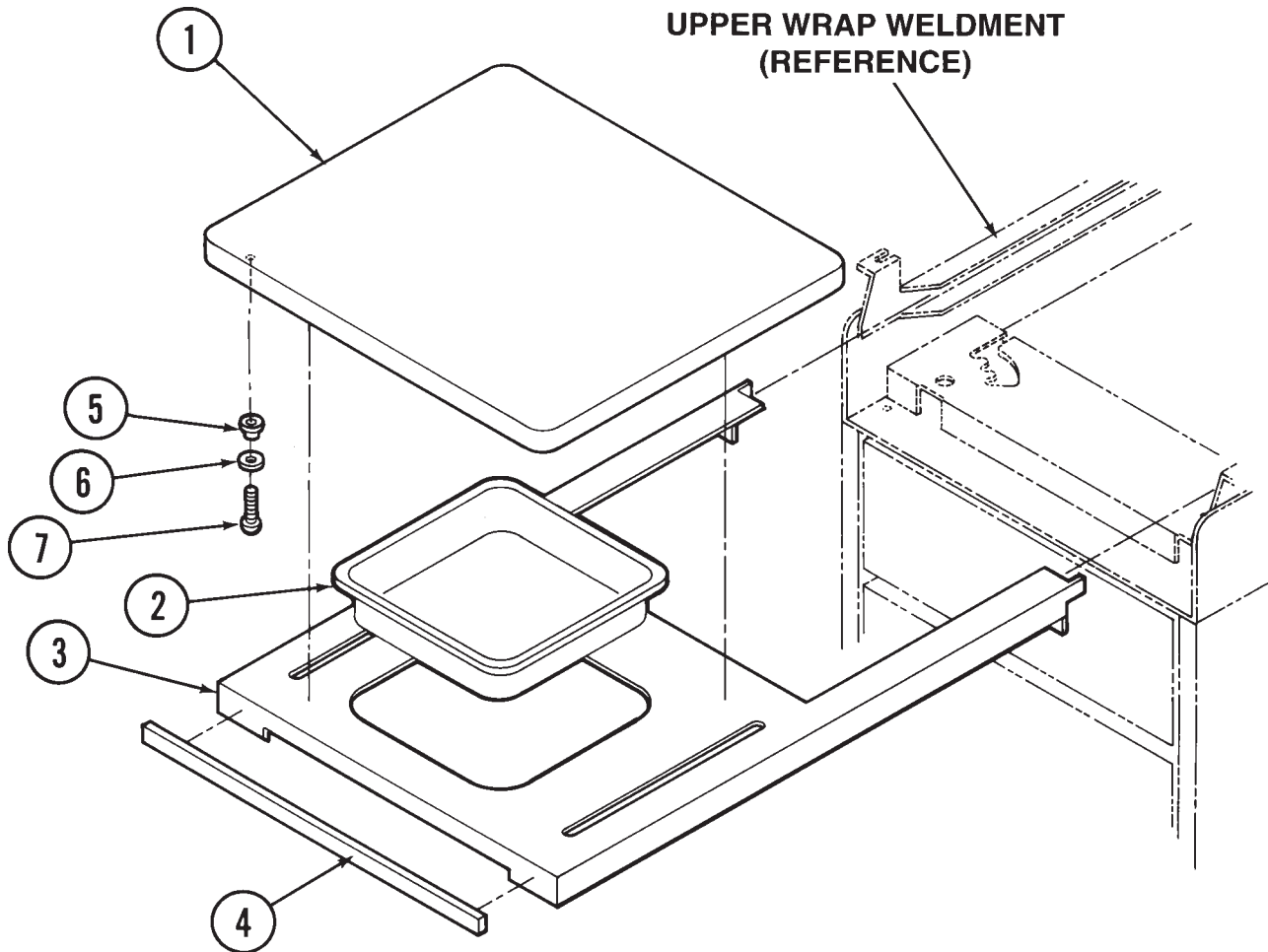
MA2648

Item	Part No.	Description	Qty.	Item	Part No.	Description	Qty.
1	002-0138-00	Upholstered Table Top	1	8	040-0008-00	Screw	2
2	053-0043-02	L.H. Plastic Pole Socket	1	9	050-0194-00	Scuff Plate	2
3	040-0006-26	Screw	6	10	040-0010-35	Screw	4
4	042-0605-00	Wire Nail	1	11	040-0010-01	Screw	7
5	055-0005-00	Wood Dowel	1	12	016-0009-01	Top Hinge	1
6	053-0043-01	R.H. Plastic Pole Socket	1	13	050-0194-00	Plate	1
7	053-0024-00	Recess Bumper	1	14	002-0049-00	Paper Tear Strip Assembly	2

Always Specify Model & Serial Number

Foot Rest Assembly

SECTION VI PARTS LIST



MA2203-01

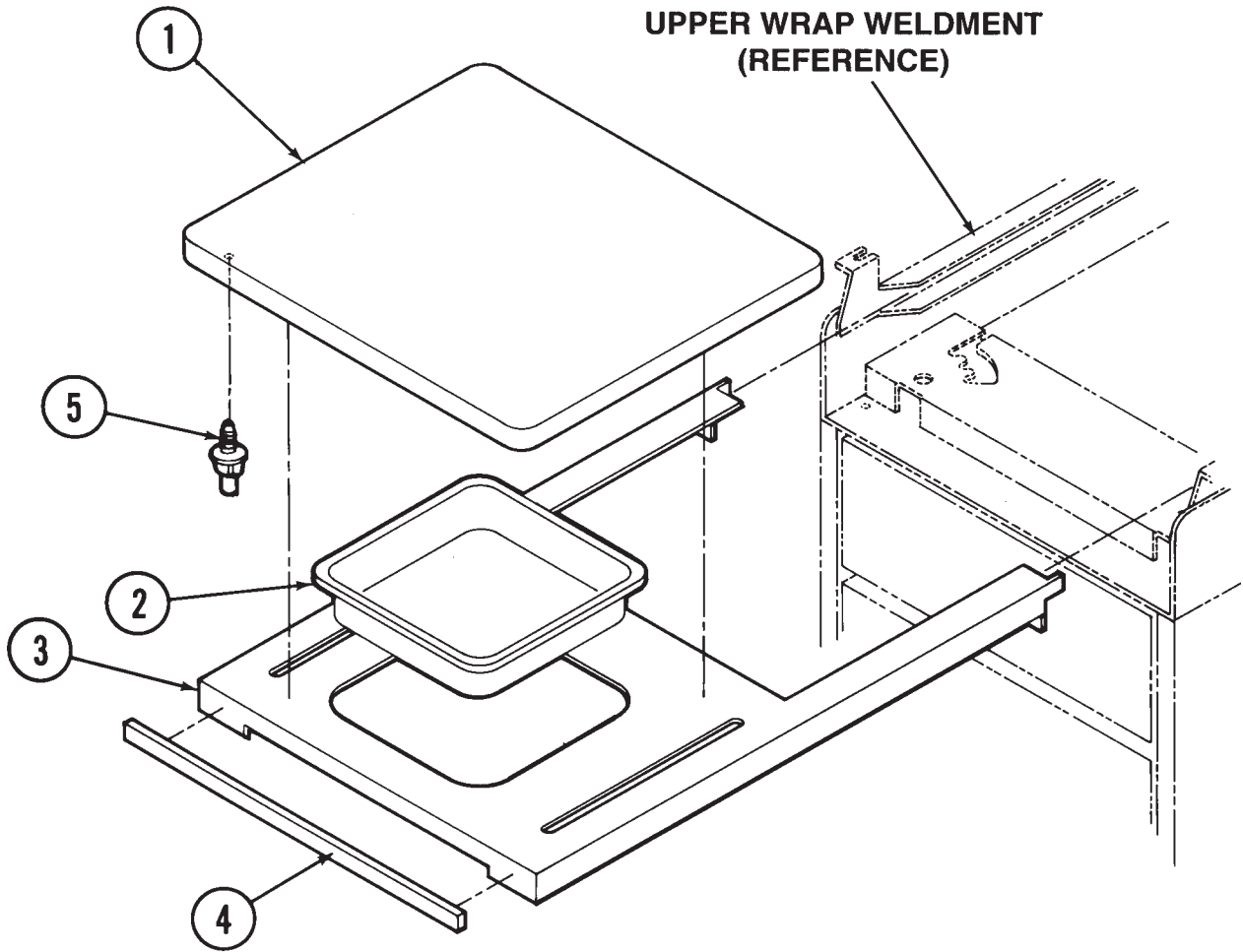
Used on units with Serial Number C1000 thru C4461

Item	Part No.	Description	Qty.	Item	Part No.	Description	Qty.
1	002-0283-00	Upholstery Footrest Pad (Includes items 2, 3, and 4)	1	4	029-0159-00	Footrest Shelf Trim Assembly	1
2	053-0029-00	Treatment Pan	1	5	053-0011-00	Nylon Bushing	4
3	030-0181-00	Footrest	1	6	053-0021-00	Rubber Washer	4
				7	040-0250-02	Screw	4

Always Specify Model & Serial Number

Foot Rest Assembly

SECTION VI PARTS LIST



MA2204

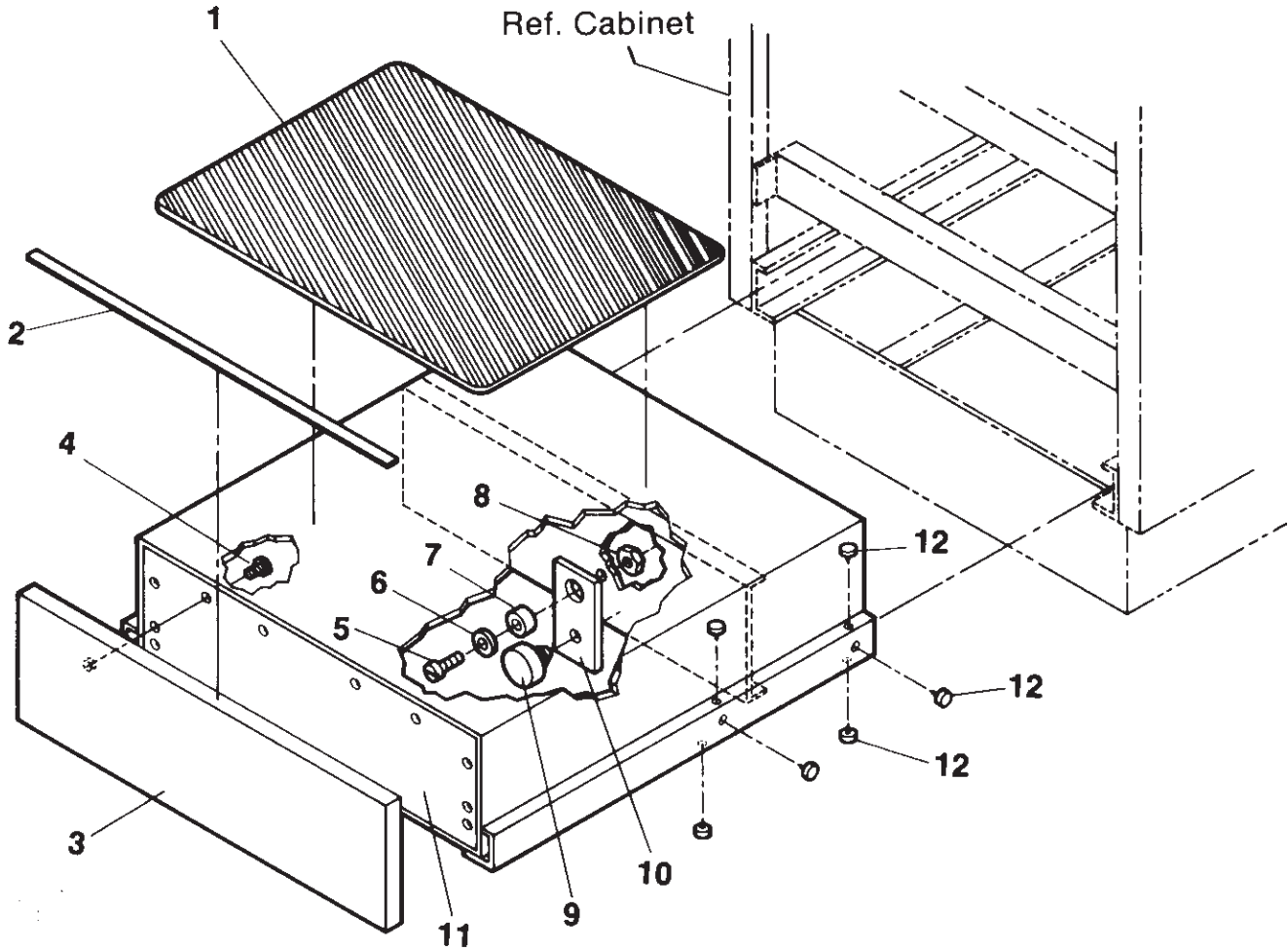
Used on units with Serial Number C4461 thru Present

Item	Part No.	Description	Qty.	Item	Part No.	Description	Qty.
1	002-0283-00	Upholstery Footrest Pad (Includes items 1 and 2)	1	3	030-0670-00	Footrest	1
2	053-0220-00	Treatment Pan	1	4	029-0159-00	Footrest Shelf Trim Assembly	1
				5	053-0365-00	Footrest Glide	4

Always Specify Model & Serial Number

Step Assembly

SECTION VI PARTS LIST



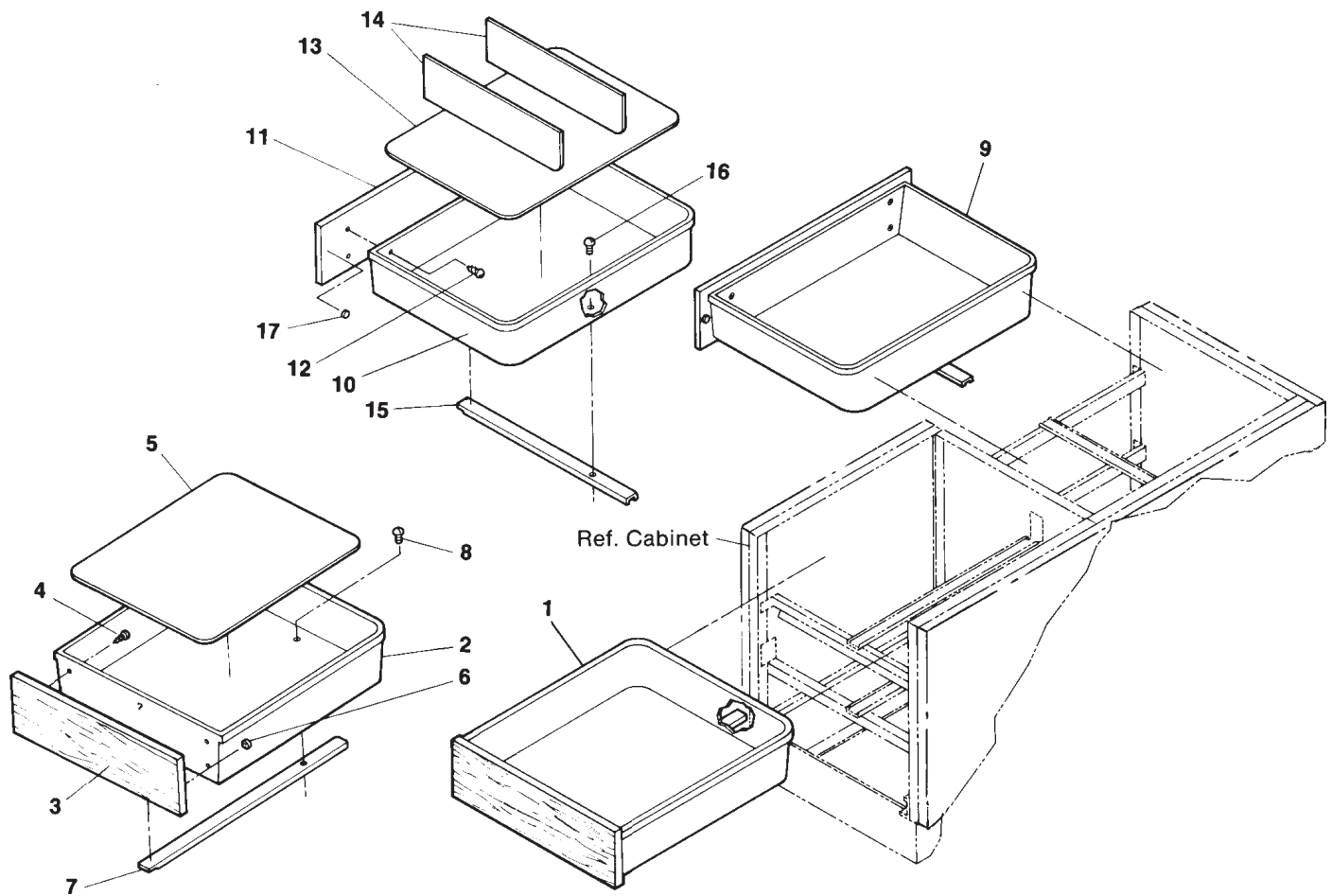
MA2650

Item	Part No.	Description	Qty.	Item	Part No.	Description	Qty.
	029-0162-00	Step Assembly (Includes Items 1 thru 12)	1	4	040-0006-00	Screw	10
1	053-0048-00	Step Cover	1	5	040-0008-06	Screw	1
2	050-0379-00	Step Guard - 17.75" (Used only on Units with Square Step Fronts)	1	6	045-0001-39	Flat Washer	1
	050-2057-00	Step Guard - 17" (Used only on Units with Round Step Fronts)	1	7	016-0138-09	Spacer	1
3	055-1200-02	Step Front (Square Corners)	1	8	041-0008-02	Nut, Nylock	1
	055-1200-04	Step Front (Round Corners)	1	9	053-0323-00	Button Bumper	1
				10	051-0529-00	Bar-Step Stop	1
				11	030-0587-00	Step Weldment	1
				12	053-0001-00	Nylon Stem Bumper	12

Always Specify Model & Serial Number

Drawer Assembly

SECTION VI PARTS LIST



MA2651

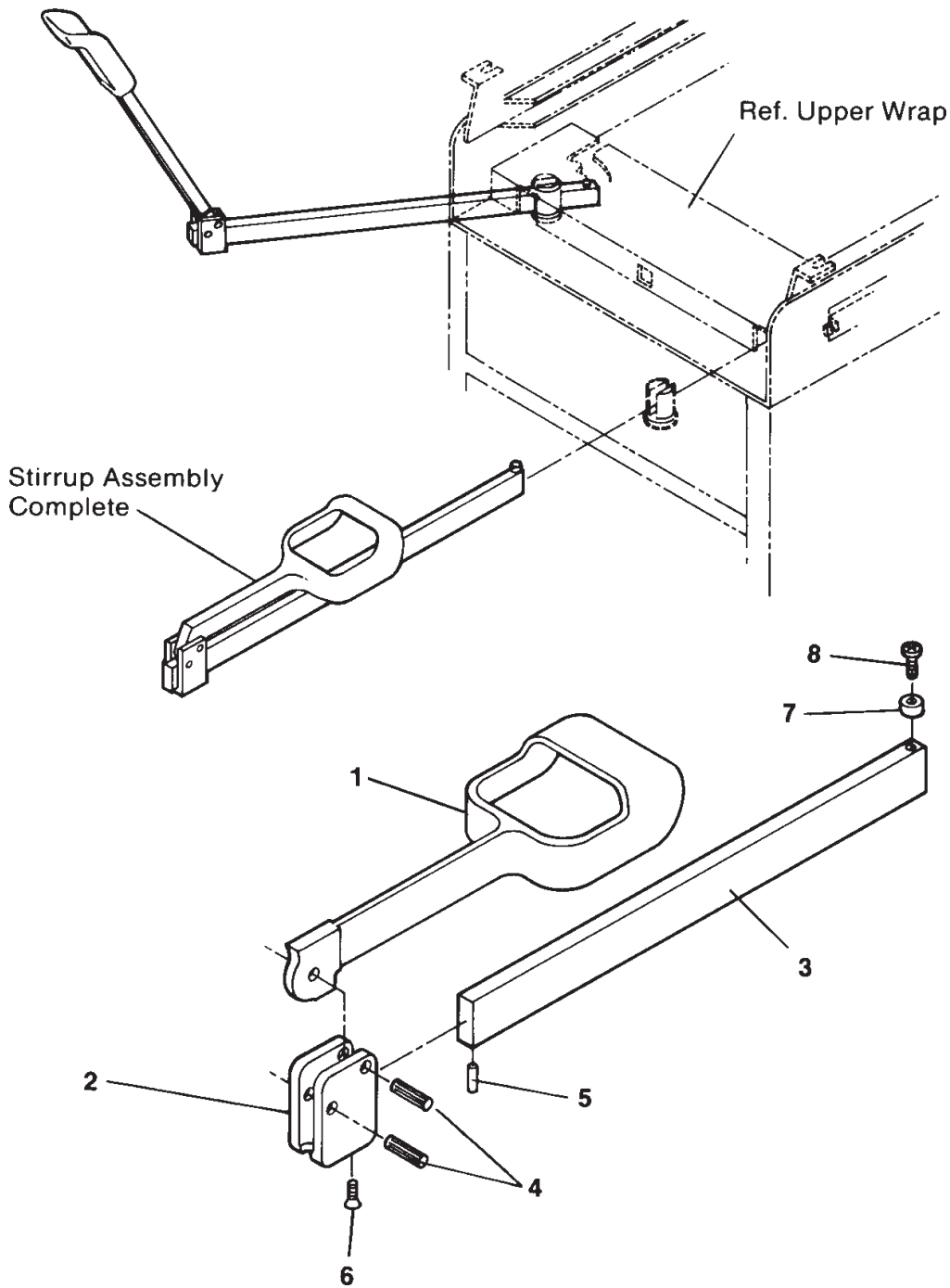
Item	Part No.	Description	Qty.	Item	Part No.	Description	Qty.
1	029-0313-00	Drawer Assembly - Front (Includes items 2, 3, 4, 6, 7, and 8)	1	10	053-0124-00	• Plastic Drawer	1
2	• 053-0125-00	• Plastic Drawer	1	11	• 055-3800-01	• Drawer Front (Top Side)	1
3	• 055-1200-03	• Drawer Front	1		• 055-4200-01	• Drawer Front (Side)	1
4	• 040-0006-00	• Screw	6	12	• 040-0008-26	• Screw	6
5	060-0002-02	Drawer Liner	1	13	060-0002-00	Drawer Liner	1
6	• 053-0013-00	• Self-Sticking Bumper	2	14	• 053-0012-00	• Drawer Divider	3
7	• 016-0136-00	• Slide (Complete-Inner & Outer)	1	15	• 016-0135-00	• Slide (Complete-Inner & Outer)	1
8	• 040-0008-26	Screw	1	16	• 040-0008-26	• Screw	1
9	029-0312-00	Drawer Assembly - Top Side (Includes items 10, 11, 12, 15, 16, and 17)	1	17	• 053-0013-00	• Self-Sticking Bumper	2
	029-0315-00	Drawer Assembly - Side (Includes items 10, 11, 12, 15, 16, and 17)	1				

NOTE: The above quantities are for one drawer unit.

Always Specify Model & Serial Number

Stirrup Assembly

SECTION VI PARTS LIST



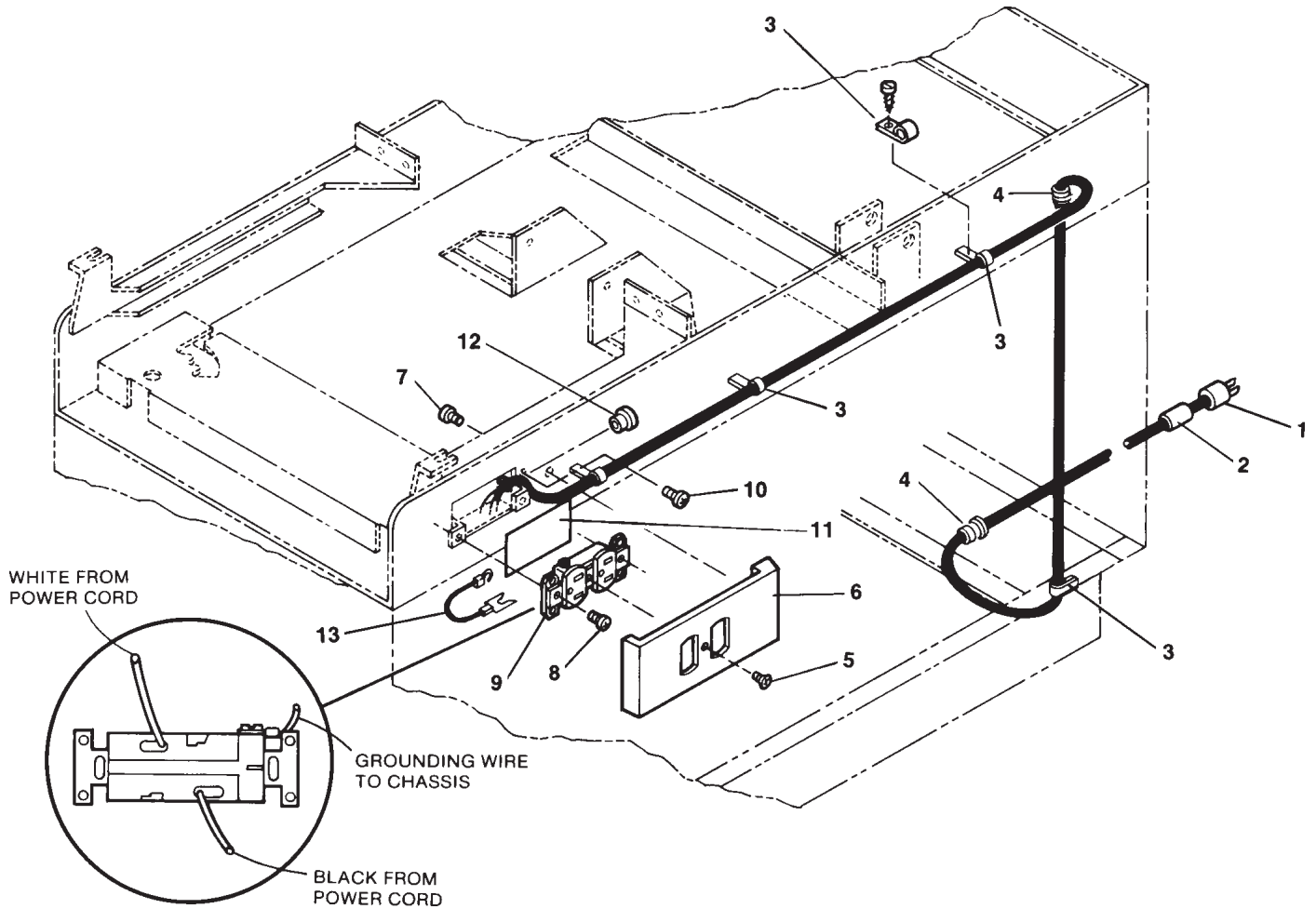
MA2652

Item	Part No.	Description	Qty.	Item	Part No.	Description	Qty.
	029-0152-00	Stirrup Assembly (Includes Items 1 thru 8)	2	4	•042-0001-00	• Roll Pin	2
1	•020-0001-01	• Stirrup, Vinyl Coated	1	5	•042-0001-02	• Roll Pin	1
2	•020-0012-00	• Block, Pivot	1	6	•040-0250-15	• Screw, Set	1
3	•051-0133-00	• Bar, Horizontal	1	7	•053-0081-00	• Nylon Spacer	1
				8	•040-0250-01	• Screw	1

Always Specify Model & Serial Number

Wiring Diagram (Standard)

SECTION VI PARTS LIST



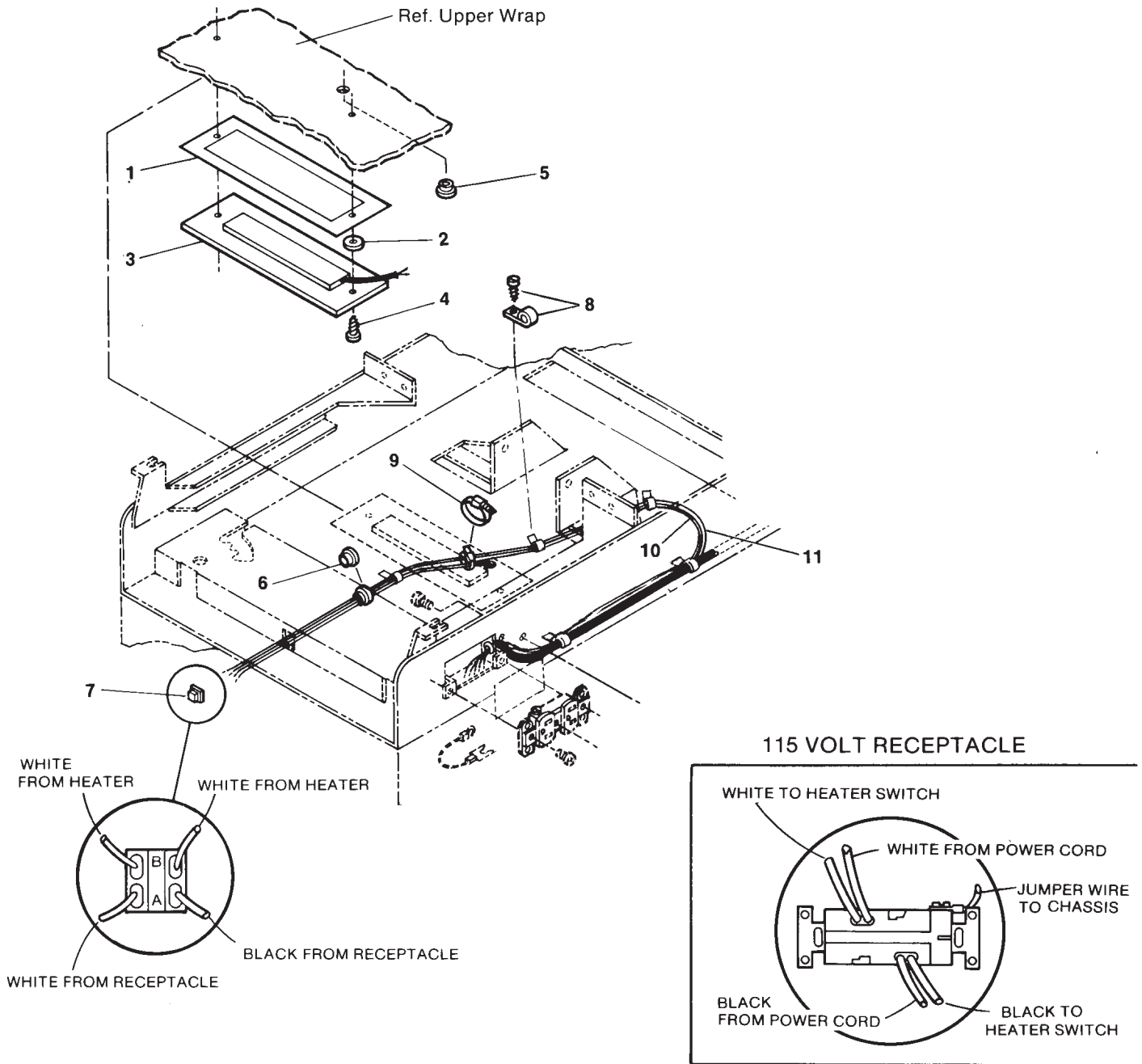
MA2653

Item	Part No.	Description	Qty.	Item	Part No.	Description	Qty.
1	015-0066-03	Cord Assembly	1	8	040-0006-13	Screw	2
2	061-0034-00	Cord Tag	1	9	015-0083-00	Duplex Receptacle	1
3	015-0007-02	Wrap-N-Tap Wire Clamp	4	10	040-0010-47	Screw	2
4	015-0002-01	Strain Relief Bushing	2	11	053-0092-00	Insulator, Fishpaper	1
5	040-0006-23	Screw	1	12	053-0068-07	Snap Bushing	1
6	053-0134-00	Receptacle Cover	1	13	015-0141-00	Jumper Wire (To Chassis)	1
7	040-0010-04	Screw	1				

Always Specify Model & Serial Number

Wiring Diagram (Units w/ Heaters)

SECTION VI PARTS LIST



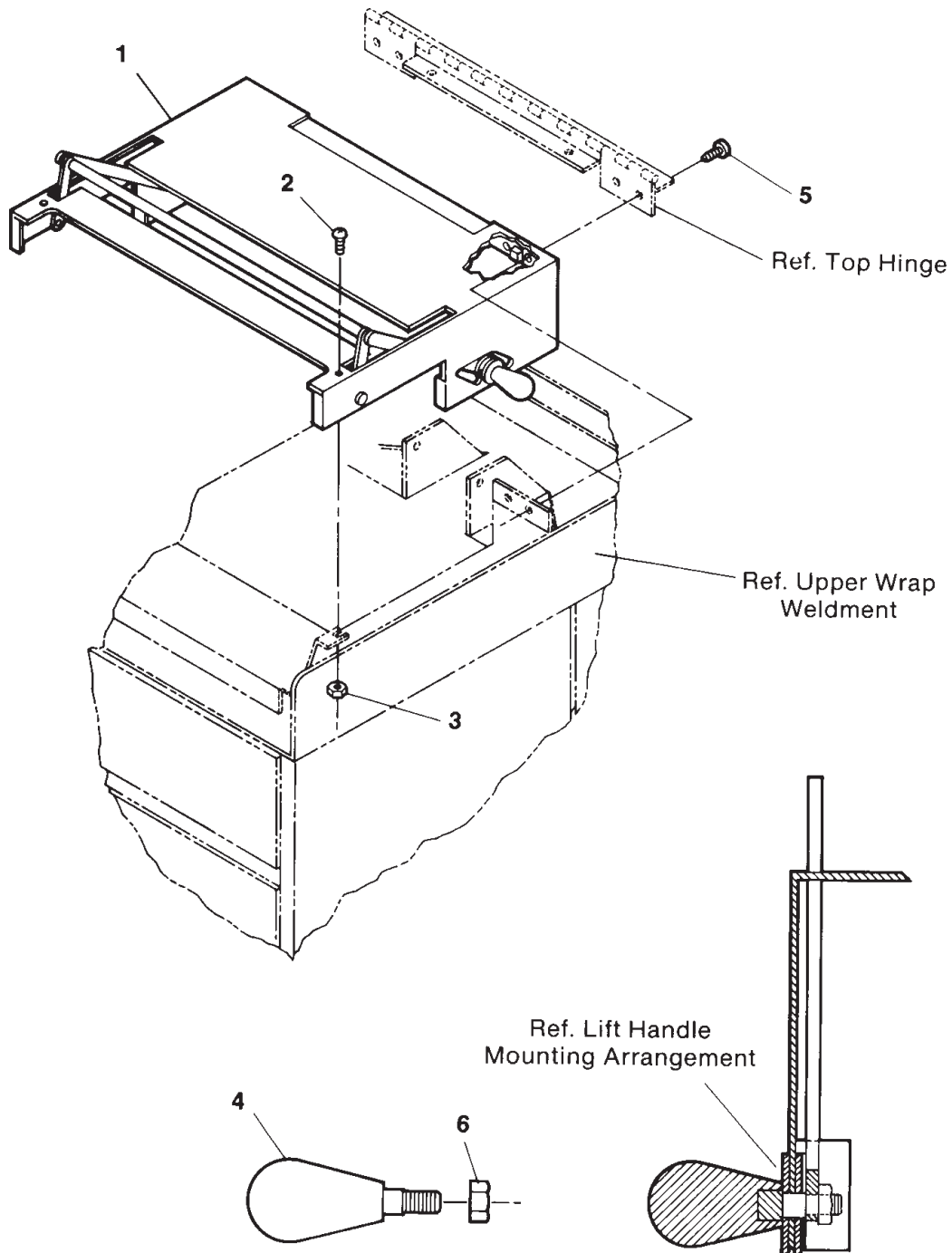
MA2654

Item	Part No.	Description	Qty.	Item	Part No.	Description	Qty.
1	053-0137-01	Heat Shield	1	7	015-0258-00	Heater Switch	1
2	016-0117-00	Roller	2	8	015-0007-03	Wrap-N-Tap Wire Clamp	3
3	029-1223-00	Heater Plate Assembly	1	9	015-0013-00	Cable Tie	3
4	040-0010-07	Screw	2	10	015-0064-03	Jumper Wire	1
5	053-0068-01	Snap Bushing	3	11	015-0064-02	Jumper Wire	1
6	053-0068-00	Snap Bushing	1				

Always Specify Model & Serial Number

Pelvic Tilt Assembly

SECTION VI PARTS LIST



MA2655

Item	Part No.	Description	Qty.	Item	Part No.	Description	Qty.
1	029-0319-00	Pelvic Tilt Assembly (Includes		4	• 016-0184-00	• Lift Handle	2
		Items 2, 3, 4 & 5)	1	5	• 040-0010-35	• Screw	4
2	• 040-0010-23	• Screw	2	6	041-0312-06	Jam Nut	2
3	• 041-0010-02	• Nut	2				

Always Specify Model & Serial Number

COMMENTS

The Technical Publications Department of Midmark Corporation takes pride in its publications. We are sure that our manuals will fill all of your needs when you are performing scheduled maintenance, servicing, or repairs on a Midmark product.

However, if you find any errors or feel that there should be a change, addition, or deletion to a manual, please let us know!

Page(s) and Paragraph(s) Needing Changed:

Description of Error or Desired Change:

Please fax or mail a copy of this completed comment sheet to:

Midmark Corporation
ATTN: Technical Publications Department
60 Vista Drive
Versailles, Ohio 45380
Fax: (937) 526-5542

Midmark Corporation
60 Vista Drive
P.O. Box 286
Versailles, Ohio 45380-0286
937-526-3662
Fax 937-526-5542
midmark.com



Because we care.

Subject to change without notice.
Refer to www.Documark.com for latest revision.