

**Questions/Comments:**

Visit us at [www.vagabondmotorsports.com](http://www.vagabondmotorsports.com)

Or email [sales@vagabondmotorsports.com](mailto:sales@vagabondmotorsports.com)

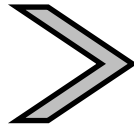
P/N: VM-Y310



## Yamaha YZF-R3 (2015+) Fender Eliminator Installation Instructions

### TOOLS REQUIRED:

- Phillips screwdriver
- 4mm Allen hex wrench
- 8mm, 10mm hex wrenches
- 8mm socket and driver (if re-using OEM turn signals)
- Tin snips or dikes (if re-using OEM turn signals)



Included in Yamaha tool bag under passenger seat

### PARTS INCLUDED:

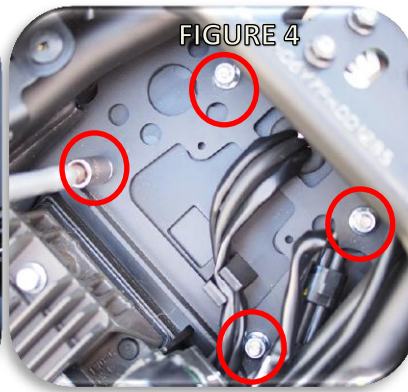
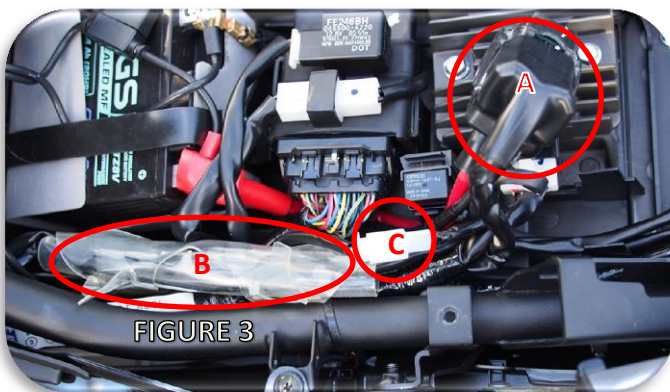
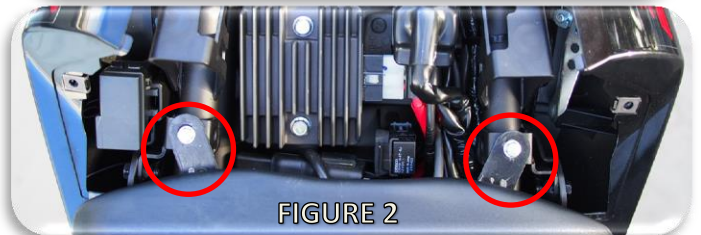
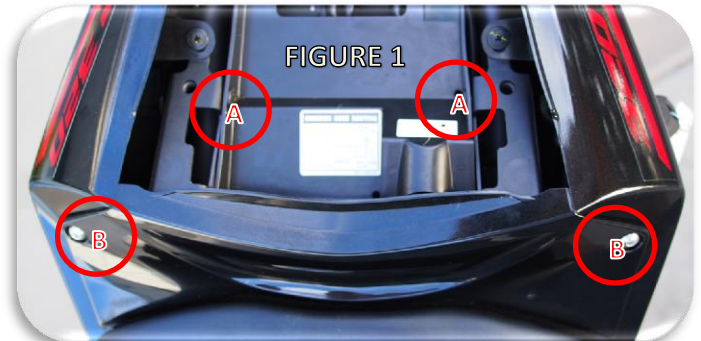
- Fender Eliminator
- 1X Rubber Grommet
- 2X Rubber Bumpers

### INSTALLATION VIDEO:

We've created a YouTube video to help explain the installation steps in more detail. Search "Vagabond Motorsports R3 Fender Eliminator Installation" or use the following link: <https://www.youtube.com/watch?v=HHklwSJJbGk>

### INSTALLATION STEPS:

1. Remove the rear passenger seat (key in left side of frame). Remove the tool bag from underneath the seat if you need the required tools listed above.
2. Remove the plastic tray from the passenger seat storage compartment (2X Phillips head screw rivets, FIGURE 1, A)
3. Remove the plastic center cover (2X 4mm allen head bolts) between the passenger and rider seats. (FIGURE 1, B)
4. Remove the rider seat (2X 8mm hex head bolts, FIGURE 2)
5. Slide the main fuse holder (in its rubber boot) off its mounts and move out of the way (FIGURE 3, A). This will allow the electrical wiring for the turn signals and license plate light to be removed easily. Unplug the electrical connectors for the rear turn signals (in the clear plastic protector, FIGURE 3, B) and the rear license plate light (white connector, FIGURE 3, C).
6. Unbolt the OEM rear fender from the motorcycle (4X 10mm hex nuts, FIGURE 4). Carefully feed the wiring for the fender through the hole in the sub-frame to completely remove the fender from the motorcycle. Set aside the four nuts, as they will be re-used.
7. Remove the trim panel from the factory rear fender (4X screw head plastic rivets, FIGURE 5)



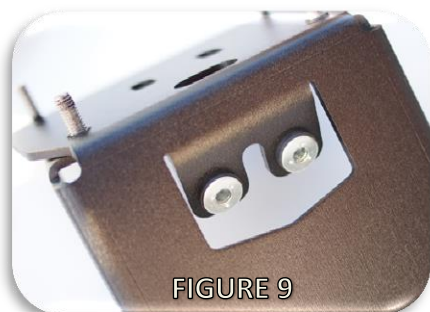
8. Remove the back plastic shell from the factory rear fender (FIGURE 6, A: 6X 4mm allen head bolts, B: 4X Phillips head screws).
9. If re-using the factory turn signals remove from the rear fender by removing the plastic plug inside the rear fender and pulling the turn signals out with their rubber mounts.



10. Remove the factory license plate light and the rubber mounting bushings. All the factory license plate hardware will be re-used so carefully set them aside (FIGURE 7).
11. If re-using the OEM turn signals, remove their rubber boot (8mm socket) and cut the metal retaining washers (tin snips or dikes required) to allow the wiring harness to be removed (FIGURE 8).



12. Remove the pre-installed rubber grommet from the slot in the fender eliminator. You will re-install this grommet soon.
13. Install the factory license plate light rubber bushings and steel cores into the fender eliminator (FIGURE 9).
14. Attach the factory license plate light to the fender eliminator with the factory screws. Pass the electrical connector through the slot in the fender eliminator where the grommet originally was installed.
15. Install the turn signals into the fender eliminator. If re-using the factory turn signals, use the supplied metal washers to attach the turn signal with the factory nut. The order of washers used is first the largest flat washer, then the split lock washer, then finally the smaller flat washer before the factory nut. Be sure to route the electrical cables in the notch to avoid being pinched by the washer stack (FIGURE 10). Pass the electrical connectors through the slot with the license plate light wiring.
16. If installing aftermarket turn signals that use the common 10mm stud, use the supplied plastic shoulder washers to improve the fit and finish and take up any gaps (FIGURE 11).



17. Pass the electrical connectors through the supplied rubber grommet, starting with the license plate connector (FIGURE 12). Install the rubber grommet back into the fender eliminator and remove any slack from the wiring from the turn signals and license plate light going to the grommet.
18. Remove the plastic protectors from the four studs on the fender eliminator. Install the fender eliminator onto the motorcycle using the factory locking nuts on the four studs.
19. Reverse steps 1-5 to complete the installation. Secure the extra wiring by creating a service loop and tucking it under the wiring loom of the motorcycle.

