

Questions/Comments:

Visit us at www.vagabondmotorsports.com

Or email sales@vagabondmotorsports.com

P/N: VM-KZ10



Kawasaki Z125 (2017+) Fender Eliminator Installation Instructions

TOOLS REQUIRED:

- 4mm allen head wrenches
- 10mm hex wrench
- 10mm socket and ratchet
- Flat head screwdriver
- Phillips screwdriver
- Needle nose pliers

PARTS INCLUDED:

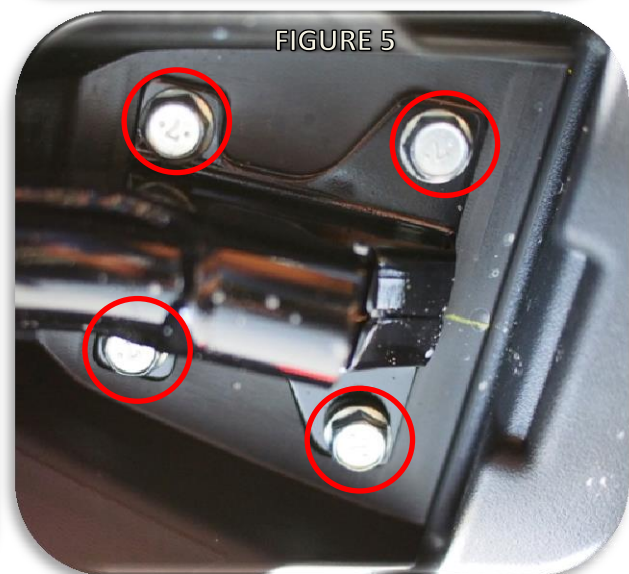
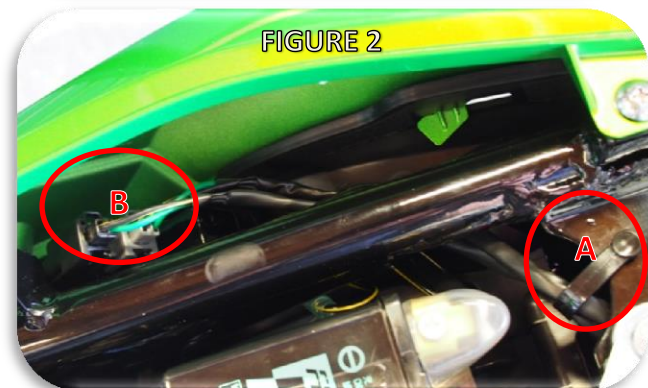
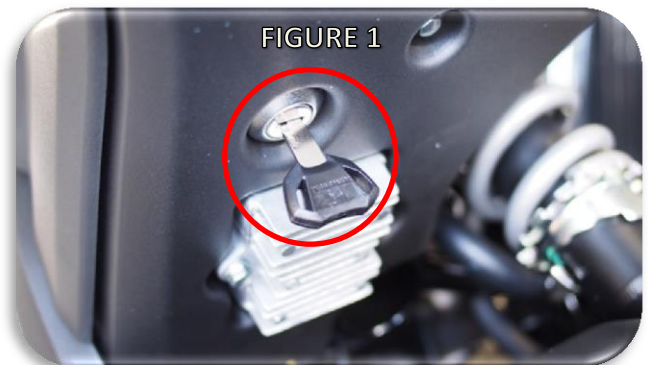
- Fender Eliminator
- 4X M6 bolts
- 4X M6 lock washers
- 4X M6 fender washers
- 2X M8 washers
- 2X Rubber bumpers
- Rubber grommet

INSTALLATION VIDEO:

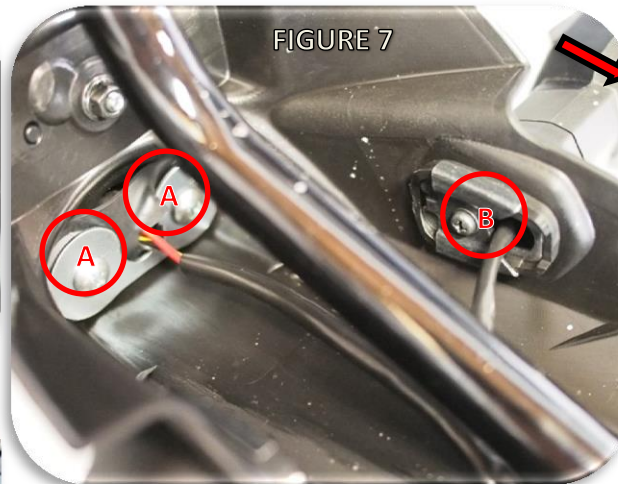
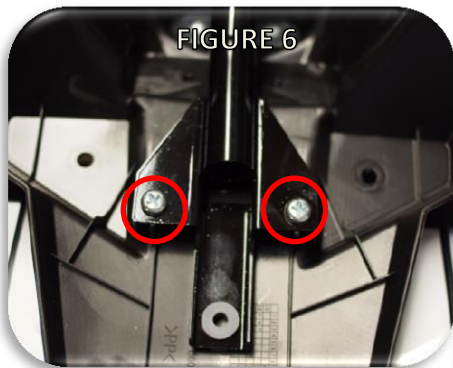
We've created a YouTube video to help explain the installation steps in more detail. Search "Vagabond Motorsports Z125 Fender Eliminator Installation" or use the link: <https://www.youtube.com/watch?v=Mnx5XU769ek>

INSTALLATION STEPS:

1. Remove the seat (key in slot under tail, FIGURE 1).
2. Remove the reusable cable guide with pliers (FIGURE 2A) and disconnect the turn signal connectors (grey and black 2-pin connectors on right/brake side subframe rail, FIGURE 2B). Use a flat blade screw driver to release the locking tabs on the connectors. Pull the connectors through the cable guide and set guide aside. Pull loose connectors under subframe tube and through the cable guide. Cable guides will be reused so set aside.
3. Disconnect the electrical connectors for the tail light (3-pin connector on left/shifter side subframe rail, FIGURE 3). Move connector out of the way.
4. Unwrap the black rubber strap under the tail light connector and disconnect the 2-pin connector for the license plate light (FIGURE 4A). Remove the reusable cable guide from it hole (FIGURE 4B) with pliers and use flat head screwdriver to split the guide open to remove it and set aside. Pull the license plate light wiring around the subframe tube in preparation for removal of the factory rear fender.
6. Remove the OEM rear fender from the motorcycle by removing the bolts that hold it to the sub-frame (4X 10 mm hex head bolts, FIGURE 5).
7. Remove the license plate from the OEM rear fender. (2X Phillips head screws and 10mm lock nuts, hardware may vary dealer to dealer). This hardware will be reused to mount the license plate light to the fender eliminator so do not discard.



8. Remove the steel tube frame from the OEM rear fender (2X phillips head screws, FIGURE 6).
9. Remove the OEM license plate light (2X phillips screws, FIGURE 7A). Remove the screws, washer plate, rubber bushings and rubber splash guard as these will be reused.
10. Remove the turn signals by removing the cover plates (2X phillips screws, FIGURE 7B), internal nut plates (FIGURE 8, pry out with flathead screwdriver) and finally by popping the signals out of the OEM fender by grabbing the signals at the base and pulling and rotating the signal (arrow in FIGURE 7 shows direction of rotation). Use video for reference if necessary.
11. Install the license plate light into the fender eliminator using the factory screws and washer plate. You will reuse the rubber bushing grommets from the OEM rear fender, but you will add the two supplied M8 washers in between the bushings and washer plate to make the bushings more firm during install (FIGURE 9).
12. Install the turn signals into the new fender eliminator by re-using the factory hardware (internal nut plates, cover plates and phillips screws). The turn signals install by starting the portion of the turn signal that is pointing towards the front of the motorcycle and slide it in the cutout in the fender eliminator and then rotating the entire turn signal until it pops through the fender eliminator and is firmly seated in its groove (FIGURE 10). After the signal is seated, install the nut plates by sliding one end in followed by pressing down on the other end. Note that the nut plate should be captured by the four rubber barbs in the turn signal boot. Reinstall the cover plates and tighten factory phillips head screws. Use video for reference if needed.



13. Pass the three electrical connectors for the turn signals and license plate light through slot in fender eliminator and then through the supplied rubber grommet. Install the grommet into the slot and pull the wires snug.
14. Install the fender eliminator on the motorcycle, first by passing the electrical connectors through the rectangular hole in the tail section. Use the supplied hardware (4X 4mm allen head bolts, lock washers and fender washers) to attach the fender eliminator to the motorcycle. The larger washers will be placed in between the motorcycle and the fender eliminator (FIGURE 11). It is easiest to start with the two bolts closest the front of the motorcycle and then installing the hardware in the two rearward holes after the front bolts have been threaded in partially. Use video for reference if needed.
15. Reconnect the wiring harnesses by reversing steps 1-5.
16. Reinstall the license plate and seat. Test that all lights are functional and double check that all hardware is tight.

TERMS & CONDITIONS

Legal Notice: The purchaser and/or user of any Vagabond Motorsports, LLC branded parts releases Vagabond Motorsports, LLC from all liabilities pertaining to use of the parts. The user acknowledges that any modification, alteration or change to a motorized vehicle may increase the risk of accident and/or injury. Additionally, the user acknowledges any change may render the motorized vehicle illegal for use in public roads. **Warranties:** All Vagabond Motorsports, LLC branded products carry a one-year limited liability against workmanship and material defects. This Warranty is provided to the original purchaser of the products. **Return Policy:** All approved returns must be in new and unused condition within 90 days of purchase.