

Questions/Comments:

Visit us at www.vagabondmotorsports.com

Or email sales@vagabondmotorsports.com

P/N: VM-KN610



Kawasaki Ninja ZX-6R (2013-2018) Fender Eliminator Installation Instructions

TOOLS REQUIRED:

- 5mm allen head wrench
- 8mm, 10mm hex sockets
- Phillips screwdriver
- Ratchet and extension

Additional recommended tools:

- Mini flathead screwdriver
- Right angle phillips screwdriver or phillips bit in socket

PARTS INCLUDED:

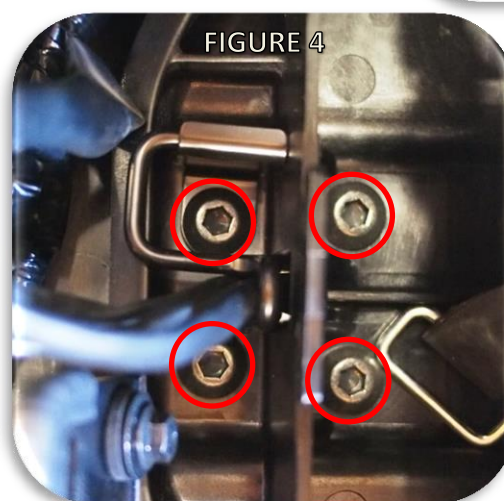
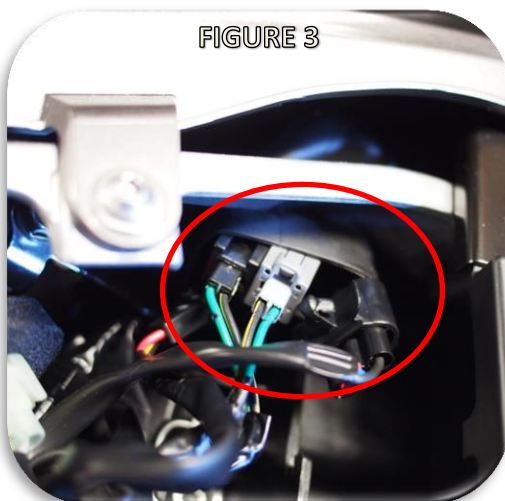
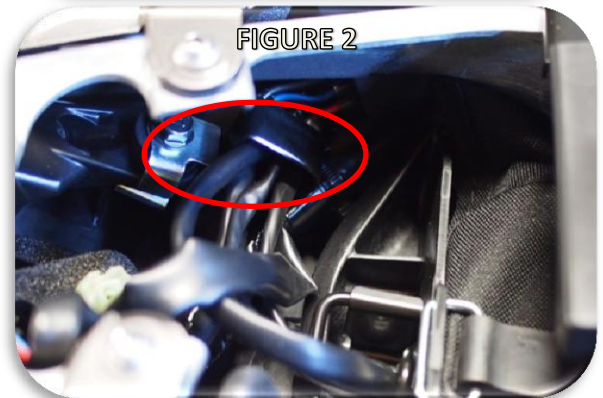
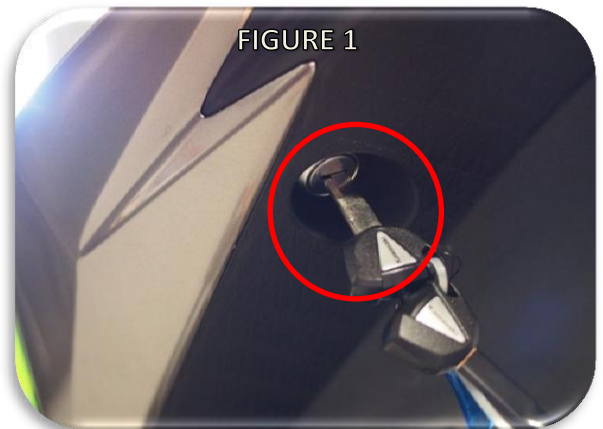
- Fender Eliminator
- 4X M6 lock nuts
- 2X M5 lock nuts
- 2X M4 phillips screws
- 2X Rubber bumpers

INSTALLATION VIDEO:

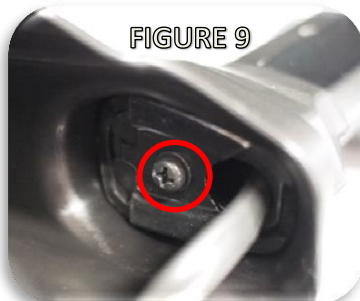
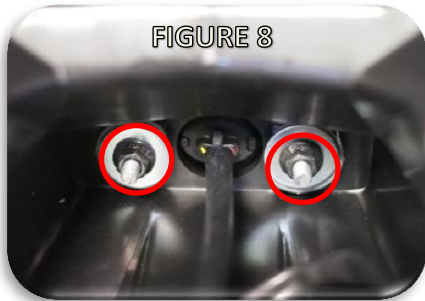
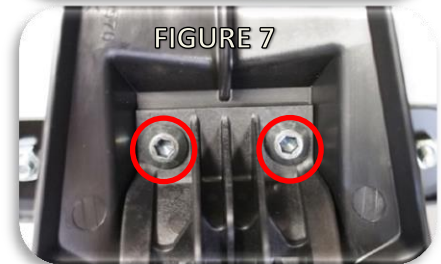
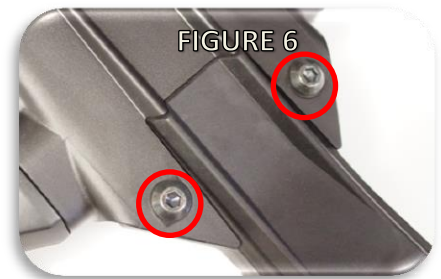
We've created a YouTube video to help explain the installation steps in more detail. Search "Vagabond Motorsports Ninja ZX-6R Fender Eliminator Install" or use the link: <https://youtu.be/PPBifSRzlpq>

INSTALLATION STEPS:

1. Remove the passenger seat (key slot under tail, FIGURE 1).
2. Open the flexible wire keeper (FIGURE 2) and release the wiring looms. Pull the wire bundle with the black rubber boot under the shifter-side subframe.
3. Roll the large black rubber boot (FIGURE 3) inside-out to get access to the electrical connectors. Disconnect the 4 electrical connectors inside the rubber boot, including the 3-pin connector for the taillight to make access easier. The grey and black connectors that have the same shape have a press-to-release latch at the rear portion of the connector but because it is difficult to squeeze them in the tight space, a mini flathead screwdriver can also be used to lift the latch in the front side of the connector. The larger black connector for the license plate light has a tooth that needs to be squeezed to disconnect.
4. Remove the factory tool kit from the tray by releasing the rubber strap. Remove the OEM rear fender from the sub-frame crossbar (4X 5mm allen head bolts, FIGURE 4). Support the fender with one hand and remove the last screw with the other to prevent the fender from falling. Guide the three wiring looms and connectors out of the hole in the tail tray.
5. Set the OEM fender aside for disassembly. Remove the license plate from the OEM rear fender. (2X Phillips head screws and 11mm hex nuts, FIGURE 5, hardware may vary dealer to dealer). This hardware will be reused to mount the license plate to the fender eliminator so do not discard.



6. Split the factory fender shell into two plastic pieces by removing the bolts on the top (2X 5mm allen head screws, FIGURE 6) and bottom (2X 5mm allen head screws, FIGURE 7) of the shell. These fasteners will not be reused so can be set aside for storage.
7. Remove the OEM license plate light (2X 8mm hex nuts, FIGURE 8). The factory hex nuts and rubber grommet will not be reused.
8. Remove the turn signal cover plates (2X phillips screws, FIGURE 9). These screws may be tight and are easy to strip when using a standard phillips screwdriver at an angle so take care during this step. A right angle screwdriver or phillips bit in a socket is recommended if available. This kit includes two new screws in the case these get damaged during removal.
9. Remove the turn signals by first removing internal nut plates (FIGURE 10, pry out with screwdriver or allen key) and finally by popping the signals out of the OEM fender by grabbing the signals at the base and pulling and rotating the signal end towards the front of the motorcycle (FIGURE 11 arrow).



10. Install the turn signals into the new fender eliminator by re-using the factory hardware (internal nut plates, cover plates and phillips screws). The turn signals install by starting the portion of the turn signal boot that is pointing towards the front of the motorcycle and slide it in the cutout in the fender eliminator and then rotating the entire turn signal (FIGURE 12 arrow) until it pops through the fender eliminator and is firmly seated in its groove. After the signal is seated, install the nut plates by sliding one end in followed by pressing down on the other end. Note that the nut plate should be captured by the four rubber barbs in the turn signal boot. Reinstall the cover plates and tighten factory phillips head screws. Use the supplied new phillips screws if factory screws were damaged during the removal process.



11. Install the license plate light into the fender eliminator. Use the two supplied M5 locknuts (8mm socket and ratchet, FIGURE 12A) instead of the factory nuts to prevent loosening over the life of the motorcycle.
12. Starting with the license plate light electrical loom, pass the three electrical connectors for the turn signals and license plate light through the hole in fender eliminator (FIGURE 12B).
13. Install the fender eliminator on the motorcycle, first by passing the electrical connectors through the hole in the tail section and then by aligning the four studs in the fender eliminator with the holes in the underside of the tail section. Lift the fender eliminator into place while pulling the wiring looms up snugly. Use the supplied hardware (4X M6 flanged lock nuts) to attach the fender eliminator to the motorcycle (12mm hex socket and ratchet). Do not overtighten as it will risk cracking the undertail plastic. Reuse the factory wire management bracket under the rearmost shifter-side hex nut.
14. Reconnect the wiring harnesses, make a service loop with the extra length of wiring loom, and tuck the loop into the rear of the tail tray. Complete the install by reversing steps 1-4.
15. Test that all lights are functional and double check that all hardware is tight before operating the motorcycle.

TERMS & CONDITIONS

Legal Notice: The purchaser and/or user of any Vagabond Motorsports, LLC branded parts releases Vagabond Motorsports, LLC from all liabilities pertaining to use of the parts. The user acknowledges that any modification, alteration or change to a motorized vehicle may increase the risk of accident and/or injury. Additionally, the user acknowledges any change may render the motorized vehicle illegal for use in public roads. **Warranties:** All Vagabond Motorsports, LLC branded products carry a one-year limited liability against workmanship and material defects. This Warranty is provided to the original purchaser of the products. **Return Policy:** All approved returns must be in new and unused condition within 90 days of purchase.