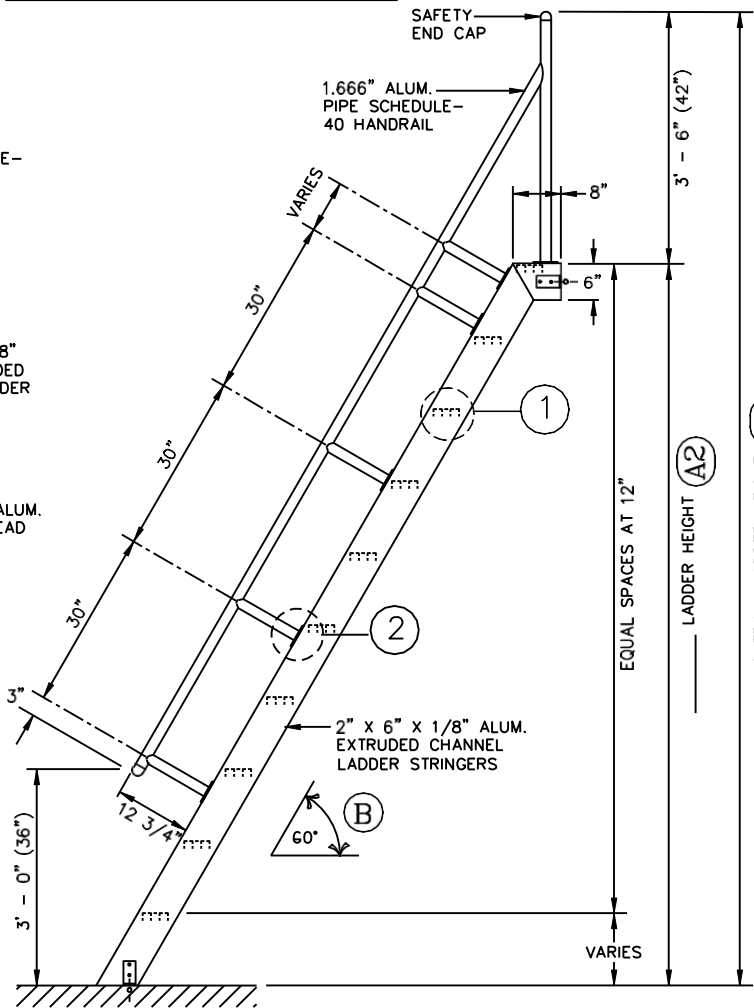


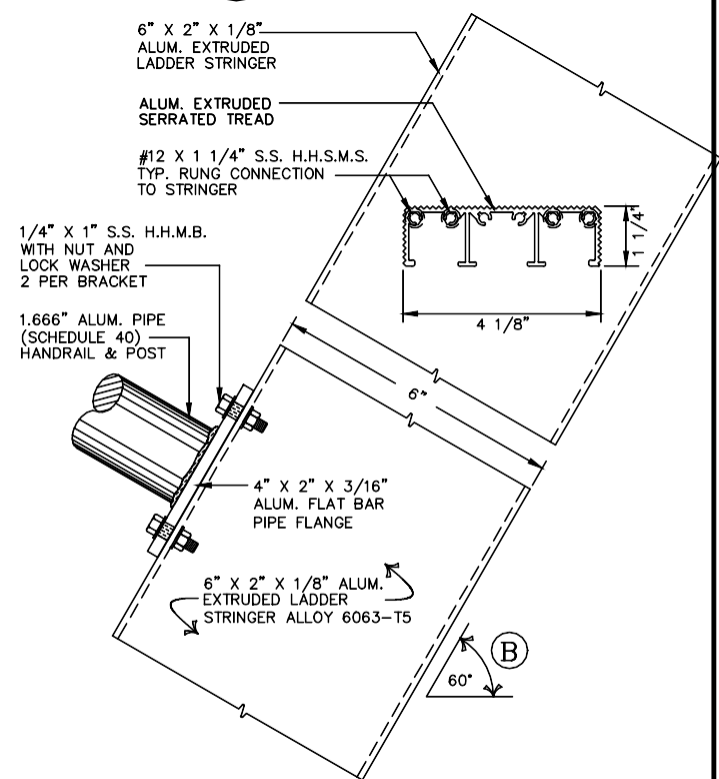
**FRONT ELEVATION**  
N.T.S.

**NOTE:**  
 • ALL BOLTS/FASTENERS NECESSARY TO ANCHOR LADDER BY OTHERS  
 • PIPE HANDRAIL TO BE FIELD ASSEMBLED



**SIDE ELEVATION**  
N.T.S.

**1 TREAD DETAIL**  
3" = 1' - 0"



**2 POST DETAIL**  
3" = 1' - 0"



28 - 4120 Ridgeway Dr  
 Mississauga, Ontario, L5L 5S9  
 P 2899992334 - F 9052672777  
 info@taimco.ca

**Aluminum Ship Ladder**  
**Model SL1486 & 60 Angle**

- \_\_\_\_\_ QUANTITY
- MILL FINISH
  - POWDER COATING
  - BRONZE ANODIZED
  - CLEAR ANODIZED

**SALE NO.**

DRAWN :

DATE :

SHEET : \_\_\_\_\_ OF \_\_\_\_\_