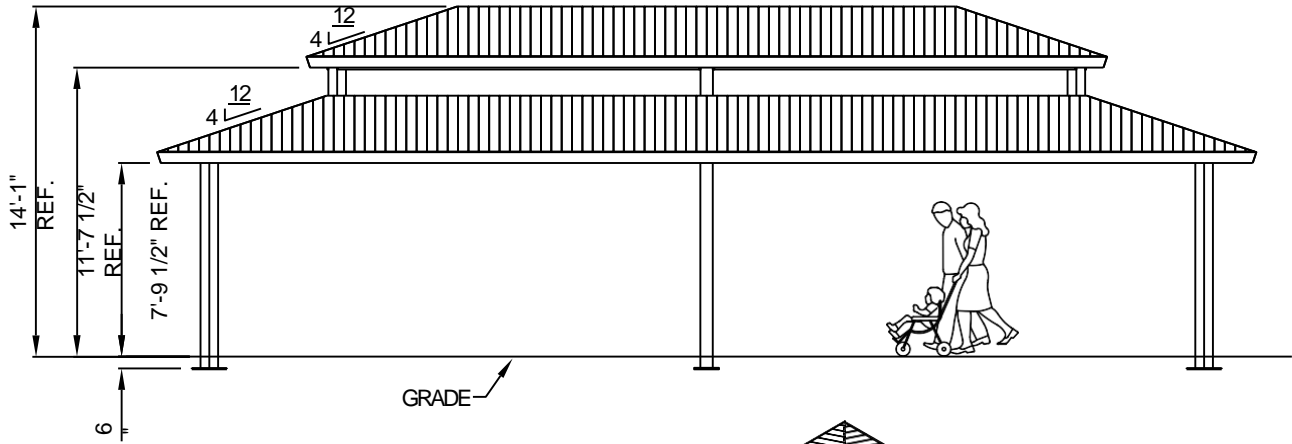
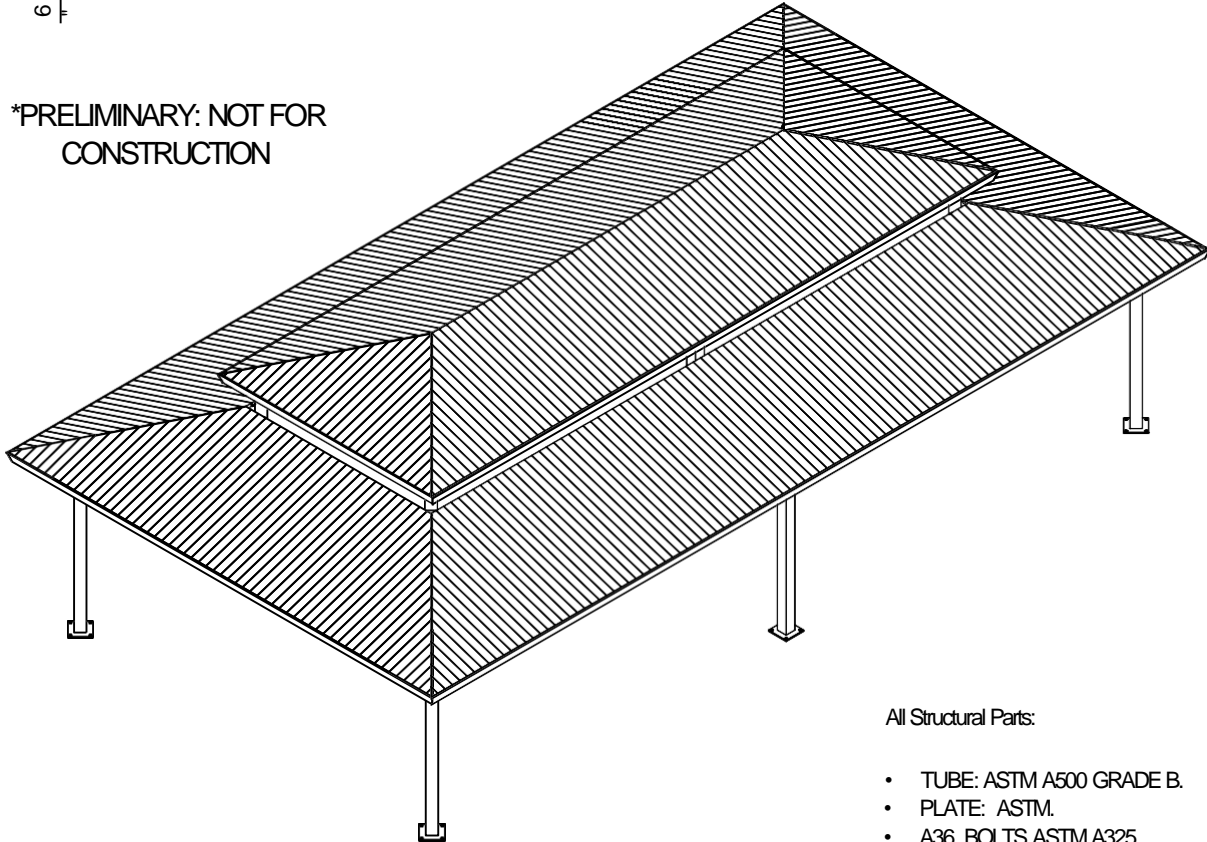


Rectangular Two Tiers Steel Structure Park Gazebo
GAZR2T

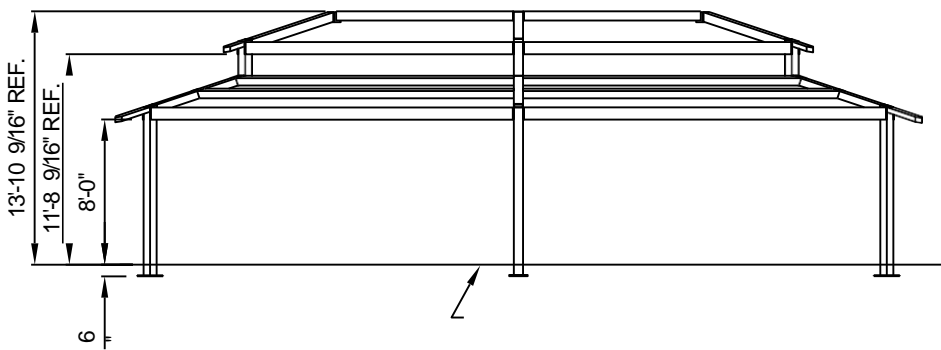
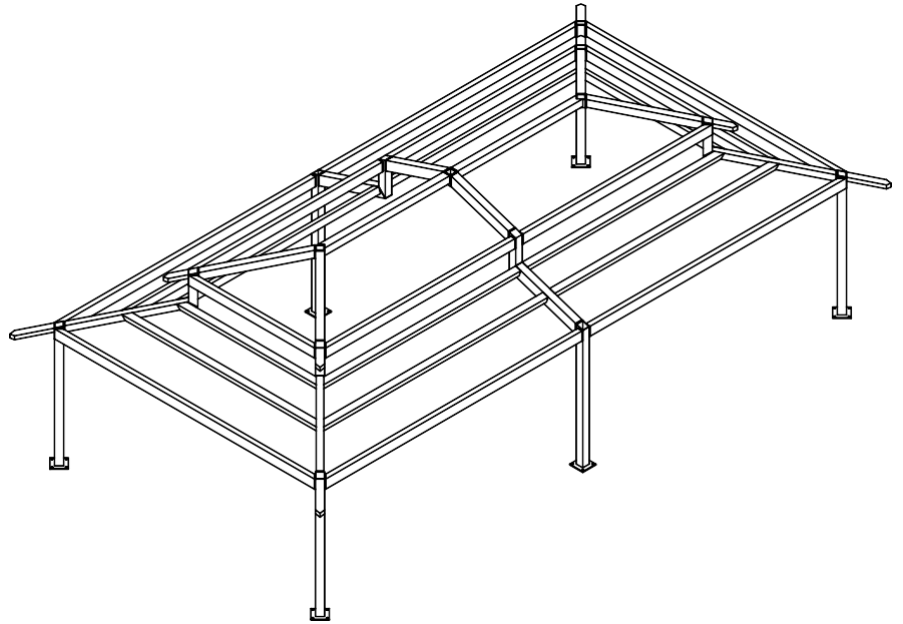
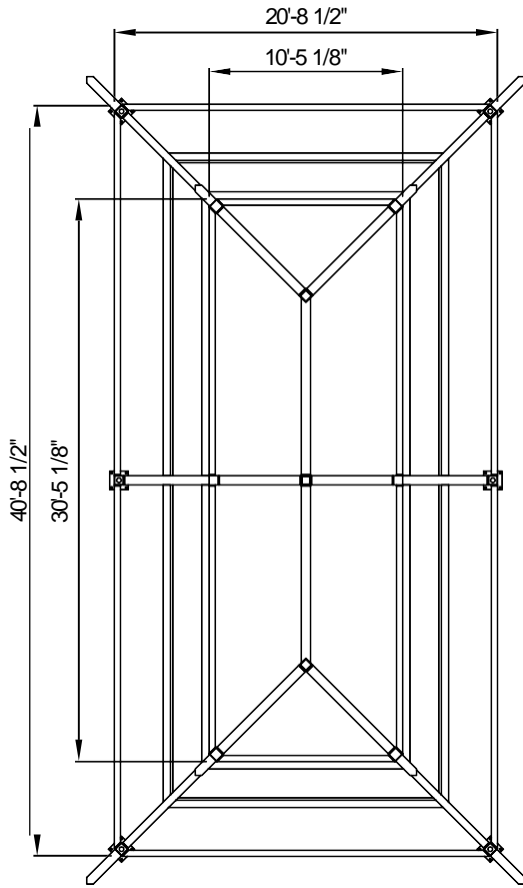


*PRELIMINARY: NOT FOR
CONSTRUCTION



All Structural Parts:

- TUBE: ASTM A500 GRADE B.
- PLATE: ASTM.
- A36 BOLTS ASTM A325.
- NUTS: ASTM A563.
- WELDING: GMAW.



ALL STRUCTURAL :

TUBE: ASTM A500 GRADE B

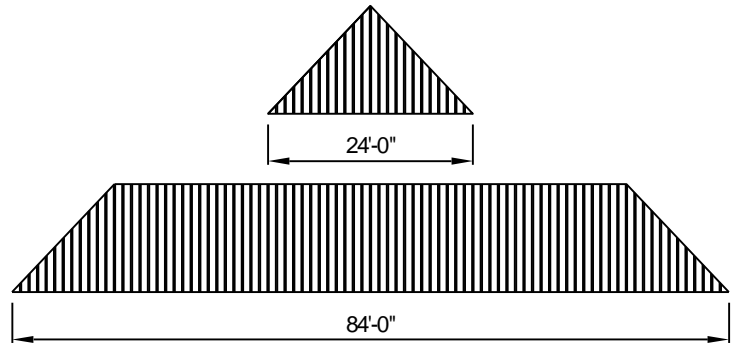
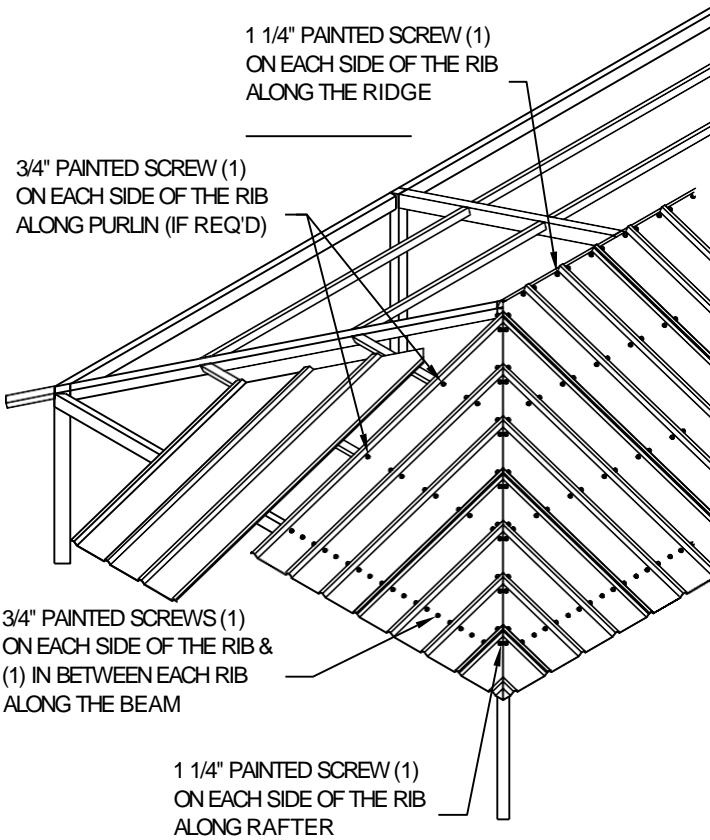
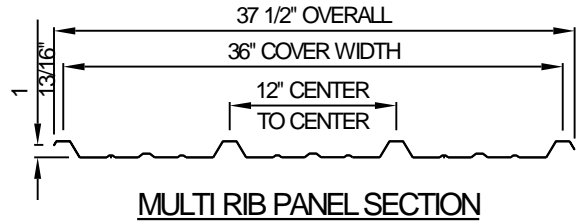
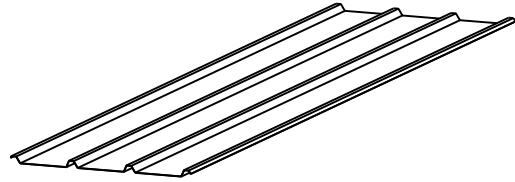
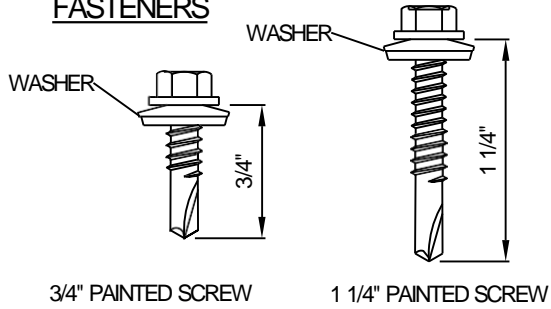
PLATE: ASTM A36

BOLTS: ASTM A325

NUTS: ASTM A563

WELDING: GMAW

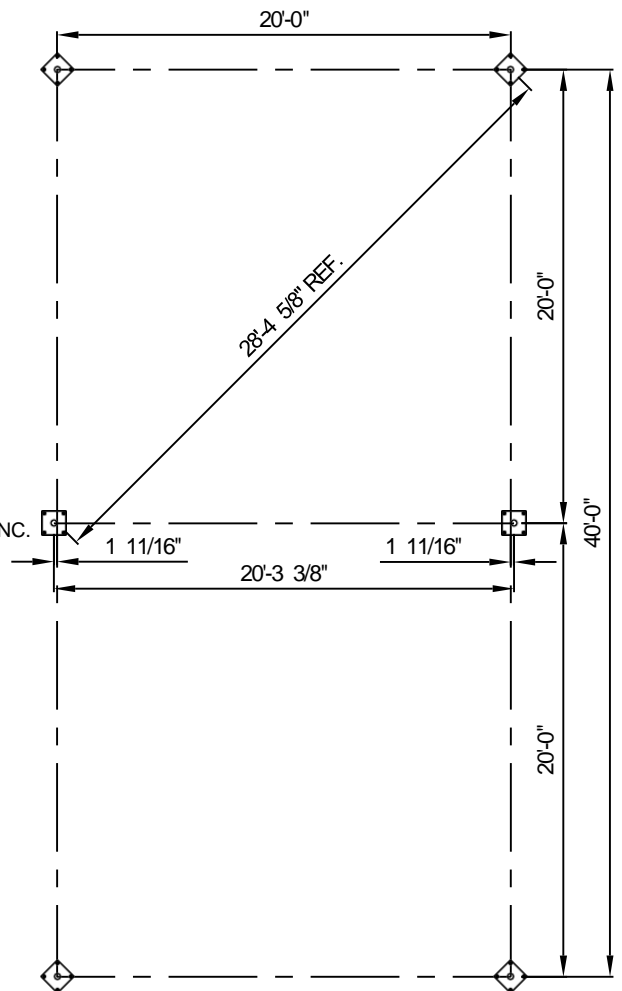
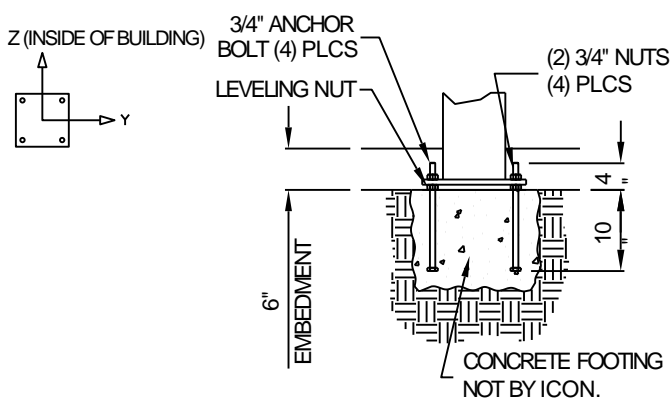
FASTENERS



METAL ROOF INSTALLATION

LOADS TO FOUNDATION
(KIPS, INKIPS)

LOAD COMBINATION	FOUNDATION LOADS				
	AXIAL(X)	SHEAR(Y)	SHEAR(Z)	MOMENT(Y)	MOMENT(Z)
DL	2.41	0.00	0.00	-0.88	-0.39
SL	6.00	-0.01	0.01	-2.53	-1.00
W/UPLIFT	-4.63	0.27	0.28	-28.72	28.97
W-FY	-3.27	-0.67	0.69	-72.51	-72.25
W-FZ	-0.71	-0.67	-0.68	72.98	-71.97
E-FY	0.00	0.00	0.00	0.37	-0.36
E-Z	0.00	0.00	0.00	0.37	-0.36



NOTES:

- TABLE SHOWS UNFACTORED SERVICE LOADS
- A FOUNDATION DESIGN HAS NOT BEEN PERFORMED BY ICON SHELTER SYSTEMS INC.
- A LICENSED ENGINEER FAMILIAR WITH SOIL CONDITIONS AT CONSTRUCTION SITE MUST PERFORM A FOUNDATION DESIGN.
- THE STRUCTURE HAS BEEN ENGINEERED AS AN OPEN STRUCTURE.
- CONSULT ICON SHELTER SYSTEMS INC. IF THE STRUCTURE IS TO BE ENCLOSED.
- COORDINATES ARE LOCAL TO THE COLUMN

Definitions:

- DL = Service Level Dead Load Reaction With The Greatest Axial Load
- SL = SERVICE LEVEL SNOW LOAD REACTION WITH THE GREATEST AXIAL LOAD
- W-UL = SERVICE LEVEL WIND LOAD REACTION WITH THE GREATEST UPLIFT LOAD
- W-Y = SERVICE LEVEL WIND LOAD REACTION WITH THE GREATEST MAGNITUDE OF SHEAR IN THE LOCAL Y DIRECTION
- W-Z = SERVICE LEVEL WIND LOAD REACTION WITH THE GREATEST SHEAR VALUE ACTING IN THE SAME DIRECTION AS THE DL SHEAR LOAD
- E-Y = SERVICE LEVEL SEISMIC LOAD REACTION WITH THE GREATEST MAGNITUDE OF SHEAR IN THE LOCAL Y DIRECTION
- E-Z = SERVICE LEVEL SEISMIC LOAD REACTION WITH THE GREATEST MAGNITUDE OF SHEAR IN THE LOCAL Z DIRECTION