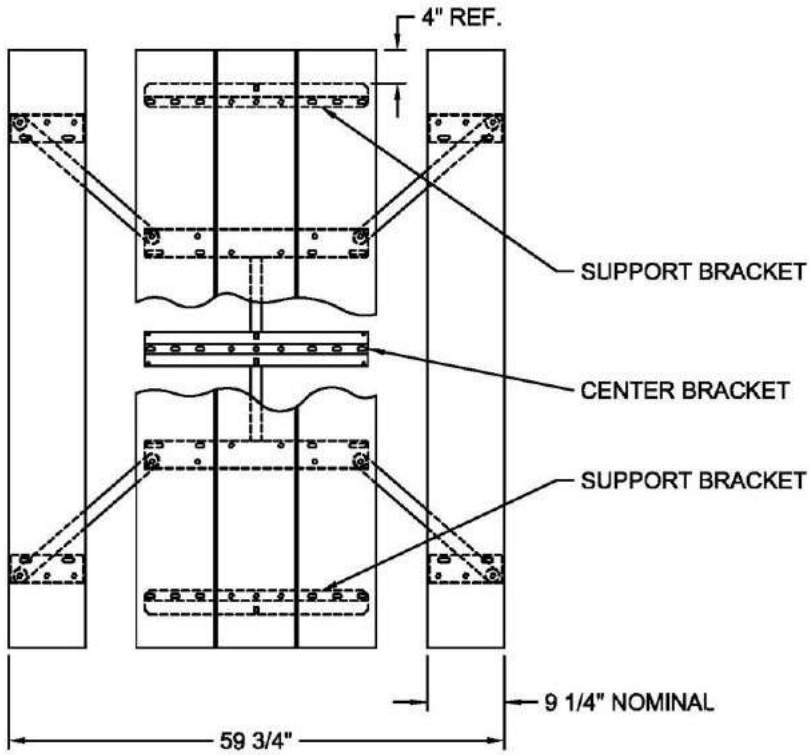
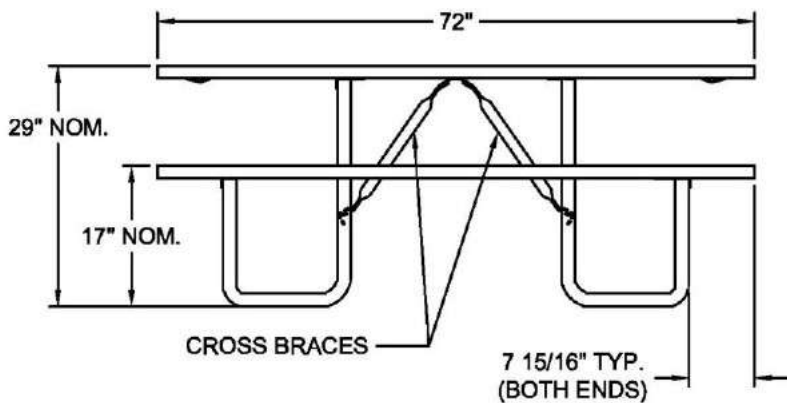
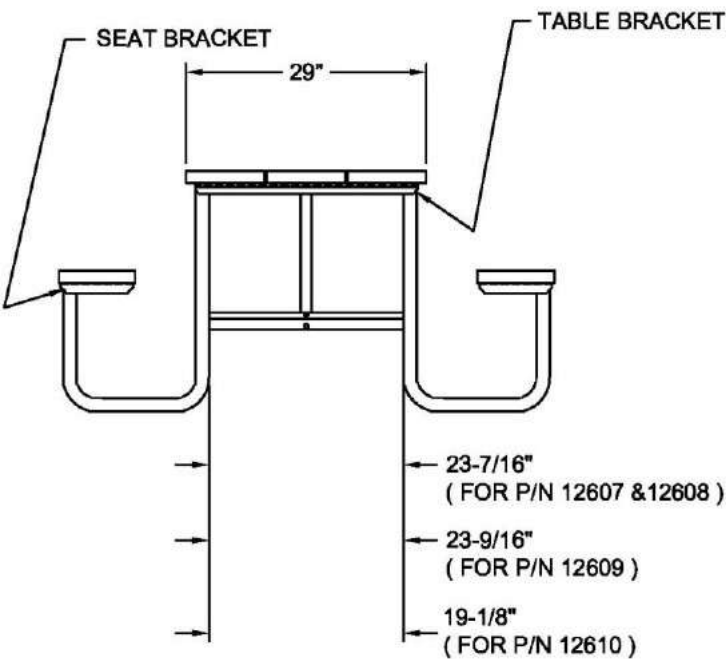




Handcrafting Your Imagination

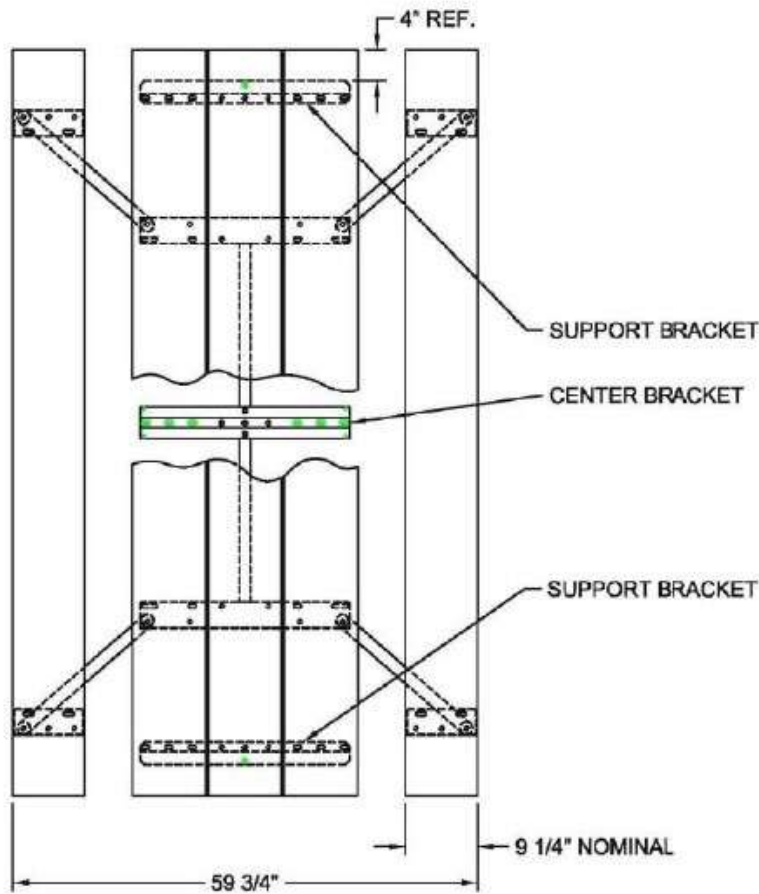


- Wheelchair accessibility at both ends.
- Seats are the same length as the table top, thus a benefit over the extended top design.
- Meets or exceeds current ADA guidelines for wheelchair access to picnic tables.
- The one-piece welded construction frames are fabricated using continuous MIG welds for strength.
- All pipe and tubing conform to ASTM A513-94, and all steel components conform to ASTM-A569.
- All cross braces are 1" schedule 40 pipe (.133" thk. wall).
- Center brackets are all 1/8" thk. (12 ga.) steel. Table and seat brackets are 1/8" thk. (12 ga.) steel for P/N's 12607, 12608 and 12609, and 3/16" thk. (7 ga.) steel for P/N 12610.
- Support brackets are 1/8" thk. (12 ga.) steel.
- Assembly fasteners are 3/8" dia. galvanized steel carriage bolts.
- Optional lumber is predrilled and has 3/8" radius rounded corners.
- All exposed corners are chamfered for safety.



TRIMCO

Handcrafting Your Imagination



- Wheelchair accessibility at both ends.
- Seats are the same length as the table top, thus a benefit over the extended top design.
- Meets or exceeds current ADA guidelines for wheelchair access to picnic tables.
- The one-piece welded construction frames are fabricated using continuous MIG welds for strength.
- All pipe and tubing conform to ASTM A513-94, and all steel components conform to ASTM-A569.
- All cross braces are 1" schedule 40 pipe (.133" thk. wall).
- Center brackets are all 1/8" thk. (12 ga.) steel. Table and seat brackets are 1/8" thk. (12 ga.) steel for P/N's 12607, 12608 and 12609, and 3/16" thk. (7 ga.) steel for P/N 12610.
- Support brackets are 1/8" thk. (12 ga.) steel.
- Assembly fasteners are 3/8" dia. galvanized steel carriage bolts.
- Optional lumber is predrilled and has 3/8" radius rounded corners.
- All exposed corners are chamfered for safety.

