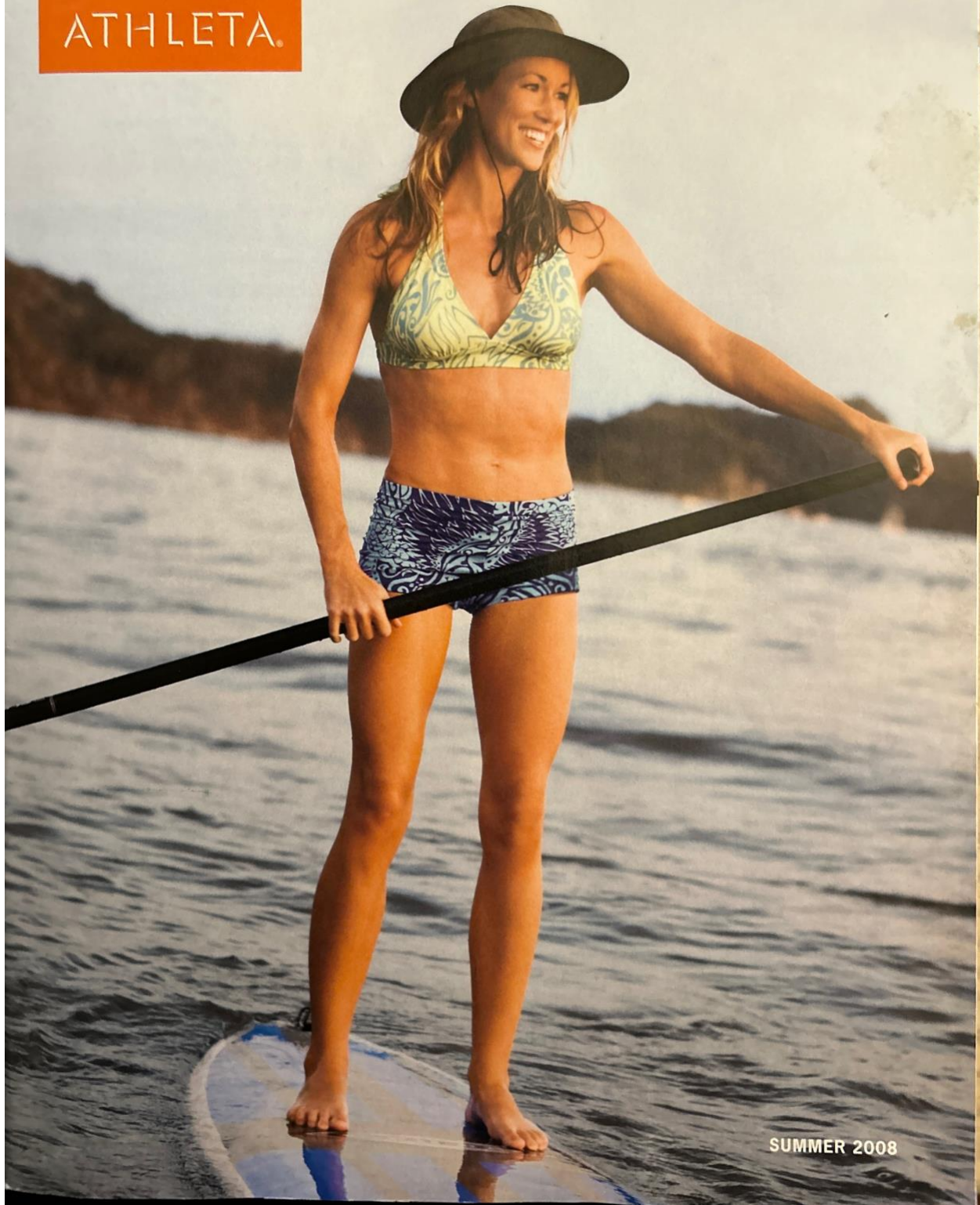
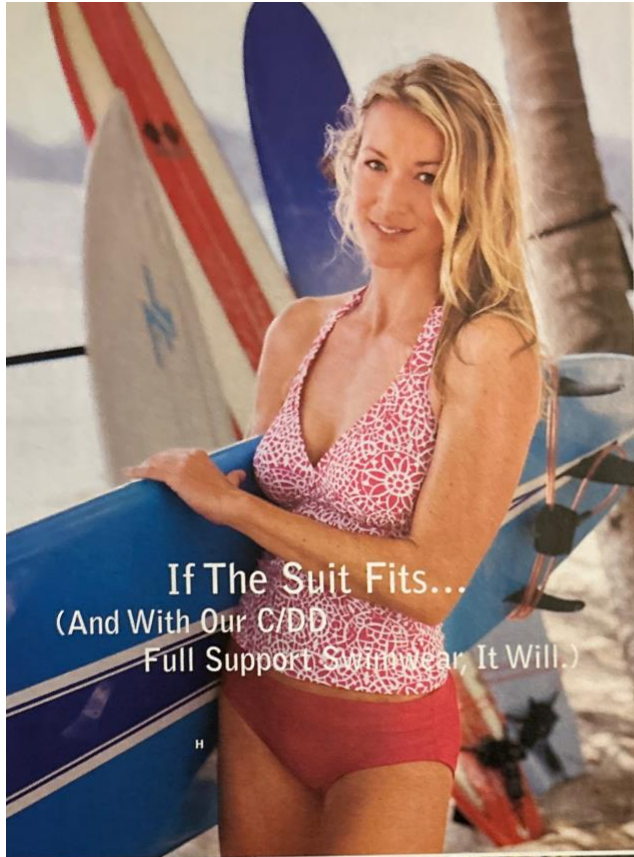


ATHLETA.



SUMMER 2008



If The Suit Fits...  
(And With Our C/DD  
Full Support Swimwear, It Will.)



**A-J MOROCCAN TILE SWIM SERIES**

**NEW** The choices for suiting up in C-DD fitting swimwear couldn't get any better this season. This series is loaded with our favorite suit styles in a print reminiscent of a tiled pool bottom and the most coveted solid suit color of the season: white. The tops all feature our floating underwire bras with true cup sizes for maximum support. Rated UPF 50+. Import. FABRIC CONTENT: NYLON/SPANDEX, LINING: POLYESTER Top sizes: 1(34C/32D/30DD), 2(36C/34D/32DD), 3(38C/36D/34DD), 4(40C/38D/36DD), 5(42C/40D/38DD), 6(44C/42D/40DD). Bottom sizes: XS-XL

**A, B] THE MOROCCAN TILE SHIRRED BRA CUP TANKINI AND THE SHIRRED BRA CUP TANKINI** are revolutionary new styles that take their design inspiration from some of the classic American beauties of the past. They adjust from a long tunic length to a shorter tankini length with the shirring at the sides. Plus, adjustable lingerie straps and a curved v-neckline.

**A] MOROCCAN TILE SHIRRED BRA CUP TANKINI | Moroccan Tile | #40340 | \$59**  
**B] SHIRRED BRA CUP TANKINI | Geranium, White (on model opposite page) | #40412 | \$59**

**C, D] THE MOROCCAN TILE BRA CUP BIKINI AND THE BRA CUP BIKINI** are flattering halter tops with fully-adjustable neck and back ties and wide base bands.

**C] MOROCCAN TILE BRA CUP BIKINI | Moroccan Tile | #40380 | \$59**  
**D] BRA CUP BIKINI | Geranium, White (both on model) | #39317 | \$54**

**E, F] THE MOROCCAN TILE BRA CUP TANKINI AND THE BRA CUP TANKINI** have adjustable ties at the neck and back for dialing in the perfect fit and a length that just meets the top of your swim bottom for coverage.

**E] MOROCCAN TILE BRA CUP TANKINI | Moroccan Tile (on model) | #40381 | \$69**

**F] BRA CUP TANKINI | Geranium, White | #39319 | \$64**  
**G, H] THE MOROCCAN TILE HIGH TIDE SHIRRED BOTTOM AND THE HIGH TIDE SHIRRED BOTTOM** have higher rises, medium-cut legs, flattering shirring at the sides and full-coverage seats.

**G] MOROCCAN TILE HIGHTIDE SHIRRED BOTTOM | Moroccan Tile | #40385 | \$42**

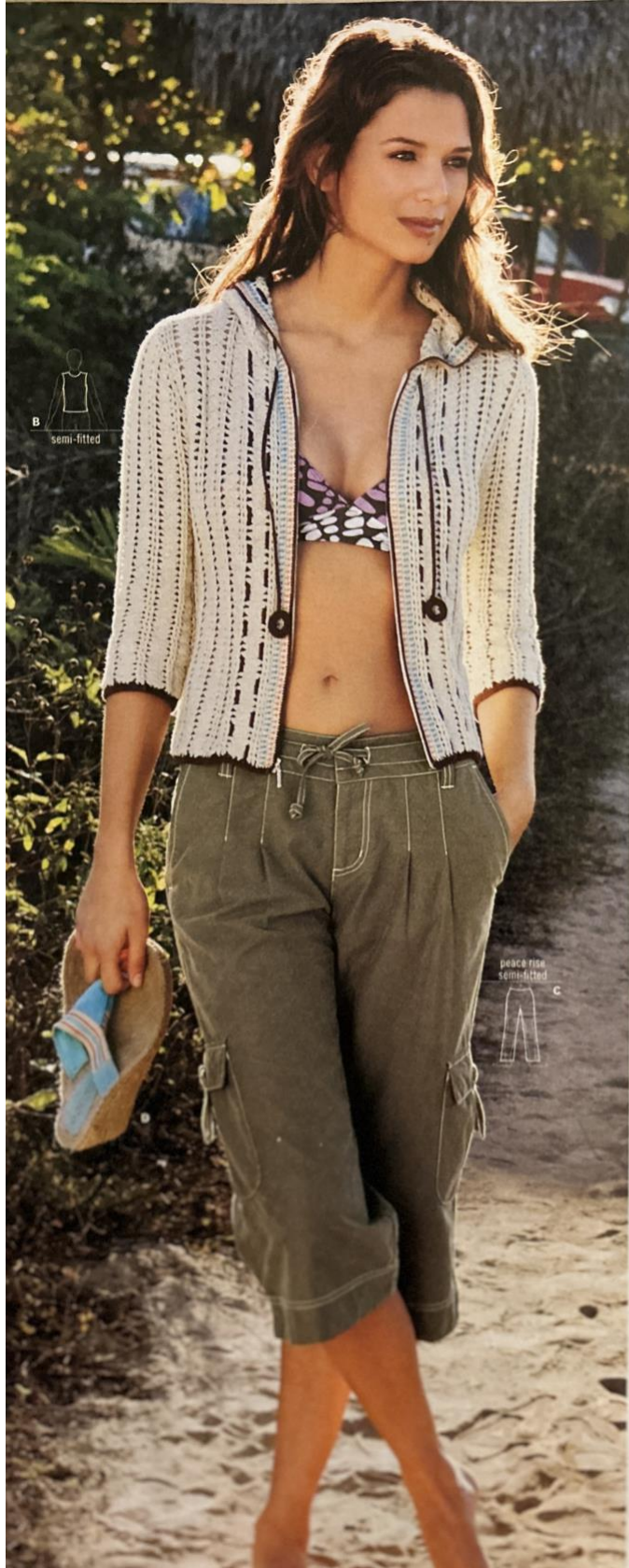
**H] HIGH TIDE SHIRRED BOTTOM | Geranium, White (both on model) | #40410 | \$42**

**I, J] THE MOROCCAN TILE MINI SARONG AND THE MINI SARONG** are skirted swim bottoms with wide waistbands and a faux wrap design with a side slit. Outseam in size medium: 12".

**I] MOROCCAN TILE MINI SARONG | Moroccan Tile (on model) | #40383 | \$46**

**J] MINI SARONG | Geranium, White | #40411 | \$46**





**A] SURF WAX**

**NEW** Totally eco-friendly, this surf wax formula from Wet Women was developed over the course of a year by a husband and wife team in their garage in Maui. This surf wax is the first Hawaii-made product to be certified as a Cradle to Cradle Biological Nutrient, meaning it is made from safe, healthy materials that are returned to the earth as compost when you're done with them. Not only is that good juju, but it's exactly what you want against your body all day out on the water. USA. White | **One Size | #40585 | \$4**



**B] CUTBACK CROCHET HOODIE**

**NEW** Looking for the coziness of a fall sweater without the overheating warmth? Bingo! With an all-over perforated crochet construction, this waist-length semi-fitted sweater keeps you covered without making you feel like you're in a sweat lodge. Drawstring cinch hood has crochet toggles, ¾-sleeves can be pushed up and full front zip offers ventilation options. Body length in size medium: 22". Import. FABRIC CONTENT: COTTON. Linen | **XS-XL | #39311 | \$89**

**C] COASTAL CAPRI**

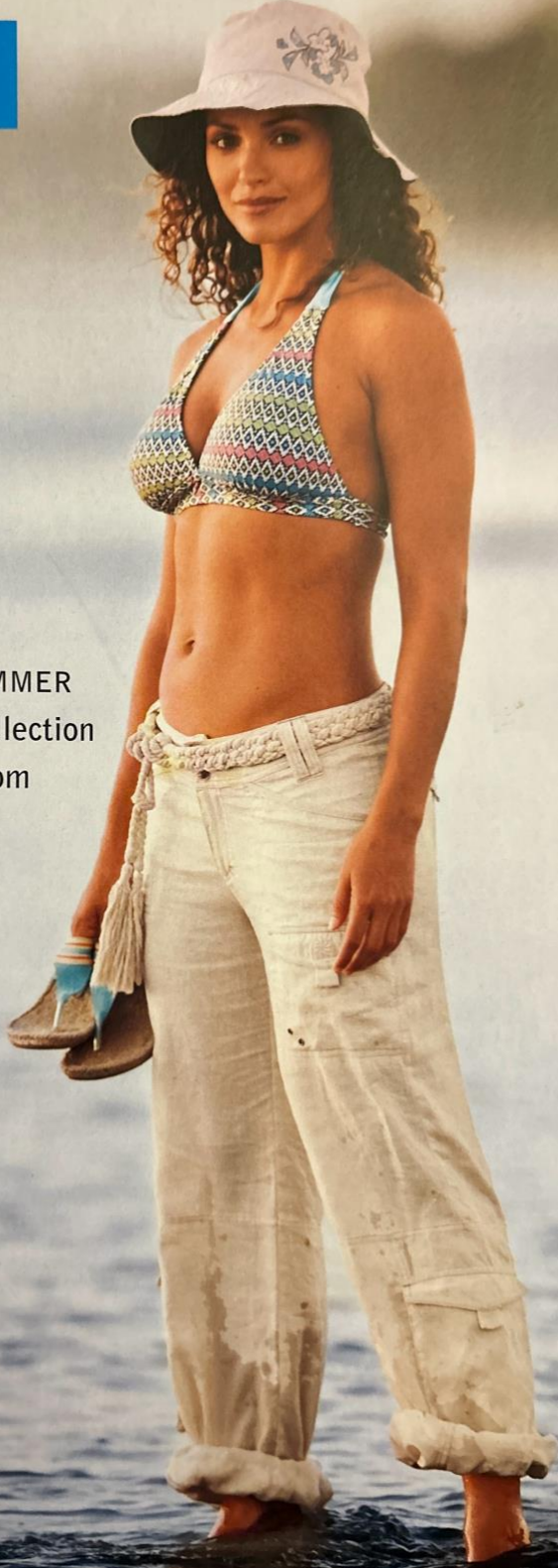
**NEW** Pleats get a bad rap because they make you look bigger, but we have the perfect solution for the pleated look without the magnifying effect. This semi-fitted capri has flattering flat front pleats that open up into a wide leg for ultimate range of motion. Details include: adjustable drawstring waist, just-below-the-knee length, durable construction, two side cargo pockets, two front hand warmer pockets and two rear welt pockets. Inseam: 20". Import. FABRIC CONTENT: HERRINGBONE (COTTON/NYLON). Nettle, Cornsilk, Tumbleweed (on model) | **2-16 (even sizes) | #39230 | \$59**

**D] NEW ZOE ESPADRILLE** is sold on page 96. **#40562 | \$45**



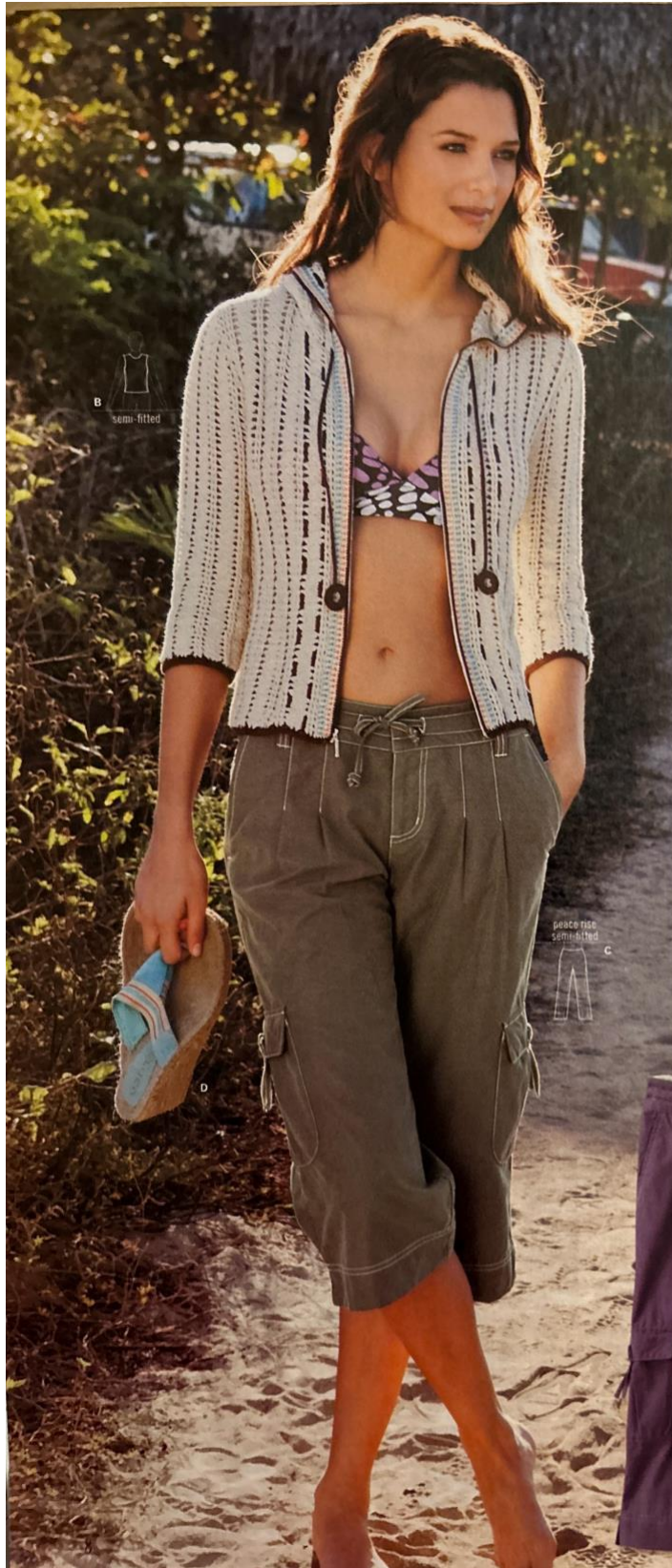
The Athleta logo is a blue rectangular box with the word "ATHLETA" in white, uppercase, sans-serif font. The box is slightly curved at the top and bottom edges.

ATHLETA®

A woman with curly hair is standing in shallow water, wearing a colorful patterned halter top, white cargo pants with a braided waistband, and a white bucket hat with a floral design. She is holding a pair of brown sandals with blue and white stripes. The background is a blurred ocean scene.

HERE'S A TASTE OF SUMMER  
For The Full Summer Collection  
Check Out [athleta.com](http://athleta.com)

SUMMER 2008



B  
semi-fitted

pleated rise  
semi-fitted  
C

D

**A) SURF WAX**

**NEW** Totally eco-friendly, this surf wax formula from Wet Women was developed over the course of a year by a husband and wife team in their garage in Maui. This surf wax is the first Hawaii-made product to be certified as a Cradle to Cradle Biological Nutrient, meaning it is made from safe, healthy materials that are returned to the earth as compost when you're done with them. Not only is that good juju, but it's exactly what you want against your body all day out on the water. USA. White | One Size | #40585 | \$4



**B) CUTBACK CROCHET HOODIE**

**NEW** Looking for the coziness of a fall sweater without the overheating warmth? Bingo! With an all-over perforated crochet construction, this waist-length semi-fitted sweater keeps you covered without making you feel like you're in a sweat lodge. Drawstring cinch hood has crochet toggles, ¾-sleeves can be pushed up and full front zip offers ventilation options. Body length in size medium: 22". Import. FABRIC CONTENT: COTTON. Linen | XS-XL | #39311 | \$89

**C) COASTAL CAPRI**

**NEW** Pleats get a bad rap because they make you look bigger, but we have the perfect solution for the pleated look without the magnifying effect. This semi-fitted capri has flattering flat front pleats that open up into a wide leg for ultimate range of motion. Details include: adjustable drawstring waist, just-below-the-knee length, durable construction, two side cargo pockets, two front hand warmer pockets and two rear welt pockets. Inseam: 20". Import. FABRIC CONTENT: HERRINGBONE (COTTON/NYLON). Nettle, Cornsilk, Tumbleweed (on model) | 2-16 (even sizes) | #39230 | \$59

**D) NEW ZOE ESPADRILLE** is sold on page 18. #40562 | \$45





**A) SARONG SKIRT**

**NEW** In your dream world, the beach goes on forever and the sarong you're wearing doesn't need to be tied to stay up. At least one of your dreams will come true with this semi-fitted Prana® skirt. Made from lightweight, raw edge cotton and featuring a tie-dye print, this skirt has a wide ribbed waistband with external drawstring and a handkerchief overlap front. Outseam in size medium: 26". USA. FABRIC CONTENT: COTTON. **Lake (on model), Espresso, Black | XS-XL | #40393 | \$50**

