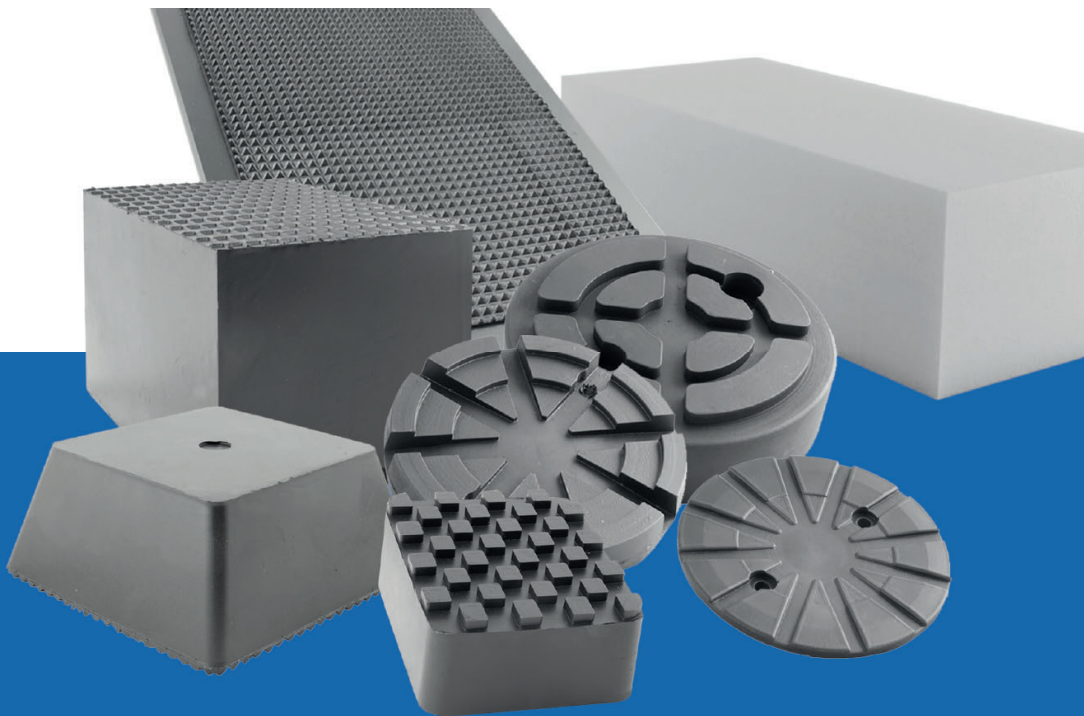


# böck

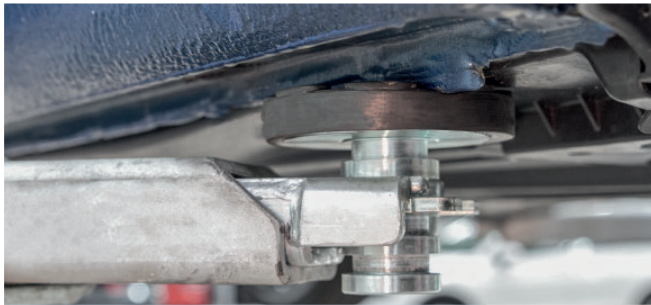


## PRODUCT CATALOGUE 2024

RUBBER PADS | RUBBER BLOCKS | POLYMER BLOCKS  
RUBBER PLATES | SPECIAL EQUIPMENT | RUBBER RAMPS  
FILLER PLATES

for automotive lifts





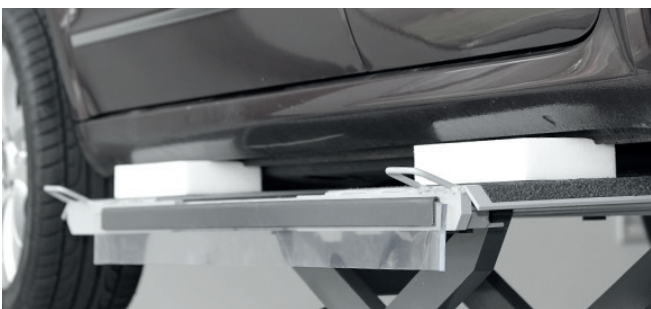
rubber pads

PAGE 3



rubber blocks

PAGE 19



polymer blocks

PAGE 25



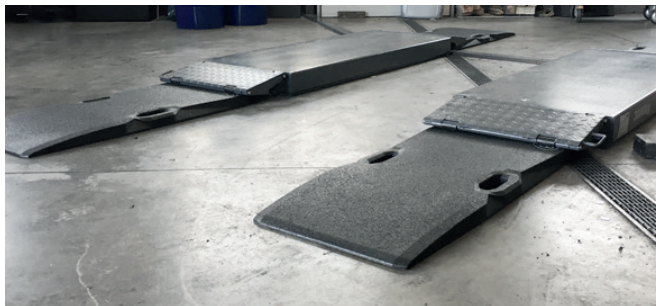
rubber plates

PAGE 27



special equipment

PAGE 30



rubber ramps

PAGE 31



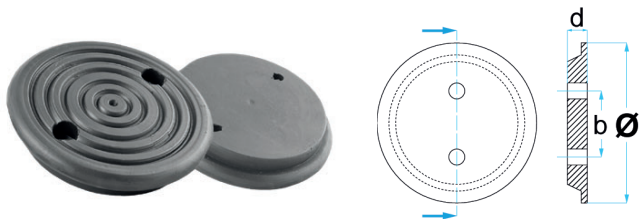
filler plates

PAGE 32

**böck** automotive  
lifting  
solutions

© Böck GmbH | We reserve the right to change prices and product specifications without prior notification. The catalogue is designed by Böck GmbH, all images in this print media are subject to copyright and can only be used with permission.

Technical changes and errors expected.

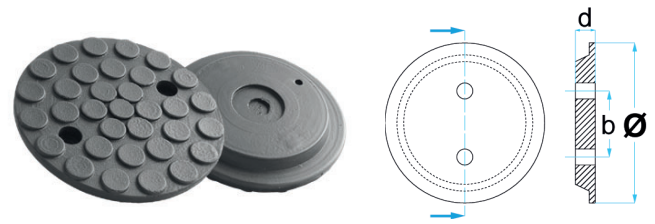


015

Ø	a	b	d	e
115 mm	-	73 mm	20 mm	-

0,25 kg

suitable for:  
J.A.B. BECKER

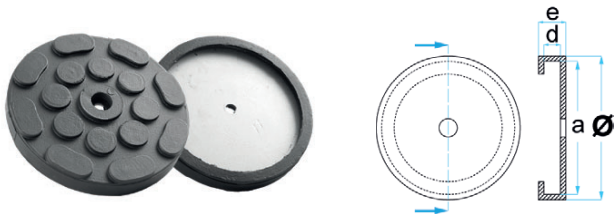


024481

Ø	a	b	d	e
120 mm	-	75 mm	21 mm	-

0,15 kg

suitable for:  
J.A.B. BECKER

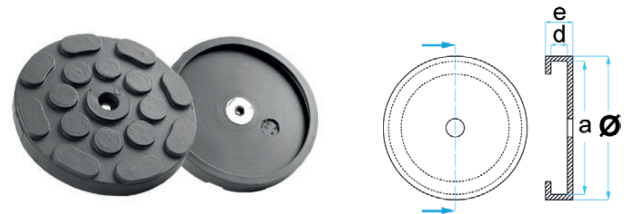


169100MET

Ø	a	b	d	e
120 mm	110 mm	-	4 mm	16 mm

0,29 kg with steel plate

suitable for:  
J.A.B. BECKER / ATH-HEINL / HOFMANN /  
JOHN BEAN / HERRMANN / AUTOP-STENHOJ /  
FINKBEINER / KIRSTEN / WEBER

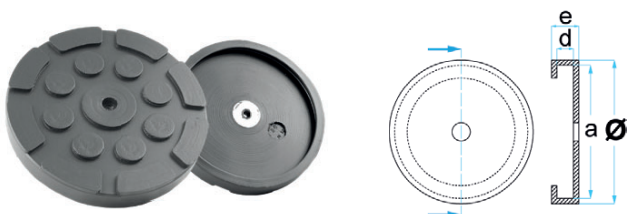


169100

Ø	a	b	d	e
120 mm	110 mm	-	4 mm	16 mm

0,15 kg

suitable for:  
J.A.B. BECKER / ATH-HEINL / HOFMANN /  
JOHN BEAN / HERRMANN / AUTOP-STENHOJ /  
FINKBEINER / KIRSTEN / WEBER

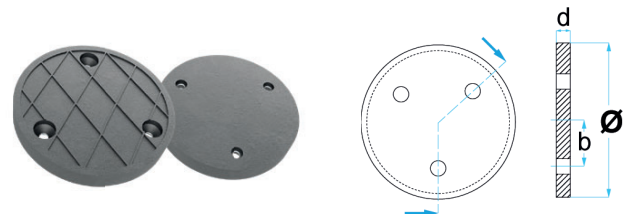


169130

Ø	a	b	d	e
130 mm	122 mm	-	5 mm	17 mm

0,20 kg

suitable for:  
HERRMANN



GT-BTHZ.120.15

Ø	a	b	d	e
120 mm	-	45 mm	15 mm	-

0,35 kg with steel plate

suitable for:  
J.A.B. BECKER / ZIPPO



**335022**

Ø	a	b	d	e
140 mm	132 mm	-	4 mm	17 mm

0,20 kg

suitable for:  
HOFMANN



**335160-GS5.0**

Ø	a	b	d	e
160 mm	148 mm	-	6 mm	24 mm

0,38 kg

suitable for:  
HOFMANN



**336000**

a	b	d	l	w
154 mm	82 mm	10 mm	162 mm	92 mm

0,24 kg

suitable for:  
HOFMANN / ROMEICO / HYMO



**01103031**

Ø	a	b	d	e
125 mm	120 mm	90 mm	24 mm	-

0,30 kg with steel plate

suitable for:  
NUSSBAUM / ATT / AMI / AMMCO / FORCE /  
WHEELTRONIC / PHOENIX / SNAP-ON

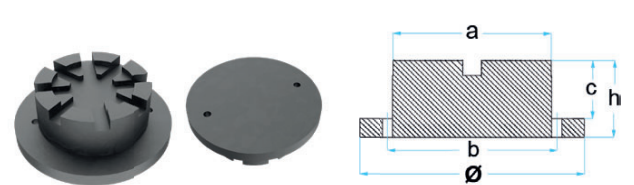


**SOVW-NUS**

Ø	a	b	d	e
132 mm	121 mm	-	8 mm	24 mm

0,23 kg

suitable for:  
NUSSBAUM

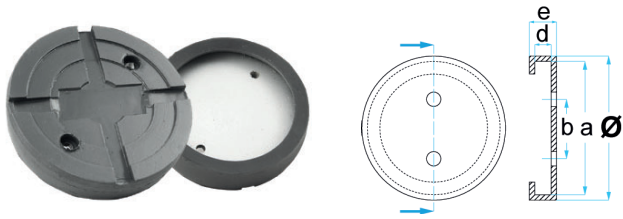


**GPROD-NUS**

Ø	a	b	c	h
120 mm	85 mm	90 mm	31 mm	41 mm

0,35 kg

suitable for:  
NUSSBAUM

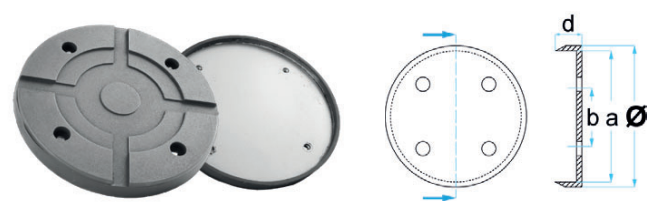


**GK125/120**

Ø	a	b	d	e
127 mm	120 mm	83 mm	9 mm	28 mm

0,35 kg with steel plate

suitable for:  
SLIFT / IME



**GK155/16**

Ø	a	b	d	e
155 mm	153 mm	85 mm	16 mm	-

0,38 kg with steel plate

suitable for:  
SLIFT / IME



**GK122/12**

Ø	a	b	d	e
122 mm	116 mm	80 mm	12 mm	-

0,15 kg with steel plate

suitable for:  
SLIFT / IME

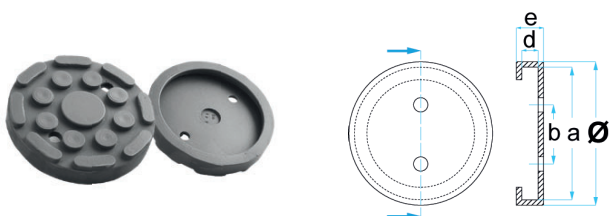


**36001.04.04.001**

Ø	a	b	d	e
120 mm	112 mm	83 mm	5 mm	18 mm

0,15 kg

suitable for:  
MAHA / SLIFT / AUTOMASTER



**115172024**

Ø	a	b	d	e
100 mm	90 mm	63 mm	5 mm	17,5 mm

0,10 kg

suitable for:  
MAHA / SLIFT



**17202301MET**

Ø	a	b	d	e
120 mm	113 mm	83 mm	8 mm	22 mm

0,26 kg with steel plate

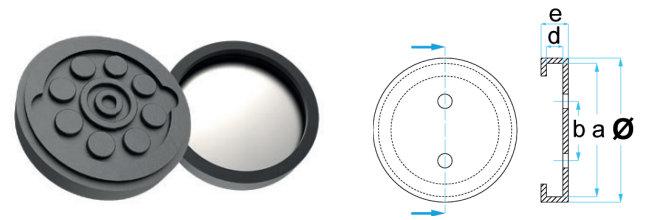
suitable for:  
MAHA



17202301

Ø	a	b	d	e
120 mm	113 mm	83 mm	8 mm	22 mm

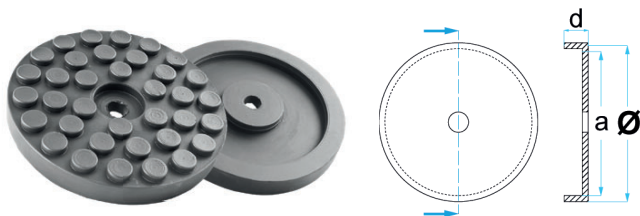
kg 0,15 kg

suitable for:  
MAHA

17202301-EMB

Ø	a	b	d	e
120 mm	110 mm	-	8 mm	22 mm

kg 0,15 kg with steelplate, without screw holes, to pull over

suitable for:  
MAHA

121KP6Z215

Ø	a	b	d	e
144 mm	117 mm	-	20 mm	-

kg 0,30 kg

suitable for:  
RAVAGLIOLI

047021040

Ø	a	b	d	e
145 mm	-	45 mm	26 mm	-

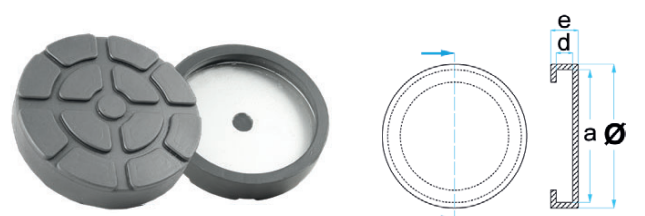
kg 0,30 kg

suitable for:  
RAVAGLIOLI / OMER

04640577

Ø	a	b	d	e
120 mm	-	36 mm	27 mm	-

kg 0,20 kg

suitable for:  
RAVAGLIOLI / SPACE / OMER

046405772MET

Ø	a	b	d	e
123 mm	110 mm	-	10 mm	25 mm

kg 0,30 kg with steel plate

suitable for:  
RAVAGLIOLI / WERTHER / SPACE / ORLANDINI  
/ OMER

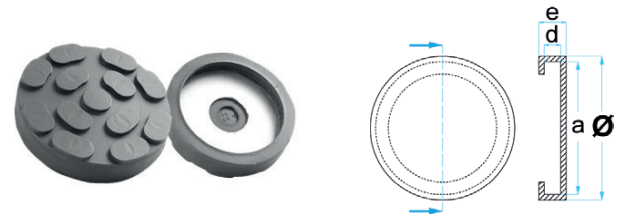


046405772

Ø	a	b	d	e
123 mm	110 mm	-	10 mm	25 mm

0,15 kg

suitable for:  
RAVAGLIOLI / WERTHER / SPACE / ORLANDINI  
/ OMER



047021850MET

Ø	a	b	d	e
100 mm	87 mm	-	9 mm	22 mm

0,17 kg with steel plate

suitable for:  
RAVAGLIOLI / SIRIO / SPACE / SUPREME /  
MOLNAR

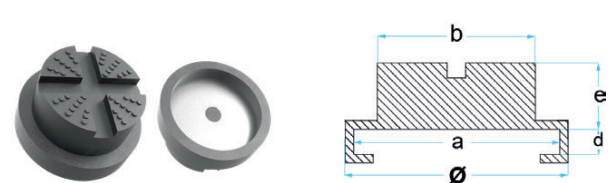


047021850

Ø	a	b	d	e
100 mm	87 mm	-	9 mm	22 mm

0,10 kg

suitable for:  
RAVAGLIOLI / SIRIO / SPACE / SUPREME /  
MOLNAR



GT-359.B8X

Ø	a	b	d	e
100 mm	87 mm	-	9 mm	38 mm

0,30 kg with steel plate

suitable for:  
RAVAGLIOLI / SIRIO / SPACE / SUPREME /  
MOLNAR

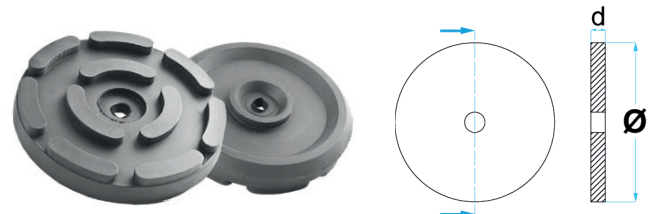


047021041

Ø	a	b	d	e
148 mm	133 mm	-	10 mm	25 mm

0,26 kg

suitable for:  
RAVAGLIOLI



OMCN-140

Ø	a	b	d	e
143 mm	-	-	27 mm	-

0,35 kg

suitable for:  
OMCN / RAVAGLIOLI

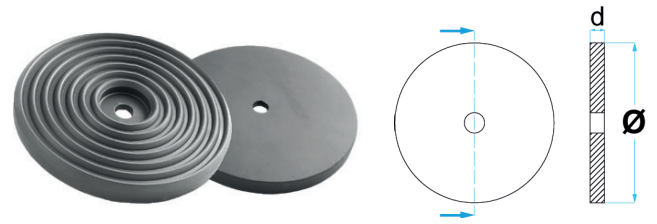


## OMCN-140-002

Ø	a	b	d	e
140 mm	-	42 mm	29 mm	-

0,31 kg

suitable for:  
OMCN

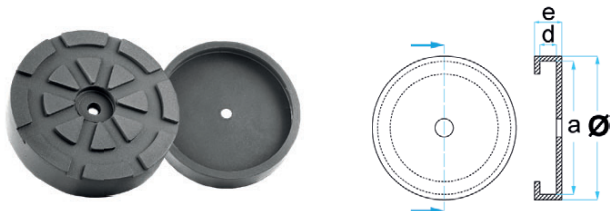


## WERTHER002

Ø	a	b	d	e
140 mm	-	-	15 mm	-

0,25 kg

suitable for:  
WERTHER / OMA / BRADBURY / TECALEMIT /  
AUTEC

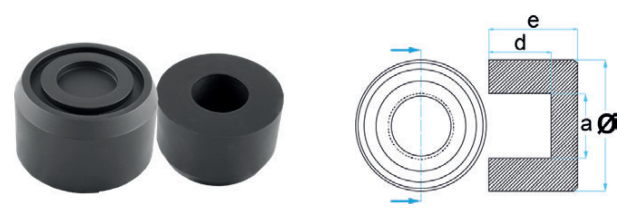


## WERTHER001-B1007

Ø	a	b	d	e
122 mm	114 mm	-	10 mm	28 mm

0,23 kg

suitable for:  
WERTHER / OMA / TECALEMIT / ITALGARAGE  
/ FINKBEINER

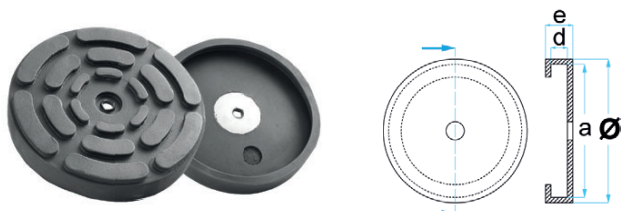


## WERTHER001-B2653

Ø	a	b	d	e
85 mm	39 mm	-	29 mm	50 mm

0,31 kg

suitable for:  
WERTHER

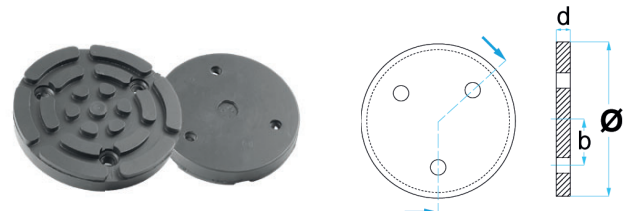


## 15.87.425

Ø	a	b	d	e
127 mm	123 mm	-	8 mm	22 mm

0,15 kg

suitable for:  
CONSUL / ZIPPO / FOG



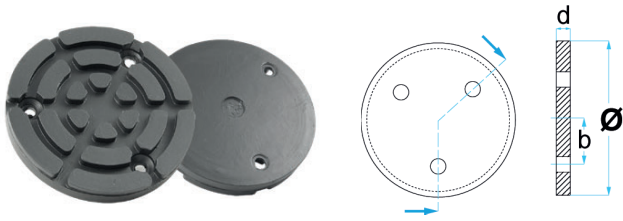
## 15.87.410

Ø	a	b	d	e
100 mm	-	35 mm	17mm	-

0,24 kg with steel plate

suitable for:  
ZIPPO / GRUSE



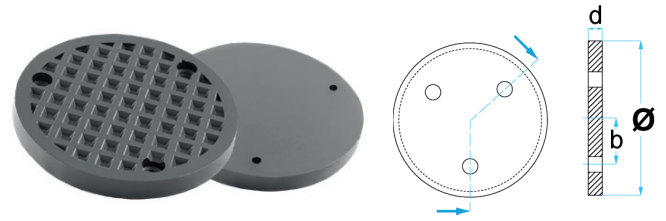


15.87.420

Ø	a	b	d	e
120 mm	-	44 mm	16 mm	-

0,28 kg with steel plate

suitable for:  
ZIPPO



15.87.450

Ø	a	b	d	e
149 mm	-	60 mm	15 mm	-

0,75 kg with steel plate

suitable for:  
ZIPPO

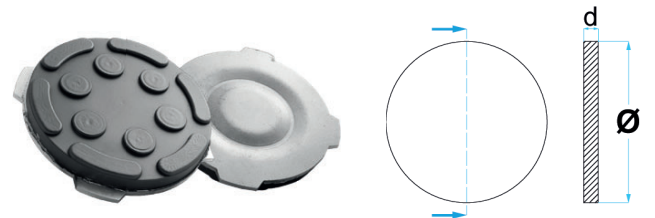


15.87.453

Ø	a	b	d	e
153 mm	-	60 mm	32 mm	-

0,75 kg with steel plate

suitable for:  
ZIPPO



02-CONSUL

Ø	a	b	d	e
138 mm	-	-	18 mm	-

0,75 kg with steel plate

suitable for:  
CONSUL

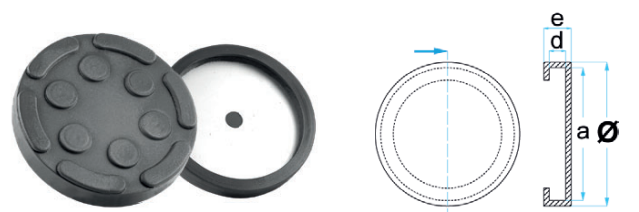


02-CONSUL-01-CA

Ø	a	b	d	e
135 mm	35 mm	40 mm	-	-

1,50 kg rotating plate incl. changeable rubber pad

suitable for:  
CONSUL / ZIPPO / BEISSBARTH

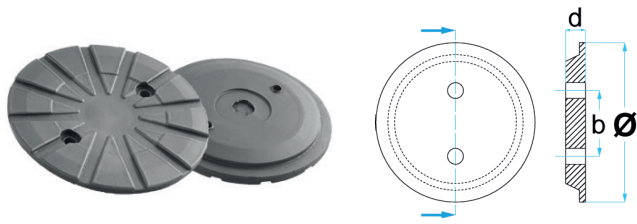


02-CONSUL-01-GTRP

Ø	a	b	d	e
135 mm	126 mm	-	8 mm	10 mm

0,30 kg with steel plate

suitable for:  
CONSUL / ZIPPO / BEISSBARTH / HERRMANN

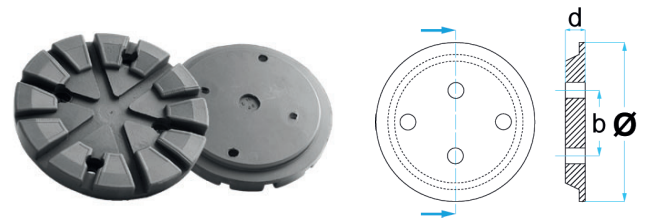


664202

Ø	a	b	d	e
121 mm	-	65 mm	9 mm	-

0,20 kg with steel plate

suitable for:  
AUTOP-STENHOJ / FOG / CAR-O-LINER

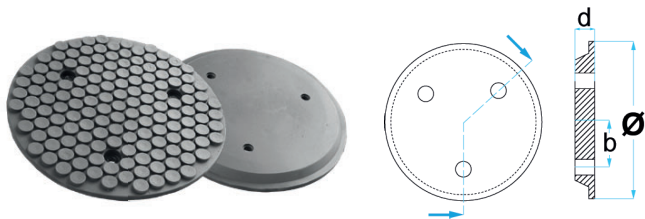


664000

Ø	a	b	d	e
122 mm	-	65 / 88 mm	18 mm	-

0,18 kg

suitable for:  
AUTOP-STENHOJ / NUSSBAUM / FOG / CAR-O-LINER

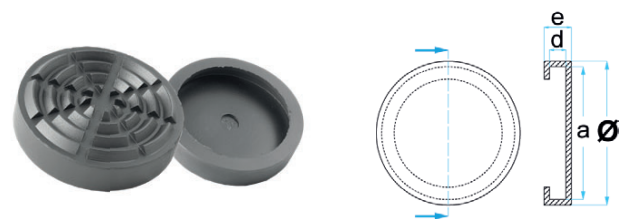


664160

Ø	a	b	d	e
158 mm	-	47 mm	11 mm	-

0,40 kg with steel plate

suitable for:  
AUTOP-STENHOJ



SK2030-105

Ø	a	b	d	e
109 mm	100 mm	-	10 mm	26 mm

0,15 kg

suitable for:  
KONI / BRADBURY / HERKULES / TECALEMIT / MAJORLIFT



SK2030-124

Ø	a	b	d	e
124 mm	118 mm	-	5 mm	17 mm

0,13 kg

suitable for:  
KONI

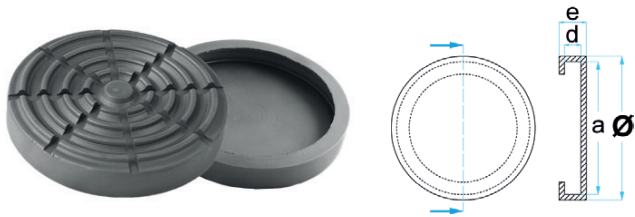


SK2030-160

Ø	a	b	d	e
160 mm	153 mm	-	10 mm	28 mm

0,33 kg

suitable for:  
KONI / ROMEICO / CAR-O-LINER / HH-INTERTECH / BEISSBARTH / FOG / MONDOLFO FERRO

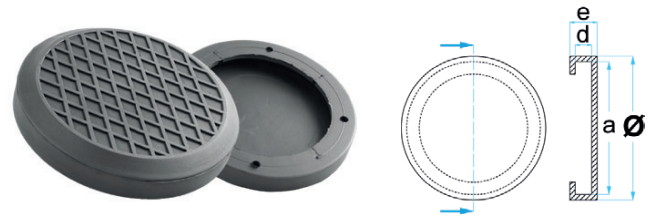


**ROMEICO124**

Ø	a	b	d	e
124 mm	116 mm	-	10 mm	22 mm

0,15 kg

suitable for:  
ROMEICO / HH-INTERTECH / CORGHI / GRAZIA

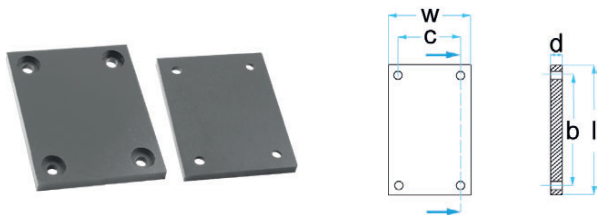


**ROTARY**

Ø	a	b	d	e
123 mm	112 mm	-	8 mm	20 mm

0,17 kg

suitable for:  
ROTARY / HERRMANN / ATH-HEINL

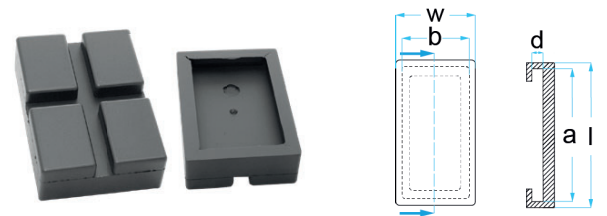


**ROTARY-FJRP**

b	c	d	l	w
80 mm	56 mm	8 mm	104 mm	82 mm

0,12 kg

suitable for:  
ROTARY



**ROTARY-PU7352**

a	b	d	l	w
116 mm	80 mm	9 mm	128 mm	89 mm

0,12 kg

suitable for:  
ROTARY



**ZAV-41-113**

Ø	a	b	d	e
128 mm	112 mm	-	8 mm	22 mm

0,20 kg

suitable for:  
EUROLIFT / ORLANDINI

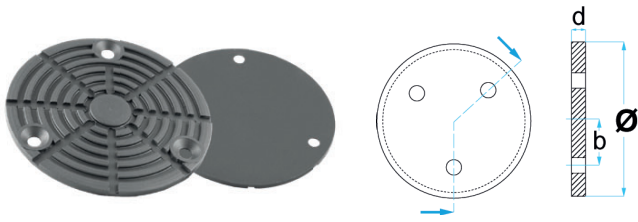


**IST0720300**

Ø	a	b	d	e
155 mm	147 mm	-	6 mm	24 mm

0,27 kg

suitable for:  
ISTOBAL / VELYEN

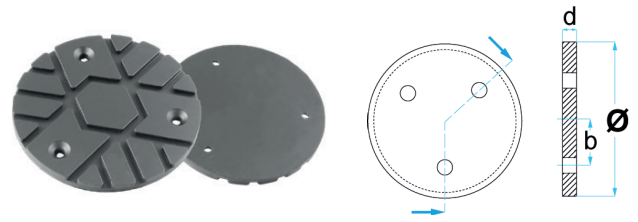


**IST1304800**

Ø	a	b	d	e
145 mm	-	60 mm	5 mm	-

0,10 kg

suitable for:  
ISTOBAL / VELYEN / SOURIAU



**VEL001**

Ø	a	b	d	e
121 mm	-	46 mm	7 mm	-

0,10 kg

suitable for:  
ISTOBAL / VELYEN



**LAUNCH120**

Ø	a	b	d	e
120 mm	108 mm	69 mm	32 mm	-

0,30 kg

suitable for:  
LAUNCH / EVER ETERNAL / TWIN BUSCH / RP  
TOOLS / ATH-HEINL / LINCOS / many chinese  
manufactured lifts

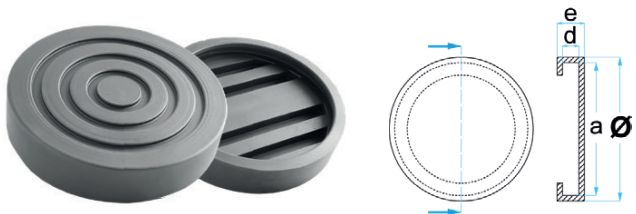


**COR001483**

Ø	a	b	d	e
126 mm	120 mm	-	10 mm	24 mm

0,21 kg

suitable for:  
CORGHI / HPA - FAIP / MONDOLFO FERRO /  
ORLANDINI / SICE



**AGM139**

Ø	a	b	d	e
139 mm	130 mm	-	8 mm	28 mm

0,30 kg

suitable for:  
AGM / CORGHI / FOG / SICE / HPA - FAIP /  
AUTEC / MOLNAR



**CASCOS001**

Ø	a	b	d	e
138 mm	130 mm	-	8 mm	25 mm

0,26 kg

suitable for:  
CASCOS / VILVER



**BRADBURY001**

Ø	a	b	d	e
158 mm	148 mm	-	11 mm	27 mm

0,37 kg

suitable for:  
BRADBURY / HH-INTERTECH

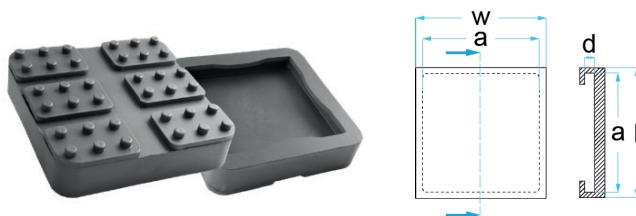


**BRADBURY002**

Ø	a	b	d	e
150 mm	142 mm	-	7 mm	22 mm

0,21 kg

suitable for:  
BRADBURY

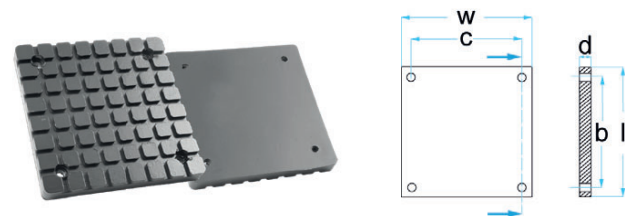


**RANGER001**

a	b	d	l	w
126 mm	-	13 mm	143 mm	143 mm

0,50 kg

suitable for:  
BENDPAK / RANGER / DANMAR



**BENDPAK002**

b	c	d	l	w
88 mm	88 mm	12 mm	119 mm	119 mm

0,20 kg

suitable for:  
BENDPAK / DAYTONA

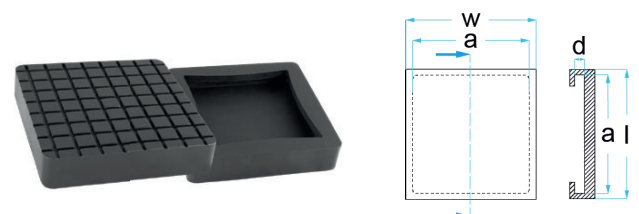


**BENDPAK003**

Ø	a	b	d	e
127 mm	111 mm	-	11 mm	26 mm

0,26 kg

suitable for:  
BENDPAK

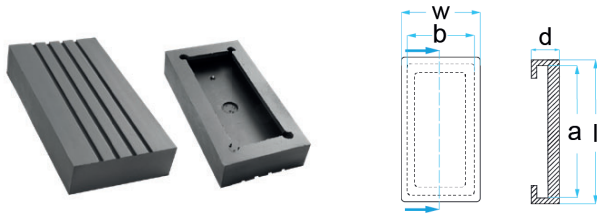


**BENDPAK004**

a	b	d	l	w
126 mm	-	13 mm	143 mm	143 mm

0,50 kg

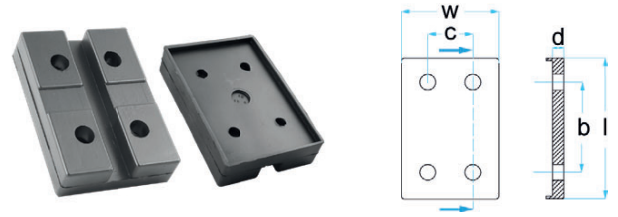
suitable for:  
BENDPAK / RANGER / DANMAR



LAYCOCK001

a	b	d	l	w
140 mm	70 mm	28 mm	150 mm	80 mm
kg 0,27 kg				

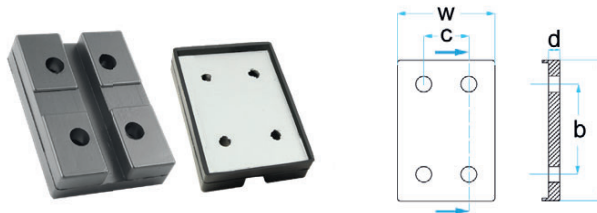
suitable for:  
LAYCOCK / KISMET



SILENT001

b	c	d	l	w
60 mm	40 mm	20 mm	118 mm	83 mm
kg 0,27 kg				

suitable for:  
BRADBURY / DUNLOP / SILENT / many chinese manufactured lifts



SILENT001MET

b	c	d	l	w
60 mm	40 mm	20 mm	118 mm	83 mm
kg 0,35 kg with steel plate				

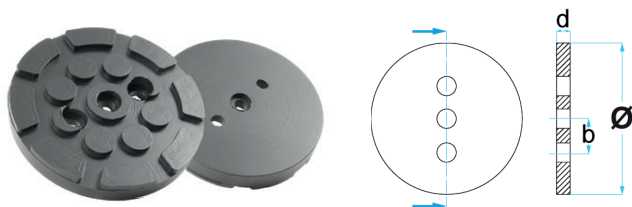
suitable for:  
BRADBURY / DUNLOP / SILENT / many chinese manufactured lifts



SUM001

∅	a	b	d	e
140 mm	134 mm	118 mm	20 mm	88 mm
kg 0,29 kg				

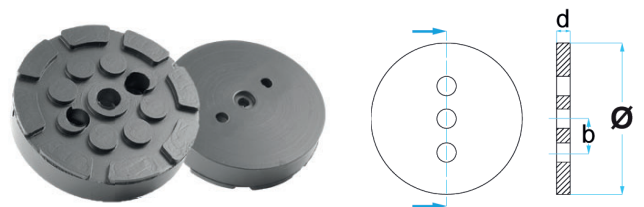
suitable for:  
SUMMIT



HPOW001

∅	a	b	d	e
120 mm	-	25 mm	17 mm	-
kg 0,21 kg				

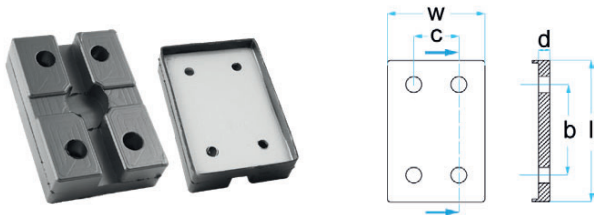
suitable for:  
POWERREX / HESHBON / AUTOP-STENHOJ / many chinese manufactured lifts



HPOW002

∅	a	b	d	e
120 mm	-	25 mm	25 mm	-
kg 0,32 kg				

suitable for:  
POWERREX / HESHBON / ROTARY / JIG / QUALITY LIFTS / many chinese manufactured lifts

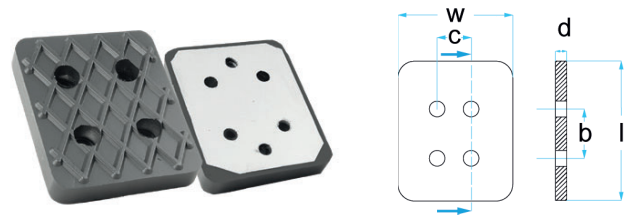


**BISHAMON001**

b	c	d	l	w
74 mm	40 mm	20 mm	116 mm	80 mm

0,28 kg with steel plate

suitable for:  
BISHAMON / CHIANG LURN / CARLEO

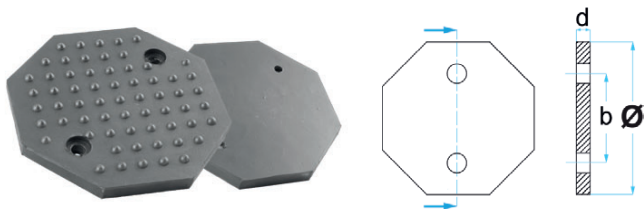


**BISHAMON002**

b	c	d	l	w
45 mm	40 mm	16 mm	112 mm	92 mm

0,31 kg with steel plate

suitable for:  
BISHAMON / BENWIL

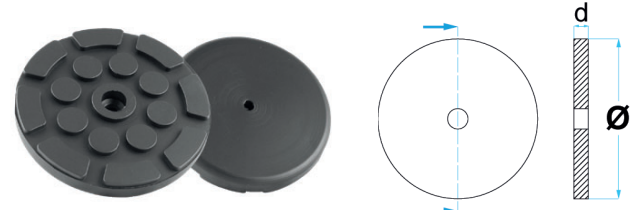


**GTCN001**

Ø	a	b	d	e
125 mm	-	90 mm	10 mm	-

0,17 kg

suitable for:  
AUTOMOTECH / EVER ETERNAL / TWIN BUSCH  
/ HANMECSON / FORWARD / many chinese  
manufactured lifts

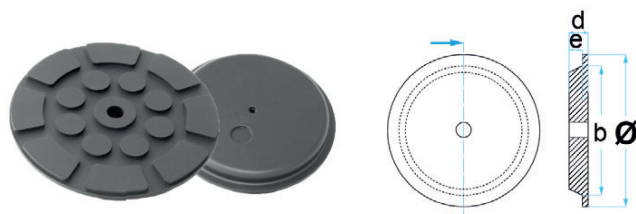


**GTCN002**

Ø	a	b	d	e
120 mm	-	-	17 mm	-

0,21 kg

suitable for:  
AUTOP-STENHOJ / ATH-HEINL / HESHBON /  
TWIN BUSCH / LINCOS / PROVAC / KRÖMER /  
AUTOMASTER / many chinese manufactured lifts

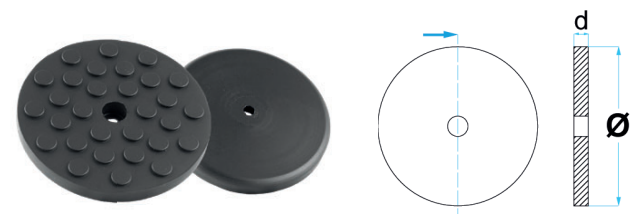


**GTCN002-RNG**

Ø	a	b	d	e
132 mm	-	119 mm	14 mm	9 mm

0,21 kg

suitable for:  
many chinese manufactured lifts

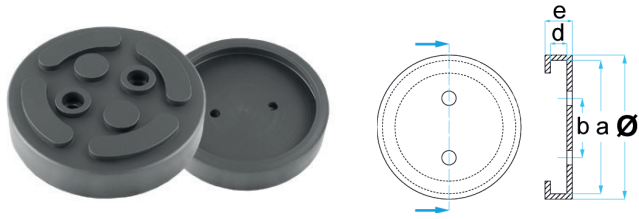


**GTCN003**

Ø	a	b	d	e
120 mm	-	-	15 mm	-

0,21 kg

suitable for:  
FOG / DUNLOP / many chinese manufactured  
lifts

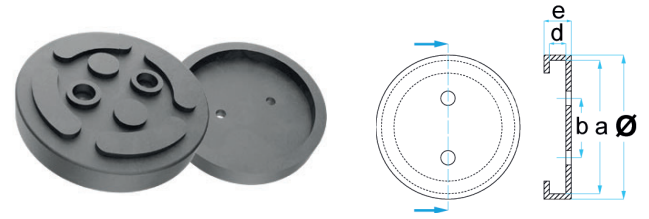


GTCN004

Ø	a	b	d	e
140 mm	125 mm	50 mm	10 mm	32 mm

0,40 kg

suitable for:  
NORDIC LIFT / TWIN BUSCH / many chinese manufactured lifts

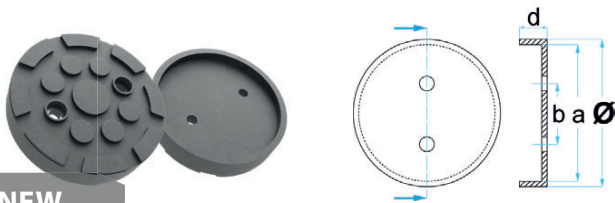


GTCN009

Ø	a	b	d	e
140 mm	120 mm	50 mm	10 mm	32 mm

0,40 kg

suitable for:  
EVER ETERNAL / NORDIC LIFT / TWIN BUSCH / many chinese manufactured lifts



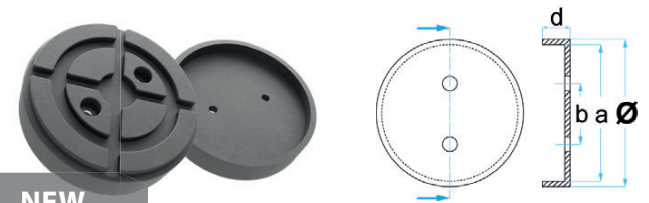
NEW

GTCN010

Ø	a	b	d	e
120 mm	108 mm	60 mm	23 mm	-

0,22 kg

suitable for:  
WEBER / many chinese manufactured lifts



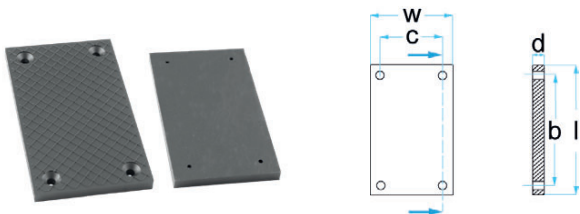
NEW

GTCN011

Ø	a	b	d	e
140 mm	128 mm	56 mm	34 mm	-

0,43 kg

suitable for:  
WEBER / many chinese manufactured lifts

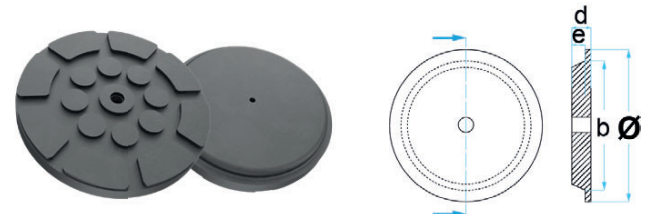


GTCN005

b	c	d	l	w
104 mm	50 mm	9 mm	128 mm	74 mm

0,21 kg

suitable for:  
EVER ETERNAL / LAUNCH / TWIN BUSCH / many chinese manufactured lifts



GTCN007-RNG

Ø	a	b	d	e
160 mm	-	150 mm	25,5 mm	9 mm

0,60 kg

suitable for:



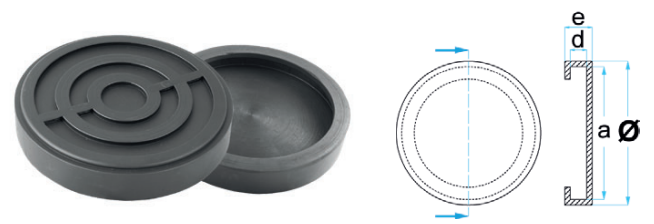


**GTCN008**

Ø	a	b	d	e
140 mm	-	-	21 mm	-

0,35 kg

suitable for:  
TWIN BUSCH / ATH-HEINL / many chinese  
manufactured lifts

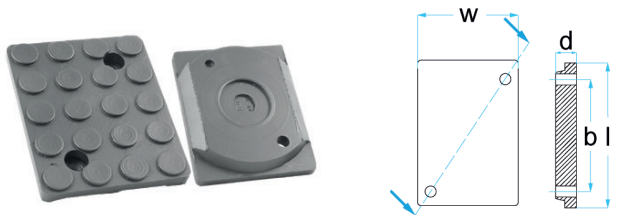


**NORDLIFT17200**

Ø	a	b	d	e
127 mm	115 mm	-	7 mm	23 mm

0,17 kg

suitable for:  
NORDLIFT

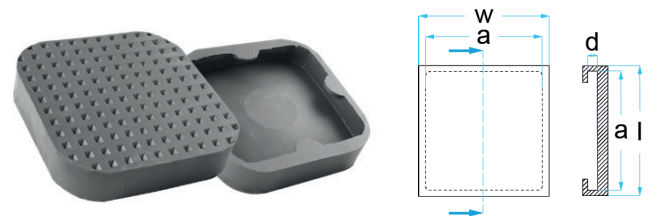


**149950**

b	c	d	l	w
73 mm	-	18 mm	100 mm	81 mm

0,15 kg

suitable for:  
J.A.B. BECKER



**100100**

a	b	d	l	w
108 mm	-	23 mm	120 mm	120 mm

0,18 kg

suitable for:  
COMPAC

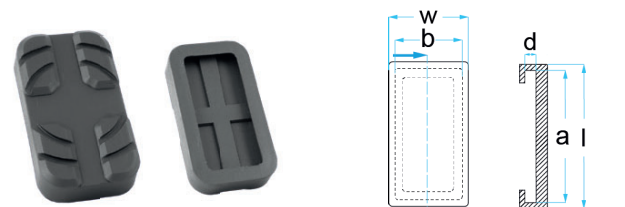


**AC-GS1**

Ø	a	b	d	e
110 mm	-	-	20 mm	-

0,17 kg

suitable for:  
AC HYDRAULIC



**AC-GS2**

a	b	d	l	w
100 mm	50 mm	10 mm	112 mm	61 mm

0,15 kg

suitable for:  
AC HYDRAULIC/ AUTOP-STENHOJ/ MAHA/  
ROTARY

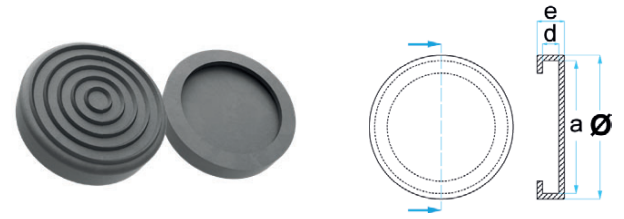


## COL001

Ø	a	b	d	e
89 mm	80 mm	-	17 mm	-

 0,10 kg

suitable for:  
CAR-O-LINER



## GT-VIGK.115.27

Ø	a	b	d	e
115 mm	100 mm	-	5 mm	27 mm


 0,25 kg

suitable for:  
VILVER



## GT-VILN.145.30

Ø	a	b	d	e
145 mm	130 mm	-	8 mm	31 mm

 0,40 kg

suitable for:  
VILVER

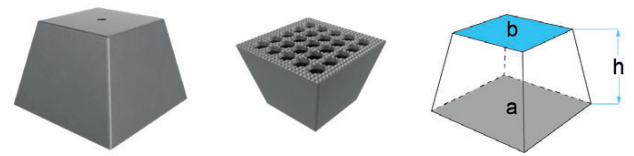


165046

a	b	h
150 × 150 mm	100 × 100 mm	140 mm

2,30 kg

suitable for:  
J.A.B. BECKER / AUTOP-STENHOJ / universal use



165042

a	b	h
150 × 150 mm	104 × 104 mm	100 mm

1,75 kg

suitable for:  
J.A.B. BECKER / AUTOP-STENHOJ / universal use

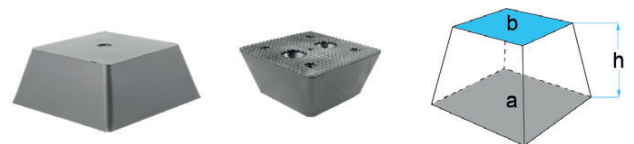


165030

a	b	h
150 × 150 mm	110 × 110 mm	70 mm

1,40 kg

suitable for:  
J.A.B. BECKER / AUTOP-STENHOJ / universal use

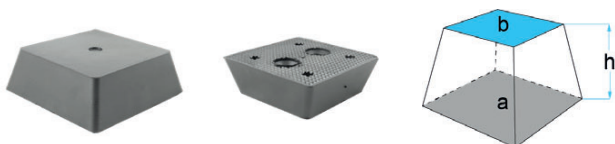


165036

a	b	h
150 × 150 mm	115 × 115 mm	60 mm

1,20 kg

suitable for:  
J.A.B. BECKER / AUTOP-STENHOJ / universal use

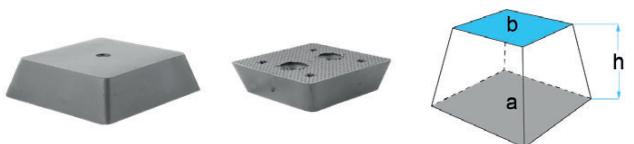


165031

a	b	h
150 × 150 mm	120 × 120 mm	50 mm

1,10 kg

suitable for:  
J.A.B. BECKER / AUTOP-STENHOJ / universal use

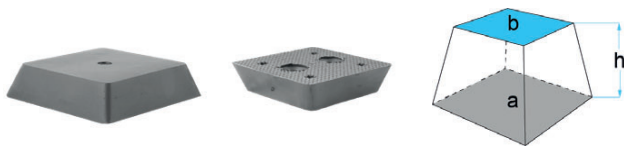


165034

a	b	h
150 × 150 mm	128 × 128 mm	40 mm

0,90 kg

suitable for:  
J.A.B. BECKER / AUTOP-STENHOJ / universal use



165037

a	b	h
150 × 150 mm	135 × 135 mm	30 mm

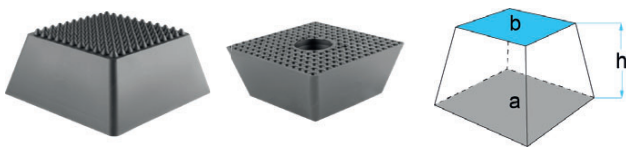
0,72 kg

 suitable for:  
 J.A.B. BECKER / AUTOP-STENHOJ / universal use


165038

a	b	h
150 × 150 mm	140 × 140 mm	20 mm

0,47 kg

 suitable for:  
 J.A.B. BECKER / AUTOP-STENHOJ / universal use


23000251

a	b	h
150 × 150 mm	115 × 115 mm	60 mm

1,20 kg

 suitable for:  
 MAHA / universal use


165040

a	b	h
180 × 100 mm	-	100 mm

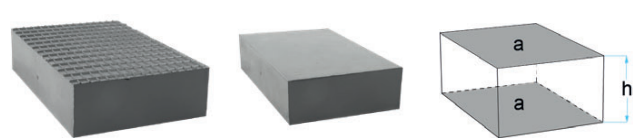
2,35 kg

 suitable for:  
 universal use


165033H

a	b	h
222 × 137 mm	-	85 mm

2,75 kg with wooden core

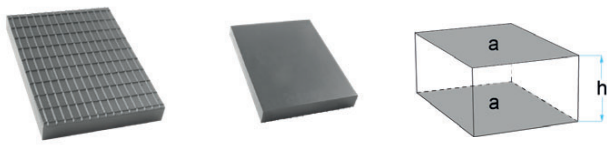
 suitable for:  
 universal use


165032

a	b	h
216 × 136 mm	-	50 mm

1,80 kg

 suitable for:  
 universal use



165035

a	b	h
160 × 120 mm	-	20 mm
kg 0,60 kg		

suitable for:  
J.A.B. BECKER / AUTOP-STENHOJ / universal use



GK12/8

a	b	h
120 × 120 mm	100 × 100 mm	80 mm
kg 1,10 kg		

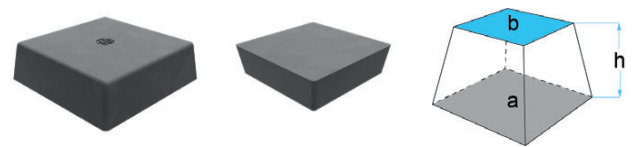
suitable for:  
SLIFT / IME / universal use



GK12/4

a	b	h
120 × 120 mm	102 × 102 mm	40 mm
kg 0,55 kg		

suitable for:  
SLIFT / IME / universal use



MAG120/35

a	b	h
120 × 120 mm	110 × 110 mm	35 mm
kg 0,75 kg with magnet		

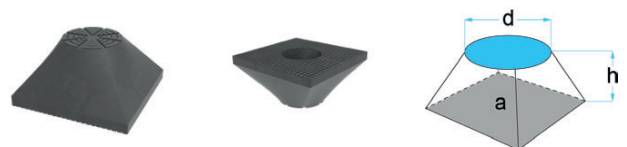
suitable for:  
universal use



13510030-RU

a	b	h
135 × 135 mm	-	42 mm
kg 0,60 kg for electric vehicles		

suitable for:  
Tesla Model 3 / Tesla Model Y / universal use



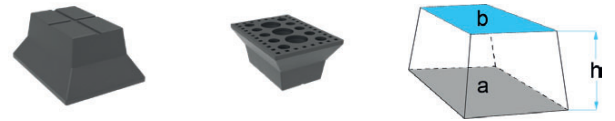
EV-040.XOP

a	b	h
120 × 120 mm	-	60 mm
kg 0,65 kg for electric vehicles		

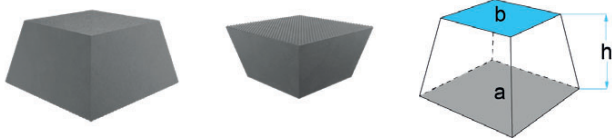
suitable for:  
Tesla Y / universal use



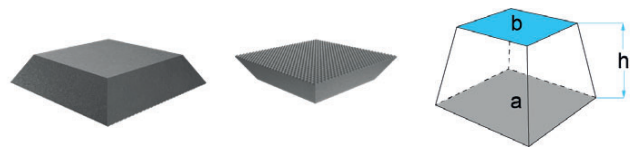
EV-120.FIA		
a	b	h
140 × 100mm	100 × 60 mm	120 mm
1,05 kg for electric vehicles		
suitable for: Fiat 500e / Volvo CX90 / universal use		



EV-060.IDT		
a	b	h
140 × 100mm	100 × 60 mm	60 mm
0,60 kg for most electric vehicles		
suitable for: universal use		



13510070		
a	b	h
135 × 135 mm	100 × 100 mm	70 mm
1,52 kg especially for BMW cars		
suitable for: RAVAGLIOLI / universal use		



13510030		
a	b	h
135 × 135 mm	100 × 100 mm	30 mm
0,62 kg especially for BMW cars		
suitable for: RAVAGLIOLI / universal use		



GK16/9		
a	b	h
160 × 120 mm	120 × 83 mm	90 mm
1,48 kg		
suitable for: universal use		



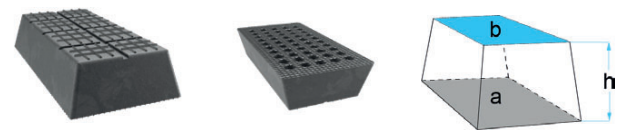
316930		
a	b	h
120 × 100 mm	-	50 mm
0,55 kg		
suitable for: MAHA / HOFMANN / universal use		



316930-NU

a	b	h
120 × 100 mm	-	50 mm
kg 0,55 kg		

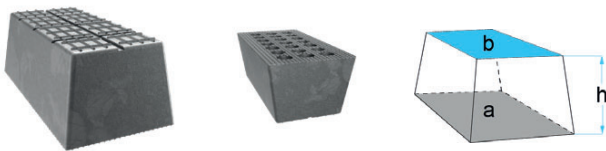
suitable for:  
MAHA / universal use



38.31.829

a	b	h
200 × 100 mm	180 × 80 mm	40 mm
kg 0,80 kg		

suitable for:  
ZIPPO / MAJORLIFT / universal use



38.31.830

a	b	h
200 × 100 mm	180 × 80 mm	70 mm
kg 1,40 kg		

suitable for:  
ZIPPO / MAJORLIFT / universal use



38.31.831

a	b	h
230 × 140 mm	220 × 130 mm	140 mm
kg 4,25 kg		

suitable for:  
ZIPPO / MAJORLIFT / universal use



38.31.831OLD

a	b	h
230 × 140 mm	215 × 138 mm	135 mm
kg 4,60 kg with wooden core		

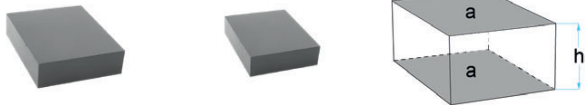
suitable for:  
ZIPPO / universal use



80100012080

a	b	h
120 × 100 mm	-	80 mm
kg 0,95 kg		

suitable for:  
HERKULES



30100012030

a


b

h

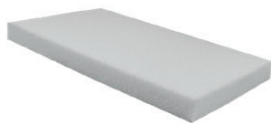
120 × 100 mm

-

30 mm

 0,45 kgsuitable for:  
HERKULES



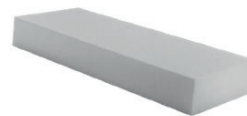


### PE-900-KGK-20

250 × 150 × 20 mm +/- 5 mm

 0,11 kg

suitable for:  
universal use on scissor lifts



### PE-900WEISS/KLEIN

340 × 132 × 50 mm +/- 5 mm

 0,35 kg

suitable for:  
universal use on scissor lifts



### PE-900WEISS/GROSS

340 × 150 × 100 mm +/- 5 mm

 0,75 kg

suitable for:  
universal use on scissor lifts

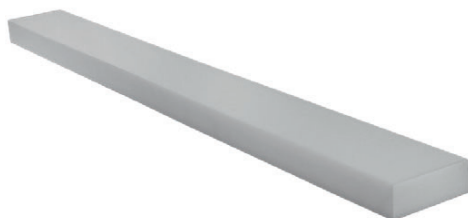


### PE-900-03415.H25

340 × 150 × 25 mm +/- 5 mm

 0,18 kg

suitable for:  
universal use on scissor lifts



### PE-900-SH-49

1355 × 140 × 49 mm +/- 5 mm

 1,45 kg

suitable for:  
universal use on scissor lifts



### PE-900-SH-95

1355 × 140 × 95 mm +/- 5 mm

 2,80 kg

suitable for:  
universal use on scissor lifts



## PB-K03415.H40

340 × 150 × 40 mm +/- 5 mm


 0,20 kg

suitable for:  
universal use on scissor lifts



## PB-K03415.H60

340 × 150 × 60 mm +/- 5 mm


 0,30 kg

suitable for:  
universal use on scissor lifts



## PB-K03415.H80

340 × 150 × 80 mm +/- 5 mm


 0,40 kg

suitable for:  
universal use on scissor lifts



## PB-K15015.H40

1500 × 150 × 40 mm +/- 5 mm

 0,90 kg

suitable for:  
universal use on scissor lifts



## PB-K15015.H60

1500 × 150 × 60 mm +/- 5 mm


 1,30 kg

suitable for:  
universal use on scissor lifts

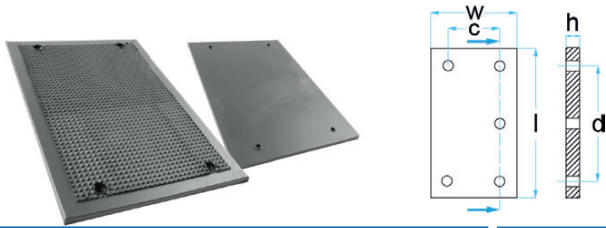


## PB-K15015.H80

1500 × 150 × 80 mm +/- 5 mm

 1,60 kg

suitable for:  
universal use on scissor lifts



165029

c	d	h	l	w
160 mm	320 mm	13 mm	380 mm	260 mm

2,75 kg with steel plate

suitable for:  
J.A.B. BECKER



GK40/2

c	d	h	l	w
240 mm	285 mm	15 mm	400 mm	350 mm

3,30 kg with steelplate

suitable for:  
SLIFT / IME



GK40/12

c	d	h	l	w
240 mm	255 mm	12 mm	400 mm	350 mm

3,10 kg with steelplate

suitable for:  
SLIFT / IME



GK40/35-VG

c	d	h	l	w
260 mm	355 mm	14 mm	400 mm	350 mm

3,60 kg new version, with steel plate

suitable for:  
MAHA

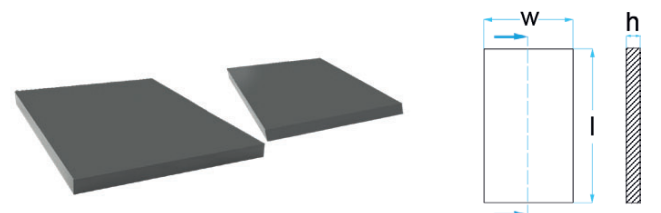


GK53/12

c	d	h	l	w
240 mm	405 mm	12 mm	535 mm	350 mm

4,20 kg with steelplate

suitable for:  
SLIFT / IME



GK34/2

h	l	w
20 mm	336 mm	290 mm

2,35 kg

suitable for:  
SLIFT / IME / universal use

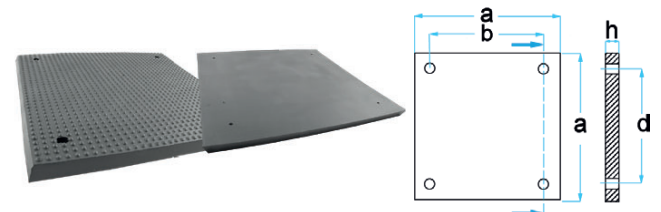


GK39/2

c	d	h	l	w
240 mm	255 mm	20 mm	370 mm	330 mm

2,55 kg

suitable for:  
MAHA / universal use

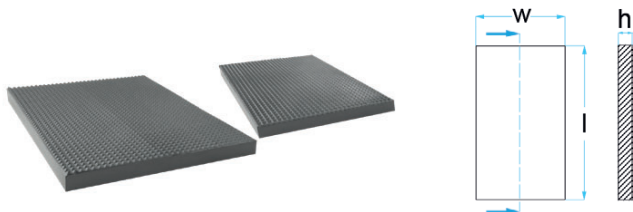


GK45/2

a	b	c	d	h
450 mm	354 mm	-	354 mm	20 mm

5,70 kg

suitable for:  
MAHA / universal use

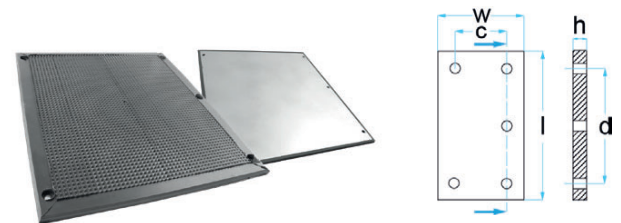


37005/BO

h	l	w
20 mm	270 mm	210 mm

1,35 kg

suitable for:  
AUTOP-STENHOJ



37006/BO

c	d	h	l	w
320 mm	340 mm	12 mm	400 mm	350 mm

3,35 kg with steel plate / incl. screw connection

suitable for:  
AUTOP-STENHOJ

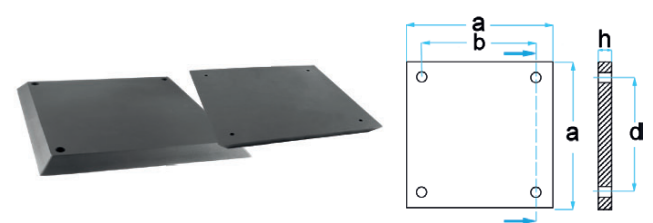


24003

c	d	h	l	w
230 mm	311 mm	40 mm	405 mm	305 mm

6,40 kg with steelplate

suitable for:  
AUTOP-STENHOJ / PERKUTE



235NT08022

a	b	c	d	h
325 mm	257 mm	-	257 mm	20 mm

2,70 kg

suitable for:  
NUSSBAUM



507176

c	d	h	l	w
80 mm	155 mm	12 mm	220 mm	120 mm

0,85 kg with steelplate

suitable for:  
J.A.B. BECKER



970527/BO

h	l	w
30 mm	460 mm	300 mm

5,50 kg

suitable for:  
NUSSBAUM

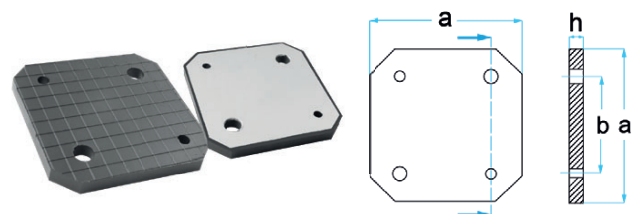


509281

c	d	h	l	w
130 mm	155 mm	12 mm	220 mm	170 mm

1,25 kg with steelplate

suitable for:  
J.A.B. BECKER

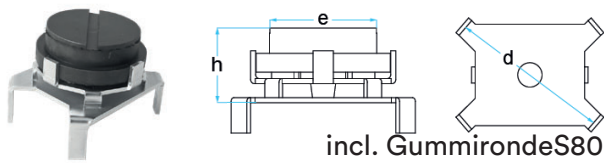


WZ-00931-AO

a	b	c	d	h
150 mm	95 mm	-	-	120 mm

0,75 kg with steelplate

suitable for:  
HYWEMA

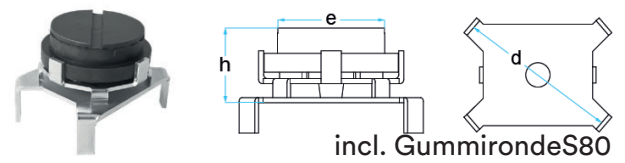


## LIFTADAPTERS80110-130

d	e	h
141 mm	85 mm	58 mm

0,71 kg suitable on rubber pads with:  $\varnothing = 110-130$  mm

suitable for:  
Volvo S80 / universal use

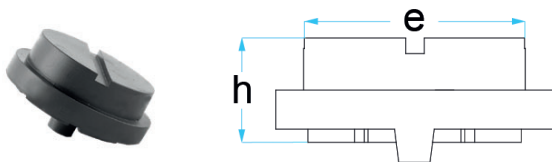


## LIFTADAPTERS80130-160

d	e	h
161 mm	85 mm	58 mm

0,75 kg suitable on rubber pads with:  $\varnothing = 130-160$  mm

suitable for:  
Volvo S80 / universal use

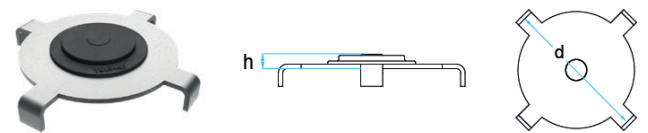


## GUMMIRONDES80

a	e	h
-	85 mm	38 mm

0,30 kg

suitable for:  
LIFTADAPTERS80 / universal use

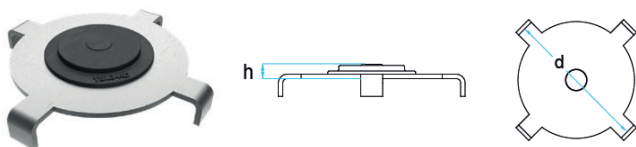


## TSL3-AD-MEDIUM

a	d	h
-	141 mm	11 mm

0,45 kg suitable on rubber pads with:  $\varnothing = 120-140$  mm

suitable for:  
Tesla Model 3 / Tesla Model Y

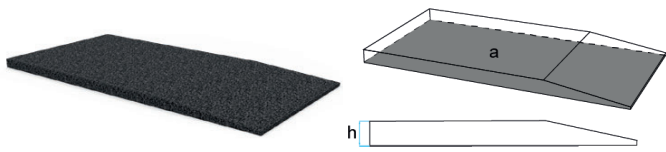


## TSL3-AD-LARGE

a	d	h
-	161 mm	11 mm

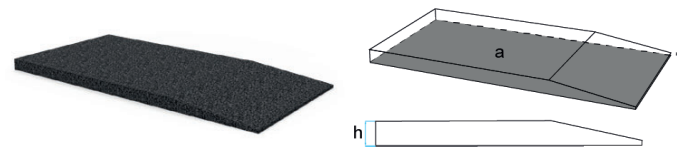
0,50 kg suitable on rubber pads with:  $\varnothing = 140-160$  mm

suitable for:  
Tesla Model 3 / Tesla Model Y



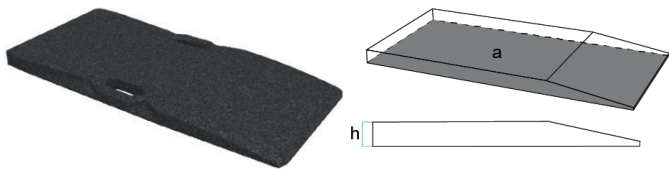
**GG-D1000.H30**

a	h
1000 × 500 mm	30 mm
13,60 kg	
suitable for: scissor lifts and low vehicles	



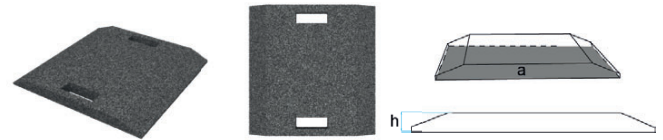
**GG-D1000.H40**

a	h
1000 × 500 mm	40 mm
16,90 kg	
suitable for: scissor lifts and low vehicles	



**GG-D1000.H50**

a	h
1000 × 480 mm	50 mm
22,90 kg	
suitable for: scissor lifts and low vehicles	



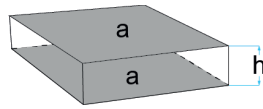
**GG2P-D500H40**

a	h
500 × 500 mm	40 mm
8,40 kg	
suitable for: 2-post lifts	



**GG5X-S108H50**

a	h
500 × 500 mm	50 mm
10,00 kg	
suitable for: portable play detectors / weel alignment systems	



NEW

AP-HEN.500.250.H50-OG

a

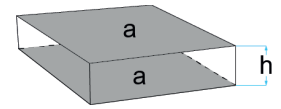
h

500 × 250 mm

50 mm

6,50 kg without handle

suitable for:  
scissor lifts and 4-post lifts with wheel alignment



NEW

AP-HEN.500.250.H50

a

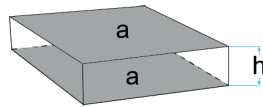
h

500 × 250 mm

50 mm

6,50 kg with handle

suitable for:  
scissor lifts and 4-post lifts with wheel alignment



NEW

AP-HMM.500.370.H50

a

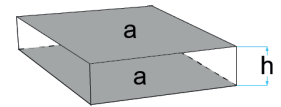
h

500 × 370 mm

50 mm

8,20 kg with handle

suitable for:  
scissor lifts and 4-post lifts with wheel alignment



NEW

AP-HIA.500.500.H50-OG

a

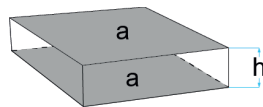
h

500 × 500 mm

50 mm

13,00 kg without handle

suitable for:  
scissor lifts and 4-post lifts with wheel alignment



NEW

AP-HIA.500.500.H50

a

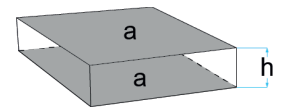
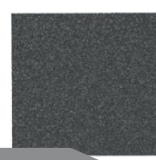
h

500 × 500 mm

50 mm

13,00 kg with handle

suitable for:  
scissor lifts and 4-post lifts with wheel alignment



NEW

AP-HSR.510.470.H50-OG

a

h

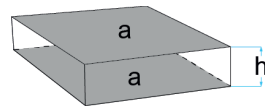
510 × 470 mm

50 mm

11,90 kg without handle

suitable for:  
scissor lifts and 4-post lifts with wheel alignment



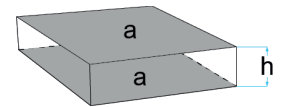


**AP-CIR.530.470.H50**

a	h
530 × 470 mm	50 mm

12,00 kg with handle

suitable for:  
scissor lifts and 4-post lifts with wheel alignment



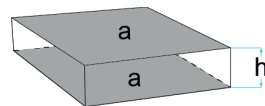
**NEW**

**AP-GMY.550.400.H50**

a	h
550 × 400 mm	50 mm

11,20 kg with handle

suitable for:  
scissor lifts and 4-post lifts with wheel alignment

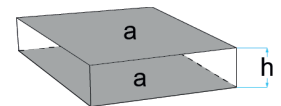


**AP-HWR.570.450.H50**

a	h
570 × 450 mm	50 mm

13,00 kg with handle

suitable for:  
scissor lifts and 4-post lifts with wheel alignment

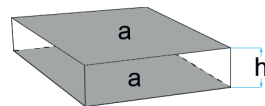


**AP-TAM.600.050.H50-OG**

a	h
600 × 50 mm	50 mm

1,40 kg without handle

suitable for:  
HERRMANN / scissor lifts and 4-post lifts with wheel alignment

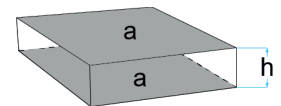


**AP-CRA.600.100.H50-OG**

a	h
600 × 100 mm	50 mm

2,80 kg without handle

suitable for:  
HERRMANN / scissor lifts and 4-post lifts with wheel alignment

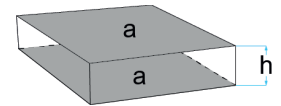
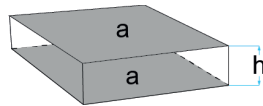


**AP-PAE.600.200.H50-OG**

a	h
600 × 200 mm	50 mm

5,60 kg without handle

suitable for:  
HERRMANN / scissor lifts and 4-post lifts with wheel alignment




### AP-VPZ.600.450.H50

a

h

600 × 450 mm

50 mm

 13,00 kg with handle

suitable for:  
scissor lifts and 4-post lifts with wheel alignment


### AP-JBP.600.465.H50

a

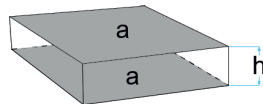
h

600 × 465 mm

50 mm

 14,00 kg with handle

suitable for:  
scissor lifts and 4-post lifts with wheel alignment



NEW


### AP-TTS.607.360.H50

a

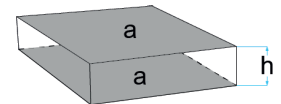
h

607 × 360 mm

50 mm

 10,50 kg with handle

suitable for:  
scissor lifts and 4-post lifts with wheel alignment



NEW


### AP-PMT.610.375.H50-OG

a

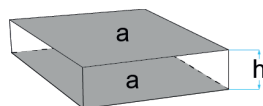
h

610 × 375 mm

50 mm

 12,00 kg with handle

suitable for:  
scissor lifts and 4-post lifts with wheel alignment



NEW

### AP-PMT.610.375.H50-OG

a

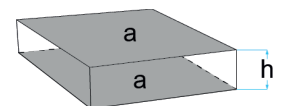
h

610 × 375 mm

50 mm

 12,00 kg without handle

suitable for:  
scissor lifts and 4-post lifts with wheel alignment



NEW

### AP-PPS.610.395.H50-OG

a

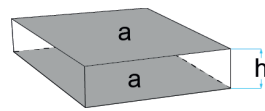
h

610 × 395 mm

50 mm


 12,10 kg without handle

suitable for:  
scissor lifts and 4-post lifts with wheel alignment

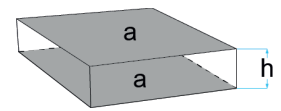


**AP-LBR.620.365.H50**

a	h
365 × 620 mm	50 mm


 11,00 kg with handle

suitable for:  
scissor lifts and 4-post lifts with wheel alignment

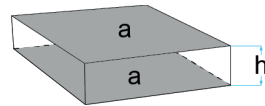
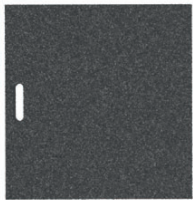


**AP-UWQ.633.500.H50**

a	h
633 × 500 mm	50 mm


 16,00 kg with handle

suitable for:  
scissor lifts and 4-post lifts with wheel alignment

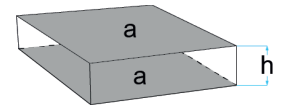


**AP-OAF.645.620.H50**

a	h
645 × 620 mm	50 mm

 20,00 kg with handle


suitable for:  
scissor lifts and 4-post lifts with wheel alignment



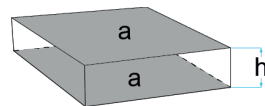
**NEW**

**AP-AGY.650.050.H50-OG**

a	h
650 × 50 mm	50 mm

 1,68 kg without handle

suitable for:  
HERRMANN / scissor lifts and 4-post lifts with wheel alignment



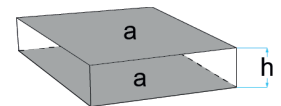
**NEW**

**AP-RKA.650.080.H50-OG**

a	h
650 × 80 mm	50 mm

 3,00 kg without handle


suitable for:  
scissor lifts and 4-post lifts with wheel alignment



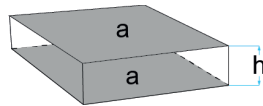
**NEW**

**AP-MIA.650.100.H50-OG**

a	h
650 × 100 mm	50 mm

 3,34 kg without handle

suitable for:  
HERRMANN / scissor lifts and 4-post lifts with wheel alignment



NEW

AP-LRF.650.120.H50-OG

a

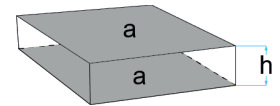
h

650 × 120 mm

50 mm

4,10 kg without handle

suitable for:  
scissor lifts and 4-post lifts with wheel alignment



NEW

AP-KJW.650.200.H50-OG

a

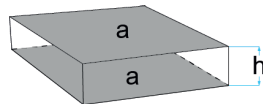
h

650 × 200 mm

50 mm

6,45 kg without handle

suitable for:  
HERRMANN / scissor lifts and 4-post lifts with wheel alignment



AP-LPG.650.400.H50

a

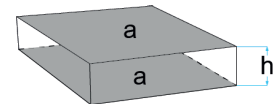
h

650 × 400 mm

50 mm

15,00 kg with handle

suitable for:  
scissor lifts and 4-post lifts with wheel alignment



AP-LUP.650.450.H50

a

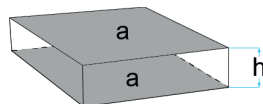
h

650 × 450 mm

50 mm

15,00 kg with handle

suitable for:  
scissor lifts and 4-post lifts with wheel alignment



AP-XFE.650.460.H50

a

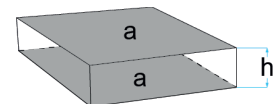
h

650 × 460 mm

50 mm

15,00 kg with handle

suitable for:  
scissor lifts and 4-post lifts with wheel alignment



AP-TVS.680.400.H50

a

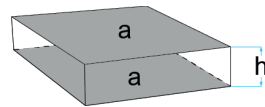
h

680 × 400 mm

50 mm


14,00 kg with handle

suitable for:  
scissor lifts and 4-post lifts with wheel alignment

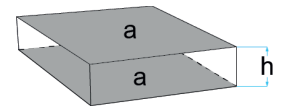


**AP-KML.680.430.H50**

a	h
680 × 430 mm	50 mm


 14,90 kg with handle

suitable for:  
scissor lifts and 4-post lifts with wheel alignment

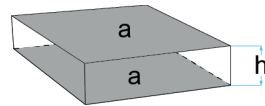


**AP-ZNA.730.650.H50**

a	h
730 × 650 mm	50 mm

 23,00 kg with handle


suitable for:  
scissor lifts and 4-post lifts with wheel alignment



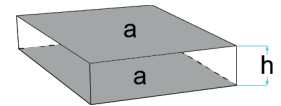
**NEW**

**AP-ZEZ.1000.500.H50-OG**

a	h
1000 × 500 mm	50 mm

 25,00 kg without handle


suitable for:  
scissor lifts and 4-post lifts with wheel alignment



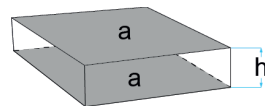
**NEW**

**AP-VMS.1100.600.H50-OG**

a	h
1100 × 600 mm	50 mm

 34,00 kg without handle


suitable for:  
scissor lifts and 4-post lifts with wheel alignment



**NEW**

**GP-EEQ.2000.500.H50-OG**

a	h
2000 × 500 mm	50 mm

 50,00 kg without handle

suitable for:  
scissor lifts and 4-post lifts with wheel alignment





# automotive lifting solutions

**böck**

Böck GmbH  
Hörschinger Straße 12  
4063 Hörsching, Austria  
[www.boeck-gmbh.at](http://www.boeck-gmbh.at)

+43 7221 722 44  
[office@boeck-gmbh.at](mailto:office@boeck-gmbh.at)