

KICKASS[®]

BLUETOOTH SWITCH PANEL

MOBILE APPLICATION USER GUIDE



Introduction

The Switch Panel App uses Bluetooth wireless technology to remotely control the switch panel via your mobile device. The App allows the same functions as hardwired switch panel including: master switch ON/OFF, individual circuit activation and function programming. Use the App to change the backlight colour and brightness, and to modify the switching mode programming: Toggle, Momentary or Pulse LED mode. The App feature special functions like customizing the individual switch labels and setting Switch Grouping Mode.

Compatibility

- Android phones
- Android tablets
- iPhone
- iPad

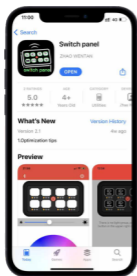
Before installation of this app, please check with your devices and make sure which operating system is Android 4.3 or iOS 8.0 or above.

Remote control range distance of this app is within 10 meter radius of the device.

App Installation

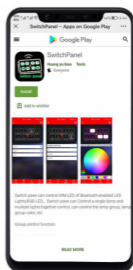
For Apple Devices:

Search "Switch Panel" in the App Store.
Install the application.



For Android Devices:

Search "Switch Panel" in the Google Play Store.
Install the application.



Or scan the QR codes below:



iOS



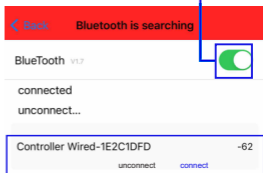
Android

4. Bluetooth Pairing

Click the top left corner of the bluetooth icon



Slide the switch to open the bluetooth



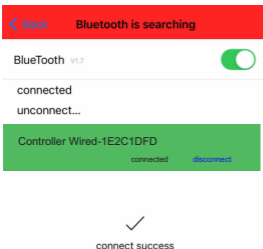
Select the Controller and click "Connect"

Control Box Bluetooth ID:

The reference "Controller Wired-563145FD" includes the name of the Control Box and the Bluetooth ID number of the switch panel. Each unit has its own and unique Bluetooth ID.

A label with the ID number can be found inside the lid of the Control Box. The App can only select and connect to one switch panel at a time.

Click "Back" on the top left corner until bluetooth connection succeed.

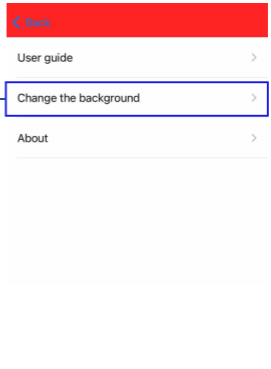


5. Settings

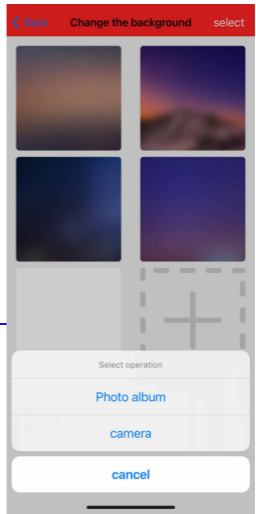
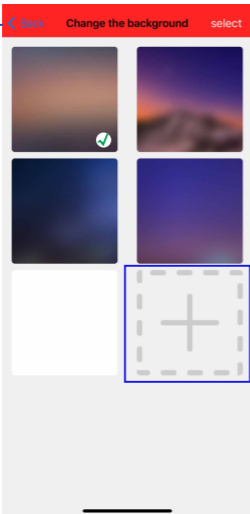
Click the Settings icon in the top right corner of the screen

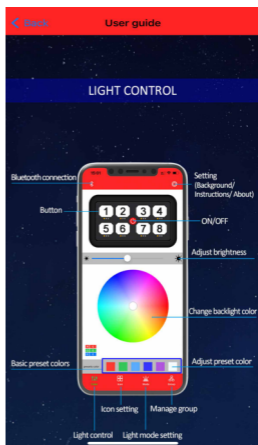
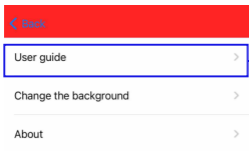


To change the background look of the App interface, select one of the default images by clicking “select” on the top right corner of the screen.



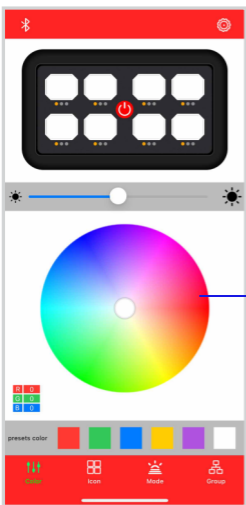
Or you can click “+” to select desired photos from your Photo Album or take a new photo to use your mobile devices camera.





Backlight Colour & Brightness

By default, the backlight is a green colour, the brightness of the backlight is automatically dimmable according to the brightness variation of the surrounding environment. The darker the surrounding is, the darker the backlight will be; the brighter the surrounding is, the brighter the backlight will be. This interface is also where the switch panel is operated from. Turn your device side ways to enlarge the switch panel interface for ease of use.



Slide the progress bar to manually adjust the switch panel backlight brightness.

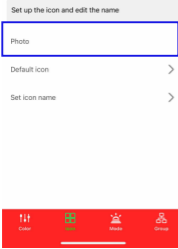
Press your finger on RGB colour wheel and slide around palette to select the desired colour choice of the backlight.

There are 6 different preset colours for your convenience

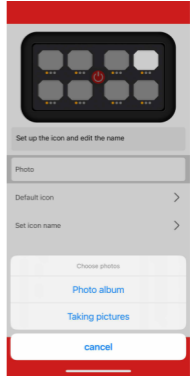
Setting Switch Label Icons



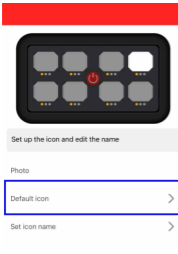
Step 1: let's take this circuit as an example, click and select the circuit.



Step 2: click "Photo" and then choose the desired image from your Photo Album or take a new picture to be the icon image of this specific circuit.

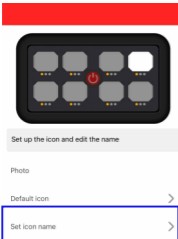


Or click "Default icon" and select from 200+ preset icons. Scroll up and down the screen and select the icon you need, click "Select" on the top right corner to save the setting.



Step 3: click "Set icon name", enter and edit the icon name, click "SAVE" when finished.

The name of the icon should not exceed 7 characters, including space character.

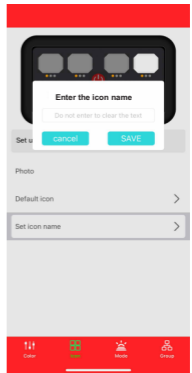


For Example:

Correct!



Incorrect!



Switching Mode Setting

Each switch circuit can be programmed to one of the following modes:

Toggle Mode - Red Indicator Light.

Press the circuit once to power on the connected device, press the circuit again to power it off.

Momentary Mode - Blue Indicator Light.

The connected device will be on only you press the switch, when you release your finger the device will powered off.

Pulse LED Mode - Green indicator light.

Press the switch once to power one the connected LED. The LED light will continue pulse or strobe until the switch is powered off.

The speed of the pulse or strobe can be adjusted with slide bar when this mode is selected.



Step 1: let's take this switch as an example, click and select the circuit.

Toggle

Momentary

Pulsed



Step 2: click and select the desired mode you need. Let's select the Momentary Mode in this example.



Step 3: go back to the "Color" interface, and click this circuit, check the function of the selected mode.



The setting mode will be automatically saved and the setting remains next time you open the app and operate the switch panel.



Switch Group Mode

Edit Group



There is no Group set. Please click Edit Group in the top right of your screen to group the buttons

This mode allows you to choose any of the switch circuits and make them working as a simultaneously as a group.

Step 1: let's take the switch 7 and 8 as an example. Click "Edit Group" on the top right corner.



Step 2: Select switch 7 and 8; Click 'SAVE' on the top right corner.

Step 3: Enter the group name and click 'SAVE'. The name of the group should not exceed 7 characters, including space character.

SAVE

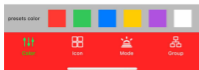


There is no Group set. Please click Edit Group in the top right of your screen to group the buttons

SAVE



Step 4: Go back to the "Color" interface, and click switch 7 or 8, these two circuits will perform the same Switch Mode function together.



Note: Each group can only perform in one mode: Toggle or Momentary or Pulsed.

For example, if circuit 7 was set up as Toggle Mode while circuit 8 was in Pulsed Mode, the minute when you make these two circuits into

one group, this group will only perform in Toggle or in Pulsed Mode. Two different modes can not be saved in one same group.



When the switch is operated on the hardwired panel, the App will also show the current operation and vice versa.

Enjoy the convince of both hardwired and remote switching with your Bluetooth Switch Panel!