

KICKASS[®]

BLUETOOTH SWITCH PANEL 8 GANG USER GUIDE



KABTSWPANEL-8

TABLE OF CONTENT

- WARNING & SAFETY INSTRUCTIONS 1
- WHAT'S INCLUDED 3
- PRODUCT FEATURES 4
- SPECIFICATIONS 4
- DIMENSIONS 5
- CONTROL BOX INSTALLATION 6
 - FIXED MOUNT BRACKET OPTION 6
 - FLUSH MOUNT OPTION 7
- SWITCH PANEL MOUNTING 8
 - ADJUSTABLE MOUNT BRACKET OPTION 8
 - FLUSH MOUNT OPTION 10
- WIRING INSTALLATION 12
- SWITCH PANEL INDICATION 14
- BACKLIGTH COLOR & BRIGHTNESS 15
- SWITCH MODE PROGRAMING 16
- SMART PHONE CONTROL AVAILABLE 17
- FCC COMPLIANCE STATEMENT 18
- WARRANTY 19

WARNING & SAFETY INSTRUCTIONS

SAVE THESE INSTRUCTIONS - THIS MANUAL CONTAINS IMPORTANT SAFETY INSTRUCTIONS FOR THE KICKASS BLUETOOTH SWITCH PANEL.

DO NOT OPERATE THE SYSTEM UNLESS YOU HAVE READ AND UNDERSTOOD THIS MANUAL AND THE SYSTEM IS INSTALLED AS PER THESE INSTALLATION INSTRUCTIONS. KICKASS RECOMMENDS THAT THE SYSTEM BE INSTALLED BY A SUITABLY QUALIFIED PERSON.

DISCLAIMER: KICKASS accepts no liability for any injury, loss or property damage which may occur from the improper or unsafe installation or use of its products.



WARNING

1. THIS PRODUCT SHOULD NOT BE USED FOR ANY MEDICAL PURPOSES, LIFE SUSTAINING EQUIPMENT, SAFETY APPLICATIONS, OR ANY APPLICATION WHERE EQUIPMENT FAILURE CAN CAUSE INJURY, DEATH, FIRES OR ANY OTHER HAZARD.
2. READ ALL MANUALS, AND THESE WARNINGS AND INSTRUCTIONS CAREFULLY BEFORE USING THIS PRODUCT. FAILURE TO OBSERVE THESE INSTRUCTIONS PROPERLY, OR IMPROPER USE OF THE PRODUCT OR MOBILE APP COULD RESULT IN PERSONAL INJURY, INCLUDING DEATH OR DAMAGE TO PROPERTY.



CAUTION

1. The Switch Panel App. allows modification to the system functionality of your KickAss Bluetooth Switch Panel; only use this app. if you have read and fully understand all the instructions in this manual
2. Risk of explosive gases: Working in the vicinity of a battery is dangerous. Batteries may generate explosive gases during normal operation. For this reason, it is of utmost importance that you follow the instructions of the battery manufacture each time you use the system. Prevent flames and sparks, and provide adequate ventilation, especially during charging or discharging.
3. Do not install this product in the same compartment where flammable materials, such as petrol/gasoline or Liquefied Petroleum Gas (LPG) are stored.
4. The system should not be used by persons under the age of 18, or those with reduced physical, sensory or mental capabilities, or lack of experience and knowledge, unless they are supervised or have been instructed on how to use the appliance by a person responsible for their safety. Persons under the age of 18 should be supervised.

5. Do not operate the Bluetooth Switch Panel or the Mobile Application to control movable items whilst under the influence of alcohol or drugs. Doing so may result in personal injury or property damage.
6. Do NOT alter or disassemble the system under any circumstances. All services or repairs must be returned to KickAss for repair. Incorrect handling or reassembly may result in a risk of electric shock or fire and may void the unit warranty.
7. Cable and fuse sizes are specified by various codes and standards which depend on the type of vehicle the system is installed into. Selecting the wrong cable or fuse size could result in harm to the installer or user and/ or damage to the system components or other equipment installed in the system. For this reason, do not replace fuses with ones of higher amperage ratings. The installer is responsible for ensuring that the correct cable and fuse sizes are used when installing this system.
8. Do not drop metal tools onto a vehicle battery. Doing so might cause the battery to spark or might short-circuit the battery or other electrical parts that may cause an explosion. Remove personal metal items such as rings, bracelets, necklaces, and watches before working with a vehicle battery. A vehicle battery can produce a short-circuit current high enough to weld a ring or the like to metal, causing a severe burn.
9. **NEVER SMOKE OR ALLOW A SPARK OR FLAME NEAR A BATTERY AS THESE MAY CAUSE THE BATTERY TO EXPLODE. TO REDUCE THE RISK OF A SPARK NEAR A BATTERY WHEN CONNECTING THE BATTERY INSTALLED IN A VEHICLE ALWAYS DO THE FOLLOWING:**
10. Wire all cable connections to the Control Box before making connection to the vehicle battery. The Battery Output (positive) must be connected first, followed by the Ground (chassis) terminal. The chassis connection should be made away from the battery and fuel lines.
11. Do not use this product to control safety critical devices or those that could cause harm if operated remotely (for example fume exhaust fans or lifters). Only operate devices with moving parts when you have a clear line of sight to the moving parts.
12. Ensure that the Display is not mounted in vehicle head-impact zones. Doing so may result in injury to the driver and/or passenger in the event of an accident.
13. Ensure the Display is not mounted where it may distract the driver of the vehicle. Distracting the driver may result in an accident.
14. Risk of damage to the system. Do NOT connect a load negative (-) to the chassis AND to the applicable negative (-) output channel as this may cause damage to the Distribution Box under some circumstances. Connect to the applicable negative (-) output channel OR a suitable chassis grounding point to avoid damage.
15. The Control Box may be mounted in any orientation but must be mounted onto a flat, solid surface using M6 screws or bolts. Failure to adequately mount the unit, such as using adhesives to mount the unit will result in unreliable operation of system. It is the installer's responsibility to ensure their installation complies with any applicable legal and regulatory requirements.
16. The Switch Panel App and has not been tested on all smartphones available on the market so is not guaranteed to work on all devices. However, the app should work on most phones with Bluetooth® 4.0 (or later) running IOS 11. 1 (or later) or Android 7.0 (or later).

WHAT'S INCLUDED

Control Box



Switch Panel



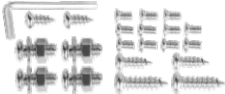
Control Harness & Power Cables



Heavy Duty Circuit Breaker



Mounting Brackets & Hardware



Switch Labels
(50x Graphic Decals)



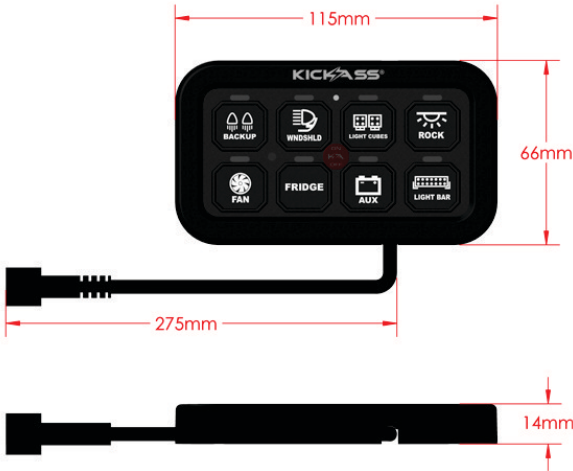
PRODUCT FEATURES

- Control up to 8 circuits via Switch Panel or Bluetooth app.
- Programmable switch modes: Toggle, Momentary, Pulsed
- RGB colour changeable switch panel backlight
- Backlight dims automatically with brightness control setting
- Customizable Switch Panel with 50 individual graphic labels
- System voltage range: 12V - 24VDC
- Max. Input Current: 60 Amps
- Emergency Low Voltage Cut-Off (A dedicate Low Voltage Drop Out (LVD) should still be used to ensure your battery system is properly protected)
- Includes all necessary installation wiring harnesses and hardware
- Spare fuses (6x) and fuse pulled located in control box

SPECIFICATIONS

Backlight Function	Adjustable dimmer function with RGB LED colour settings
Switch Control Function	Toggle Mode - red indicator light Momentary Mode - blue indicator light Pulsed Mode - green indicator light
Operating Voltage Range	8-30V
Power Handling	720W (12V System) - 1440W (24V System)
Maximum Current	60A
Standby Current	1mA (Low Ambient Light) 20mA (High Ambient Light)
Switch Panel Dimensions	115 x 66 x 15mm
Control Box Module Dimensions	190 x 114 x 35mm
Technology	IGBT
Bluetooth	Yes

DIMENSIONS



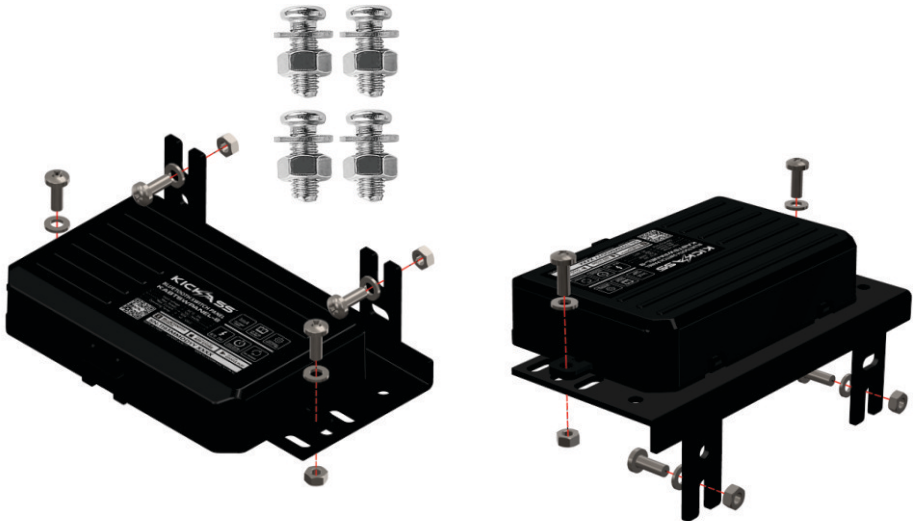
CONTROL BOX INSTALLATION

The Control Box can be mounted in a number of ways; including fixed mount using the supplied bracket or flush mounted to any flat surface, using the mounting points on the units base. When choosing the mounting location, consider the following:

- Check Power Cables with reach supply battery and allow for unobstructed path for cables and control harness.
- Area behind mounting surface should be checked carefully to ensure no existing wiring or vehicle components will be damaged during the installation process.
- Ideal surface thickness 3 - 6mm

Fixed Mount Bracket Option

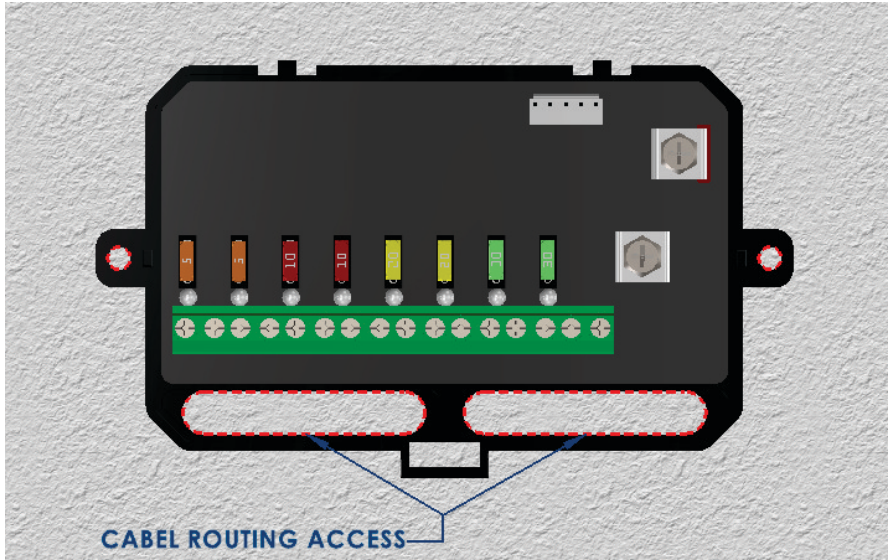
- Choose the most suitable mounting origination for the bracket and Control Box.
- Using the mounting bracket as guide, mark the mounting holes and drill with 7mm bit.
- Use supplied (4x) M6x16mm cross head bolt, washers and nuts to secure bracket to surface then fix Control Box to bracket.



Flush Mount Option

Using the Control Box as a guide, mark mounting holes and cable routing cutouts. Drill holes with a 7mm bit and carefully cut the cable routing access with a jigsaw.

Use supplied M6x16mm cross head bolts, washers and nuts to secure the Control Box base to the surface.



SWITCH PANEL MOUNTING

There are two different mounting bracket options provided for Switch Panel: Adjustable mount bracket for customizing the panel angle or fixed mount bracket for flush fitment to any flat surface.

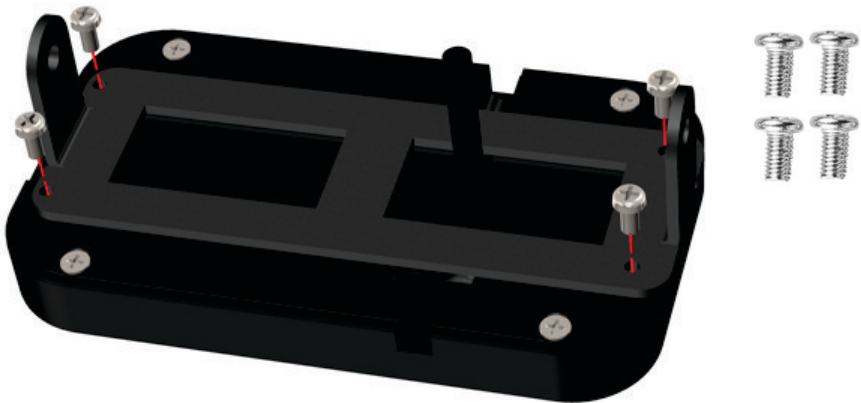
When choosing the mounting location, consider the following:

- Check Control Harness is long enough to reach the desired location and allow for an unobstructed path for harness.
- Area behind mounting surface should be checked carefully to ensure no existing wiring or vehicle components will be damaged during the installation process.
- Ideal surface thickness 3 - 6mm

After the installation of the Switch Panel and Control Box, proceed to the wiring installation.

Adjustable Mount Bracket Option

1. Screw part of bracket to back of Switch Panel as shown with the (4x) M3x6mm Cross Round Head screws.



2. Mount the other part of bracket to desired surface with M5 screws.
Choose the appropriate length screw to suit surface thickness.

NOTE: Check behind fitment area that not existing wiring will be damaged

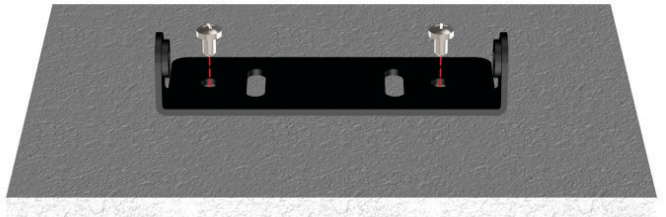
M5*10



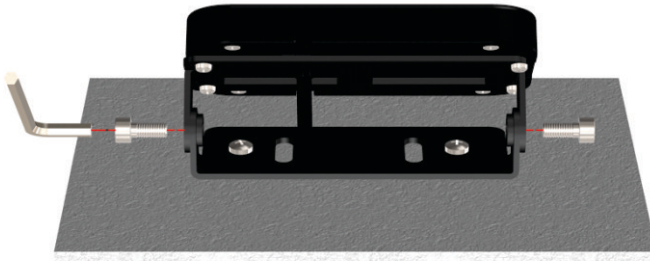
M5*18



M5*23



3. Using the supplied Allen key tool and (2x) M5 hex socket bolts, attach the two parts of the adjustable bracket together.

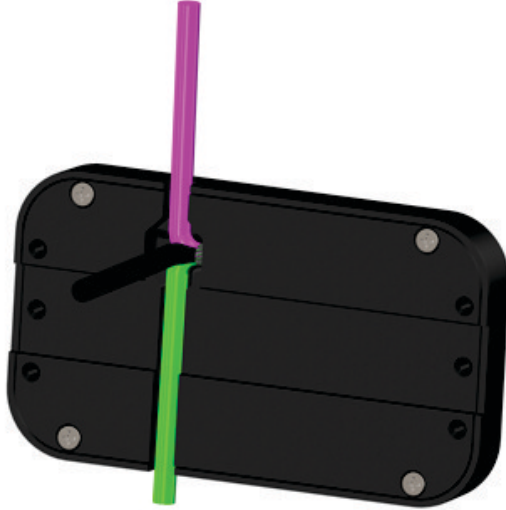


4. Before fully tightening the bolts, find the desired angle for the switch panel.

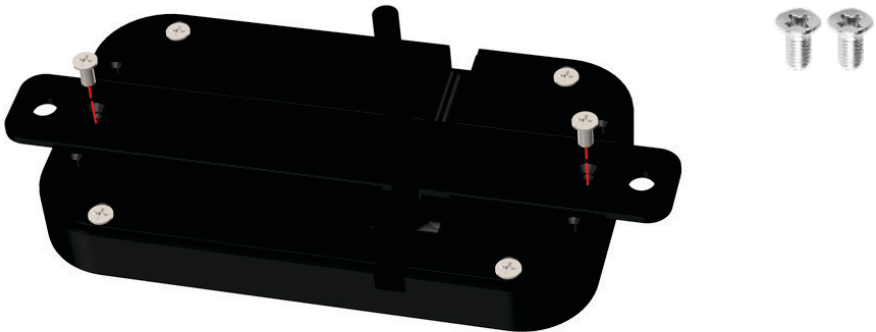


Flush Mount Option

1. Choose the appropriate cable direction before fixing the flush mount bracket to the switch panel. These include through wall or surface routing for the cable direction.

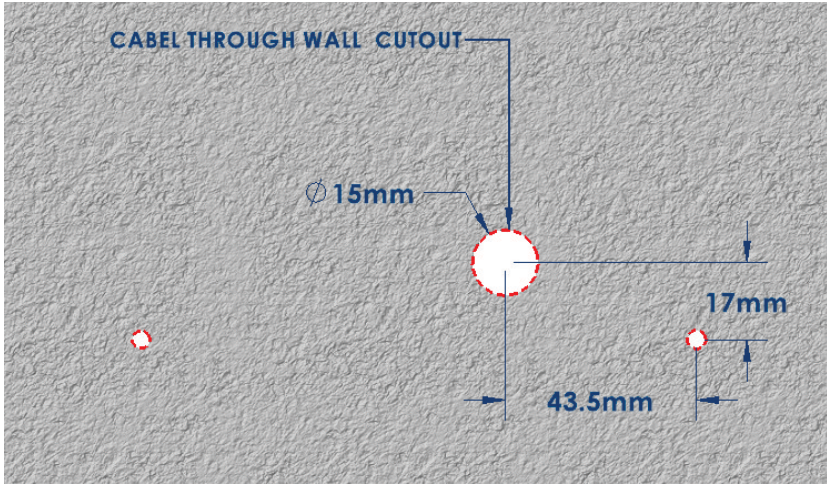


2. Use the (2x) M3 x 6mm Cross Counter Sunk screws to fix the flush bracket to the back of the switch panel as shown.



3. For through wall cable routing, use the template shown as a guide for cutting the access hole for the switch panel connection cable.

NOTE: Check behind fitment area that not existing wiring will be damaged before drilling or cutting surface.



4. Mount switch panel to the desired surface with the supplied M5 screws. Choose the appropriate length screw to suit surface thickness.



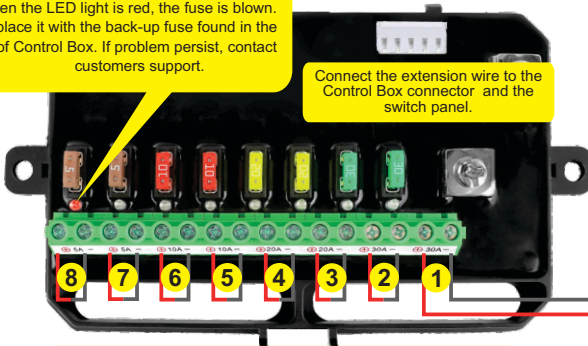
WIRING INSTALLATION

Caution: Before powering on the Switch Panel make sure all power cables are wired correctly as shown and all connections are tightly secured. If the supplied power cables are not a suitable length for the installation, you must increase the cable size accordingly to reduce any potential voltage drop. Always install the circuit breaker close to the battery, using the shortest cable length possible.

Fuse Indicator Light

When the LED light is red, the fuse is blown. Replace it with the back-up fuse found in the lid of Control Box. If problem persist, contact customers support.

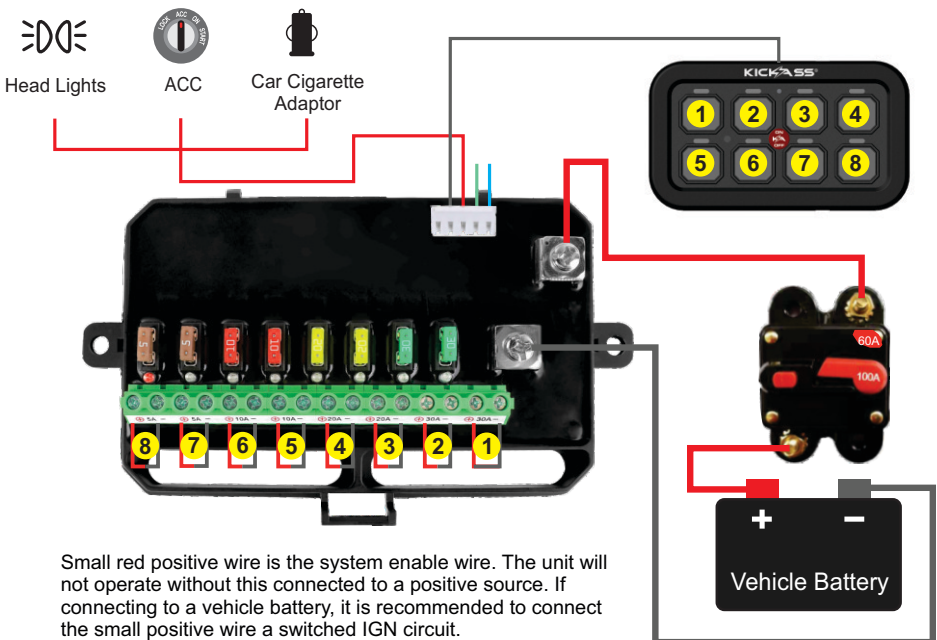
Connect the extension wire to the Control Box connector and the switch panel.



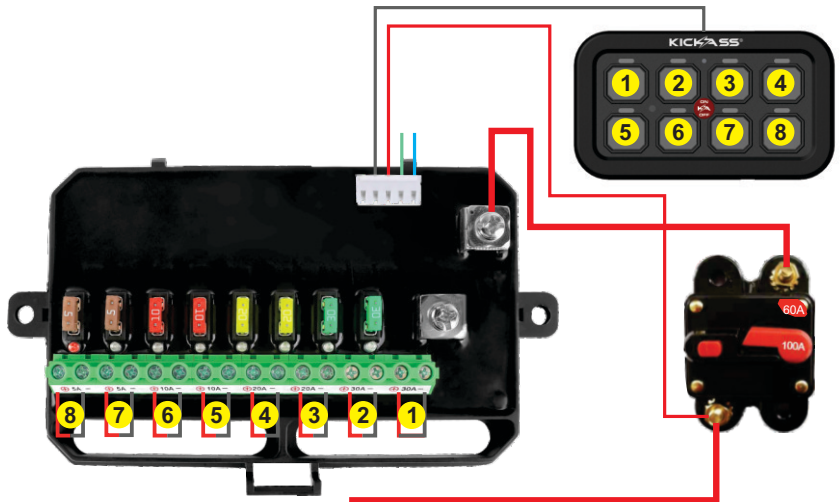
Output Connections

Connect to 8 auxiliary LED lights or electrical devices

When connecting a load to the control panel, ensure the connected loads rating does not exceed the connected outputs fuse rating



Small red positive wire is the system enable wire. The unit will not operate without this connected to a positive source. If connecting to a vehicle battery, it is recommended to connect the small positive wire a switched IGN circuit.



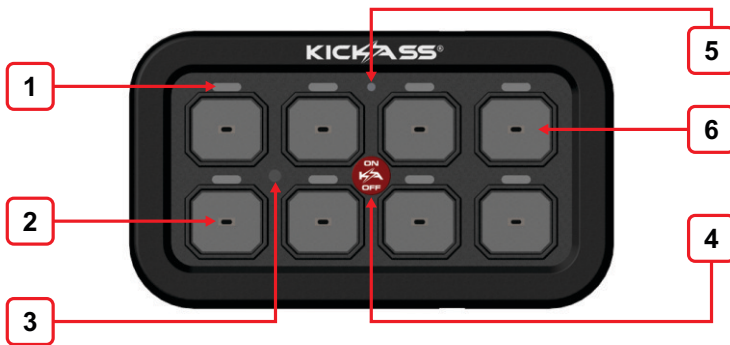
If connecting to an auxiliary battery or control device such as the KickAss Control Hub or Battery Box it is recommended to connect the small positive wire to the output of an LVD to ensure the auxiliary battery is not over discharged

The Switch Panel control system has eight switched circuits, each has a maximum current rating. The total operating amperage of the connected accessories can not exceed 60 amps. You may have multiple electrical devices or auxiliary LED lights connected that total more than 60 amps, but you can not have them turned on at the same time. Otherwise, the control box will be damaged. The switch panel comes configured with the following fuses:

Circuit 1	Circuit 2	Circuit 3	Circuit 4
30A	30A	20A	20A
Circuit 5	Circuit 6	Circuit 7	Circuit 8
10A	10A	5A	5A



SWITCH PANEL INDICATION

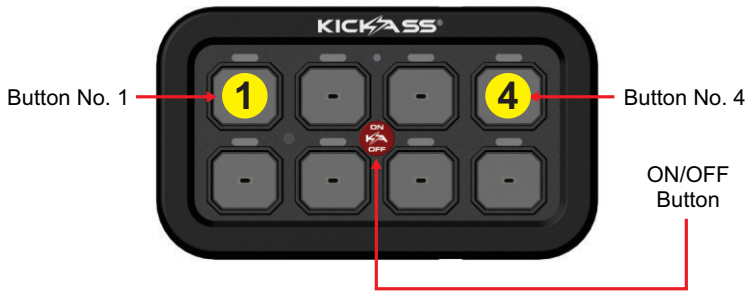


- 1 - Red/Green/Blue LED indicator LED lights up to show the circuit is powered on.
- 2 - Area for DIY placement of the selected switch labels.
- 3 - Position of the integrated dimmer sensor for backlight.
- 4 - Manual master on/off activation button, press it to power on or off all circuits.
- 5 - Red LED lights up when you press the manual master on/off activation button.
- 6 - Switch panel backlight is activated when master On/Off button is pressed. Backlight colour is green by default.

BACKLIGHT COLOR & BRIGHTNESS

By default, the backlight is a green colour, the brightness of the backlight is automatically dimmable according to the brightness variation of the surrounding environment. The darker the surrounding is, the darker the backlight will be; the brighter the surrounding is, the brighter the backlight will be.

To change the backlight colour, please check the steps below:



Step 1: Press the ON/OFF button and any of the other switch buttons at the same time once, then release your fingers. Backlight Setting Mode is now entered.

Step 2: Press and hold Button No. 1 the backlight colour will change gradually in an anti clockwise direction, or press and hold Button 4 to change colour in a clockwise direction. Release your finger when the desired backlight colour is selected. Press the ON/OFF button again once to save the setting.



There are a total of 64 different colours of the backlight available. To resume factory setting - green backlight, press the ON/OFF button and hold on for at least 12 seconds, then release your finger. Press the ON/OFF button again to save the setting.

SWITCH MODE PROGRAMING

The switch panel has 8 circuits that can be programmed as either Toggle, Momentary or Pulsed Mode. By default each switch circuit is set to Toggle Mode. To enable or disable the three modes, please follow the steps below to manually program the function modes.

Function of Switch Modes explanation:

Toggle Mode: Press the desired switch once to power on the connected device, press the switch button again to power if off.

Momentary Mode: The connected device will be activated only when you press the desired switch button, and when you release the button the device will be off.

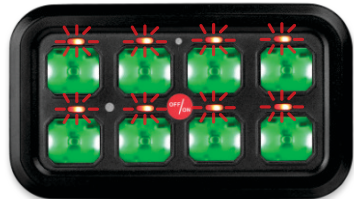
Pulsed "LED" Mode: When you press the desired switch, the connected LED light will be activated and will continue to flash or strobe. Press the circuit again to turn the LED off.

Step 1: Press On/Off button to power on Panel.



Switch Mode Settings: All indicator LED's will flash simultaneously when setting mode is entered.

Step 2: Press the ON/OFF button twice very quickly to enter the "Switch Mode Settings". Press and release the switch circuit button you wish to program until the desired mode is selected. Then press the ON/OFF button again to save the setting within 12 seconds.



Red indicator light
Toggle Mode



Blue indicator light
Momentary Mode



Green indicator light
Pulsed Mode



Step 3: Test functionality of the switch circuit to confirm the mode setting. If you are unsuccessful, power off the switch panel and repeat steps 1-2. Don't forget to press the ON/OFF button to save the settings!

Step 4: Repeat steps 1-3 to change/set the mode for all 8 circuits.

SMART PHONE CONTROL AVAILABLE

Scan the QR code and download the App - Switch Panel. The App allows for full control of the switch panel as well switch mode function programming. Download the App user guide for details.



For Apple Devices



For Android Devices



FCC COMPLIANCE STATEMENT

This device complies with part 15 of the FCC Rules. Operation is subject to the following two conditions: (1) this device may not cause harmful interference, and (2) this device must accept any interference received, including interference that may cause undesired operation.

Note: This equipment has been tested and found to comply with the limits for a Class B digital device, pursuant to part 15 of the FCC Rules. These limits are designed to provide reasonable protection against harmful interference in a residential installation. This equipment generates, uses, and can radiate radio frequency energy and, if not installed and used in accordance with the instructions, may cause harmful interference to radio communications. However, there is no guarantee that interference will not occur in a particular installation.

If this equipment does cause harmful interference to radio or television reception, which can be determined by turning the equipment off and on, the user is encouraged to try to correct the interference by one or more of the following measures:

- Reorient or relocate the receiving antenna.
- Increase the separation between the equipment and receiver.
- Connect the equipment to an outlet on a circuit different from that to which the receiver is connected.
- Consult the dealer or an experienced radio/TV technician for help.

Changes or modifications to this product not authorized by KickAss could void the electromagnetic compatibility (EMC) and wireless compliance and negate your authority to operate the product.

This product has demonstrated EMC compliance under conditions that included the use of compliant peripheral devices and shielded cables between system components. It is important that you use compliant peripheral devices and shielded cables between system components to reduce the possibility of causing interference to radios, television sets, and other electronic devices.

Exposure to radio frequency energy. The radiated output power of this device meets the limits of FCC/IC radio frequency exposure limits. This device should be operated with a minimum separation distance of 20 cm (8 inches) between the equipment and a person's body.

WARRANTY

Warranty Period:

KickAss Products Pty Ltd (KickAss) of 2 Mallet Street, Kunda Park, QLD, 4556 offers a 12 month warranty from date of purchase against manufacturing defects in KickAss products.

Warranty Inclusions:

Under ordinary usage conditions, this warranty covers any defect in design or manufacture which results in our product failing to perform substantially as described in our advertising or literature (i.e. product manuals).

Where we are at fault during the warranty period, we will either repair or replace the product (or part of the product) at our discretion. When a product is repaired or replaced under this warranty, the original warranty period is not renewed or extended.

This warranty is provided in addition to your other rights and remedies under the Australian Consumer Law and does not exclude, restrict, modify, limit or override your rights under the Australian Consumer Law.

Warranty Exclusions:

Our warranty is non-transferable and is only offered to the original purchaser of our product.

Our warranty does not apply to:

1. damage caused by any improper use of our product(s);
2. damage caused by faulty installation or modification made during installation;
3. damage caused by mould, insects, animals, misuse, incorrect operation, adverse weather, accidents and fair wear and tear;
4. damage caused by exposure to excessive sunlight;
5. costs, losses or charges:
6. of removing and reinstalling the product;
7. directly or indirectly associated with the product failing to operate.
8. commercial use of KickAss products by government organisations or commercial fleet applications;
9. KickAss products that are on-sold by the customer or exported for use outside of Australia.

How to Claim:

To make a claim visit supportportal.kickassproducts.com.au, email sales@kickassproducts.com.au. Please provide your proof of purchase (i.e. sales receipt) to assist with your warranty claim.

Once we approve your warranty claim, we will arrange (at our cost) return shipping of the faulty product to an assessment facility of our choice. Once we have determined the cause of the defect, we will contact you with the outcome of our assessment and advise whether the faulty product will be repaired or replaced.

Australian Consumer Law:

Our goods come with guarantees that cannot be excluded under the Australian Consumer Law. You are entitled to a replacement or refund for a major failure and compensation for any other reasonably foreseeable loss or damage. You are also entitled to have the goods repaired or replaced if the goods fail to be of acceptable quality and the failure does not amount to a major failure.



RGB PROGRAMMABLE 8 SWITCH PANEL SYSTEM

- Smart phone App control
- RGB Color changeable backlight
- Toggle / Momentary / Pulsed modes
- Universal application



THANK YOU FOR CHOOSING

KICK  **ASS**®



For more information please visit us at:
kickassproducts.com.au