

COMPANY NAME \_\_\_\_\_

CONTACT NAME \_\_\_\_\_

SHIP TO ADDRESS \_\_\_\_\_

PHONE \_\_\_\_\_

JOB NAME / PO# \_\_\_\_\_

EMAIL \_\_\_\_\_

FAX \_\_\_\_\_

JOB DATE \_\_\_\_\_

NECS USE FIELDS

NECS S/O# \_\_\_\_\_

NECS CUST # \_\_\_\_\_

SHIP VIA \_\_\_\_\_

SHIP DATE \_\_\_\_\_

OVAL -TO- ROUND  
ROUND -TO- OVAl

# CUSTOM ADAPTER

RECTANGLE -TO- ROUND  
ROUND -TO- RECTANGLE

## TOP:

ROUND DIA \_\_\_\_\_

(Most common)  ID Flex Liner (LW,HW,CO,SW,Elite2) (fit around ID Flex Liner)

OD Flex Liner (fit around OD Flex Liner)

MALE END (fit inside RIGID / ID Flex Liner)

(Most common)  FEMALE END (fit around RIGID Liner)

OVAL RND DIA \_\_\_\_\_ OV \_\_\_\_\_

ID Flex Liner (LW,HW,CO,SW,Elite2) (fit around ID Flex Liner)

OD Flex Liner (fit around OD Flex Liner)

MALE END (fit inside RIGID / ID Flex Liner)

FEMALE END (fit around RIGID Liner)

RECT RND DIA \_\_\_\_\_ Shaped to \_\_\_\_\_ X \_\_\_\_\_

ID Flex Liner (LW,HW,CO,SW,Elite2) (fit around ID Flex Liner)

OD Flex Liner (fit around OD Flex Liner)

MALE END (fit inside RIGID / ID Flex Liner)

FEMALE END (fit around RIGID Liner)

OTHER

(Provide Circumference & X-Y Axis of CUSTOM Ovals & Rectangles)

## BOTTOM:

ROUND DIA \_\_\_\_\_

ID Flex Liner (LW,HW,CO,SW,Elite2) (fit around ID Flex Liner)

OD Flex Liner (fit around OD Flex Liner)

(Most common)  MALE END (fit inside RIGID / ID Flex Liner)

FEMALE END (fit around RIGID Liner)

OVAL RND DIA \_\_\_\_\_ OV \_\_\_\_\_

ID Flex Liner (LW,HW,CO,SW,Elite2) (fit around ID Flex Liner)

OD Flex Liner (fit around OD Flex Liner)

MALE END (fit inside RIGID / ID Flex Liner)

STOVE MODEL (fit inside Appliance Collar)

DEFIANT  VIGILANT  ENCORE  WINTERWARM

RECT RND DIA \_\_\_\_\_ Shaped to \_\_\_\_\_ X \_\_\_\_\_

ID Flex Liner (LW,HW,CO,SW) (fit around ID Flex Liner)

OD Flex Liner (fit around OD Flex Liner)

MALE END (fit inside RIGID / ID Flex Liner)

TRUE RECTANGLE w/ 90° Corners \_\_\_\_\_ X \_\_\_\_\_  90° Flange for Mounting

OTHER

(Provide Circumference & X-Y Axis of CUSTOM Ovals & Rectangles)

Alloy:  304  
 316

Finish:  UNTREATED (Standard Finish)  
 PAINT BLACK (High Temp Black)

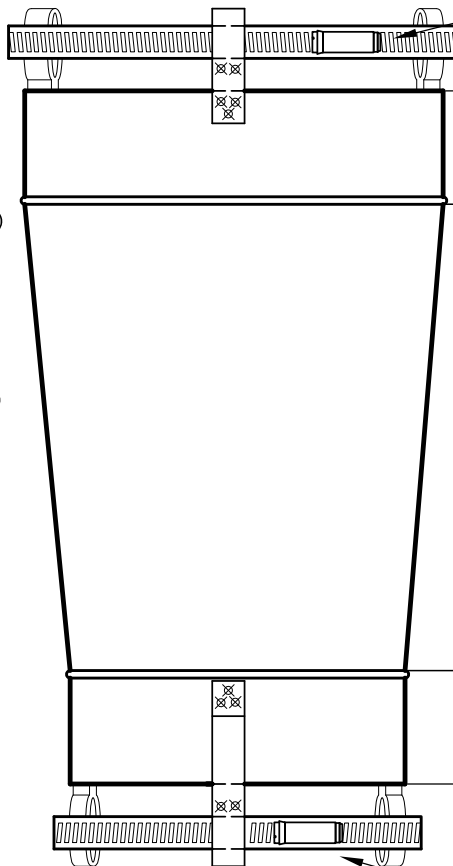
NECS COST

Quote  Order

Clamp:

Yes (for flex)

No



COLLAR  
(2" Standard)

LENGTH  
(6" Standard)

COLLAR  
(2" Standard)

(NOT COMMON)

Clamp:

Yes

No

SPECIAL NOTES:



## New England Supply

34 Commerce Street, Williston, VT 05495

Phone: (802) 858-4577 (888) 900-8106

Fax: (888) 392-4432

http://www.NewEnglandChimneySupply.com

Fax To: (888) 392-4432

-OR-

Email To:

order@nesbestflex.com