

DOWNEAST

MIA DINING TABLE

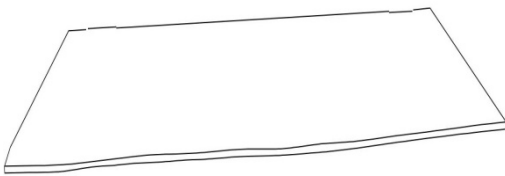
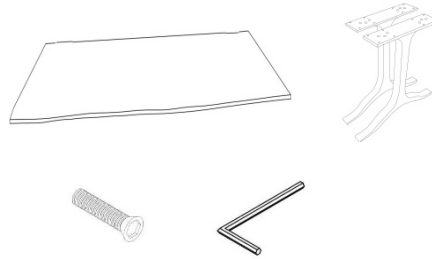
Assembly Instructions

Components/Parts

Table Top	01 pc
Metal Base	02 pcs

Hardware Included

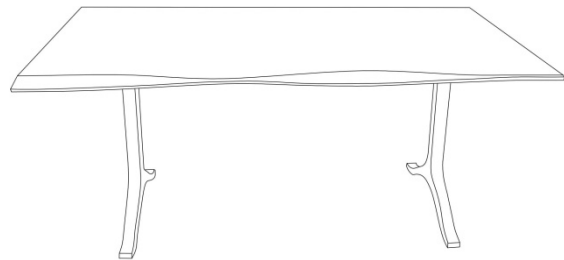
Allen Bolts	16 pcs
Allen Wrench	01 pcs



STEP 1 : Place the table top in reverse position on a clean padded surface.



STEP 2: Place the legs in reverse on the top while aligning the bottom of the table top & match the position marked (i.e. A/A & B/B).



STEP 3: Then use the Allen bolts (x 8 per leg) to fasten the leg posts to the table top by the help of Allen wrench provided.

STEP 4: After checking that all the parts are firmly fastened, you can then turn the table in upright direction, Your table is ready to use now.

Care Instructions:

- Clean surfaces with a dry or damp soft cloth. Do not use abrasive cleaners.
- Do not leave spills unattended. Always wipe up spills promptly and dry with a soft cloth
- Do not place hot objects directly on surface. It is highly recommended to protect your furniture from water and scratches by using coasters & placemats.
- For indoor use only. Avoid direct sunlight,
- The table top can be buffed up periodically by using a wood wax...