

### INSTALLATION GUIDE

#### **Product description:**

This part replaces OEM part number 82417711

#### **Contents (parts per pack):**

2 x Polyurethane Bushes      2 x Stainless steel sleeve



*Please read the complete fitting instructions and check package components before fitment. These fitting instructions are to be used as a guide and in conjunction with workshop manual. It is recommended that:*

- all work to be carried out by a licensed technician;
  - all safety precautions adhered to;
  - wheel alignment to be checked and adjusted as required after any suspension work.
- All fasteners must be tensioned to manufacturer's torque settings.*

#### **Fitting Instructions:**

1. Remove the original bush from the bracket: Using a vice hold the bracket in place and drill directly through the support holes (As shown in figure 1). This should release each plate and allow the original bush to be cut away from the inner sleeve.
  2. Clean any dirt and corrosion from the bore in the bracket. Remove any sharp edges from the bore of the bracket.
  3. Push the polyurethane bush into place over the original sleeve by opening the bush at its cut line (As shown in figure 2).
- B. Re-fit arm to the car. Tension all hardware to manufacturers recommended torque settings.



figure 1.

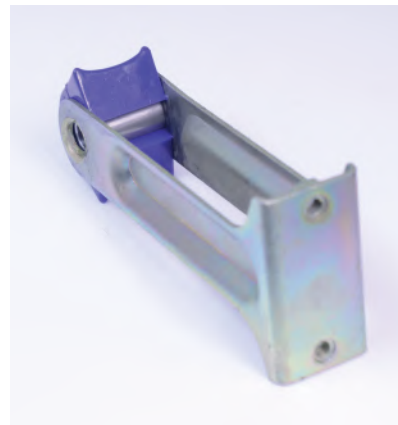


figure 2.