

System components

EV-SD Smoke detector



Our optical smoke detector is a compact design with modern styling and a mounting base that saves installation time.

The detector has many features and functions such as:

- 360° visible flashing LED status indicator
- Automatic drift compensation identifying dirty detectors
- Sensing algorithms to increase reliability and reduce false alarms
- Detector alarm and fault indication
- Start-up mode for fast commissioning
- Fast test mode for fast maintenance

Tested and approved to EN54-7 and compliant to EMC and Construction Product Directives.

Specifications:

Detection:	Photo-electric sampling every four seconds
Material:	Polycarbonate white
Ingress Rating:	IP23D
Dimensions:	100mm diameter x 46mm height
Weight:	135g
Supply:	8.5 – 33VDC, 40mA
Connection:	2 wire to interface panel
Environment:	-40°C to +70°C
Conformity:	EN 54-7

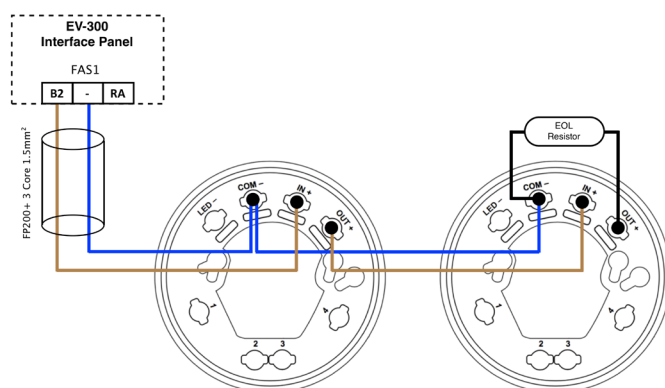
Part numbers:

EV-SD	Diode smoke detector
EV-SDRB	Relay smoke detector
EV-SDH	Smoke and heat detector

Spare accessories:

R47K	End of Line Resistor
------	----------------------

Wiring details:



LED status:

One second flash RED	Start-up or test mode
One second flash YELLOW	Dirty sensor
Four second flash RED	Normal operation
Four second flash YELLOW	Fault

Easivent is part of the SCS Group

T2 Capital Business Park, Parkway, Cardiff, CF3 2PZ

0870 240 6460 easivent.co.uk



EV-SD-V1

System components

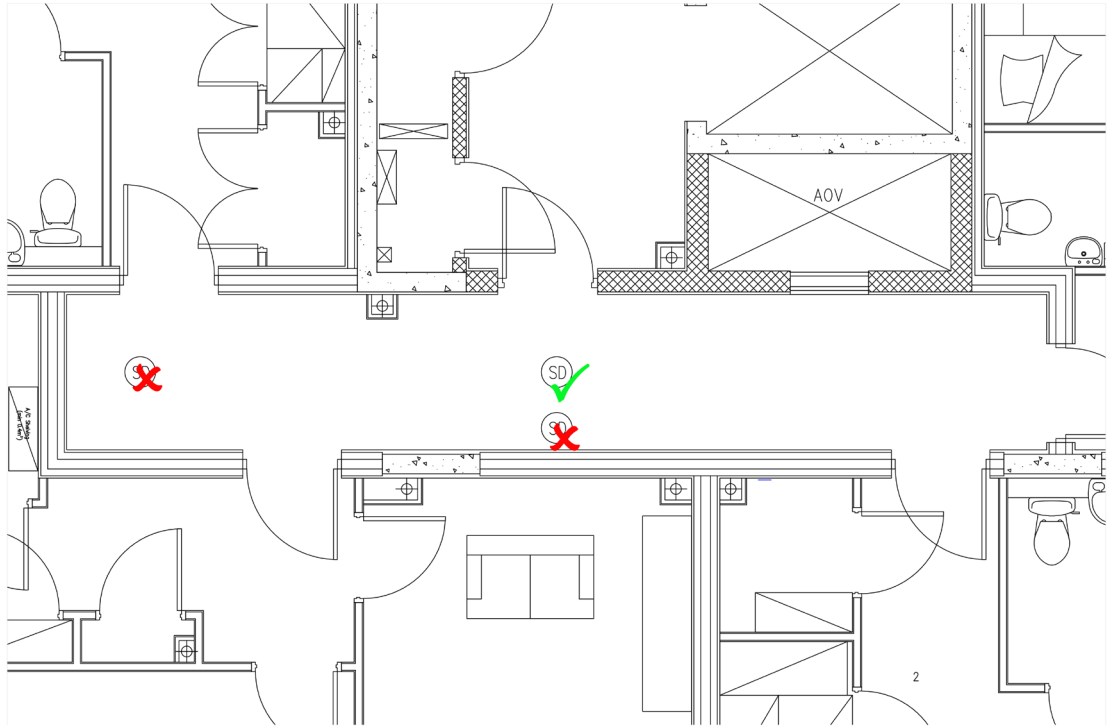
EV-SD Smoke detector



Installation instructions:

1. Siting

EV-SD smoke detectors will cover an area of 7.5m radius from the centre of the smoke detector and should be positioned on the ceiling as centrally as practically possible in the corridor or lobby. The detector should not be sited within 500mm of beams, down stands, obstructions or walls.



2. Fixing

The detector base should be fixed to the ceiling using suitably sized screws and plugs using the mounting holes provided. The cable should be connected as detailed on page 1 of this data sheet. Once the cabling is completed, insert the smoke detector into the base, twist and click to secure the detector head.

If you have any doubts about the positioning of the smoke detectors then please refer to Section 2 of BS: 5839 Part 1: 2002.

Commissioning:



To test the operation of the smoke detector in accordance with the manufacturer's instructions, Easivent provides an approved 'smoke testing kit' which is recommended as this will prevent damage to the smoke sensing chamber.

The testing should be carried out as per the instructions included with the kit.

Easivent is part of the SCS Group

T2 Capital Business Park, Parkway, Cardiff, CF3 2PZ

0870 240 6460

easivent.co.uk



EV-SD-V1