

Fabric Options



Nokia Natural

A soft linen-textured fabric in a beautiful light cream colour.

- 46% viscose, 20% linen, 18% polyester, 16% cotton
- Exceeds 100,000 double rubs
- Cleaning code SW
- Featured on our [Santana Bed](#)

Order swatches [here](#).



Nokia Cream

A soft linen-textured fabric in a beautiful light cream colour.

- 46% viscose, 20% linen, 18% polyester, 16% cotton
- Exceeds 100,000 double rubs
- Cleaning code SW
- Featured on our [Clarissa Bed](#)

Order swatches [here](#).

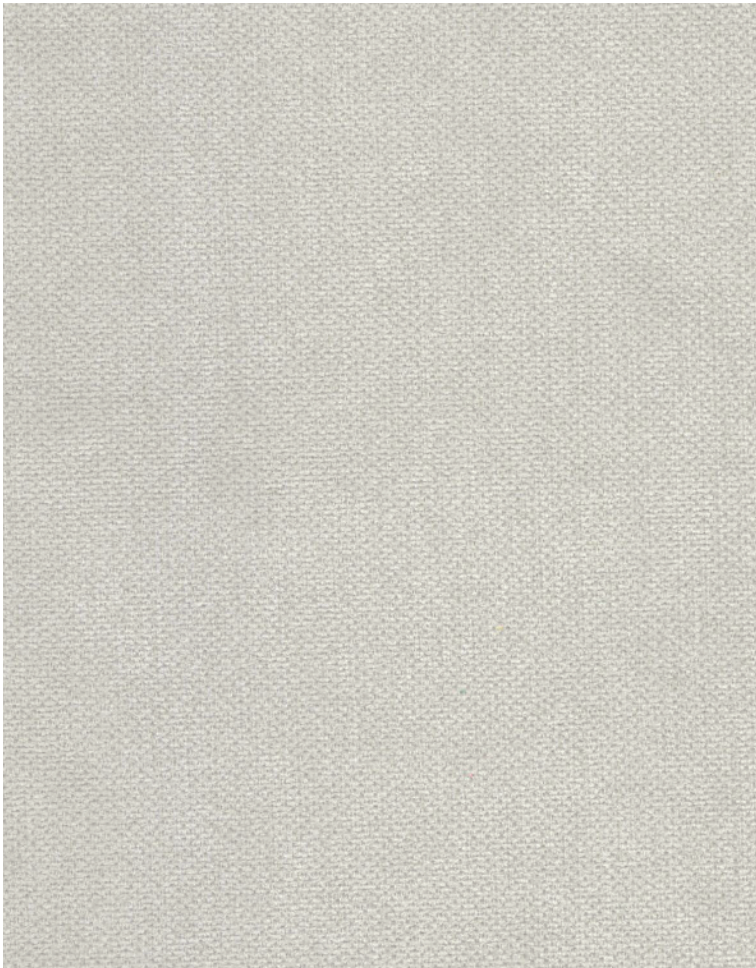


Nokia Light Grey

A soft linen-textured fabric in a light grey colour.

- 46% viscose, 20% linen, 18% polyester, 16% cotton
- Exceeds 100,000 double rubs
- Cleaning code SW
- Featured on our [Stacey Sectional](#)

Order swatches [here](#).

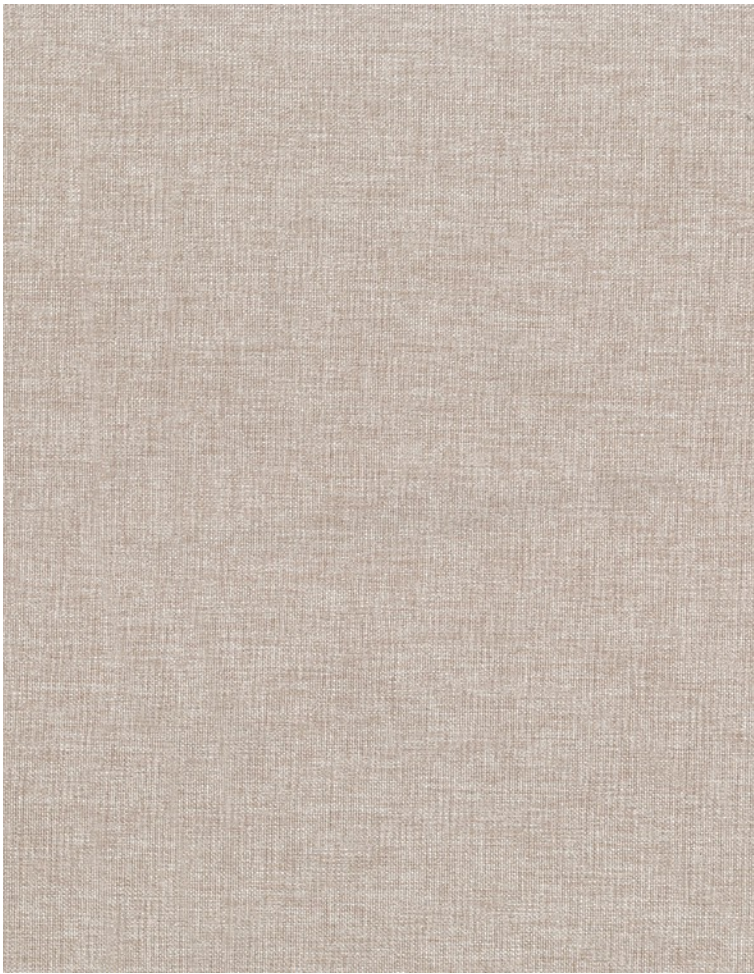


Kingston Ivory

A soft and versatile fabric with a uniform texture in a light ivory colour.

- 100% polyester
- Exceeds 100,000 double rubs
- Cleaning code W
- Featured on our [Santa Fe Bed](#)

Order swatches [here](#).

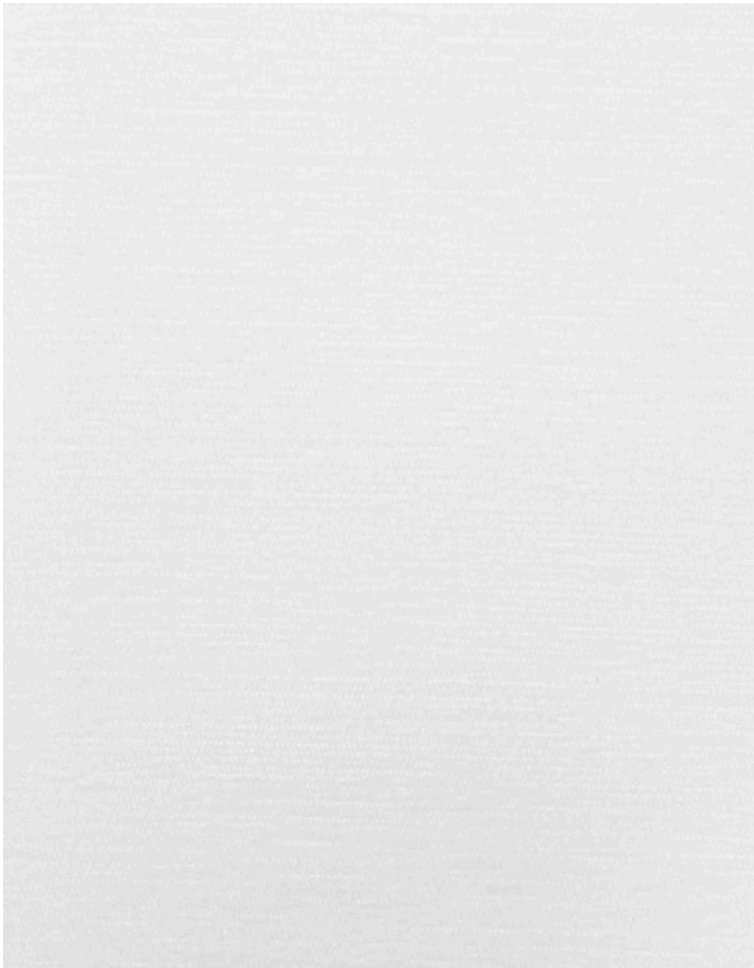


Natural

A soft wool-like fabric with a fine weave in a rich grey colour.

- 100% polyester
- Exceeds 100,000 double rubs
- Cleaning code SW
- Featured on our [Santana Bed](#)

Order swatches [here](#).

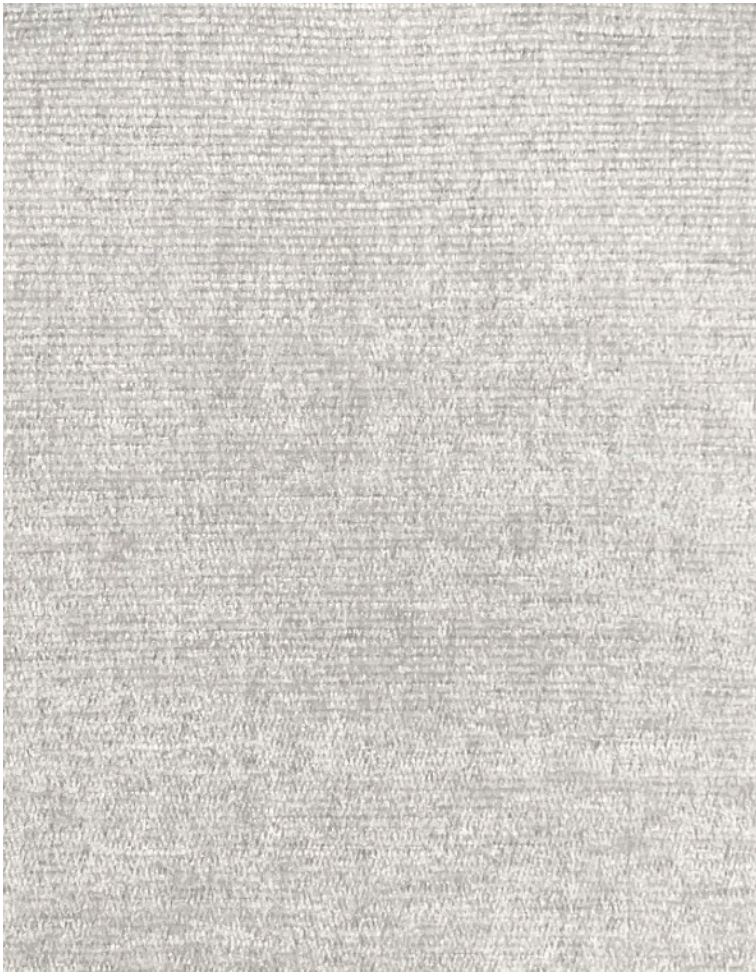


Gable Snow

A soft and durable chenille fabric in an off-white colour.

- Stain and soil resistant
- 100% polyester
- Exceeds 100,000 double rubs
- Cleaning code W

Order swatches [here](#).



Gable Silver Lining

A soft and durable chenille fabric in a warm grey colour.

- Stain and soil resistant
- 100% polyester
- Exceeds 100,000 double rubs
- Cleaning code W

Order swatches [here](#).



Gable Outer Space

A soft and durable chenille fabric in a rich dark blue colour.

- Stain and soil resistant
- 100% polyester
- Exceeds 100,000 double rubs
- Cleaning code W

Order swatches [here](#).



Contessa Vanilla

A soft and durable chenille fabric in a rich creamy colour.

- 100% polyester
- Exceeds 100,000 double rubs
- Cleaning code W

Order swatches [here](#).



Contessa Oyster

A soft and durable chenille fabric in an elegant light grey colour.

- 100% polyester
- Exceeds 100,000 double rubs
- Cleaning code W

Order swatches [here](#).

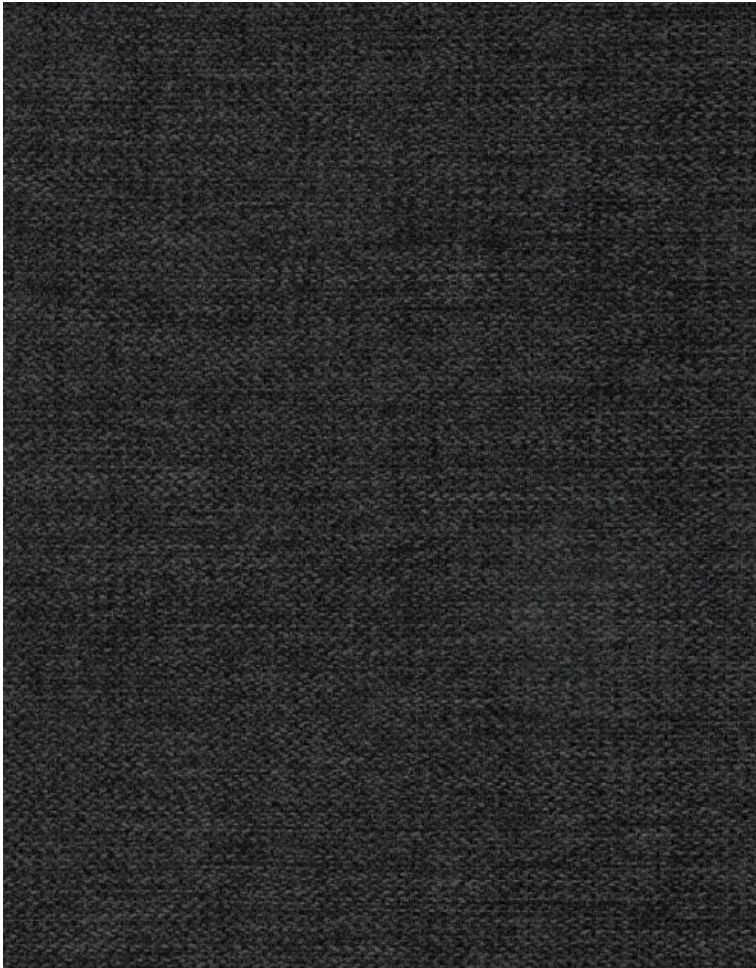


Contessa Paprika

A soft and durable chenille fabric burnt red colour

- 100% polyester
- Exceeds 100,000 double rubs
- Cleaning code W

Order swatches [here](#).



Luna Charcoal

A soft textured fabric in a dark grey colour.

- 100% polyester
- Exceeds 100,000 double rubs
- Cleaning code W

Order swatches [here](#).

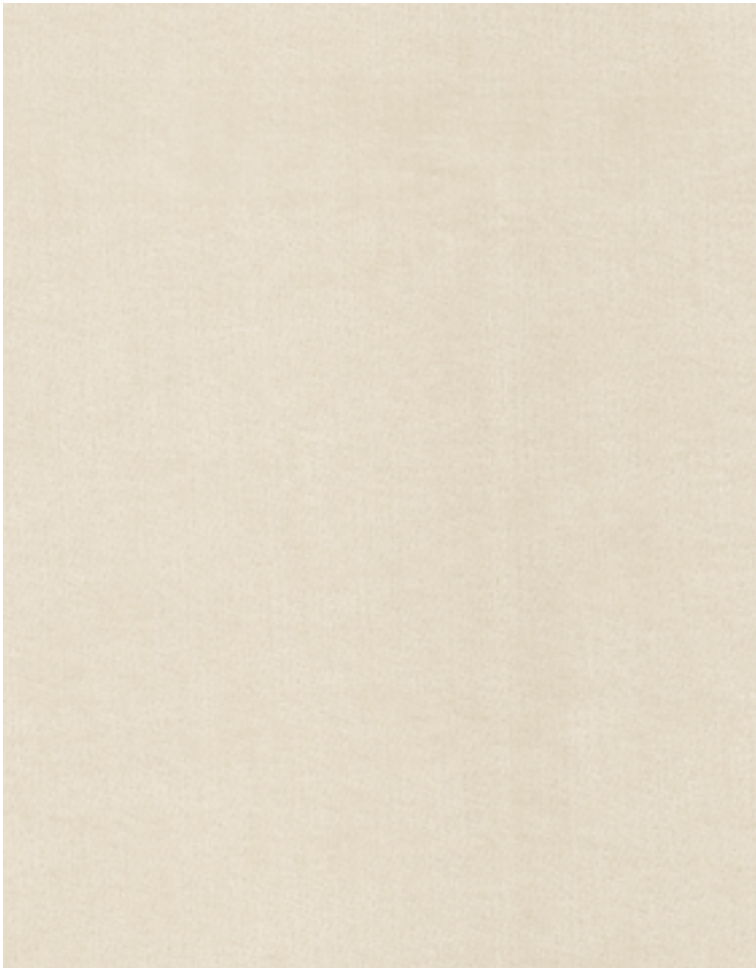


Muse Quartz

A soft woven fabric with a thick weave in a medium light cream colour.

- Stain and soil resistant
- 100% polyester
- Exceeds 50,000 double rubs
- Cleaning code W

Order swatches [here](#).

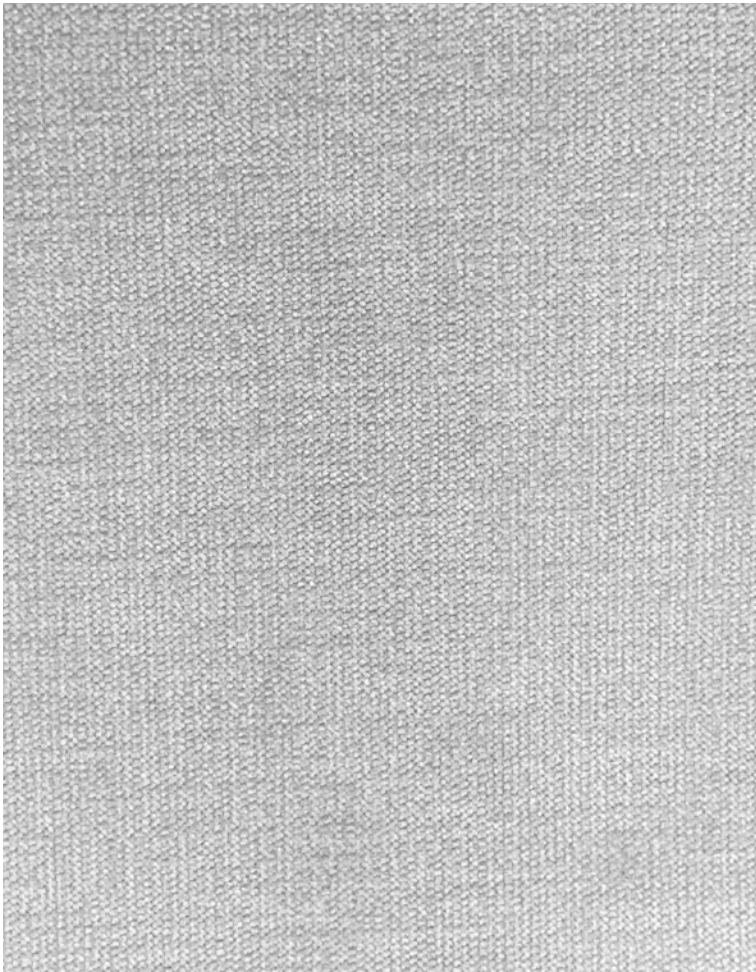


Romance Cream

A soft and durable chenille fabric in a luxurious cream colour.

- Stain and soil resistant
- 100% polyester
- Exceeds 100,000 double rubs
- Cleaning code WS

Order swatches [here](#).



Carson Light Grey

A soft and durable chenille fabric in a light grey colour.

- 80% polyester, 20% nylon
- Exceeds 100,000 double rubs
- Cleaning code S
- Featured on our [Stanton Series](#)

Order swatches [here](#).

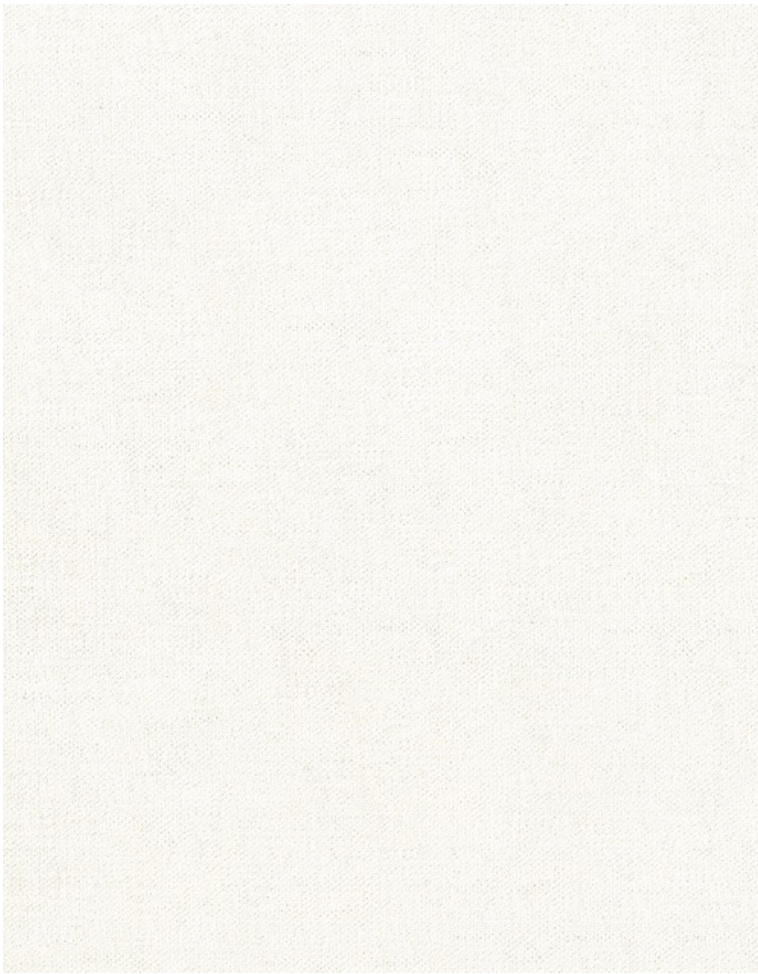


Carson Cream

A soft and durable chenille fabric in a light cream colour.

- 80% polyester, 20% nylon
- Exceeds 100,000 double rubs
- Cleaning code S

Order swatches [here](#).

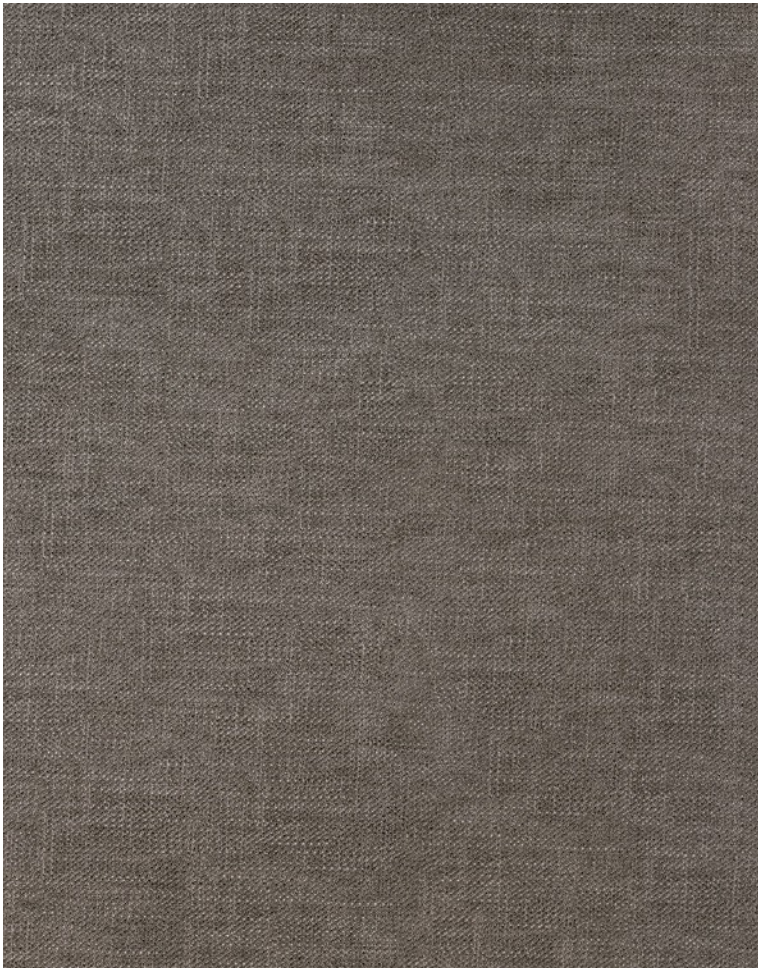


Yates Pearl

A soft linen-wool textured and versatile fabric in a near-white colour.

- 100% polyester
- Exceeds 200,000 double rubs
- Cleaning code W

Order swatches [here](#).



Yates Taupe

A soft linen-wool textured and versatile fabric in a taupe colour.

- 100% polyester
- Exceeds 200,000 double rubs
- Cleaning code W

Order swatches [here](#).



Cartier Artichoke

A luxurious chenille fabric in a unique green colour and rich finish.

- 100% polyester
- Spill and soil resistant
- Exceeds 200,000 double rubs
- Cleaning code W

Order swatches [here](#).



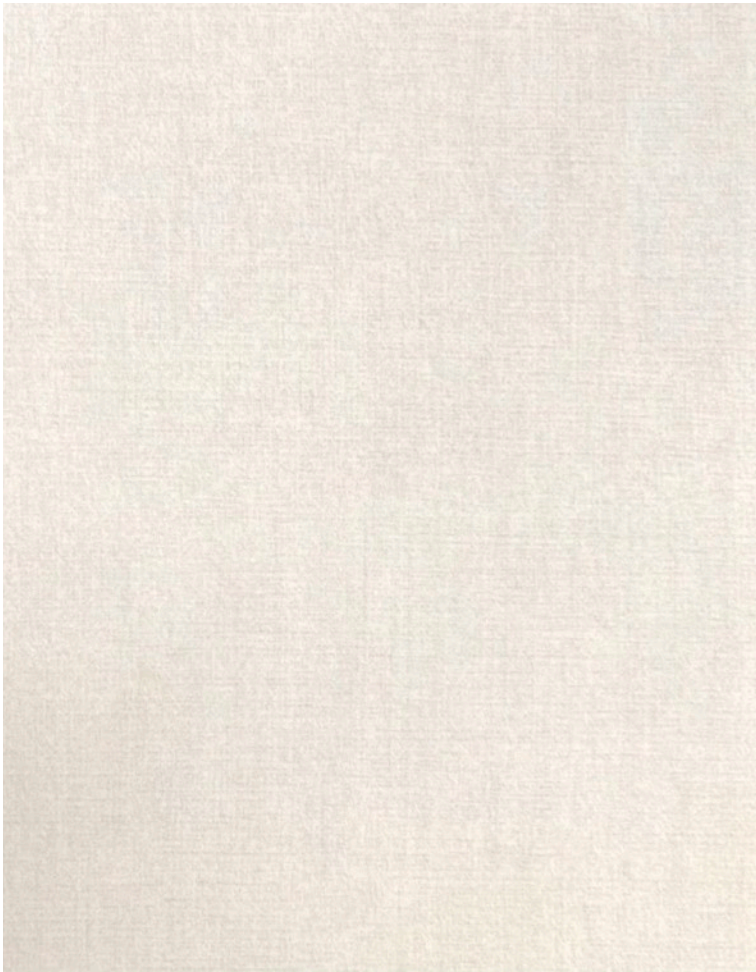
Cartier Ballerina

A luxurious chenille fabric in a unique pink colour and rich finish.

- 100% polyester
- Spill and soil resistant
- Exceeds 200,000 double rubs
- Cleaning code W

Order swatches [here](#).

Velvet Options



Empress Cream

A durable, plush and soft cream velvet.

- Stain and soil resistant
- 100% polyester
- Exceeds 200,000 double rubs
- Cleaning code SW

Order swatches [here](#).



Empress Asphalt

A durable, plush and soft dark grey velvet.

- Stain and soil resistant
- 100% polyester
- Exceeds 200,000 double rubs
- Cleaning code SW

Order swatches [here](#).



Frank Black

A durable, plush and soft solid black velvet.

- 100% polyester
- Exceeds 235,000 double rubs
- Cleaning code W
- Featured on our [Tuxedo Sofa](#)

Order swatches [here](#).



Frank Sage

A durable, plush and soft green velvet.

- Stain and soil resistant
- 100% polyester
- Exceeds 235,000 double rubs
- Cleaning code W

Order swatches [here](#).

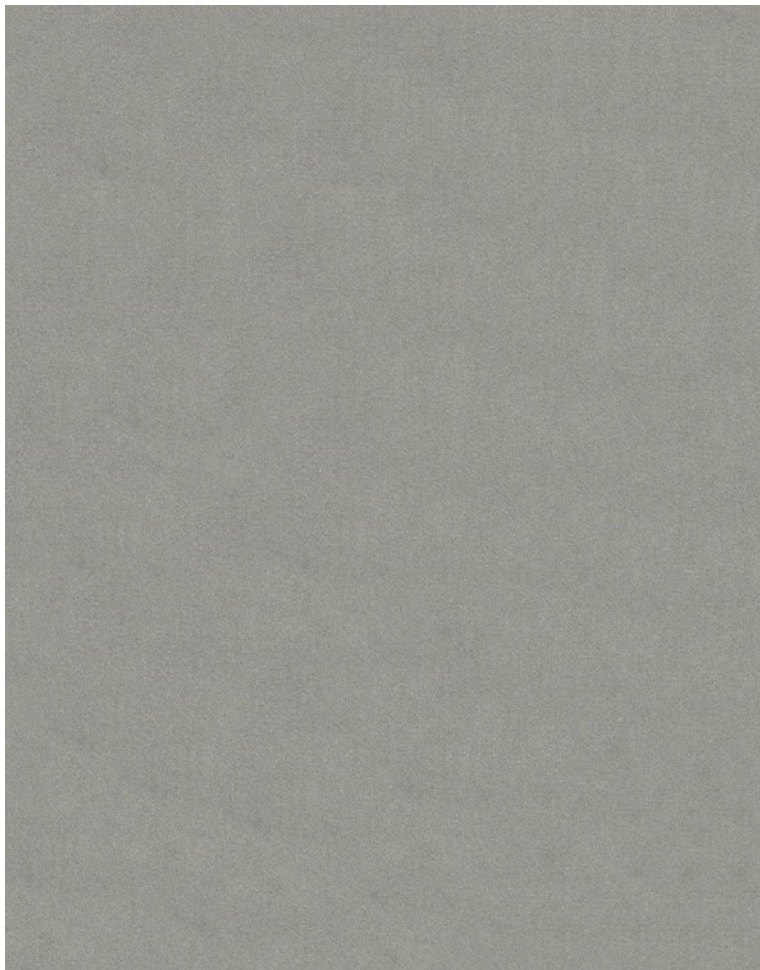


Frank White

A durable, plush and soft solid white velvet.

- Stain and soil resistant
- 100% polyester
- Exceeds 235,000 double rubs
- Cleaning code W

Order swatches [here](#).



Frank Platinum

A durable, plush and soft grey velvet.

- Stain and soil resistant
- 100% polyester
- Exceeds 235,000 double rubs
- Cleaning code W
- Featured on our [Alto Bed](#)

Order swatches [here](#).

Bouclé Options



Felicity Ivory

A durable, plush and high-pile bouclé in a solid ivory/cream colour.

- Stain and soil resistant
- 100% polyester
- Exceeds 160,000 double rubs
- Cleaning code W
- Featured on our [Kirsten Bed](#)

Order swatches [here](#).

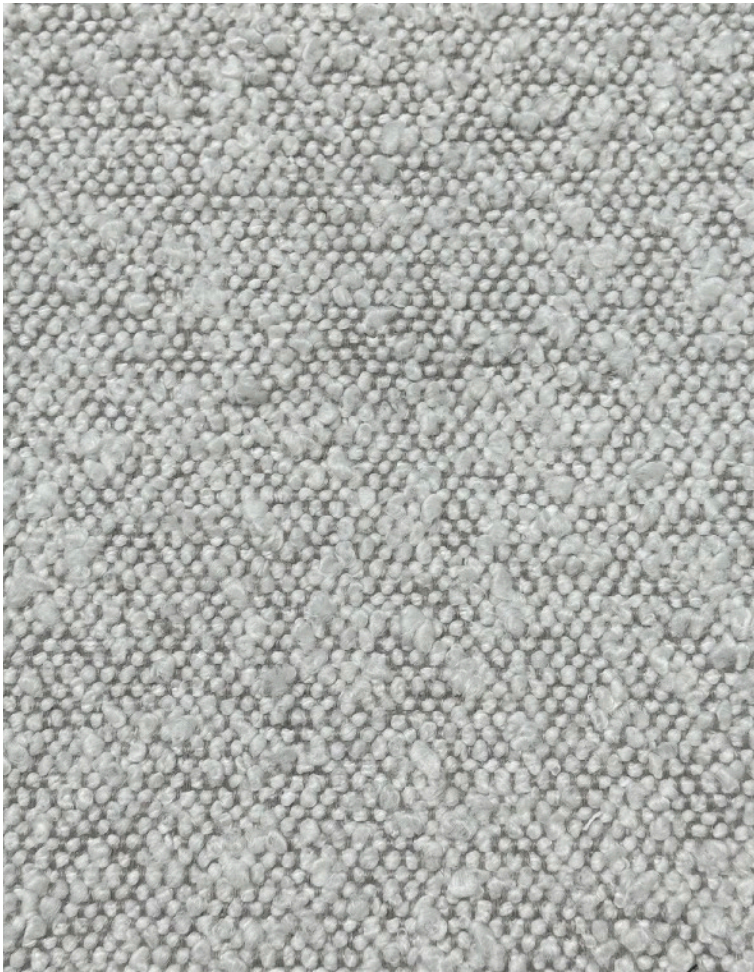


Felicity Onyx

A durable, plush and high-pile bouclé in a solid near-black colour.

- Stain and soil resistant
- 100% polyester
- Exceeds 160,000 double rubs
- Cleaning code W

Order swatches [here](#).



Oris Snow

A durable, plush and high-pile bouclé in a solid off-white pile and contrasting thread.

- Stain and soil resistant
- 100% polyester
- Exceeds 160,000 double rubs
- Cleaning code W

Order swatches [here](#).



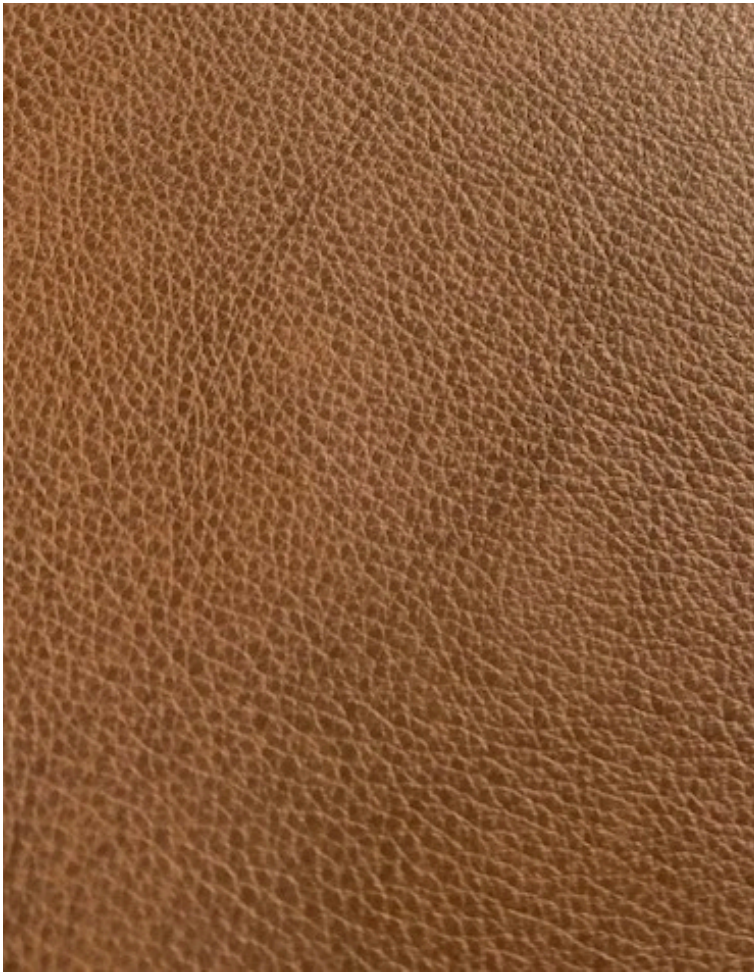
Oris Basil

A durable, plush and high-pile bouclé in a unique green pile and contrasting thread.

- Stain and soil resistant
- 100% polyester
- Exceeds 160,000 double rubs
- Cleaning code W

Order swatches [here](#).

Leatherette Options



Toledo Cognac

A high performance, pebbled faux-leather in a beautiful brown colour.

- Stain and soil resistant
- 100% polyurethane - PVC free
- Exceeds 250,000 double rubs
- Cleaning code W

Order swatches [here](#).



Premier Black

A high performance, pebbled faux-leather in a solid black colour.

- Stain and soil resistant
- 100% polyurethane - PVC free
- Exceeds 500,000 double rubs
- Cleaning code W

Order swatches [here](#).



Premier Grey

A high performance, pebbled faux-leather in a light grey colour.

- Stain and soil resistant
- 100% polyurethane - PVC free
- Exceeds 500,000 double rubs
- Cleaning code W

Order swatches [here](#).



Premier Cream

A high performance, pebbled faux-leather in a light cream colour.

- Stain and soil resistant
- 100% polyurethane - PVC free
- Exceeds 500,000 double rubs
- Cleaning code W

Order swatches [here](#).