

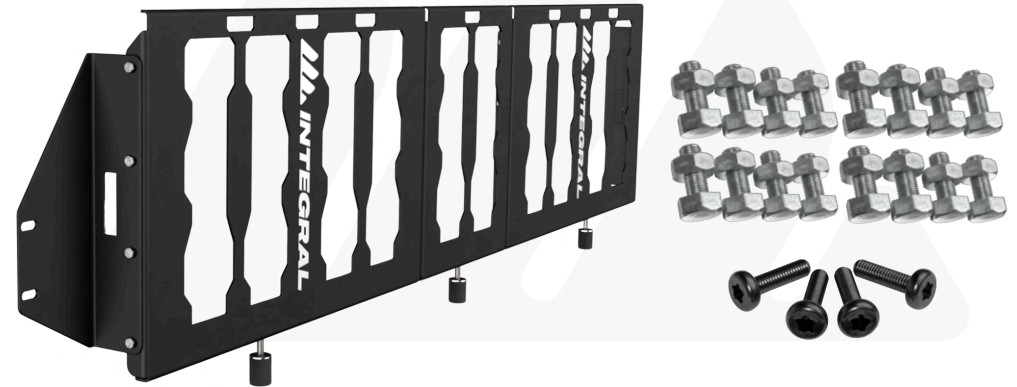


Instructions

FORD BULK HEAD PACKOUT PLATE



OPTIMIZE YOUR TRUCK



Thank you for your purchase!

It's time to upgrade your truck. If there are any issues with your order or any assistance is needed, please contact us at: jake@integraltruck.com

Call or text: **(303) 834-7012** M-F 9am-5pm MST

Package Contents

Contents	Quantity
Packout Plate Full	2
Packout Plate Half	1
Side Mount – Driver Side	1
Side Mount – Passenger Side	1
1/2" Bolts	18 (16 + 2 extra)
1/2" Lock Washers	18 (16 + 2 extra)
Rubber Feet + 1/2" Nut	3
T40 Torx Bit Thread Forming Bolts	5 (4+1 extra)

Required TOOLS

3/8" Drive Ratchet with 1/2" Socket (2" socket extension if the socket is less than 2" long)



3/8" Drive T40 Torx Bit Socket



 Tools not included

Generic Pliers



1/2" Combination Wrench



1 Check the components of the kit.

Ensure it contains all components outlined in the Package Contents chart above.



2 Place all plates and mounts upside-down on a smooth surface and line them up in the correct orientation. The half plate is centered with the full plates on each side. The end mounts and rubber feet can be set aside for now.

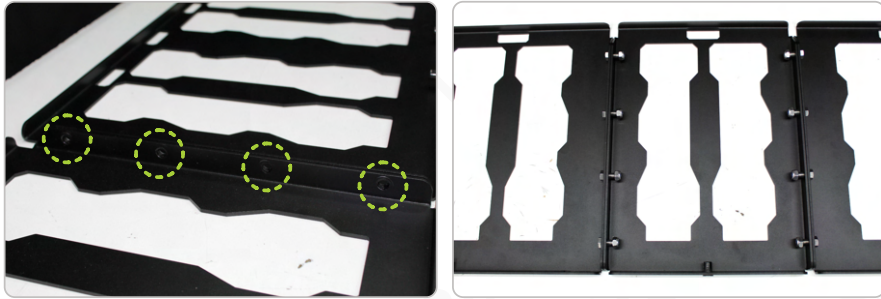


Preferred TOOLS

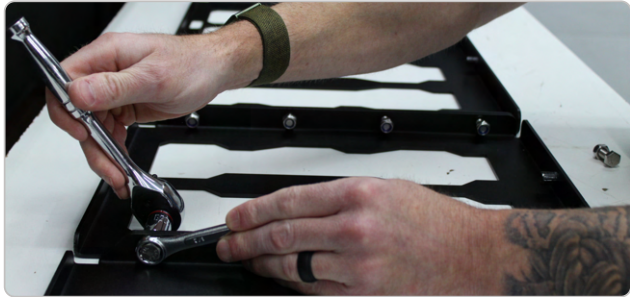
Impact



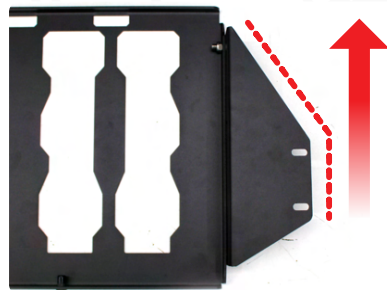
3 Line up all bolt holes with each plate. Assemble the plates using 8 of the M8 bolts and lock nuts. Insert each bolt and hand thread all nuts onto each.



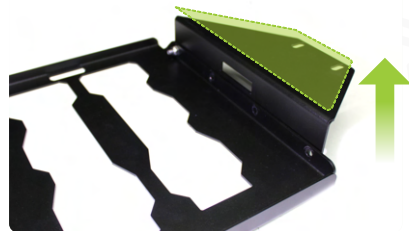
4 Using the ratchet, 1/2" socket, and 1/2" wrench tighten all 8 nuts from top to bottom. Ensure all are snug but do not overtighten.



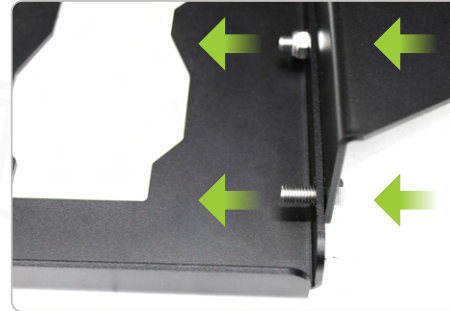
5 Keep the plate assembly upside-down to install the end mounts. Each end mount is different. There's a driver-side and passenger-side version. When mocking them up, the larger angle should be facing the top of the plates.



The highlighted face will be against the bulkhead. Ensure this face is in the below orientation when installing.



6 Insert 4 bolts into each mount. The hex head of the bolt should be on the outside.

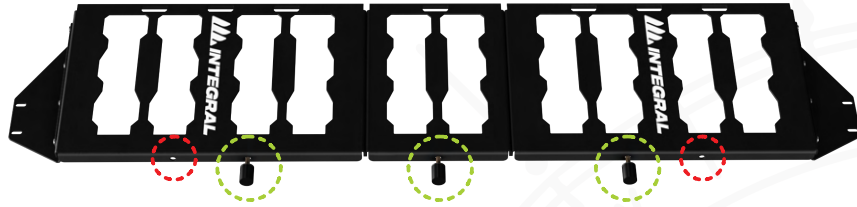


Hand thread each nut and then tighten all from top to bottom using the ratchet, 1/2" socket, and 1/2" wrench. Repeat the process on the other side.

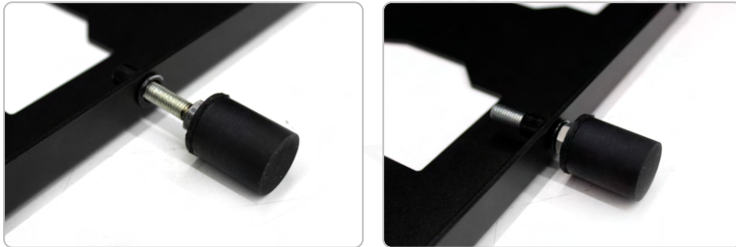
7 Thread all nuts to the base of each rubber foot.



- 8** Thread the 3 rubber feet into the rivet nut on the bottom of each plate. The half plate has only 1 thread location. Each full plate has 2 thread locations. **The foot should be added to each hole that is closest to the center plate:**



Ensure they are threaded all the way in but **do not tighten**. Repeat for all 3.



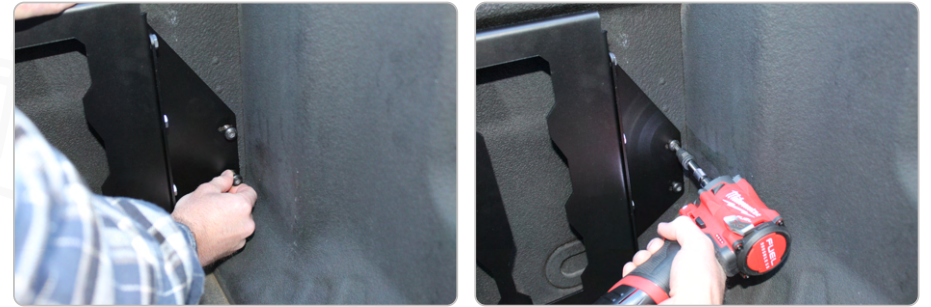
- 9** Remove any accessories or anchors from the factory bulkhead mounts.



- 10** Line up the assembled bulkhead mount to the bed wall.



- 11** Hand thread each T40 mount bolt into the factory, threaded holes. Snug each bolt sufficiently using either a ratchet or an impact. **Do not overtighten.**



- 12** Unscrew each rubber foot by hand until they firmly grip the bed floor. Grip the rubber foot with pliers and tighten the M8 nut to the bottom of each plate with the 1/2" wrench. Repeat for all other feet.



- 13** Enjoy!

