



Instructions FORD F150 & RAPTOR TAILGATE PACKOUT PLATE



OPTIMIZE YOUR TRUCK

BEFORE



AFTER



Thank you for your purchase!

It's time to upgrade your truck. If there are any issues with your order or any assistance is needed, please contact us at: jake@integraltruck.com

Call or text: **(303) 834-7012** M-F 9am-5pm MST

Package Contents

Contents	Quantity
Packout Plate Full – Drivers Side	1
Packout Plate Full – Passenger Side	1
Packout Plate Half	1
8mm Bolts with Washers	7 (6 + 1 extra)
8mm Lock Washers	7 (6 + 1 extra)
T25 Torx Bit Bolts with Washers	9 (8+1 extra)
Spacers	9 (8+1 extra)
Well Nuts	9 (8+1 extra)

Required TOOLS

 Tools not included

1 Check the contents of the kit.

1/4" Drive Ratchet with 8mm Socket (2" socket extension if the socket is less than 2" long)



1/4" Drive T25 Torx Bit Socket



Standard Screwdriver



8mm Combination Wrench



Ensure it contains all components outlined in the Package Contents chart above.



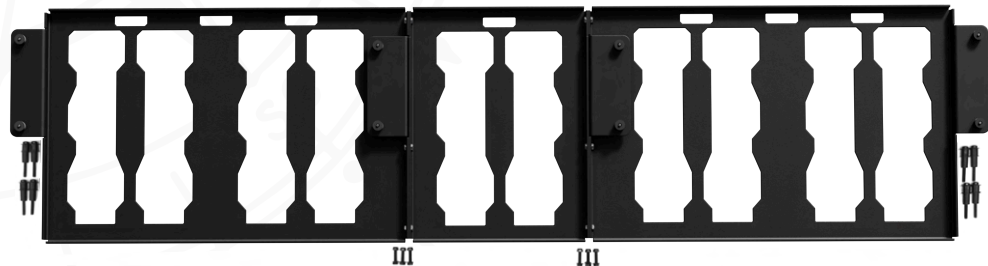
2 Place all plates upside down on a smooth surface. Line them up according to the below photo with the half plate in the center and the full plates on each side.

IF BED HAS SPRAY-ON **BED LINER**

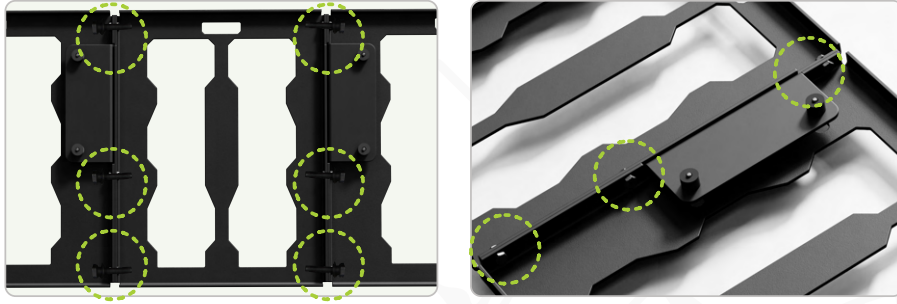
Razor Blade



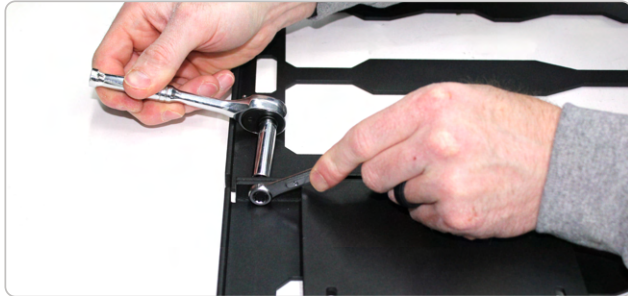
Drill with 1/4" Bit



- 3** Line up all bolt holes with each plate. Assemble the plates using 6 of the 8mm bolts, washers, and lock nuts. Insert each bolt and hand thread all nuts onto each.



- 4** Using the ratchet, 8mm socket, and 8mm wrench tighten all 6 nuts. Ensure all are snug but do not overtighten.



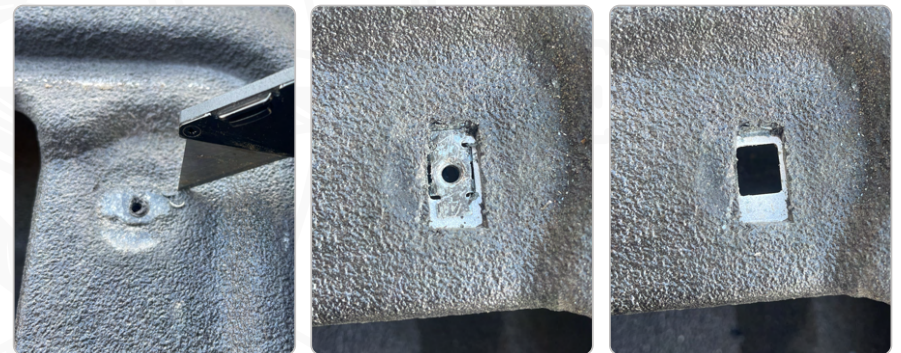
- 5** Using the T25 Torx Bit (Some models have T20 screws), remove all 8 screws and the tailgate access panel.



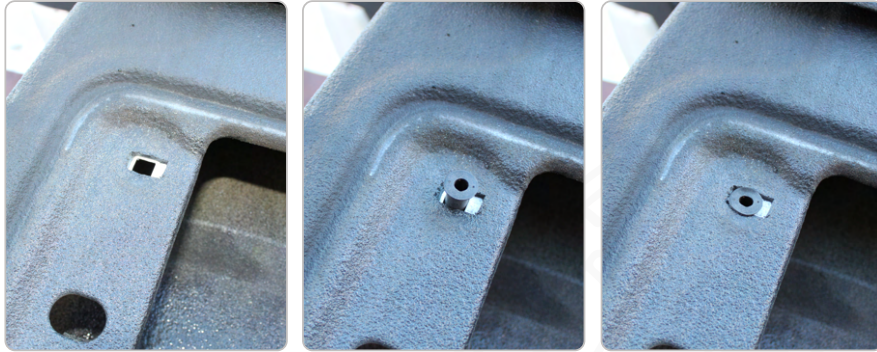
- 6** Locate and remove all 8 screw retainers from the tailgate using a standard screwdriver.



Note: if your tailgate has been bed-lined, first cut away the bed-liner from the screw retainers using a razor blade.



- 7** Insert a well nut into each, existing screw retainer hole. Repeat the process for all 8 holes.



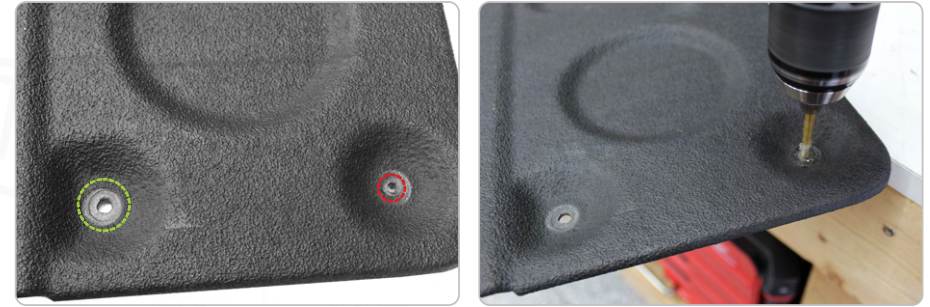
Note: sometimes it's easier to put them in from the bottom of the hole.



- 8** Ensure that each T25 bolt fits through every hole in the access panel.



If your truck has a spray-on bed liner, the bolts may not easily fit through some of the holes. These holes need to be opened up with a drill and 1/4" bit.



- 9** Reinstall the tailgate access panel. Line up all 8 holes with the hole in each well nut. Place the 8 spacers over each bolt hole.



- 10** Place the assembled Tailgate Packout plate over the spacers and line up each bolt hole.



11 Insert the T25 bolts through the mount holes in each plate according to the diagram below.



12 Starting with the outer two mounts, gently hand-thread each bolt into each well nut without applying much downward force to the bolt.

Warning: The well nuts will not be snug in each hole until they are tight. Too much downward force will pop them out of place. If this happens, remove the access panel, and reset it.

The well nuts fully expand and seat when they are tightened.



13 Using the ¼" ratchet and T25 Torx Socket, tighten all 8 bolts. Do not over tighten. Pull up on each plate to ensure all well nuts are fully seated.



14 Add Packout boxes and enjoy!

