



PRODUCT

CATALOG

PHONE: 800.654.8311 • FAX: 405.528.1796

Order on-line at Ellismfg.com

© 2025 Ellis Manufacturing Co., Inc.

In **1948**, Navy pilot and golf enthusiast L.S. "Gunna" Holmboe Jr. graduated from the University of Oklahoma with a degree in Business. Eager to get to work, he started working with his father L.S. Sr. as a maintenance director for 200 rental units. Realizing it was only busy work he soon grew tired of the simplicity of the job and started looking for something more challenging than fixing roofs and mending fences.

L.S. Sr., seeing his son's dissatisfaction, came up with a new project — **to simplify the manufacture of wooden shores using metal clamps**. This new product would eliminate the time spent measuring and cutting lumber to support the form work for pouring concrete and L.S. decided to call it **"The Ellis Clamp,"** so named for "L.S."

Just two **Ellis Clamps** and two pieces of lumber would allow a totally adjustable shore, saving time and money in his construction business. He went to his son with a \$10,000 loan and a proposition – sell the Ellis Clamps and see what comes of it. "But if you go in the red, you can forget it," he said.

L.S. Holmboe Jr. would never forget, needless to say, because the Ellis Clamp took off like a shot. From his basement, L.S. Jr. worked to create the clamps using a machine he designed himself and soon he hired an assistant to help. It was far from the last hire the company would make. Before long, L.S. hired his assistant and a welder to work for him full-time and designed another machine to bend the metal into a rectangular shape. Though his first order was small by today's standards – only 200 – it put him hard at work and in just a week, the Hughes Construction Company had their Ellis Clamps. They were happy to have the product, and they weren't the only ones who saw the exciting future offered by the clamps. "I sent out some sales literature and received a lot of interest," he said. "Including that of my father. Our first large order was from a big contractor named Volpe Construction in Malden, Mass.," he said. "This was a big step, to make 2000 clamps in two weeks."

Now that orders for Ellis Clamps were on the rise, so much so that men worked two shifts daily making clamps, L.S. Sr. started the Ellis Equipment Company, which would later become Ellis Manufacturing Company, Inc, in 1951.

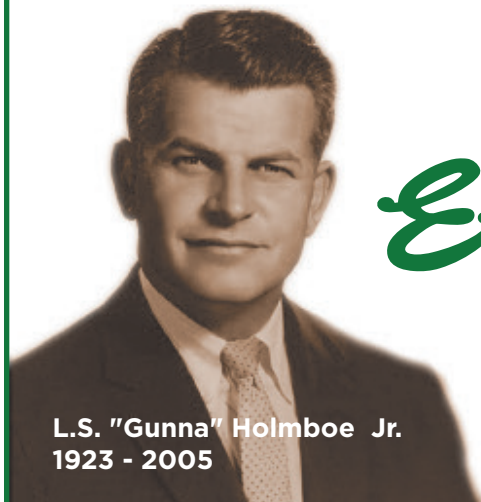
Response for the clamp was so positive that father and son decided to invest in a patent for their invention, specifically allowing only Ellis Manufacturing Co., Inc. to legally make the Ellis 4x4 Shore Clamp with only one weld. In 1956, a new headquarters was built at 4803 N. Cooper Ave. in Oklahoma City to house the growing enterprise. Sadly, before it was completed, L.S. Sr. passed away. Thankfully, he lived long enough to see his dream of operating a family business to come true. L.S. Jr. stayed true to that dream, bringing his first son, Brent Holmboe, into the business in 1973.

Brent served as President and responsible for operations, increasing productivity and expansion of the Ellis Manufacturing line of products until promoting his first son Clay to President in 2016. Today Brents two sons, the 4th generation, Clay and Luke are continuing the family tradition.

Innovation is the key, President Clay Holmboe said. Ellis is dedicated to improving their existing products, developing new tools, ideas, and products for customers, and continuing a legacy of excellence for the construction industry. In addition, as a nimble, family-owned company, Ellis can stay adaptable in their focus on customer satisfaction. "We listen to our customers concerns and are willing to modify our products to fit their needs," President Clay Holmboe said. "Not only do we sell standard shoring, bracing, forming and guardrail materials, but we can also customize products to fit specific needs of our customers." Using on-site punch presses, iron workers and welding machines, Ellis can quickly manufacture standard and customized products at scale. And since Ellis owns their own building and all of the equipment, they can operate with low overhead costs and offer their customers quality products at reasonable prices.

In business since 1951, Ellis has 70 years of experience and expertise to offer customers and looks forward to new challenges in the demanding business of commercial and residential construction, mining and search and rescue industries.

On April 20, 2005 at the age of 81, after months of health complications, and surrounded by his family and friends L.S. "Gunna" Holmboe Jr. passed away. Gunna will always be remembered for having an incredible sense of humor and an exceptional love for his family and friends. His contributions to this company are unprecedented and he will forever be missed.



L.S. "Gunna" Holmboe Jr.
1923 - 2005

ELLIS STEEL SHORES

Installation & Features..... 1
 Sizes & Load Capacities 2
 Stealth Shores3
 Tops & Accessories 4

ELLIS SCREW JACKS

Sizes & Load Capacities7
 Mini Screw Jack..... 8
 Timber Jack..... 8
 Bridge Jack..... 8

COLUMN FORMING CLAMPS

Scissor Bar Clamps 9
 Single Bar Clamps10

TURNBUCKLES

Wall Braces, Kick Braces & Form Aligners..... 11

PIVOT SHORES

Specifications & Data..... 12

ELLIS SHORING SYSTEM

Overview 13
 Specifications & Data..... 14
 Shore Clamps 15
 Jack Wrench 16
 Tops & Accessories 17
 Spacing For Ellis Shores, Purlins & Joists 19
 How To Build The Ellis Shoring System 20

ELLIS GUARDRAIL SYSTEM

Guardrails..... 21
 Guardrails Accessories 22

HORIZONTAL SHORES

Specifications & Data..... 23





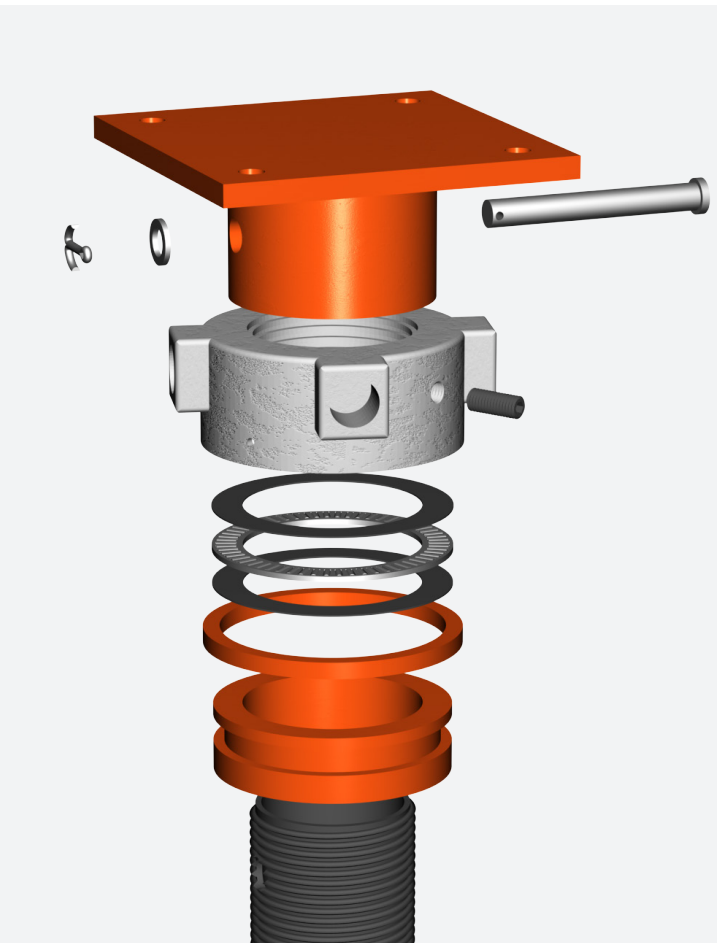
TEMPORARY OR PERMANENT - Use as temporary or permanent support in commercial or residential applications to provide a quick, easy, and safe way to lift and support structures. Available in heights of 10" to over 14' with safe load capacities of up to 80,000 lbs. The Ellis Steel Shores are a great solution for a wide range of applications.

EASY INSTALLATION

To install the Steel Shore, simply turn the nut to raise or lower the screw and top plate. Lastly, lock the adjustment nut using the Safety Lock set screw to prevent further height adjustment of the shore.



The Ellis patented design provides both lifting capacity and load support in one product.

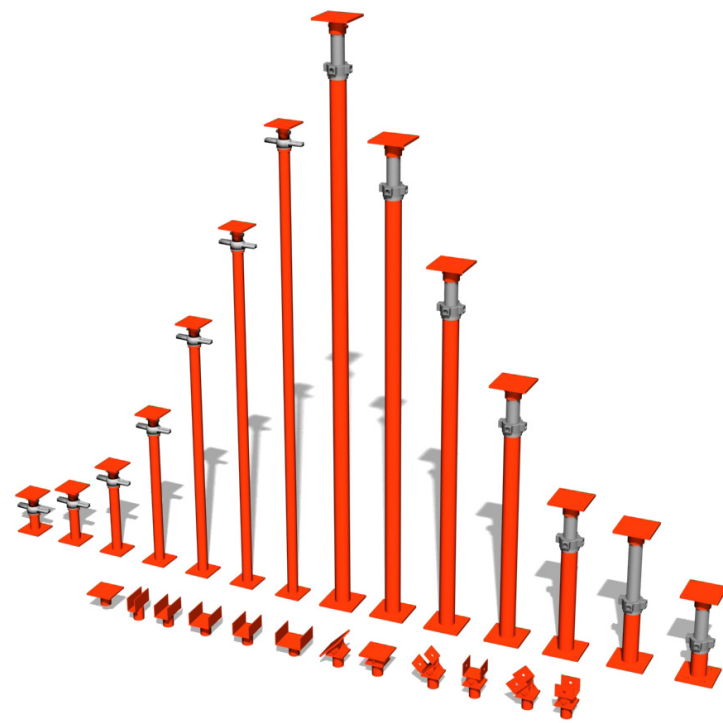


THRUST BEARING & SAFETY LOCK

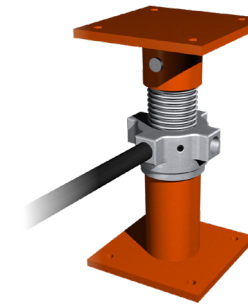
In the illustration, you will notice the thrust bearings inside the adjustment nuts. This patented design, found in the Light, Heavy, and Ultra Duty Steel Shores, greatly reduces the amount of friction caused when adjustment to the nut is made under load and significantly increases its jacking capability.

Unlike the Standard Steel Shore, these with bearings are built as one complete unit to aid in uplift resistance and do not come apart. Furthermore, we've added the Safety Lock set screw in the side of the nut, and when tightened down locks the adjustment handle in place for permanent or long term shoring applications.

The top plate is attached with a clevis pin and interchangeable with different designs (see below). All shoring applications should be properly braced to prevent lateral shifting. Consult with a certified structural engineer for approval of any Ellis Manufacturing Products.



- 10"-176"
- Up to 56,000 safe load (STL-10HD, 2.5-1 F.O.S.)
- Thrust bearings reduce friction during adjustment

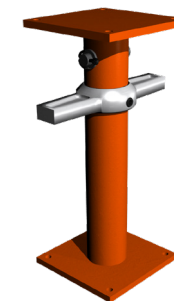


All Ellis Steel Shores feature interchangeable tops with optional custom designs and our Safety Lock.

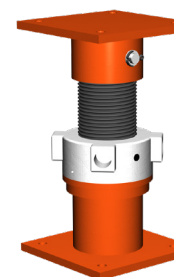
- 10"-134"
- Up to 20,000 lbs safe load (STL-10, 2.5-1 F.O.S.)
- Thrust bearings reduce friction during adjustment



- 13"-133"
- Up to 20,000 lbs safe load (STL-13, 2.5-1 F.O.S.)



- 12"-16"
- Up to 80,000 lbs safe load (BB-12, 2.5-1 F.O.S.)
- Thrust bearings reduce friction during adjustment



HEAVY DUTY LIFTING SHORE

Item #	Adj. Range	Safe Load Capacity	Weight
STL-10HD	10-14"	56,000 lbs	34 lb
STL-13HD	13-20"	52,000 lbs	37 lb
STL-19HD	19-32"	48,000 lbs	43 lb
STL-31HD	31-56"	40,000 lbs	55 lb
STL-55HD	55-80"	34,000 lbs	72 lb
STL-79HD	79-104"	30,000 lbs	88 lb
STL-103HD	103-128"	27,000 lbs	99 lb
STL-127HD	127-152"	26,000 lbs	116 lb
STL-151HD	151-176"	25,000 lbs	131 lb

LIGHT DUTY LIFTING SHORE

Item #	Adj. Range	Safe Load Capacity	Weight
STL-8	8-10"	20,000 lbs	15 lb
STL-10	10-14"	20,000 lbs	16 lb
STL-14	14-22"	18,000 lbs	18 lb
STL-22	22-38"	16,000 lbs	22 lb
STL-38	38-62"	12,000 lbs	32 lb
STL-62	62-86"	8,000 lbs	39 lb
STL-86	86-110"	5,000 lbs	45 lb
STL-110	110-134"	3,000 lbs	52 lb

LIGHT DUTY SHORE (WITHOUT BEARINGS)

Item #	Adj. Range	Safe Load Capacity	Weight
STL-13	13-17"	20,000 lbs	18 lb
STL-19	19-27"	18,000 lbs	21 lb
STL-23	23-35"	16,000 lbs	23 lb
STL-37	37-61"	12,000 lbs	31 lb
STL-61	61-85"	8,000 lbs	38 lb
STL-85	85-109"	5,000 lbs	44 lb
STL-109	109-133"	3,000 lbs	52 lb

ULTRA DUTY LIFTING SHORE

Item #	Adj. Range	Safe Load Capacity	Weight
BB-12	12-16"	80,000 lbs	45 lb



STEALTH SHORES FOR TIGHT SPACES

The Ellis Stealth Lifting Shore is an adjustable structural support system

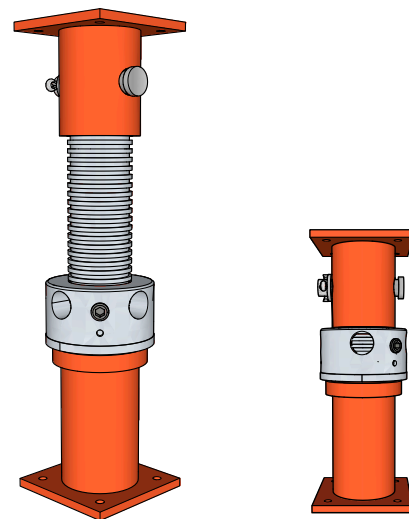
designed to be both strong and narrow. Each Stealth Shore has a max width of 3.5" and is able to fit and be sealed inside a standard 2x4 framed wall. The patented Ellis Thrust Bearing Nut Assembly increases lifting capacity under load by up to 10x. All Ellis Stealth Lifting Shores now come with the 4 lug lifting nut. Used the 3/4" Diameter Steel Adjustment Rod to lift loads up to 20,000 lbs.

The patented Ellis Thrust Bearings on the Stealth Lifting Shores enable these shores to lift up to 10x the amount of load compared to the Light Duty Steel Shores (w/o bearings). Adjustable structural support column for temporary or permanent support with a patented nut housing tiny thrust bearings to allow for easier adjustment under load and jacking weight with significantly less force. Add any length 3/4" Diameter Steel Adjustment Rod for extra leverage and lift up to 20,000 lbs.

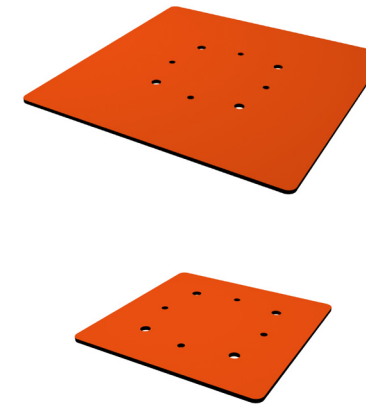


STEALTH SHORES

Item #	Adj. Range	Safe Load Capacity	Weight
STEALTH-3	3.25-4.25"	20,000 lbs	5 lb
STEALTH-4	4-6"	20,000 lbs	6 lb
STEALTH-5	5-8"	20,000 lbs	7 lb
STEALTH-8	8-10"	20,000 lbs	12 lb
STEALTH-10	10-14"	20,000 lbs	18 lb
STEALTH-14	14-22"	18,000 lbs	19 lb
STEALTH-22	22-38"	16,000 lbs	23 lb
STEALTH-38	38-62"	12,000 lbs	25 lb
STEALTH-62	62-86"	8,000 lbs	32 lb
STEALTH-86	86-110"	5,000 lbs	40 lb
STEALTH-110	110-134"	3,000 lbs	45 lb



Ellis STEALTH-3, 4, 5 are not compatible with interchangeable tops.



BASE PLATE EXTENSION

Extend the standard base or top plate of any Light Duty or Heavy Duty Steel Shore with the Base Plate Extension. Hot rolled steel plate with matching mounting holes, relieved corners and baked on powder coat finish. Includes 4 ea. 5/16" diameter x 1" long bolts and matching nuts to bolt plate to top or bottom of steel shores.

Item #	Size	Weight
BASE-12	12 inch	10 lb
BASE-18	18 inch	23 lb



Ellis offers custom fabrication to meet the changing needs of customers. Custom top and shore configurations are available upon request.

10K LEG LEVELING SCREW JACK

The Ellis Leveling Screw Jack for 10K leg shore frames come with a forged wing nut, Acme screw, and 3/8" steel base plate for maximum strength and durability. Available sizes of screw are 12", 18", 22", and 36".

Item #	Size	Weight
BASE-12	12 inch	14 lb
BASE-18	18 inch	14 lb
BASE-22	22 inch	15 lb
BASE-36	36 inch	19 lb

HYDRAULIC JACK

The Ellis Hydraulic Bottle Jacks are a great complement to the Ellis Screw Jacks and Steel Shores. If extra lifting power is needed use one of our 12 Ton or 20 Ton Hydraulic Jacks to assist your heavy lifting needs before shoring with Ellis Jacks.

Item #	Lifting Height	Weight
HJ-12	6-1/8"	17 lb
HJ-20	5-15/16"	24 lb

U-HEAD TOPS

The Ellis U-Head Top for Light Duty, Heavy Duty, or Stealth Shores secures the Steel Shore to a single, double, triple or quad 2x6 joist. Also available for 4x6 and 6x6 beams.

U-HEAD FOR HEAVY DUTY STEEL SHORE

Item #	Inside Width	Weight
STLHD-JH	1-5/8"	5 lb
STLHD-JHD	3-1/8"	5 lb
STLHD-JHT	4-5/8"	6 lb
STLHD-JHQ	6-1/8"	6 lb
STLHD-4x4	3-3/4"	5 lb
STLHD-6x6	5-3/4"	6 lb

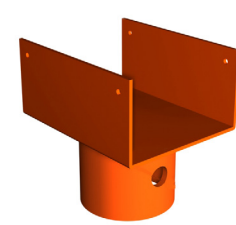
U-HEAD FOR LIGHT DUTY STEEL SHORE

Item #	Inside Width	Weight
STL-JH	1-5/8"	4 lb
STL-JHD	3-1/8"	4 lb
STL-JHT	4-5/8"	5 lb
STL-JHQ	6-1/8"	5 lb
STL-4x4	3-3/4"	4 lb
STL-6x6	5-3/4"	5 lb

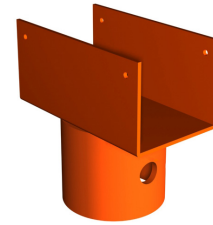
SHORING TRIPOD

The portable steel Ellis Shoring Tripod is a simple and fast way to keep shores upright during the setup process. It is designed to fit a wide range of post shores or shoring props from 1.5" up to a 3.5" nominal 4x4 Ellis Shore. It is light weight and foldable for easy transport and storage.

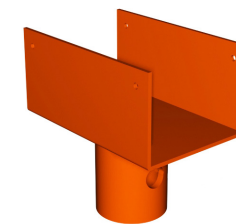
Item #	Finish	Weight
TRI-3	Galvanized	26 lb



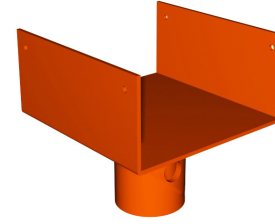
STLHD-JHT



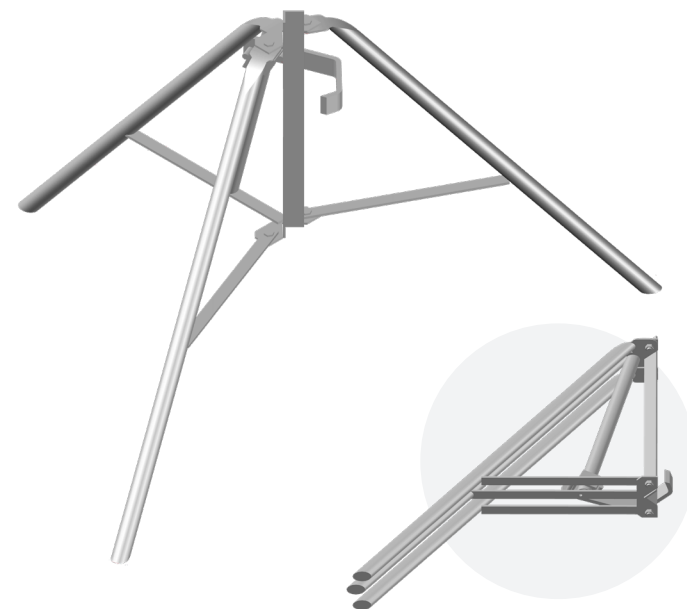
STLHD-JHD



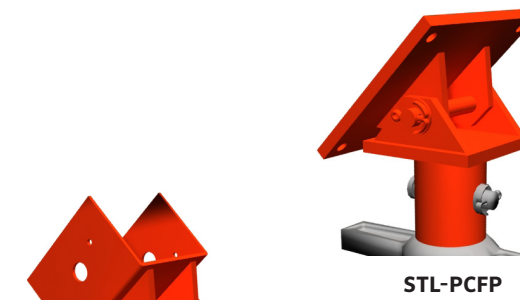
STL-4x4



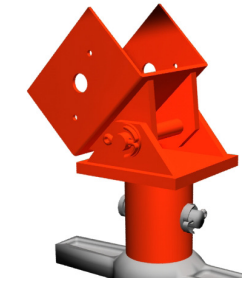
STL-JHQ



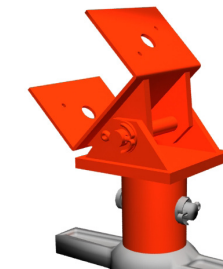
Ellis recommends limiting the lifting load to 20,000 lbs for all Steel Shores. Any higher and bearing damage may occur.



STL-PCFP



STLHD-PCA44



STLHD-PCB44

PIVOTING TOPS

The Pivoting Top is intended to secure the Ellis Light and Heavy Duty Steel Shore to the object being supported and will pivot up to 45 degrees.

PIVOTING TOP FOR HEAVY DUTY STEEL SHORE

Item #	Style	Weight
STLHD-PCFP	Flat Plate	12 lb
STLHD-PCA44	U-Head Parallel	10 lb
STLHD-PCB44	U-Head Perp.	10 lb

PIVOTING TOP FOR LIGHT DUTY STEEL SHORE

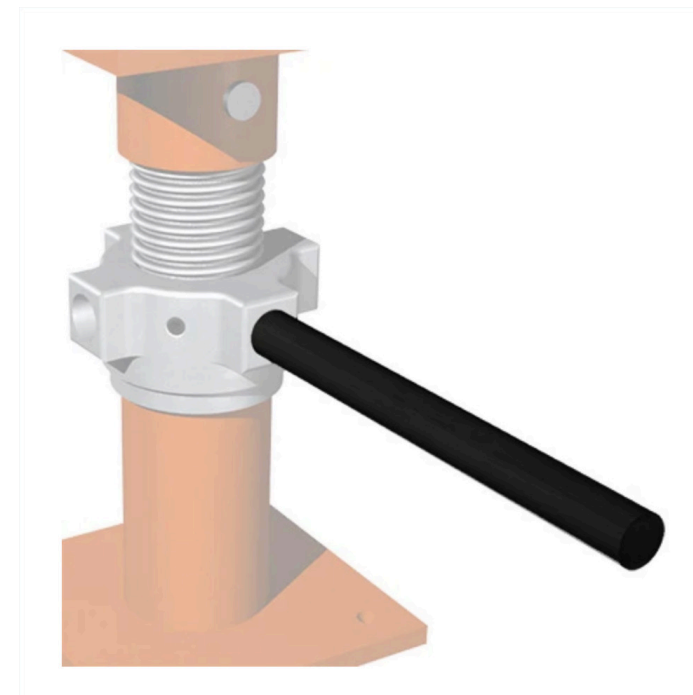
Item #	Style	Weight
STL-PCFP	Flat Plate	5 lb
STL-PCA44	U-Head Parallel	5 lb
STL-PCB44	U-Head Perp.	5 lb

ADJUSTMENT RODS

Adjustment Rods are offered in lengths of 12", 24", 36" and 60" and used to gain extra leverage when making height adjustments. The 1" diameter for Heavy/Ultra Duty Steel Shore and Bridge Jack product lines, and 3/4" diameter for the Light Duty shore and Mini Jack product lines. Simply place one end of the adjustment rod in any of the 4 holes provided and turn.



Ellis offers custom fabrication to meet the changing needs of customers. Custom top and shore configurations are available upon request.



1" STEEL ADJUSTMENT ROD

Item #	Length	Weight
BJTB-12	12"	3 lbs
BJTB-24	24"	6 lbs
BJTB-36	36"	9 lbs
BJTB-60	60"	15 lbs

3/4" STEEL ADJUSTMENT ROD

Item #	Length	Weight
MJ-TB12	12"	1.5 lbs
MJ-TB24	24"	3 lbs
MJ-TB36	36"	4.5 lbs



The Ellis Screw Jack family offers a wide range of options from heavy-duty high load applications to quick and versatile applications. Whether the job is bridge abutment repair or home foundation and sagging floor repair the Ellis Screw Jack family is your solution.

SCREW JACK

The Ellis Screw Jack is a versatile product that will allow you to create an adjustable support of any length with either 4x4 or 6x6 standard dressed lumber. Cut lumber to desired length and slip the Screw Jack over one end and fasten. Each screw jack offers 6" range of adjustment. Add a Shore Top to secure shore to joists, beams, or purlins.

4X4 SCREW JACKS

Item #	Safe Load	Finish	Weight
SJ-4	Up to 15,000 lbs	Powder Coated	12 lb
SJ-4G	Up to 15,000 lbs	Galvanized	12 lb

6X6 SCREW JACKS

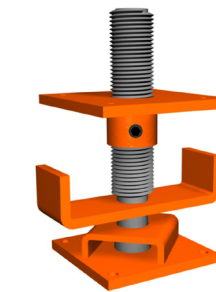
Item #	Safe Load	Finish	Weight
SJ-6	Up to 30,000 lbs	Powder Coated	22 lb
SJ-6G	Up to 30,000 lbs	Galvanized	22 lb

4X4 SHORE LOAD CHART (SJ-4, TJ-4)

Height	Safe Load Capacity
4 ft	15,000 lbs
6 ft	12,000 lbs
8 ft	7,200 lbs
10 ft	5,000 lbs
12 ft	3,000 lbs
14 ft	2,600 lbs
15 ft	-0-

6X6 SHORE LOAD CHART (SJ-6, TJ-6)

Height	Safe Load Capacity
6 ft	30,000 lbs
8 ft	30,000 lbs
10 ft	27,000 lbs
12 ft	20,000 lbs
14 ft	15,000 lbs
16 ft	11,500 lbs
18 ft	8,800 lbs
20 ft	6,000 lbs



MINI JACK

Small and strong. The Ellis Mini Jacks now come with the Ellis patented Thrust Bearings for increased lifting power. Use the Mini Jack Turning Bar to lift and shore. All steel construction with powder coated finish.

Item #	Adj. Range	Safe Load	Lifting	Weight
MJ-3	6.5-9"	15,000 lbs	3,000 lbs	10 lb
MJ-6	9.5-15"	15,000 lbs	3,000 lbs	11 lb

TIMBER JACK

The Ellis Timber Jack is a versatile support that can hold up to 30,000 lbs. Fasten it to the end of a 4x4 or 6x6 piece of lumber to create a shore with 5" of adjustment. The low cost and high load capacity of the Timber Jack ranks it as having the best value in the Ellis Screw Jack family. Each timber jack is 9.125" tall.

Item #	Adj. Range	Safe Load	Weight
TJ-4	5"	Up to 15,000 lbs	10 lb
TJ-6	5"	Up to 30,000 lbs	13 lb

BRIDGE JACK

For a rugged and durable piece of hardware in the Ellis line, none get it done like the Ellis Bridge Jack. With top and bottom plates measuring 1/2" x 9" x 9" for support, the Acme Screw is 2-1/2" in diameter and greased for easy turning and capable of extending a full 3" (BJ-3), 6" (BJ-6), or 12" (BJ-12).

Item #	Adj. Range	Safe Load Capacity	Weight
BJ-3	10-13"	80,000 lbs	50 lb
BJ-6	13-19"	80,000 lbs	60 lb
BJ-12	19-32"	80,000 lbs	70 lb
BJ-21	29.5-50.5"	80,000 lbs	117 lb

SAFE LOAD CAPACITY



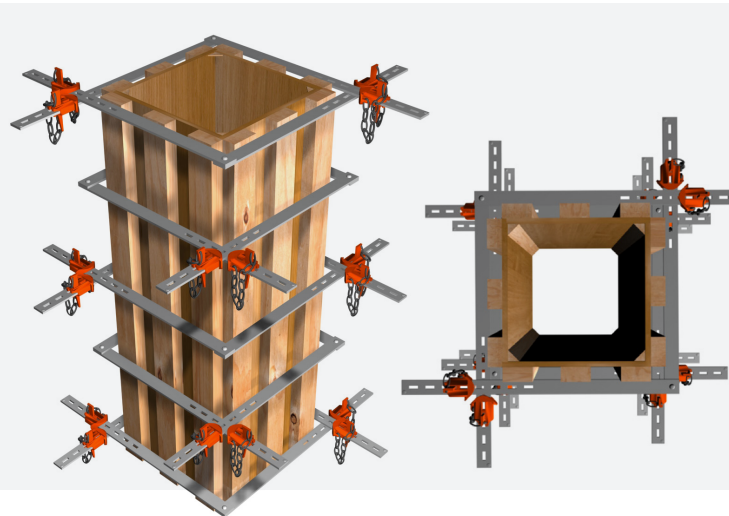
All of Ellis' shoring products are rated with a "SAFE LOAD CAPACITY" or "SAFE LOAD". This rating is determined by testing multiple specimens to destruction, taking the average of that destructive load across the specimens and applying a factor of safety. The factor of safety used for all products is 2.5/1. This means the safe load rating of any given product is 2.5x less than the destructive load, giving you the confidence in performance and safety of all Ellis shoring products.



All Ellis Steel Shores and Screw Jacks come with a Safety Lock. Tighten the Safety Lock to set the shore height in long terms shoring applications.



Ellis Scissor Clamps offer a convenient, efficient, and cost-effective solution for constructing square or rectangular concrete column forms. These units are uniform with no distinction between right or left, up or down. Featuring steel bars, they securely clamp onto wooden forms with ease. Users can adjust the red castings along the bars, insert wedges through matching slots to tighten the clamp snugly against the wood forms. The design incorporates slot spacing to prevent dead spaces, ensuring a tight grip on the form at all times. Disassembly is straightforward: tapping the wedges upward loosens the bars from the wood form.



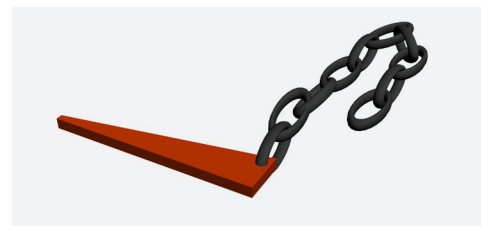
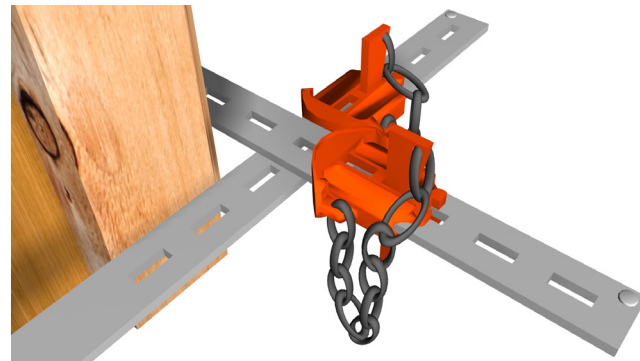
SCISSOR CLAMP

Item #	Bar Size	Column Size**	Weight
CC-38	3/8" x 2" x 38"	10" to 24"	40 lb
CC-26/48	3/8" x 2 1/2" x 26" 3/8" x 2 1/2" x 48"	6" to 12" 10" to 34"	44 lb
CC-38/50	3/8" x 2 1/2" x 38" 3/8" x 2 1/2" x 50"	10" to 24" 12" to 36"	54 lb
CC-48	3/8" x 2 1/2" x 48"	10" to 34"	55 lb
CC-50/50	3/8" x 2 1/2" x 50"	12" to 36"	60 lb
CC-60	3/8" x 3" x 60"	22" to 46"	84 lb

*Column Size is assuming the use of 3/4" panel & 2x6 studs on flat.
†Custom sizes are available at customer's request.

WEDGE CHAIN LINKS

Item #	Weight
WCL-1	0.5 lb

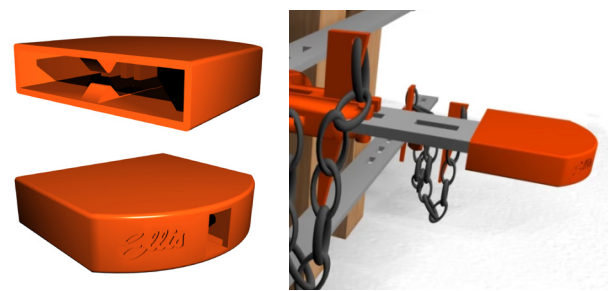


WEDGE CHAIN LINKS

COLUMN CLAMP SAFETY CAP

Secure the ends of your Ellis Column Clamps with the Ellis Column Clamp Safety Caps. The Ellis Column Clamp Safety Cap offers protection from protruding column clamp ends.

Item #	Weight
CCSC-1	0.2 lb



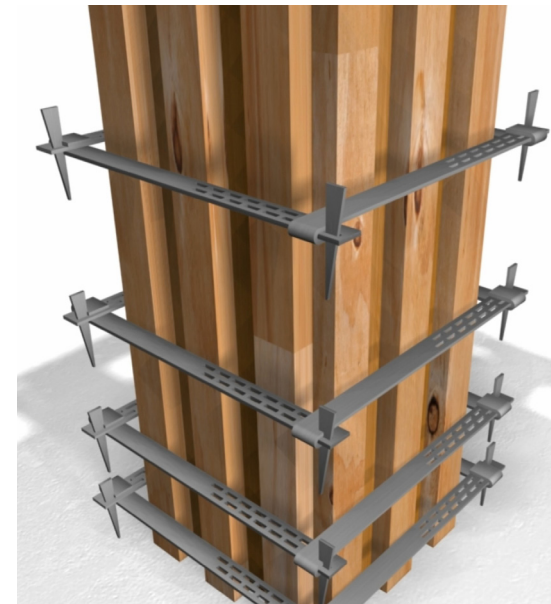
SAFETY CAPS



Custom column clamp sizes are available upon request. Call the Ellis sales staff to order your custom USA made column clamps.



The Ellis Single Bar Column Form Clamp is a simple way to clamp column forms. There are no moving parts and every bar is interchangeable. Only a hammer is needed to assemble the Column Form Clamps. They can be used for square or rectangular columns. 1-1/2" Slots are spaced 1" apart. Hook the bars together and drive the wedge down to tighten each corner. Remove clamps fast with a tap of the hammer for dismantling. Four bars required to complete a set. Each bar can be nested together for storage.



SINGLE BAR

The Ellis Single Bar Clamps are sold individually, each include a wedge. Four bars are needed to complete a set. Clamp bars are made of high carbon steel and are designed for many uses.

Item #	Column Size**	Bar Size	Form Size	Weight
SB-24	9" to 24"	3/8" x 2-1/2" x 39"	13 to 28"	10 lb
SB-36	21" to 36"	3/8" x 2-1/2" x 51"	25 to 40"	14 lb
SB-48	33" to 48"	3/8" x 3" x 64"	37 to 52"	18 lb
SB-60	45" to 60"	3/8" x 3" x 76"	49 to 64"	22 lb
SB-72	57" to 72"	3/8" x 3" x 88"	61 to 76"	26 lb

*Column Size is assuming the use of 3/4" panel & 2x6 studs on flat.
†Custom sizes are available at customer's request.

WEDGE FOR SINGLE BAR

Additional 9" wedge for Single Bar Type Column Form Clamp. Purchase of each single bar column clamp includes one wedge, however; this is offered as an additional wedge to replace missing or damaged wedge.

Item #	Weight
SBW-1	.75 lb



SINGLE BAR



SINGLE BAR WEDGE

NEED HELP DESIGNING YOUR COLUMN FORMS?



Go to our website and check out the Ellis Column Form Designer App. Its free to use and gives you all the information you need to build Ellis column forms, including number of clamps needed and appropriate spacing. Go to the link below or use the QR code with your smartphone to access the mobile version!

<https://ellismfg.com/pages/column-clamp-spacing-calculator>





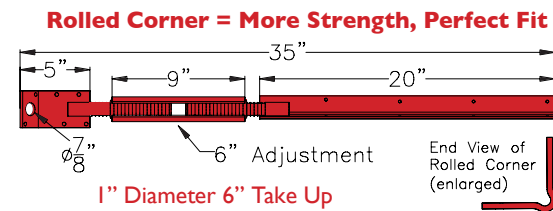
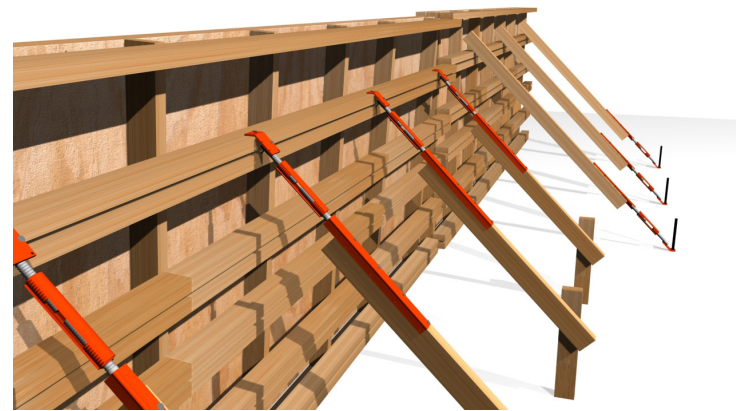
Perfectly align formwork before you pour with the Ellis Turnbuckles. Three types available, all come with 1" diameter self-cleaning coil threads to help protect and prolong the performance of the turnbuckle. Full length welds to insure strength when bracing. Formwork stays plumb with Ellis Turnbuckles.

WALL BRACES WITH BENT PLATE

The Ellis Wall Brace can be attached quickly to the top or bottom end of a 2x4 to secure forms during pouring. The rolled corner of the angle iron allows the Ellis Wall Brace to fit snug against the 2x4 lumber thus providing increased strength to the brace. Bracing and alignment are fast and sure with Ellis Wall Braces.

- 1" self-cleaning coil threads with 6" adjustment
- Standard 45 degree angle end will accept 3/4"-7/8" dia. stake
- 2" long welds insure strength

Align concrete forms for walls, columns or beams easily with Ellis Wall Braces.

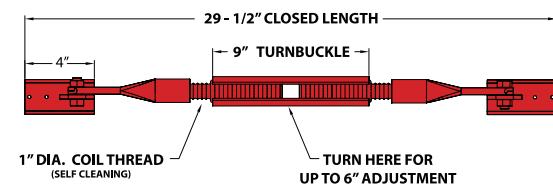


Item #	Weight
WB	8 lbs

KICK BRACE

The Ellis Kick Brace can be attached quickly by nailing two nails in each end plate. The ends swivel 180 degrees freely to allow brace to be placed at any angle. Use rebar, screw driver, etc. to quickly adjust the turnbuckle to lengthen or shorten the Kick Brace. 1" Diameter self-cleaning coil threads help protect and prolong the performance of the turnbuckle. Full length welds insure strength when bracing.

Quickly align edge forms, drop beam sides, and low wall forms with the Ellis Kick Braces.



Item #	Weight	Safe Load
KB-1	10.5 lbs	2,800 lbs



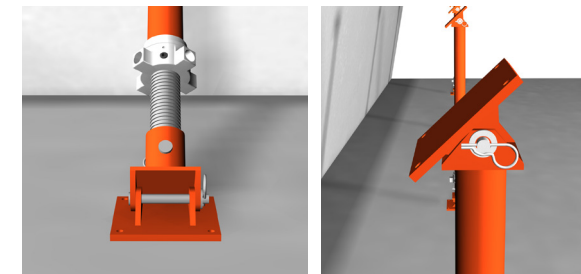
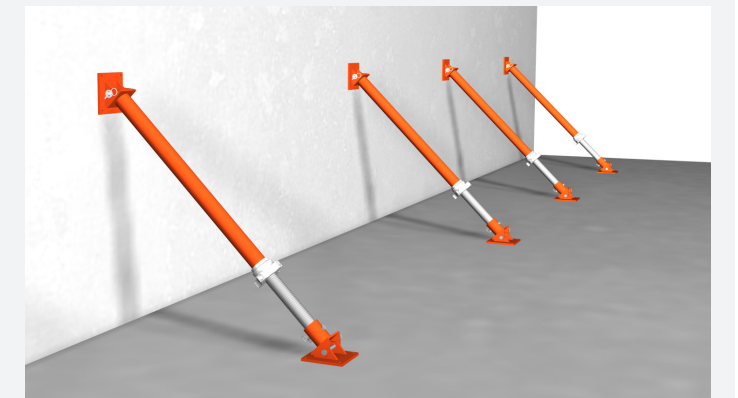
FORM ALIGNER WITH FLAT PLATE

The Ellis Form Aligner's primary use is for column and wall form support. Attach to the end of a 2x4 to secure forms during placement of concrete.

Item #	Weight
FA	8 lbs



The Ellis Light Duty Pivot Shore is a patented adjustable structural support system with flat plate pivoting ends designed to support a load at an angle. The Pivot Shore has the patented Ellis Lifting Nut assembly that dramatically reduces friction while adjusting the length of the shore under load. Each end of the Ellis Pivot Shore has a pivoting flat plate that pivots 45 degrees in each direction. These lifting shores can be used in temporary or permanent installations.



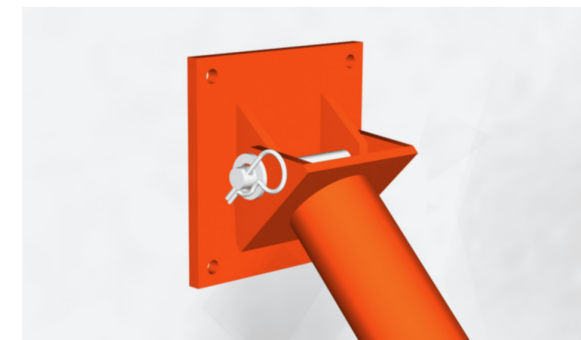
PIVOT SHORE

The Ellis Light Duty Pivot Shores can cover a range of 27 to 67 inches and have pivoting flat heads that can move 45 degrees in each direction.

Item #	Adj. Range	Weight
STL-P43	43-67"	38 lbs
STL-P27	27-43"	30 lbs



For correct spacing of pivot shores, please call 1.800.654.8311 and request a pivot shore spacing chart.





Ellis SAFE, FAST, AFFORDABLE
TAILOR THE ELLIS SYSTEM TO MEET YOUR NEEDS

The Ellis Shoring System is a staple of the concrete framing industry. It is the most customizable and versatile system on the market. Use the same Ellis Equipment on different types of jobs in quick succession. The Ellis System also boasts the lowest upfront cost and provides lasting value through hundreds of uses. The Ellis 'Up & Down' Faster Method is a job-proven speed advantage, shores simply slip into place. Its speed, versatility, affordability, and tenure in the field make it a top choice for contractors all over North America.

SAFE! NEVER BROKE

The chart to the right shows the results of a laboratory test performed on an 11' Douglas Fir #1 Ellis Shore. Deflection was measured as increasing load was applied. 20,000 lbs of load was added and the Ellis Shore never broke!

Load per Shore - lbs	Vertical Deflection - 2 Clamps/Shore
1,000	0.000"
2,000	0.005"
3,000	0.021"
4,000	0.063"
4,500	0.092"
5,000	0.127"
6,000	0.172"
7,000	0.213"
8,000	0.249"
9,000	0.319"
10,000	0.449"

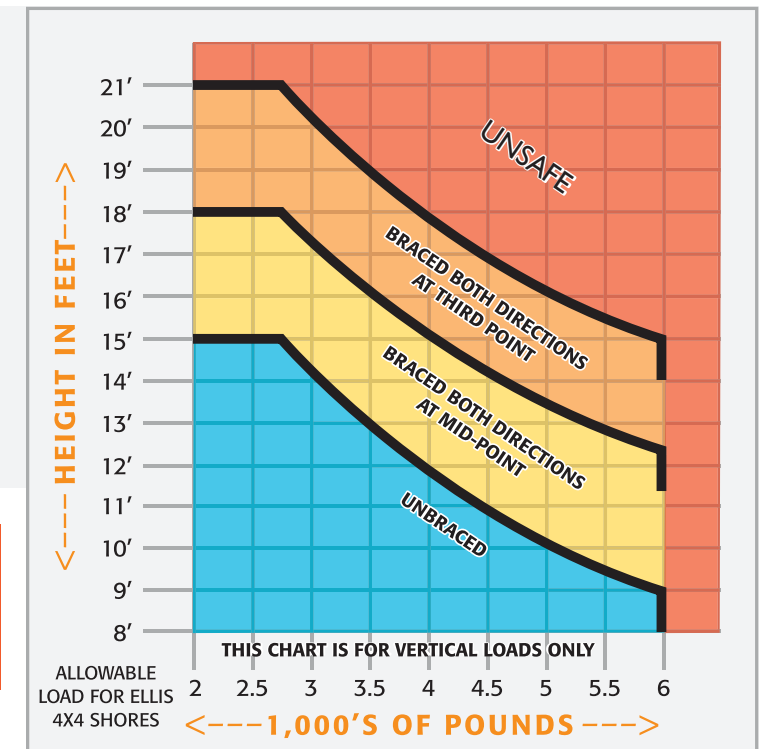
ALLOWABLE LOAD CHART

Allowable maximum value of 6,000 lbs. per shore is based upon a safety factor of 2.5 to 1, against failure of the mechanical mechanism of splice joint.

ALLOWABLE LOAD: Table to the right is based upon allowable unit stresses of 1,500 lbs. per sq. in. for wood members of DF#1 or SYP#1, free of knots. This table is based upon approved engineering standards, but does not compensate for unusual conditions. Tested Under Loads from 3,000 to More than 20,000 lbs.



Detailed laboratory load reports of DF#1 and SYP#2 Ellis Shore configurations are available for purchase. Contact the Ellis Sales team for info.



CUSTOMIZABLE AND VERSATILE

The Ellis System is infinitely customizable and can be configured to meet the most complex job requirements. Tailor the Ellis System before construction begins and make adjustments other systems can't during or after setup.

The Ellis System utilizes standard nominal lumber that can be sourced from any lumber yard or mill of the users choosing. Pair the lumber with Ellis Clamps and Ellis Shoring Accessories and the system is complete.

Just two Ellis Clamps and one Shore Cup are required for each shore placement. Ellis Clamps permanently attached with duplex nails to the lower shore member and the upper shore member adjusts freely. Use Ellis Purlin Splicers and Shore Cups to create a custom modular system that can be setup and taken down hundreds of times.

ELLIS SHORE SAFE LOAD CAPACITY

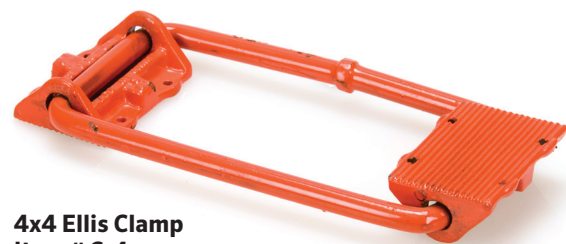
Total Shore Height (ft)	Lower Shore Member (ft)	Clamp Spacing (in)	Ellis Shore Maximum Safe Working Load (lbs)					
			2x4	3x4	4x4	4x6	6x4	6x6
18'	7'	18"	0	0	0	3,200	3,200	7,200
16'	7'	18"	0	0	0	3,200	5,600	10,400
14'	7'	18"	0	0	3,000	4,000	7,200	13,600
12'	6'	12"	600	2,000	4,400	6,000	9,600	13,600
10'	6'	12"	1,000	3,000	6,000	8,000	12,000	16,000
8'	6'	12"	1,500	4,000	6,000	9,600	16,000	16,000
6'	4'	12"	1,800	5,000	6,000	9,600	16,000	16,000

The above chart is based on ACTUAL load tests and includes a 2-1/2 to 1 safety factor. Data not for construction without approval from a certified structural engineer.

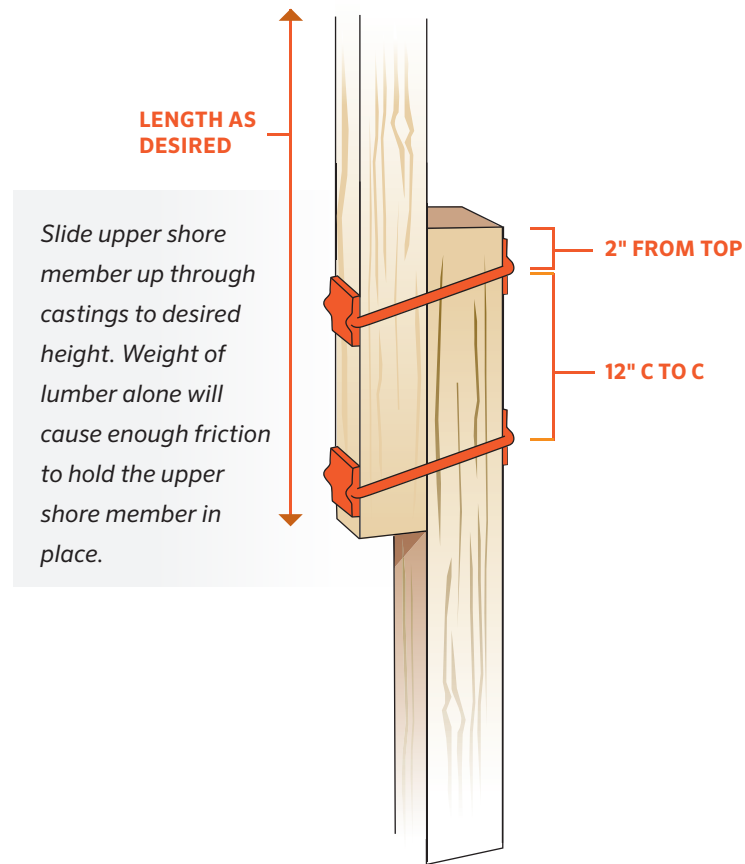
ELLIS SHORE CLAMPS

The patented Ellis Shore Clamps allow for a quick and easy way to create a totally adjustable support system with two pieces of nominal lumber. Attach Ellis Clamps to lower shoring member and the upper member adjusts up and down FAST!

Item #	Lumber Size	Weight
C-2	2x4	2.5 lb
C-34	3x4	2.5 lb
C-4	4x4	3 lb
C-42	4x2	3 lb
C-46	4x6	4.5 lb
C-64	6x4	8 lb
C-6	6x6	11 lb



4x4 Ellis Clamp
Item # C-4

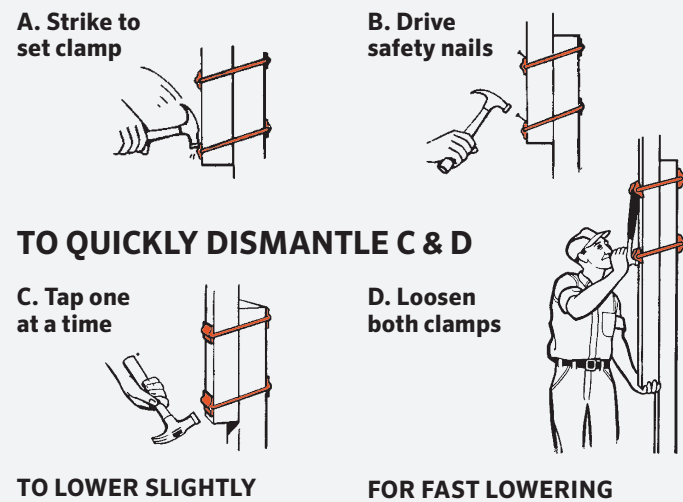


Slide upper shore member up through castings to desired height. Weight of lumber alone will cause enough friction to hold the upper shore member in place.

HOW TO USE ELLIS SHORES

First, get the proper length lumber to make an Ellis Shore of the desired height—that being a 6' or 7' lower shore member and an upper shore member of the proper length. The sketches at the right give some suggestions for best results in the operation of Ellis Shores. Adjustments are made by raising the upper shore member to the approximate shore height, final adjustment is made with the Ellis Jack wrench (see page 14). When the desired height is obtained, the clamps should be tapped down (a hammer lug is provided on the clamp casting) to seat them and a safety nail is driven in the shore above each casting. This nail does not support any load, but simply keeps the clamps from vibrating loose.

ONCE DESIRED HEIGHT IS OBTAINED FOLLOW STEPS A & B



TO LOWER SLIGHTLY

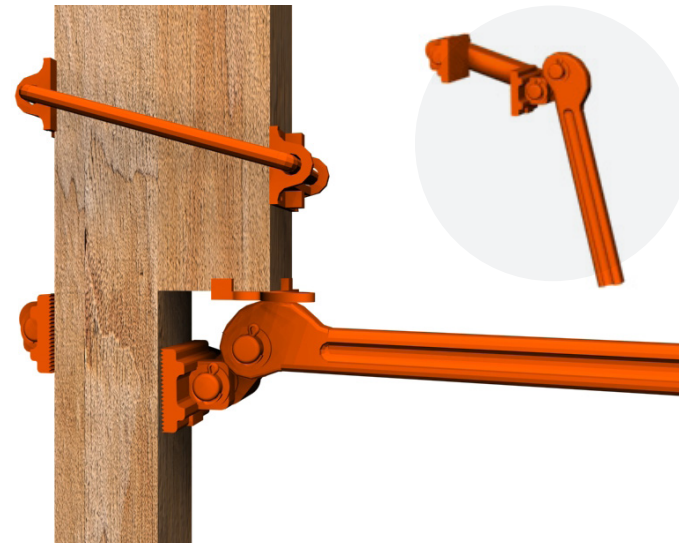
FOR FAST LOWERING



FAST AND EASY SHORE HEIGHT ADJUSTMENT

The Ellis Jack Wrench is the fastest way to level and adjust the Ellis Slab Formwork System. Only a few Ellis Jacks are needed around the job – one for each 100 or even 200 shores. One workman, using the Ellis Jack Wrench, can level shores by himself. He simply holds the Jack Wrench by the handle with one hand, slips it onto the lower shore member just below the bottom of the upper member, using the other hand to guide the back plate into position. Then he jacks the handle one stroke, which raises the upper member and the form it is supporting about 1-inch. He jars the back plate of the jack wrench loose and slips it up into position for the next stroke.

Time required for each stroke is about 5-seconds. A story pole and level line may be used for measuring story height to which form must be adjusted. NOTE: The Ellis Jack Wrench is not used for lowering forms. This is done by simply tapping Shore Clamps one at a time with hammer. Nor is the hand Jack recommended for lifting loads of over 1,400 lbs. (Such as forms and concrete which require correction).

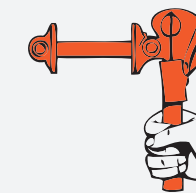


ELLIS JACK WRENCH

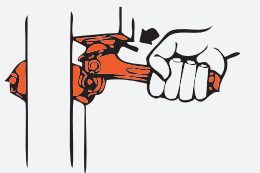
The Ellis Jack makes leveling of shores and purlins simple. The Jack grips the wood of the lower shore member and the upper shore member is raised about one inch per stroke through the lifting pressure of the cam at the anchored end of the Jack handle.

Item #	Lumber Size	Lift	Weight	Compatible
H-2	2x4 or 4x4	1400 lbs	9 lb	2x4, 3x4, 4x4
H-4	4x4	1400 lbs	17 lb	3x4, 4x4, 6x4
H-6	6x6	1400 lbs	30 lb	4x6, 6x6

Ellis Jack is positioned on the shore and removed quickly because one side of the Jack is open. Held by one hand.



Bearing plate attached by cable... ready for use in lifting heavier loads. Makes lifting easier and saves lumber from destruction, because cam bears against metal rather than wood.



Lift handle to raise shore and re-grip Jack to the Ellis Shore after each stroke.



May be applied either below the upper member (left) or above lower member (right).





SHORE TOPS FOR EVERY JOB

Make secure positive connections with Ellis Shore Tops. Ellis offers shore tops for a variety of uses. Use them as components of a large shoring system or specifically for individual support solutions. The Ellis Shore Tops fit standard nominal sized lumber (2x4, 4x4, 4x6, 6x6) or aluminum beam.

ELLIS SHORE HOLDER

The Ellis Slip-In Shore Holders saves a tremendous amount of time and labor. Just attach 'SH's' at desired distance apart along the purlin, with duplex nails, and they are ready to receive adjustable Ellis Shores. Ellis Shores simply slip in.

Item #	Size	Weight
SH-WH4	4x4 Wirehead	1.5 lb
SH-4C	4x4 Cup Type	1.5 lb
SH-2C	2x4 Cup Type	1.5 lb
SH-4CA	For Aluminum Purlins	2 lb



PIVOTING SHORE CUP

Ellis Pivoting Shore Cup will swivel from 0 - 45 Degrees, eliminating the need to shim between Ellis Shore and purlin/stringer. Perfect when used to support formwork for pouring ramps, stairs and jobs requiring shores to be erected on angle.

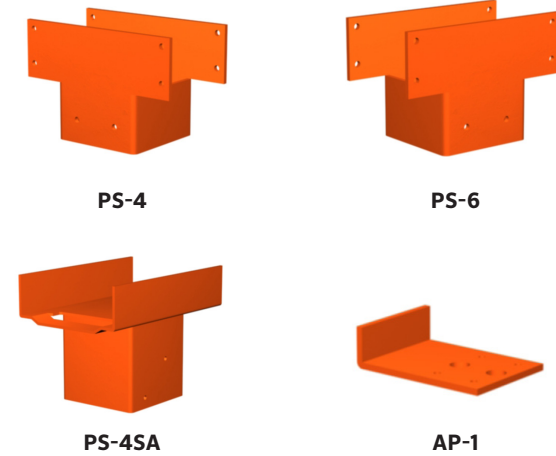
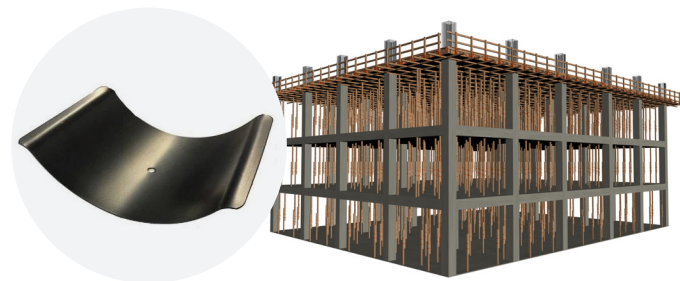
Item #	Size	Weight
PC-A44	Parallel	1.5 lb
PC-B44	Perpendicular	1.5 lb
PCFP-44	Flat Plate 4x4	1.5 lb
PCFP-66	Flat Plate 6x6	2 lb



RESHORE SPRING

Keeping your shore tight against any slab is made easy during reshoring with Ellis Reshore Springs. Now with a new durable corrosion resistant coating.

Item #	Size	Weight
RSP-1	3.5 x 5	0.19 lb



PURLIN SPLICER & SLOTTED SPLICERS

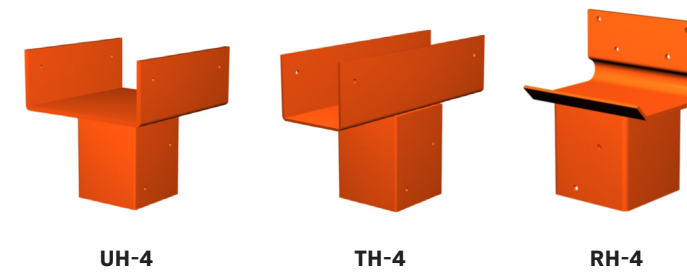
This product assures a good safe joining of purlins to an Ellis Shore.

Item #	Size	Weight
PS-2	2x4	2.75 lb
PS-4	4x4	3.5 lb
PS-6	6x6	10 lb
PS-4S	Lumber	5 lb
PS-4SA	Aluminum	6 lb
AP-1	Angle Plate	14 oz

U-HEAD, T-HEAD, & RED HEAD

Reduce time spent cutting stringers/purlins to specific length allowing two standard cut 4x4/4x6 Purlins to sit side by side.

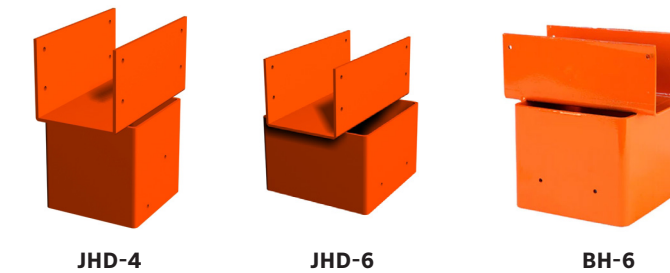
Item #	Size	Weight
UH-4	4x4	10 lb
TH-4	4x4	8 lb
RH-A	4x4	4.5 lb



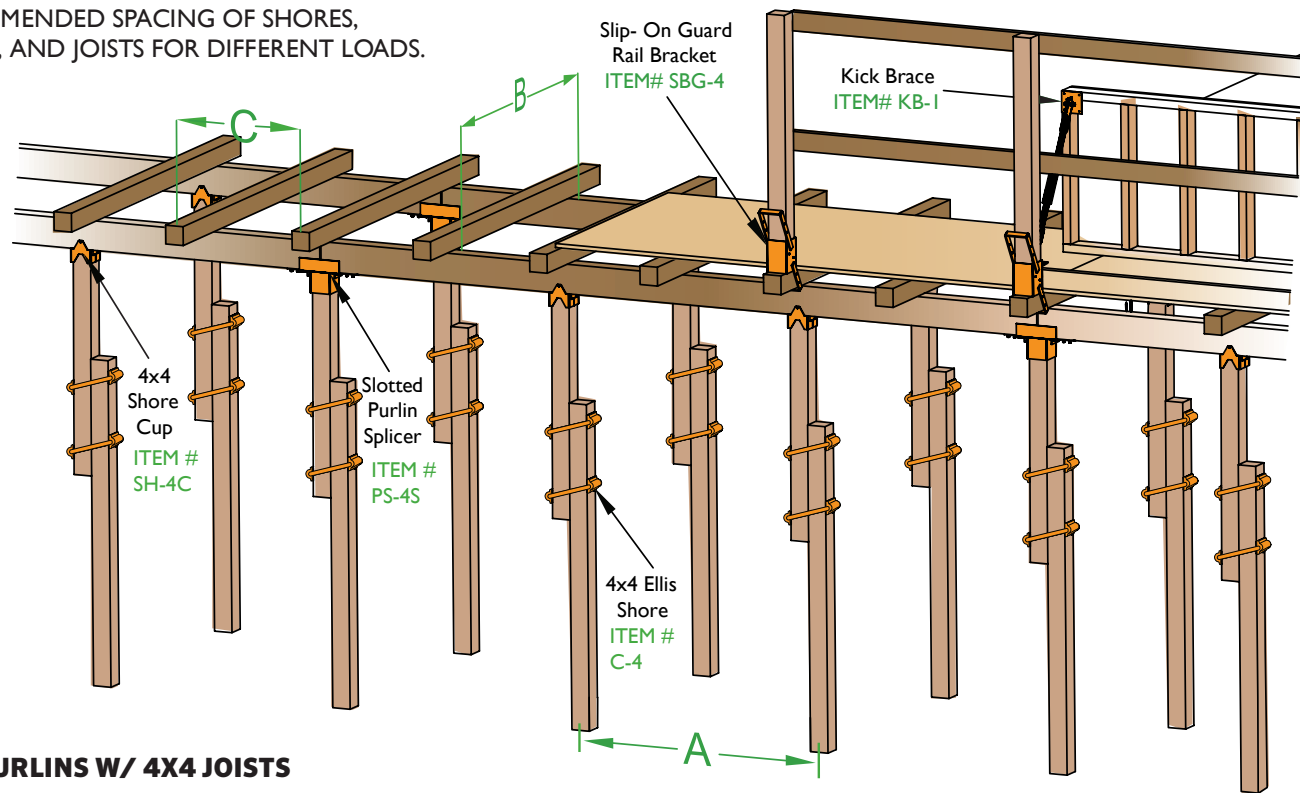
JOIST & BEAM HOLDERS

Ellis Joist Holders are the best way to secure 4x4 or 6x6 nominal posts to 2x joists.

Item #	Post Size	Size	Weight
JH-4	4x4	Single 2x6	4 lb
JHD-4	4x4	Double 2x6	4 lb
JHT-4	4x4	Triple 2x6	4.5 lb
JHQ-4	4x4	Quadruple 2x6	5 lb
JH-6	6x6	Single 2x6	8 lb
JHD-6	6x6	Double 2x6	8 lb
JHT-6	6x6	Triple 2x6	8 lb
JHQ-6	6x6	Quadruple 2x6	9 lb
BH-6	6x6	Single 4x6	8 lb



RECOMMENDED SPACING OF SHORES, PURLINS, AND JOISTS FOR DIFFERENT LOADS.



4X6 PURLINS W/ 4X4 JOISTS

Slab Thickness	A	B	C
4" or under	5'0"	6'0"	2'0"
5" to 7"	5'0"	5'0"	2'0"
8" to 9.5"	4'6"	5'0"	2'0"
10" to 12"	4'0"	5'0"	1'8"
13" to 14"	4'0"	4'6"	1'8"

4X4 PURLINS W/ 4X4 JOISTS

Slab Thickness	A	B	C
4" or under	4'0"	5'0"	2'0"
5" to 7"	4'0"	4'0"	2'0"
8" to 9.5"	4'0"	3'0"	2'0"
10" to 14"	3'6"	3'0"	1'8"

Douglas Fir, Construction Grade Joist and Purlins. 3/4" Plywood held strong way over Joists with face grain parallel to span. Maximum deflection L/360.

Plywood decking graph indicates suggested spacing of plywood supports joists at certain slab thicknesses using 5/8" or 3/4" plywood. Solid and dotted lines indicate the deflection of the span at corresponding slab thicknesses and plywood support spacings.

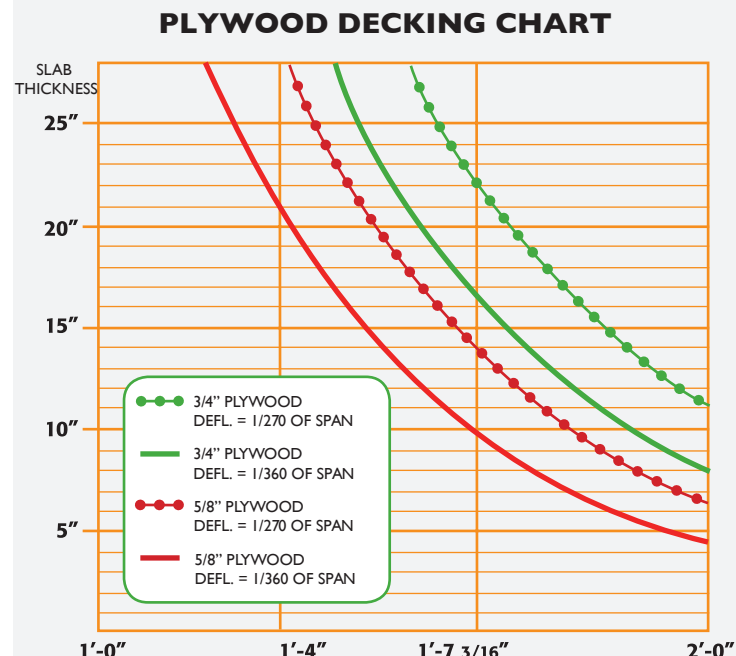


Chart is based on requirements for continuous spans over 3 or more supports. Grain of face plies parallel to span. Slab 150#/cu. ft. D.L. + 30#/sq. ft. L.L.



How to increase profits on concrete forming: adopt Ellis Methods for all suspended reinforced concrete construction! Through the use of simple, low-cost, standardized wood and metal parts in a way that has been proved fast, safe and economical, you can slash your costs tremendously!

DETERMINE SPACING



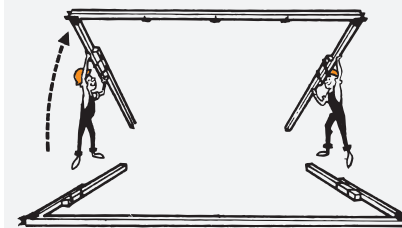
See catalog to get shore, purlin and joist spacing.

ATTACH METAL PARTS



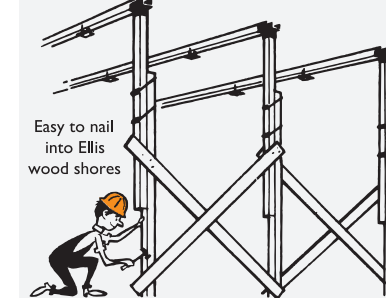
On ground, attach Ellis metal parts to lumber.

U-PURLIN ASSEMBLIES



Make series of U-purlin assemblies on ground, each consisting of 2 Ellis shores and one purlin, then raise.

CROSS BRACE



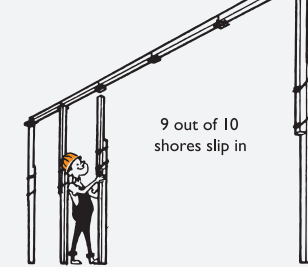
Easy to nail into Ellis wood shores. Cross brace these inverted U's so they are free standing.

JACK - LEVEL



Level whole system of purlins and end shores by story pole or string method, using Ellis Jack.

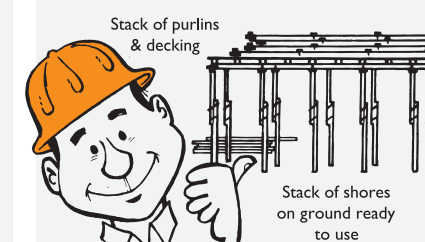
"SLIP IN"



In-between shores just "slip in." (1 row pictured - actually many.)

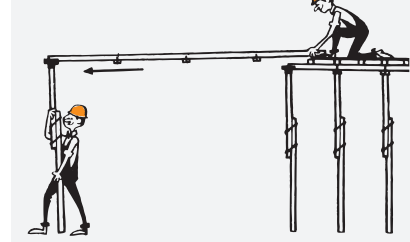
Extend shored area by 1 of 2 methods

COMPLETE A SECTION



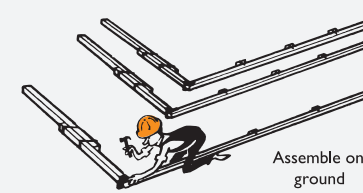
METHOD A. Complete a section with joists and decking. Stack purlins on top, shores below.

"WALK IT OUT"



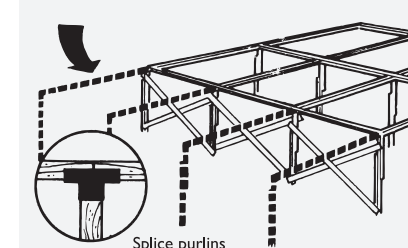
Man above pushes purlin end out, man below slips shore into purlin splicer, walk it out. Top man seats and nails it.

OR- EXTEND WITH "L" ASSEMBLIES



METHOD B. To shore entire area before decking, make series of L's with 1 shore to 1 purlin.

ADD "L" ASSEMBLIES



Erect L's, seating free end of each in purlin splicer left open, nail, cross brace as before.

COMPLETE & DECK



Then level, add slip-in shores, joists and decking to complete. Either method does a great job!

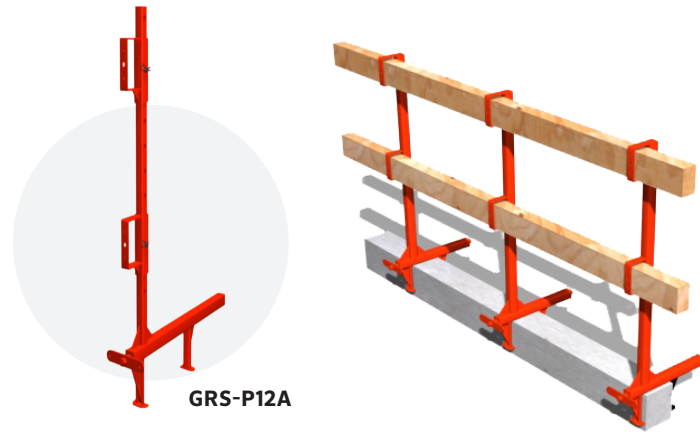


On every job site safety comes first. That's why Ellis has a line of guardrail products to fit every need. Whether the job is concrete framing, rooftop repair, or retaining wall protection Ellis has you covered. All of the guardrail products are designed and tested to far exceed OSHA requirements and are built with reinforced high carbon steel to last.

PARAPET GUARDRAIL

The Ellis non-penetrating temporary Parapet Wall Guardrail System is affordable, fast, safe, and strong. Also known as Wall Grabbers™ they quickly adjust to fit parapet walls up to 12" (GRS-P12) or up to 24" (GRS-P24). Use 2x4's, 2x6's or cable for rails. 8 FT MAXIMUM SPACING.

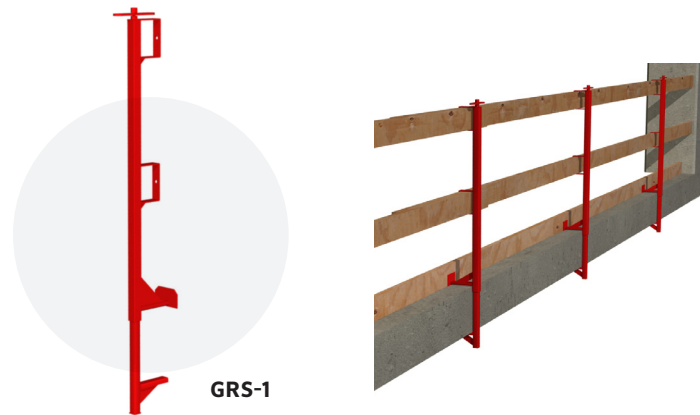
Item #	Adj. Range	Finish	Weight
GRS-P12A	4-12"	Powder Coated	23 lb
GRS-P24A	4-24"	Powder Coated	30 lb



GUARDRAIL STANCHION

The Ellis designed and OSHA compliant GRS-1 Guardrail Stanchions are built to last. Quickly adjust with top mounted handle to grab slabs up to 36" thick. 6 FT MAXIMUM SPACING.

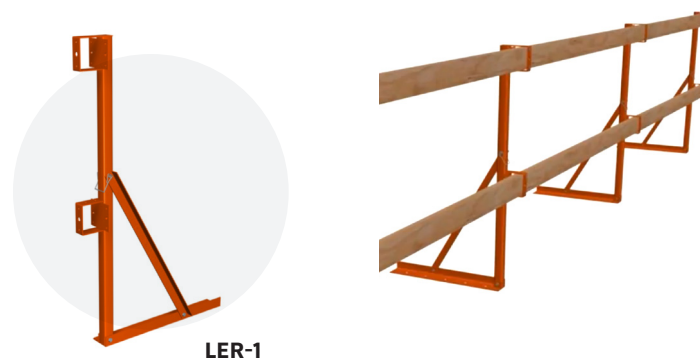
Item #	Slab Size	Finish	Weight
GRS-1	2"-36"	Powder Coated	25 lb



LEADING EDGE GUARDRAIL

Secure the leading edge of your deck surface with the Newell Leading Edge Protection Rail. The Ellis LER-1 is designed to speed up the setup and tear-down process by enabling the ability to group sections of rail together as one. Simply fold the rails down and stack them for transport to the next job.

Item #	Type	Weight
LER-1	Folding	18 lb
LER-1F	Fixed	15 lb

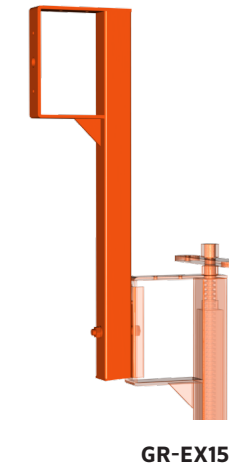


Ellis designed and OSHA compliant fall protection

GUARDRAIL STANCHION EXTENSIONS

The Ellis GR-EX15 Guardrail Extension adds an additional 15 inches of rail height and an extra pocket for railing. Bolt them on to the GRS-1, GRS-P12, or GRS-P24 with the hardware included for additional railing height.

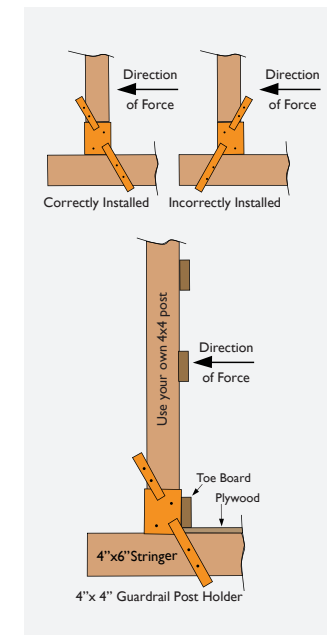
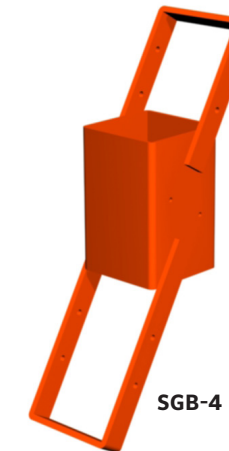
Item #	Size	Finish	Weight
GR-EX15	15"	Powder Coated	6 lb



SLIP-ON GUARDRAIL BRACKET

The Ellis Slip-On Guardrail Bracket is the most cost efficient way to add fall protection to 4x6 stringers or 4x4 joists. Slip the bracket on to existing stringer and fasten into place with nails add railing.

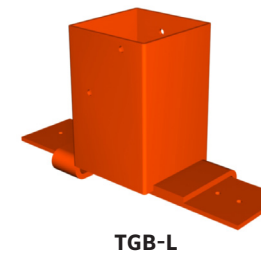
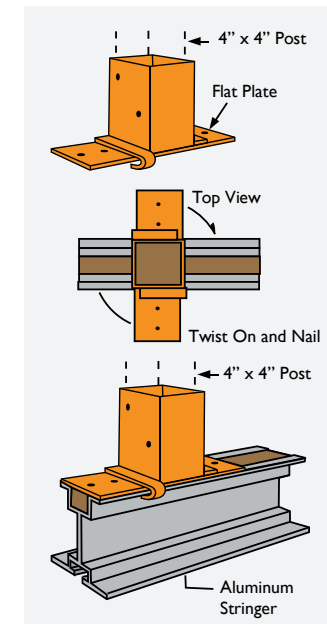
Item #	Weight
SGB-4	6 lb



TWIST-LOCK GUARDRAIL BRACKET

The Ellis Twist-Lock Guardrail Brackets make adding fall protection to aluminum stringers easy. Compatible with aluminum stringers or joists which measure 3.25 inches across the top flange. Place TGB on top of aluminum stringer, twist and nail in place. Slip wood (TGB-L) or metal (TGB-M) post into pocket and attach railing.

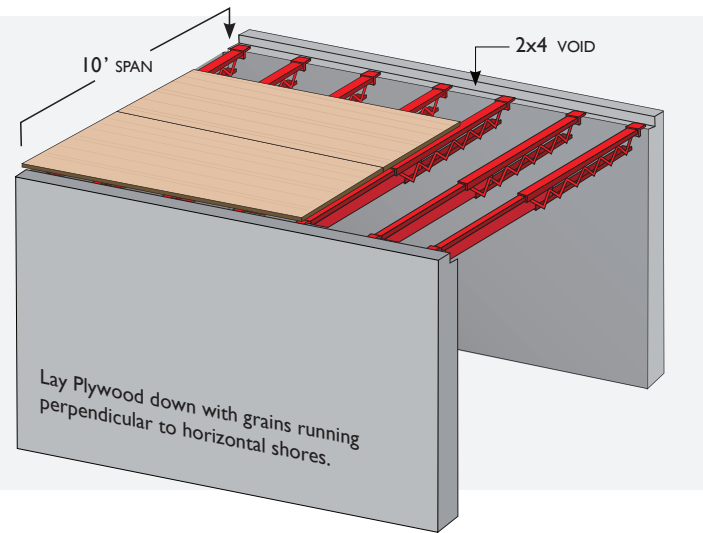
Item #	Size	Weight
TGB-M	Metal Post	6 lb
TGB-L	Lumber Post	6 lb



All Ellis guardrail products are designed and tested to meet OSHA requirements. Support loads of 200 lbs applied to top rail.

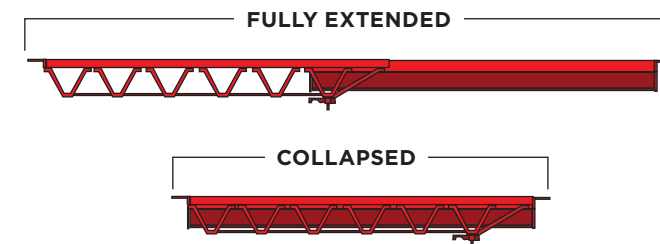
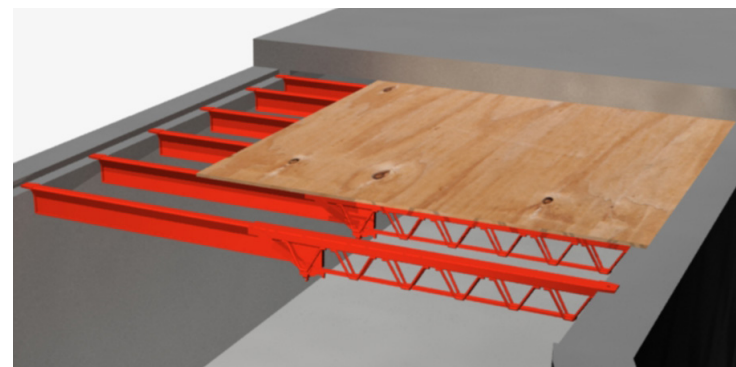


Horizontal Shores allow form builders to set up and tear down quickly by reducing the total number of shores needed to support formwork. Ellis Horizontal Shores also span openings traditionally occupied by vertical style shores. This creates ample room for people and equipment to move freely. Quickly open and close wedge lock with strike of a hammer. Horizontal Shores work great for shoring form work, pouring concrete decks, bridges, and box culverts. They can be used for shoring situations with or without Ellis Shores.



HORIZONTAL SHORE

Horizontal Shore quickly adjusts from 3'-7" to 6' (HS-46), 6' to 10' (HS-610), 8' to 13' (HS-813), 9' to 15' (HS-915) to support formwork for concrete decks, bridges, box culverts and heavy loads, but light enough for easy handling.



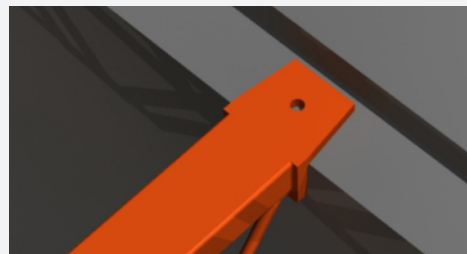
Item #	Size	Weight
HS-46	4'-6'	45 lbs
HS-610	6'-10'	64 lbs
HS-813	8'-13'	90 lbs
HS-915	9'-15'	137 lbs



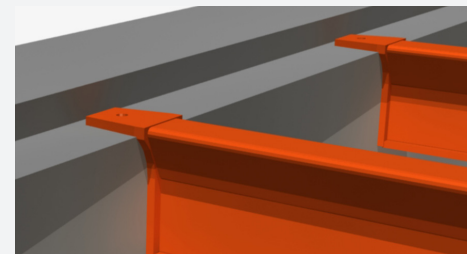
For correct spacing of horizontal shores, please call 800.654.8311 and request a horizontal spacing chart.



1 Easily lock and unlock all Horizontal Shores with the strike of a hammer.



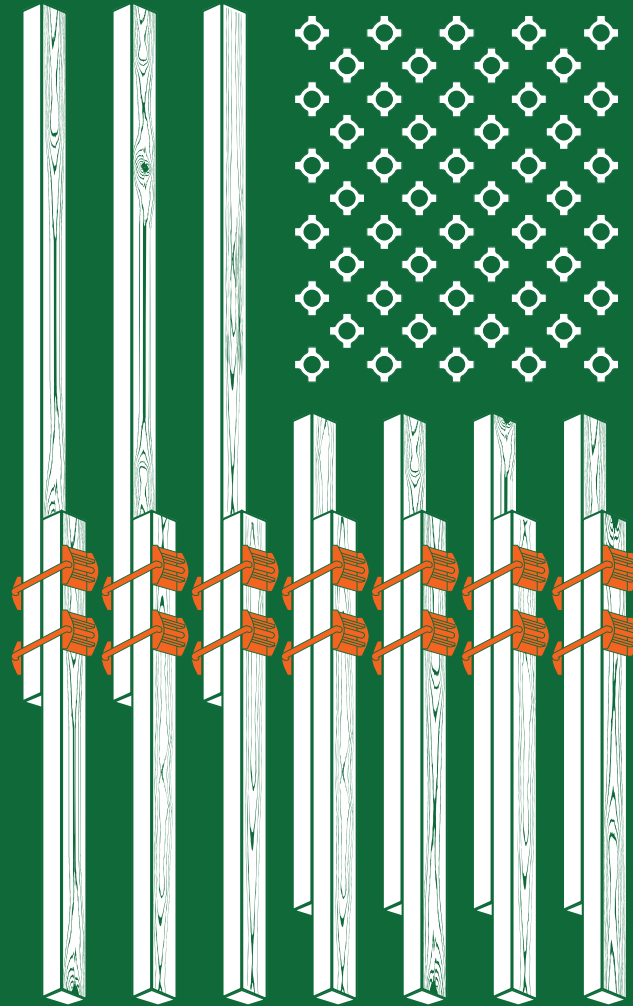
2 Tapered ears slide out of concrete encasement.



3 Horizontal Shores are collapsible below advertised range for removal.



Need expert support for Ellis products? Our knowledgeable support team is ready to assist you every step of the way. Whether you have questions, need troubleshooting help, or want guidance on optimizing your equipment, we've got you covered. Call us at 1.800.654.8311.



Ellis
MANUFACTURING COMPANY
OKLAHOMA CITY, OK

70
YEARS
1951 - 2021

PHONE: 800.654.8311 • 4803 N. Cooper Ave • Oklahoma City, OK 73118

Follow us: [@ellismfgco](#) or follow the links on [Ellismfg.com](#)

