

# Prestige



Commercial  
Carpet Tile

## QUANTIFY



00210 MUTUAL



00210 MUTUAL



00310 COLLECTIVE



00410 CORRELATIVE



00510 CORRESPOND



00720 SUPPLEMENTAL



00730 COMPLEMENTARY



Style:	7F0P7 Quantify
Construction:	Multi-Level Pattern Loop
Fiber:	100% Pivotal™ PET
Dye Method:	Solution Dyed
Tufted Weight:	15 oz/yd <sup>2</sup>
Gauge:	1/10
Stitches per Inch:	8
Finished Pile Thickness:	0.11"
Total Thickness:	0.253"
Average Density:	4909 oz/yd <sup>3</sup>
Product Size:	24" x 24"
Primary Backing:	Synthetic
Secondary Backing:	Stratworx
Protective Treatments:	Inherent Stain Resistance

## TESTING

Radiant Panel:	Class I (ASTM E-648)
Smoke Density:	<450 (ASTM E-662)
Static Control:	<3.5 kv (AATCC-134)
Antimicrobial:	Passes (AATCC-174)* *when using 5036S adhesive

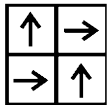
## ADA Compliant:

This product meets the guidelines as set forth in the Americans with Disabilities Act for minimum static coefficient of friction of 0.6 for accessible routes.

## PACKAGING

Tiles per Carton:	20 pcs
Yards per Carton:	8.88 sq yd

## INSTALLATION METHODS



**1/4 Turn**

## RECOMMENDED ADHESIVES

S5000	5036S Antimicrobial (AATCC-174)
5100S	S5001 [1 gal pail]

## WARRANTIES

10 Year Commercial Limited Warranty with Stain & Color for Strataworx®

## ENVIRONMENTAL CERTIFICATION

Green Label Plus Certification Number GLP8233

Specifications are subject to nominal manufacturing variance.

Material supply and/or manufacturing processes may necessitate changes without notice.