

Prestige



Commercial
Carpet Tile

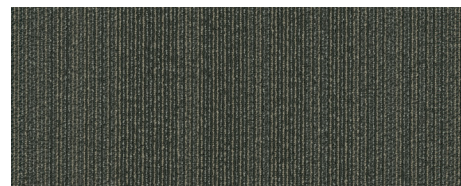
ALGORITHM



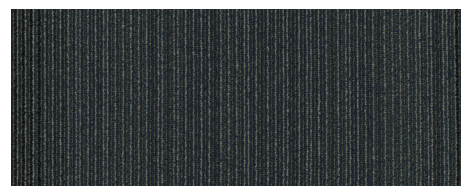
00520 MATHEMATICS



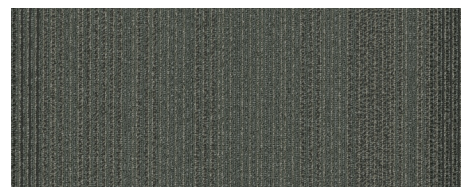
00210 REPETITION



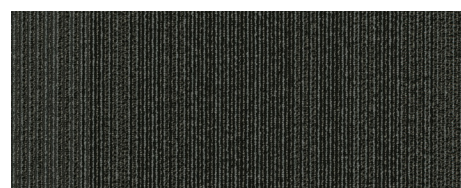
00310 STEP-BY-STEP



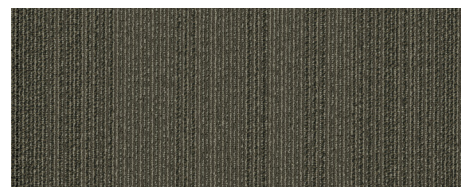
00410 PROCEDURE



00530 COMPUTE



00540 INFORMATION



00720 DATA



Style:	7F0P3 Algorithm
Construction:	Multi-Level Pattern Loop
Fiber:	100% Solution Q® Nylon
Dye Method:	Solution Dyed
Tufted Weight:	14 oz.
Gauge:	1/10
Stitches per Inch:	9.5
Finished Pile Thickness:	0.083"
Total Thickness:	0.224"
Average Density:	6072
Product Size:	24" x 24"
Primary Backing:	Synthetic
Secondary Backing:	strataworx™ tile
Protective Treatments:	SSP® Shaw Soil Protection

TESTING

Radiant Panel:	Class I (ASTM E-648)
Smoke Density:	<450 (ASTM E-662)
Static Control:	<3.5 kv (AATCC-134)
Antimicrobial:	Passes (AATCC-174)*

*when using 5036S adhesive

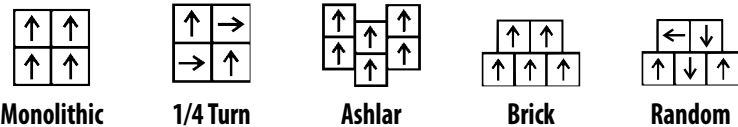
ADA Compliant:

This product meets the guidelines as set forth in the Americans with Disabilities Act for minimum static coefficient of friction of 0.6 for accessible routes.

PACKAGING

Tiles per Carton:	20 pcs
Yards per Carton:	8.88 sq yd

INSTALLATION METHODS



Monolithic

1/4 Turn

Ashlar

Brick

Random

RECOMMENDED ADHESIVES

S5000	5036S Antimicrobial (AATCC-174)
S100S	S5001 [1 gal pail]

WARRANTIES

10 Year Commercial Limited Warranty with Stain & Color for Strataworx®

ENVIRONMENTAL CERTIFICATION

Green Label Plus Certification Number GLP2671

Specifications are subject to nominal manufacturing variance.

Material supply and/or manufacturing processes may necessitate changes without notice.