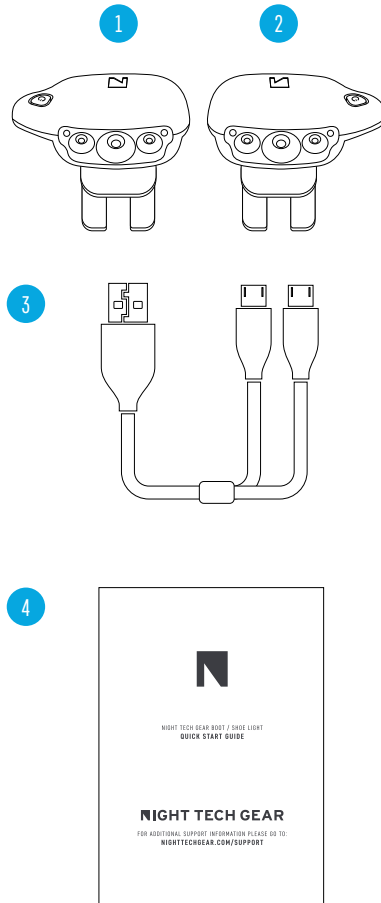




NIGHT TECH GEAR BOOT / SHOE LIGHT QUICK START GUIDE

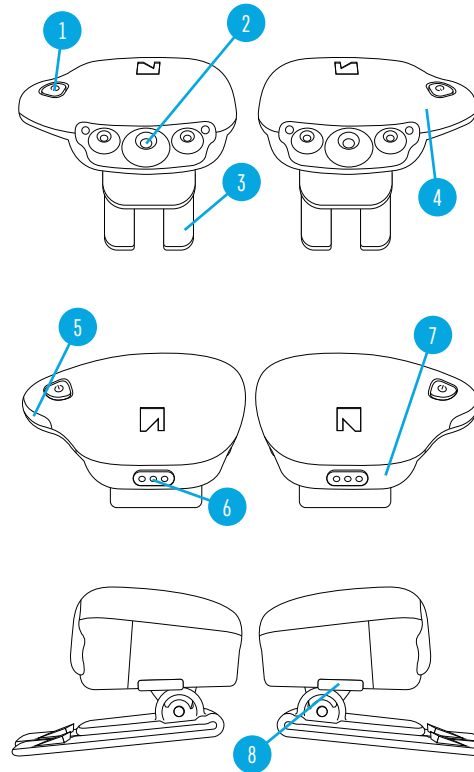
PACKAGE CONTENTS

1. Right boot / shoe light
2. Left boot / shoe light
3. USB charging cable
4. User manual / Quick Start Guide



PRODUCT DIAGRAM

1. Power Button / Intensity Settings
2. LED Lights
3. Adjustable Shoe Lace Clip
4. Weatherproof Case
5. Side / Rear Lights
6. Easy Grip Plate
7. Li-Ion Battery Base
8. USB Port / Charging Cover



INSTRUCTIONS

INSTALLATION

With the shoes/boots on or off, attach the units while laces are untied and slightly loose. Light units should be positioned to have the wing tips face the outside of each foot (toward the ankles) with the lights pointing forward.

The prongs of the clip will straddle the tongue holder if footwear has one. The shoelace clip pivots up and down to accommodate different foot sizes and shoe/boot models. Pivot the clips to position the light units so that they project light parallel to the ground (similar to car headlights). The clip is a rigid adjustment so hold the clip firmly in one hand and the light unit in the other to "click" into place for up / down adjustments.

Attach the units high on the laces for shoes and mid-level for boots by sliding the clip over and under the laces to grip them. The longer bottom prongs should be completely under the laces and the upper "tongue" should be completely on top. Tie laces tightly to secure units.

OPERATION

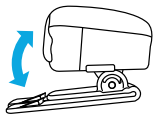
Do not look directly into the lights! Use power button to turn on the units. The first click is STANDARD setting (lowest), the second click is HIGH and the third is BURST (highest). The fourth click is FLASHING mode and the fifth click is OFF. The back lights make you visible from the back and sides. They are also a battery life indicator and will start to flash when the remaining battery power is below 30 minutes.

BATTERY / CHARGING

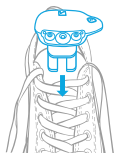
When the side wing light begins to flash that is an indication that the lights need to be charged. The light units come with a USB charging cord with "y" split micro-USB connections to charge both units at once. Carefully open each of the charging port covers and attach the Micro USB "Y" charging cord. Plug the cable into a USB charger. Charging will take several hours. The red light indicates that the unit is charging. When the red light turns off, the unit is fully charged.

First time use: Lights come with a partial charge. It is recommended that they be fully charged before the first use.

INSTALLION (ILLUSTRATED)



- 1 Pivot clip as needed.



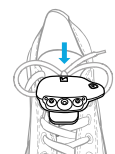
- 2 Place high on laces but below the cuff.



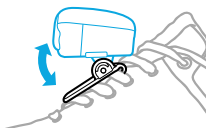
- 3 Bottom prongs go completely under laces.



- 4 Top tongue goes completely on top of laces.

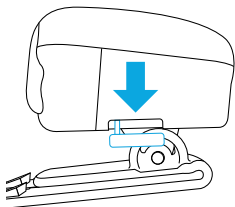


- 5 Push securely down through laces. Then Snug and tie laces behind unit.

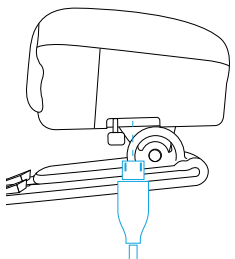


- 6 Light units should be parallel to the ground.

CHARGING (ILLUSTRATED)



- 1 Open USB charging cover.



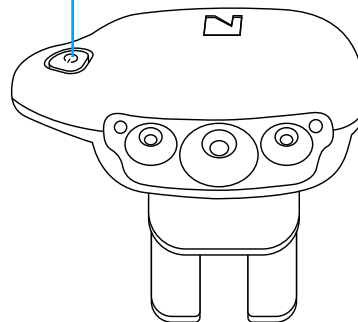
- 2 Plug in micro-USB charging cord to units.



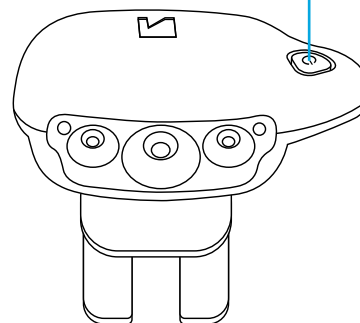
- 3 Plug in USB to power source
(Both units can be charged at once.)

OPERATION (ILLUSTRATED)

Power button / Intensity Settings



Power button / Intensity Settings



LIGHTING
PERFORMANCE



CLICK 1	Standard	200 lumens	45m	10+ hours
CLICK 2	High	300 lumens	75m	4 hours
CLICK 3	Burst	400 lumens	90m	2 hours
CLICK 4	Flashing	200 lumens	45m	12+ hours
CLICK 5	Off			

NIGHT TECH GEAR

FOR ADDITIONAL SUPPORT INFORMATION PLEASE GO TO:
NIGHTTECHGEAR.COM/SUPPORT