

HD-T910/912 eTap Integration Kit

Installation Instructions

TRP Cycling Components
688 W. Amidan Dr. 4X-1
Ogden, UT 84404
Toll Free: 1-877-807-4162
Direct: 1-650-965-4442
Email: info@trpcycling.com
Web: www.trpcycling.com

SAFETY WARNINGS & INFORMATION

WARNING - Disc brakes offer a significant increase in performance over traditional cable actuated systems. Follow the break-in recommendations listed in this manual, allow yourself time to learn and become accustomed to the braking characteristics.

WARNING - Disc brakes, calipers, and rotors get VERY HOT during regular use. DO NOT touch or attempt to service the rotor or caliper until you've allowed for sufficient cooling to occur.

WARNING - Leaking oil indicates a potential BRAKE FAILURE. If you're system is leaking oil stop immediately and determine the nature of the problem. DO NOT continue to ride a leaking system.

WARNING - If your bike is involved in a fall or crash, fully check the brake function including: the lever, caliper and rotor are securely attached to the bike, pads are correctly installed and functioning, the cable, (if applicable) is operating smoothly and the lever feels firm when applying the brake. Always have a qualified mechanic check the brakes if you have any doubts.

WARNING - Pad thickness must be at least 0.8mm of pad material. Confirm this before each ride. Keep pads clean and free of oil or hydraulic fluid. If pads become contaminated, discard and replace.

WARNING - TRP/Tektro braking systems are designed for use on a single rider bicycle. Use of these system on any other vehicle or apparatus will void the warranty, possibly causing you great personal harm or injury.

CAUTION - Read this manual completely before attempting to install or work on your TRP/Tektro brakes. If you are unfamiliar with any element of assembly or maintenance of TRP/Tektro braking systems please consult a qualified mechanic for assistance.

CAUTION - Only use TRP/TEKTRO branded replacement mineral oil when servicing the brakes. Other disc brake fluids, ESPECIALLY DOT based oils, will harm the system and compromise braking performance.

CAUTION - Cleanliness is a very important part of any maintenance of a TRP/Tektro brake system. If the pads or rotor become contaminated with oil, or if the system becomes contaminated with impurities, braking performance will be greatly impaired.

CAUTION - As with any oil, precautions in handling and clean up of any spills should be handled according to accepted best practices as governed by your state or country. Our Mineral oil is non-toxic, but clean up any spills promptly and completely. If Mineral Oil gets in your eyes IMMEDIATELY FLUSH WITH WATER for several minutes and go to the hospital. If Mineral oil gets on your skin RINSE IMMEDIATELY with soap and water. Do not inhale Mineral Oil, it is harmful. If inhaled move to a well ventilated environment and proceed to the hospital for appropriate care. If you ingest Mineral oil it may cause vomiting and/or diarrhea.

REQUIRED TOOLS

- T10 Torx Wrench
- Phillips Head Screwdriver
- eTap Integration Kit for HD-T910/912
- SRAM eTap Blip

POST MOUNT ADAPTERS

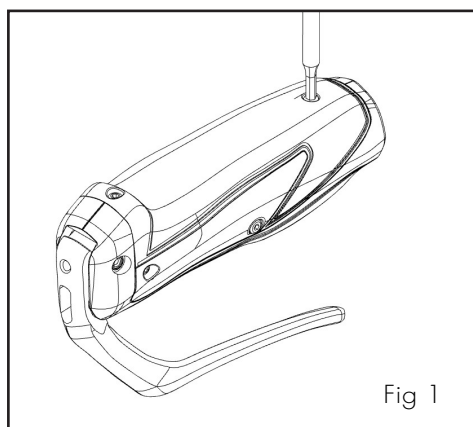


Fig 1

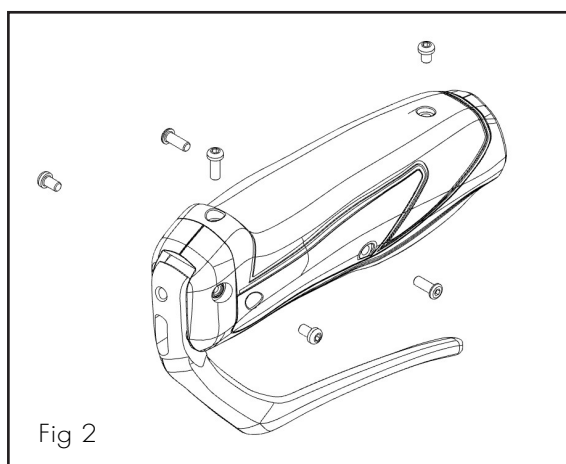
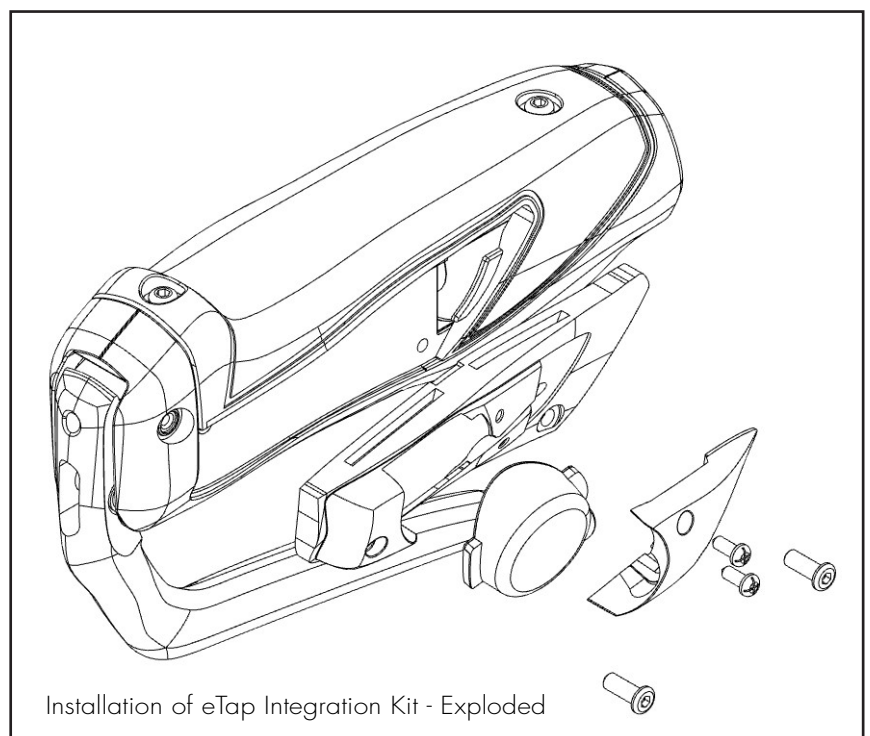


Fig 2

PREPARING THE BRAKE LEVER

Remove the six T10 Torx fasteners from the cover of the HD-T910/912 brake lever. FIG 1 (Note the position of each fastener as they are location specific.) FIG 2 Remove the cover pieces from the brake lever body by pinching the back end and lifting up. Remove the inboard piece of the cover. FIG 3



Installation of eTap Integration Kit - Exploded

INSTALLING THE eTap INTEGRATION KIT

Route the eTap cable of the Blip through the hole in the base plate following the brake hose. Install the base plate of the eTap Integration Kit onto the brake lever body. FIG 4 Reinstall the cover pieces of the brake lever body. Install the six T10 Torx fasteners in the correct location. Install the Blip onto the base plate of the eTap Integration Kit. Install the cover plate over the tab and wire of the Blip using the two M2.3 X 6 fasteners and a Phillips head screwdriver. FIG 5

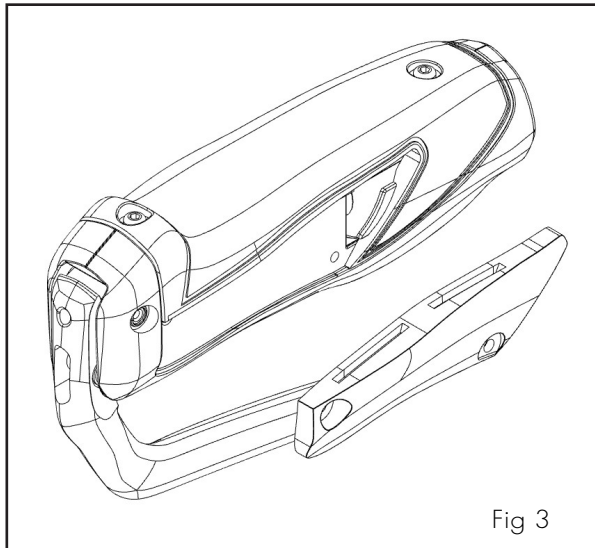


Fig 3

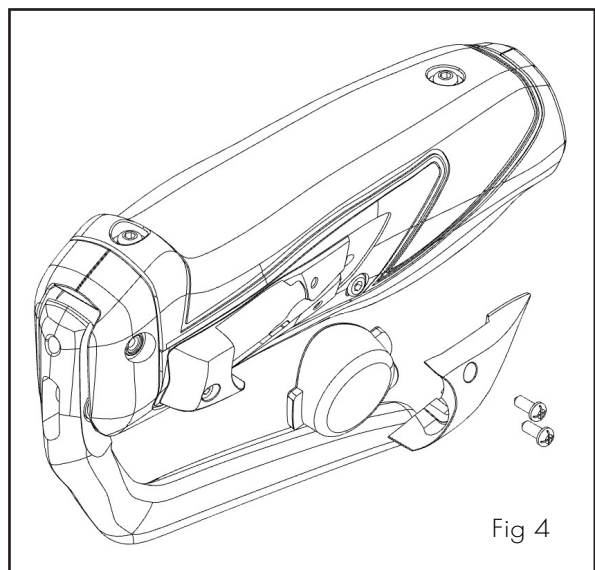


Fig 4

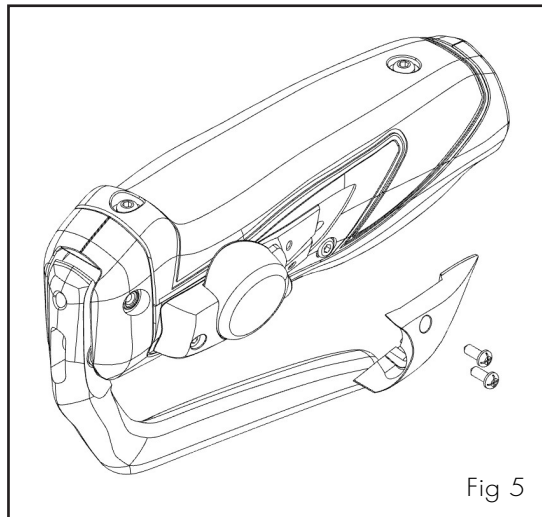
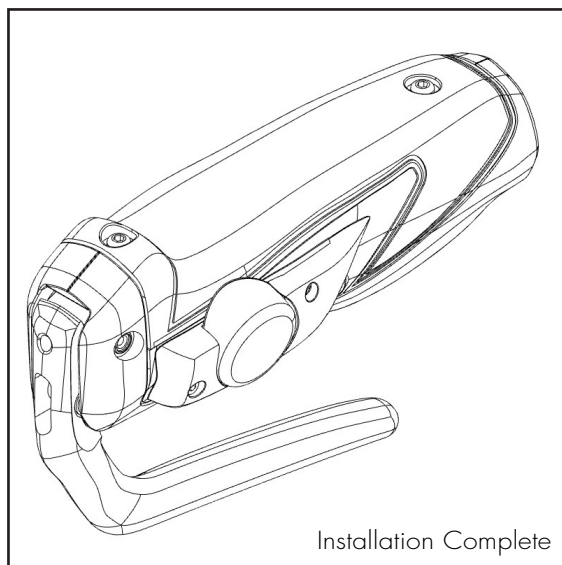


Fig 5



Installation Complete

GENERAL MAINTENANCE

PAD REPLACEMENT

Pads should be replaced if they become contaminated or have less than 2.5mm thickness. (Pad friction material & metal backing plate). (Fig 8)

BEFORE RIDING

Check the pads for wear or contamination.
Check the hose for cracking, wear or deformation. Replace if necessary.
Check that the brake system is operating correctly.

AFTER RIDING

Remove any mud or contamination from the rotor slot on the caliper.
Clean the caliper body with a cloth.

AT REGULAR INTERVALS

Check the oil level in the reservoir.
Lubricate the brake lever pivot with grease.
Check to make sure that all the bolts are tightened to the correct torque specifications.

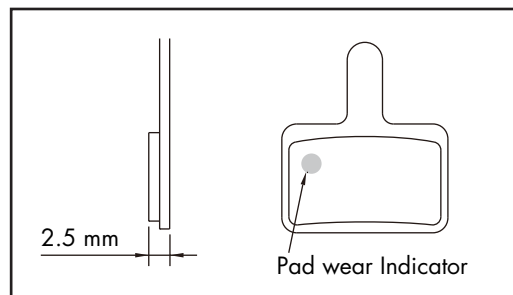


Fig 8