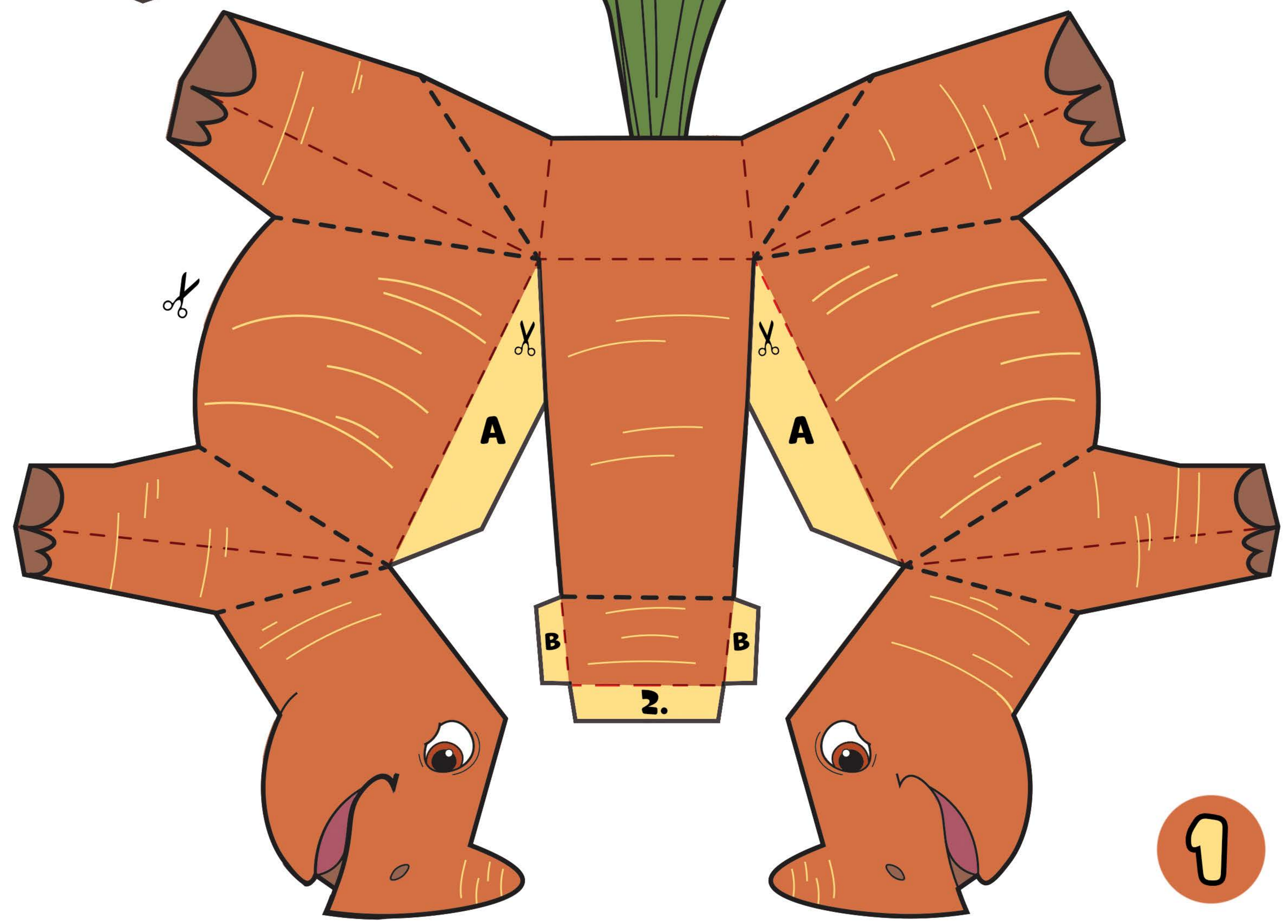
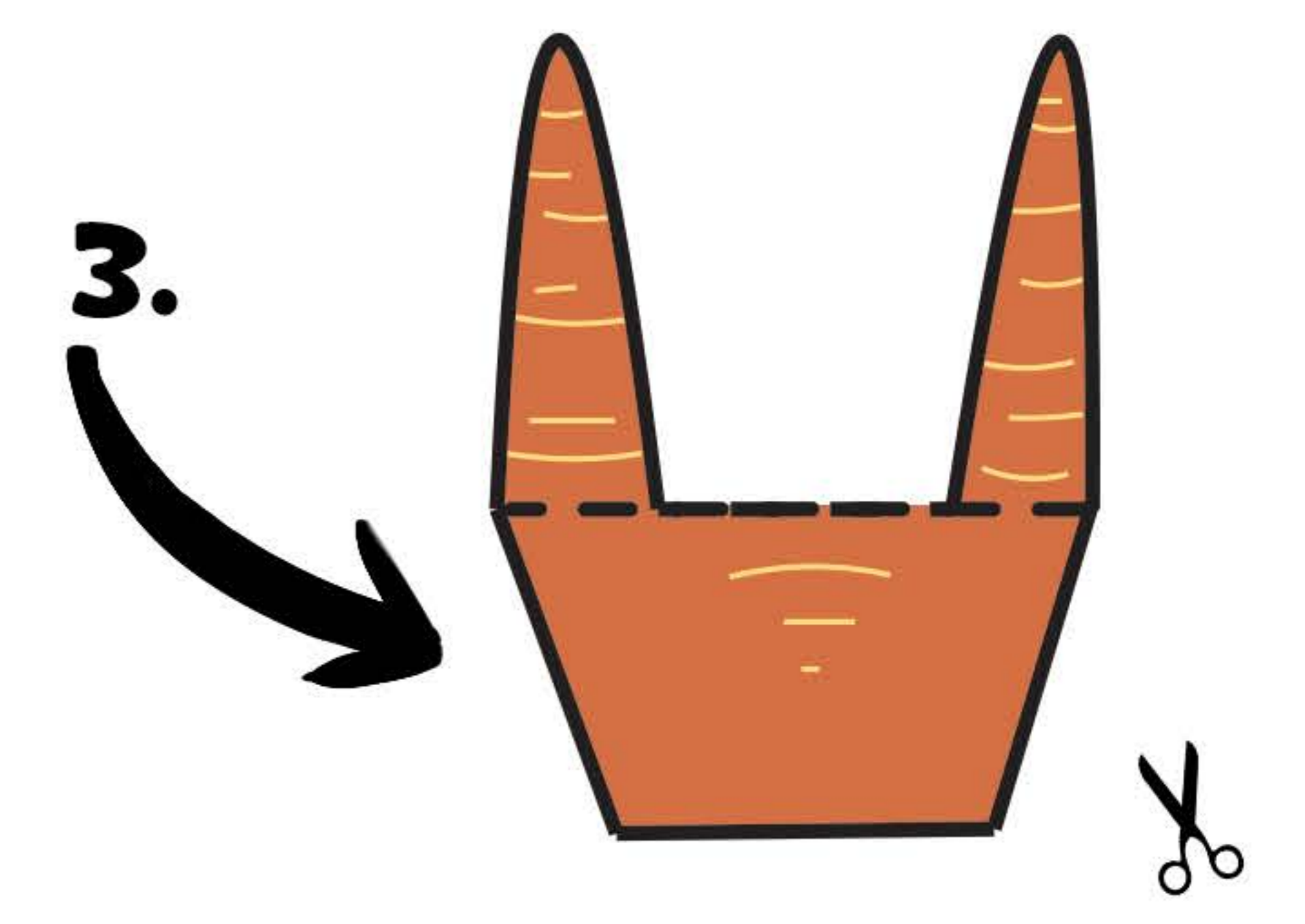
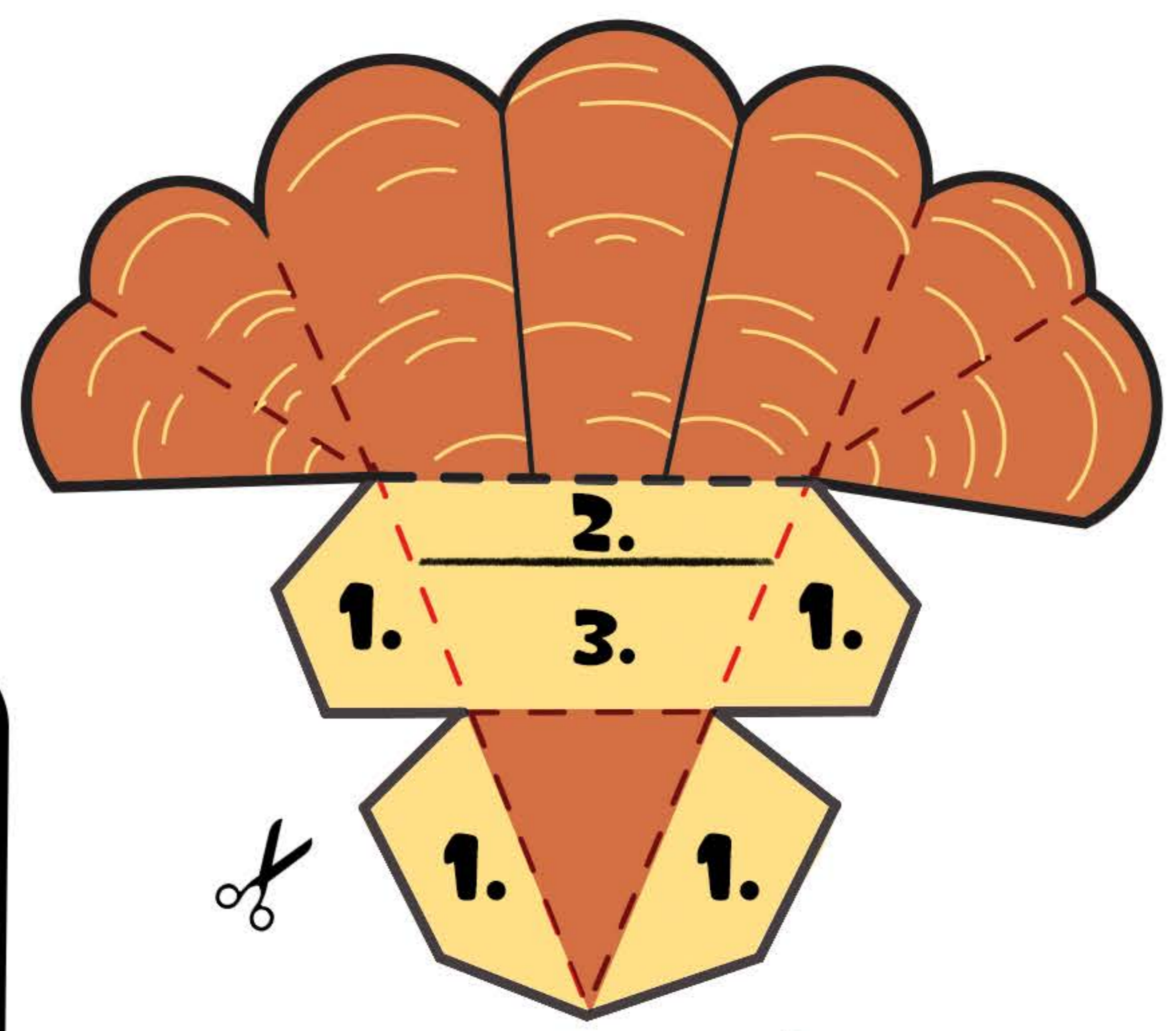


GINGER PAPER DOLL!

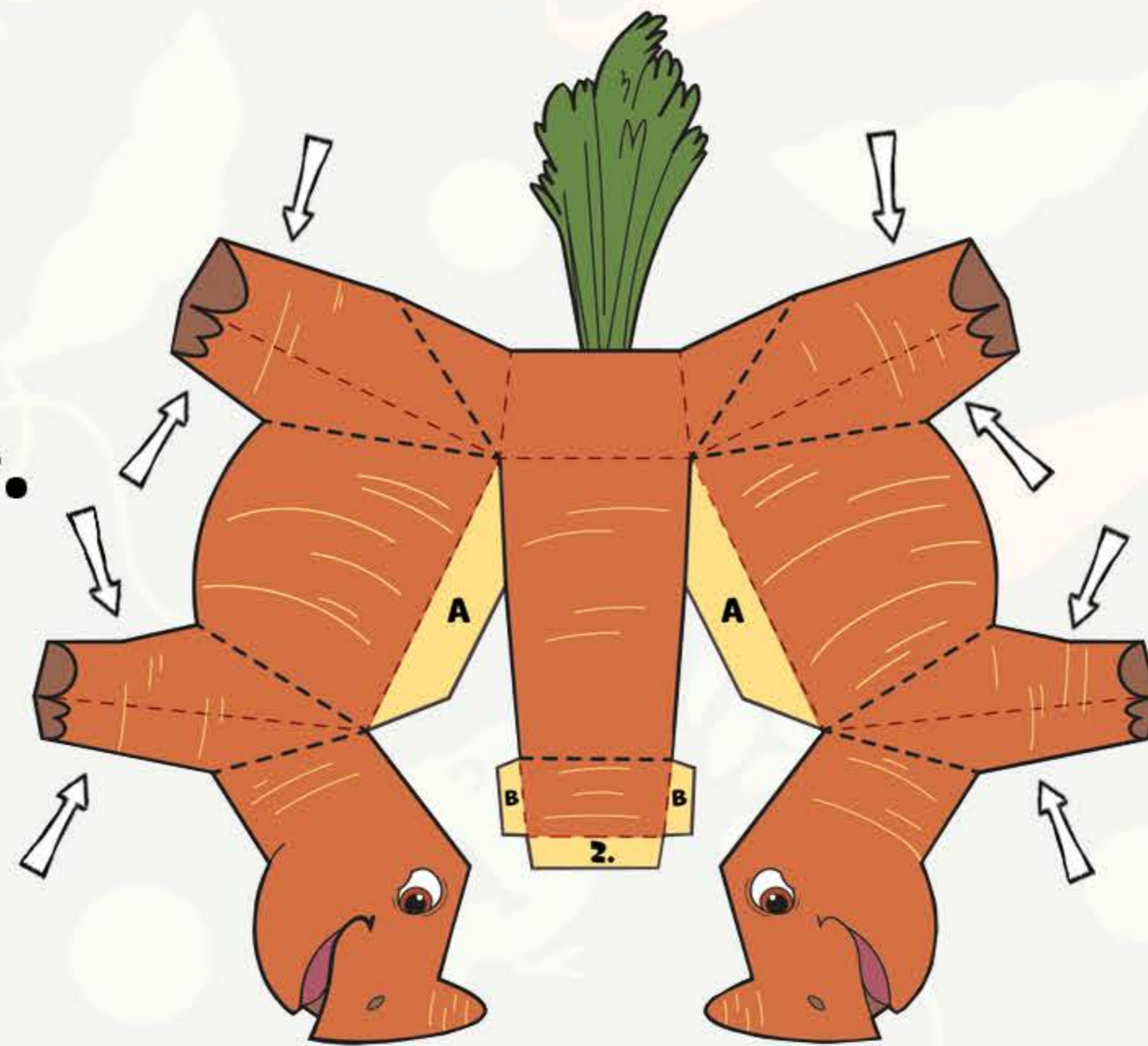
- Print out this sheet of paper
- Cut out Ginger and use the instructions on the second page to build her!



LET'S BUILD GINGER!

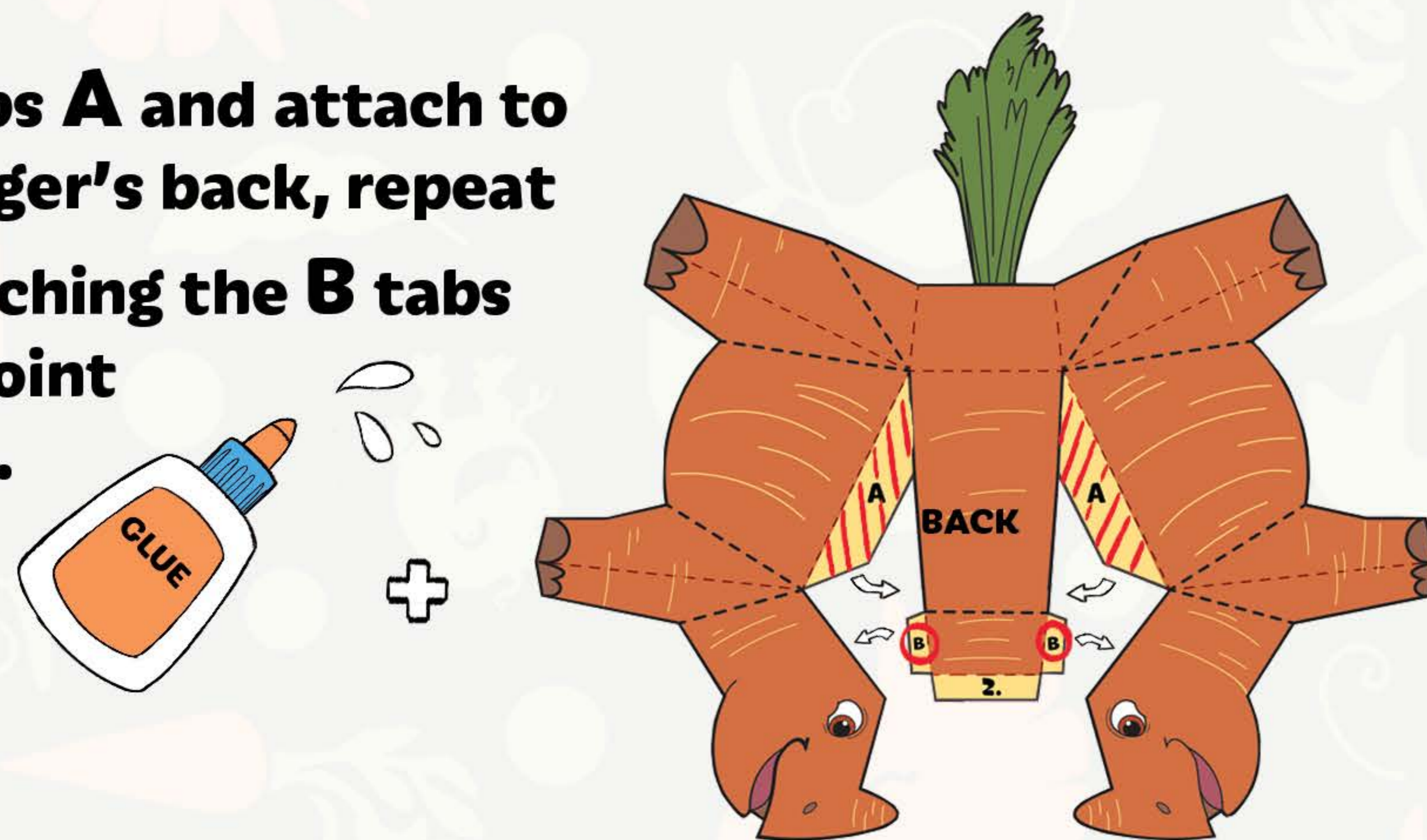
STEP 1.

Carefully fold along all the dotted lines of the pieces.



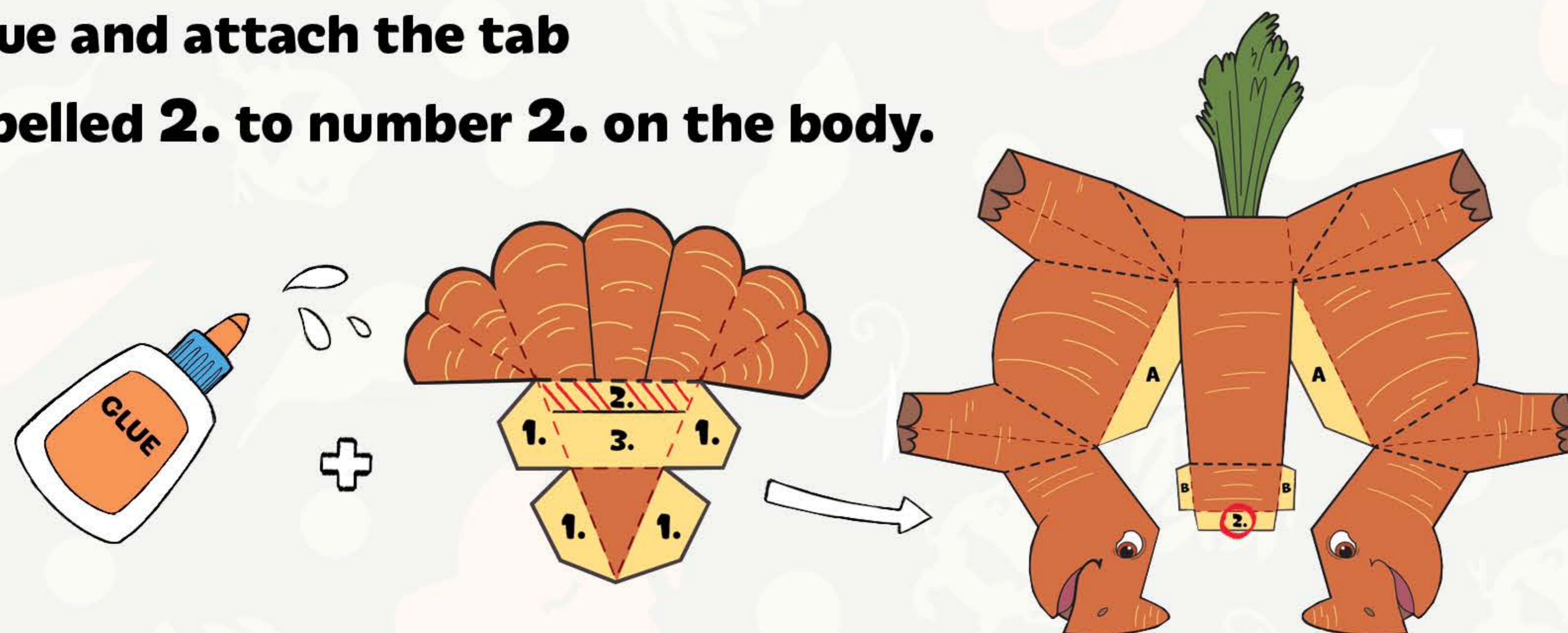
STEP 2.

Apply glue to tabs **A** and attach to underside of Ginger's back, repeat this step by attaching the **B** tabs to the halfway point on Ginger's neck.



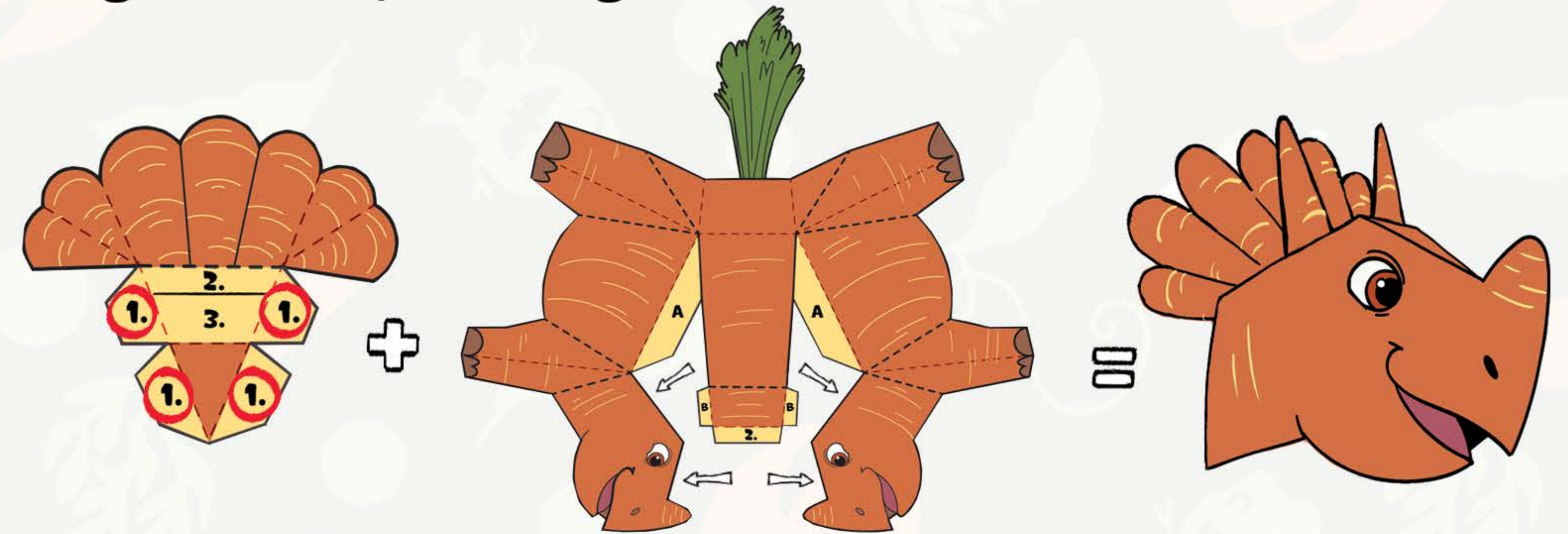
STEP 3.

Glue and attach the tab labelled **2.** to number **2.** on the body.



STEP 4.

Attach tabs labelled **1.** to the inside of Ginger's head, creating her 3D face



STEP 5.

Put glue on the inside of Ginger's nose horn and pinch the two pieces together to seal her head completely!



STEP 6.

Glue Ginger's horns numbered **3.** to the tab on her head marked **3.** to complete her face!

