

# INSTALLATION INSTRUCTIONS

CP030200142&CP030200339

[ Subaru Forester 2013-2018 ]

**Thank you for purchasing our products! Please contact us for any issues!**

## Parts List:

4 pcs Self Tapping screws

4 pcs Stainless Steel Screws

## Tools Needed:

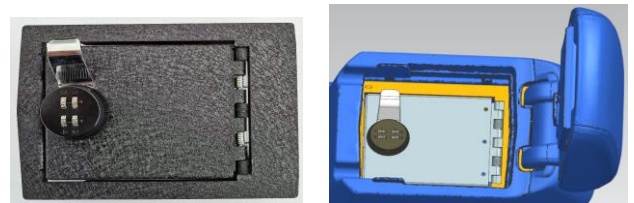
Screwdriver

Punching Cone

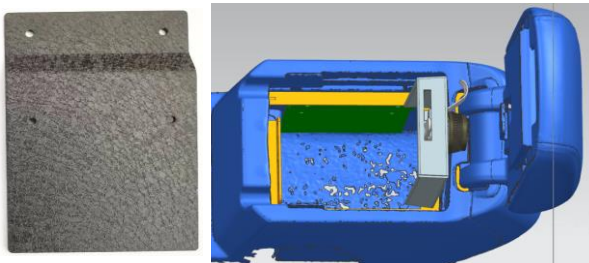
**STEP 1** Empty the armrest box of any content.



**STEP 2** Position the **Top Panel** into the armrest box.



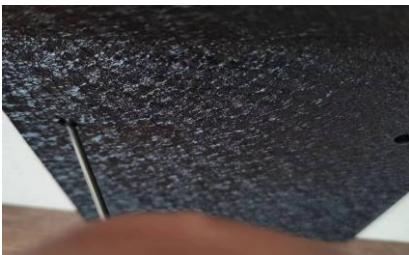
**STEP 3** Open the **Lid** and put the **Side Panels** under the top panel



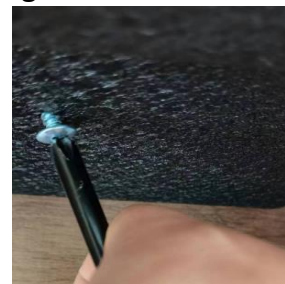
**STEP 4** Use the **Screwdriver** tighten the four **Stainless Steel Screws**.



**STEP 5** Use the **punching cone** to poke four **holes** the inner wall of the armrest box through the reserved holes.



**STEPS 6** Use the **Screwdriver** to tighten the two or four **Self Tapping Srews**



**STEP 7** Enjoy your purchase! Contact us for any issue.

**If you have any questions, welcome to contact us by our email!**

**We will contact you within 24hours.**

**Thank you very much!**