

# INSTALLATION INSTRUCTIONS

CP030200141

[ Benz GLC 2016-2022 ]

**Thank you for purchasing our products! Please contact us for any issues!**

## Parts List:

4 pcs Self Tapping screws  
4 pcs Hexagon Flange Nut

## Tools Needed:

Screwdriver  
Punching Cone  
Wrench

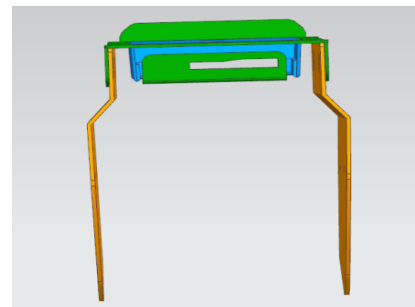
**STEP 1** Empty the armrest box of any content.



**STEP 2** Position the **Top Panel** into the armrest box.



**STEP 3** Open the **Lid** and put the **Side Panels** under the top panel. Pay attention, the **side panels** are different.



**STEP 4** Use the **Wrench** tighten the **Hexagon flange nuts**



**STEPS 5** Use the **punching cone** to **poke four holes** the inner wall of the armrest box through the **reserved holes**. Use the **Screwdriver** to tighten the **Self Tapping Screws**



**STEP 6** Enjoy your purchase! Contact us for any issues.

**If you have any questions, welcome to contact us by our email!**

**We will contact you within 24 hours.**

**Thank you very much!**