

Installation Instructions

CP030200488

[Fits: Lincoln Navigator 2018-2023]

Thank you for your purchase! Please contact us for any issues!

Hardware List:

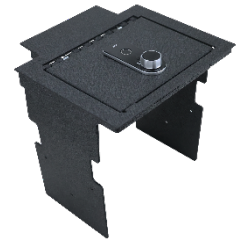
4 x Self-Tapping Screws

4 x Nuts

Tools Needed:

Phillips Screwdriver

Punching Cone



Note 1 When you receive this product, we recommend you that you should check the hardware before installation.

Note 2 The fingerprint code should be set with the **DOOR OPEN** to test the lock effectively without locking yourself out.

Safe installation:

STEP 1 Empty the armrest box including the factory mat at the bottom.

STEP 2 Place the top panel of the safe into the armrest box. Open the lid and try to place the panel on the top of the armrest box.

STEP 3 Put the brackets into the armrest box through the safe door. Note there are two studs on both sides of the top panel. Confirm the reserved holes of the brackets are attached to the studs of the panel.

STEP 4 Hand Nuts on the studs of the panel, then use an Open-end wrench to tighten the nuts. Do not overtighten the nuts, overtightening will damage the studs.

STEP 5 Use the punching cone to poke small holes in the wall of the armrest box through the reserved holes of the brackets.

STEP 6 Use the Screwdriver to screw the Self-tapping Screws through the reserved holes of the brackets into the armrest box. Also do not overtighten the screws.

STEP 7 Enjoy your purchase. Any issues please contact us.