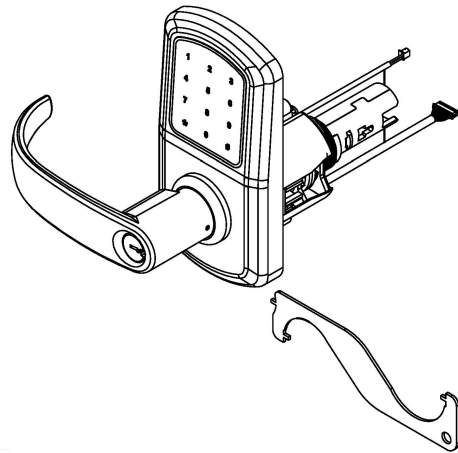
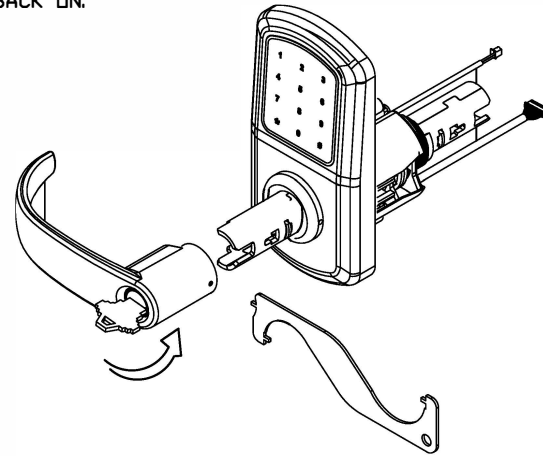


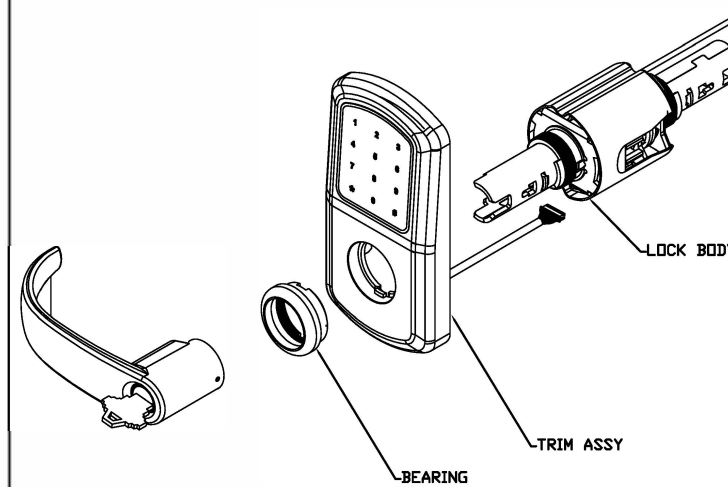
STEP 1
 CHANGING HANDING ON THE e-Elite CYLINDRICAL LOCK. LEFT HAND (LH) SHOWN, WILL CHANGE TO RIGHT HAND (RH)



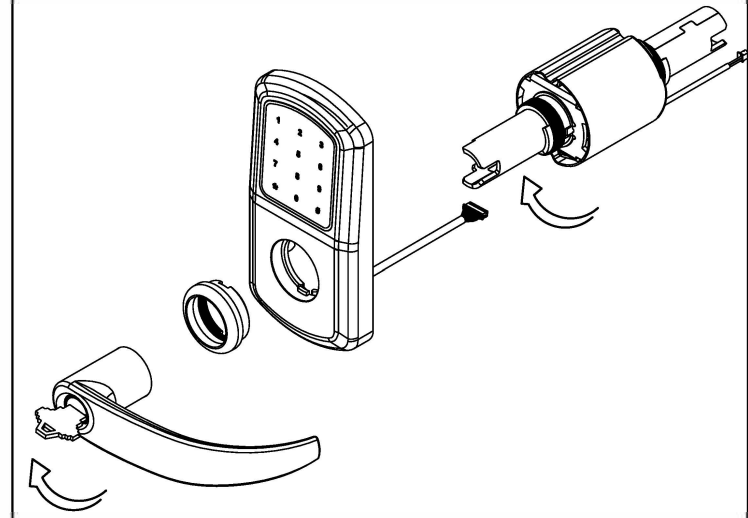
STEP 2
 REMOVING OUTER LEVER: ENSURE UNIT IS LOCKED, ROTATE KEY APPROXIMATELY 70°, INSERT TOOL INTO LEVER CATCH HOLE & PUSH BACK LEVER CATCH, REMOVE LEVER. FOLLOW THE SAME STEPS IN REVERSE ORDER TO PUT THE LEVER BACK ON.



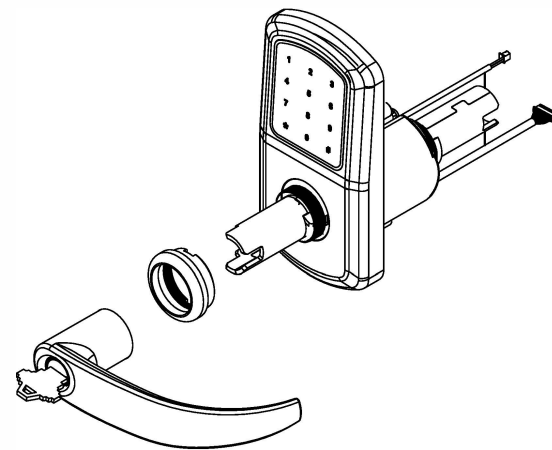
STEP 3
 UNSCREW THE BEARING AND PULL OUT THE LOCK BODY.



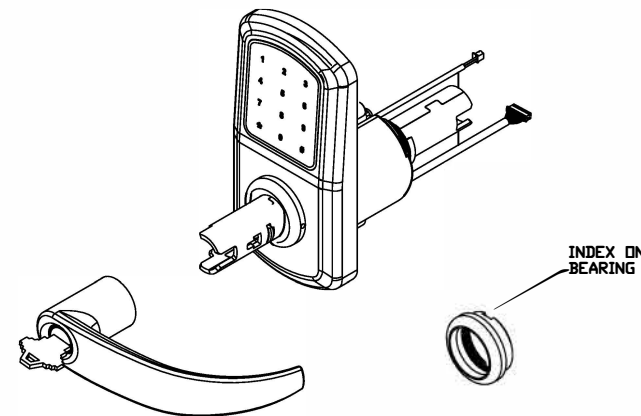
STEP 4
 ROTATE THE LEVER AND THE LOCK BODY 180°.



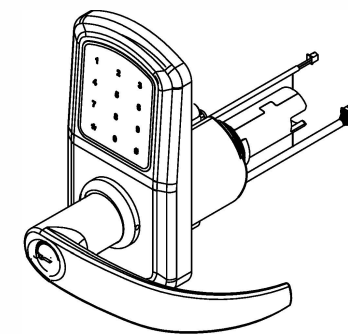
STEP 5
 INSTALL THE LOCK BODY.



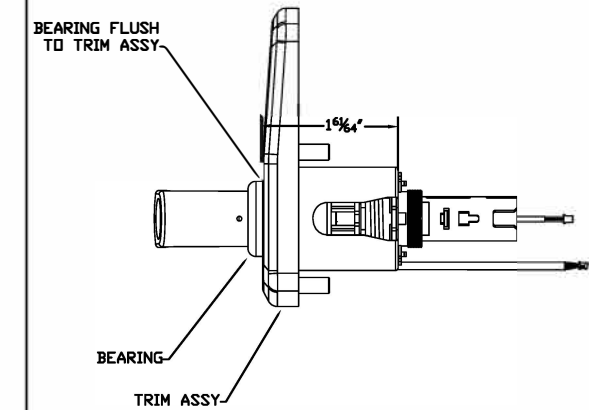
STEP 6
 SCREW ON THE BEARING- SCREW ON UNTIL THE BEARING STOPS AND UNSCREW BEARING 1 FULL TURN. THEN ROTATE UNTIL THE TRIM ASSY 'CLICKS' INTO THE BEARING INDEX.



STEP 7
 INSTALL OUTSIDE LEVER (SEE STEP 2).



BEARING TO BE FLUSH TO TRIM ASSY WHEN INSTALLING. DIMENSION NOTED < 1 5/16" IS FOR REFERENCE ON A 1 3/4" THICK DOOR.



SCAN CODE TO VIEW YouTube VIDEO ON CHANGING THE HANDING ON THE e-Elite

<https://youtu.be/i0CjvIFLkn8>



<p>TownSteel</p> <p>17901 RAILROAD STREET CITY OF INDUSTRY, CA 91748</p>	<p>DRAFT UNLESS OTHERWISE SPECIFIED: 1° MAX</p>	<p>B</p> <p>TOLERANCES UNLESS OTHERWISE SPECIFIED: X.X (METRIC) = ±0.4 X.XX (METRIC) = ±0.15 FRACTIONS = ±.8 ANGLES = ±1/2° ∅ .12 MACHINED SURFACES 125/</p>	MATERIAL: NOTED
	<p>DRAWN BY: SC</p>		HEAT TREAT:
	<p>DATE: 3/7/23</p>		FINISH:
<p>THIRD ANGLE</p>			TITLE: e-Elite CHANGING HANDING
			PART#: e-Elite SERIES

THIS DRAWING AND THE INFORMATION CONTAINED THEREON OR DERIVED THEREFROM ARE THE CONFIDENTIAL PROPERTY OF TOWNSTEEL, INC. IT IS NOT TO BE REPRODUCED, OR DISCLOSED TO OTHERS, AND MAY BE USED ONLY FOR THE PURPOSE OF ENABLING THE PARTY TO WHOM IT HAS BEEN LOANED TO QUOTE ON OR FILL AN ORDER FOR TOWNSTEEL, INC., OR AS MAY BE OTHERWISE AUTHORIZED BY TOWNSTEEL, INC. IN WRITING.