



Innovators by design | Since 1770
A BIANCHI 1770 GROUP COMPANY

994 LASER

Quick-Start Guide

CONTENTS

Machine set-up & password entry

Jaw calibration

Cut by code & decode

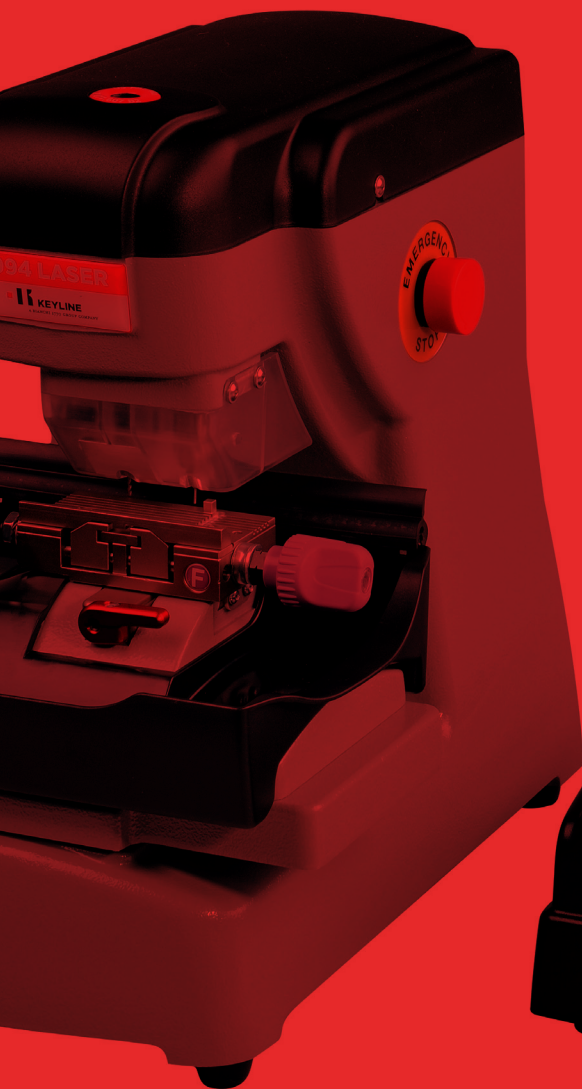
How to replace the cutter
& change the tracer

Short form instructions

Replacements parts list

IMPORTANT

Please read the following instructions carefully as improper use can damage the machine and may void the warranty



1. INITIAL SETUP

Cable Connection and Powering Machine

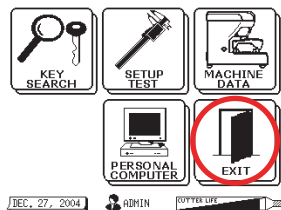
Mobile users: you must use a pure sine wave inverter with 1100 watts (or greater) to power the machine or machine motor will not work properly. Do not install jaw until instructed on page 2 of this guide.

1. Attach the 9-pin connector cable to the **LOWER** port on the back of the console **AND** to the back of the machine. **SECURE WITH ATTACHED SCREWS!**
2. Attach power cord to back of machine and plug into a properly grounded outlet.
3. Make sure the **ON/OFF** switch above the power cord is to the **ON** position.
4. Rotate the Emergency Stop button towards the back of the machine until it releases outward.
5. The machine will now begin to start-up. This process takes a few seconds. Proceed with Password Entry.

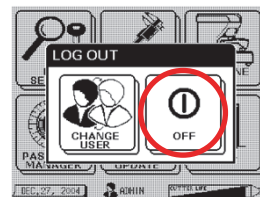
Powering Machine OFF

1. Select **BACK TO MAIN MENU** from any screen

2. Select: **EXIT**



3. Select: **OFF**



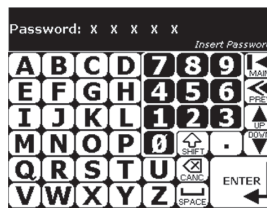
4. Screen will display **NOW YOU CAN TURN OFF THE MACHINE.**
5. Press the Emergency Stop Button to turn **OFF** the machine.

2 . PASSWORD ENTRY

Touch Screen: For best results use a non- metallic stylus such as a plastic tip end of a pen, tip of brush handle, etc.

1. Type in Master Password: 1-2-3-4-5-6

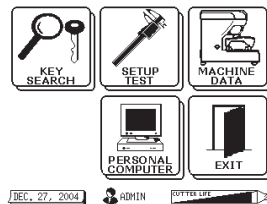
Press: **ENTER**



2. Press: **YES***



3. Your Laser 994 is now ready for use



*If **YES** is selected the following should occur:

- The default password should be changed by the assigned Administrator for continued security of the Machine. If the password is not changed, anyone can access the secured screens using the default password.
- The new Master password should be documented and stored in a safe place in case the password is forgotten.
- The Master (Administrator) Password permits access to all screens.
- All other USER passwords will not have access to secure screens.
- At least one additional new password should be assigned for USERS other than the Administrator.
- To add additional USERS see page 36 in your machine manual.

IMPORTANT

COMPLETE JAW SETUP

Before using the machine to cut any keys, please SETU P ALL TH E JAW S using the template (silver template with the key ring on one end) found in the black accessory case. Follow the directions on page 4 of this guide.

This adjustment is necessary due to fluctuations and changes that have occurred during shipping.

Failure to follow this procedure correctly may cause damage to the tracer, cutter, and/or jaw and may result in voiding any warranty.

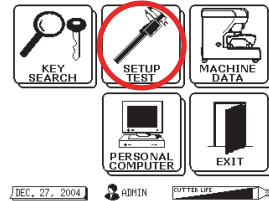
If you have any questions on these procedures, please contact Keyline USA Technical Support: Monday-Friday between 8am-5pm EST at: 1-800-891-2118

CUTTER LIFE & KEY MATERIAL

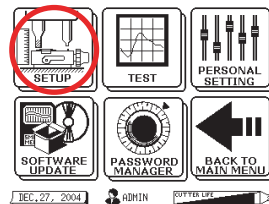
Cutting steel keys is not recommended with the 994. Cutter life will be drastically reduced and/or cutter damage may occur. In addition, the 994 cannot cut or decode any type of plastic key.

3. JAW SETUP PROCEDURE

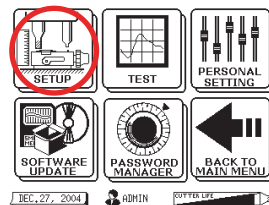
1. Select: **SETUP/TEST**



2. Select: **SETUP**



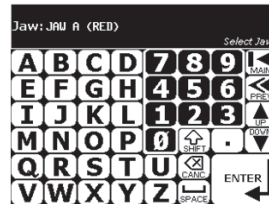
3. Select: **JAW SETUP**



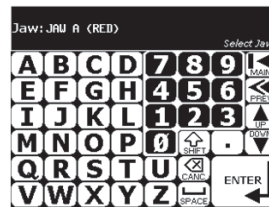
4. Select: **DESIRED JAW** (use DOWN arrow to select other jaws). Press: **ENTER**

Install Jaw to far left of carriage until it stops.
CLAMP TIGHT WITH RED JAW LEVER.

5. Insert the SILVER TEMPLATE (metal bar with key ring in accessory kit). Hold blank FLAT in jaw & press in and down while tightening. Press: **YES** to calibrate jaw



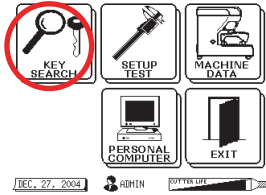
6. **SETUP OK** – Record Setup numbers then do a second **JAW SETUP** (starting from Step 1). Compare the Setup numbers to first set. If they are within +/- 2 of original numbers, Jaw Setup is complete. Remove silver template. Press: **OK** (If not, run third Jaw Setup and compare 2nd & 3rd setup numbers.)



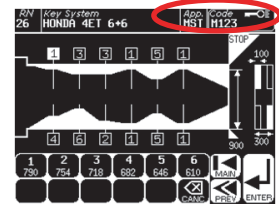
4. HOW TO CUT BY CODE

If Required, Enter Your Password

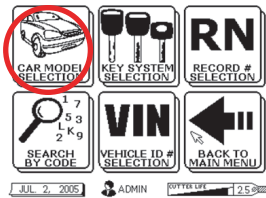
1. Select:
KEY SEARCH



5. Verify key code is correct.
Press: **ENTER**.



2. Select:
CAR MODEL SELECTION,
then enter the
MAKE, MODEL & YEAR when
prompted.
Press: **ENTER**.



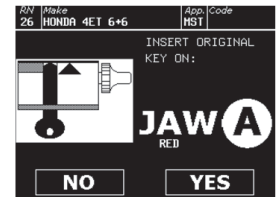
6. Key blank
reference screen.
Press: **ENTER**.

Note: If desired vehicle is not displayed in the Model selection, touch the down arrow to view additional vehicles with similar code series.

3. Select:
CUT BY CODE
when prompted



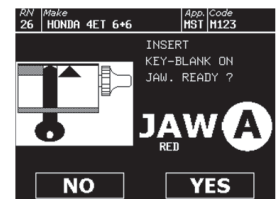
7. Follow screen prompts.
Insert correct Jaw and clamp tight.
Insert key blank
Press in and down on blank while clamping.
Press: **YES**.



4. Enter Desired
Key Code
Press: **ENTER**



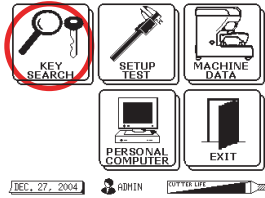
8. Follow on-
screen prompts
until cutting is
complete.



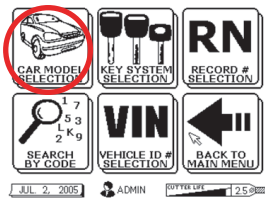
5. HOW TO CUT BY DECODE

Decode Metal Keys Only! Do Not Decode Plastic Keys!

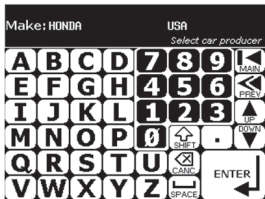
1. Select:
KEY SEARCH



2. Select:
CAR MODEL SELECTION,



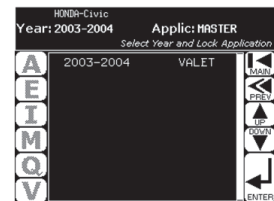
3. If desired Make is not displayed–
Touch: **DOWN ARROW** to view additional vehicles with similar codes.
Select:
DESIRED MAKE
Press: **ENTER**



4. If desired Model is not displayed–
Touch: **DOWN ARROW** to view additional vehicles with similar codes.
Select:
DESIRED MODEL
Press: **ENTER**



5. If desired Year is not displayed–
Touch: **DOWN ARROW** to view additional vehicles with similar codes.
Select:
DESIRED YEAR RANGE
Press: **ENTER**



6. Select:
CUT BY DECODE

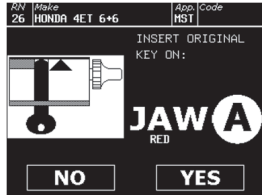


CONTINUE

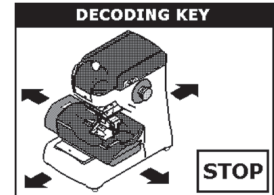


5. HOW TO CUT BY DECODE

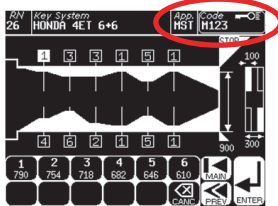
7. Insert Jaw and clamp tight. Insert **ORIGINAL** key blank- press down on blank while clamping jaw tight. Press: **YES**



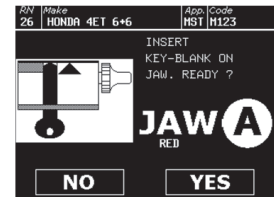
Decoding In Process



8. Verify Decoded Key. Make sure Key Code is displayed. Press: **ENTER**



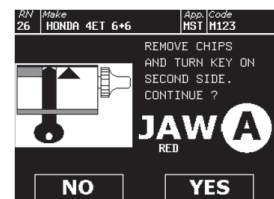
10. Remove **ORIGINAL** key. Insert new key blank- press down On blank while clamping jaw tight. Press: **YES**



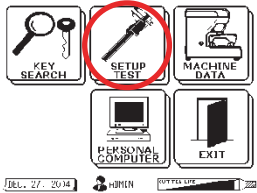
9. Key blank reference list is displayed. Press: **ENTER**

Make	Model/Chvs	Year	App. Code
HONDA		2009-2006	HST
Original	ILC35111-TSH	(M)G00	
	35113-S0-A01	(M)G00	
	35113-S9A-A01	(M)G00	
Barnes	C28722	(M)G00	
Iico	H00115	(M)G00	
Jet	HD110N-PHT	(M)G00	
Keyline	-	(M)G00	
Silca	H0N6615	(M)G00	
Staltec	632247	(M)G00	
Transponder: MEGAMOS Fixed Code (M)G00			

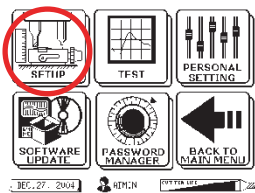
11. **BRUSH OFF ALL CHIPS** - Turn key over and press down on blank while clamping jaw tight. Press: **YES**



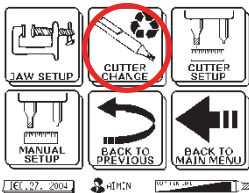
6. HOW TO TO REPLACE THE CUTTER



Select: **SETUP TEST**



Select: **SETUP**



Select: **CUTTER CHANGE**



1. Insert **RED** rod through hole in top of machine
2. Rotate rod until it drops into position
3. Press down to lock onto cutter
4. Rotate until arrow on **RED** rod points left (9 o'clock position)
5. Insert LONG T-wrench into black collar on left side of cutter guard
6. Loosen 3 turns. Leave wrench in place
7. Remove **RED** rod with cutter attached
8. **DO NOT INSTALL NEW CUTTER AT THIS TIME!!!**
9. Press: **CONTINUE**



DO NOT INSTALL CUTTER – Press CONTINUE



10. Insert new cutter on **RED** rod. Pressing in until it clicks
11. Insert **RED** rod with new cutter through hole in the top of the machine.
12. Rotate until cutter **RESTS LIGHTLY** on the **SILVER DOT** on the jaw
13. Tighten setscrew with the Long T-wrench
14. Remove T-wrench and **RED** rod. Press: **YES**

Reset Cutter Counter?

Press: YES (only if cutter is brand new)

7. HOW TO CHANGE THE TRACER

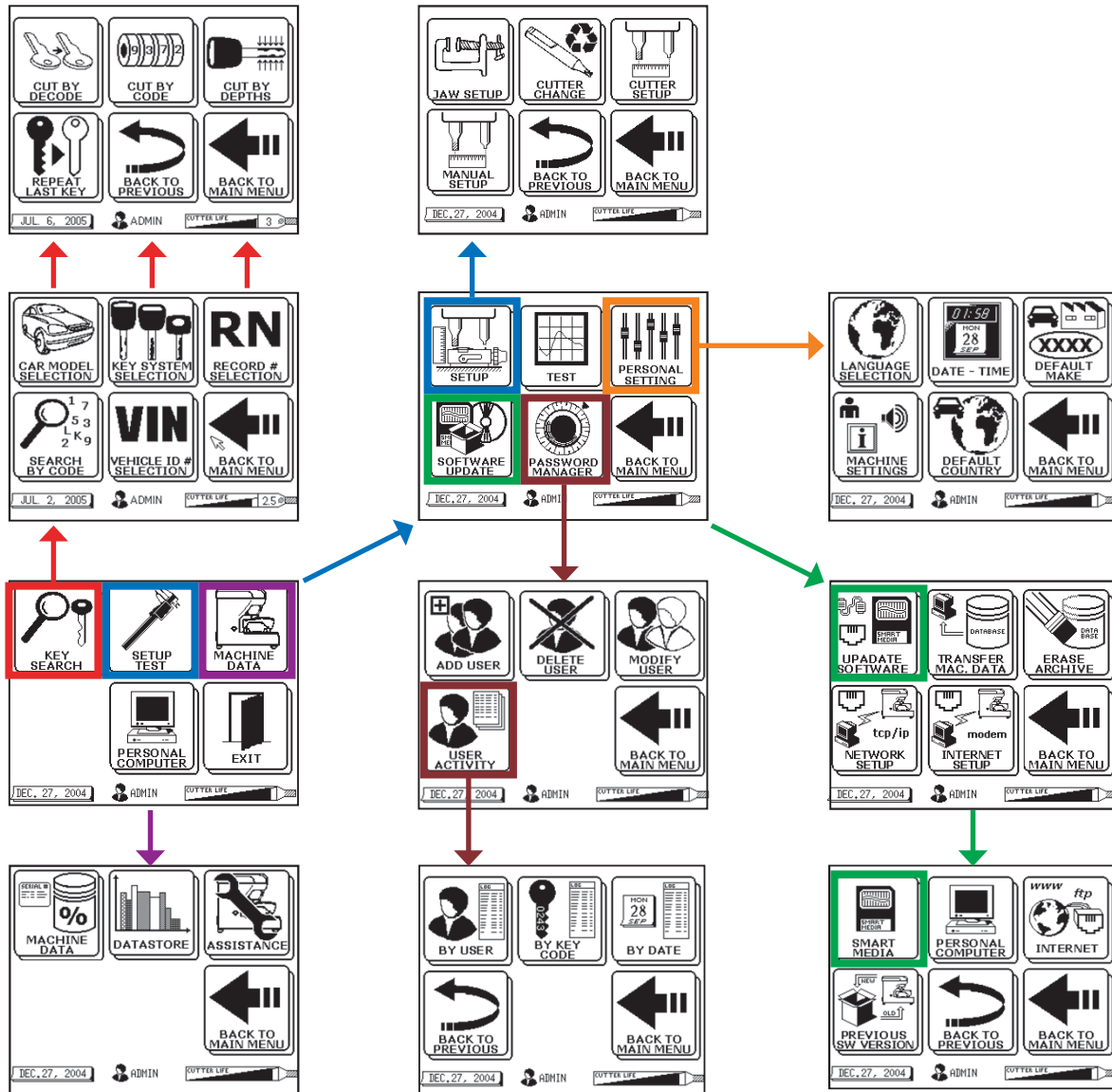
1

1. Use small 2.5mm T-wrench to loosen tracer setscrew.
2. Insert into hole in right side of shield.
3. Unscrew 1/2 turn.
4. Pull out tracer.
5. You may use pliers to remove tracer if it is bent or broken.

2

1. Install new tracer as far as it will go up - you cannot go too far.
2. Be sure flat side of tracer is to the right to allow the setscrew to seat properly .
3. Tighten setscrew. DO NOT OVER TIGHTEN!
4. SEE JAW SETUP INSTRUCTIONS ON PAGE 4.

SHORT FORM INSTRUCTIONS



For Technical Support call 1-800-891-2118

LASER 994 REPLACEMENT PARTS LIST

Description	Part Number
Universal 2.5mm cutter	B3320
Tracer – High Security	B3310
1.5mm cutter – Edge Cut	B3403
Tracer – Edge Cut	B3404
Magnetic Tip Stop – for use with F Jaw	B3405
Plunger Tool	B3315
Honda test blanks (5pk)	B3353
Cutter setup blanks (5pk)	B3319
Jaw calibration template	B3354
Red “A” Jaw	B3311
Gray “B” Jaw	B3312
Green “C” Jaw	B3313
Blue “D” Jaw	B3314
Fan Filter	B3326
Infiniti Adaptor	B3352
Lexus 80K Adaptor	B3379
Ducati/Aprilia/Guzzi Adaptor	AV08
3mm T-wrench (Long)	B3316
2.5mm T-wrench (Short)	B3317
Automatic Vacuum Attachment	B3318