



**SOLID**  
TO SUCCEED

# TELESCOPIC BOOM LIFT

## XGS125J1

### Standard configuration

- 3-entry platform with side revolving door
- 12V DC auxiliary power
- Cold start components
- Engine air pre-filter kit
- Engine condition monitoring and start protection device
- Four-wheel four-turn
- X-shaped swing axle
- Lowering and moving alarm
- Tilt alarm
- Emergency stop of platform and chassis
- Weight and amplitude limit detection
- Emergency power unit
- 4-wheel braking system
- Self-leveling platform
- Proportional joystick control
- Drive enable
- Lockable engine house
- 360° turntable rotation
- Full time positive traction drive
- Full speed traveling motor
- Telematics pre-interface
- Anti-extrusion protection device
- Hydraulic oil cooler
- Harsh environment kits
- Thumb rocker steering



Working height  
40.2 meters



Lift capacity  
300/460Kg



Diesel  
power



### Optional configuration

- Hydraulic generator
- Platform power supply
- Air pipe to platform
- Tool tray
- Working light assembly
- Fall arrest assembly
- Platform anti-squeeze auxiliary track
- Platform with half-height mesh panel

**XCMG FIRE-FIGHTING SAFETY EQUIPMENT CO.,LTD**

No.17 Zhujiang East Road, Hi-Tech Development Zone, Xuzhou, Jiangsu, China  
mewp@xcmg.com

# XGS125J1



**SOLID**  
TO SUCCEED

## Telescopic Boom Lift-Engine Powered

Item	Metric	Imperial
<b>Dimension</b>		
Overall dimension - stowed state	Length	14990mm
	Width	2400mm/4169mm
	Height	2810mm
Overall dimension - transportation	Length	11800mm
	Width	2300mm
	Height	2810mm
Platform dimension	Length	2400mm
	Width	900mm
	Height	1150mm
Wheelbase	4498/4210mm	14ft 9in/13ft 10in
Fly jib length (fully retracted/fully extended)	2440mm	8ft
Min. ground clearance	340mm	1ft 1in

### Performance

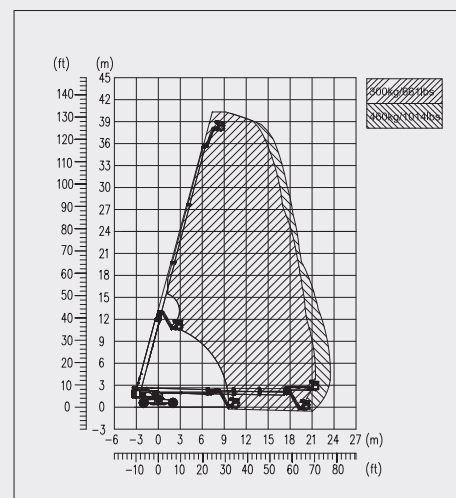
Max. working height	40.2m	131ft 10in
Max. platform height	38.2m	125ft 4in
Max. working range	23.5m	81ft 8in
Max. lift capacity	300kg (unlimited) 460kg(limited)	661 lbs(unlimited) 1014 lbs(limited)
Max. number of occupants	2/3	
Max. working slope	X-5°/ Y-5°	
Telescopic boom luffing range	-1.5°~ +75°	
Fly jib luffing range	-60°~ +70°	
Turntable rotation	360°	
Platform rotation	160°	
Total weight	20800 kg	45856 lbs
Driving speed (stowed)	5km/h	3.1mph
Driving speed (raised or extended)	0.5km/h	0.31mph
Min. turning radius-axle retracted (inside/outside)	16167mm/18401mm	53ft /60ft 4in
Min. turning radius-axle extended (inside/outside)	5398mm/8931mm	17ft 8in /29ft 4in
Turntable tailswing (axle retracted/axle extended)	2473/1538 mm	8ft 1in /5ft
Max. gradeability	40% (21°)	

### Power source

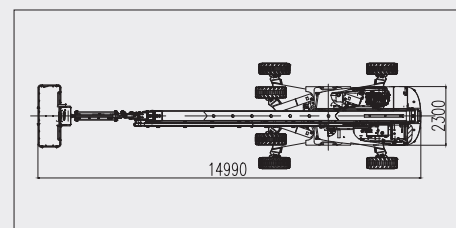
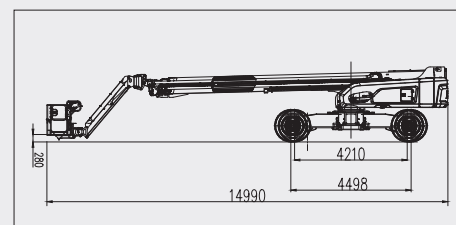
Control	12V DC proportional control	
Emergency power supply	12V/220Ah	
Engine model	Kubota V3307	
Engine-power/rpm	54.6kw/(2200r/min)	73.2ph/(2200r/min)
Max. engine torque	285Nm/(1500 r/min)	210.2ft-lb/(1500 r/min)
Engine emission standard	Tier 4	
Hydraulic tank capacity	290 L	65.8gal
Fuel tank capacity	180 L	40.8gal

### Tire

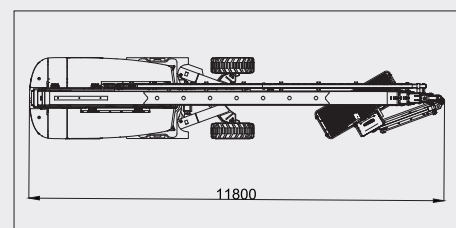
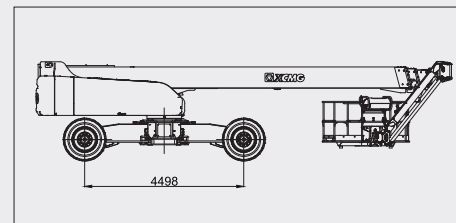
Tire size	1159mm×445mm	3ft11in×1ft5in
Tire ground pressure	11.05kg/cm <sup>2</sup>	157.17 psi
Driving wheels	4	
Braking wheels	4	
Steering wheels	4	



Stowed



Trans



The print does not belong to the contract, nor a part of the commercial contract. We reserve the right to revise the product model, parameters, configuration based on the continuous improvement requirements of the product, without prior notice. Pictures are for reference only, and the specific product shall depend on the real product. The final interpretation rights belong to XCMG.