



# XGS125J

MOBILE ELEVATING WORK PLATFORM

Comply with ANSI/CSA



# XGS125J

## MOBILE ELEVATING WORK PLATFORM

### FEATURES

#### MEASUREMENTS

2.4m × 0.9m (7'10" × 2' 11") working platform  
Tri-entry platform with side swing gate  
Load capacity of 300/460 kg (661/ 1014 lb)  
160° turntable rotation

#### Power

12V DC auxiliary power  
Cold start components  
Motor air pre-cleaner  
Motor state detection and start protection device

#### Drive

Four-wheel drive  
Axle balance system

#### Safety

Descent and motion alarm  
Tilt alarm  
Horn  
Platform and turntable emergency stop  
Emergency power unit  
Axle balancing detection system  
Four-Wheel control system

#### Other features

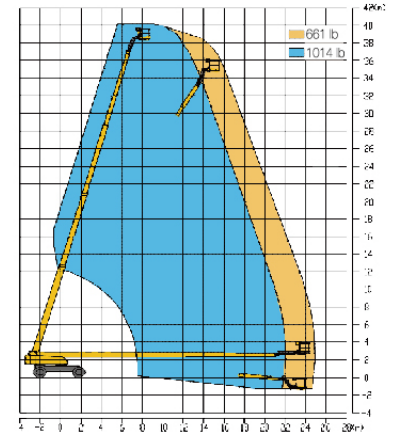
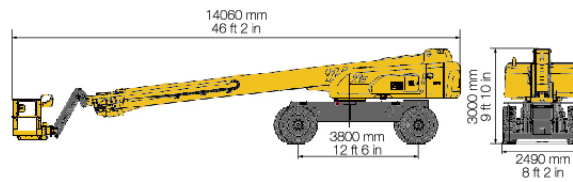
Self-leveling platform  
Proportional control  
Drive enable  
Hour meter  
Lockable control box covers  
Turntable rotation  
Full-time positive traction drive  
Full-drive motor  
Telematics prefabricated connector  
Active protection system  
Hydraulic cooler  
Anti-hostile environment protection knit  
Thumb rocker steering

### HIGHLIGHT

- Four-wheel drive, leading gradeability.
- Dual working curve, leading working height, working range and load capacity.
- Load capacity of 300/460 kg (661/1014 lb), meets the needs in different working conditions.
- Assisted with jib, the main boom can be telescoped to extra 1.45m horizontal reach and 135° working angle range.
- Electrical four wheel steering control technology can realize four steering modes, including independent steering of front and rear axles, all-wheel steering and crab steering flexible steering.
- The power system adopts electronically controlled engine, and the sensors of oil pressure, water temperature and speed are integrated with the engine and it is controlled by ECU, which is safe and reliable, and is equipped with fault diagnosis interface, which is convenient for fault diagnosis and maintenance.
- The electrical control system adopts distributed control technology based on PLC and CAN bus, which can realize many functions such as self-leveling, platform load weighing, dynamic monitoring, fault alarm, etc.

### OPTIONS

Tool Tray  
Lift guard half mesh panel  
Anti-squeeze hand auxiliary track  
Anti-extrusion  
Airplane protection  
Fall arrest kit  
AC power cord to platform  
Cold-resist fireproof and biodegradable hydraulic oil  
Working lights package



### MAIN PARAMETER

Item	Metric	Imperial
Overall dimensions		
Length(stowed/transportation)	14.06 m/12.5 m	46 ft 2 in/41 ft
Width(axle retracted/ extended)	2.49 m/3.8 m	8 ft 2 in/12 ft 5.5 in
Height	3 m	9 ft 10 in
Platform size	2.4 m×0.9 m×1.15 m	7ft 10 in × 2 ft 11 in × 3 ft 9 in
Wheelbase	3.8 m	12 ft 6 in
Minimum ground clearance	320 mm	13 in
Maximum working height	40.2 m	131 ft 11 in
Maximum platform height	38.2 m	125 ft 4 in
Maximum working range	24.9 m	81 ft 8 in
Lift capacity	300 kg(unrestricted)/460 kg(restricted)	661 lb(unrestricted)/1014 lb(restricted)
Boom luffing range	-6.5°~ 75°	-6.5°~ 75°
Jib luffing range	-60°~70°	-60°~70°
Turntable rotation	360°continuous rotation	360°continuous rotation
Platform rotation	160°	160°
Tailswing(axle retracted/extended)	2.36 m/1.70 m	7 ft 8.6 in/5 ft 6.8 in
Maximum drive speed	4.5 km/h	2.8 mph
Minimum turning radius (outside, axle retracted/extended)	6.8 m/5.8 m(4 wheel drive)	22 ft 4 in/19 ft(4 wheel drive)
Weight	21460 kg	47311 lb
Gradeability	40%	40%
Engine type	Deutz	Deutz
Engine rated power	55.4 kW/2600 rpm	74.3 hp/2600 rpm
Tires	445/50D710	445/50D710