

IITEM NO: PSE-72001

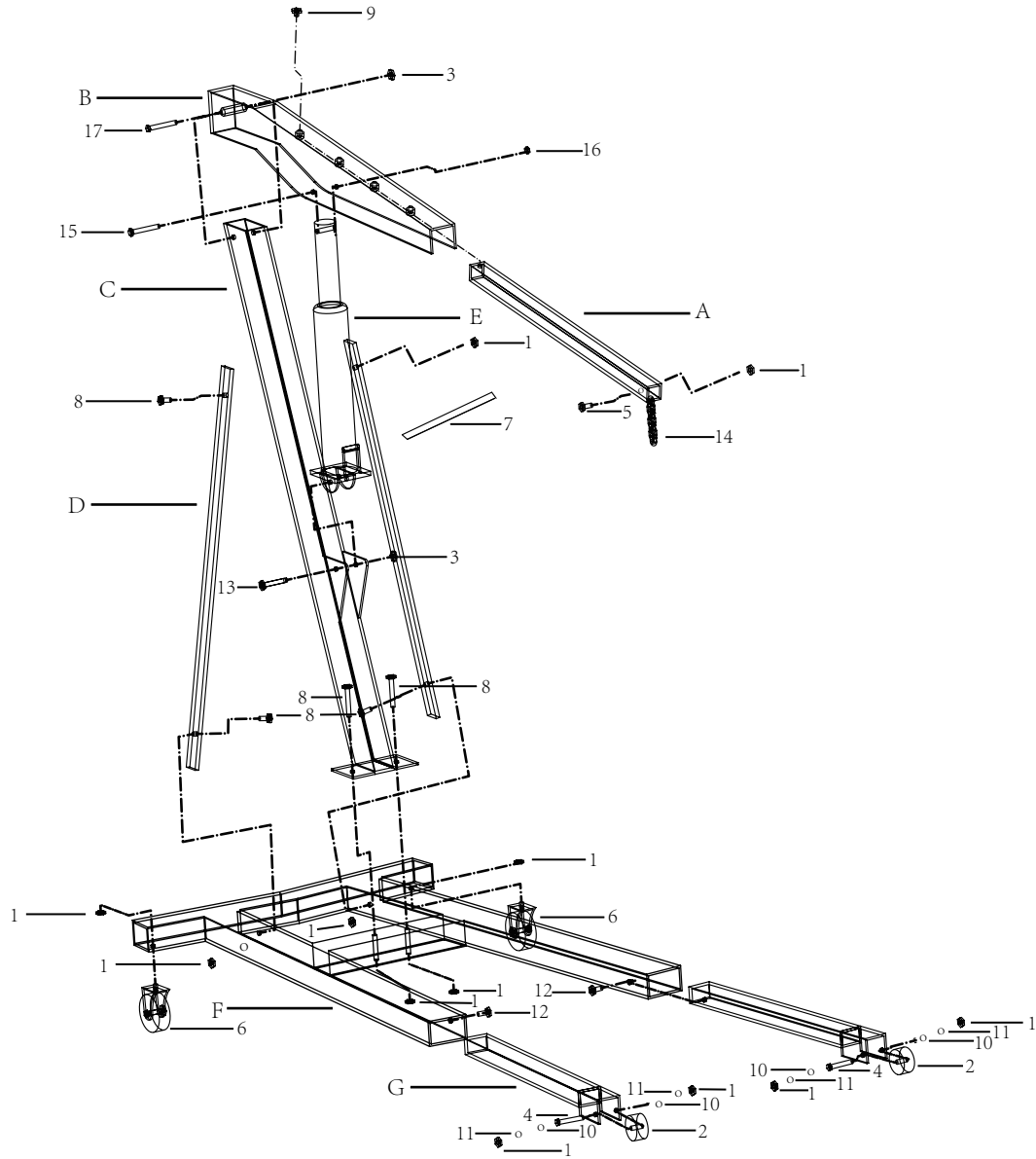
USER MANUAL



FOLLOW THE INSTRUCTIONS CAREFULLY TO GRANT THE MACHINE A CORRECT FUNCTION AND LONG SERVICE LIFE.

KEEP THE MANUAL NEAR THE MACHINE ALL TIME AND MAKE SURE ALL USERS HAVE READ THIS.

3 TON CAR AND SHOP CRANE



PART NO	DESCRIPTION	QTY	PART NO	DESCRIPTION	QTY	PART NO	DESCRIPTION	QTY
A	BOOM EXTENSION	1	2	WHEEL	2	10	SPRING WASHER	4
B	BOOM	1	3	NUT M20	2	11	WASHER 16	4
C	UPRIGHT MAST	1	4	BOLT M16X110	2	12	SET SOREW M12X20	2
D	MAST BRACE	2	5	BOLT M16X100	1	13	BOLT M20X110	1
E	HYDRAULIC RAM	1	6	CASTER WHEEL	2	14	HOOK AND CHAIN	1
F	BASE	1	7	JACK HANDLE	1	15	BOLT M22X120	1
G	BASE EXTENSIONS	2	8	BOLT M16X110	5	16	NUT M22	1
1	NUT M16	12	9	LOCK PIN	1	17	BOLT M20X130	1

WARNING

- 1, WHEN ASSEMBLE SHOP CRANE ALL FASTENING PIECES MUST BE SCREWED.
- 2, DO NOT LOAD THIS SHOP CRANE BEYOND ITS RATED CAPACITY SPECIFIED FOR EACH BOOM POSITION.
- 3, BEFORE USING THIS SHOP CRANE MOVE THE LOAD TO THE LOWEST POINT POSSIBLE.
- 4, DO NOT ALLOW THE LOAD TO SWING. VIOLENTLY OR DROP SUDDENLY DURING LOWERING OR MOVING
- 5, THIS SHOP CRANE IS DESIGNED FOR USE ONLY ON HARD LEVEL SURFACES CAPABLE OF SUSTAINGING THE LOAD.
- 6, DO NOT EXTEND THE SHORT AND LONG EXTENSION BEYOND THIS LIFTING POSITION MARKED BY RED LINE.
- 7, WHEN THIS SHOP CRANE IS OPERATED. THE SHOPT CRANE LONG EXTENSION LEG MUST BE LEFT IN THE MAXIMUM EXTENDED POSITION AND LOCKED FOR ADDITIONAL SAFETY.