

Thank
& You

**THANK YOU FOR PURCHASING
WATERFLOW BY HESAGO**

NEED ASSISTANCE?

**CONTACT THE TECHNICAL SUPPORT IN ENGLISH
ON THE WEBSITE WWW.WATERFLOW.STORE
OR VIA WHATSAPP 0039-02-87169002**



**DO YOU LIKE WATERFLOW?
SEND US A WHATSAPP MESSAGE 0039-02-87169002**

WaterFlow is a portable filter for natural water, multifunctional and equipped with accessories, with a 0.1 micron ultrafiltration medical-grade membrane.

It is 99.9% effective against Escherichia Coli, Staphylococcus Aureus, Salmonella, Cholera, Legionella and other pathogenic bacteria.

Thanks to its ultra-portability, WaterFlow allows you to drink clean and safe water in any place.

- IT REMOVES 99.9% OF WATER BACTERIA
- IT FILTERS 2,000 LITERS OF WATER WITH 0.1 MICRON PRECISION
- ITS LIFE CAN BE EXTENDED BY CARRYING OUT CLEANING CYCLES
- IT FITS INTO THE PALM OF YOUR HAND
- IT RESISTS IMPACTS
- VERSATILE USE: 3 WAYS OF USE

CONTENT OF THE PACKAGE

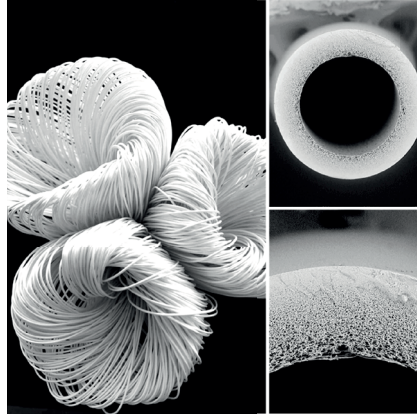
Inside the package you will find the filter and its accessories:

- ✓ **MEMBRANE FILTER**
- ✓ **FLEXIBLE HOSE**
- ✓ **PIPE CLIP**
- ✓ **CONNECTOR FOR BUCKETS OR BAGS**

CHARACTERISTICS

Waterflow uses a 0.1 micron ultrafiltration membrane made with medical grade material effective against bacteria present in the water at 99.99999%.

Approved by Italian inspection services TUV and SGS.



DETAIL OF THE
FILTERING MEMBRANE

TEST E. COLI

Test Item	Test Method (Reference to)	Test Result		Removal rate (%)
		Escherichia Coli spiked standard samples (A) (CFU/100mL)	Escherichia Coli spiked standard samples After filtration (B) (CFU/100mL)	
<i>Escherichia Coli</i> ATCC 25922	Client's method	2.3×10^6	< 1	> 99.9

TEST COLIFORMI

No	Test Item	Test Method(s)	Result(s)		
			Before the filter	After the filter	Antibacterial rate
1	Coliforms	GB 4789.3-2010	1.7×10^8 CFU/mL	<1 CFU/ mL	99.999999 %
2	Coliforms	GB 4789.3-2010	1.6×10^8 CFU/ mL	<1 CFU/ mL	99.999999 %

FILTERING PORES: 0.1 MICRON

MATERIALS: ABS, MEDICAL-GRADE ULTRAFILTRATION, SILICONE

IDEAL TEMPERATURE: FROM 0° C TO 60° C

CAPACITY: 2000 LITERS

WATER FLOW: 600 MILLILITERS PER MINUTE

OPERATIONAL DURATION: 5 YEARS (3 YEARS AFTER HAVING WET IT)

HOW TO USE THE FILTER

The portable Waterflow filter can be used in different ways. You can drink directly from the spring (with or without the aid hose), use a PET plastic bottle with compatible attachment, or filter the water by gravity using a bucket or a bag



1 DIRECTLY FROM THE SOURCE

USE THE FILTER AS A STRAW TO DRINK FROM THE SPRING, ALSO USING THE HOSE AS AN EXTENSION.



2 WITH A PLASTIC BOTTLE

FASTEN THE WATERFLOW FILTER TO A PLASTIC BOTTLE WITH A 28 MM SPOUT TO OBTAIN A FILTERING BOTTLE.



3 GRAVITY FILTERING SYSTEM

CONNECT THE FILTER TO THE FLEXIBLE HOSE AND THE PIPE CLIP. MOUNT THE CONNECTOR ON A BUCKET OR PLASTIC BAG.

RECOMMENDATIONS FOR USE

- 1 Do not use WaterFlow with sea water, chemically contaminated water or water from industrial or agricultural processes.
- 2 The water must flow in the direction of the arrow
- 3 If you use the flexible hose, make sure that there are no air bubbles between the container and the filter



WARNING

Use the filter to drink from natural and non-polluted water. Do not use with human or industrial waste water. On first use, discard the first 200 ml of water. Usage temperature: 0-60° C.



Drinking directly from the spring

Use the filter as a straw to drink directly from the spring

Use the filter to drink from natural and non-polluted water. Do not use with human or industrial waste water. On first use, discard the first 200 ml of water.

- Pay attention to the water flow direction, which must correspond to the arrow printed on the filter.



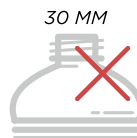
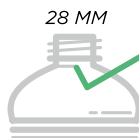
- Connect the hose if the water spring is uncomfortable to reach.



Connected to a bottle

Fasten the WaterFlow filter to a plastic bottle with a 28 mm spout to obtain a filtering bottle.

The filter can be fastened to different types of plastic bottles with a 28 mm spout (no low cap).

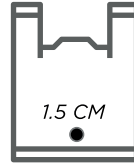




Gravity filtering

easily transform any plastic bucket or bag into a gravity filtering system

Make a 1.5 cm hole in the lower part of a bucket (or a plastic bag) and screw the connector by positioning the two gaskets between the inside and outside of the bucket.



Insert the flexible hose into the hose clip. You can use the clip as a tap to start or stop the water flow. Connect the hose to the bucket connector.

Let the water run a little to eliminate air bubbles, then connect the flexible hose to the filter.



CARE AND MAINTENANCE

It is important to keep the filter clean, especially the outlet spout, to reduce the risk of bacterial contamination. If the flow decreases, carry out a backwash. Before storing the filter for later use, it is advisable to carry out a backwash.

For better cleaning it is possible to soak the filter in a vinegar or mouthwash solution for a few minutes, then carry out a backwash with clean water.



BACKWASH

Place a plastic bottle full of clean water on the silicone support placed on the exit side. Squeeze the bottle of water so that the water flows in the opposite direction. This operation allows to remove the dirt collected in the filter. Backwash periodically (**reverse direction to the arrow**).



WARNING

Use the filter to drink from natural and non-polluted water. Do not use with human or industrial waste water. On first use, discard the first 200 ml of water. Usage temperature: 0-60° C.

If you need assistance, it is available the support service on the website www.waterflow.store or via Whatsapp **0039-02-87169002** in English.

AT⊕MIUM

Waterflow is a product of

Atomium srls - Via Bebio 74 - 76125 Trani - ITALY