

TRADITION MEETS  
CUTTING EDGE TECHNOLOGY.

CUTTING EDGE  
BULLETS







DANIEL SMITCHKO  
PRESIDENT



SHAWN MCKENNA  
DIRECTOR OF SALES

WE ARE MACHINISTS.  
WE ARE HUNTERS.  
WE ARE SHOOTERS.

WE ARE CUTTING EDGE BULLETS.



SAMANTHA SMITCHKO  
VP OF BUSINESS DEVELOPMENT



ROBERT SAVARD  
VP OF OPERATIONS





**DURVIN WICK**  
R&D SPECIALIST/HEAD MACHINIST



**NICOLE CROASMUN**  
DIRECTOR OF CUSTOMER SERVICE/EXPORTING



**NATHAN SMITCHKO**  
VP OF INFORMATION TECHNOLOGY



**JENNY WICK**  
PRODUCTION SUPPORT



## ABOUT US

In 2009, our founder and president Dan Smitchko decided to combine his passion for machining and long range hunting. The mission was to develop a bullet that performs as well at the range as it does in the field. Since then, we have developed over 16 product lines and 370 different bullets holding true to this goal.

## QUICK FACTS

- FOUNDED IN 2009
- MACHINED, LATHE TURNED PROJECTILES
- USED BY HUNTERS OF SMALL AND LARGE GAME WORLDWIDE
- SOLID COPPER, LEAD FREE CONSTRUCTION
- OVER 370 DIFFERENT BULLETS TO DATE
- BULLETS FOR EVERY APPLICATION CALIBERS .224-700NE
- USED BY MORE EXTREME LONG RANGE CHAMPIONS THAN ANY OTHER BULLET ON THE MARKET
- 3 EXCLUSIVE PATENTS INCLUDING THE SEALTITE™ BAND



# EXCLUSIVE PATENTS

## PATENTED SEALTITE™ BAND

PATENT NO. US 8,573,129 B1

OUR PATENTED SEALTITE™ BAND PREVENTS FLIERS BY FORMING A COMPLETE SEAL AS THE BULLET ENTERS AND EXITS THE BARREL. HAVING A COMPLETE SEAL ALSO REDUCES COPPER FOULING, ALLOWING MORE SHOTS BETWEEN CLEANING. THIS BAND ENCIRCLING THE BODY OF OUR BULLETS IS SLIGHTLY LARGER THAN CALIBER DIAMETER AND CAN BE FOUND ON ALL OF OUR COPPER BULLETS.

SEALTITE™ BAND

## PATENTED DOUBLE DRIVING BAND

PATENT NO. US 11,181,352

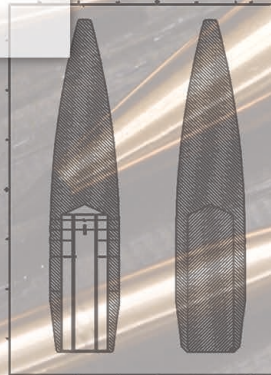
OUR PATENTED DOUBLE DRIVING BAND IS THE KEY TO MAKING OUR MONOLITHIC 22LR BULLETS ACCURATE. THIS FEATURE REDUCES BEARING SURFACE TO HELP REDUCE PRESSURE. THIS FEATURE ALSO INCORPORATES OUR PATENTED SEALTITE® BAND WHICH PREVENTS FLIERS BY FORMING A COMPLETE SEAL AS THE BULLET ENTERS AND EXITS THE BARREL. HAVING A COMPLETE SEAL SUBSTANTIALLY REDUCES COPPER FOULING, ALLOWING MORE SHOTS BETWEEN CLEANING.



## PATENTED AP DESIGN

PATENT NO. US 10,048,051 B1

OUR PATENTED AP DESIGN COMBINES A TUNGSTEN CORE FOR MAXIMUM PENETRATION, AND OUR MTACT™ DESIGN FEATURING OUR PATENTED SEALTITE™ BAND. THE COMBINATION OF THESE TECHNOLOGIES NOT ONLY PROVIDES ARMOR PIERCING PENETRATION, BUT ALSO PROVIDES A BULLET THAT FLIES MORE ACCURATELY THAN ANYTHING ON THE MARKET TODAY. OUR AP TECHNOLOGY CAN BE IMPLEMENTED INTO ANY CALIBERS .224-50BMG.





## LEAD CONTAMINATION IN MEAT

You wouldn't use lead paint on your walls.  
So why would you want it in your families' dinner?

This is not a political debate. The threat of ingesting lead is very real.

Common Misconceptions:

MYTH: I clean my meat well and get all of the lead fragments out before butchering.

TRUTH: As you can see by the xray on the right, it is next to impossible to get every piece of lead out of an animal.

MYTH: The type of lead used in bullets isn't the same as the lead that harms you.

TRUTH: Lead is lead. Lead has serious health consequences no matter the "type".

MYTH: Lead comes from the ground, it's natural,

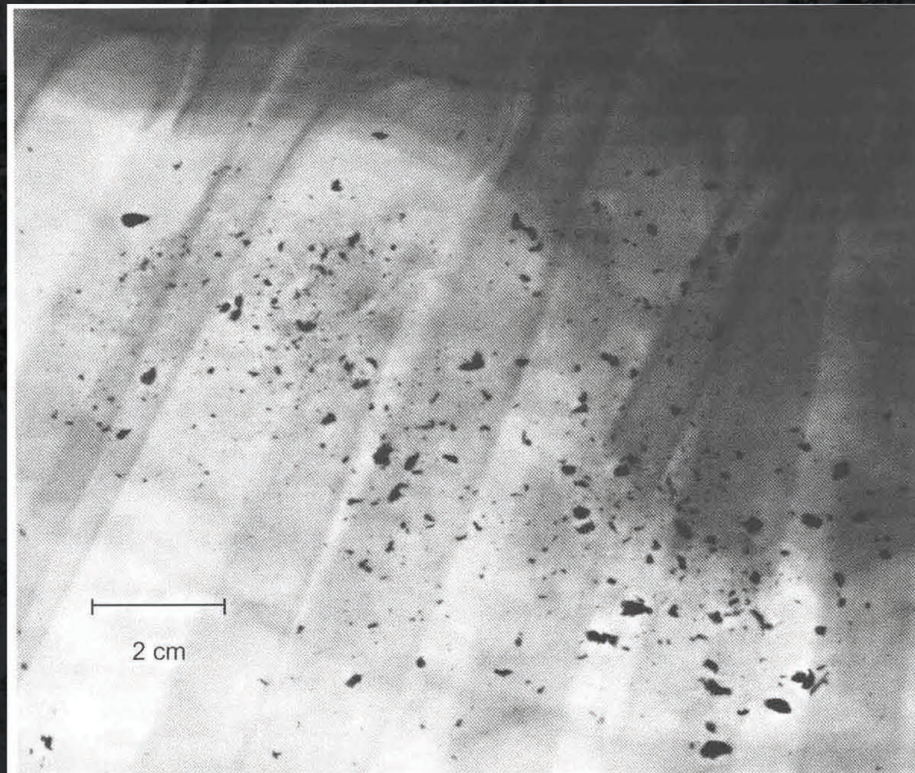
TRUTH: Lead was perfectly safe for us... when it was buried deep under ground. It wasn't until the romans dug it up in 200BC and started using it in their plumbing that it was a problem.

MYTH: I've been eating meat shot with lead core bullets for decades and im fine.

TRUTH: The effects of lead can be slow and can fly under the radar for many years.



Xray image of white tail deer shot with conventional lead core bullet. It's next to impossible to get all trace amounts of lead out of the meat prior to consumption.



#### LEAD FACT

When neurons are activated, calcium enters and activates neurotransmitters. Neurotransmitters are essential to healthy brain function. When lead gets into your body, it mimics Calcium, and substantially reduces the amount of calcium that can enter the neuron. The lack of neurotransmitter activity is the reason people with lead poisoning start to have strange behavioral patterns and reduced cognitive function.



PRECISION SHOOTING

**WE ARE THE #1 CHAMPION BULLET  
IN EXTREME LONG RANGE SHOOTING.**

- KING OF 2 MILES CHAMPION BULLET 6 YEARS RUNNING
- USED BY MORE EXTREME LONG RANGE CHAMPIONS  
THAN ANY OTHER MANUFACTURER COMBINED
- .5 SD BC ES
- COLD BORE WORLD RECORD @ 2,878YDS
- LONGEST IMPACT MADE IN COMPETITION @ 4,227YDS



## LAZER

Our LAZER lineup is one of the most popular among ELR match shooters. This bullet features our patented SealTite™ band and a polymer tip. Originally designed as a long range hunting bullet, it was eventually found to be the most predictable bullet ever made. Years after its development, it was discovered to have not the highest ballistic coefficient, but the most consistent ballistic coefficient of any other bullet. In fact, our bullets produce single digit ballistic coefficient ES (extreme spread) numbers that are the most consistent on the market bar none.

**Available Calibers: .264-510**

**Effective Range: 0-1,000yds+**



## MTAC(Match/Tactical)

Our MTAC (Match/Tactical) line is a non-expanding, high bc bullet strictly for target use. Just like the rest of our copper bullets, they are a monolithic, lathe-turned solid. We designed each bullet in this line with a matching MTH (Match/Tactical/Hunting) hollowpoint so you can use the same bullet and same load, and have the same point of impact.

**Available Calibers: .224-510**

**Effective Range: 0-1,000yds+**





# HUNTING BULLETS



## DROPPING GAME IN ITS TRACKS SINCE 2009.

Whether you're shooting hogs out of a helicopter in Texas, long range hunting in the mountains of Idaho, or hunting buffalo on the plains of Africa, our hunting bullets were designed with one goal in mind: to drop game quickly, efficiently, and ethically. Rather than mushroom, all of our hollowpoints are designed to shed petals after 1-2" of penetration while the base continues through. This creates multiple wound channels, thus creating a massive amount of terminal performance.



*Pictured: 16" gel block shot with our .308 165gr MAXIMUS™ bullet. This block demonstrates how our fracturing technology functions on our hollowpoints.*





## MTH™

Our MTH (Match/Tactical/Hunting) line is a high bc, expanding monolithic bullet. This bullet will shed 5-6 small petals after 1-2" of penetration. These petals will follow the wound channel created by the base of the bullet, creating one big wound channel.

**Minimum Impact Velocity for Expansion: 1600fps**

**Effective Range: 0-1,000yds+**

**Available Calibers: .224-.510**

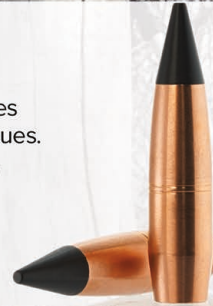
## RAPTOR™

our RAPTOR™ series is designed for maximum terminal performance in hunting applications. These bullets are designed to shed 4-6 blades (depending on caliber) after 1-2" of penetration while the base continues. This line includes bullets for specialty cartridges such as 458 socom, 300 Blackout, 450 Bushmaster and subsonic use.

**Minimum Velocity for Expansion: 1500fps**

**Effective Range: 0-600yds**

**Available Calibers: .224-.458**



## MAXIMUS™

This is a high bc, expanding monolithic bullet. Designed to shed 5-6 small petals after 1-2" of penetration, these petals will follow the wound channel created by the base of the bullet, creating one big wound channel.

**Minimum Impact Velocity Required for Expansion: 1400fps**

**Effective Range: 0-1200yds**

**Available Calibers: .224-.458**



# HUNTING BULLETS



## LAZER

Although the Lazer lineup is one of the most popular among ELR match shooters, this bullet was originally designed for hunting. Featuring our Patented SealTite™ Band and a polymer tip, the Lazer is designed to shed 3 petals after 1-2" of penetration. These petals follow along side the base of the bullet which continues to penetrate after the petals shear off.

**Minimum Impact Velocity for Expansion: 1400fps**

**Effective Range: 0-1,000yds+**

**Available Calibers: .264-.510**

## DGBR (Dangerous Game)

Our Dangerous Game Brass series consists of solids (DGBR) for deep, straight line penetration, and hollowpoints (DGBR-HP) for devastating terminal performance. Each solid is designed with a matching hollowpoint to use as a followup shot. Use the same load with each bullet in the pair and have the same point of impact.

**Minimum Impact Velocity for Expansion: 1500fps**

**Effective Range: 0-500yds**

**Available Calibers: 6.5mm-700ne**





# MUZZLELOADER BULLETS



## MZL MAXIMUS™

The MZL Maximus™ high bc muzzleloader bullet was designed for use in in-line muzzleloaders. these bullets were designed for that after 1-2" of penetration, 4 blades break off and radiate outward away from the main wound channel while the base continues through for even deeper penetration creating a massive amount of trauma.

**Minimum Impact Velocity Required for Expansion: 1400fps**

**Available Calibers: 40 cal (for use in 45cal mzl)**

**44cal and 45cal (for use in 50cal mzl)**

**Effective Range: 0-800yds**

## MZL RAPTOR™

the MZL Raptor™ delivers devastating trauma and extreme accuracy for muzzleloading rifles.

After 1-2" of penetration the four blades shear off and radiate outward in a star pattern.

Meanwhile the non-deforming, blunt trauma base™ continues on for deeper penetration.

**Minimum Impact Velocity Required for Expansion: 1300fps**

**Available Calibers: 40 cal (for use in 45cal mzl)**

**44cal and 45cal (for use in 50cal mzl)**

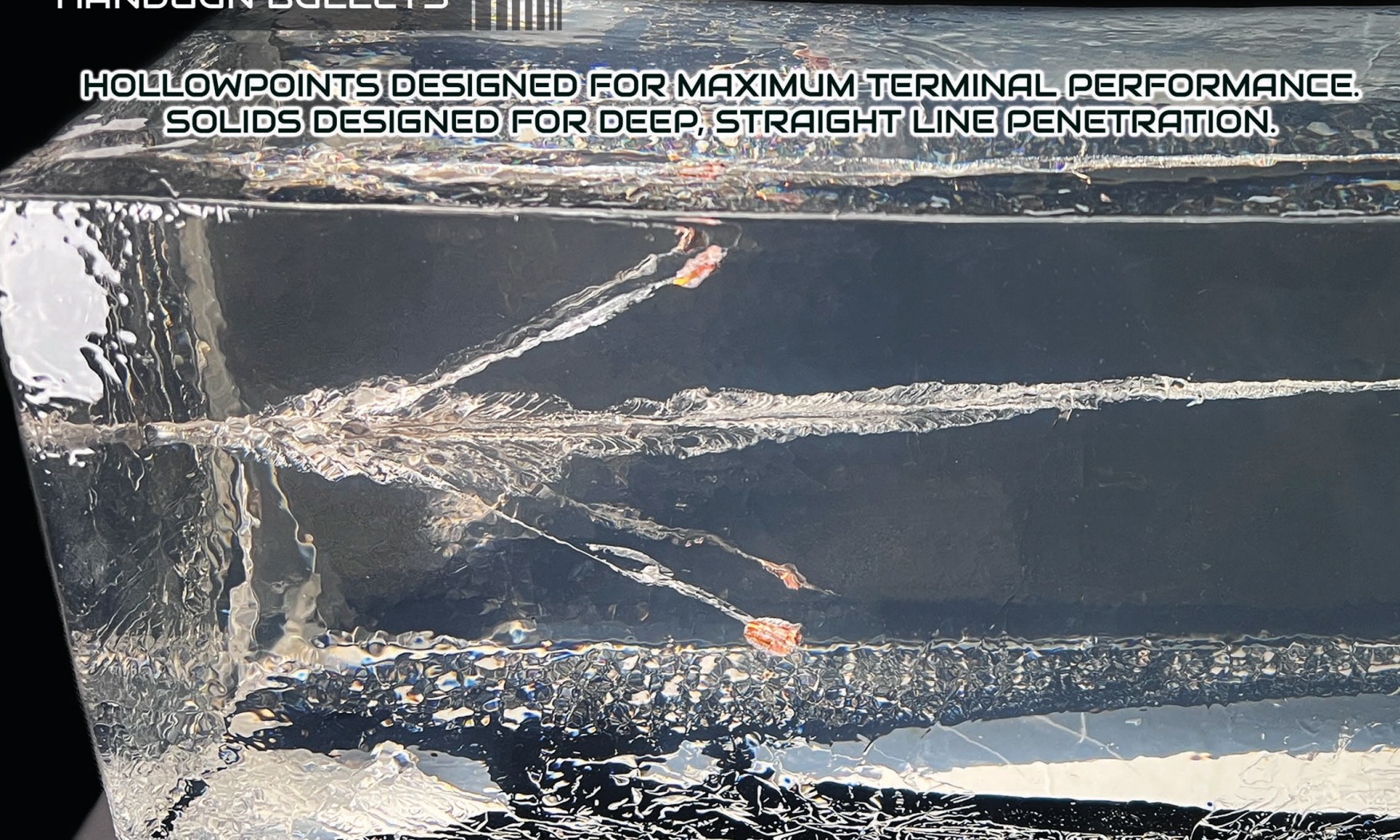
**Effective Range: 0-500yds**





HANDGUN BULLETS

HOLLOWPOINTS DESIGNED FOR MAXIMUM TERMINAL PERFORMANCE.  
SOLIDS DESIGNED FOR DEEP, STRAIGHT LINE PENETRATION.







## **HG RAPTOR** Handgun Hollow Points

This monolithic, copper bullet is designed for extreme penetration and maximum terminal performance. After 1-2" of penetration, 4 blades break off and radiate outward in a star pattern while the base continues. These blades carry a substantial amount of energy.

**Available Calibers: .224-.510**

**Minimum Velocity Required for Expansion: 1000fps**



## **HG SOLID** Handgun Solid

Our HG Solid line is a monolithic copper bullet designed with a nose profile that offers deep, powerful, straight line penetration.

**Available Calibers: .357-.510**

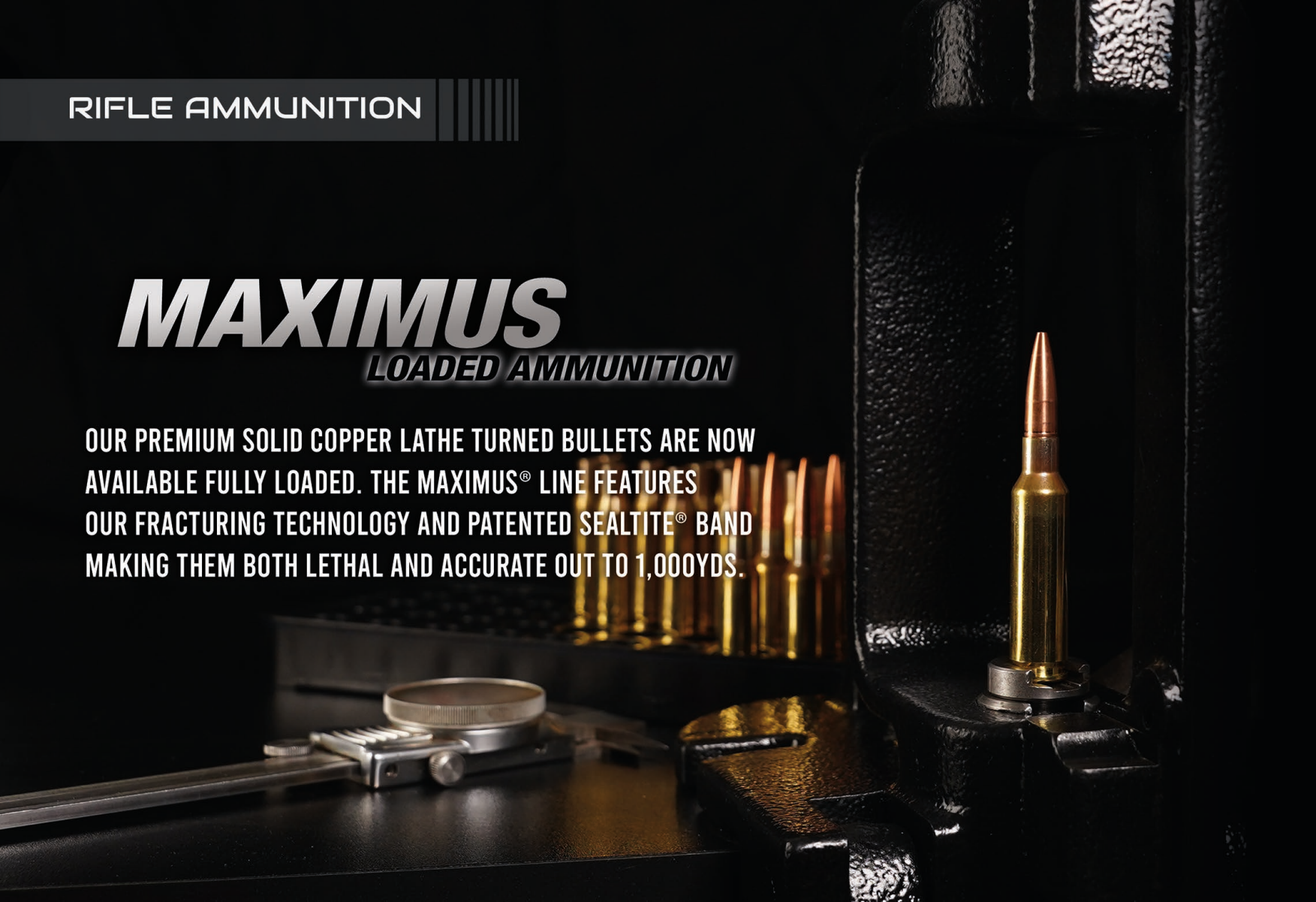


RIFLE AMMUNITION

# **MAXIMUS**

**LOADED AMMUNITION**

OUR PREMIUM SOLID COPPER LATHE TURNED BULLETS ARE NOW AVAILABLE FULLY LOADED. THE MAXIMUS® LINE FEATURES OUR FRACTURING TECHNOLOGY AND PATENTED SEALTITE® BAND MAKING THEM BOTH LETHAL AND ACCURATE OUT TO 1,000YDS.





## AVAILABLE CALIBERS

**6.5 CREEDMOOR** - 125GR BC: .439

**6.5 GRENDL** - 105GR BC: .304

**30-30 WIN** - 110GR BC TBD

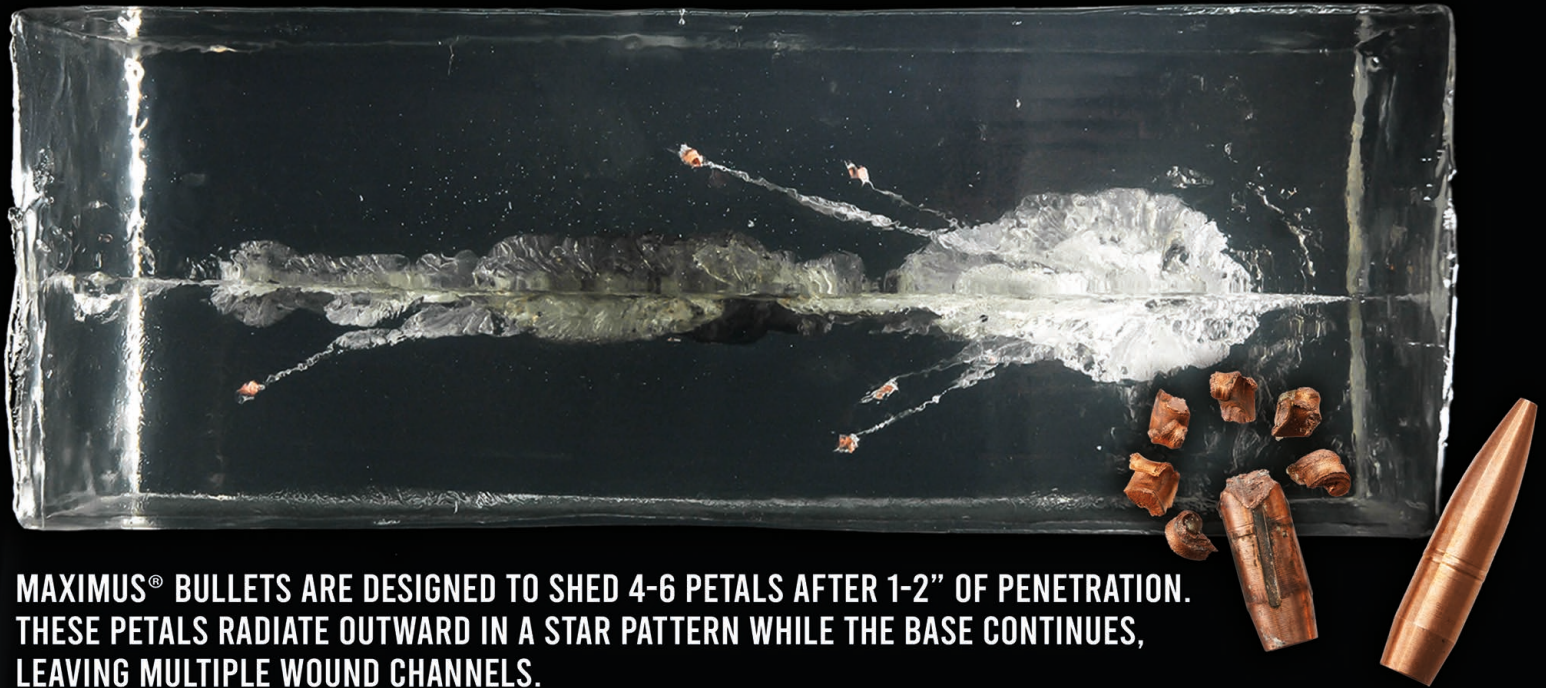
**30-06 SPRG** - 180GR BC: .480

**.243 WIN** - 77GR BC: .370

**.270 WIN** - 125GR BC: .396

**7MM REM** - 152GR BC: .373

**.308 WIN** - 150GR BC: .395



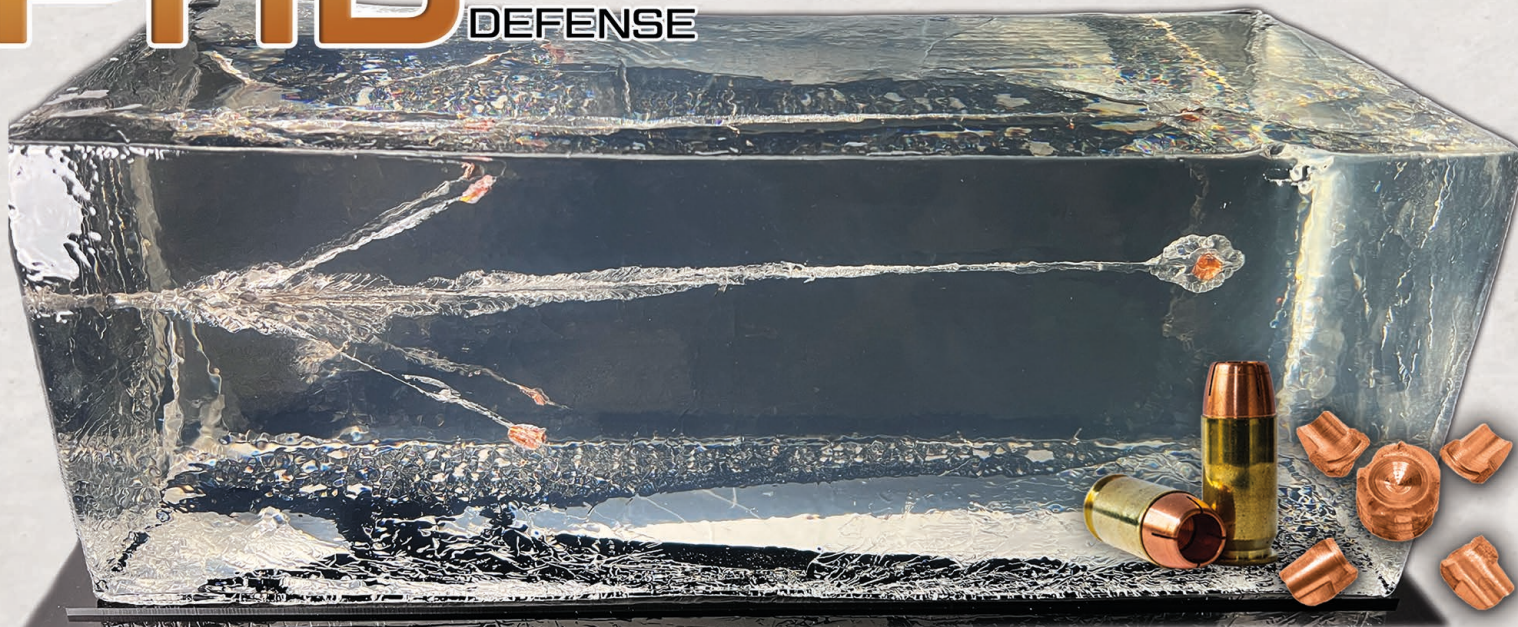
**MAXIMUS® BULLETS ARE DESIGNED TO SHED 4-6 PETALS AFTER 1-2" OF PENETRATION. THESE PETALS RADIATE OUTWARD IN A STAR PATTERN WHILE THE BASE CONTINUES, LEAVING MULTIPLE WOUND CHANNELS.**



HANDGUN AMMUNITION



# PHD<sup>TM</sup> PERSONAL HOME DEFENSE



Our PHD<sup>TM</sup> Personal Home Defense Ammunition is designed to shed 4 petals after 1-2" of penetration. These large petals carry a substantial amount of energy vs. smaller petals that are commonly found in fragmenting ammunition. To see high speed gel block testing of these bullets, visit our YouTube channel at <https://youtube.com/@cebullets>





## PHD™ AMMO Personal Home Defense

Loaded with our HGHP hollowpoint handgun bullets, this monolithic copper bullet is designed for extreme penetration and maximum terminal performance. After 1-2" of penetration, 4 blades will break off and radiate outward in a star pattern while the base continues.

**Available Calibers: 357mag, 380acp, 9mm, 40s&w, 45acp**



## PD SOLIDS Personal Defense Solids

Our PD solid ammo is loaded with our HG Solids™ making them perfect for providing deep, straight line penetration. This ammunition was specifically designed for hunting, target shooting, or defense situations.

**Available Calibers: 357mag & 10mm**





## SOLID COPPER 22LR BULLETS

introducing the CuRx™ 22lr bullets. these lathe-turned, solid copper bullets are sold as bundles that include 200 bullets and 200 pieces of primed, spun brass. featuring our patented SealTite™ band and patented Double Driving Band™ design, the CuRx™ are bound to be your new match grade, 22lr pills.




Available Weights:

32gr - Required twist: (1:16" or faster)

42gr - Required twist: (1:10" or faster)

50gr - Required twist: (1:7" or faster)



A collection of reloading equipment is shown on a light-colored workbench. In the foreground, a tall, black die assembly stands vertically, featuring a brass die body with a hexagonal base and a threaded top section. To its left lies a small, silver-colored shell holder. In front of the die assembly is another die component, a brass die with a black hexagonal base, marked with "22lr Crimp" in gold lettering. To the right, a green die is partially visible, with a silver-colored shell holder resting on its base. In the background, two yellow plastic bottles with white labels are visible, one of which has "22LR SEATING DIE" printed on it. A white text box is overlaid on the right side of the image.

Not set up to load 22lr? We offer 22lr die sets which include a crimping die, seating die, and 2 shell holders. Use the seating die by hand, or in your press.



## SUPPORT AND RESOURCES

Tech Support/General Customer Support  
Nikki Croasmun  
Nikki@cuttingedgebullets.com  
(208) 845-0517


Retail Sales  
sales@cuttingedgebullets.com  
(877) 232-8553

Dealer/Distributor Sales  
Shawn McKenna  
shawn@cuttingedgebullets.com  
(208) 912-4429

Sponsorship Inquiries  
support@cuttingedgebullets.com

FOR TECHNICAL DATA SHEETS,  
TWIST RATE REFERENCE GUIDES AND  
OTHER HELPFUL INFO, VISIT:  
<https://cuttingedgebullets.com/reloading-resources>





MADE IN IDAHO  
6766 W Melrose St  
Boise ID, 83709